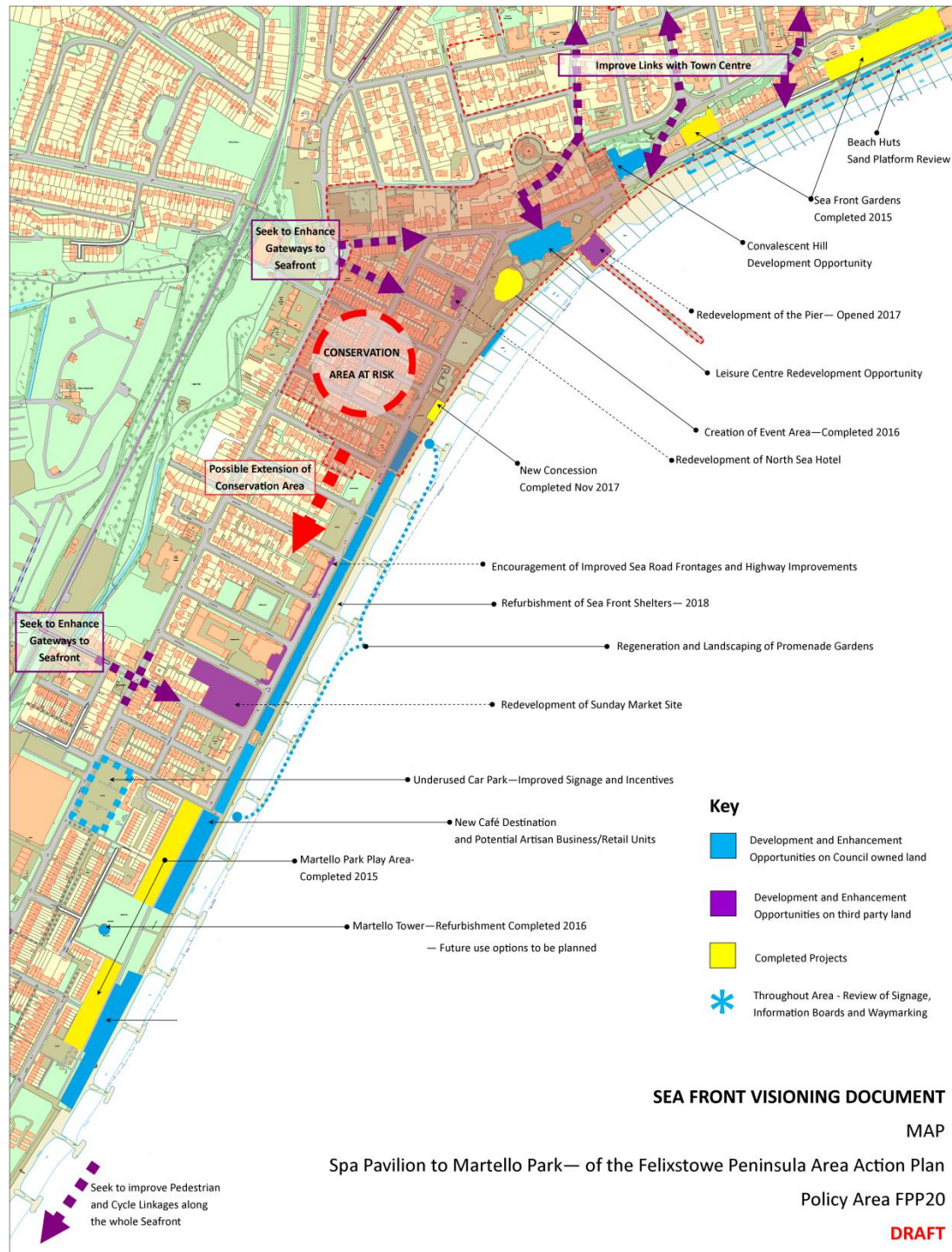


# Felixstowe South Sea Front

Ben Woolnough – Major Projects Advisor







# Positive Features



ARCHITECTURE AND ACTIVITY



CHARACTER AND USE



INTERESTING AND QUIRKY STRUCTURES



ACCESSIBLE PROMENADE



LANDMARKS



LANDSCAPE CHARACTER



RICH HISTORIC FABRIC

## Negative Visual and Movement Features



FLOOD BARRIER



PARKING STRATEGY



EXISTING WALLS AND HEDGE FORMING PHYSICAL AND VISUAL BARRIER



LEVEL CHANGE



## Design Response



SERIES OF ROOMS

+



PLACE MAKING AND LANDMARKS

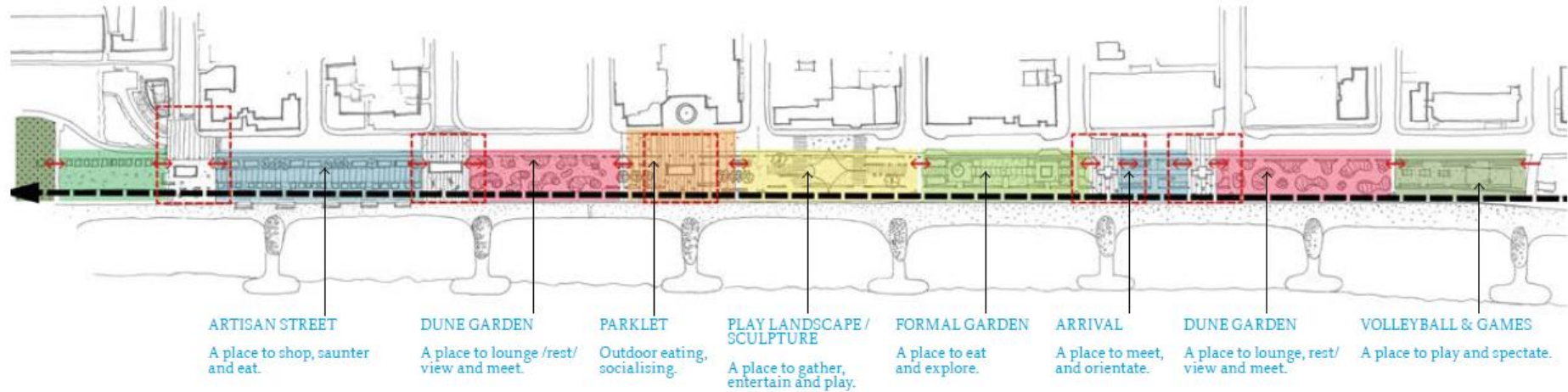
+



LINEAR PARK RESPONDING TO CONTEXT

## Series of rooms

Central to the concept is the creation of a series of rooms, each with a different use and character that relates to the businesses and uses along Sea Road. Each space should have a different character and function and should be exciting places to encounter, drawing pedestrians along the promenade and providing opportunity for gathering, seating, socialising and events.



ROOM CHARACTER





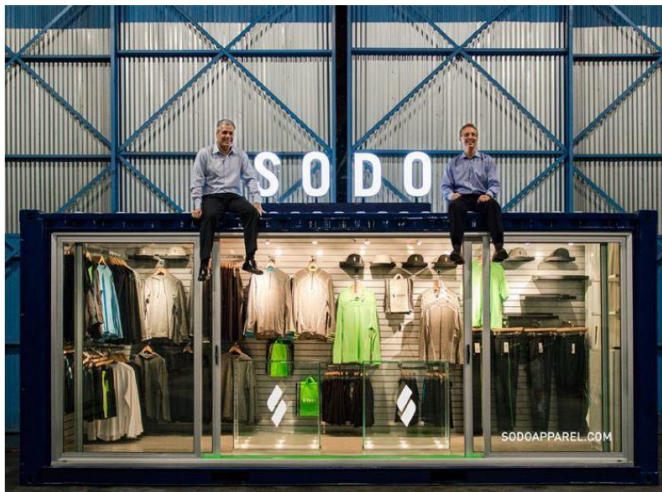
## Play Garden Sketch Visual





## Converted Container Park

- Artisan Market
- Business Units
- Pop up Shops
- Cycle Hire
- Visitor Hub



## New Café/Restaurant Destination

### Martello Park

A commitment in  
the original plans  
for the housing and  
play area development







## Concept Sketches

