

Kessingland Parish Council

Emergency Planning Strategy

Started in 2007 getting a team together

Vision Statement

To Provide a sustainable emergency strategy that will be :-

- *easy to understand*
- *Easy to implement*
- *Use local business knowledge and skills*
- *To supplement the local emergency services*
- *Is adoptable by the community*

Aims and Objectives

- *To provide Kessingland with an effective Emergency Planning Strategy*
- *To get the community working together in the case of an “Emergency”*

What is Emergency Planning

An emergency is defined as :-

“anything which endangers or threatens the well-being of people and the environment, or requires the implementation of special arrangements by one or more of the emergency services, NHS or local authority”.

What Constitutes a Problem

- Widespread emergencies are generally related to severe weather and/or failure in essential public services and utilities. Other causes may include serious chemical, biological or radiological incidents.
- Emergency response resources are often unable to meet initial demand for assistance and will be prioritised in favour of what may appear the most urgent
- Communities may be physically or practically isolated from outside help in the short term
- Climate changes has already manifested itself in more incidents of extreme weather conditions and this trend is forecast to continue

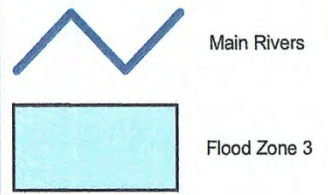
History

How did we get here

- *Years ago every village had an emergency officer who planned for anything they considered may threaten the community*
- *Then the perceived threat of the “cold war” and the Civil Defence mechanism was disbanded but nothing replaced it*
- *Along came more severe autumn and winter storms .*
- *Climate changes*
- *September 11th the “Twin Towers” all this reminds us how vulnerable we are to personal loss, power loss and disruption to services.*
- *Kessingland being a coastal village the main problem has been flooding and still remain a considerable problem especially with the coastal erosion*



Flood Zone 3

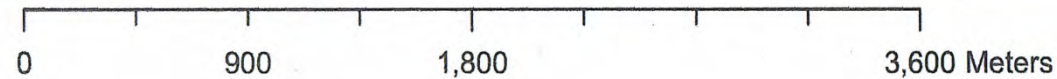


This map is reproduced from Ordnance Survey material with the permission of Ordnance Survey on behalf of the Controller of Her Majesty's Stationery Office © Crown copyright. Unauthorised reproduction infringes Crown copyright and may lead to prosecution or civil proceedings. Environment Agency, 100026380, 2005

Kessingland Enquiry

1:27,382

03/03/2006



Continued

- ***Its widely accepted the approach to Major Incidents or Emergencies has to be reviewed looking at a wider approach not just local threats***
- ***Formally “Suffolk Community Action and Resilience Forum” now an umbrella group called Community Action Suffolk was set up to encourage councils to deal with emergencies or loss of services in their own locality***
- ***Kessingland Parish Council decided to go for a fully integrated Emergency Strategy***

What are the options

- *Do Nothing and rely on the emergency services*
- *Deal with the situation as and when it occurs*
- *Only concentrate on the main issue (Flooding) and hope nothing else happens and have a plan just for that type of incident*
- *Follow guidance given by the former (SCARF) team with a full Emergency Planning Strategy with the community taking ownership*

Recommendation

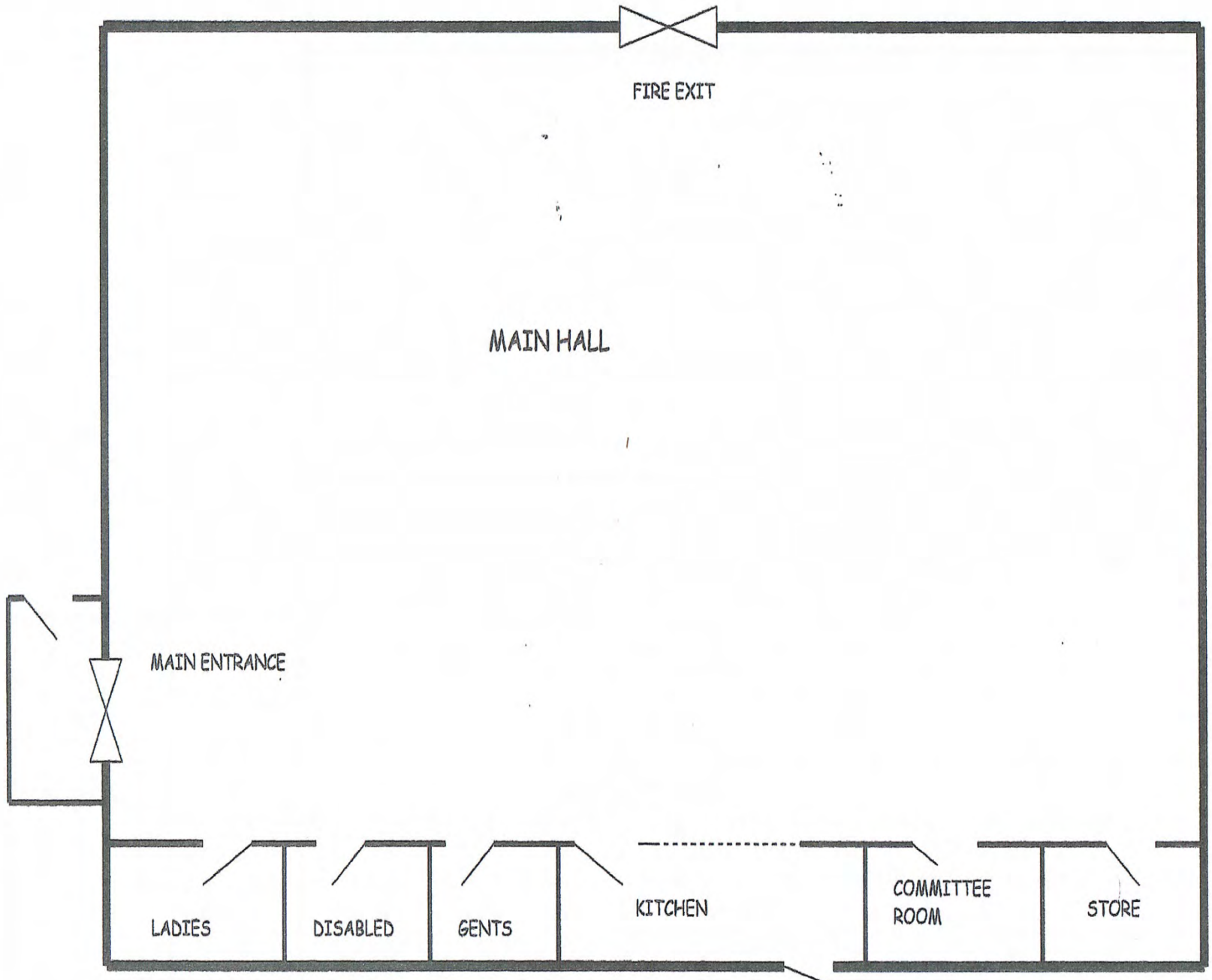
After consultation with the former (SCARF) , Emergency Planning Officer for WDC, Suffolk Coastal District Council and the Environment Agency - the parish council recommended that Kessingland follows the guidance that was given and set up a fully comprehensive Emergency Planning Strategy.

What was the next step

- **Consult with the now Community Action Suffolk and the Local Authority District Emergency Planning Officer**
- **Find a suitable person to compile and maintain a local emergency resource/response plan**
- **Set up an Emergency Co-ordination Group**
- **Identify local premises suitable for a community emergency centre**
- **Recruit local and physical resources to use in an emergency including volunteers**

Continued

- ***Send out Questionnaires to all local households***
- ***Carry out a risk assessment to identify vulnerable residence and property***
- ***Divide area up into manageable sectors***
- ***Incorporate the information in the Community Emergency Plan***
- ***Establish a Control and Command system with terms of reference and area responsibilities***



FIRE EXIT

MAIN HALL

MAIN ENTRANCE

LADIES

DISABLED

GENTS

KITCHEN

COMMITTEE ROOM

STORE

Kessingland – Emergency Questionnaire

KESSINGLAND PARISH COUNCIL – EMERGENCY QUESTIONNAIRE



[tick the box]
Do you have specialist skills ?

Doctor	Paramedic	Nurse	First Aider
Trained Carer	Stress Counsellor	Policeman/woman	Firefighter
Builder	Plumber	Electrician	Engineer
Gas Engineer	Vehicle/Other Mechanic	Plant Driver	Tree Surgeon
Radio Amateur	Neighbourhood Watch Coordinator	Military/Ex Military, less than 10 years	Other

Do you have useful equipment which could be shared in an emergency ?

Lorry	Tractor	4x4 Off Road Vehicle	Quad Bike
Trailer	Snow Cleaning Equipment	Chain Saw	Tarpaulin
Ladder	Generator	Portable Lighting	Portable Heating
Portable Cooking	Water containers	Wheelchair	Wheelbarrow
Communication Equip. two way radios	Bottled Gas	Caravan	Other Useful Kit

Would you be willing to volunteer?

Emergency Comm. Co-Ordinator | Manning Emergency Centre | Outdoor Labour | Coastal Watching (Flooding) | Manning Refuge Centre's

Vulnerable Residents – are you or is anyone in your house, or neighbourhood particularly vulnerable?

Isolation Yes/No	Age	Immobility/ Disability	Need for Medicines	Medical Reasons
---------------------	-----	------------------------	--------------------	-----------------

Your Contact Details.

Name Tel. No. Mobile Phone E-mail

Address Post Code

Data Protection Act – The information given on this form will only be used for the purpose for which it was requested.

When completed the form may be returned to The Parish Clerk, 4 The Spinney, Beccles NR34 7DF or to the Parish Council Chairman, 296 Church Road, Kessingland, NR33 75B

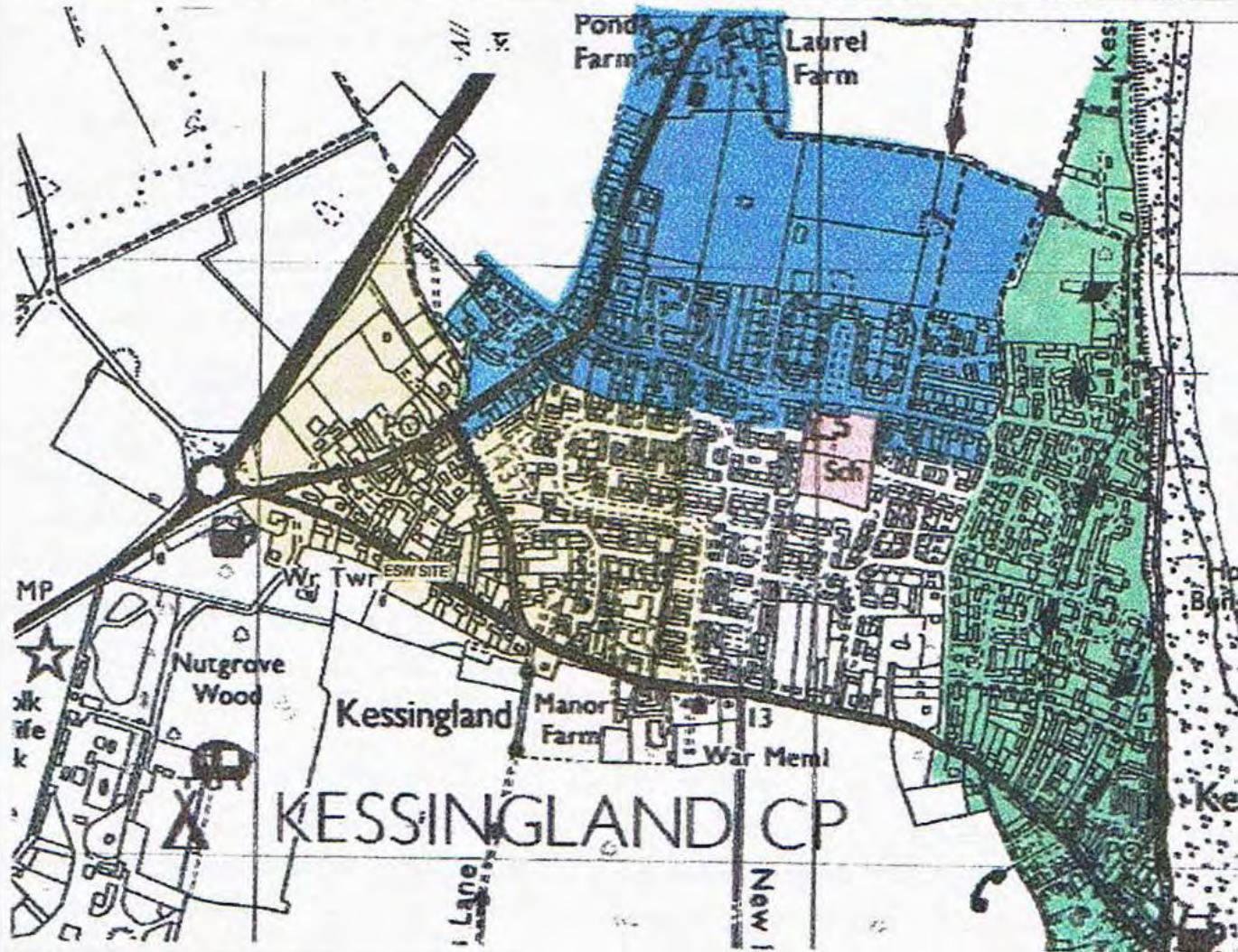
Kessingland-Risk Assessment

RISK ANALYSIS

Short term predictability of sudden impact natural disasters on the village of Kessingland

Class of Hazard	Type	Vulnerability Potential		
		High - [8-10]	Medium - [5-7]	Low - [1-4]
Natural	Earthquake			1
	Volcanic Eruption			1
	Landslide			1
	Accelerated Erosion			1
	Subsidence		5	
	Hurricane			1
	Tornado			1
	Severe Snow and Ice	8		
	Blizzard		6	
	Lightning	8		
	Intense Rainstorm	9		
	Hailstorm		6	
	Fog	9		
	Drought			4
	Tsunami			1
	Exceptional High Tides	9		
	Flooding	9		
	Flash Flood	9		
	Disease Outbreak			1
Avian Bird Flu		6		
Pandemic Flu		6		
Technological				
Hazardous Materials and Substances	Chemical Contamination		5	
	Oil Pollution	8		
	Accident involving transportation of chemicals and hazardous waste		7	
	Radiation emissions			4
	Unexploded Ordnance			4
	Explosives			2
	Aircraft Crash			4
	Damage to power lines	8		
	Long term power cuts	8		
	Gas explosions			4
	Fire at premises that store hazardous materials		5	

Kessingland – proposed sectors



PARISH OF KESSINGLAND - EMERGENCY PLAN

YELLOW SECTOR	BLUE SECTOR	RED SECTOR	WHITE SECTOR	GREEN SECTOR
Ark Close	Barber Close	Marram Green	Church Road (107-155)	Alandale Drive
Badgers Holt	Clare Road	Hall Road	Fellowship Green	Beach Road
Catchpole Close	Dowson Drive		Glebe Road East	Beaconsfield Road
Church Road (up to 105)	Francis Road		Glebe Road West	Belverdere Road
Heritage Green	Field Lane		Hall Road	Bethel Drive
Amber Drive				
Heritage Close				
Lloyds Avenue	Griffith Close		Lowlands Close	Bucknam Close
	Grice Close			
High Street	High Street / The		Manor Walk	Chipperfield Road
Market Place	Archway			
Noahs Drive	Lincoln Court		Mayfield Avenue	Church Road (175 +)
Sanctuary Close	London Road		McLean Drive	Coastguard Lane
Whites Lane	North Acre		Peregrine Way	Coopers Drive
	Ryeburn Close		Smith Crescent	Damerson Went
				Durrants Close
	Scotts Close		Solomon Road	Drury Close
	St Edmunds Crescent		The Nordalls	Fishermans Way
	The Avenue		Turrell Drive	Green Lane
	The Paddocks		WinstonClose	High Path
				Holly Grange Road
				Kipling Close
				Marsh Lane
				North Cliff
				Rider Haggard Lane
				Strowgers Way
				Wash Lane

Kessingland – Emergency Planning Guidelines (Residents Information) Slide 1

If you DON'T need to evacuate your home in an emergency...

Go in, Stay in, Tune in

In most major incidents you will be advised to shelter. **Go In**, stay there until the emergency services say it is safe to move. **Stay In** - and listen to local radio stations for more information - **Tune In**.

1. Go indoors, close doors and windows and shut down ventilation systems if it is safe to do so. Unless there is an obvious risk to the property this will give you good short term protection against most hazards.
2. Stay indoors until you know more about the situation and the appropriate action you need to take to protect yourself further. The action you should take will be different depending on the incident: you could put yourself at more risk by not waiting for further instructions.
3. Tune into local radio and television to find out more about what is happening

BBC Radio Suffolk 95.5, 95.9, 103.9, 104.6 FM
BBC Radio Norfolk 95.1, 95.6, 104.4FM

The Beach 97.4, 103.4FM
Radio Broadland 102.4FM



Kessingland Emergency Plan Guidelines



Emergency Contact Numbers

Name	Number
Gas	0800 111 999
Electricity	08007 838 838
Anglian Water	08457 145 145
Essex & Suffolk Water	08457 820 999
Local Police	
Doctor	
Plumber	
Electrician	
School	
Vet	
Neighbour	

Do what the emergency services tell you – they are the experts!
If you are not directly involved, keep away from the scene and leave it to the emergency services.

What to do in an emergency

- ▶ If you see an emergency dial 999 and tell the Police, Fire, Ambulance or Coastguard.
- ▶ If the building is on fire – Get Out and Stay Out
- ▶ If not, Go In, Stay In, Tune In
- ▶ If possible and safe, pass on the warning to neighbours and check on the vulnerable people living near you
- ▶ Limit phone calls- it keeps lines free. Someone may be trying to contact you

Kessingland – Emergency Planning Guidelines (Residents Information) Slide 2.

If you NEED to evacuate your home in an emergency...

Emergency Plan: where to go if you need to evacuate..

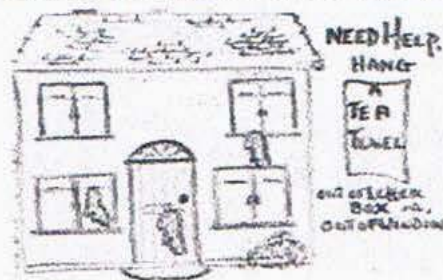
The village has been 'divided' into sectors so that, in the event of a major emergency there will be several designated rest centres for residents to evacuate to:

Methodist Church, Church Road
Community Centre, Francis Road, off Field Lane
St Edmunds Church Hall, Church Road

Kessingland Emergency Plan

A major emergency can affect the whole community and tie up emergency services for some time. The emergency services will attend to the people with the greatest need first.

Kessingland Parish Council have put together this Emergency Plan to assist EVERYONE in the event that we need to evacuate our homes following a major emergency in the village - PLEASE put it somewhere safe - the inside of a kitchen cupboard or the door of your fridge is ideal!



If you are not sure whether to leave your home
- or you require updated information,
hang a tea-towel from your
letterbox or window.
Others will then know that you need help.

If you can help each other it will make
life easier for your community
while you wait for help.

YOUR NEAREST EMERGENCY REST CENTRE IS

If you are mobile, please make your way to the centre as soon as possible, bringing with you...

- ✓ A torch and batteries
- ✓ Candles/matches (in a safe container)
- ✓ Bottles of soft drinks/Snacks/biscuits etc
- ✓ Warm Clothing
- ✓ Blankets/duvets
- ✓ A notebook and pen/pencils
- ✓ Your medicines & spare contact lenses etc
- ✓ Something to occupy the children!
- ✓ Immediate valuables/important documents



Kessingland – Emergency Plan Guidelines – (Residents information – animal welfare)

Animal Welfare

PLEASE KEEP THIS DOCUMENT IN EMERGENCY PACK AT ALL TIMES.

Note to Emergency Co-ordinators:

We are unable to accept animals of any kind into our rest centres.

In the event of short-term public evacuation, pet owners will be advised to leave their animals at home (providing the building is secure) with adequate water and food provision for up to 24hrs, or arrange for their pets to be cared for by friends or relatives out of the incident area.

In the event of possible long-term evacuation, or for those pet owners whose homes are no longer secure, please use the contact numbers below if assistance is required:

Animal Welfare Organisations:

RSPCA Advice Line.....	0300 1234 555
Blue Cross (Head Office).....	01993 822651
PDSA.....	0800 917 2509

Local Veterinary Services:

Coastline Surgery	01502 573982 or 01502 531999
The Veterinary Hospital.....	01502 572141
Three Rivers Veterinary Group	
- Kessingland	01502 741988
- Beccles.....	01502 712169
Wangford Veterinary Clinic.....	01502 578999

Where is Kessingland now

- *The emergency plan is now being updated*
- *We are shortly going to try and recruit more members to the team*
- *Invite other groups and interested people to come to meetings*
- *Get A list of all councils with an emergency plan or interested in setting one up*
- *Try to sort out a mutual help arrangement with equipment and personnel*
- *Try to arrange more training in North Suffolk*

Continued

- ***Arrange First aid, resuscitation for adults & infants and defibrillation training, I would like a team of first responders but it seems the organisation within the ambulance service is reluctant to allow us to do this.***
- ***Is there possibility of setting a first responder team up within the remit of the emergency plan and be affiliated to the Ambulance Service***
- ***Arrange fire extinguisher training***
- ***Rest centre training***
- ***Talks from Fire Service, Environment Agency and Plymouth Brethren who all have experience in a variety of major incidents and floods***

How prepared are you

- ***What would you do if you were isolated in a wide spread emergency and help would be another 24 hours or more.***
- ***Who would take the lead or co-ordinate any local response***
- ***Do you know what local resources could be at your disposal***
- ***Would the resources be put to best use and later integrate them with external assistance***
- ***Do you know the most vulnerable people within your community and their special needs in an emergency***
- ***Are you aware of significant hazards which could be the hazard or make things worse in an emergency***
- ***Do you understand how the emergency services ,local authority and others agencies work together in an emergency***

Awards 2013



Environment Agency award for Adaptation

Winner (Business)

Field Studies Council at Flatford Mill
www.field-studies-council.org

The Centre has been directly involved in planning actions to develop resilience of the business to the effects of climate change including producing more food and flowers from our own gardens, planning for floods, planning for droughts and moving towards zero fossil fuel.



Winner (Community)

Kessingland Emergency Group
www.kessingland.onesuffolk.net

Being a coastal community the first risk is coastal flooding, but the group have extended their risk assessment to include other natural events that are brought about by severe weather conditions linked to climate change. The Emergency Group have prepared a Plan that sets out definitive actions and enables the Community to deal with the consequences of climate change in a way that minimises the risks of loss of life and damage to property.

