



WINTER REPORT 2018

Framlingham and Surrounding Villages

25%

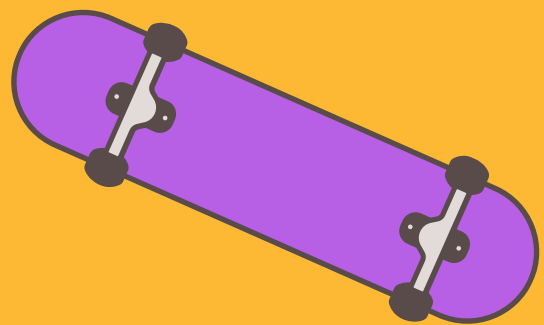
have requested more LGBT groups and community events



Transport is a big issue for the area, with many young people not having access to regular bus services this is impacting on their educational and social opportunities. Other educational concerns include mental health provisions within their school settings, expressing the need for a place to talk and gain advice on mental health worries.

Councillor Hudson Invites you to create positive and practical solutions so that he can raise them on the health and wellbeing agenda.

CREATING A SAFE COMMUNITY



The young people have expressed a concern in community safety and the lack of Police in the area. A potential solution to this in the short term would be improvement to street lighting. They have advised the lights are often too dim and not on late enough.

This brings us onto the next item of interest, which is the skate park. Floodlights at the skate park, and the implementation of a shelter and toilets on site would improve the area and make it more inclusive for all to use.



@YOUTHVOICE_ES