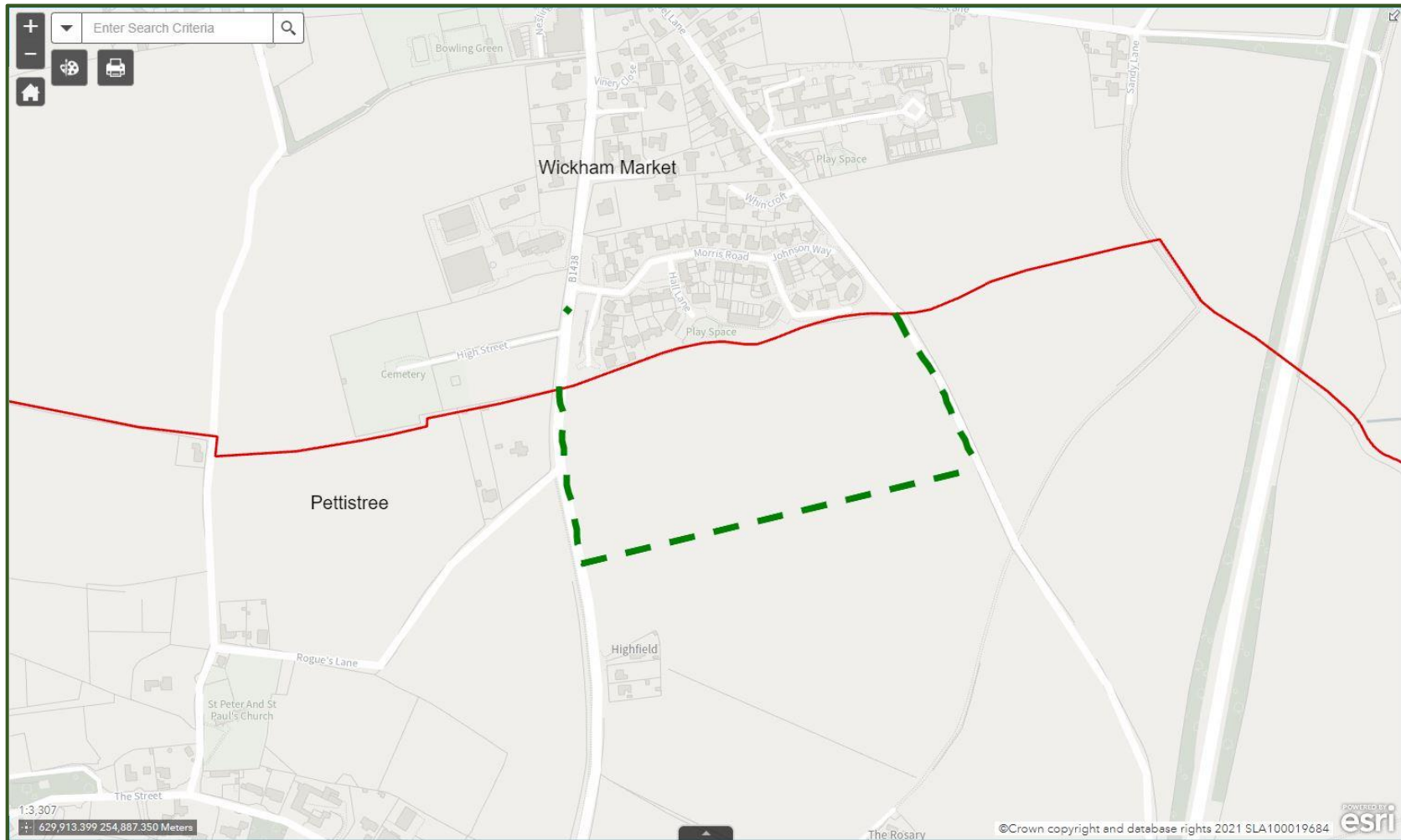


No.	Area or properties under review	Parishes directly affected	Final Recommendation
12	Wickham Gate development area	Wickham Market and Pettistree	Boundary move between Wickham Market and Pettistree – the new Wickham Gate development to be wholly situated within Wickham Market parish.
<b>Final recommendation of CGR Member Working Group</b>			
<p><b>See Map 6</b></p> <p>The boundary between Wickham Market and Pettistree should be moved resulting in the whole of the Wickham Gate development sitting wholly in Wickham Market.</p> <p>The boundary should move as per the green dashed line on Map 6.</p>			
<b>Reasons for recommendation:</b>			
<p>The recommendation has local support – suggestion submitted by Wickham Market and Pettistree Parish Council.</p> <p>The development abuts Wickham Market and over half a mile from the centre of Pettistree. Pettistree is a rural parish and residents of Wickham Gate will look towards Wickham Market for all amenities.</p>			

## Map 6 – Wickham Gate



Current Parish boundary ———

Final recommendation to change boundary - - - - -