

A high-speed photograph of water droplets falling into a pool of water, creating concentric ripples that spread outwards. The water is a clear, vibrant blue, and the droplets are captured in mid-air, creating a sense of motion and freshness. The background is a soft, out-of-focus blue, making the ripples stand out prominently.

Holistic Water Management Project

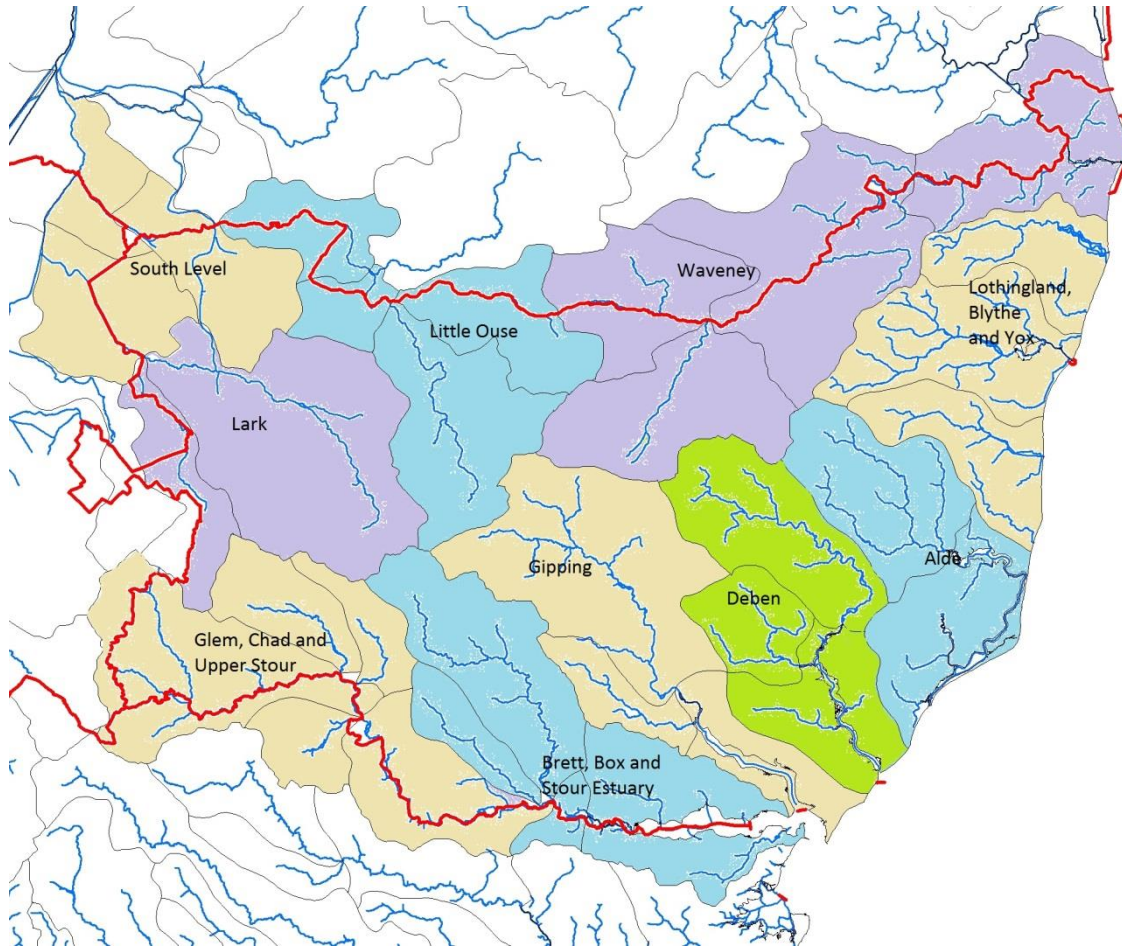
Matt Hullis

Head of Environment Strategy
Suffolk County Council

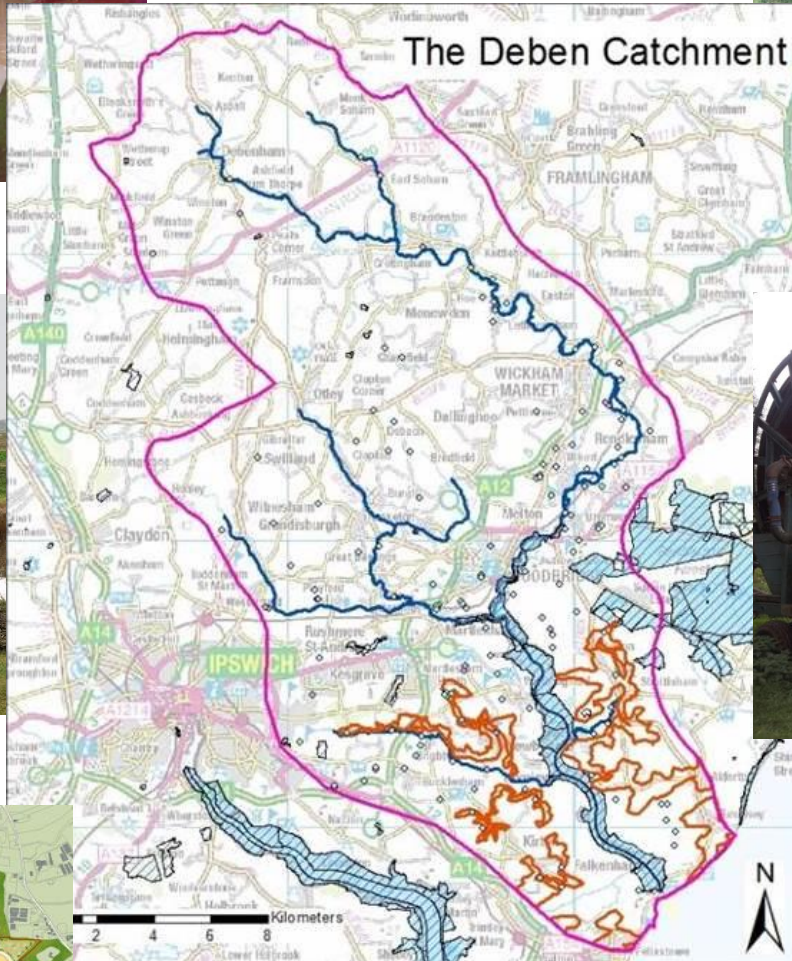
Why ?

- Managing flood risk
- Dealing with risk of drought
- Water dependant wildlife habitats
- Pumping water out to sea to drain land
- More water needed for both agriculture and new development
- Regulation to improve water quality

Choosing the catchment



Catchment	RANK
Deben, Finn and Lark	1
Lothingland to Minsmere	4
Gipping and Orwell	4
Lark and Kennet	4
Alde and Ore	7
Box, Brett, Stour Estuary	7
Waveney and Dove	7
Glem, Chad and Stour	8
Little Ouse and Sapiston	9

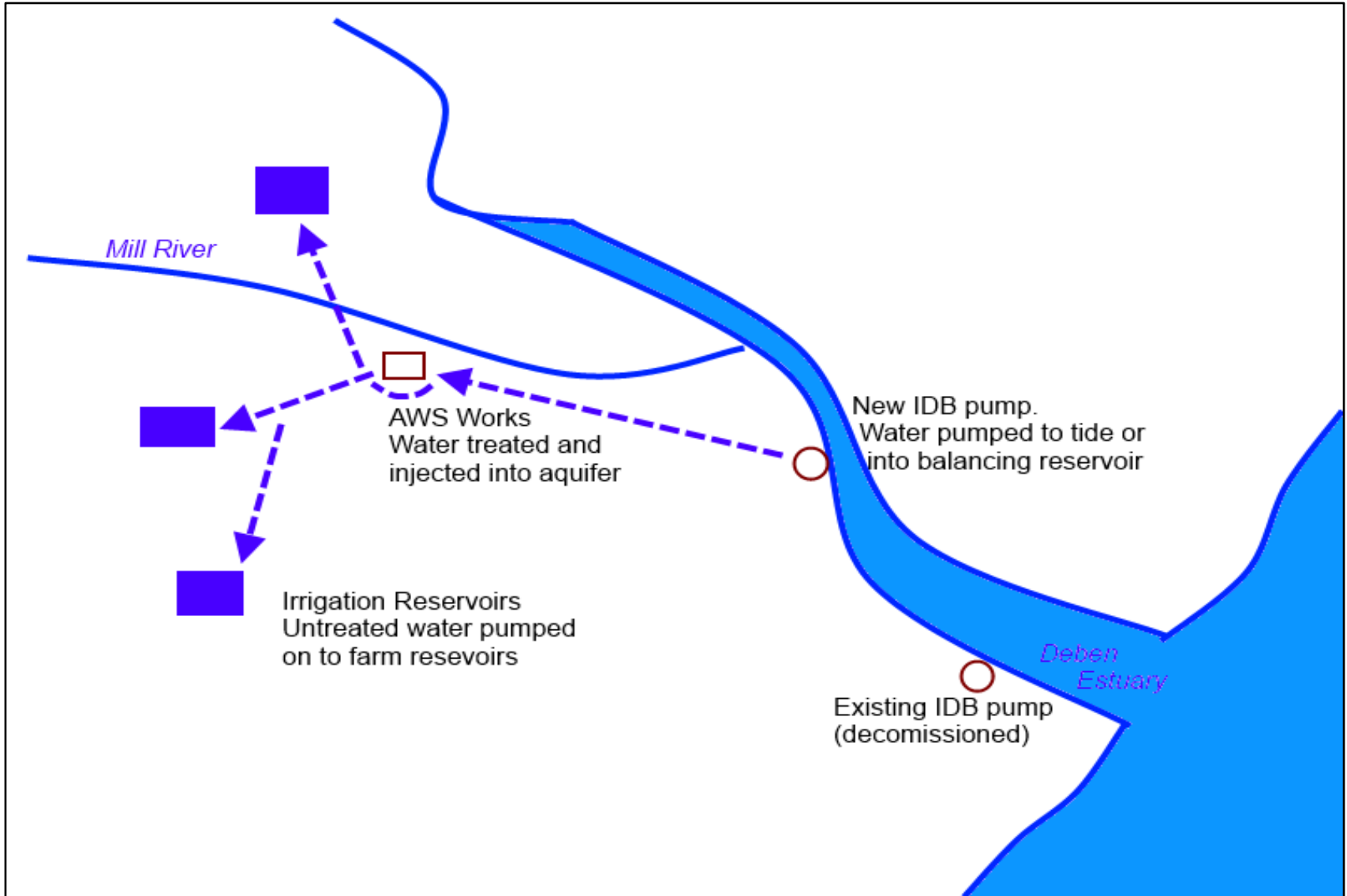


Felixstowe Peninsula project

– facts and figures

- 600 ML of new demand from irrigators
- Circa 1,500 ML water currently pumped to sea
- Economic benefits from more secure water supply for irrigators (est. £1.5-2million/year)
- Potential opportunity for new domestic supply
- Need to replace current infrastructure

Felixstowe Peninsula project



Economic and environmental opportunities

- More reliable water resources = increased agricultural output and resulting increased employment
- Joint investment in new infrastructure, reducing risk
- Making use of “waste” resource without damaging habitats
- Potential release of less sustainable abstraction licences
- Involving wide range of partners in design and siting to ensure environmental benefits are maximised

Felixstowe Peninsula project

- getting it right for the next 25 years

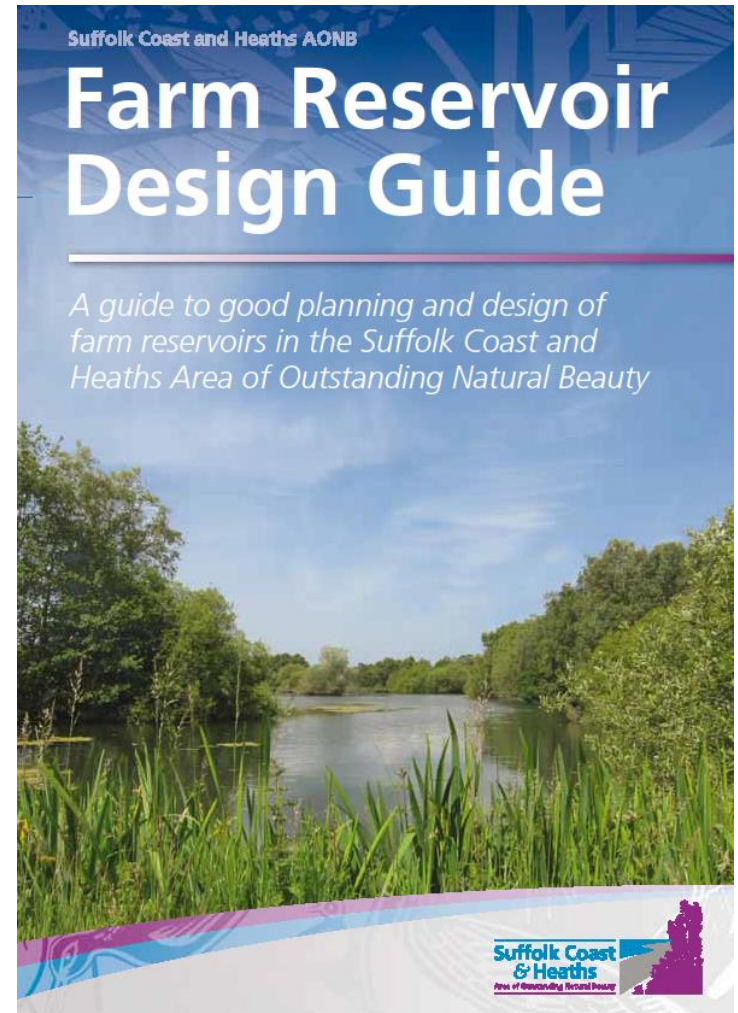
- Improved saltmarsh aids flood resilience of estuary walls
- New pumps are less damaging to threatened species - eels



Streamlining planning and consents for reservoirs

Working together to reduce costs associated with gathering information and satisfying regulators:

- Abstraction licence
- Landscape
- Archaeology
- Ecology
- Planning
- Flood risk



Reservoir design



A partnership approach to maximise environmental, landscape and amenity value without compromising its use



Who is involved in the project?

- Suffolk County Council
- Suffolk Coastal District Council – coastal and planning teams
- Anglian Water – flooding and water resources teams
- Suffolk Coast & Heaths AONB
- Environment Agency - Water Framework Directive, flood risk and water resource teams
- East Suffolk Internal Drainage Board
- East Suffolk Water Abstractors Group
- New Anglia Local Enterprise Partnership
- National Farmers Union
- Country Land & Business Association
- Landowners
- Paul Bradford - Consultant
- Essex & Suffolk Rivers Trust
- Essex & Suffolk Water
- Natural England
- Suffolk Wildlife Trust
- And growing

More information?

Website:

www.greensuffolk.org/hwmp

Contact:

Matt Hullis

Tel: 01473 264446

Email: matt.hullis@suffolk.gov.uk