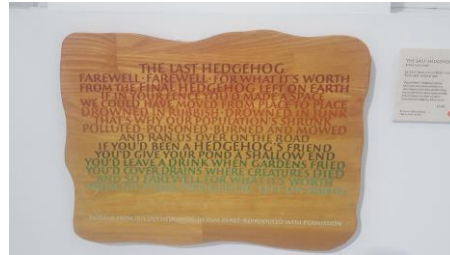
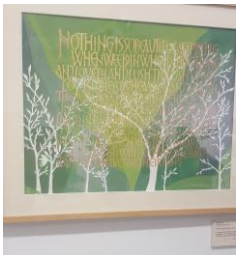
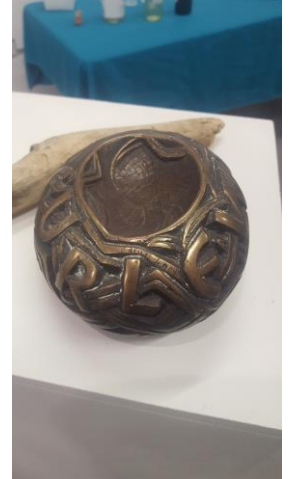


On a Knife Edge / Snape Marshes

[On a Knife Edge](#) is an exhibition with a message. Traditional letter carving has been used to highlight what it is we have at stake in terms of biodiversity.

On Thursday 28th October, 14 members of the Greenprint Forum were treated to an educational demonstration of the art form by Master Lettercarver Eric Marland. Then our hosts Lynne and Karoline shared details of the apprenticeships and journeyman training run by the Lettering Arts Trust. This will help new artists to learn and perfect the skill of letter carving and keep this tradition alive.



Whilst we were at Snape we were also treated to a visit to the adjacent Suffolk Wildlife Trust nature reserve of [Snape Marshes](#) led by the SWT's Wild Learning Officer Charlie Zakss. Charlie and the SWT have also been working alongside the Lettering Arts Trust to run sessions, called "Wild Little Letters", for youngsters from east Suffolk primary schools. The inter-curricula sessions combined nature studies with literacy helping to give local children a greater awareness of their natural surroundings.

Whilst at the marshes we heard how the area has been enhanced to create a mosaic of thriving habitat types since the SWT took control of the land in 2009 thanks to legacy donations, with population of water voles being able to flourish thanks to a successful campaign to eradicate American mink from the reserve. We didn't see or hear the "plop" of any water voles plunging into the water, but we did learn how to look out for their presence by finding blades of grass nibbled at an angle of 45 degrees. Grazing by cattle and ponies help to stimulate a variety of grasses whilst controlling invasives and even creating opportunities for meadow pipits to nest in hollows created by the treading of the cows! Otters too are present here – which was proven to us on the discovery of one of their fishy-smelling "spraints" – left behind at one of their habitual crossing points (see next page for the delightful photo).

Snape Marshes (continued)

Lesley Walduck, the warden for the reserve, told us: "I think a lovely time for a visit to Snape Marshes would be when the spring migrants start arriving towards the end of April/beginning of May. There are whitethroats, sedge warblers, garden warblers, black caps, chiff chaff etc. and lovely wildflowers such as lady's smock which attract orange tip butterflies. We get nightingales too."

Green Snape provide opportunities for anyone who'd like to volunteer on practical conservation tasks at Snape Marshes, and also Priory Wood, which is leased by Snape Parish Council and managed by Green Snape. To find out more contact Green Snape directly via: info@greensnape.org [GreenSnape » Snape Village](#)



"Who dung it?"



Whilst on the theme of volunteering, Charlie advised that the SWT are currently recruiting Wild Learning Team volunteers at Foxburrow Farm, Melton - these are volunteers to help the Learning Team with school visits, family sessions and Forest School sessions, working with all age groups. Volunteers may be recently retired, seeking to change career direction and try out something new, or seeking to increase confidence and experience. No experience is required at all and all training is provided. Anyone interested can contact either Charlie via charlie.zakss@suffolkwildlifetrust.org, or foxburrow.learning@suffolkwildlifetrust.org

<https://www.suffolkwildlifetrust.org/volunteering-opportunities/learning-and-events-volunteer-foxburrow-farm>