

# Leiston Neighbourhood Plan Referendum

# Information Statement

Town and Country Planning, England | Town and Country Planning (Referendums) Regulations 2012 The Neighbourhood Planning (Referendums) (Amendment) Regulations 2016

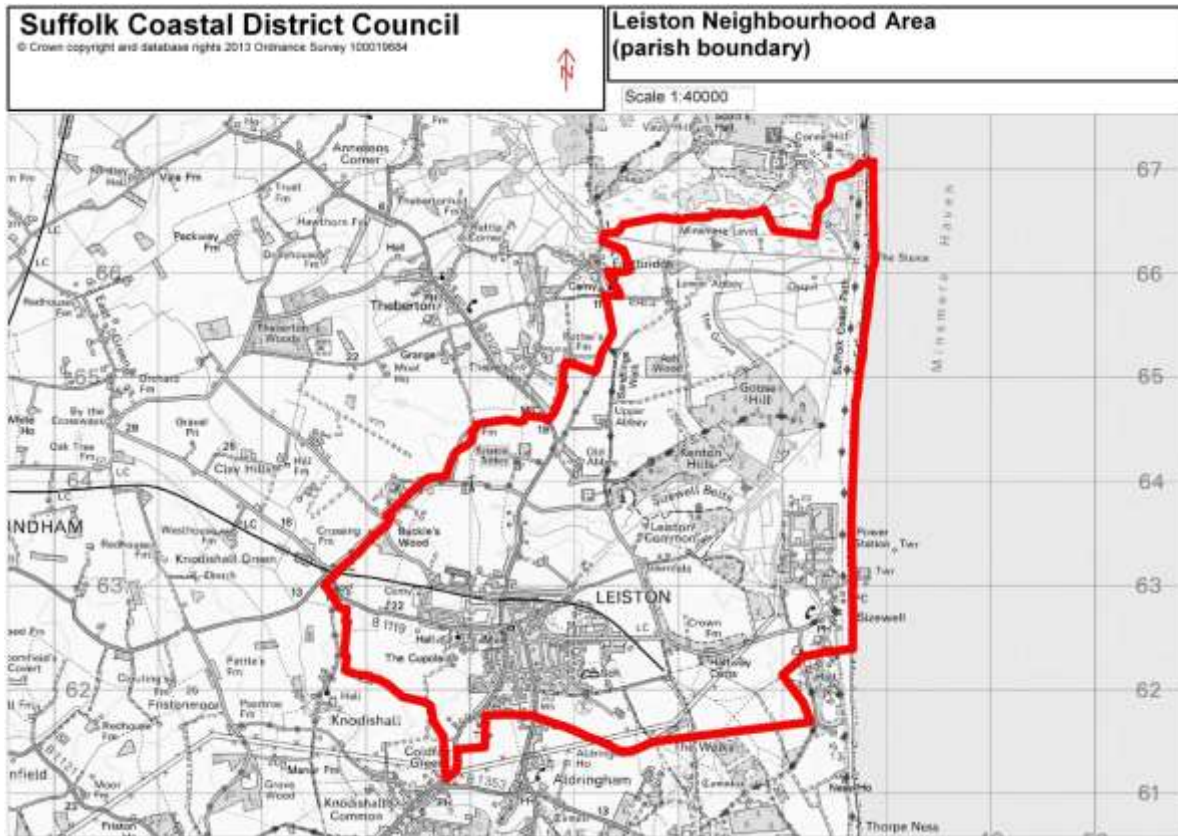
**Referendum Date: 9<sup>th</sup> February 2017**

A Neighbourhood Planning Referendum will be held for the Leiston Neighbourhood Plan on **9<sup>th</sup> February 2017**. The question asked in the referendum will be:

*Do you want Suffolk Coastal District Council to use the Neighbourhood Plan for Leiston to help it decide planning applications in the neighbourhood area?*

# The Referendum Area

The referendum area and the area covered by the neighbourhood plan area is the parish of Leiston as shown below.



A person is entitled to vote in the referendum if on the 9<sup>th</sup> February 2016:

- He or she is entitled to vote in a local government election in the referendum area; and
- His or her qualifying address for the election is in the referendum area. A persons qualifying address is in relation to a person registered in the register of electors, the address in respect of which he or she is entitled to be registered.

The referendum expenses limit will apply in relation to the referendum is £2,605.79. The number of persons entitled to vote in the referendum by reference to which the limit has been calculated is 4,132.

The referendum will be conducted in accordance with procedures similar to those used at local Government Elections.

The Specified Documents which are required to be made available through the referendum period are:

- The draft Leiston Neighbourhood Plan (referendum version)
- The report of the independent examiner
- A summary of the representations submitted to the independent examiner
- A statement by Suffolk Coastal District Council in its role as Local Planning Authority that the draft Neighbourhood Plan meets the basic conditions and Convention rights (Decision Statement)
- A statement that sets out general information as to Town and Country Planning, including Neighbourhood Planning, and the referendum (information for voters).

These documents can be viewed online at:

<http://www.eastsuffolk.gov.uk/planning/neighbourhood-planning/neighbourhood-areas/leiston-neighbourhood-area/>

They are also available for inspection at:

**Suffolk Coastal District Council** (during normal office hours)

East Suffolk House  
Riduna Park  
Station Road  
Melton  
Woodbridge  
IP12 1RT