



## Martlesham Neighbourhood Plan Referendum

# Information Statement

Town and Country Planning, England | Town and Country Planning (Referendums) Regulations 2012 (as amended)

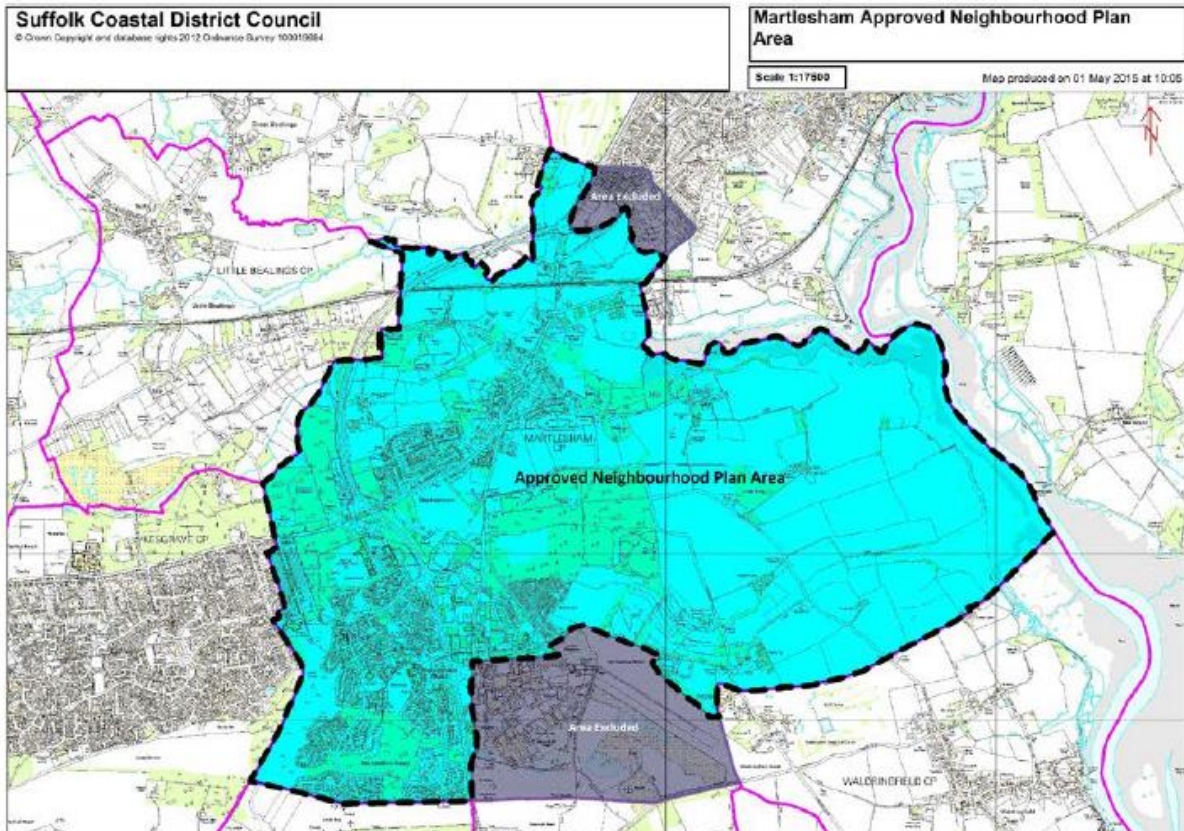
**Referendum Date: 24<sup>th</sup> May 2018**

A Neighbourhood Planning Referendum will be held for the Martlesham Neighbourhood Plan on **24<sup>th</sup> May 2018**. The question asked in the referendum will be:

*Do you want Suffolk Coastal District Council to use the Neighbourhood Plan for Martlesham to help it decide planning applications in the neighbourhood plan area?*

## The Referendum Area

The referendum area is the same as the area covered by the neighbourhood plan as shown below. The neighbourhood area was designated by Suffolk Coastal District Council on 5<sup>th</sup> May 2015:



A person is entitled to vote in the referendum if on the 24<sup>th</sup> May 2018:

- He or she is entitled to vote in a local government election in the referendum area; and
- His or her qualifying address for the election is in the referendum area. A person's qualifying address is in relation to a person registered in the register of electors, the address in respect of which he or she is entitled to be registered.

The referendum expenses limit that will apply in relation to the referendum is £2,625.49. The number of persons entitled to vote in the referendum by reference to which the limit has been calculated is 4,466.

The referendum will be conducted in accordance with procedures similar to those used at local Government Elections.

The Specified Documents which are required to be made available through the referendum period are:

- The draft Martlesham Neighbourhood Plan (Referendum Version)
- The report of the independent examiner
- A summary of the representations submitted to the independent examiner
- A statement by Suffolk Coastal District Council in its role as Local Planning Authority that the draft Neighbourhood Plan meets the basic conditions and Convention rights (Decision Statement)
- A statement that sets out general information as to Town and Country Planning, including Neighbourhood Planning, and the referendum (Information for Voters).

These documents can be viewed online at:

<http://www.eastsuffolk.gov.uk/planning/neighbourhood-planning/neighbourhood-plans-in-the-area/martlesham-neighbourhood-area/>

They are also available for inspection at:

Suffolk Coastal District Council  
Customer Services  
Woodbridge Library  
New Street  
Woodbridge  
IP12 1DT  
(normal office hours)