



# Habitats Regulations Assessment Screening Statement

Worlingham  
Neighbourhood Plan  
2020 – 2036  
(file version 210120)

March 2020

## Contents

1. Introduction .....	1
2. Protected sites covered by this screening report .....	3
3. Draft Worlingham Neighbourhood Plan.....	4
4. Other Plans and Projects.....	5
5. Assessment of likely effects of the Worlingham Neighbourhood Plan on European protected sites.....	7
6. Summary and conclusions .....	12
Appendix 1: Sources of background information .....	13
Appendix 2: Locations of European protected sites.....	14
Appendix 3: Relevant European protected sites .....	17
Appendix 4: Natural England Consultation Response .....	22

## 1. Introduction

1.1 The European Habitats Directive<sup>1</sup> and Wild Birds Directive<sup>2</sup> provide protection for sites that are of exceptional importance in respect of rare, endangered or vulnerable natural habitats and species. The network consists of Special Areas of Conservation (SACs) and Special Protection Areas (SPAs). Both types can also be referred to as European Sites. The National Planning Policy Framework (NPPF) also states that Ramsar sites should be afforded the same level of protection as the European sites.

1.2 The requirement to undertake Habitats Regulation Assessment (HRA) of development plans is set out in the Conservation of Habitats and Species Regulations (2017) (as amended including through EU Exit legislation). It is also a requirement of Regulation 32 schedule 2 of the Neighbourhood Planning Regulations 2012 (as amended). In order to proceed to referendum a Neighbourhood Plan must meet a series of ‘basic conditions’, which include that it does not breach, and is otherwise compatible with, EU obligations.

1.3 Regulation 105 of the Conservation of Habitats and Species Regulations (2017) (as amended including through EU Exit legislation) states:

‘Where a land use plan:

(a) Is likely to have a significant effect on a European sites or a European offshore marine site (either alone or in combination with other plans or projects), and

(b) Is not directly connected with or necessary to the management of the site,

The plan-making authority for that plan must, before the plan is given effect, make an appropriate assessment of the implications for the site in view of that site’s conservation objectives.’

1.4 The HRA is therefore undertaken in stages and should conclude whether or not a proposal or policy in the Plan would adversely affect the integrity of any sites.

---

<sup>1</sup> 92/43/EEC

<sup>2</sup> 2009/147/EEC

Stage 1: Determining whether a plan is likely to have a significant effect on a European site. This needs to take account of the likely impacts in combination with other relevant plans and projects. This assessment should be made using the precautionary principle. The screening assessment must reflect the outcomes of the 2018 judgement of the Court of Justice of the European Union<sup>3</sup>, which has ruled that where mitigation is necessary this must be identified through an Appropriate Assessment.

Stage 2: Carrying out Appropriate Assessment and ascertaining the effect on site integrity. The effects of the plan on the conservation objectives of sites should be assessed, to ascertain whether the plan has an adverse effect on the integrity of a European site.

Stage 3: Identifying mitigation measures and alternative solutions. The aim of this stage is to find ways of avoiding or significantly reducing adverse impacts, so that site integrity is no longer at risk. If there are still likely to be negative impacts, the option should be dropped, unless exceptionally it can be justified by imperative reasons of overriding public interest.

1.5 The Worlingham Neighbourhood Plan is being produced by the Worlingham Neighbourhood Plan Team. A Draft Neighbourhood Plan has been produced and this screening assessment considers whether there are likely to be significant effects on protected European sites and whether a full Appropriate Assessment will be required.

1.6 The Worlingham Neighbourhood Plan will need to be in general conformity with the strategic policies of the Local Plan. The adopted Local Plan is currently the East Suffolk Council Waveney Local Plan adopted on 20 March 2019. The Worlingham Neighbourhood Plan is therefore being developed within the context of the relevant policies contained in the Waveney Local Plan.

---

<sup>3</sup> C-323/17 – People over Wind, Peter Sweetman v Coillte Teoranta

- 1.7 The Waveney Local Plan has been subject to Habitats Regulations Assessment as part of its production. Where screening identified a likely significant effect, an Appropriate Assessment was undertaken and mitigation measures identified were incorporated within the adopted Local Plan, resulting in a conclusion that the plan will not lead to any adverse effects on European wildlife sites within and in the vicinity of the then Waveney District.
- 1.8 This screening report contains the results of Stage 1 (above) in relation to the Draft Neighbourhood Plan. Stages 2 and 3 are only required if the screening stage concludes that there is likely to be a significant impact on a European site. The initial screening has been undertaken by East Suffolk Council and was subject to a five week consultation with Natural England as statutory consultee.

## 2. Protected sites covered by this screening report

- 2.1 Sites included in this assessment are listed in Table 1. This includes all sites that are within 20km of the Worlingham Neighbourhood Plan area (for consistency with the distances applied within the HRA of the Waveney Local Plan and adopting the precautionary approach). The locations of the sites are shown on maps in Appendix 2 and the Qualifying Features and Conservation Objectives of the sites are contained in Appendix 3, along with a summary of the pressures and threats as documented in the Appropriate Assessment for the Waveney Local Plan.

Table 1: Relevant European protected sites

Name
The Broads SAC
Benacre to Easton Bavents Lagoons SAC
Minsmere to Walberswick Heaths and Marshes SAC
Dews Ponds SAC
Southern North Sea SAC
Broadland SPA
Benacre to Easton Bavents SPA
Outer Thames Estuary SPA
Minsmere-Walberswick SPA
Broadland Ramsar

Minsmere-Walberswick Ramsar
-----------------------------

### 3. Draft Worlingham Neighbourhood Plan

- 3.1 The Worlingham Neighbourhood Plan Team is producing a Neighbourhood Plan for Worlingham, in order to set out the vision, objectives and policies for the development of the village up to 2036, within the context of the Waveney Local Plan. This HRA screening assessment reviewed an emerging draft of the Worlingham Neighbourhood Plan in February 2020 during its production.
- 3.2 The Worlingham Neighbourhood Plan as reviewed includes a range of policies covering the Worlingham Neighbourhood Plan area. A number of policies relate to the full Neighbourhood Plan area whilst others are area/location specific. The Plan does not allocate specific sites for development.
- 3.3 The policies in the Draft Worlingham Neighbourhood Plan as reviewed are listed in Table 2 below. An assessment of whether each policy is likely to have a significant effect on European protected sites is included in section 5 of this report.

Table 2: List of Neighbourhood Plan policies

Policy reference	Policy Title
WORL1	Village Identity
WORL2	Housing Mix
WORL3	Lifetime Design
WORL4	Housing Design and Character
WORL5	Heights of dwellings
WORL6	Housing Design - Security
WORL7	Sports Facilities
WORL8	Parking Standards for New Residential Development
WORL9	Parking Standards for Visitor Parking
WORL10	Design of On-Street Parking Provision
WORL11	The Design of Estate Roads and Parking Courts
WORL12	Protection and Enhancement of Key Pedestrian and

	Cycling Routes
WORL13	Landscaping
WORL14	Country Park Landscaping and Management
WORL15	Wildlife Corridors
WORL16	Protection of Local Green Spaces
WORL17	Drainage

## 4. Other Plans and Projects

- 4.1 Regulation 105 of the 2017 Regulations (as amended, including through EU Exit legislation) requires consideration to be given to whether a Plan will have an effect either alone or in combination with other plans or projects.
- 4.2 As noted in the introduction, the other key plan is the Local Plan. The Waveney Local Plan was adopted on 20<sup>th</sup> March 2019. The Waveney Local Plan sets out the broad scale and distribution of development across the area of East Suffolk formerly covered by Waveney District. This has been subject to an Appropriate Assessment as part of its production.
- 4.3 The Draft Worlingham Neighbourhood Plan policies interpret the strategy and policies of the Waveney Local Plan at a local level. The policies contained in the Draft Worlingham Neighbourhood Plan are proposed to provide locally specific, criteria-based policy guidance for the determination of planning applications.
- 4.4 The Worlingham Neighbourhood Plan area includes part of the site allocated in Policy WLP3.1 in the Waveney Local Plan. Policy WLP3.1, the Beccles and Worlingham Garden Neighbourhood in the Waveney Local Plan, provides approximately 1250 new dwellings, a retirement community, 2 form entry primary school, country park, sports facilities, play areas, public space, community hub and employment development on to the south of the built up areas of Beccles town and Worlingham village. The Beccles and Worlingham Garden Neighbourhood site allocated in Policy WLP3.1 is approximately 89.8 hectares and includes land in the parishes of Beccles, Worlingham, and Weston. The Beccles and Worlingham Garden Neighbourhood allocated site WLP3.1 includes land within the Beccles Neighbourhood Plan area, Worlingham Neighbourhood Plan area, and

Mettingham, Barsham, Shipmeadow, Ringsfield and Weston Neighbourhood Plan area. The draft Worlingham Neighbourhood Plan does not propose any site allocations and seeks to deliver dwellings on site WLP3.1 allocated in the Waveney Local Plan through a policy approach which supports residential development as part of a mixed use approach.

- 4.5 A screening process has considered each policy in the Waveney Local Plan and concluded whether significant effects are likely and that an Appropriate Assessment is needed. Where screening identified a likely significant effect, an Appropriate Assessment was undertaken and mitigation measures identified were incorporated within the Plan, resulting in a conclusion that the Plan will not lead to any adverse effects on European wildlife sites within and in the vicinity of the then Waveney District Council. The Appropriate Assessment identified recreational disturbance particularly from dog walkers as the main significant effect. The Council has subsequently finalized and published a Recreational Avoidance and Mitigation Strategy and requires payment towards mitigation from residential developments within 13km of the protected European sites.



## 5. Assessment of likely effects of the Worlingham Neighbourhood Plan on European protected sites

- 5.1 Table 3 below considers each policy of the Draft Worlingham Neighbourhood Plan reviewed in relation to whether there is potential for a likely significant effect on protected European sites. This constitutes Stage 1 as set out under paragraph 1.4 above. Consideration is given to the characteristics and location of the protected sites. The policies are considered within the context of the Local Plan policies which they must be in general conformity with and which have themselves been subject to Habitats Regulations Assessment, as set out in section 4 above.

Table 3: Likely significant effects of the Worlingham Neighbourhood Plan

<b>Policy</b>	<b>Assessment of potential impact on Natura 2000 sites</b>	<b>Natura 2000 sites that could possibly be affected</b>	<b>Likely significant effect identified</b>	<b>AA needed?</b>
WORL1: Village Identity	This policy requires development proposals in Worlingham to evidence how the identity of Worlingham is respected including delineating the parish boundary and avoiding undermining existing amenities. The policy itself will therefore not lead to any likely significant effects.	None	None	No
WORL2: Housing Mix	This policy requires the mix and type of housing units in Worlingham, including on the part of the Beccles and Worlingham Garden Neighbourhood within the NP area, to be based on evidence contained in the Worlingham Housing Needs Assessment (2017) and the District level Strategic Housing Market Assessment. This policy does not allocate land for housing or specify the housing numbers to be provided on the Beccles and Worlingham Garden Neighbourhood with the NP area. Policy WLP3.1 was subject to the Waveney Local Plan HRA. The policy WORL2 will not lead to any likely significant effects.	None	None	No
WORL3: Lifetime Design	This policy requires 40% of new dwellings on the part of the Beccles and Worlingham Garden Neighbourhood within the NP area to meet the requirement of M4(2) of Part M of the Building Regulations for accessible and adaptable dwellings. The Policy WLP8.31 for all new housing developments of 10 or dwellings to make provision for 40% of all to meet M4(2) of the Building Regulations was subject to the Waveney Local Plan HRA. There are no likely significant effects as policy WORL3 is qualitative and does not promote development.	None	None	No
WORL4: Housing Design and Character	This policy requires proposals for 10 or more dwellings to demonstrate regard for key character and design characteristics. There are no likely significant effects identified as the policy itself is qualitative and does not promote development.	None	None	No

WORL5: Heights of dwellings	This policy requires the height of residential development to reflect the prevailing context and limits development of more than three storeys. There are no likely significant effects identified as the policy itself is qualitative and does not promote development.	None	None	No
WORL6: Housing Design - Security	This policy requires residential development proposals to be accompanied by a security statement. There are no likely significant effects identified as the policy itself is qualitative and does not promote development.	None	None	No
WORL7: Sports Facilities	This policy relates to the facilities that form part of the Beccles and Worlingham Garden Neighbourhood (WLP3.1 in the Local Plan) and the need to demonstrate that any facilities proposed within the NP area reflects the needs of the community of Worlingham. This policy does not allocate land for sport facilities. It is considered that the policy may provide some limited benefits through the provision of facilities that meet the needs of the community which could potentially reduce some pressure on protected sites. Therefore, no likely significant effects are identified.	None	None	No
WORL8: Parking Standards for New Residential Development	This policy details the minimum parking standards for new residential developments. The policy seeks to ensure appropriate levels of parking for new residential development. There are no likely significant effects identified as the policy itself is qualitative and does not promote development.	None	None	No
WORL9: Parking Standards for Visitor Parking	This policy details the visitor parking standards for new residential developments. The policy seeks to ensure appropriate levels of parking for new residential development. There are no likely significant effects identified as the policy itself is qualitative and does not promote development.	None	None	No
WORL10: Design of On-Street Parking Provision	This policy details the on-street parking standards for new residential developments. The policy seeks to ensure appropriate levels of parking for new residential development. There are no likely significant effects identified as the policy itself is qualitative and does not promote development.	None	None	No

WORL11: The Design of Estate Roads and Parking Courts	This policy relates to the design and layout of new roads and parking courts. There are no likely significant effects identified as the policy itself is qualitative and does not promote development.	None	None	No
WORL12: Protection and Enhancement of Key Pedestrian and Cycling Routes	This policy relates to existing and proposed pedestrian and cycle routes. The policy requires new development to not have a detrimental impact on existing routes, provide linkages to existing routes. As the policy is aimed specifically at improving access in Worlingham, no likely significant effects are identified.	None	None	No
WORL13: Landscaping	This policy relates to the Beccles and Worlingham Garden Neighbourhood site (WLP3.1 in the Local Plan) and the need for a landscaping scheme and use of native shrubs and trees. Policy WLP3.1 was subject to the Waveney Local Plan HRA. This policy will contribute towards the principles of the enhancement of the wider environment and therefore no likely significant effects are identified.	None	None	No
WORL14: Country Park Landscaping and Management	This policy relates to the country park that forms part of the Beccles and Worlingham Garden Neighbourhood site (WLP3.1 in the Local Plan) and the need for feedback from the local community regarding proposals for the country park. This policy does not allocate land for a country park. Policy WLP3.1 was subject to the Waveney Local Plan HRA. It is considered that the policy could provide some limited benefits through the development and provision of country park that meets the needs of the community which may reduce pressure on protected sites. Therefore, no likely significant effects are identified.	None	None	No.
WORL15: Wildlife Corridors	This policy relates to the Beccles and Worlingham Garden Neighbourhood site (WLP3.1 in the Local Plan) and the need to maximise opportunities to protect and facilitate wildlife corridors, and design them for maximum wildlife value. The Policy WLP3.1 relating to the allocation of the Beccles and Worlingham Neighbourhood was subject to the Waveney Local Plan HRA. This policy will contribute towards the principles of the enhancement of the wider environment and therefore no likely significant effects are identified.	None	None	No

<p>WORL16: Protection of Local Green Spaces</p>	<p>The policy lists three key spaces to be designated Local Green Spaces where development will only be permitted under very special circumstances. This may potentially have some limited benefits to European protected sites by retaining and protecting publicly accessible spaces within Worlingham, thus possibly reducing recreational pressure on European protected sites. Therefore, no likely significant effects are identified.</p>	<p>None</p>	<p>None</p>	<p>No</p>
<p>WORL17: Drainage</p>	<p>This policy relates to the Beccles and Worlingham Garden Neighbourhood site (allocation WLP3.1 in the Local Plan) and the need address water runoff towards the northern boundary of the site, and for Sustainable Drainage Systems. The policy may provide some limited local benefits and contribute towards the principles of the enhancement of the environment. There are no likely significant effects identified.</p>	<p>None</p>	<p>None</p>	<p>No</p>

## 6. Summary and conclusions

- 6.1 The Draft Worlingham Neighbourhood Plan will provide policy which will be used for determining planning applications alongside the Waveney Local Plan. It includes locally specific criteria based policies to be used for the determination of planning applications within the Worlingham Neighbourhood Plan area and the identification of location specific Local Green Spaces.
- 6.2 The Worlingham Neighbourhood Plan is being prepared to be in general conformity with the relevant policies in the Waveney Local Plan. The policies provide locally specific criteria and will not lead to likely significant effects on protected European sites.

Signed:

Dated: 23/04/2020

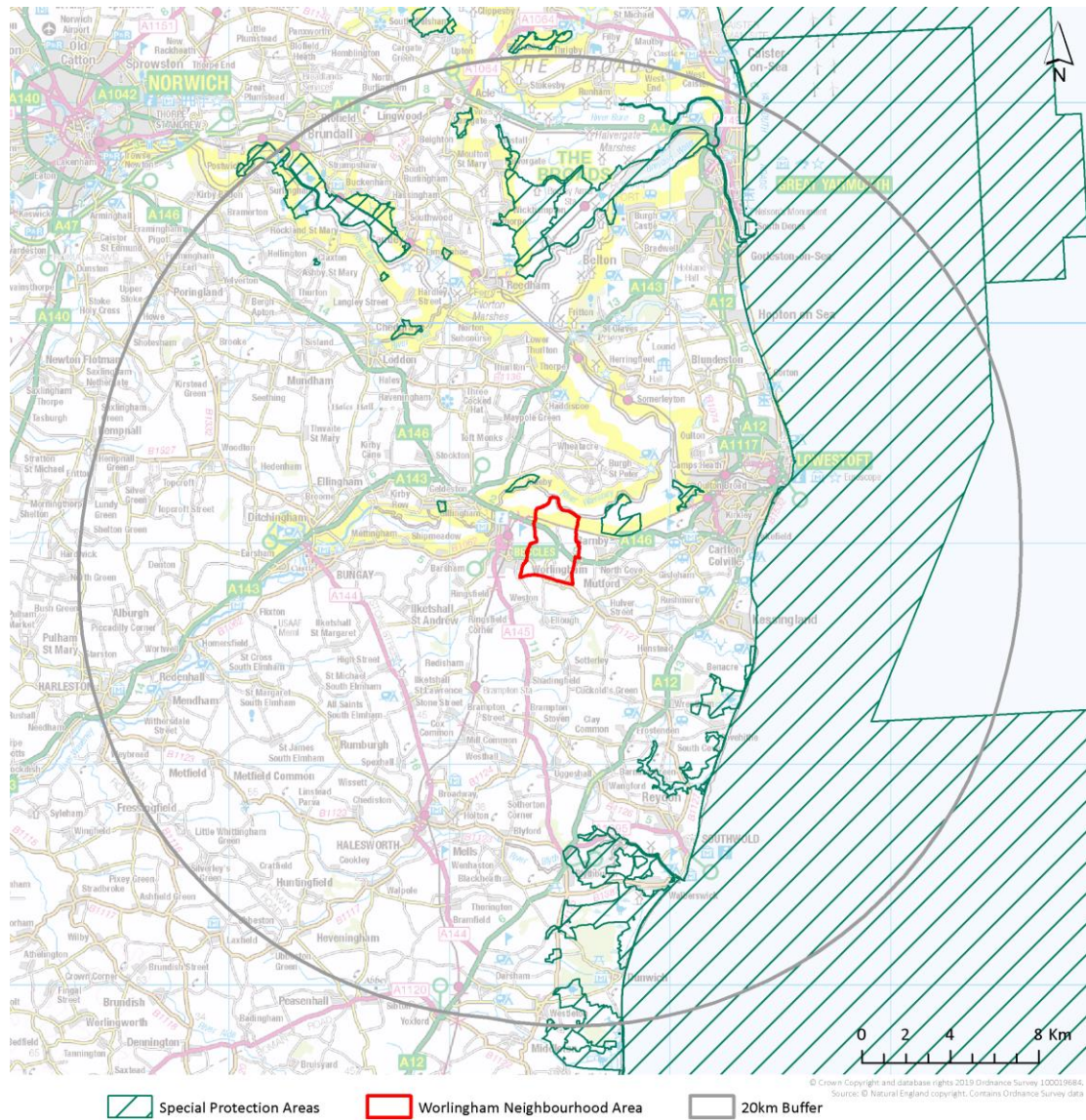
A handwritten signature in black ink that reads "Desi Reed". The signature is written in a cursive style with a large initial 'D'.

Desi Reed  
Planning Policy and Delivery Manager  
East Suffolk Council

## Appendix 1: Sources of background information

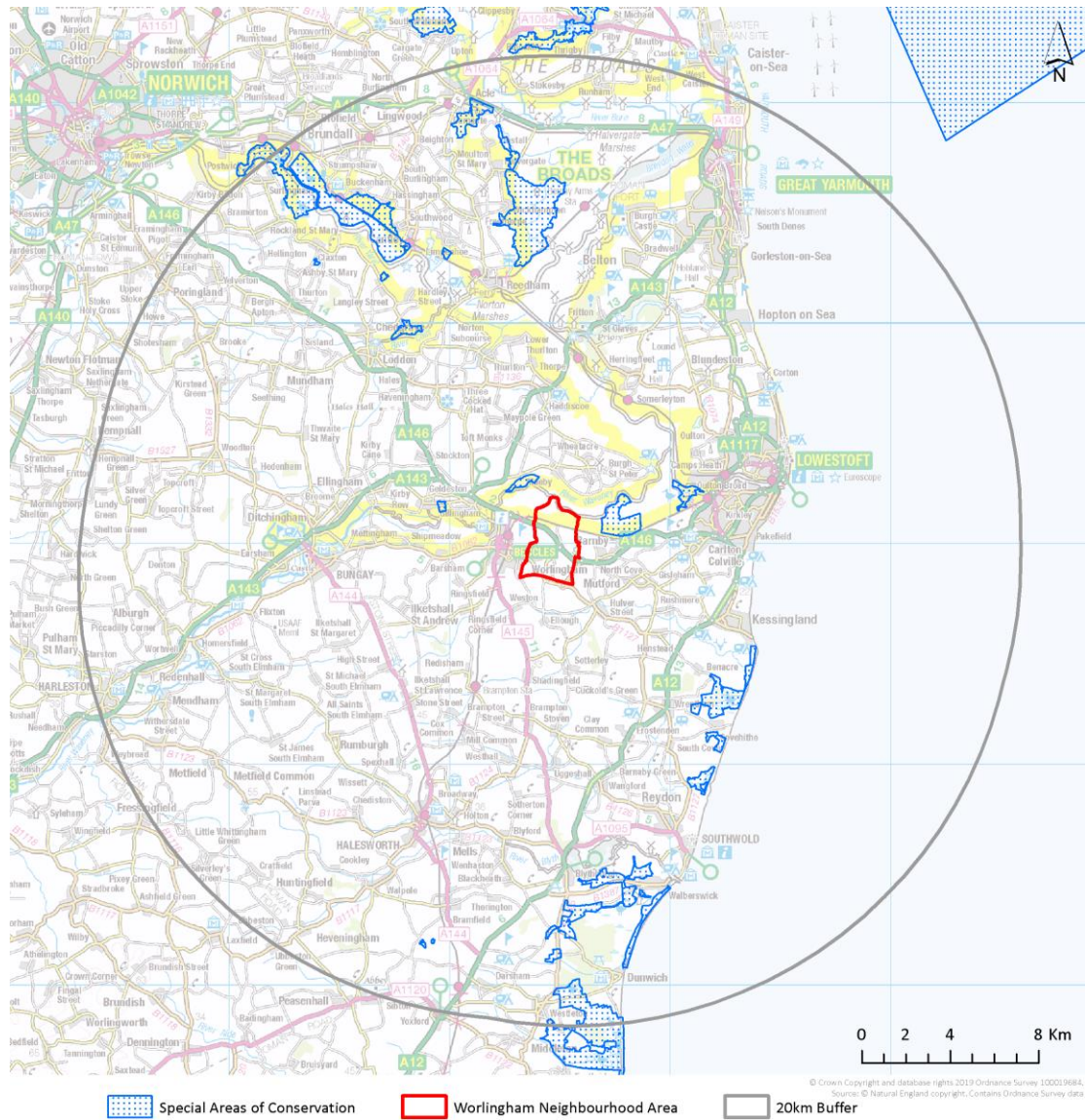
- East Suffolk Council Waveney Local Plan adopted 20 March 2019
- Habitats Regulations Assessment for the Waveney Local Plan (June 2018)
- Habitats Regulations Assessment of the Waveney Local Plan (superseded) for the Final Draft Plan (March 2018)
- Draft Habitats Regulations Screening Report for the First Draft Waveney Local Plan (July 2017)

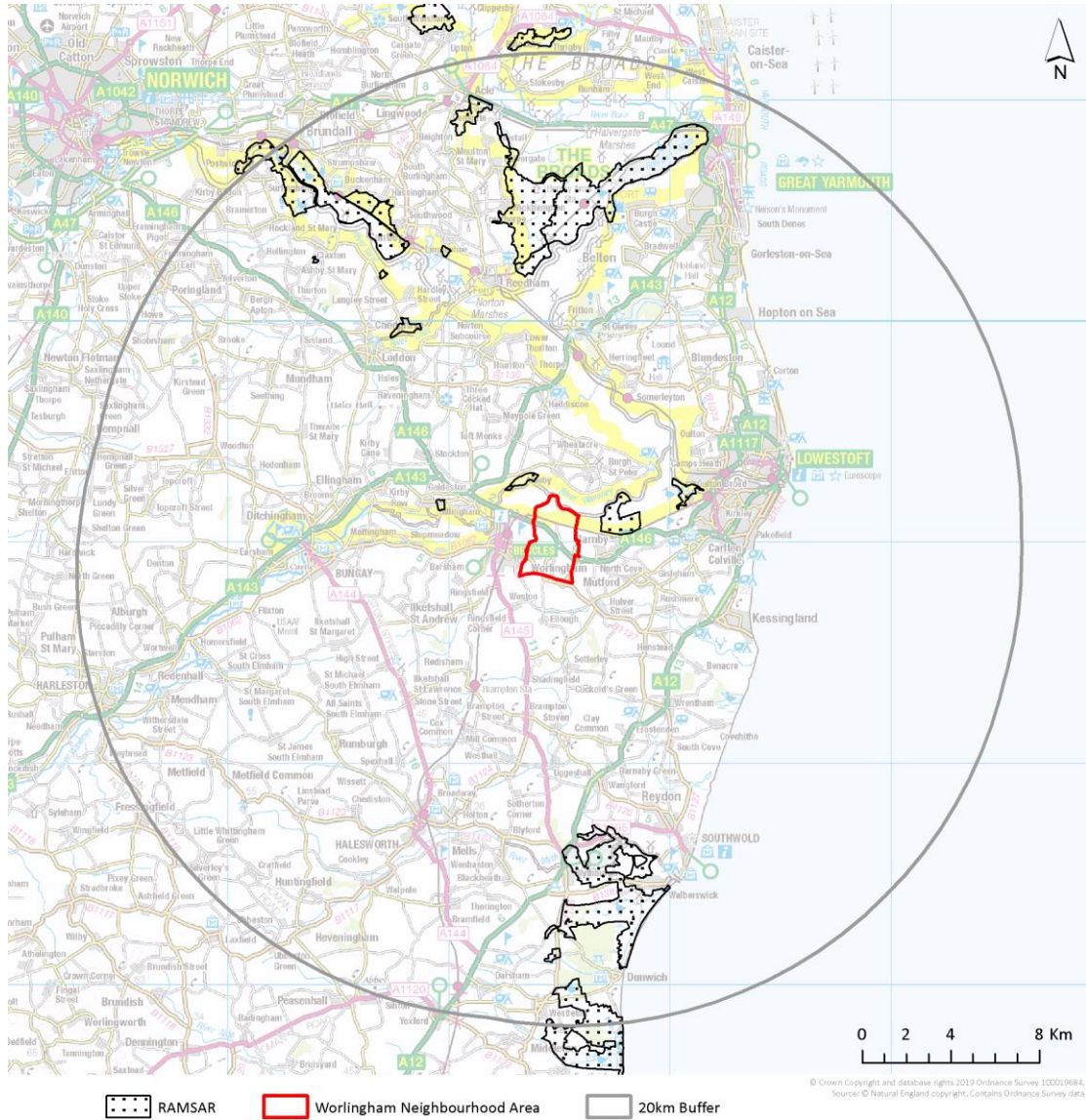
## Appendix 2: Locations of European protected sites





Habitats Regulations Assessment Screening Opinion – March 2020





### Appendix 3: Relevant European protected sites

Name	Qualifying features	Conservation Objectives	Pressure and threats (as summarised in the Habitats Regulations Assessment for the Waveney Local Plan (December 2018))
<b>Special Areas of Conservation</b>			
The Broads	H7210# Calcareous fens with <i>Cladium mariscus</i> and species of the <i>Caricion davallianae</i> S1016 <i>Vertigo moulinsiana</i> : Desmoulin's whorl snail H7230 Alkaline fens H6410 <i>Molinia</i> meadows on calcareous, peaty or clayey-silt-laden soils ( <i>Molinion caeruleae</i> ) H91E0# Alluvial forests with <i>Alnus glutinosa</i> and <i>Fraxinus excelsior</i> ( <i>Alno-Padion</i> , <i>Alnion incanae</i> , <i>Salicion albae</i> ) H7140 Transition mires and quaking bogs H3140 Hard oligo-mesotrophic waters with benthic vegetation of <i>Chara</i> spp H3150 Natural eutrophic lakes with <i>Magnopotamion</i> or <i>Hydrocharition</i> -type vegetation S1355 <i>Lutra lutra</i> : Otter S1903 <i>Liparis loeselii</i> : Fen orchid S4056 <i>Anisus vorticulus</i> : Little ramshorn whirlpool snail	Ensure that the integrity of the site is maintained or restored as appropriate, and ensure that the site contributes to achieving the Favourable Conservation Status of its Qualifying Features, by maintaining or restoring; The extent and distribution of qualifying natural habitats and habitats of qualifying species, The structure and function (including typical species) of qualifying natural habitats, The structure and function of the habitats of qualifying species, The supporting processes on which qualifying natural habitats and the habitats of qualifying species rely, The populations of qualifying species, and, The distribution of qualifying species within the site.	Water pollution, climate change, invasive species, siltation, inappropriate water levels, hydrological changes, water abstraction, change in land management, inappropriate ditch management, inappropriate scrub control, changes in species distributions, public access/disturbance, undergrazing, drainage, direct impact from 3rd party
Benacre to Easton Barents Lagoons	H1150# Coastal lagoons, A195(B) <i>Sterna albifrons</i> : Little tern A021(B) <i>Botaurus stellaris</i> : Great bittern A081(B) <i>Circus aeruginosus</i> : Eurasian marsh harrier	Ensure that the integrity of the site is maintained or restored as appropriate, and ensure that the site contributes to achieving the Favourable Conservation Status of its Qualifying Features, by maintaining or	Public access/disturbance, water pollution, physical modification, changes in species distributions, fisheries (marine and estuarine).

		restoring; The extent and distribution of qualifying natural habitats, The structure and function (including typical species) of qualifying natural habitats, and, The supporting processes on which qualifying natural habitats rely.	
Minsmere to Walberswick Heaths and Marshes	H4030 European dry heaths H1210 Annual vegetation of drift lines H1220 Perennial vegetation of stony banks A052(B) <i>Anas crecca</i> : Eurasian teal A021(B) <i>Botaurus stellaris</i> : Great bittern A081(B) <i>Circus aeruginosus</i> : Eurasian marsh harrier A082(NB) <i>Circus cyaneus</i> : Hen harrier A224(B) <i>Caprimulgus europaeus</i> : European nightjar A056(B) <i>Anas clypeata</i> : Northern shoveler A056(NB) <i>Anas clypeata</i> : Northern shoveler A051(B) <i>Anas strepera</i> : Gadwall A051(NB) <i>Anas strepera</i> : Gadwall A132(B) <i>Recurvirostra avosetta</i> : Pied avocet A195(B) <i>Sterna albifrons</i> : Little tern A394(NB) <i>Anser albifrons</i> : Greater white-fronted goose	Ensure that the integrity of the site is maintained or restored as appropriate, and ensure that the site contributes to achieving the Favourable Conservation Status of its Qualifying Features, by maintaining or restoring; The extent and distribution of qualifying natural habitats and habitats, The structure and function (including typical species) of qualifying natural habitats, and, The supporting processes on which qualifying natural habitats rely.	Coastal squeeze, public access/disturbance, changes in species distributions, invasive species, inappropriate pest control, air pollution, water pollution, deer, fisheries (commercial marine and estuarine)
Dew's Ponds	S1166 <i>Triturus cristatus</i> : Great crested newt	Ensure that the integrity of the site is maintained or restored as appropriate, and ensure that the site contributes to achieving the Favourable Conservation Status of its Qualifying Features, by maintaining or restoring; The extent and distribution of the habitats of qualifying species,	None identified

		<p>The structure and function of the habitats of qualifying species,                  The supporting processes on which the habitats of qualifying species rely,                  The populations of qualifying species, and,                  The distribution of qualifying species within the site.</p>	
Southern North Sea	<b>1351</b> Harbour porpoise <i>Phocoena phocoena</i>	To ensure that the integrity of the site is maintained and that it makes an appropriate contribution to maintaining Favourable Conservation Status (FCS) for harbour porpoise in UK waters.	Site not designated at time of Waveney Local Plan preparation.
<b>Special Protection Areas</b>			
Broadlands (also Ramsar site)	<p>H7210# Calcareous fens with <i>Cladium mariscus</i> and species of the Caricion davallianae                      S1016 <i>Vertigo moulinsiana</i>: Desmoulin's whorl snail                      H7230 Alkaline fens                      H6410 <i>Molinia</i> meadows on calcareous, peaty or clayey-silt-laden soils (Molinion caeruleae)                      H91E0# Alluvial forests with <i>Alnus glutinosa</i> and <i>Fraxinus excelsior</i> (Alno-Padion, Alnion incanae, Salicion albae)                      H7140 Transition mires and quaking bogs                      H3140 Hard oligo-mesotrophic waters with benthic vegetation of <i>Chara</i> spp                      H3150 Natural eutrophic lakes with Magnopotamion or Hydrocharition-type vegetation                      S1355 <i>Lutra lutra</i>: Otter</p>	<p>Ensure that the integrity of the site is maintained or restored as appropriate, and ensure that the site contributes to achieving the Favourable Conservation Status of its Qualifying Features, by maintaining or restoring;                  The extent and distribution of qualifying natural habitats and habitats of qualifying species,                  The structure and function (including typical species) of qualifying natural habitats,                  The structure and function of the habitats of qualifying species,                  The supporting processes on which qualifying natural habitats and the habitats of qualifying species rely,                  The populations of qualifying species, and,                  The distribution of qualifying species within the site.</p>	<p>Water pollution, climate change, invasive species, siltation, inappropriate water levels, hydrological changes, water abstraction, change in land management, inappropriate ditch management, inappropriate scrub control, changes in species distributions, public access/disturbance, undergrazing, drainage, direct impact from 3rd party</p>

	S1903 <i>Liparis loeselii</i> : Fen orchid S4056 <i>Anisus vorticulus</i> : Little ramshorn whirlpool snail		
Benacre to Easton Bvents	H1150# Coastal lagoons, A195(B) <i>Sterna albifrons</i> : Little tern A021(B) <i>Botaurus stellaris</i> : Great bittern A081(B) <i>Circus aeruginosus</i> : Eurasian marsh harrier	Ensure that the integrity of the site is maintained or restored as appropriate, and ensure that the site contributes to achieving the aims of the Wild Birds Directive, by maintaining or restoring; The extent and distribution of the habitats of the qualifying features, The structure and function of the habitats of the qualifying features, The supporting processes on which the habitats of the qualifying features rely, The population of each of the qualifying features, and, The distribution of the qualifying features within the site.	Public access/disturbance, water pollution, physical modification, changes in species distributions, fisheries (marine and estuarine).
Minsmere to Walberswick (also Ramsar site)	H4030 European dry heaths H1210 Annual vegetation of drift lines H1220 Perennial vegetation of stony banks A052(B) <i>Anas crecca</i> : Eurasian teal A021(B) <i>Botaurus stellaris</i> : Great bittern A081(B) <i>Circus aeruginosus</i> : Eurasian marsh harrier A082(NB) <i>Circus cyaneus</i> : Hen harrier A224(B) <i>Caprimulgus europaeus</i> : European nightjar A056(B) <i>Anas clypeata</i> : Northern shoveler A056(NB) <i>Anas clypeata</i> : Northern shoveler A051(B) <i>Anas strepera</i> : Gadwall A051(NB) <i>Anas strepera</i> : Gadwall A132(B) <i>Recurvirostra avosetta</i> : Pied avocet	Ensure that the integrity of the site is maintained or restored as appropriate, and ensure that the site contributes to achieving the aims of the Wild Birds Directive, by maintaining or restoring; The extent and distribution of the habitats of the qualifying features, The structure and function of the habitats of the qualifying features, The supporting processes on which the habitats of the qualifying features rely, The population of each of the qualifying features, and, The distribution of the qualifying features within the site.	Coastal squeeze, public access/disturbance, changes in species distributions, invasive species, inappropriate pest control, air pollution, water pollution, deer, fisheries (commercial marine and estuarine)

	A195(B) <i>Sterna albifrons</i> : Little tern A394(NB) <i>Anser albifrons albifrons</i> : Greater white-fronted goose		
Outer Thames Estuary	A001 (W) <i>Gavia stellate</i> Red-throated Diver A195 (B) <i>Sterna hirundo</i> Common Tern A193 (B) <i>Sternula albifrons</i> Little Tern	Ensure that the integrity of the site is maintained or restored as appropriate, and ensure that the site contributes to achieving the aims of the Wild Birds Directive, by maintaining or restoring; The extent and distribution of the habitats of the qualifying features, The structure and function of the habitats of the qualifying features, The supporting processes on which the habitats of the qualifying features rely, The population of each of the qualifying features, and, The distribution of the qualifying features within the site.	

## Appendix 4: Natural England Consultation Response

Date: 24 February 2020  
Our ref: 309227 & 309228



Ms Ruth Bishop  
Senior Planning Policy and Delivery Officer  
East Suffolk Council  
[Ruth.Bishop@eastsuffolk.gov.uk](mailto:Ruth.Bishop@eastsuffolk.gov.uk)

Hornbeam House  
Crewe Business Park  
Electra Way  
Crewe  
Cheshire  
CW1 6GJ

T 0300 060 3900

**BY EMAIL ONLY**

Dear Ms Bishop

### **Draft Worlingham Neighbourhood Plan SEA Screening and HRA Screening**

Thank you for your consultation on the above dated 17 February 2020 which was received by Natural England on 17 February 2020.

Natural England is a non-departmental public body. Our statutory purpose is to ensure that the natural environment is conserved, enhanced, and managed for the benefit of present and future generations, thereby contributing to sustainable development.

### **Screening Request: Strategic Environmental Assessment and HRA Report**

It is our advice, on the basis of the material supplied with the consultation, that, in so far as our strategic environmental interests (including but not limited to statutory designated sites, landscapes and protected species, geology and soils) are concerned, that there are unlikely to be significant environmental effects from the proposed plan.

### **Neighbourhood Plan**

Guidance on the assessment of Neighbourhood Plans, in light of the Environmental Assessment of Plans and Programmes Regulations 2004 (as amended), is contained within the [National Planning Practice Guidance](#). The guidance highlights three triggers that may require the production of an SEA, for instance where:

- a neighbourhood plan allocates sites for development
- the neighbourhood area contains sensitive natural or heritage assets that may be affected by the proposals in the plan
- the neighbourhood plan may have significant environmental effects that have not already been considered and dealt with through a sustainability appraisal of the Local Plan.

We have checked our records and based on the information provided, we can confirm that in our view the proposals contained within the plan will not have significant effects on sensitive sites that Natural England has a statutory duty to protect.

We are not aware of significant populations of protected species which are likely to be affected by the policies / proposals within the plan. It remains the case, however, that the responsible authority should provide information supporting this screening decision, sufficient to assess whether protected species are likely to be affected.



Notwithstanding this advice, Natural England does not routinely maintain locally specific data on all potential environmental assets. As a result the responsible authority should raise environmental issues that we have not identified on local or national biodiversity action plan species and/or habitats, local wildlife sites or local landscape character, with its own ecological and/or landscape advisers, local record centre, recording society or wildlife body on the local landscape and biodiversity receptors that may be affected by this plan, before determining whether an SA/SEA is necessary.

Natural England also concurs with the conclusions of the HRA screening Report.

Please note that Natural England reserves the right to provide further comments on the environmental assessment of the plan beyond this SEA/SA screening stage, should the responsible authority seek our views on the scoping or environmental report stages. This includes any third party appeal against any screening decision you may make.

For any new consultations, or to provide further information on this consultation please send your correspondences to [consultations@naturalengland.org.uk](mailto:consultations@naturalengland.org.uk).

Yours sincerely

Clare Foster  
Consultations Team