



Habitats Regulations Assessment Screening Statement

**Draft Sustainable Construction
Supplementary Planning Document**

October 2021

Contents

1. Introduction	1
2. Protected sites covered by this report	1
3. Sustainable Construction Supplementary Planning Document	1
4. Other Plans and Projects	1
5. Assessment of likely significant effects of the Draft Sustainable Construction Supplementary Planning Document (SPD) on Habitat sites	3
6. Summary and conclusions	11
Appendix 1: Sources of background information	12
Appendix 2: Locations of Habitat sites	13
Habitat sites within 20km of the East Suffolk Council- Waveney Local Plan Area	13
Habitat sites within 20km of the East Suffolk Council- Suffolk Coastal Local Plan Area	17
Appendix 3: Relevant Habitat sites	21
Appendix 4: Natural England Consultation Response	31

1. Introduction

1.1 The Conservation of Habitats and Species Regulations (2017) (as amended) provide protection for sites that are of exceptional importance in respect of rare, endangered or vulnerable natural habitats and species. The network consists of Special Areas of Conservation (SACs) and Special Protection Areas (SPAs). Both types can also be referred to as European Sites. The National Planning Policy Framework (NPPF) states that Ramsar sites should be afforded the same level of protection and refers to SACs, SPAs and Ramsar sites as 'Habitat Sites'.

1.2 The requirement to undertake Habitats Regulation Assessment (HRA) of plans and projects is set out in the Conservation of Habitats and Species Regulations (2017) (as amended).

1.3 Regulation 105 of the Conservation of Habitats and Species Regulations (2017) states:

'Where a land use plan:

(a) Is likely to have a significant effect on a European site or a European offshore marine site (either alone or in combination with other plans or projects), and

(b) Is not directly connected with or necessary to the management of the site, The plan-making authority for that plan must, before the plan is given effect, make an appropriate assessment of the implications for the site in view of that site's conservation objectives.'

1.4 The HRA is therefore undertaken in stages and should conclude whether or not a proposal or policy would adversely affect the integrity of any sites.

Stage 1: Determining whether a plan is likely to have a significant effect on a European site. This needs to take account of the likely impacts in combination with other relevant plans and projects. This assessment should be made using the precautionary principle. The screening assessment must reflect the outcomes of the 2018 judgement of the Court of Justice of the European

Union¹, which has ruled that where mitigation is necessary this must be identified through an Appropriate Assessment.

Stage 2: Carrying out Appropriate Assessment and ascertaining the effect on site integrity. The effects of the plan on the conservation objectives of sites should be assessed, to ascertain whether the plan has an adverse effect on the integrity of a European site.

Stage 3: Identifying mitigation measures and alternative solutions. The aim of this stage is to find ways of avoiding or significantly reducing adverse impacts, so that site integrity is no longer at risk. If there are still likely to be negative impacts, the option should be dropped, unless exceptionally it can be justified by imperative reasons of overriding public interest.

1.5 The draft Sustainable Construction Supplementary Planning Document (SPD) is being produced by East Suffolk Council. The SPD will apply to the whole of the East Suffolk Council area, outside of the Broads. This report considers whether there are likely to be significant effects on protected Habitat sites and where a full Appropriate Assessment may be required.

1.6 East Suffolk (outside of the Broads) is covered by two Local Plans, the East Suffolk Council - Suffolk Coastal Local Plan adopted September 2020 and the Waveney Local Plan adopted March 2019.

1.7 Both Local Plans were subject to Habitats Regulations Assessment as part of their production. Where screening identified a likely significant effect, Appropriate Assessment was undertaken and the mitigation measures identified were incorporated within the Plans, resulting in conclusions that the plans will not lead to any adverse effects on Habitat sites within and in the vicinity of the (then) Suffolk Coastal and Waveney Districts. Both Appropriate Assessments identified recreational disturbance particularly from dog walkers as a significant effect. The Council has subsequently produced a Recreational Avoidance and Mitigation Strategy and requires payment towards mitigation from residential developments within 13km of the protected Habitat sites.

¹ C-323/17 – People over Wind, Peter Sweetman v Coillte Teoranta

2. Protected sites covered by this report

2.1 Sites included in this assessment are listed in Table 1. This includes all sites that are within 20km of East Suffolk. The locations of the sites are shown on maps in Appendix 2 and the Qualifying Features and Conservation Objectives of the sites are contained in Appendix 3, along with a summary of the pressures and threats as documented in the Appropriate Assessments for the Local Plans.

Table 1: Relevant Habitat sites

Name
Alde-Ore and Butley Estuaries SAC,
Alde-Ore Estuary SPA, Ramsar
Benacre to Easton Barents SPA
Benacre to Easton Barents Lagoons SAC
Breydon Water SPA, Ramsar
Broadland SPA, Ramsar
Deben Estuary SPA, Ramsar
Dew's Ponds SAC
Great Yarmouth North Denes SPA
Haisborough, Hammond and Winterton SAC
Minsmere to Walberswick Heaths & Marshes SAC
Minsmere – Walberswick SPA, Ramsar
Norfolk Valley Fens SAC
Outer Thames Estuary SPA
Orfordness – Shingle Street SAC
Sandlings SPA
Southern North Sea SAC
Staverton Park and The Thicks, Wantisden SAC
Stour and Orwell Estuaries SPA, Ramsar
The Broads SAC
Winterton-Horseley Dunes SAC

3. Sustainable Construction Supplementary Planning Document

- 3.1 This HRA report reviews an early draft of the Sustainable Construction Supplementary Planning Document (SPD).
- 3.2 The draft Sustainable Construction SPD provides information and advice on a range of topics including energy efficiency, renewable energy, water conservation, and use of materials. The guidance contained in the draft SPD will assist in the implementation of Local Plan and Neighbourhood Plan policies for East Suffolk. The SPD, when adopted, will be a material consideration in the determination of applications for planning permission. The SPD does not cover parts of East Suffolk that are within the Broads, for which the Broads Authority is the local planning authority.
- 3.3 Chapter 1 of the SPD is descriptive, setting out Council's commitment to fighting climate change, explaining the policy context and purpose of the SPD. This section is descriptive and has therefore not been included in the screening table in section 5 of this report.
- 3.5 Other chapters in the SPD provide detailed guidance on the different aspects of sustainable construction policies. These chapters cover a number of aspects and considerations, including: water efficiency and management, energy efficiency and carbon reduction, siting and orientation, materials, waste, sustainable construction and the historic and natural environments, renewable and low carbon energy, construction methods and healthy buildings and places. The SPD also includes further guidance for those making planning applications.
- 3.5 The SPD also includes appendices. These provide additional detail to support the main body of the SPD but do not in themselves introduce any new requirements and have therefore not been included in the screening table in section 5 of this report.

4. Other Plans and Projects

4.1 Regulation 105 of the Habitats Regulations requires consideration to be given to whether a Plan will have an effect either alone or in combination with other plans or projects.

4.2 As noted in the introduction, the other key plans are the Local Plans. The Local Plans set out the broad scale and distribution of development across the area of East Suffolk formerly covered by Suffolk Coastal District and Waveney District.

4.3 The draft Sustainable Construction Supplementary Planning Document (SPD) adds detail to a number of policies within both the Suffolk Coastal Local Plan and the Waveney Local Plan, specifically:

Suffolk Coastal Local Plan:

- Policy SCLP7.1: Sustainable Transport
- Policy SCLP8.2: Open Space
- Policy SCLP9.1: Low Carbon & Renewable Energy
- Policy SCLP9.2: Sustainable Construction
- Policy SCLP9.3: Coastal Change Management Area
- Policy SCLP9.4: Coastal Change Rollback or Relocation
- Policy SCLP9.5: Flood Risk
- Policy SCLP9.6: Sustainable Drainage Systems
- Policy SCLP9.7: Holistic Water Management
- Policy SCLP10.1: Biodiversity and Geodiversity

Waveney Local Plan

- Policy WLP8.24: Flood Risk
- Policy WLP8.25: Coastal Change Management Area
- Policy WLP8.26: Relocation and Replacement of Development Affected by Coastal Erosion
- Policy WLP8.27: Renewable and Low Carbon Energy
- Policy WLP8.28: Sustainable Construction
- Policy WLP8.30: Design of Open Spaces
- Policy WLP8.31: Lifetime Design
- Policy WLP8.34: Biodiversity and Geodiversity

- 4.4 A screening process considered each policy in the Suffolk Coastal and Waveney Local Plans and concluded whether significant effects were likely and if Appropriate Assessment was therefore needed. The Appropriate Assessments of the Suffolk Coastal and Waveney Local Plans considered the following themes:
- Recreation pressure,
 - Air quality and traffic emissions,
 - Biodiversity net gain,
 - Urbanisation,
 - Water quality, resources and treatment, and
 - Flood risk and coastal erosion.
- 4.5 Mitigation measures were identified within the Appropriate Assessments and incorporated within both Local Plans, resulting in a conclusion that neither plan would lead to any adverse effects on Habitat sites within and in the vicinity of the (then) Suffolk Coastal and Waveney Districts.

5. Assessment of likely significant effects of the Draft Sustainable Construction Supplementary Planning Document (SPD) on Habitat sites

- 5.1 Table 3 below considers each relevant section of the draft Sustainable Construction Supplementary Planning Document (SPD) in relation to whether there is potential for a likely significant effect on protected Habitat sites. This constitutes Stage 1 as set out under paragraph 1.4 above. Consideration is given to the characteristics and location of the protected sites. The relevant sections are considered within the context of the Local Plan policies from which they hang and which have themselves been subject to Habitats Regulations Assessment, as set out in section 4 above.

Table 3: Likely significant effects of the Draft Sustainable Construction Supplementary Planning Document

Chapter	Assessment of potential impact on Habitat sites	Habitat sites that could possibly be affected	Likely significant effect identified	AA needed?
2. Water Efficiency and Management	<p>This chapter outlines the policy requirements in relation to water efficiency and management, and provides specific guidance and advice on the following aspects: efficiency and holistic management; designing for water efficiency; sustainable drainage and flood risk; and, sustainable drainage systems. The requirements in this chapter directly address flood risk and water quality, resources and treatment- two of the themes considered through the Local Plan HRAs.</p> <p>This chapter provides detailed guidance for those considering these specific elements of sustainable construction in schemes. The guidance contained here does not in itself promote new development and will therefore not lead to likely significant effects on Habitat Sites.</p> <p>This chapter also references local plan policies relating to coastal change and</p>	None	None	No

Chapter	Assessment of potential impact on Habitat sites	Habitat sites that could possibly be affected	Likely significant effect identified	AA needed?
	<p>highlights the emerging Coastal Adaptation SPD currently being prepared. The Coastal Adaptation SPD will provide further detailed guidance on this matter. This chapter is descriptive and does not in itself promote new development and will therefore not lead to likely significant effects on Habitat Sites.</p>			
<p>3. Energy Efficiency and Carbon Reduction</p>	<p>This chapter defines many of the terms associated with energy efficiency and carbon reduction and provides guidance on calculating whole life carbon. The policy provides further detail in respect of reducing CO2 emissions from developments and retrofitting works. The chapter also clarifies requirements for permitted development. This chapter provides detailed guidance for those applying these specific elements of sustainable construction to schemes. The guidance contained here does not in itself promote new development and will therefore not lead to likely significant effects on Habitat Sites.</p>	<p>None</p>	<p>None</p>	<p>No</p>

Chapter	Assessment of potential impact on Habitat sites	Habitat sites that could possibly be affected	Likely significant effect identified	AA needed?
4. Materials	The chapter details some overall principals to be considered in the selection of materials for use in developments and also provides specific advice on the use of the following: concrete, timber, brick, structural steel and glass. This chapter provides detailed guidance for those applying these specific elements of sustainable construction to schemes. The guidance contained here does not in itself promote development and will therefore not lead to likely significant effects on Habitat Sites.			
5. Waste	This chapter provides advice on waste management during construction, and the provision of waste storage facilities for final occupants. This chapter provides detailed guidance for those considering these specific elements of sustainable construction in schemes. The guidance contained here does not in itself promote development and will therefore not lead to likely significant effects on Habitat Sites.	None	None	No
6. Sitting, Form & Orientation	This chapter provides specific guidance on design in relation to sustainable			

Chapter	Assessment of potential impact on Habitat sites	Habitat sites that could possibly be affected	Likely significant effect identified	AA needed?
	construction. The guidance contained here does not in itself promote development and will therefore not lead to likely significant effects on Habitat Sites.			
7. Sustainable energy and construction and the Historic Environment	This chapter provides specific advice on managing potential impacts on heritage assets. This chapter provides detailed guidance for those wishing to apply sustainable construction methods to, or within the vicinity of, heritage assets. The guidance contained here does not in itself promote development and will therefore not lead to likely significant effects on Habitat Sites.	None	None	No
8. Sustainable energy and construction and the Natural Environment	This chapter provides specific advice on managing potential impacts on the natural environment and specifically landscape character. This chapter specifically references ‘European Protected Species’ and the need for applicants to demonstrate that their proposals do not compromise the particular objectives of the designation. The guidance contained here will therefore not	None	None	No

Chapter	Assessment of potential impact on Habitat sites	Habitat sites that could possibly be affected	Likely significant effect identified	AA needed?
	lead to likely significant effects on Habitat Sites.			
9. Renewable and Low Carbon Energy	This chapter clarifies the schemes which are determined but the Council and those that are classified as Nationally Significant Infrastructure Projects. Specific advice is given in relation to community led renewable and low carbon energy schemes. This chapter also provides specific advice in the relation to renewable and local carbon energy technologies such as air source heat pumps, small-scale wind turbines and biomass boilers. This chapter includes clarification around planning permission requirements and building control requirements. It provides detailed guidance for those applying these specific elements of sustainable construction to schemes. The guidance contained here does not in itself promote development and will therefore not lead to likely significant effects on Habitat Sites.	None	None	No
10. Construction Methods and Standards	This chapter provides advice and guidance on the use of sustainable construction	None	None	No

Chapter	Assessment of potential impact on Habitat sites	Habitat sites that could possibly be affected	Likely significant effect identified	AA needed?
	<p>methods. It also provides an explanation of the standards relating to sustainable construction. This chapter provides detailed guidance for those considering these specific elements of sustainable construction in schemes. The guidance contained here does not in itself promote development and will therefore not lead to likely significant effects on Habitat Sites.</p>			
<p>11. Healthy Buildings and Places</p>	<p>This chapter highlights the health benefits of sustainably constructed developments. The guidance contained here does not in itself promote development and will therefore not lead to likely significant effects on Habitat Sites.</p>	<p>None</p>	<p>None</p>	<p>No</p>
<p>12. Making a Planning Application</p>	<p>This chapter provides guidance for those wishing to make a planning application that meets the requirement of the Council’s climate change planning policies. This chapter is focused on the information that should be submitted alongside such an application, it is primarily descriptive and will therefore not lead to likely significant effects on Habitat Sites.</p>	<p>None</p>	<p>None</p>	<p>No</p>

6. Summary and conclusions

- 6.1 The draft Sustainable Construction Supplementary Planning Document (SPD) provides additional guidance to inform the determination of planning applications alongside the Waveney and Suffolk Coastal Local Plans. The draft Sustainable Construction SPD provides further guidance and advice concerning the sustainable design and construction of residential and commercial developments. The guidance contained in the draft SPD will assist in the implementation of Local Plan and Neighbourhood Plan policies for East Suffolk relating to sustainable design and construction. The SPD, when adopted, be a material consideration in the determining of applications for planning permission.
- 6.2 Natural England were consulted on a draft of this Screening Statement as statutory nature conservation body. Their response is contained in Appendix 4.
- 6.3 Implementation of the Sustainable Construction Supplementary Planning Document will not lead to likely significant effects on protected Habitat sites.

Signed: 

Dated: 27/10/2021

Desi Reed
Planning Policy and Delivery Manager
East Suffolk Council

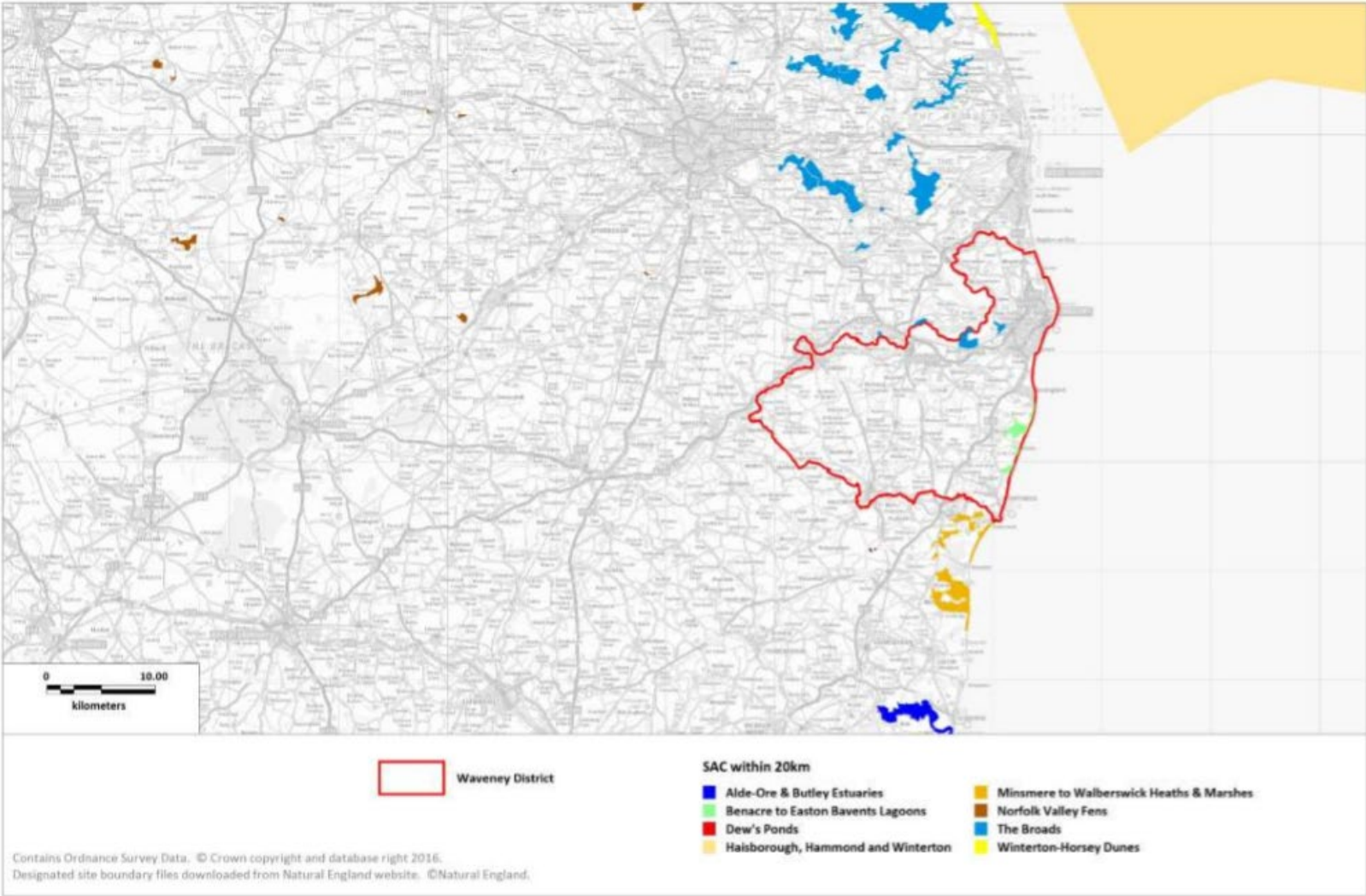
Appendix 1: Sources of background information

- East Suffolk Council – Suffolk Coastal Local Plan (September 2020)
- East Suffolk Council – Waveney Local Plan (March 2019)
- Habitats Regulations Assessment for the Suffolk Coastal Local Plan at Final Draft Plan stage (incorporating Main Modifications) (May 2020)
- The Habitats Regulations Assessment of the Waveney Local Plan (December 2018)
- Habitats Regulations Assessment Recreational Disturbance Avoidance and Mitigation Strategy for Ipswich Borough, Babergh District, Mid Suffolk District and East Suffolk Councils (May 2019)

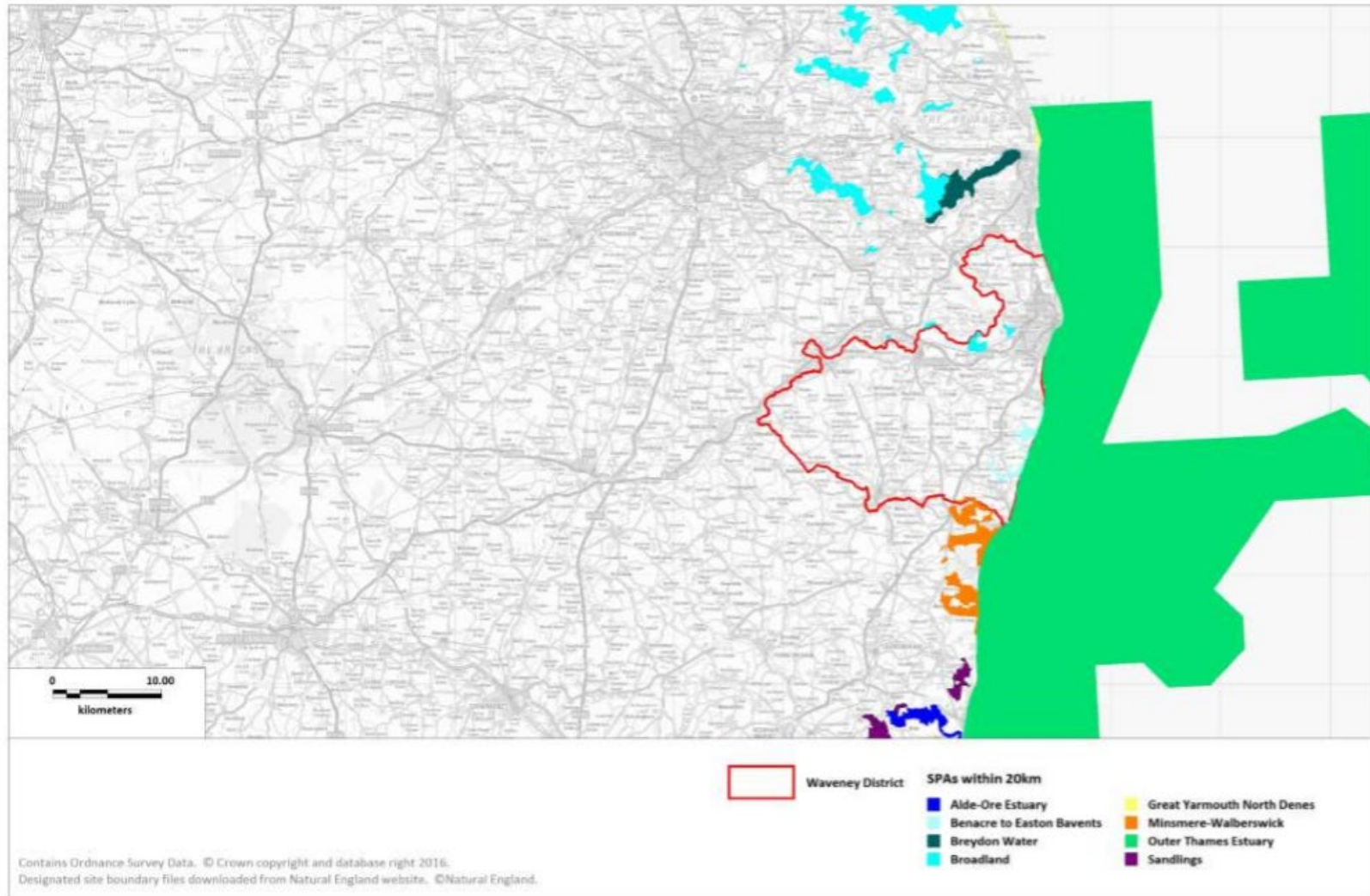
Appendix 2: Locations of Habitat sites

Habitat sites within 20km of the East Suffolk Council-
Waveney Local Plan Area

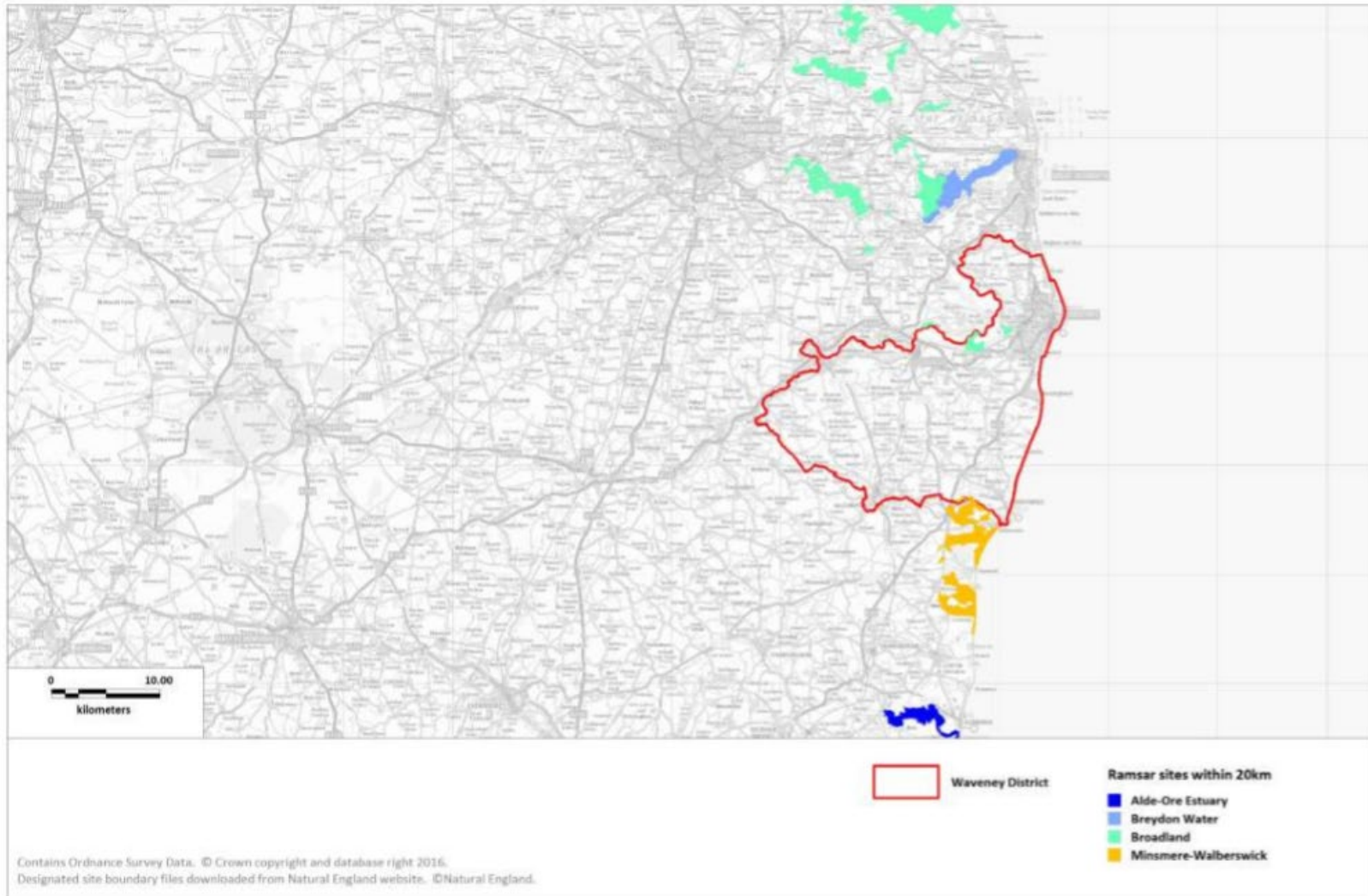
Map 1: SACs



Map 2: SPAs

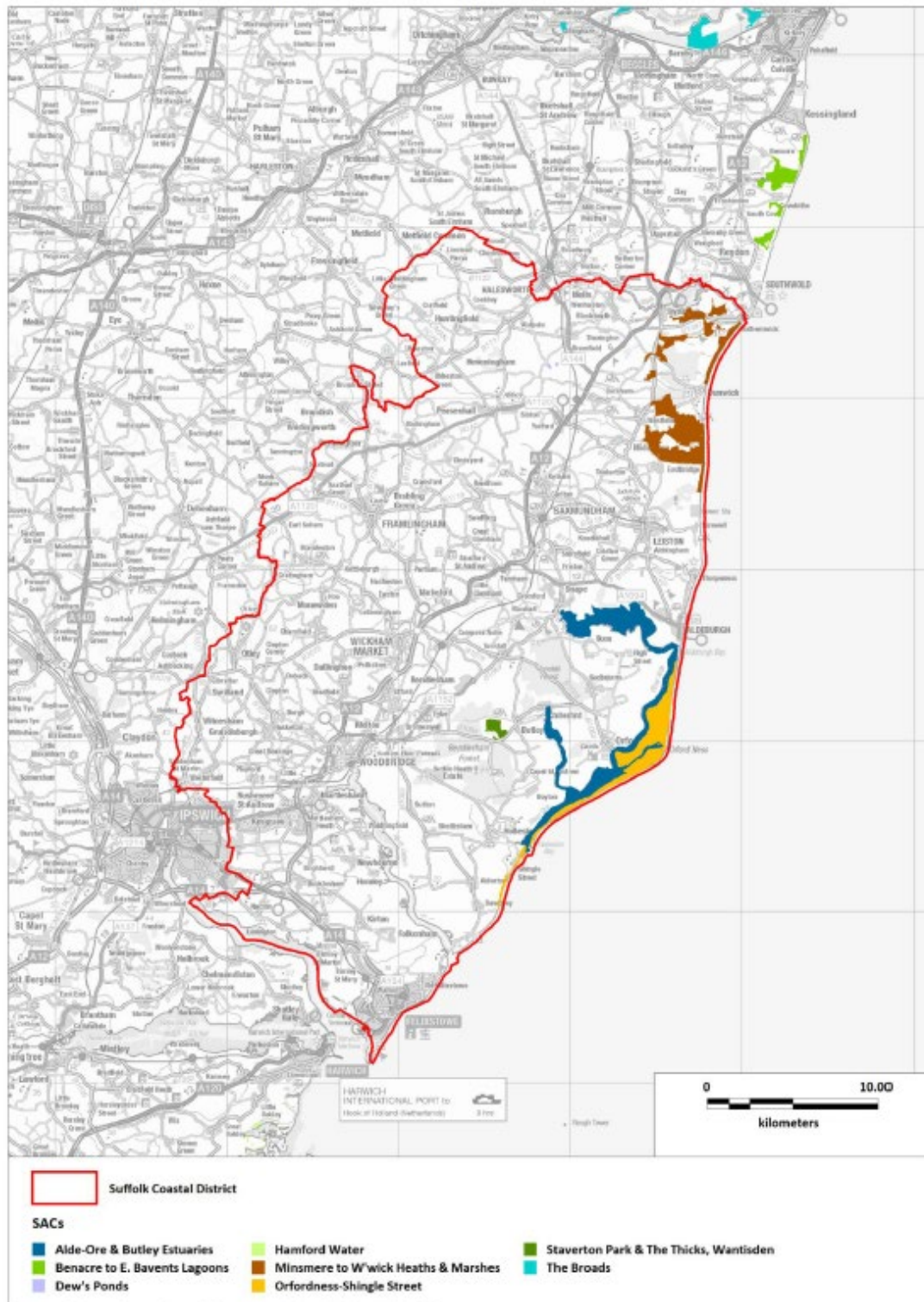


Map 3: Ramsar Sites



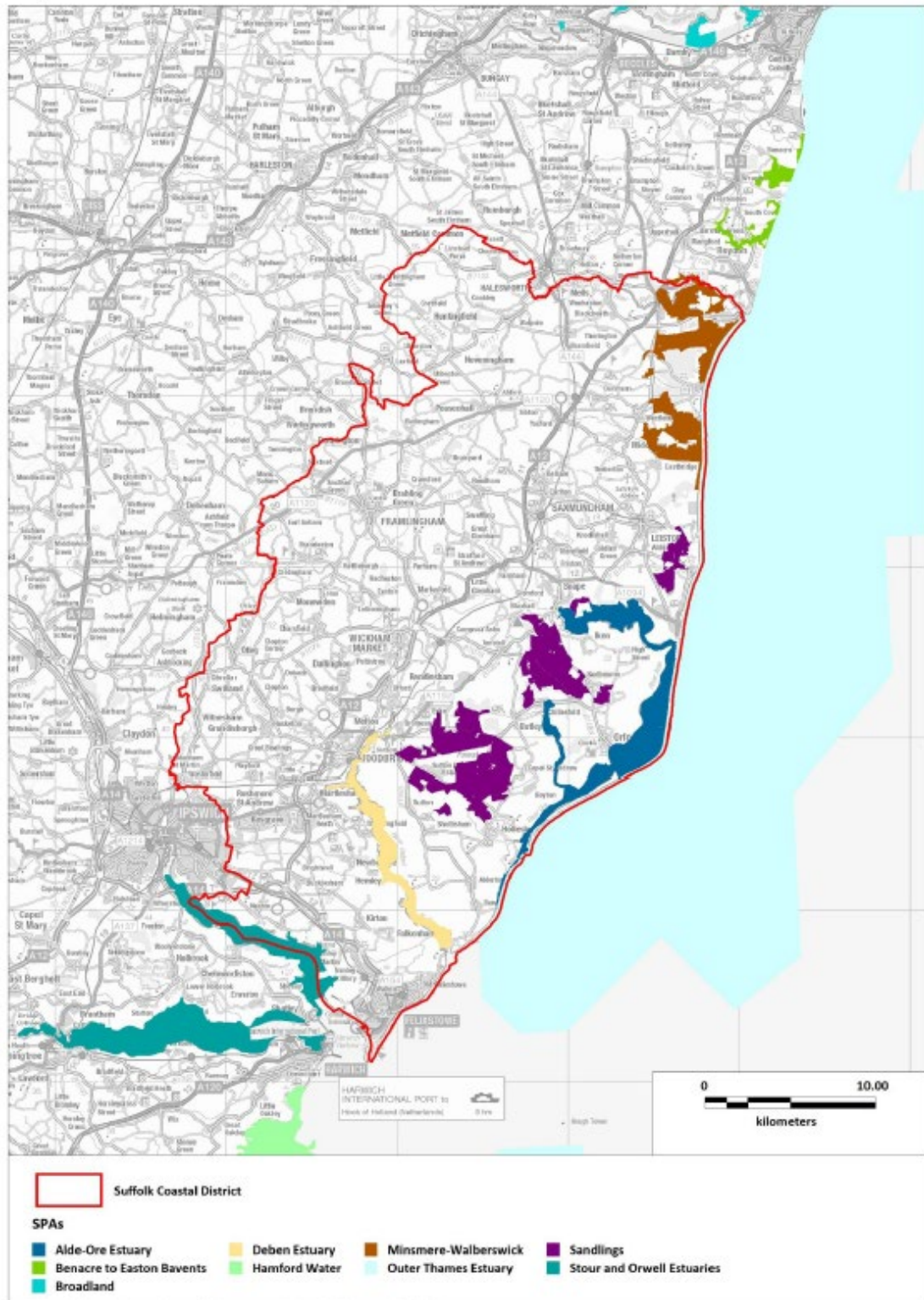
Habitat sites within 20km of the East Suffolk Council- Suffolk Coastal Local Plan Area

Map 1: SAC sites where boundary within 20km of Suffolk Coastal District



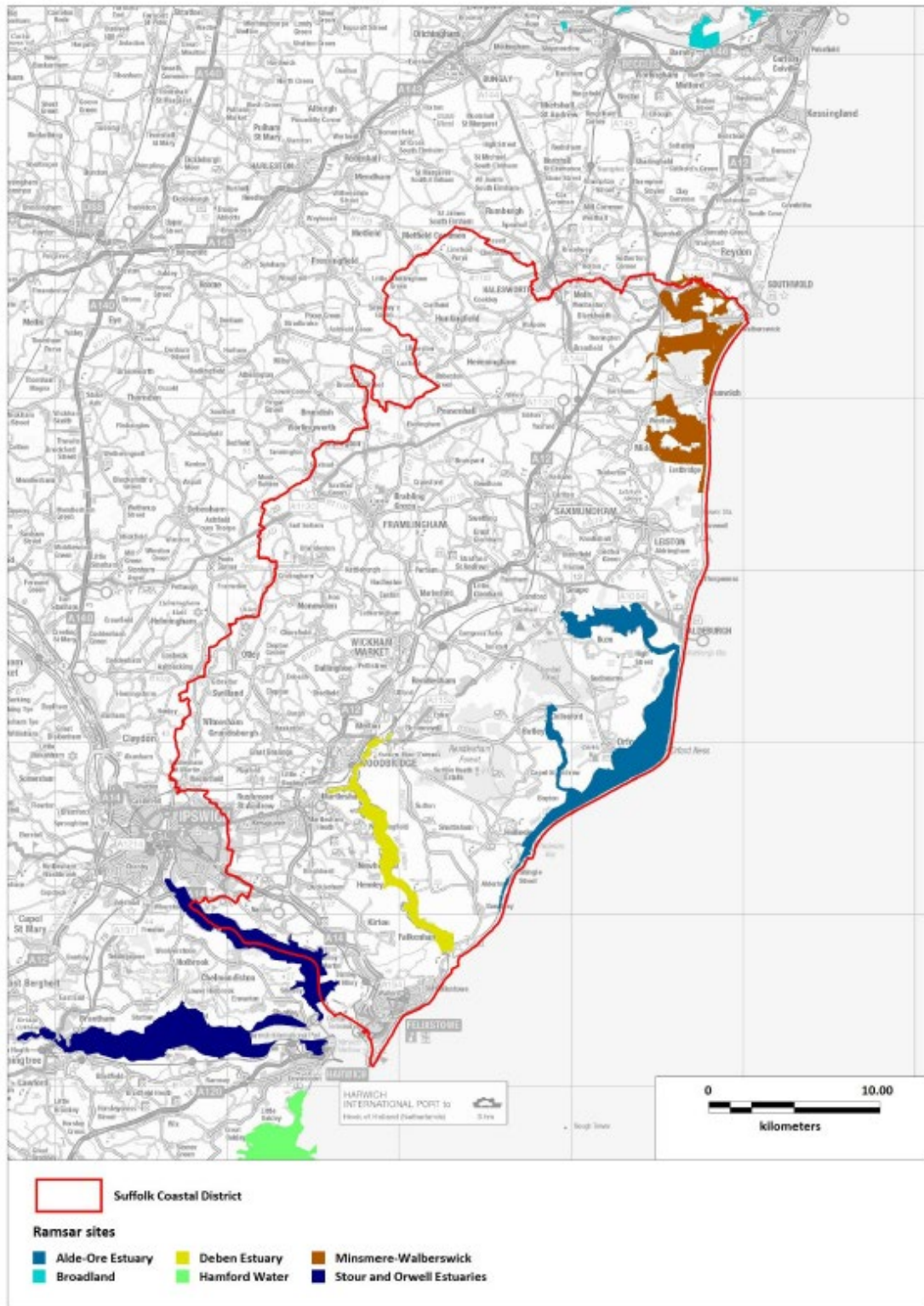
Contains Ordnance Survey Data. © Crown copyright and database right 2017.
 Contains Natural England information © Natural England and Database Right. All rights Reserved.

Map 2: SPA sites where boundary within 20km of Suffolk Coastal District



Contains Ordnance Survey Data. © Crown copyright and database right 2017.
 Contains Natural England Information © Natural England and Database Right. All rights Reserved.

Map 3: Ramsar sites where boundary within 20km of Suffolk Coastal District



Contains Ordnance Survey Data. © Crown copyright and database right 2017.
Contains Natural England Information © Natural England and Database Right. All rights Reserved.

Appendix 3: Relevant Habitat sites

Name	Qualifying features	Conservation Objectives	Pressure and threats (as summarised in the Habitats Regulations Assessment for the Suffolk Coastal Local Plan at Final Draft Plan Stage (December 2018))
Special Areas of Conservation			
Alde-Ore and Butley Estuaries	H1130:Estuaries H1140: Mudflats and sandflats not covered by seawater at low tide; Intertidal mudflats and sandflats H1330: Atlantic salt meadows	Ensure that the integrity of the site is maintained or restored as appropriate, and ensure that the site contributes to achieving the Favourable Conservation Status of its Qualifying Features by maintaining or restoring: The extent and distribution of qualifying natural habitats; The structure and function (including typical species) of qualifying natural habitats; The supporting processes on which qualifying natural habitats rely.	Hydrological changes, public access/disturbance, inappropriate coastal management, coastal squeeze, inappropriate pest control, changes in species distributions, invasive species, air pollution, fisheries (commercial marine and estuarine) (Alde-Ore and Butley Estuaries SAC and Alde-Ore SPA)
Benacre to Easton Barents Lagoons	H1150# Coastal lagoons, A195(B) <i>Sterna albifrons</i> : Little tern A021(B) <i>Botaurus stellaris</i> : Great bittern A081(B) <i>Circus aeruginosus</i> : Eurasian marsh harrier	Ensure that the integrity of the site is maintained or restored as appropriate, and ensure that the site contributes to achieving the Favourable Conservation Status of its Qualifying Features, by maintaining or restoring; The extent and distribution of qualifying natural habitats,	Public access/disturbance, water pollution, physical modification, changes in species distributions, fisheries (marine and estuarine).

		The structure and function (including typical species) of qualifying natural habitats, and, The supporting processes on which qualifying natural habitats rely.	
Dew's Ponds	S1166 Triturus cristatus: Great crested newt	Ensure that the integrity of the site is maintained or restored as appropriate, and ensure that the site contributes to achieving the Favourable Conservation Status of its Qualifying Features, by maintaining or restoring; The extent and distribution of the habitats of qualifying species, The structure and function of the habitats of qualifying species, The supporting processes on which the habitats of qualifying species rely, The populations of qualifying species, and, The distribution of qualifying species within the site.	None identified
Minsmere to Walberswick Heaths and Marshes	H4030 European dry heaths H1210 Annual vegetation of drift lines H1220 Perennial vegetation of stony banks A052(B) Anas crecca: Eurasian teal A021(B) Botaurus stellaris: Great bittern A081(B) Circus aeruginosus: Eurasian marsh harrier	Ensure that the integrity of the site is maintained or restored as appropriate, and ensure that the site contributes to achieving the Favourable Conservation Status of its Qualifying Features, by maintaining or restoring; The extent and distribution of qualifying natural habitats and habitats,	Coastal squeeze, public access/disturbance, changes in species distributions, invasive species, inappropriate pest control, air pollution, water pollution, deer, fisheries (commercial marine and estuarine)

	<p>A082(NB) Circus cyaneus: Hen harrier A224(B) Caprimulgus europaeus: European nightjar A056(B) Anas clypeata: Northern shoveler A056(NB) Anas clypeata: Northern shoveler A051(B) Anas strepera: Gadwall A051(NB) Anas strepera: Gadwall A132(B) Recurvirostra avosetta: Pied avocet A195(B) Sterna albifrons: Little tern A394(NB) Anser albifrons albifrons: Greater white-fronted goose</p>	<p>The structure and function (including typical species) of qualifying natural habitats, and, The supporting processes on which qualifying natural habitats rely.</p>	
<p>Orfordness – Shingle Street</p>	<p>H1150: Coastal Lagoons H1210: Annual vegetation of drift lines H1220: Perennial vegetation of stony banks; Coastal shingle vegetation outside the reach of waves</p>	<p>Ensure that the integrity of the site is maintained or restored as appropriate, and ensure that the site contributes to achieving the Favourable Conservation Status of its Qualifying Features by maintaining or restoring: The extent and distribution of qualifying natural habitats; The structure and function (including typical species) of qualifying natural habitats; and The supporting processes on which qualifying natural habitats rely.</p>	<p>Not identified in Suffolk Coastal Final Draft Local Plan HRA.</p>

<p>Staverton Park and The Thicks, Wantisden</p>	<p>H9190: Old acidophilous oak woods with <i>Quercus robur</i> on sandy plains; Dry oak-dominated woodland.</p>	<p>Ensure that the integrity of the site is maintained or restored as appropriate, and ensure that the site contributes to achieving the Favourable Conservation Status of its Qualifying Features by maintaining or restoring: The extent and distribution of qualifying natural habitats; The structure and function (including typical species) of qualifying natural habitats; and The supporting processes on which qualifying natural habitats rely.</p>	<p>Woodland management, disease, atmospheric pollution.</p>
<p>The Broads</p>	<p>H7210# Calcareous fens with <i>Cladium mariscus</i> and species of the <i>Caricion davallianae</i> S1016 <i>Vertigo moulinsiana</i>: Desmoulin's whorl snail H7230 Alkaline fens H6410 <i>Molinia</i> meadows on calcareous, peaty or clayey-silt-laden soils (<i>Molinion caeruleae</i>) H91E0# Alluvial forests with <i>Alnus glutinosa</i> and <i>Fraxinus excelsior</i> (<i>Alno-Padion</i>, <i>Alnion incanae</i>, <i>Salicion albae</i>) H7140 Transition mires and quaking bogs</p>	<p>Ensure that the integrity of the site is maintained or restored as appropriate, and ensure that the site contributes to achieving the Favourable Conservation Status of its Qualifying Features, by maintaining or restoring; The extent and distribution of qualifying natural habitats and habitats of qualifying species, The structure and function (including typical species) of qualifying natural habitats, The structure and function of the habitats of qualifying species, The supporting processes on which qualifying natural habitats and the habitats of qualifying species rely,</p>	<p>Water pollution, climate change, invasive species, siltation, inappropriate water levels, hydrological changes, water abstraction, change in land management, inappropriate ditch management, inappropriate scrub control, changes in species distributions, public access/disturbance, undergrazing, drainage, direct impact from 3rd party</p>

	<p>H3140 Hard oligo-mesotrophic waters with benthic vegetation of Chara spp</p> <p>H3150 Natural eutrophic lakes with Magnopotamion or Hydrocharition-type vegetation</p> <p>S1355 Lutra lutra: Otter</p> <p>S1903 Liparis loeselii: Fen orchid</p> <p>S4056 Anisus vorticulus: Little ramshorn whirlpool snail</p>	<p>The populations of qualifying species, and, The distribution of qualifying species within the site.</p>	
Special Protection Areas			
<p>Alde-Ore Estuary (also Ramsar site)</p>	<p>A081: Eurasian marsh harrier (breeding)</p> <p>A132: Pied avocet (non-breeding)</p> <p>A132: Pied avocet (breeding)</p> <p>A151: Ruff (non-breeding)</p> <p>A162: Common redshank (non-breeding)</p> <p>A183: Lesser black-backed gull (breeding)</p> <p>A191: Sandwich tern (breeding)</p> <p>A195: Little tern (breeding)</p>	<p>Ensure that the integrity of the site is maintained or restored as appropriate, and ensure that the site contributes to achieving the aims of the Wild Birds Directive, by maintaining or restoring:</p> <p>The extent and distribution of the habitats of the qualifying features;</p> <p>The structure and function of the habitats of the qualifying features;</p> <p>The supporting processes on which the habitats of the qualifying features rely;</p> <p>The population of each of the qualifying features; and</p> <p>The distribution of the qualifying features within the site.</p>	<p>Hydrological changes, public access/disturbance, inappropriate coastal management, coastal squeeze, inappropriate pest control, changes in species distributions, invasive species, air pollution, fisheries (commercial marine and estuarine)</p> <p>(Alde-Ore and Butley Estuaries SAC and Alde-Ore SPA)</p>
<p>Benacre to Easton Bvents</p>	<p>H1150# Coastal lagoons, A195(B) Sterna albifrons: Little tern</p>	<p>Ensure that the integrity of the site is maintained or restored as appropriate, and ensure that the site contributes to</p>	<p>Public access/disturbance, water pollution, physical modification, changes</p>

	<p>A021(B) <i>Botaurus stellaris</i>: Great bittern A081(B) <i>Circus aeruginosus</i>: Eurasian marsh harrier</p>	<p>achieving the aims of the Wild Birds Directive, by maintaining or restoring; The extent and distribution of the habitats of the qualifying features, The structure and function of the habitats of the qualifying features, The supporting processes on which the habitats of the qualifying features rely, The population of each of the qualifying features, and, The distribution of the qualifying features within the site.</p>	<p>in species distributions, fisheries (marine and estuarine).</p>
<p>Broadlands (also Ramsar site)</p>	<p>H7210# Calcareous fens with <i>Cladium mariscus</i> and species of the <i>Caricion davallianae</i> S1016 <i>Vertigo moulinsiana</i>: Desmoulin's whorl snail H7230 Alkaline fens H6410 <i>Molinia</i> meadows on calcareous, peaty or clayey-silt-laden soils (<i>Molinion caeruleae</i>) H91E0# Alluvial forests with <i>Alnus glutinosa</i> and <i>Fraxinus excelsior</i> (<i>Alno-Padion</i>, <i>Alnion incanae</i>, <i>Salicion albae</i>) H7140 Transition mires and quaking bogs H3140 Hard oligo-mesotrophic waters with benthic vegetation of <i>Chara</i> spp</p>	<p>Ensure that the integrity of the site is maintained or restored as appropriate, and ensure that the site contributes to achieving the Favourable Conservation Status of its Qualifying Features, by maintaining or restoring; The extent and distribution of qualifying natural habitats and habitats of qualifying species, The structure and function (including typical species) of qualifying natural habitats, The structure and function of the habitats of qualifying species, The supporting processes on which qualifying natural habitats and the habitats of qualifying species rely, The populations of qualifying species, and,</p>	<p>Water pollution, climate change, invasive species, siltation, inappropriate water levels, hydrological changes, water abstraction, change in land management, inappropriate ditch management, inappropriate scrub control, changes in species distributions, public access/disturbance, undergrazing, drainage, direct impact from 3rd party</p>

	H3150 Natural eutrophic lakes with Magnopotamion or Hydrocharition-type vegetation S1355 Lutra lutra: Otter S1903 Liparis loeselii: Fen orchid S4056 Anisus vorticulus: Little ramshorn whirlpool snail	The distribution of qualifying species within the site.	
Deben Estuary (also Ramsar site)	A046a: Dark bellied brent goose (non-breeding) A132: Pied avocet (non-breeding)	Ensure that the integrity of the site is maintained or restored as appropriate, and ensure that the site contributes to achieving the aims of the Wild Birds Directive, by maintaining or restoring: The extent and distribution of the habitats of the qualifying features; The structure and function of the habitats of the qualifying features; The supporting processes on which the habitats of the qualifying features rely; The population of each of the qualifying features; and The distribution of the qualifying features within the site.	Coastal squeeze, disturbance to birds, water and air pollution.
Outer Thames Estuary	A001: Red-throated Diver (Non-breeding) A195: Common Tern (Breeding) A193: Little Tern (Breeding)	Ensure that the integrity of the site is maintained or restored as appropriate, and ensure that the site contributes to achieving the aims of the Wild Birds Directive, by maintaining or restoring: The extent and distribution of the habitats of the qualifying features;	Not identified in Suffolk Coastal Final Draft Local Plan HRA. SIP identifies fisheries.

		<p>The structure and function of the habitats of the qualifying features; The supporting processes on which the habitats of the qualifying features rely; The population of each of the qualifying features; and The distribution of the qualifying features within the site.</p>	
<p>Minsmere to Walberswick (also Ramsar site)</p>	<p>H4030 European dry heaths H1210 Annual vegetation of drift lines H1220 Perennial vegetation of stony banks A052(B) <i>Anas crecca</i>: Eurasian teal A021(B) <i>Botaurus stellaris</i>: Great bittern A081(B) <i>Circus aeruginosus</i>: Eurasian marsh harrier A082(NB) <i>Circus cyaneus</i>: Hen harrier A224(B) <i>Caprimulgus europaeus</i>: European nightjar A056(B) <i>Anas clypeata</i>: Northern shoveler A056(NB) <i>Anas clypeata</i>: Northern shoveler A051(B) <i>Anas strepera</i>: Gadwall A051(NB) <i>Anas strepera</i>: Gadwall</p>	<p>Ensure that the integrity of the site is maintained or restored as appropriate, and ensure that the site contributes to achieving the aims of the Wild Birds Directive, by maintaining or restoring; The extent and distribution of the habitats of the qualifying features, The structure and function of the habitats of the qualifying features, The supporting processes on which the habitats of the qualifying features rely, The population of each of the qualifying features, and, The distribution of the qualifying features within the site.</p>	<p>Coastal squeeze, public access/disturbance, changes in species distributions, invasive species, inappropriate pest control, air pollution, water pollution, deer, fisheries (commercial marine and estuarine)</p>

	<p>A132(B) <i>Recurvirostra avosetta</i>: Pied avocet A195(B) <i>Sterna albifrons</i>: Little tern A394(NB) <i>Anser albifrons albifrons</i>: Greater white-fronted goose</p>		
Outer Thames Estuary	<p>A001 (W) <i>Gavia stellata</i> Red-throated Diver A195 (B) <i>Sterna hirundo</i> Common Tern A193 (B) <i>Sternula albifrons</i> Little Tern</p>	<p>Ensure that the integrity of the site is maintained or restored as appropriate, and ensure that the site contributes to achieving the aims of the Wild Birds Directive, by maintaining or restoring; The extent and distribution of the habitats of the qualifying features, The structure and function of the habitats of the qualifying features, The supporting processes on which the habitats of the qualifying features rely, The population of each of the qualifying features, and, The distribution of the qualifying features within the site.</p>	<p>Not identified in Suffolk Coastal Final Draft Local Plan HRA. SIP identifies fisheries.</p>
Sandlings	<p>A224: European nightjar (breeding) A246: Woodlark (breeding)</p>	<p>Ensure that the integrity of the site is maintained or restored as appropriate, and ensure that the site contributes to achieving the aims of the Wild Birds Directive, by maintaining or restoring: The extent and distribution of the habitats of the qualifying features;</p>	<p>Changes in species distributions, inappropriate scrub control, deer, air pollution, public access/disturbance.</p>

		<p>The structure and function of the habitats of the qualifying features;</p> <p>The supporting processes on which the habitats of the qualifying features rely;</p> <p>The population of each of the qualifying features; and</p> <p>The distribution of the qualifying features within the site.</p>	
<p>Stour and Orwell Estuaries (also Ramsar site)</p>	<p>A046a: Dark bellied brent goose (non-breeding)</p> <p>A054: Northern pintail (non-breeding)</p> <p>A132: Pied avocet (non-breeding)</p> <p>A141: Grey plover (non-breeding)</p> <p>A143: Red knot (non-breeding)</p> <p>A149: Dunlin (non-breeding)</p> <p>A156: Black-tailed godwit (non-breeding)</p> <p>A162: Common redshank (non-breeding)</p> <p>Waterbird assemblage</p>	<p>Ensure that the integrity of the site is maintained or restored as appropriate, and ensure that the site contributes to achieving the aims of the Wild Birds Directive, by maintaining or restoring:</p> <p>The extent and distribution of the habitats of the qualifying features;</p> <p>The structure and function of the habitats of the qualifying features;</p> <p>The supporting processes on which the habitats of the qualifying features rely;</p> <p>The population of each of the qualifying features; and</p> <p>The distribution of the qualifying features within the site.</p>	<p>Coastal squeeze, disturbance to birds, air pollution and new development.</p>

Appendix 4: Natural England Consultation Response

Date: 26 October 2021
Our ref: 368549
Your ref:



Andrea.McMillan@eastsoffolk.gov.uk
BY EMAIL ONLY

Hornbeam House
Crewe Business Park
Electra Way
Crewe
Cheshire
CW1 6GJ

T 0300 060 3900

Dear Andrea McMillan,

Planning Consultation: Strategic Environmental Assessment (SEA) and Habitats Regulation Assessment (HRA) screening opinion for the draft Sustainable Construction Supplementary Planning Document (SPD)

Thank you for your consultation on the above dated 21 September 2021 which was received by Natural England on the same date.

Natural England is a non-departmental public body. Our statutory purpose is to ensure that the natural environment is conserved, enhanced, and managed for the benefit of present and future generations, thereby contributing to sustainable development.

We would like to state our support for the SPD which will positively contribute to Suffolk's admirable target of carbon neutrality by 2030, as lead by East Suffolk Council, Suffolk County Council, and their partners.

Screening Opinion Request: Strategic Environmental Assessment and Habitats Regulation Assessment

Habitats Regulations Assessment

Natural England notes that your authority, as competent authority under the provisions of the Habitats Regulations, has screened the proposal to check for the likelihood of significant effects.

Your assessment concludes that the proposal can be screened out from further stages of assessment because significant effects are unlikely to occur, either alone or in combination. On the basis of the information provided, Natural England concurs with this view.

Strategic Environmental Assessment

Your assessment concludes that the proposal can be screened out from further stages of assessment because significant effects on the environment as a result of the proposal are unlikely to occur. On the basis of the information provided, Natural England concurs with this view.

If you have any queries relating to the advice in this letter please contact me on [REDACTED]

Yours faithfully

Sam Kench
Norfolk and Suffolk Team