

## MATERIALS SCHEDULE 1



### EASTON

**WALLS**  
Buff facing brick  
with red brick details

**ROOF**  
Clay plain tiles

**LINTELS**  
Red brick

**CILLS**  
Reconstituted stone ~ buff

**STRING COURSE**  
Reconstituted stone ~ buff

**RAIN WATER GOODS**  
Brown UPVC

**DOORS**  
Timber painted

**PLINTH**  
Red facing brick

**WINDOWS & JOINERY**  
Timber painted off white



### WOODBIDGE

**WALLS**  
Buff or red facing brick  
with red/buff brick details

**ROOF**  
Clay pantiles

**LINTELS**  
Reconstituted stone ~ buff

**CILLS**  
Reconstituted stone ~ buff

**STRING COURSE**  
Reconstituted stone ~ buff

**RAIN WATER GOODS**  
White UPVC

**DOORS**  
Timber painted

**PLINTH**  
Red facing brick

**WINDOWS & JOINERY**  
Timber painted off white



### FRAMLINGHAM

**WALLS**  
Red/buff facing brick  
or red multi

**GABLE WALLS**  
Render ~ various colours

**ROOF**  
Clay pantiles

**LINTELS**  
Red/buff brick

**CILLS**  
Red/buff brick

**STRING COURSE**  
Red/buff brick

**RAIN WATER GOODS**  
Brown UPVC

**DOORS**  
Timber painted

**PLINTH**  
Red facing brick

**WINDOWS & JOINERY**  
Timber painted off white



### GLEMHAM

**SOUTH, NORTH & WEST WALLS**  
Buff or red facing brick  
with red/buff details

**EAST WALLS**  
Render ~ various colours

**ROOF**  
Clay pantiles

**LINTELS**  
Reconstituted stone ~ buff

**CILLS**  
Reconstituted stone ~ buff

**STRING COURSE**  
Reconstituted stone ~ buff

**RAIN WATER GOODS**  
Brown UPVC

**DOORS**  
Timber painted

**PLINTH**  
Red facing brick

**WINDOWS & JOINERY**  
Timber painted off white

**PARGETTING**  
To match render colour



**CAPITAL  
COMMUNITY  
DEVELOPMENTS LTD**  
30 Gardemia Close, Rendlesham, Suffolk IP22 2GX  
T: 01394 420936 • E: enquiries@ccdevelopments.co.uk

Issued for:  
**PLANNING**

Project:  
**GARDEN VILLAGE**

Drawing title:  
**EXTERNAL MATERIALS  
Houses**

DRAWING  
David Williams

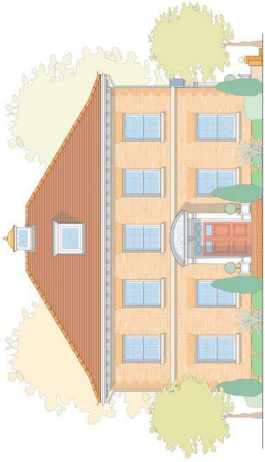
DRAWING No.:  
**M / EXT/1**

REVISION:  
**02**

SCALE:  
**8.4.2019**

© Capital Community Developments Ltd 2018  
© David Williams 2018y  
© Natural Building Design 2019  
All Rights Reserved

## MATERIALS SCHEDULE 2



### WILBY

- WALLS**  
Buff brick  
with buff/red brick details
- ROOF**  
Clay plain tiles
- LINTELS**  
Red/Buff Brick
- CILLS**  
Reconstituted stone ~ buff
- STRING COURSES**  
Reconstituted stone ~ buff
- RAIN WATER GOODS**  
White UPVC
- DOORS**  
Timber painted
- PLINTH**  
Red facing brick
- WINDOWS & JOINERY**  
Timber painted off white



### SUDBURY

- MAIN WALLS**  
Render ~ off white/cream
- ROOF**  
Clay plain Tiles
- LINTELS & QUOINS**  
Reconstituted stone ~ buff
- CILLS**  
Reconstituted stone ~ buff
- STRING COURSE**  
Reconstituted stone ~ buff
- RAIN WATER GOODS**  
White UPVC
- DOORS**  
Timber painted
- PLINTH**  
Red facing brick
- WINDOWS & JOINERY**  
Timber painted off white



### BEALINGS

- WALLS**  
Render~ off-white/cream  
or buff facing brick
- ROOF**  
Clay plain tiles
- LINTELS**  
Reconstituted stone ~ buff
- CILLS**  
Reconstituted stone ~ buff
- STRING COURSE**  
Reconstituted stone ~ buff
- RAIN WATER GOODS**  
White UPVC
- DOORS**  
Timber painted
- PLINTH**  
Red facing brick
- WINDOWS & JOINERY**  
Timber painted off white



**CAPITAL  
COMMUNITY  
DEVELOPMENTS LTD**  
30 Gardenia Close, Rendlesham, Suffolk IP22 2GX  
T: 01394 420930 • E: enquiries@ccdevelopments.co.uk

Issued for:  
**PLANNING**

Project:  
**GARDEN VILLAGE**

Drawing title:  
**EXTERNAL MATERIALS  
Apartments**

DRAWING  
David Williams

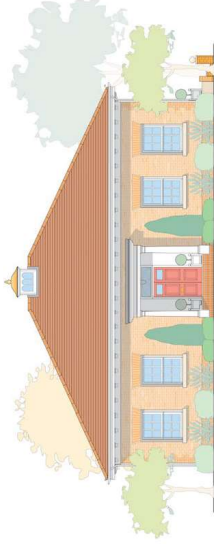
DRAWING No.:  
**M / EXT/2**

REVISION:  
**02**

SCALE:  
**8.4.2019**

© Capital Community Developments Ltd 2018  
© David Williams 2018y  
© Natural Building Design 2019  
All Rights Reserved

## MATERIALS SCHEDULE 3



### DEBEN

**WALLS**  
Red brick  
with Red brick details

**ROOF**  
Clay plain tiles

**LINTELS**  
Red Brick

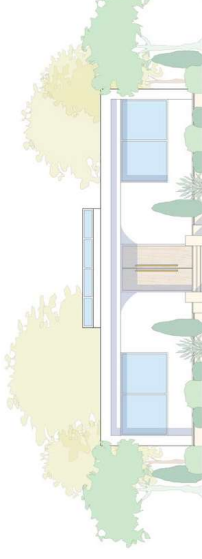
**CILLS**  
Reconstituted stone ~ buff

**RAIN WATER GOODS**  
White UPVC

**DOORS**  
Timber painted

**PLINTH**  
Red facing brick

**WINDOWS & JOINERY**  
Timber painted off white



### BRAMFIELD

**WALLS**  
Render ~ white

**SKYLIGHT**  
Timber painted white

**ROOF**  
Wildflower/Grass & Beach Stones

**DOORS**  
Limed White Oak

**PLINTH**  
Reconstituted Portland Stone

**WINDOWS & JOINERY**  
Timber painted off white



**CAPITAL  
COMMUNITY  
DEVELOPMENTS LTD**

30 Gardenia Close, Rendlesham, Suffolk IP22 2GX  
T: 01394 420930 • E: enquiries@ccdevelopments.co.uk

Issued for:  
**PLANNING**

Project:  
**GARDEN VILLAGE**

Drawing title:  
**EXTERNAL MATERIALS**  
Bungalows

DRAWING  
David Williams

DRAWING No.:  
**M / EXT/3**

REVISION:  
**02**

SCALE:

DATE:  
**8.4.2019**

© Capital Community Developments Ltd 2018  
© David Williams 2018y  
© Natural Building Design 2019  
All Rights Reserved

## MATERIALS SCHEDULE 4



### OUTLINE SPECIFICATION FOR HARD LANDSCAPING

#### HARD SURFACES

##### ROADS 5-5m WIDE

SUDS compliant asphalt with half-battered kerbs

##### SHARED SPACE 4.1m WIDE

SUDS compliant clay stock pavers with low-profile bullnose kerbs

##### PATHS & CYCLEWAYS

Porous asphalt with rolled-in gravel surface

##### RESIDENTS PARKING PLACES & DRIVEWAYS

Permeable cellular matrix pavers with gravel / flat-topped path edgings

##### VISITOR DRIVEWAYS / PTW

Porous asphalt with rolled-in gravel surface

##### PLAY AREA

Permeable cellular matrix pavers with gravel / flat-topped path edgings

##### VISITOR PARKING PLACES & VERGE

Permeable cellular matrix pavers with grass

#### FENCING

##### REAR GARDEN BOUNDARIES

Tanalised close-boarded panels with timber posts

##### FRONT GARDEN BOUNDARIES

Tanalised or painted picket or wood panels with timber posts / powder-coated galvanised metal fencing & posts / brick gate piers

##### PERIMETER BOUNDARY WITH WOODLAND

Lightweight woven mesh netting



**CAPITAL  
COMMUNITY  
DEVELOPMENTS LTD**

30 Gardenia Close, Rendlesham, Suffolk IP22 4GX  
T: 01394 420930 • E: enquiries@ccdevelopments.co.uk

Issued for:  
**PLANNING**

Project:  
**GARDEN VILLAGE**

Drawing title:  
**EXTERNAL MATERIALS  
Hard Landscaping**

DRAWING  
David Williams

DRAWING No.:  
**M / EXT/4**

REVISION:  
**02**

SCALE:  
**8.4.2019**

© Capital Community Developments Ltd 2018  
© David Williams 2018y  
© Natural Building Design 2019  
All Rights Reserved