

Joint Local Authority Group (JLAG)

Sizewell C Stage 3 Consultation: Town and Parish Council Event

22 January 2019

High Lodge, Darsham



WELCOME

Cllr Geoff Holdcroft ,
SCDC

Chairman, JLAG



Programme

- Presentation by Suffolk Coastal District Council and Suffolk County Council, opportunity for Q & A.
- Short break.
- Workshop discussions at tables.
- Feedback.
- Summary.
- Next steps.
- Close and lunch.



Sizewell C Stage 3

Philip Ridley, Head of Planning & Coastal
Management, SCDC and WDC

Bryn Griffiths, Assistant Director
Infrastructure & Waste, SCC



Joint response at Stage 2

- Continue to support the principle of a new nuclear power station at Sizewell C, recognising the significant benefit that such a development would bring to Suffolk;
- However, not yet able to fully support the specific proposals proposed at Stage 2 by EDF Energy as impacts not yet fully developed or evidenced.



Stage 3 Public Consultation – Areas of Change

MAIN DEVELOPMENT SITE PROPOSALS

- Grid connection proposals;
- Design;
- SSSI Causeway;
- Beach Landing Facility;
- Sea defences;
- Northern Mound;
- Goose Hill proposals;
- Sizewell B Relocated Facilities;
- Spoil management;
- Upper Abbey Farm;
- Accommodation campus; and
- Land east of Eastlands Industrial Estate.



Grid Connection Proposals

View looking south-west from Sizewell Beach, East of Goose Hill



EDF Energy Vol. 1 p.174



Grid Connection Proposals

View looking south-east from Sandlings Walk at Goose Hill



EDF Energy Vol. 1 p.174



Grid Connection Proposals

View looking north-east from junction of footpaths at The Walk



EDF Energy Vol. 1 p.174



Grid Connection Proposals

View looking south from National Trust Dunwich Coastguard Cottages car park



EDF Energy Vol. 1 p.175



Design

Turbine Hall, lighter colour



EDF Energy Vol. 1 p.171



Design

Turbine Hall, grey/silver colour



EDF Energy Vol. 1 p.171



Design

Operational service centre, illustrative view



EDF Energy Vol. 1 p.172

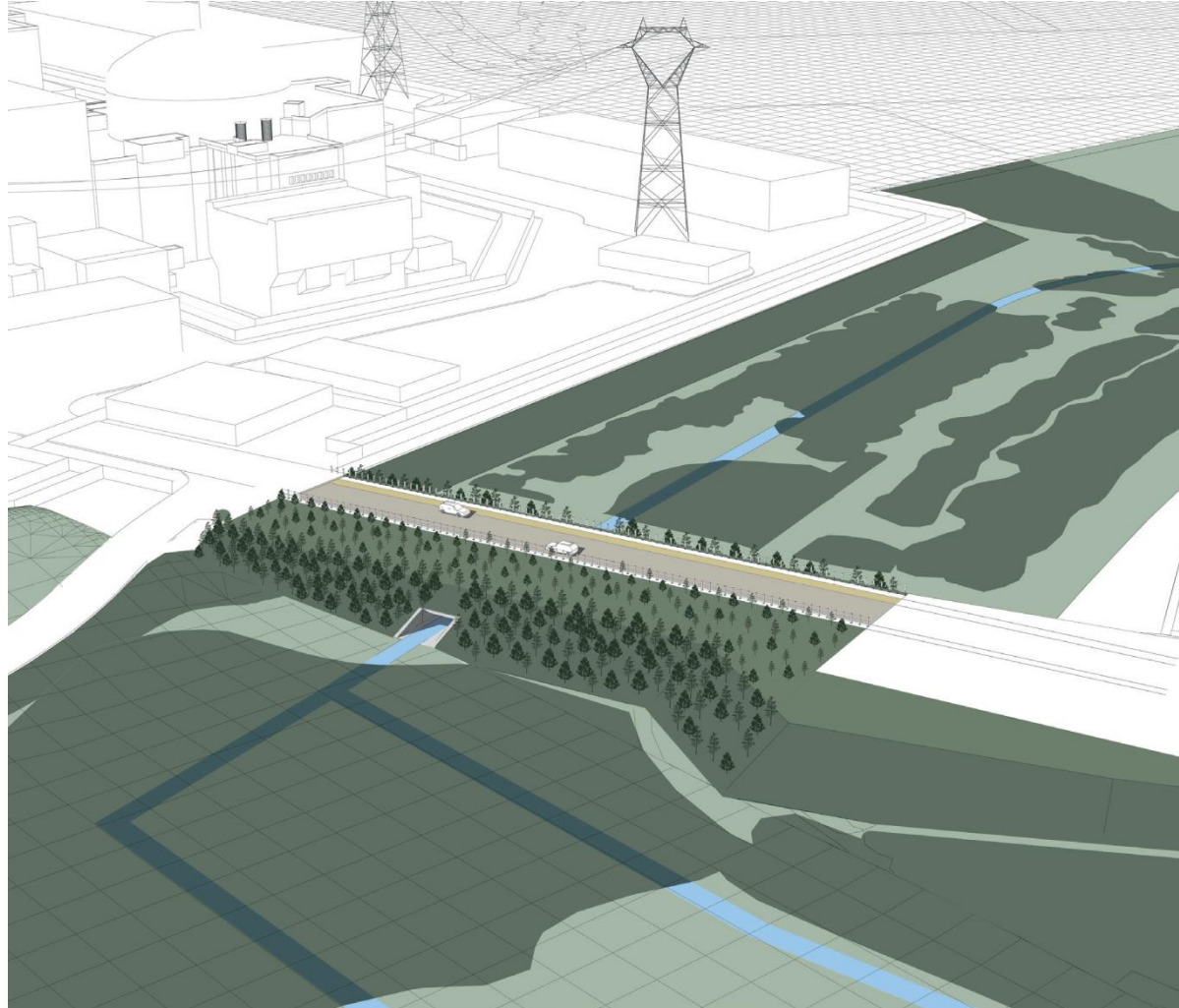


SSSI Causeway (Construction)



EDF Energy Vol. 1 p.211

SSSI Causeway (Operation)



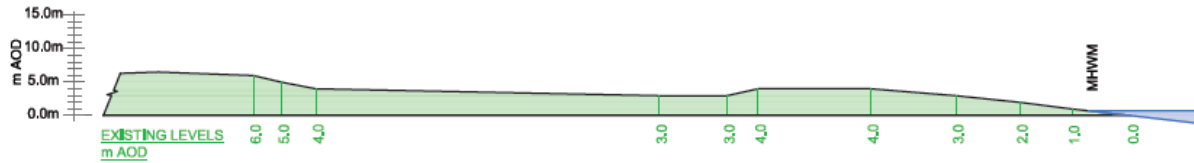
EDF Energy Vol. 1 p.183

Beach Landing Facility (example of)

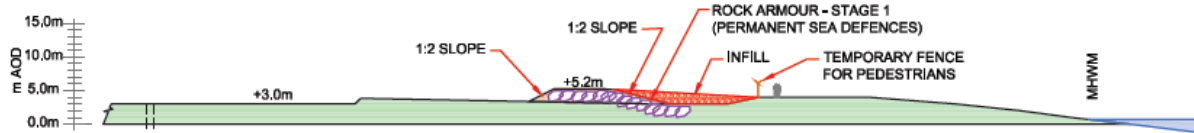


EDF Energy Vol. 1 p.228

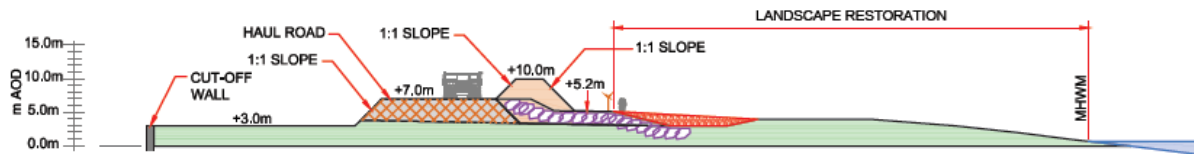
Sea Defences



EXISTING SITE - PRIOR TO START OF CONSTRUCTION



CONSTRUCTION SITE -
DURING CONSTRUCTION OF INITIAL SEA DEFENCE & BLF



CONSTRUCTION SITE -
DURING CONSTRUCTION OF MAIN DEVELOPMENT SITE

EDF Energy Vol. 1 p.226

Northern Mound

Existing and proposed view looking south-west from Sizewell beach east of Goose Hill



Goose Hill



EDF Energy Vol. 1 p.181



Goose Hill

Training building, illustrative view



EDF Energy Vol. 1 p.182



Sizewell B Relocated Facilities



- New outage car park
- Temporary visitor centre
- New visitor centre
- Training centre
- Laydown area
- Operational car parking

EDF Energy Vol. 1 p.176

Sizewell B Relocated Facilities

Coronation Wood, illustrative



EDF Energy Vol. 1 p.177

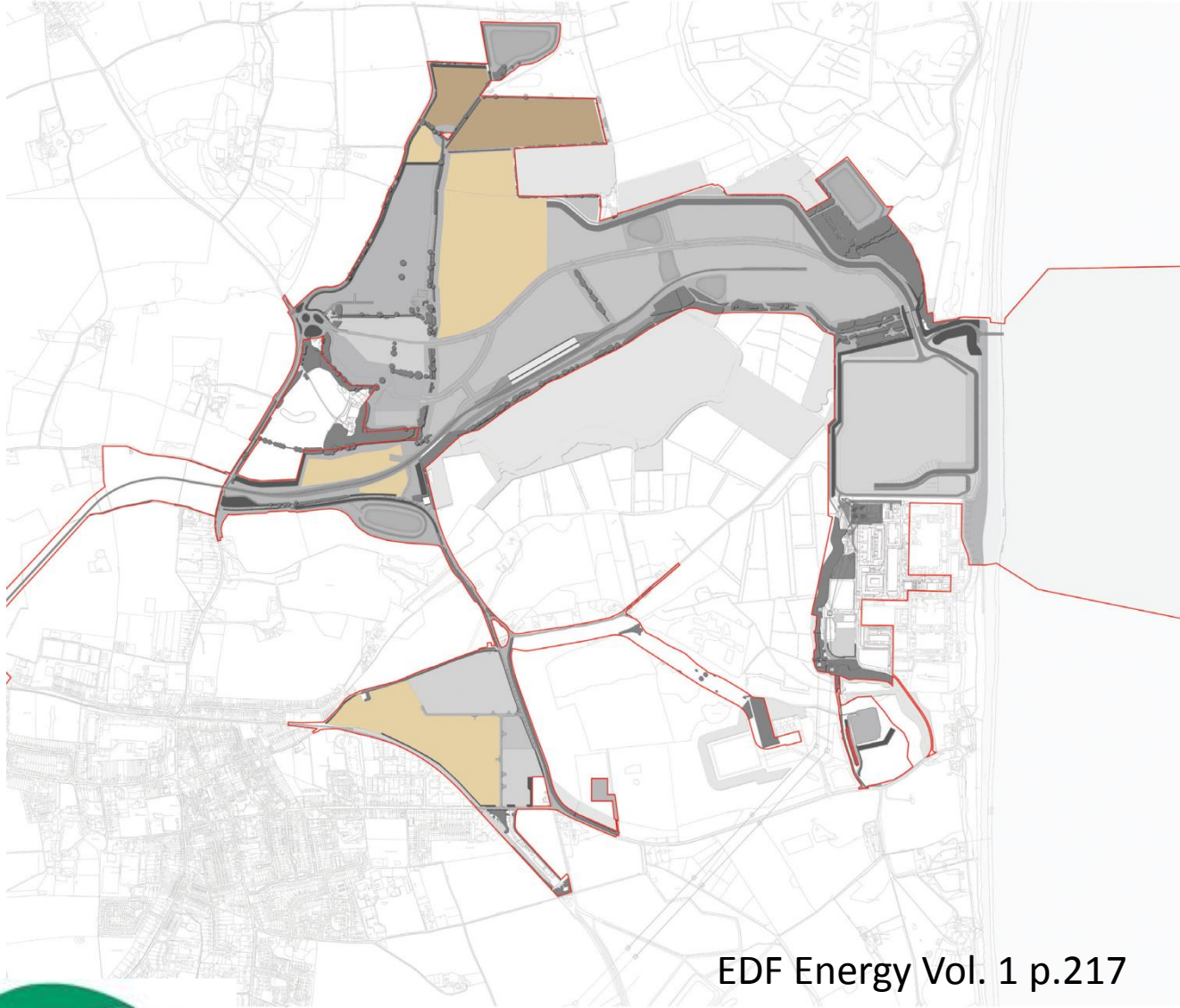
Sizewell B Relocated Facilities

Pill Box Field, illustrative



EDF Energy Vol. 1 p.177

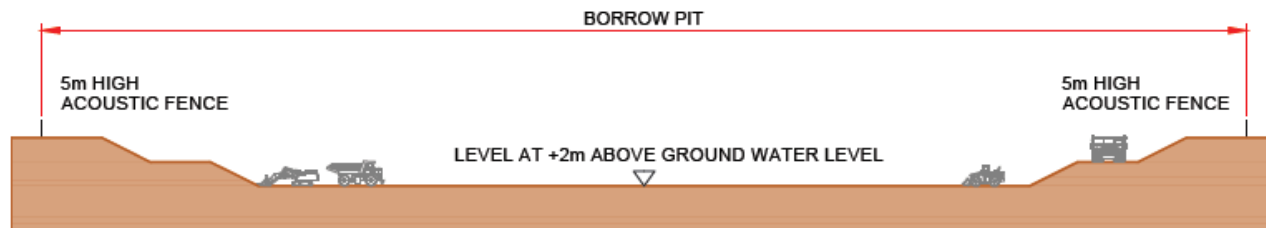
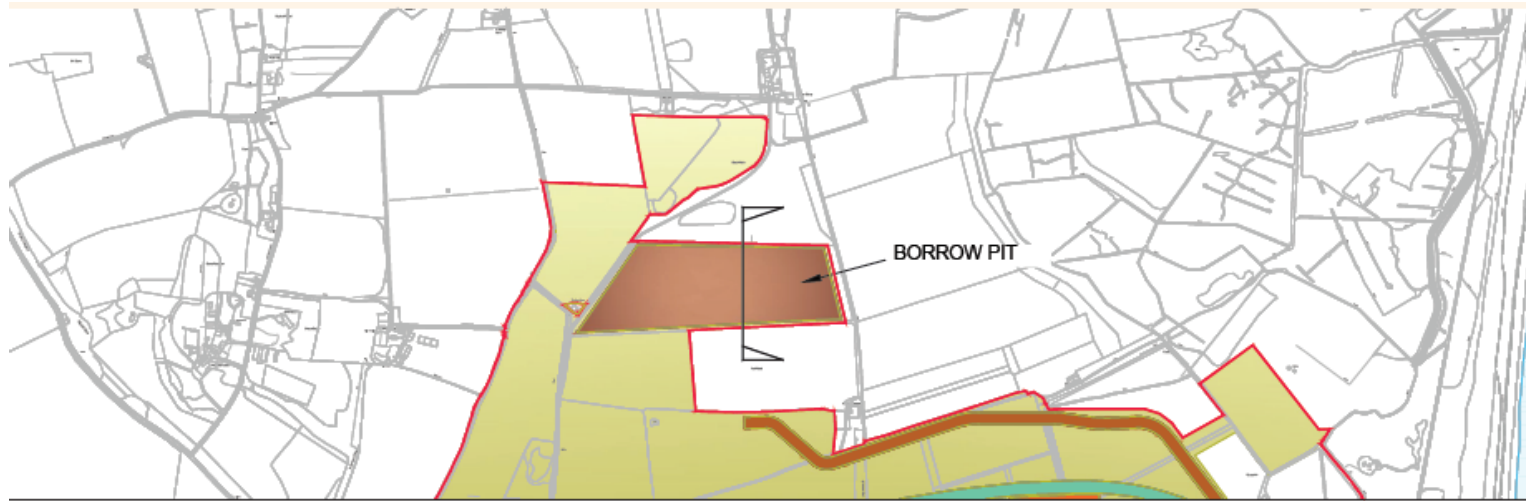
Spoil Management



EDF Energy Vol. 1 p.217

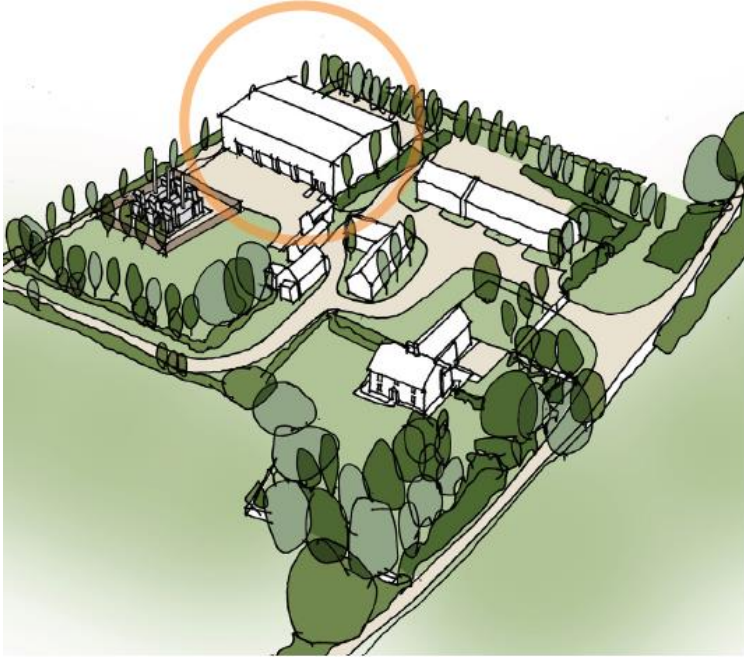
Spoil Management

Typical borrow pit cross-section

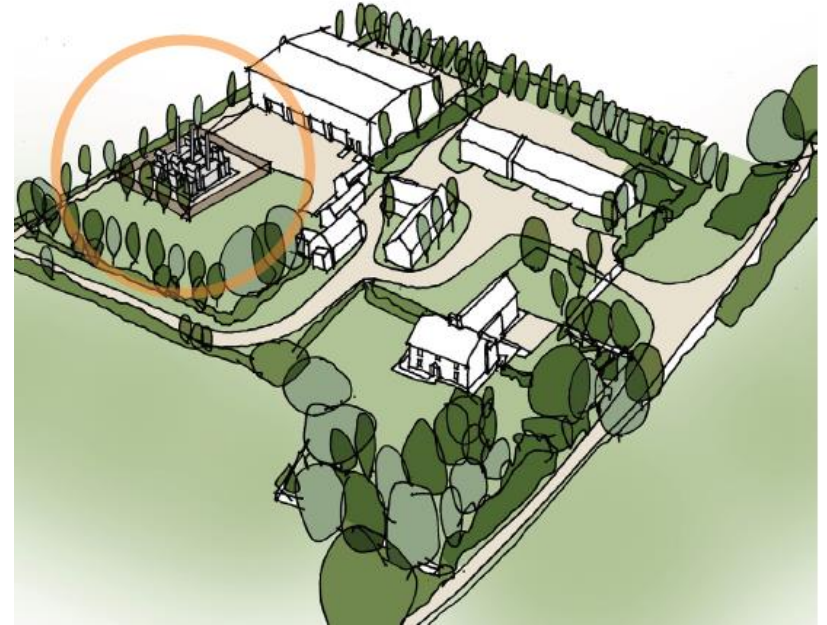


EDF Energy Vol. 1 p.219

Upper Abbey Farm



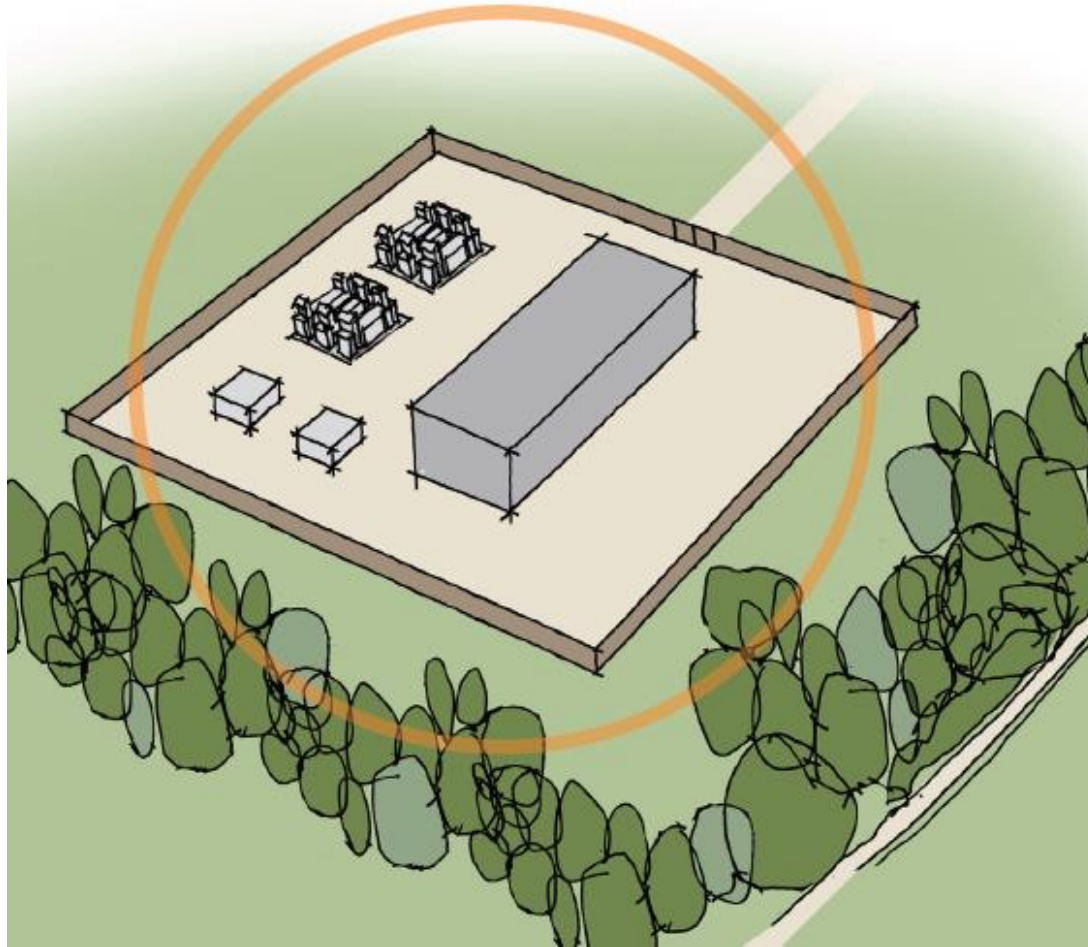
Emergency Equipment Store - illustrative



Back Up Generator - illustrative

EDF Energy Vol. 1 pages 189 & 190

Upper Abbey Farm



Electrical Substation - illustrative

EDF Energy Vol. 1 p.191

Accommodation Campus

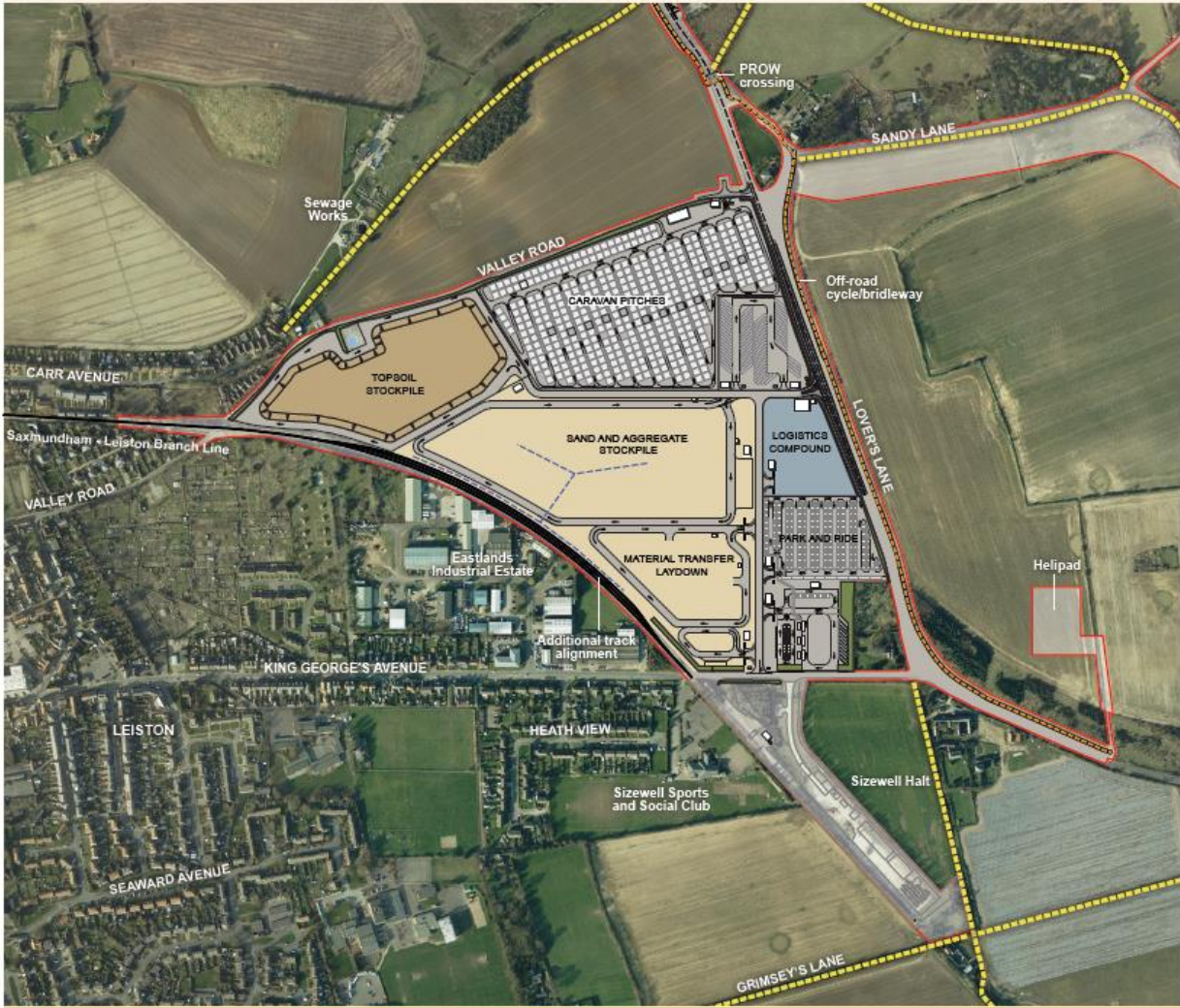


EDF Energy Vol. 1 p.232

Land East of Eastlands Industrial Estate (Option 1 Sizewell Halt)



Land East of Eastlands Industrial Estate (Option 2 rail siding)



Stage 3 Public Consultation - Areas of Change

SOCIO-ECONOMIC

- Testing 7900 + 600 workers at peak;
- Housing fund;
- Health Impact Assessment;
- Tourism Fund



Stage 3 Public Consultation – Overview of areas of change: TRANSPORT

- Strategy – testing for 7900 at peak, Road and rail led proposals
- Rail improvements including level crossings
- B1122 Link Road & Theberton Bypass
- Two Village Bypass
- Wickham Market mitigation proposals
- Park and Ride sites
- Freight Management Facilities
- Other junction improvements



Transport Strategy

No sea based strategy

Rail-led option

New: Road-led option

Concerns around greater impact of increased HGV numbers on A12 and elsewhere

Concern about possible relaxation of operation hours between 7.00-23.00

Transport modelling to include testing for 7,900 workers at peak



RAIL - LED

■	A12 - Two-village bypass
■	A12 / B1122 - Yoxford roundabout
■	B1122 - Theberton bypass
■	Other minor road improvements
■	Rail - Green rail route to the temporary construction area
■	Rail - East Suffolk line and branch line upgrades and level crossings works
■	Rail - Sizewell Halt or rail siding at LEEIE for early years
■	Beach landing facility

HGV operation 07:00 – 23:00

HGVs 225 average at peak/450 busiest day

Up to 5 trains a day

ROAD - LED

■	A12 - Two-village bypass
■	A12 / B1122 - Yoxford roundabout
■	B1122 - Sizewell link road
■	Other minor road improvements
■	Freight management facility
■	Rail - East Suffolk line and branch line upgrades and level crossings works
■	Rail - Sizewell Halt or rail siding at LEEIE for construction period
■	Beach landing facility

HGV operation potential for extended hours

HGVs 375 average at peak/750 busiest day

Up to 2 trains a day

Rail-led proposals

East Suffolk Line Level crossings:

12 closures and diversion; 33 upgrades –
primarily Public Rights of Way

Passing loop between Melton and Campsea Ashe

“Green rail route” to site

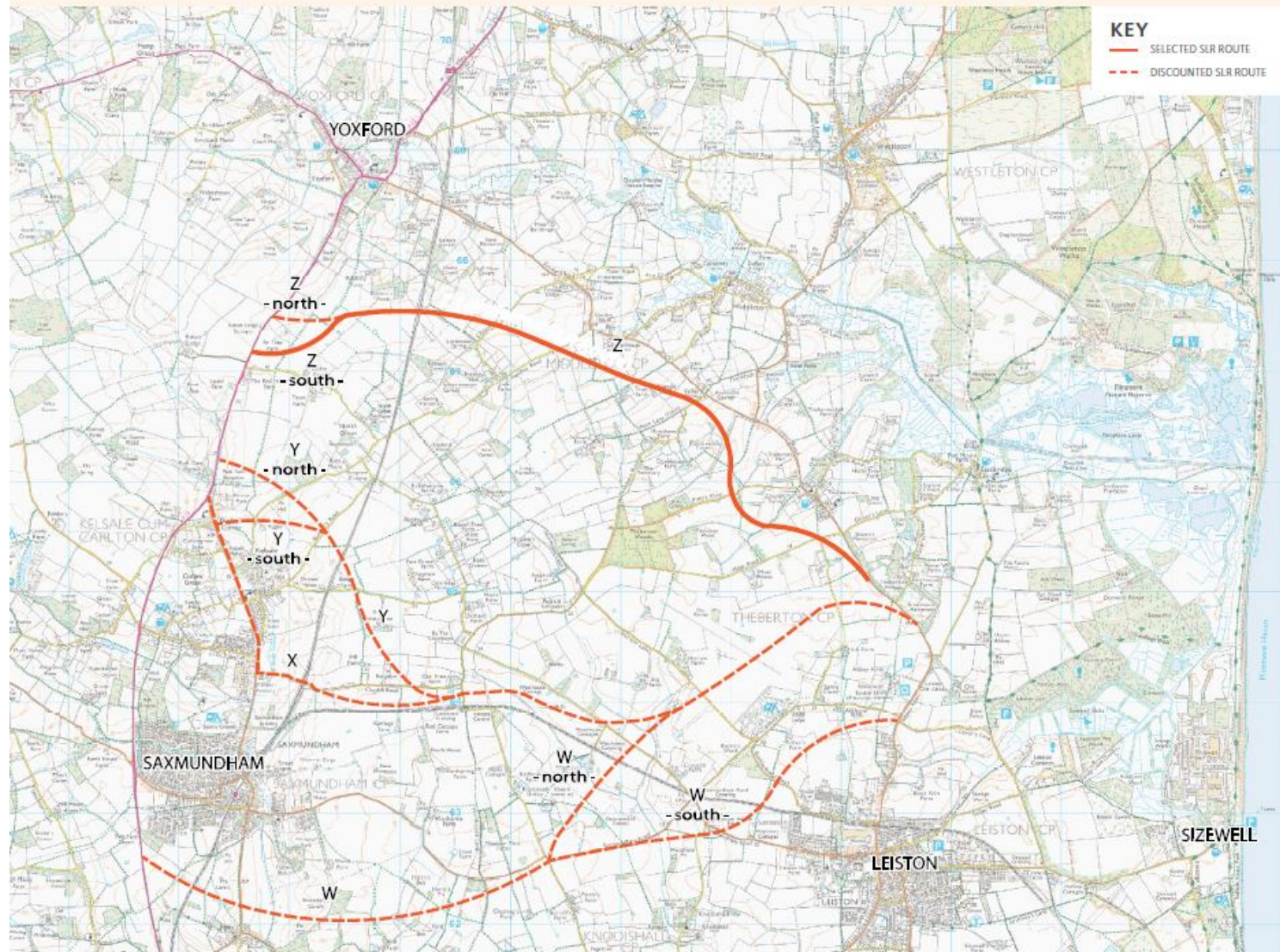


B1122 mitigation – rail-led: Theberton Bypass



B1122 mitigation – road-led: Link road potential route options

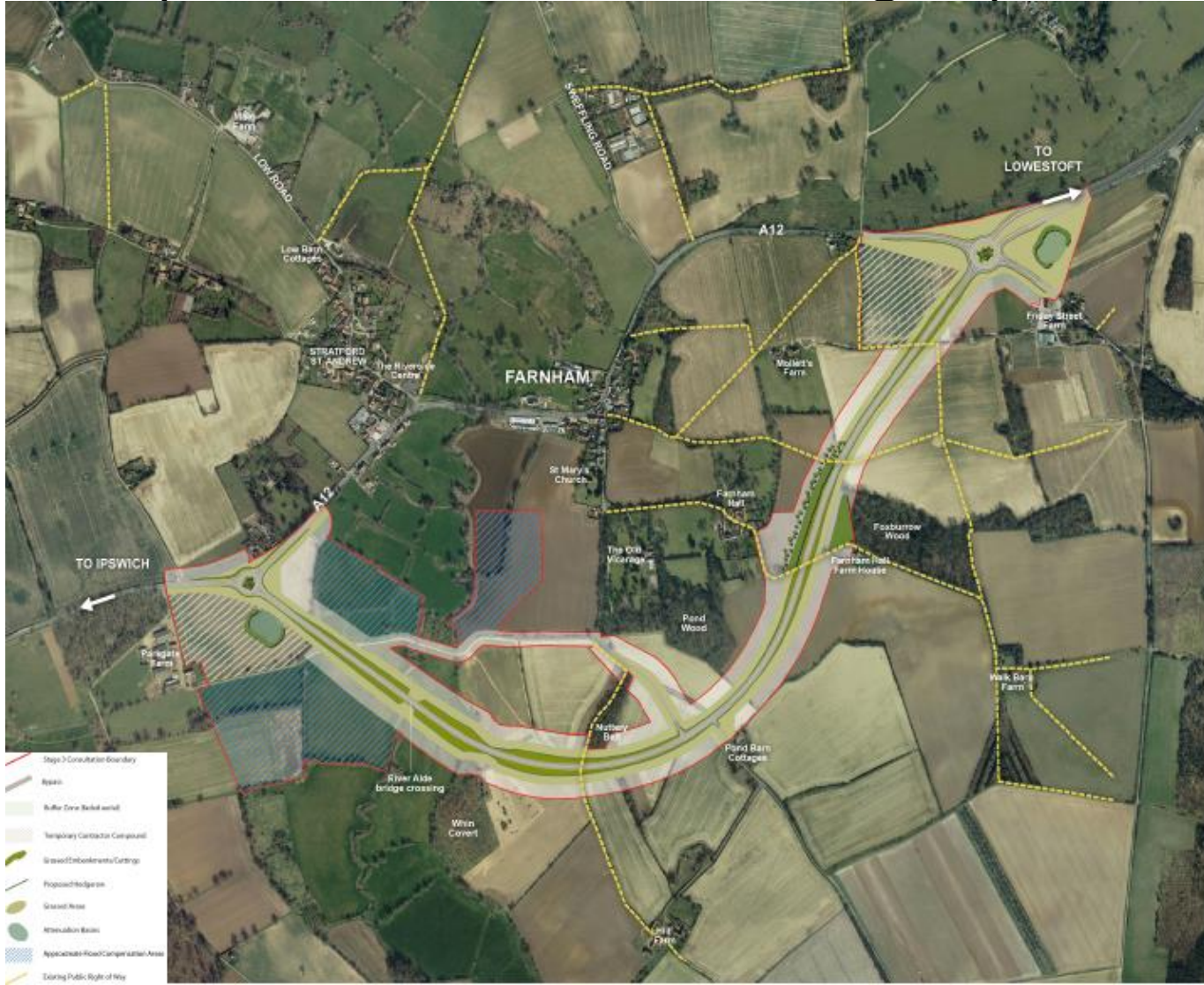
Figure 10.1 Sizewell link road potential route options



B1122 mitigation – road-led: Proposed link road



A12 Two-Village Bypass Farnham/Stratford St Andrew (road and rail-led strategies)



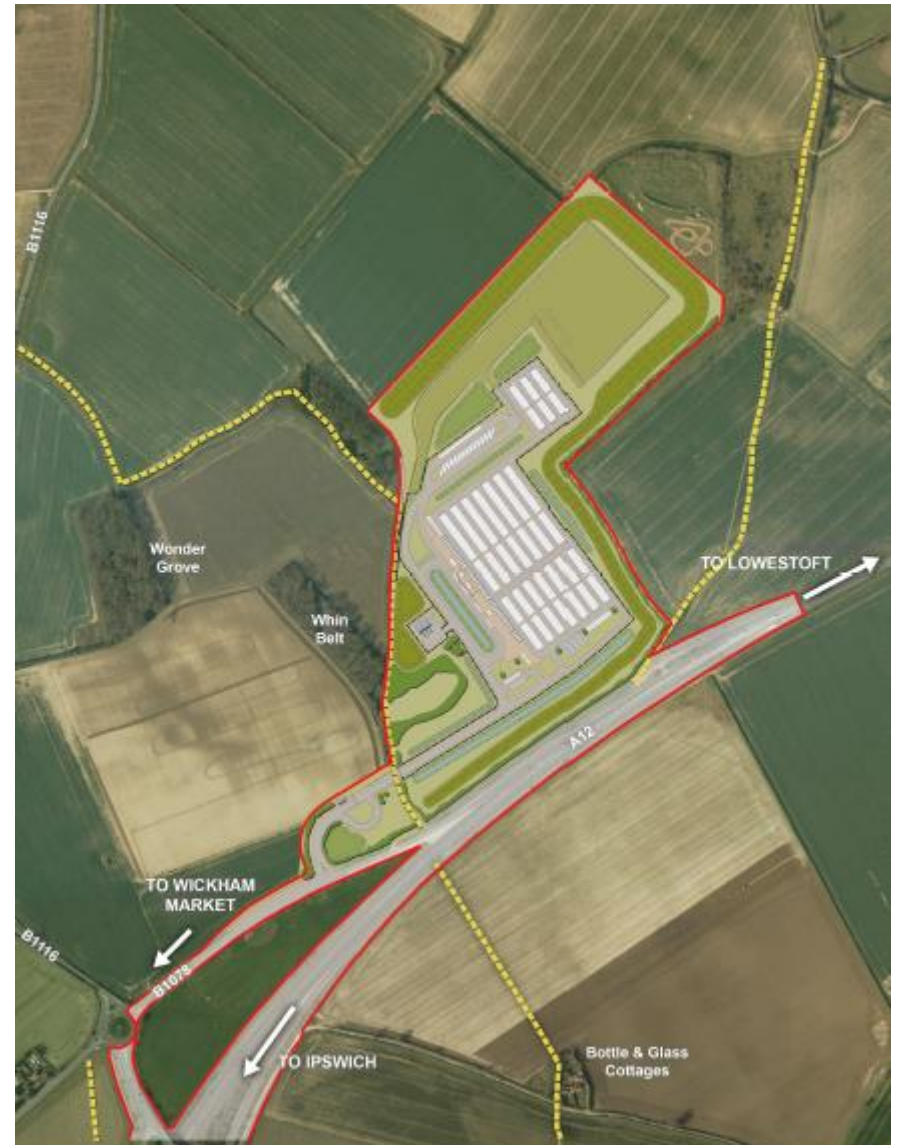
Yoxford A12/B1122 Roundabout



Park and Ride Sites



Darsham



Wickham Market / Hacheston

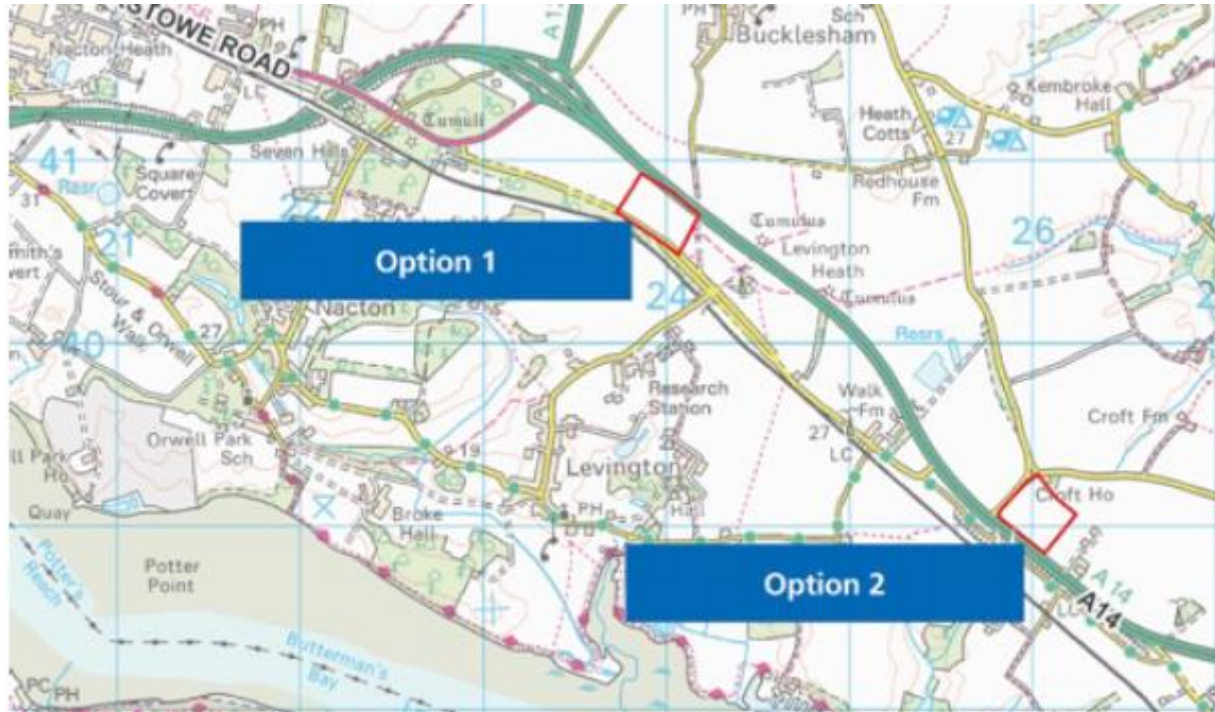
Wickham Market proposed mitigations

Option 1: On-street parking restrictions on B1078

Option 2: Diversion (via narrow listed bridge)



Freight management facility near A14



Other minor junction improvements

Junction A140/B1078 west of Coddendam

B1078/B1079 east of Otley College

A12/B1119 at Saxmundham

A12/A1094 Friday Street

A12/A144 south of Bramfield

A1094/B1069 South of Knodishall



QUESTIONS?



Tea and Coffee Break



Workshop

Introduction by workshop facilitator, Sharon Bleese.



Feedback from Tables



SUMMARY

Cllr Richard Smith, SCC
Deputy Chairman, JLAG



Next Steps:

- We will share the outputs of this workshop with delegates and all town and parish council's not in attendance;
- Outputs will be published on the Sizewell C project pages on www.eastsuffolk.gov.uk;
- We will circulate outputs via SALC;
- We will be drafting our Stage 3 response which will be in a report that goes to Cabinet meetings of SCDC and SCC on March 11 and 12 respectively;
- Engage with Planning Aid England to help with drafting your responses.
- Responses submitted to EDF Energy by 29 March 2019.

PLEASE EMAIL A COPY OF YOUR RESPONSE TO EDF ENERGY TO THE SIZEWELL C PROJECT TEAM sizewellc@eastsuffolk.gov.uk

Our response will be published on our web pages.



THANK YOU FOR ATTENDING

