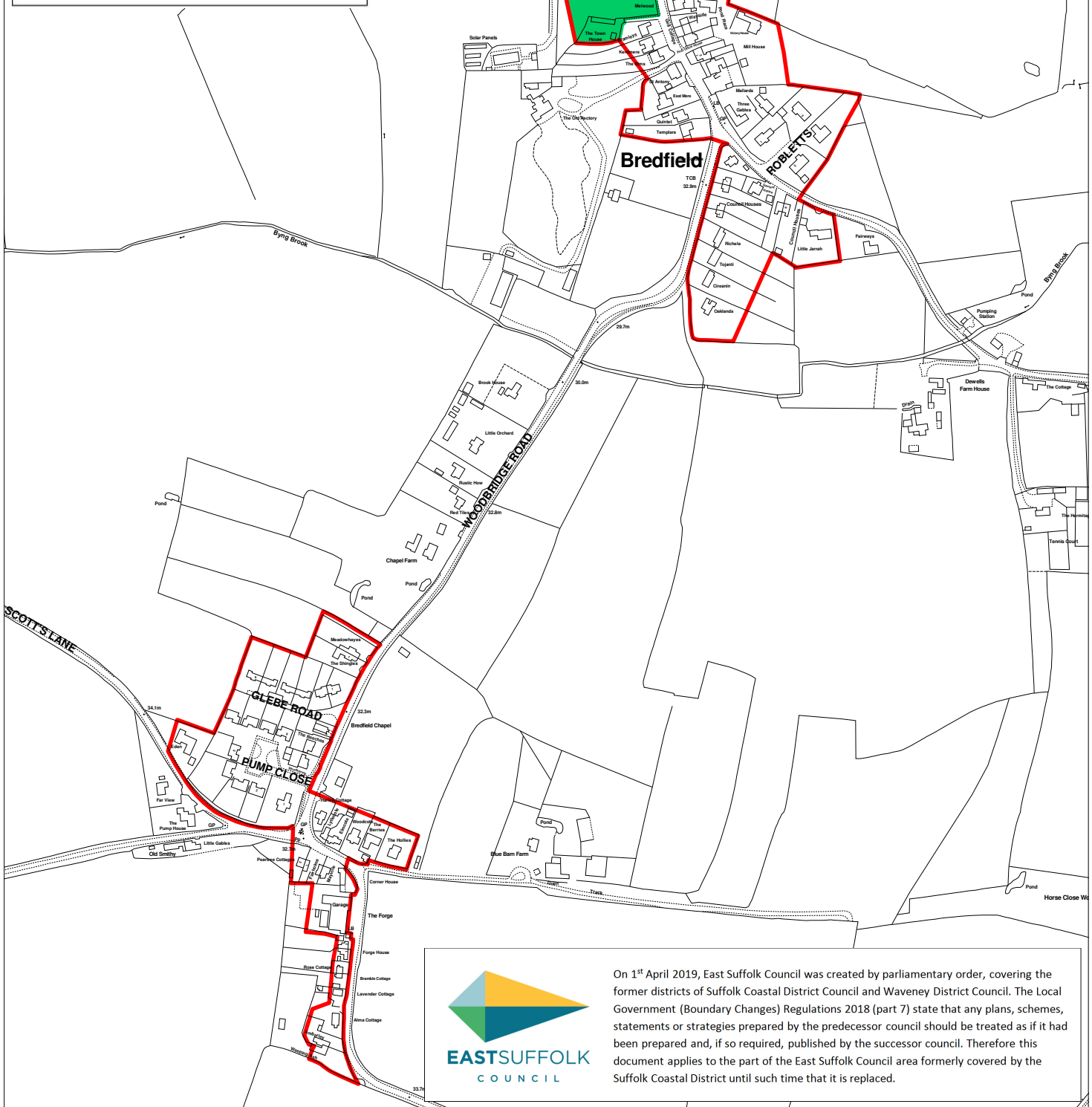




This document was superseded on 23rd September 2020 with the adoption of the East Suffolk Council - Suffolk Coastal Local Plan.



On 1st April 2019, East Suffolk Council was created by parliamentary order, covering the former districts of Suffolk Coastal District Council and Waveney District Council. The Local Government (Boundary Changes) Regulations 2018 (part 7) state that any plans, schemes, statements or strategies prepared by the predecessor council should be treated as if it had been prepared and, if so required, published by the successor council. Therefore this document applies to the part of the East Suffolk Council area formerly covered by the Suffolk Coastal District until such time that it is replaced.

Key

- AP28 - Areas to be Protected from Development
- Physical Limits Boundary (Core Strategy - SP19)

Saved Policies Map A - Bredfield

Suffolk Coastal District Council

Scale 1:5000

