

Waveney Local Development Framework

Local Development Scheme - Fourth Review -

September 2010



Waveney District Council
Serving the Community

Waveney Local Development Framework

Local Development Scheme - Fourth Review -

September 2010

Stephen Archer
Strategic Director
Waveney District Council
Town Hall
High Street
Lowestoft
Suffolk
NR32 1HS

Summary

As part of a fundamental change to the plan making process, introduced through planning legislation in 2004, Local Planning Authorities are required to prepare Local Development Frameworks. Local Development Frameworks consist of a suite of documents. Some of these form part of the statutory development plan. Other documents, such as this Local Development Scheme, assist in managing the process.

The aims of the Local Development Scheme are to: -
provide a brief description of all Local Development Plan Documents to be prepared;
establish which documents are part of the development plan;
set out a timetable for their preparation, with critical dates;
set out an explanation of how progress against the Scheme will be monitored.

Under regulations, the Council is required to submit this Scheme to the Secretary of State, who then has a period of four weeks, or more if desired, to consider the Scheme and direct any changes. When published, the Council will be accountable to the timetable for the preparation of the each of the documents within. However, the Scheme is intended as a living document that may need to be amended and updated in the light of experience. This will be considered through the Annual Monitoring Report. The first Local Development Scheme was required to be submitted to the Secretary of State within six months of the legislation commencing i.e. by 28 March 2005. This was achieved.

This document is the Fourth Review of the Local Development Scheme. It has been prepared following consideration of the Annual Monitoring Report 2008/09 and taking into account progress that has been made on the Development Plan Documents. The Fourth Review promotes amendments to the current Local Development Scheme and sets out a revised timetable for the preparation of the Development Plan Documents. This Scheme also identifies an additional Development Plan Document to be prepared which will allocate sites for Gypsy and Traveller accommodation.

This Fourth Review was approved by the Council's Cabinet on 22 September and submitted to the Secretary of State on 27 September 2010. The Secretary of State approved the Fourth Review on 29 September and it came into effect on 4 October 2010.

Contents

1. Introduction	2
2. Waveney's Current Planning Framework	2
3. Development Plan Documents	4
4. Non Development Plan Documents	5
5. Sustainability Appraisal and Appropriate Assessment	5
6. Development Plan Documents – Schedule of Preparation	6
7. Background Studies	6
8. Relationship with existing planning policy documents	7
9. Monitoring and Review	8
10. Risks and Resources	8
11. Schedule of Local Development Documents	10
12. Timeline of DPD Preparation	13
13. Relationship between Local Development Documents	14
 Appendix 1 – Proposed Local Development Documents	 16
Appendix 2 – List of Saved Policies from Waveney Adopted Local Plan	21

The Planning and Compulsory Purchase Act 2004 requires Local Planning Authorities to prepare Local Development Schemes. A Local Development Scheme (LDS) is a public statement of the Local Planning Authority's three-year programme to prepare the various Local Development Documents that constitute the Local Development Framework. It is in effect a project management brief.

The aims of the Local Development Scheme are to:-

1. Provide a brief description of all Local Development Documents to be prepared, the content and geographical area to which they relate;
2. Establish which documents are part of the development plan;
3. Set out the planning timetable for the preparation of the Local Development Documents with critical dates;
4. Set out an explanation of how progress against the LDS will be monitored together with the approach to reviewing and updating the scheme.

The Council will review and update the Scheme, as appropriate, following the completion of the Annual Monitoring Report.

This Scheme sets out Waveney's intentions regarding the preparation of Local Development Documents over a three year period from September 2010 to August 2013.

(1) Introduction

1.1 The Planning and Compulsory Purchase Act commenced in September 2004. The Act proposed fundamental changes to the plan making process. The main elements are set out below:

Planning Level	Previously	Now
National	Planning Policy Guidance (PPG)	Planning Policy Statements (PPS)
Regional	Regional Planning Guidance	Regional Spatial Strategies ¹
County	Structure Plans	Local Development Frameworks
Local	Local Plans	

Planning Policy Statements (PPS) are statements of Government policy. They are self contained policy statements in their own right. There is no need to repeat these national planning policies at either the regional or the Local Development Framework level.

Regional Spatial Strategies (RS), replaced Regional Planning Guidance. However, as of the 6th July 2010 the East of England Plan, the RSS for the East of England was revoked by the Secretary of State.

Local Development Frameworks (LDF) replaced Structure Plans and Local Plans. A Local Development Framework is effectively a portfolio of planning documents. Some of these documents form part of the statutory development plan (Development Plan Documents) alongside the Regional Strategy¹. The Development Plan Documents will be used by Local Planning Authorities to help determine appropriate planning applications. The other documents in the portfolio form part of the Local Development Framework but are there in order to help manage the process or complement the Development Plan Documents. These include Supplementary Planning Documents, Annual Monitoring Reports, the Statement of Community Involvement and this Local Development Scheme. In this way, the Local Development Framework together with the Regional Strategy provides the essential framework for planning in the Waveney area.

1.2 Local Development Frameworks are intended to strengthen community and stakeholder involvement. The preparation of a Statement of Community Involvement commits the Local Planning Authority to this approach.

1.3 A key aspect of the new system is for Local Planning Authorities to adopt a 'spatial' planning approach. Spatial planning goes beyond traditional land-use planning to bring together policies for the development and use of land with other policies and programmes that influence how places function. The Local Development Framework, for example, provides the means of delivering the spatial aspects of the Waveney Sustainable Community Strategy.

¹ On 6th July 2010 the Secretary of State revoked all Regional Strategies. It is anticipated that Regional Strategies will be abolished during the three year period of this Local Development Scheme.

(2) Waveney's current planning framework

2.1 The Waveney Local Plan covers Waveney District, excluding the Broads Authority area. It was adopted in November 1996 with an end date of 2006. Appendix 2 lists the Adopted Local Plan Policies that the Secretary of State has directed can be 'saved,' until such time as they are superseded by local Development Framework Policies.

2.2 Work started on a review of the Adopted Plan in 2000. A Revised Draft Local Plan was published, on an informal basis, for consultation purposes between February and April 2003. Following consideration of representations, amendments were approved in February and May 2004 and incorporated into a Waveney Interim Local Plan. The Interim Local Plan represented the emerging planning policies and has been used alongside the adopted Local Plan to assist in determining planning applications. In this way, the Interim Local Plan has helped to provide more up to date guidance in this transitional period, as the Council moved towards the new system.

2.3 The Waveney Local Development Framework has to date been prepared to be in conformity with the East of England Plan. The East of England Plan (Regional Spatial Strategy) was adopted in May 2008. However, on the 6th July 2010 the East of England Plan was revoked by the Secretary of State. Early work on the Local Development Framework was prepared against the emerging regional policies. The Plan referred to the vision for the Great Yarmouth and Lowestoft sub region. This vision emphasised the need to promote the comprehensive regeneration of the two towns, to harness their strengths and to develop opportunities especially for urban renaissance and the environmental economy. During the course of the preparation of the Local Development Documents for Waveney, there has been a need to consider the sub region as a whole. Despite the revocation of the East of England Plan there is still a need to consider the role of the sub region given the many common challenges and synergies between the two towns. To this end, the Council have been and still are working closely with Norfolk and Suffolk County Councils, the Broads Authority and Great Yarmouth Borough Council to address the regeneration needs of the two towns.

2.4 In view of the focus on the regeneration needs of Lowestoft and Great Yarmouth the Planning Policy Team are working closely with Great Yarmouth Borough Council in the preparation of Local Development Framework Documents, including the alignment of timetables where possible.

2.5 An Urban Regeneration Company (URC) was designated for the two towns of Lowestoft and Great Yarmouth in March 2005. The geographical focus in Lowestoft is on Lake Lothing, the outer harbour and Ness Point. A requirement of designation is the preparation of a masterplan. The masterplan will consist of three elements: -

- a strategic overview (of the two geographical areas)
- a spatial masterplan(s)
- an implementation strategy

The URC, 1st East, is working in partnership with the Local Authorities in preparing the spatial masterplans as Area Action Plans. They will thus form part of the development plans for the two districts and consequently part of their respective Local Development Frameworks. Therefore, this Local Development Scheme includes a timetable for the preparation of the Area Action Plan for the URC area within Lowestoft.

(3) Development Plan Documents

3.1 The Waveney Local Development Framework comprises the following Development Plan Documents:

Core Strategy - the Core Strategy sets out the key elements of the planning framework for the area. It comprises a vision and strategic objectives, along with a spatial strategy, core policies and delivery and monitoring frameworks. The time horizon for the Core Strategy has been aligned with that for the East of England Plan to 2021 but to 2025 for housing, to ensure a 15 year supply of housing from adoption of the Core Strategy. The Core Strategy provides the strategic context for the preparation of the Development Management Policies Document, the Site Specific Allocations Document and the Area Action Plan. The Council has now adopted the Core Strategy (January 2009).

Site Specific Allocations Document - the identification of sites/land for particular uses or a mix of uses. Site specific allocations will be accompanied by policies to assist such development including access, design and any planning obligations. Allocations will be identified on the Proposals Maps

Development Management Policies – this document will contain criteria based policies that will be used to help determine planning applications. Relevant policies will be illustrated on the Proposals Maps.

The Development Management Policies document will follow the same timetable as for the site-specific allocations and on adoption the Proposals Map will be updated to display a geographical representation of the allocations and policies of the two development plan documents.

Gypsy and Traveller Site Specific Allocations DPD - The Council will also be preparing a separate Site Allocations Development Plan Document to deal solely with the need to provide sites for Gypsies and Travellers and Travelling Show People. Circular 01/2006 and Circular 04/2007 state that Local Planning Authorities must identify land in a Development Plan Document to accommodate need for Gypsies and Traveller and Travelling Showpeople. The Suffolk Cross-Boundary Gypsy and Traveller Accommodation Assessment (May 2007) identified a need for 4 additional permanent residential pitches for Gypsies and Travellers by 2016. This need has recently been fulfilled by an extension to the Kessingland Gypsy and Traveller site. The assessment also estimated a need for 10 additional transit pitches in Waveney. The Core Strategy states that sites for transit provision will be identified through a Site Specific Allocations DPD. There is currently no evidence of need for a Travelling Showpeople site. However, through the preparation of this DPD, the need for Gypsy and Traveller and Travelling Showpeople accommodation will be reviewed.

On adoption of this DPD the Proposals Map will be updated to identify any sites allocated for Gypsy and Travellers and Travelling Showpeople.

Lake Lothing and Outer Harbour Action Area Plan (AAP) – an area action plan provides the planning framework for an area where significant change or conservation is needed. The Waveney Core Strategy refers to an Area Action Plan for Lake Lothing (Policy CS05). The boundary is defined on the proposals map as essentially the north and south sides of Lake Lothing Denmark Road / Harbour Road and Waveney Drive / Victoria Road respectively, and the Outer Harbour. The area approved for the Urban Regeneration Company extends this area to include Ness

Point and the area immediately to the west of London Road South in the vicinity of the Clifton Road car park. The Council will lead on the preparation of the AAP, but will work in partnership with 1st East and other relevant partners, including Suffolk and Norfolk County Council's.

The Council are preparing the Area Action Plan for the Lake Lothing and Outer Harbour area of Lowestoft to a timetable to follow shortly behind the Site Specific Allocations and Development Management Policies Documents.

(4) Non – Development Plan Documents

4.1 This Local Development Scheme forms part of the LDF but it is not a development plan document. Other similar documents include: -

Statement of Community Involvement - this sets out the ways in which we will involve the community in the preparation, alteration and continuing review of all Local Development Documents and in major planning applications. It sets out our overall vision for involving the community, the methods we will use and opportunities to become involved. This document was prepared during 2005 and was adopted in January 2006.

Supplementary Planning Documents – these documents should provide further detail to the policies or proposals of the development plan e.g. more detailed guidance for a particular site set out in development briefs. They may be thematic or site specific. Such documents can only relate to a specific policy or proposal in an adopted Development Plan Document. To assist in the operation of Development Plan Document policies and proposals the Council will produce a number of Supplementary Planning Documents.

Annual Monitoring Reports - these Reports will review progress against targets and milestones set out in this Local Development Scheme. The report will analyse whether policies and targets have been met, what impact policies are having on targets and whether policies need adjusting. The Report will also identify where any amendments need to be made to the timetable for the preparation of documents set out in this Scheme. It will be prepared by the December following the financial year to which the review data relates.

(5) Sustainability Appraisal and Appropriate Assessment

5.1 All Development Plan Documents will be subject to a Sustainability Appraisal. This includes the need for a Strategic Environmental Assessment under an EU Directive. The Sustainability Appraisal is slightly wider than the Strategic Environmental Assessment as it includes economic and social criteria as well as environmental factors. The purpose of both of these appraisals is to inform decision making by providing information on the potential implications of policies. The process for their preparation runs in parallel with the production of Local Development Documents. A Sustainability Appraisal Report is required to accompany the 'Publication' version of the Development Plan Document.

5.2 In addition, in preparing Local Development Documents, the need for an Appropriate Assessment should be considered. Appropriate Assessment was introduced by the EU Habitats Directive and is an assessment of the potential significant effects of a plan on European Sites designated for their nature

conservation importance. A plan should only be approved after determining that it will not adversely effect the integrity of such sites.

(6) Development Plan Documents - Schedule of Preparation

6.1 The schedule below sets out the Local Development Framework documents the Council intend to produce. The stages the Council need to go through are identified in more detail in Appendix 1. This appendix provides guidance on the nature of the document, its role and purpose and a timetable for its preparation and review. It also establishes “milestones” in terms of key dates in the process based on the following subdivision of tasks: -

Development Plan Documents (DPDs)

- Consulting statutory bodies on the scope of the Sustainability Appraisal – in accordance with the Environmental Assessment of Plans and Programmes Regulations 2004:
 - English Heritage
 - Natural England
 - Environment Agency

This initial stage also constitutes the commencement date for the preparation of the DPD.

- Pre-Publication Consultation – This could consist of a number of stages of public participation such as consultations on broad options and more specific consultations on preferred options.
- Publication of the DPD – this is the final draft of the DPD following community and stakeholder engagement on issues/options. The document is published for further public comment but it would not be expected that more than minor changes would be made at this late stage.
- Submission of the DPD – The DPD is sent to the Secretary of State for Examination. An Independent Planning Inspector is appointed to assess the soundness of the document. The Examination of the document would usually include a public hearing.
- Adoption of the DPD – The Inspector issues a report that is binding on the Council. Assuming the document is found sound the Council adopt the DPD.

(7) Background Studies

7.1 In the early document preparation phase the Council need to undertake survey work or studies to provide background information and evidence for policy formulation. These documents may include, for example, a retail study that could assess the likely amount of future retail floorspace required within the district and guidance as to the most appropriate locations. This type of study assists the Council in preparing its retail planning strategy and to devise appropriate spatial policies. These background studies, that form the factual basis for the policy framework, are made available on the Council's website on an on-going basis. (www.waveney.gov.uk).

7.2 Many of these studies have already been prepared in connection with the Core Strategy and may require updating. Other work will need to be freshly commissioned. It is not always possible to predict in advance the need for such background papers as their demand may be dictated by particular representations as the development plan process progresses.

(8) Relationship with existing planning policy documents

8.1 Under the transitional arrangements for the new system, existing planning documents could be “saved” for a period of three years from the commencement of the Act. The intention then was that during this time the Local Planning Authority would bring forward Development Plan Documents that would gradually replace these saved plans i.e. the Waveney Local Plan and the Suffolk Structure Plan.

8.2 The policies in the current Waveney Local Plan were saved until September 2007. However, the Government expectation that all local authorities would have a first round of Local Development Framework documents in place within 3 years was not achieved. The system has been far more complex and time consuming than anticipated. Therefore the Secretary of State has allowed for Council's to ‘save’ some of the adopted policies for an additional period, until such time as they are superseded by new policies. This Scheme indicates that the new Development Plan Documents will not be in place until 2010. As a consequence, the Council has identified policies that need to be saved for an additional period. The Secretary of State granted permission for these policies to be saved on 14th September 2007. The saved policies will continue to be used when making development control decisions within the District until the new Development Plan Documents are adopted.

8.3 Appendix 2 lists the adopted policies that have been saved beyond September 2007. The intention is that in due course all of the existing Local Plan policies will be modified, updated or deleted, as the relevant Development Plan Documents are prepared. Against each policy the Council have identified whether it will ultimately be replaced or deleted and in which Development Plan Document it will be carried forward. As each document is adopted, these policies will cease to be saved, as they will be formally superseded by an updated or modified policy in the relevant Development Plan Document. The adoption of the Waveney Core Strategy has already replaced a number of saved policies.

8.4 The Council have also adopted a number of Supplementary Planning Guidance documents which relate to “saved” policies in the adopted Local Plan. These will continue to be used as material considerations in determining planning applications until such time as the policies are replaced by either updated or revised policies in the new Development Plan Documents.

8.5 Following the adoption of the appropriate planning policy in the Development Plan documents, new Supplementary Planning Documents will be prepared.

8.6 Supplementary Planning Guidance that relates to “saved” policies:

- Suffolk Design Guide 1993
- Greenways Strategy for Lowestoft December 1992
- Greenways Strategy for Kessingland February 1997
- Gosford Road Beccles October 1998
- Woods Meadow Development Brief (draft) July 1993
- Design guidance for landing stages at Southwold Harbour August 1997

- Revised Waveney Local Plan Policies - Tourism in Lowestoft May 1998

(9) Monitoring and Review

9.1 The Annual Monitoring Report will be used as a basis for assessing progress in preparing the Local Development Documents as set out in this Local Development Scheme. Essentially the Annual Monitoring Report will assess:

- whether the Local Planning Authority is on track to meet its targets and if not the reasons why;
- what impact the Local Planning Authorities policies are having on national, regional and local targets;
- whether the Local Planning Authority needs to amend, update or replace any policy and how this will be undertaken.

9.2 The Annual Monitoring Report will cover data collection on a financial year basis. It will be reported to the Council's committee cycle each Autumn, so that any financial implications can be considered in budget planning for the following financial year. The Annual Monitoring Report will be published by December each year.

(10) Risks and Resources

10.1 This Scheme sets out timescales which are to a large extent best estimates of what the Council think can be achieved with the predicted level of resources. It is difficult to be precise about such resources over a three to four year period. This section outlines the resources available and some of the risks associated with achieving the identified milestones.

10.2 The Planning Policy Team – a team of 5 full-time equivalent professional planning officers, a planning assistant and a planning technician are the section within Waveney District Council taking a lead on preparing the Local Development Framework. At an early stage, it was recognised that if the deadlines set out in the Scheme were to be met there would be a need for a consistent level of staff resources.

10.3 The Council established a Local Development Framework working group, with both cross party representation and members from urban and rural wards. The working group also includes the representative member for the Local Strategic Partnership. This working group works alongside officers during the preparation of Local Development Framework documents, consider representations and makes recommendations accordingly. It acts as a focal point for information both for councillors and the community at large.

10.4 The Planning Policy Team continue to call on other District and County Council services, as well as statutory undertakers as appropriate, at various stages in the process.

10.5 A number of risks have been identified, associated with meeting the milestones set out in the Local Development Scheme. These risks particularly relate to the level of resources available, but not exclusively so.

10.6 Risks regarding resources can be considered in three categories (i) staffing, (ii) other individuals and bodies and (iii) finance.

10.7 The section has struggled in the past to recruit qualified planning staff to vacant posts. The greatest threat to meeting the milestones probably rests on the ability to retain and recruit appropriately qualified staff. This is particularly pertinent, as the Council, rather than 1st East, are now be taking the lead role in progressing the Area Action Plan through consultants, at the same time as progressing two other Development Plan Documents to adoption.

10.8 The Council have completed a number of background studies as part of the supporting evidence base for the Development Plan Documents prepared so far. However, there are still studies that need to be completed to support the other Development Plan Documents. Difficulties in recruiting and retaining staff and lack of finance could impact on the ability to complete these studies and hence keep to the timetable.

10.9 The Planning Policy Team are also dependent on the input of other individuals and organisations at the appropriate stages. Some of the larger organisations, for example the statutory bodies can absorb this commitment and in some cases dedicate staff accordingly. Others, for example Parish Councils, may find this task more daunting. Publication of this Local Development Scheme, however, can only assist in making everyone aware of our timetable and the associated deadlines.

10.10 Because there are a number of Development Plan Documents being submitted and examined at the same time or close together, the Examination and reporting timescales might have to be revised at a later date to take account of currently unknown factors, including the number of representations received, the length of the Examinations and the amount of resources the Planning Inspectorate have available.

Risks in summary

- * preparing three Development Plan Documents to a similar timetable
- * delays in undertaking background studies
- * quantity and complexity of representations received
- * recruiting and retaining qualified staff
- * finance beyond 2010/11
- * responses from other individuals and organisations
- * uncertainty over length of Examinations and resources the Planning Inspectorate have where a number of Documents are submitted and examined at the same time.
- * uncertainty over committee dates

11. Schedule of Local Development Documents – at a glance (based on revised milestones as set out in PPS12 Local Spatial Planning, June 2008)

Document Title	Status	Brief Description	Chain of Conformity	Consultation on the scope of the Sustainability Appraisal	Stakeholder and Community Engagement	Publication (final draft of DPD)	Submission to Secretary of State for Examination	Adoption
Core Strategy	DPD	Sets out vision, overall land use planning objectives, settlement strategy	General conformity with RSS and national policy	Oct 2005	Issues and Options: Oct-Dec 2005 Further Options: Feb-Mar 2006 Preferred Options: Jul-Aug 2006	N/A	Submission: Feb 2008 Hearing: Sept 2008 Inspectors Report: Dec 2008	Jan 2009
Site Specific Allocations	DPD	Sets out site-specific policies and the geographical areas to which they apply. These policies will be cross referenced to the proposals map	General conformity with Core Strategy, RSS and national policy	Aug 2006	Issues and Options: Dec 2006-Feb 2007 Further Issues and Options: Jul-Sept 2007 Preferred Options: Oct 2008-Jan 2009 Further Preferred Options: Oct 2009 – Nov 2009	Feb 2010	Submission: Jun 2010 Hearing: Oct 2010 Inspectors Report: Jan 2011	Feb 2011
Development Management	DPD	Polices for the control of	General conformity with	Aug 2006	Issues and Options: Dec	Feb 2010	Submission: Jun 2010	Feb 2011

Document Title	Status	Brief Description	Chain of Conformity	Consultation on the scope of the Sustainability Appraisal	Stakeholder and Community Engagement	Publication (final draft of DPD)	Submission to Secretary of State for Examination	Adoption
Polices		development which set out criteria against which planning applications will be considered. Some policies will be cross referenced to the proposals map	Core Strategy, RSS and national policies		2006-Feb 2007 Further Issues and Options: Jul-Sept 2007 Preferred Options: Sept 2009 – Oct 2009		Hearing: Oct 2010 Inspectors Report: Jan 2011	
Lake Lothing and Outer Harbour (Lowestoft) Area Action Plan	DPD	Sets out overall planning framework and detailed policies for a particular geographical area	General conformity with Core Strategy, RSS and national PPS	Feb 2006	Issues and Options: Mar-Apr 2006 Preferred Options: Jan-Feb 2007 Further Preferred Options: April 2010 – June 2010	Oct/Nov2010	Submission: Jan 2010 Hearing: April 2011 Inspectors Report: Jul 2011	Sept 2011
Gypsy and Traveller Site Specific Allocations	DPD	Allocates sites for the provision of Gypsy and Traveller and Travelling Showpeople accommodation	General conformity with Core Strategy, RSS and national policies	November 2011	Issues and Options: February 2012 Preferred Sites Consultation: August 2012	Nov 2012	Submission: Feb 2013 Hearing: May 2013 Inspectors Report: August 2013	Sept 2013
Statement of	LDD	Sets out the methods	DPD and SPD	N/A	Draft for	N/A	Submission:	Jan 2006

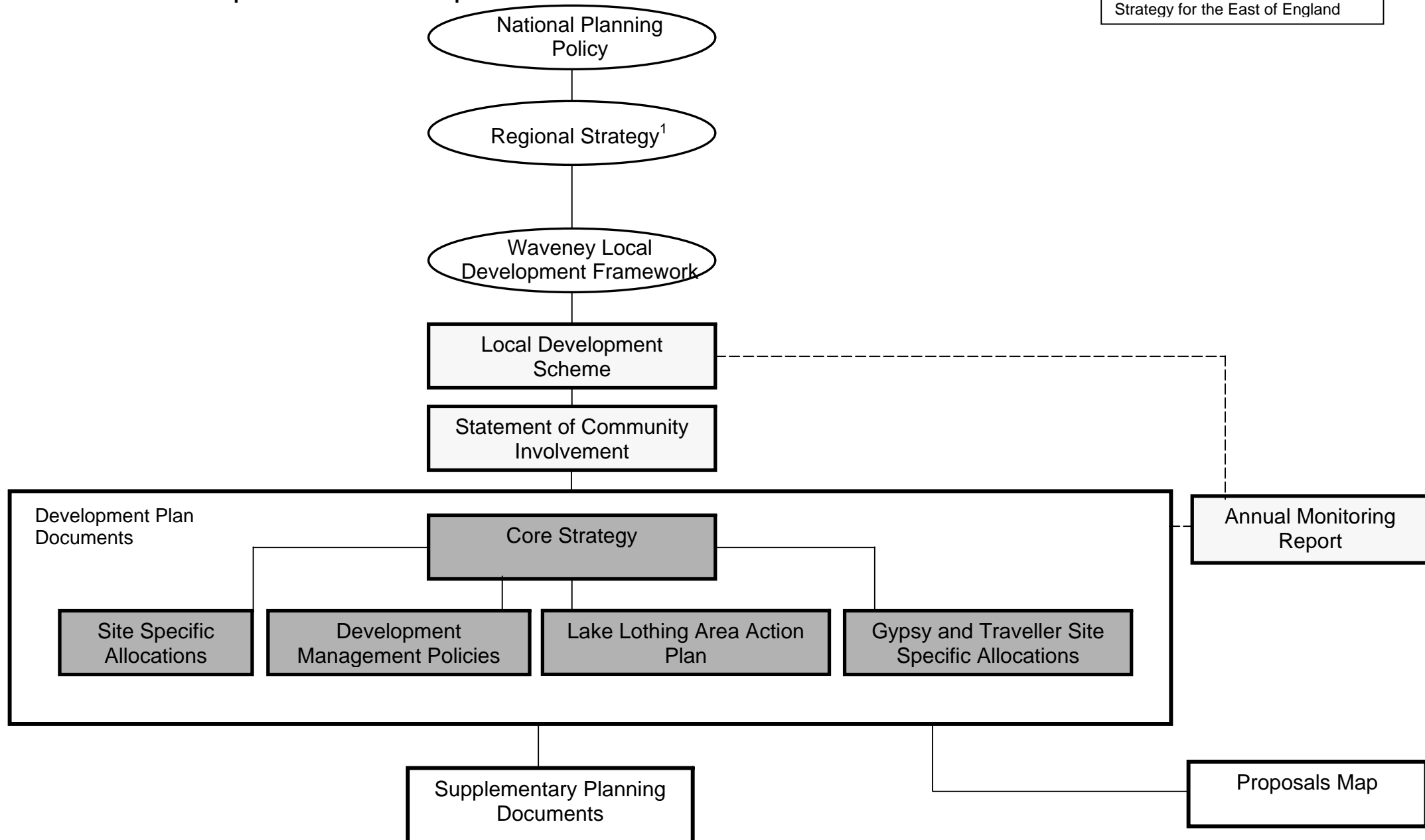
Document Title	Status	Brief Description	Chain of Conformity	Consultation on the scope of the Sustainability Appraisal	Stakeholder and Community Engagement	Publication (final draft of DPD)	Submission to Secretary of State for Examination	Adoption
Community Involvement		for engaging the community in the preparation of the documents listed in this schedule. This will also include links with the Council's other strategies and programmes	must comply with the arrangements set out in the Statement of Community Involvement		Consultation: Feb 2005		Jun 2005 Examination: Sept 2005 Inspectors Report: Nov 2005	

12. Timeline of DPD Preparation

Development Plan Document	2010					2011												2012												2013											
	A	S	O	N	D	J	F	M	A	M	J	J	A	S	O	N	D	J	F	M	A	M	J	J	A	S	O	N	D	J	F	M	A	M	J	J	A	S			
Core Strategy	Adopted January 2009																																								
Site Specific Allocations		*	●			✱	✱																																		
Development Management Policies		*	●			✱	✱																																		
Lake Lothing and Outer Harbour Area Action Plan			✱			■		*	●			✱	✱																												
Gypsy and Traveller Site Specific Allocations																✱			▲						▲			*			■		*	●				*	◆		

- ✱ Consultation on the scope of the Sustainability Appraisal
- ▲ Stakeholder / community engagement on issues and options
- ✱ Publication (final draft of DPD)
- Submission for examination
- * Pre hearing meeting
- Hearing
- ✱ Inspectors Report
- ✱ Adoption

13. Relationship between Local Development Documents



Appendices

Appendix 1

Proposed Local Development Documents

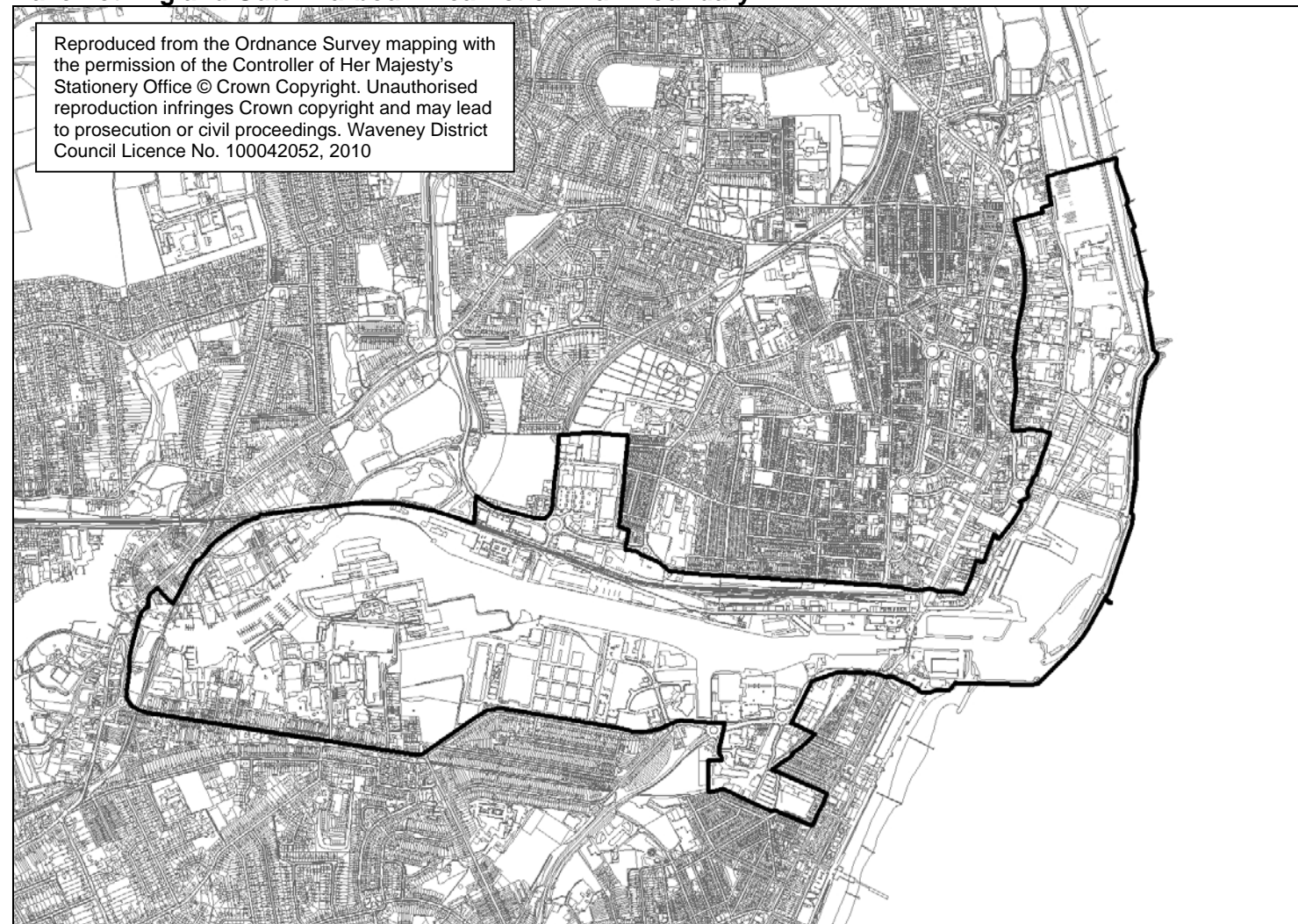
Document title	Waveney Local Development Document: Core Strategy
Subject matter	The Core Strategy sets out the spatial vision for the district, strategic objectives, a spatial strategy, core strategic policies, delivery and monitoring frameworks
Geographical area	Waveney District, excluding Broads Authority Area
DP or not DP	Development Plan
Responsible Authority for preparation	Waveney District Council
Background Studies	Great Yarmouth and Waveney Housing Market Assessment, Open Space Needs Assessment, Strategic Flood Risk Assessment, Cumulative Land Raising Study (Addendum to the SFRA), Waveney District Council Pitch and Non-Pitch Assessment, Biodiversity Audits, Waveney District Urban Housing Capacity Study, Waveney Strategic Housing Land Availability Assessment, Waveney Employment Land Study, Allotment, Cemeteries and Church Yards Needs Assessment: Supplement to the Open Space Needs Assessment, Suffolk Cross-Boundary Gypsy and Traveller Accommodation Assessment, Technical Note – Lowestoft Highway Scheme Option Testing
Timetable	Consultation on the Scope of the Sustainability appraisal: Oct 05 Issues and Options: Oct-Dec 2005 Further Options: Feb-Mar 2006 Preferred Options: Jul-Aug 2006 Submission: Feb 2008 Pre Hearing Meeting: July 08 Hearing: Sept 2008 Inspectors Report: Dec 2008 Adoption: Jan 2009
Review Proposals	The Annual Monitoring Report will assess progress. This will dictate the need for any review, although the Core Strategy will look forward to 2021 and 2025 for Housing.
Notes	The Core Strategy was adopted in January 2009

Document title	Waveney Local Development Document: Site Specific Allocations and Proposals Maps
Subject matter	The site specific allocations will identify the geographic areas to which specific planning policies apply. The proposals maps will identify areas for protection and illustrate locations and identify sites for particular uses.
Geographical area	Waveney District excluding the Broads Authority Area and the area covered by the Lake Lothing and Outer Harbour Area Action Plan
DP or not DP	Development Plan
Background Studies	As for Core Strategy, plus Landscape Character Assessment, Water Cycle Study, Site viability assessments, Borehole Investigations, Contamination Reports, Halesworth Retail Needs Assessment
Responsible Authority for preparation	Waveney District Council
Timetable	Issues and Options: Dec 2006-Feb 2007 Further Issues and Options: Jul-Sept 2007 Preferred Options: Oct 2008-Jan 2009 Publication (final draft of DPD): Feb 2010 Submission: Jun 2010 Hearing: Oct 2010 Inspectors Report: Jan 2011 Adoption: Feb 2011
Review Proposals	The Annual Monitoring Report will assess progress towards the delivery of specific allocations e.g. housing.
Notes	The Site Specific, Allocations will be accompanied by a Sustainability Appraisal.

Document title	Waveney Local Development Document: Development Management Policies
Subject matter	Policies setting out the criteria against which planning applications will be considered.
Geographical area	Waveney District excluding the Broads Authority Area
DP or not DP	Development Plan
Background Papers	As for Core Strategy, plus Landscape Character Assessment, Water Cycle Study, Affordable Housing Viability Study, Renewable Energy and Sustainable Construction Study
Responsible Authority for preparation	Waveney District Council
Timetable	Issues and Options: Dec 2006-Feb 2007 Further Issues and Options: Jul-Sept 2007 Preferred Options: Sept – Oct 2009 Publication (final draft of DPD): Feb 2010 Submission: Jun 2010 Hearing: Oct 2010 Inspectors Report: Jan 2011 Adoption: Feb 2011
Review Proposals	The Annual Monitoring Report will assess the effectiveness of development management policies against their progress to achieving spatial objectives and their use in operation.
Notes	The Development Management Policies will be accompanied by a Sustainability Appraisal.

Document title	Lake Lothing and Outer Harbour (Lowestoft) Area Action Plan
Subject matter	This document will set out spatial policies for this specific geographical area within central Lowestoft. In particular, it will provide a detailed framework for regeneration.
Geographical area	Lake Lothing Area (as defined below)
DP or not DP	Development Plan
Background Studies	As for Core Strategy, plus Water Cycle Study, URC Baseline Report (Halcrow, 2006), Strategic Framework (Halcrow, 2006), Baseline Report Lowestoft Ground Conditions (Halcrow, 2005), Outline Inspection of Quay Walls at Lowestoft (Halcrow, 2006), Advising on the Potential for Small Scale Renewable Energy Generation within the URC Area (Douglas-Westwood, 2006), Great Yarmouth & Lowestoft Property Market Baseline Report (Michael Beaman, 2006), Translating known Market Prospects into Spatial Requirements and Implications for Ports Infrastructure (Douglas-Westwood, 2006), Lowestoft URC Area Cultural Heritage Assessment (Scott Wilson, 2006). Plus an update of Retail Capacity, Employment Land requirements, and various area specific studies post the 2007 Preferred Options.
Responsible Authority for preparation	Waveney District Council
Timetable	Issues and Options: Mar-Apr 2006 Preferred Options: Jan-Feb 2007 Further Preferred Options: April 2010 Publication (final draft of DPD): October 2010 Submission: January 2010 Hearing: April 2011 Inspectors Report: July 2011 Adoption: September 2011
Review Proposals	The Annual Monitoring Report will assess the effectiveness of policies and proposals and implementation.
Notes	The Area Action Plan is one part of the spatial masterplan for the Great Yarmouth and Lowestoft Urban Regeneration Company 1st East.

Lake Lothing and Outer Harbour Area Action Plan Boundary



Document title	Gypsy and Traveller Site Specific Allocations
Subject matter	Allocates land for Gypsy and Traveller accommodation and Travelling Showpeople accommodation in accordance with Policy CS12 of the Waveney Core Strategy
Geographical area	Waveney District excluding the Broads Authority Area
DP or not DP	Development Plan
Background Studies	As for Core Strategy, plus Landscape Character Assessment, Water Cycle Study; Updated Gypsy and Traveller+ Travelling Showpeople Accommodation Needs Assessment
Responsible Authority for preparation	Waveney District Council
Timetable	Issues and Options: Feb 2012 Preferred Sites: Aug 2012 Publication (final draft of DPD): Nov 2012 Submission: Feb 2013 Hearing: May 2013 Inspectors Report: August 2013 Adoption: September 2013
Review Proposals	The Annual Monitoring Report will assess the effectiveness of policies and proposals and implementation.
Notes	The Gypsy and Traveller Site Specific Allocations will be accompanied by a Sustainability Appraisal. The DPD will allocate land for the period 2011 to 2021 based on the findings of the updated needs assessment. Provision up until 2011 will be delivered through the development management system in accordance with Policy CS12 of the Waveney Core Strategy.

Appendix 2

List of Saved Policies from the Waveney Local Plan Adopted November 1996 and the Suffolk Structure Plan June 2001

The list below contains all of the current policies in the Waveney Local Plan (adopted November 1996), i.e. all those that have continued to be “saved “ beyond September 2007. All adopted policies were automatically “saved” for a period of three years from the 28th September 2004. In 2007 the Council applied to the Secretary of State in order to retain certain policies with which to control development beyond 27th September 2007. The Secretary of State has allowed the Council to save a number of adopted policies until they are eventually replaced with local development framework documents. The policies which are retained continue to be used during the consideration of planning applications, while those policies that were not saved beyond 27th September 2007 ceased to be used for Development Control decision making after this date.

The Adoption of the Core Strategy has meant a number of the ‘saved’ policies have already been replaced. These policies are detailed in Appendix 2 of the Adopted Core Strategy. Ultimately all of the adopted Local Plan policies will be either deleted or superseded by policies within the subsequent development plan documents to be produced. In the list below the Council have identified the ultimate fate of each policy, whether it will be deleted or replaced. If the latter, then the Development Plan Document that is likely to replace the policy has also been identified. There may not be a direct set replacement policy in the new documents.

(Notes: R = to be replaced, ALL = Site Specific Allocations, DM = Development Management policies, AAP = Area Action Plan)

Policy number and subject		Ultimate fate
Environment		
ENV1	Areas of Outstanding Natural Beauty and Heritage Coast	R/DM
ENV2	Special Landscape Area	R/DM
ENV4	Strategic Gaps	R/DM
ENV11	Common Land and Village Greens	R/DM
ENV15	Coastal Erosion Risk Zone	R/DM
ENV20	Conservation Areas	R/DM
ENV21	Demolition of Unlisted Buildings in Conservation Areas	R/DM
ENV22	Alterations to Listed Buildings	R/DM
ENV23	Setting of Listed Buildings	R/DM
ENV24	Conversion of Listed Buildings	R/DM
ENV25	Demolition of Listed Buildings	R/DM
ENV26	Shopfront/Fascia Design in Conservation Areas	R/DM
ENV27	Illuminated Advertisements in Conservation Areas and on Listed Buildings	R/DM
ENV28	Illuminated Advertisements	R/DM
ENV29	Advertisement Signs & Shop Fronts Importance	R/DM
ENV32	Sites of Regional and Local Archaeological Importance	R /DM

Housing

H2	More Homes and a Better Environment	R/ALL
H4	Affordable Housing	R/DM
H5	Adaptable/Accessible Housing	R/DM
H6	Housing Allocations	R/ALL
H7	Urban Consolidation / Infilling	R/DM
H8	Residential Design Guidelines	R/DM
H9	Redevelopment of Larger Properties and Private Gardens	R/DM
H10	Backland Development	R/DM
H12	Conversion of Existing Properties to Self Contained Flats	R/DM
H13	Conversion of Existing Properties to Houses in Multiple Occupation	R/DM
H14	Areas where Conversion to HMOs or Self-Contained Flats Resisted	R/DM
H16	Sheltered Housing Schemes, Nursing Homes/Residential Care Homes	R/DM
H17	Extensions to Residential Care Homes and Nursing Homes	R/DM
H18	Extensions to Dwellings	R/DM
H19	Mobile Homes	R/DM
H20	Replacement Dwellings in the Countryside	R/DM
H21	Extensions to Dwellings in the Countryside	R/DM

Industry and Employment

E1	Industrial Land Allocations	R/ALL/AAP
E2	Existing Industrial Areas and Adjacent Sites	R/DM
E3	Existing and New Businesses	R/DM
E7	Working from Home	R/DM
E8	Hazardous Development	R/DM
E9	Design and Layout of Industrial Development	R /DM

Communications

TR1	Major Road Schemes - Safeguard of Routes	R/DM
TR3	Lorry Parks	R/DM
TR4	Roadside Facilities	R/DM
TR5	Highway Access	R/DM
TR14	Retention of Existing Footpaths	R/DM

Shopping and Town Centres

SHO2	Town Centres	R/DM
SHO5	Local Neighbourhood Shops	R/DM
SHO6	Village Shops	R/DM
SHO7	Garden Centres	R/DM
SHO8	Farm Shops	R/DM

Recreation and Open Space

OS6	Recreation Facilities	R/DM
-----	-----------------------	------

OS8	Small Scale Recreation Facilities in the Countryside	R/DM
OS9	Large Scale Recreation Facilities in the Countryside	R/DM
Tourism		
TM3	Tourism in North Denes / Sparrows Nest Area	R/DM
TM5	Tourism in the South Beach Area of Lowestoft	R/DM
TM6	Tourism Uses - Western End of Lake Lothing	R/AAP
TM9	Conversion to Guest House Use in Lowestoft	R/DM
TM11	Small Scale Caravan / Camping Sites	R/DM
TM13	Static Caravan, Chalet and Cabin Sites	R/DM
TM14	Redevelopment of Existing Holiday Accommodation	R/DM
Community Facilities		
CF1	School Sites	R/ALL/DM
CF4	New Community Facilities	R/DM
CF7	Electricity Overhead Lines	R/DM
CF9	Satellite Dishes	R/DM
Villages and Rural Areas		
V1	Limits to Development	R/DM
V3	Infill Developments	R/DM
V4	Low Cost Housing in Rural Areas	R/DM
V6	Conversion of Rural Buildings	R/DM
V7	Horse Related Development	R/DM
V10	Agricultural Development	R/DM
V11	Intensive Livestock Units	R/DM
Lowestoft		
LOW1	Open Break - Gunton	R/DM
LOW2	Open Break - Carlton Colville	R/DM
LOW3	Traditional Buildings Associated with the Fishing Industry	R/DM
LOW4	Town Centre & Secondary Shopping Centres	R/DM
LOW5	Primary Retail Area	R/DM
LOW6	Predominately Office Area	R/DM
LOW8	London Road South Shopping Core	R/DM
LOW9	London Road South Conversions to Residential	R/DM
Beccles		
BEC1	Pedestrianisation / Pedestrian Priority Areas	R/ALL
BEC2	Extensions to Car Parks	R/ALL
BEC3	Environmental Enhancement, Old Market	R/ALL
BEC4	Beccles Maltings	R/ALL
Halesworth		
HAL2	Retail Development, rear of Thoroughfare	R/ALL
HAL3	Community Centre, off Thoroughfare	R/ALL
Southwold		
S1	Limits to Development	R/DM

S5	Area for New Moorings	R/DM
S6	Replacement Moorings	R/DM
S7	Huts at Southwold Harbour	R/DM
S8	The Common	R/DM

Kessingland

K1	Limits to Development	R/DM
K2	Setting of the Area of Outstanding Natural Beauty	R/DM

In addition the following Suffolk Structure Plan (June 2001) policies have been “saved” by the Secretary of State in order to control development beyond September 2007, until they are eventually replaced by one or more local development frameworks across the county. As with Local Plan policies, those which are retained can continue to be used during the consideration of planning applications, while those policies that were not saved beyond 27th September 2007 ceased to be used for Development Control decision making after this date.

Policy number and subject

CS11	Defence base housing
ENV21	Norfolk and Suffolk Broads
ECON7	High Technology Development / Business Clusters
ECON11	Town and local centres and villages (4)
ECON14	Tourism
T10	Cycle Parking
T14	Control of Development
T16	Airfields
REC4	Waterborne Recreation

If you would like a copy or a summary of this document in an alternative language or format please ask an English speaking friend to contact us at the address below.

MANDARIN

如果您需要此文件的其它语言或格式的副本或摘要，请让一位说英文的朋友按照上述地址与我们联系。

HUNGARIAN

Ha a jelen dokumentum más nyelvű vagy formátumú változatára vagy kivonatára van szüksége, kérje meg egy angolul tudó barátját, hogy vegye fel velünk a kapcsolatot a fenti címen.

POLISH

Jeżeli są Państwo zainteresowani otrzymaniem kopii lub streszczenia niniejszego dokumentu w tłumaczeniu na język polski lub w innym formacie, prosimy zwrócić się do osoby z Państwa otoczenia posługującej się językiem angielskim, aby skontaktowała się z nami w tej sprawie pod widocznym powyżej adresem.

SLOVAK

Ak potrebujete kópiu alebo zhrnutie tohoto dokumentu v inom jazyku, alebo v inom formáte požiadajte prosím anglicky hovoriaceho priateľa/priateľku, aby nás kontaktovali na adrese uvedenej vyššie.

TURKISH

Bu dokümanın bir kopyasını ya da özetini alternatif bir dilde veya formatta isterseniz, lütfen İngilizce konuşan bir arkadaşınızdan yukarıdaki adresten bizimle iletişime geçmesini isteyiniz.

PORTUGUESE

Se pretender uma cópia ou um sumário deste documento num idioma ou formato alternativo, peça por favor a um(a) amigo(a) que fale inglês para nos contactar na morada acima indicada.

KURDISH SORANI

هه‌دامای وێت وێب مکیوێ یه‌که‌ی هه‌وێش هه‌ب نای مکیوێ یه‌که‌ی نهمز هه‌ب مگه‌ل هه‌ب مه‌ی هل که‌ی هه‌تروک نای که‌ی یه‌پۆک تێوه‌ته‌ر هه‌که‌ی له‌مگه‌ل هه‌وهره‌س یه‌نه‌ناش یه‌ن وان وه‌ی یه‌گه‌ی هل مکه‌ب اواده‌ تێنه‌ز ده‌ یه‌ی یه‌لگه‌ی یه‌ مکه‌ تۆخ یه‌که‌ی هه‌دارب هل هه‌ی که‌ت تێه‌ر که‌ب ت.ا که‌ب یه‌نه‌ی هه‌ی هه‌ی مه‌ی

LITHUANIAN

Jei jums reikia šio dokumento kopijos ar santraukos kita kalba ar kitu formatu, paprašykite angliškai kalbančio draugo/draugės, kad jis/ji susisiektų su mumis aukščiau pateiktu adresu.

Waveney District Council
Planning Policy Team
Town Hall
High Street
Lowestoft
Suffolk
NR32 1HS

Tel: 01502 523029
Email: planningpolicy@waveney.gov.uk