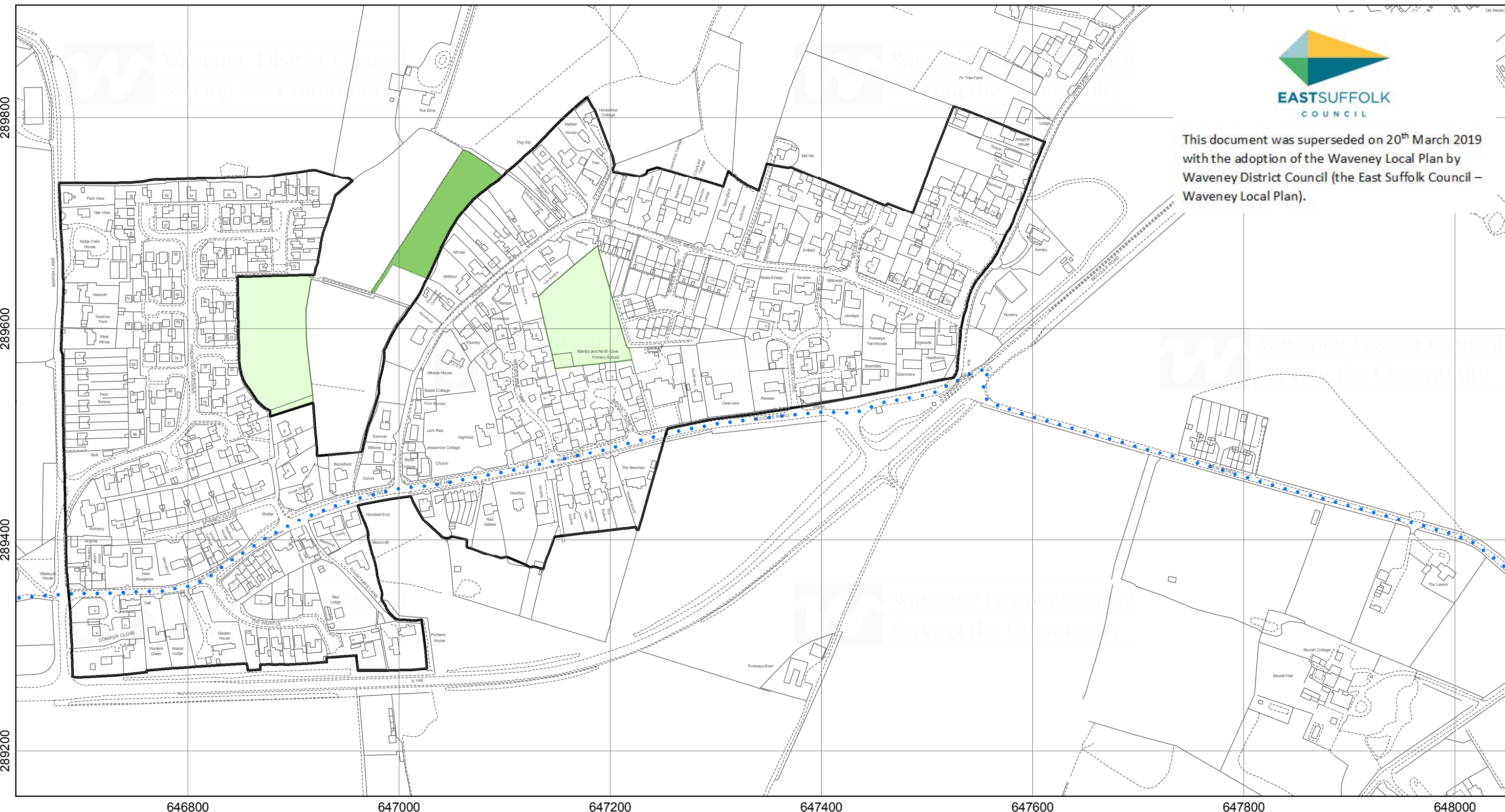




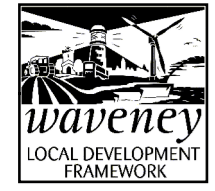
This document was superseded on 20<sup>th</sup> March 2019 with the adoption of the Waveney Local Plan by Waveney District Council (the East Suffolk Council – Waveney Local Plan).



Physical Limits (DM01)
  Allotments (DM25)
  Open Space (DM25) (over 0.25ha)
 ..... Regional Cycle Route

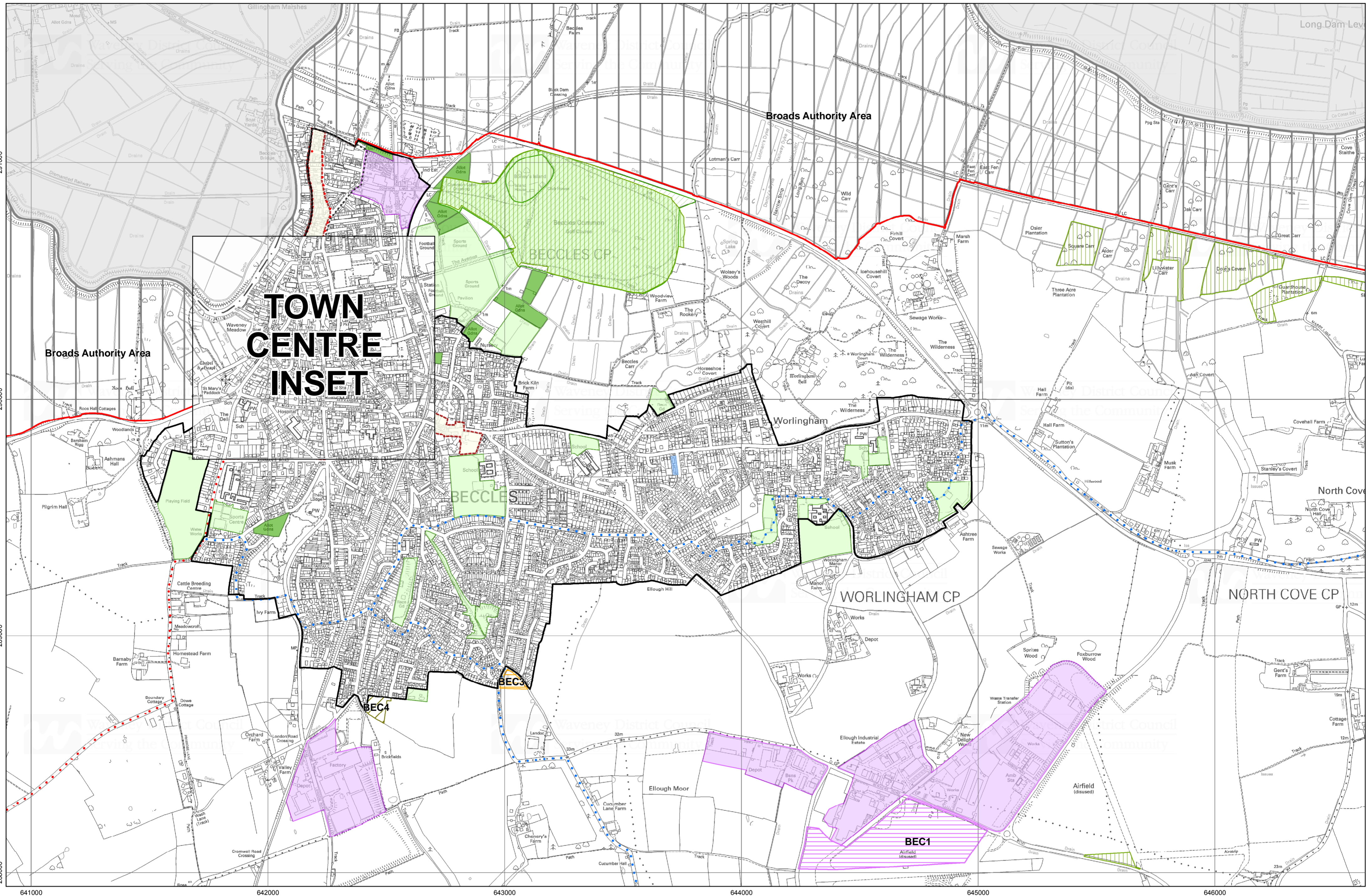
Policy references in the key preceded by 'DM' relate to the Development Management Policies.



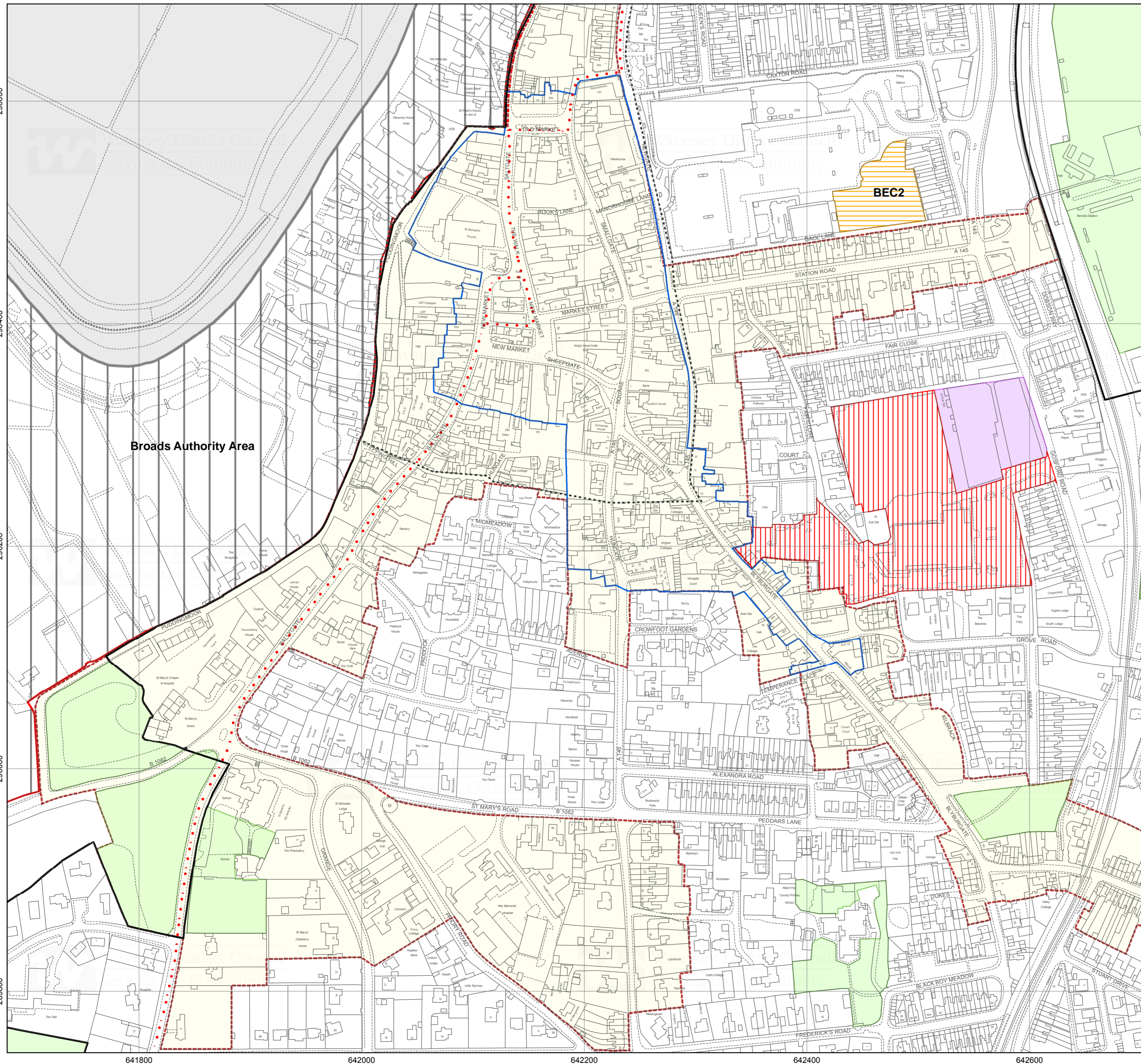


# Beccles Area Inset Map

January 2012 - To accompany the Local Development Framework Adopted Development Plan Documents (Core Strategy, Development Management Policies, Site Specific Allocations and Lowestoft Lake Lothing and Outer Harbour Area Action Plan)



## Beccles Town Centre Inset Map 1:2,500



- Local Development Framework Boundary
- Broads Authority Area
- Outside Waveney District
- Physical Limits (DM01)
- Existing Employment Area (DM08)
- Town Centre Boundary (DM10)
- Local Shopping Centre (DM14)
- Allotments (DM25)
- Open Space (DM25) (over 0.25ha)
- County Wildlife Site (DM29)
- Conservation Area (DM30)
- Archaeological Site of Regional Importance (DM31)
- Housing Allocation
- Industrial Allocation
- Proposed Allotments
- Planning Permission for Retail (including housing)
- Common Land and Village Green
- National Cycle Route
- Regional Cycle Route

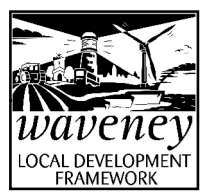
Policy references in the key preceded by 'DM' relate to the Development Management Policies. Allocations and proposed sites relate to the Site Specific Allocations.

At the time of publication, Suffolk County Council are seeking to identify through consultation a preferred route for the Beccles southern relief road.



Reproduced from the Ordnance Survey mapping with the permission of the Controller of Her Majesty's Stationery Office (c) Crown Copyright. Unauthorised reproduction infringes Crown copyright and may lead to prosecution or civil proceedings. Waveney District Council Licence No. 100042052, 2012. Flood zone information can be found on the Environment Agency website www.Environment-Agency.gov.uk/Flood. Minerals safeguarding areas can be found on the Suffolk County Council website http://www.Suffolk.gov.uk/Environment/MineralsandWastePlanning/MineralsPlanning. Source Information: Broads Authority - Broads Authority Area. Sustrans - National Cycle Route, Regional Cycle Route, Links to National Cycle Route. Suffolk County Council - Archaeological Site of Regional Importance, Common Land and Village Greens. Suffolk Biological Records Centre - County Wildlife Sites.

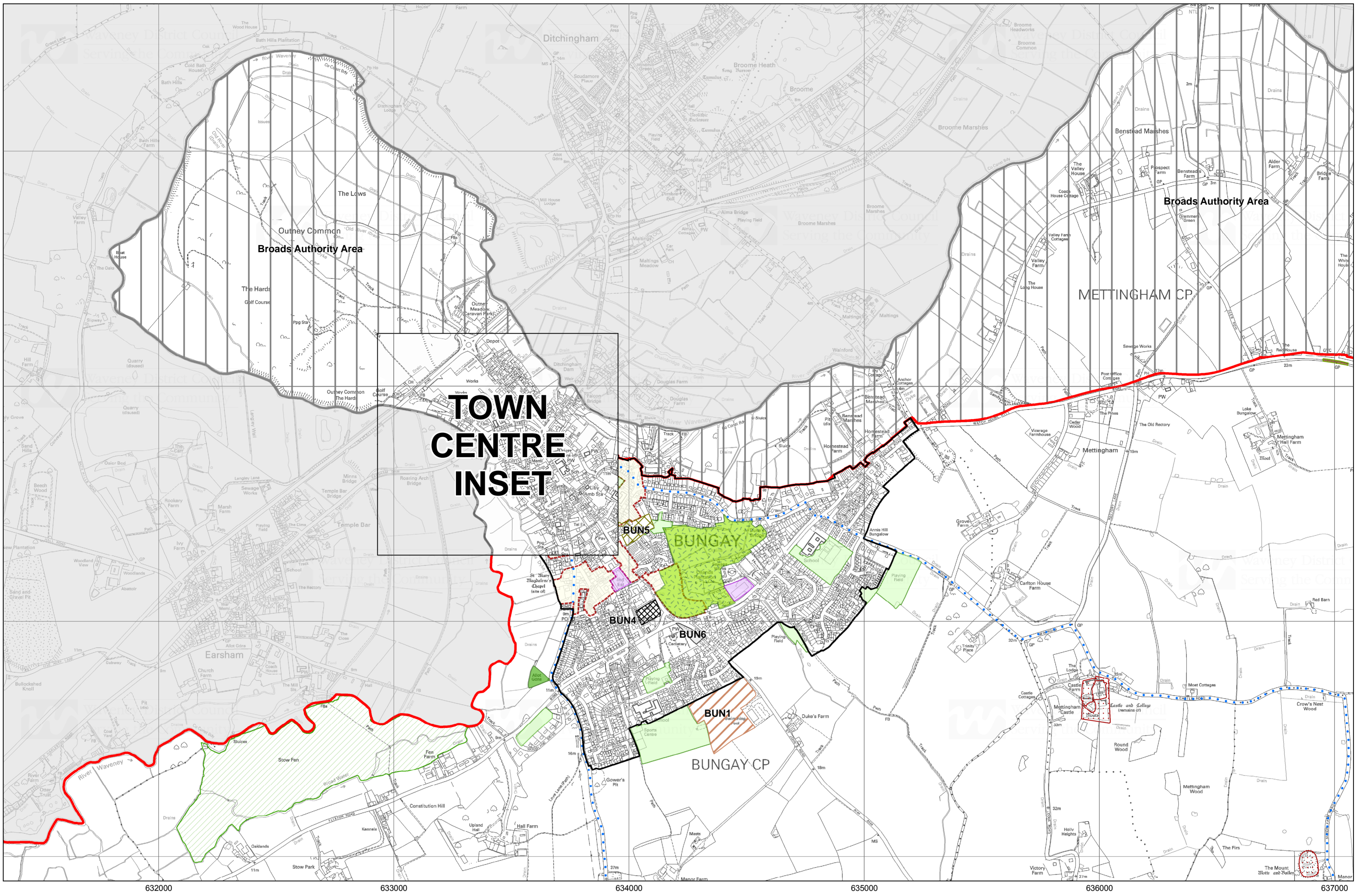




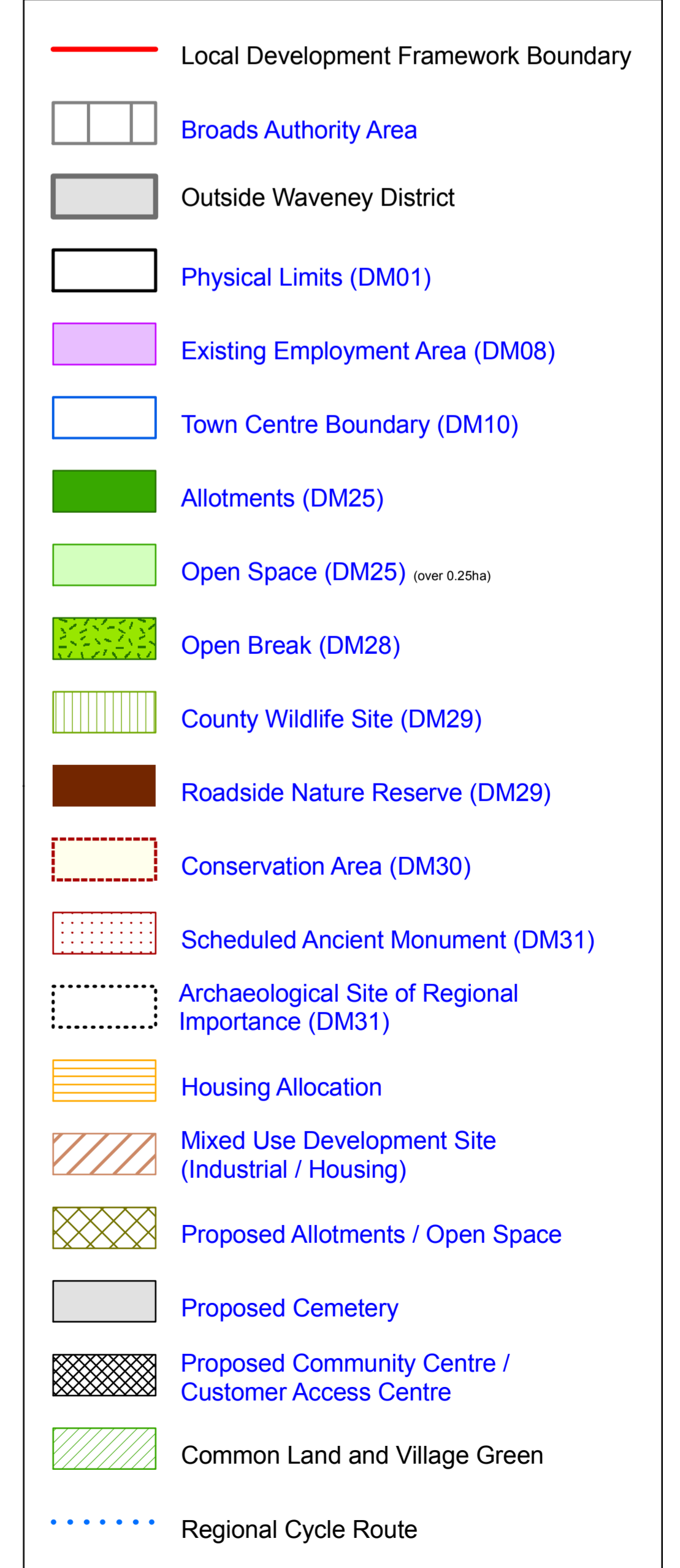
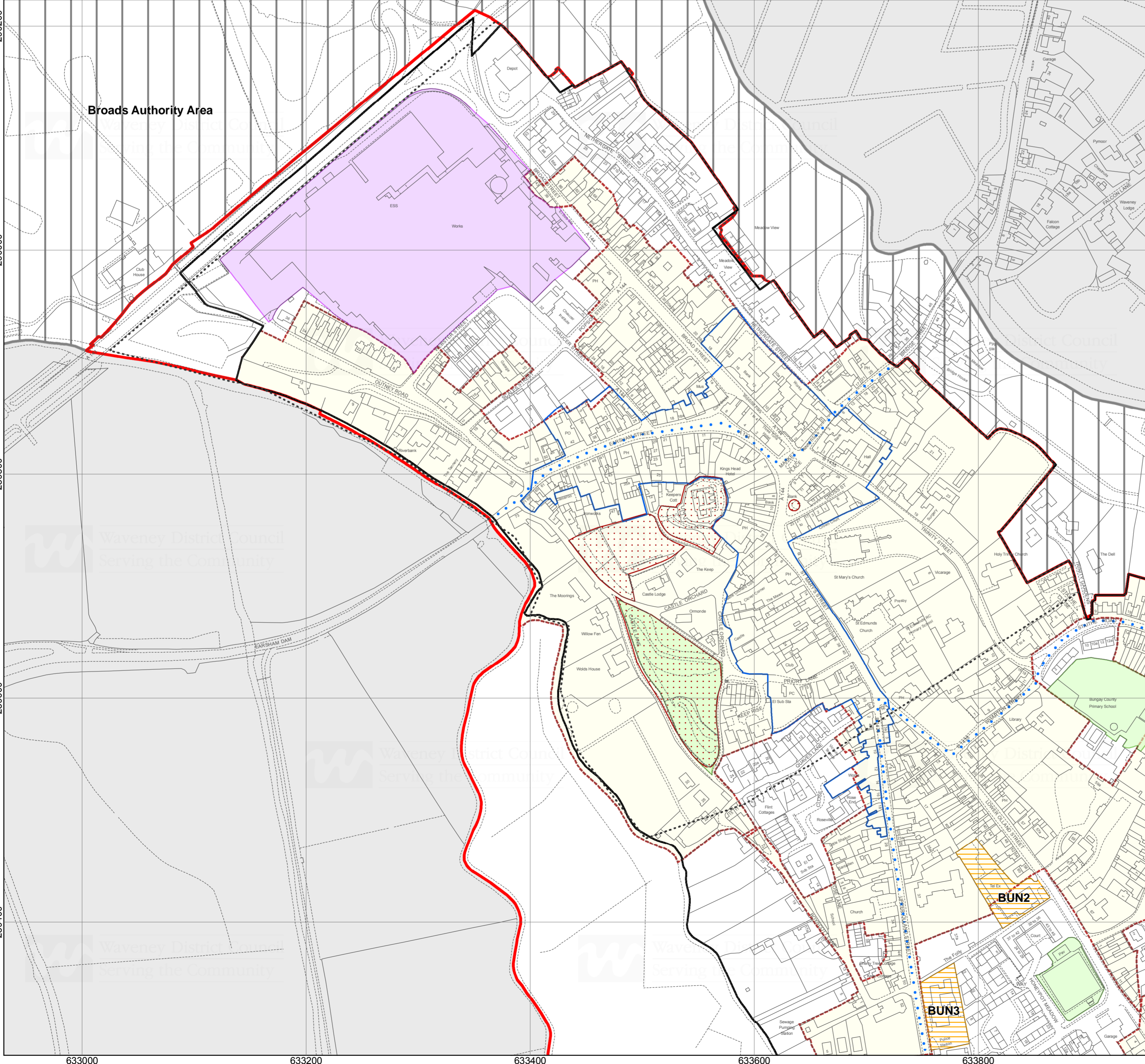
# Bungay Area Inset Map

Scale: 1:10,000

January 2012 - To accompany the Local Development Framework Adopted Development Plan Documents (Core Strategy, Development Management Policies, Site Specific Allocations and Lowestoft Lake Lothing and Outer Harbour Area Action Plan)



## Bungay Town Centre Inset Map 1:2,500



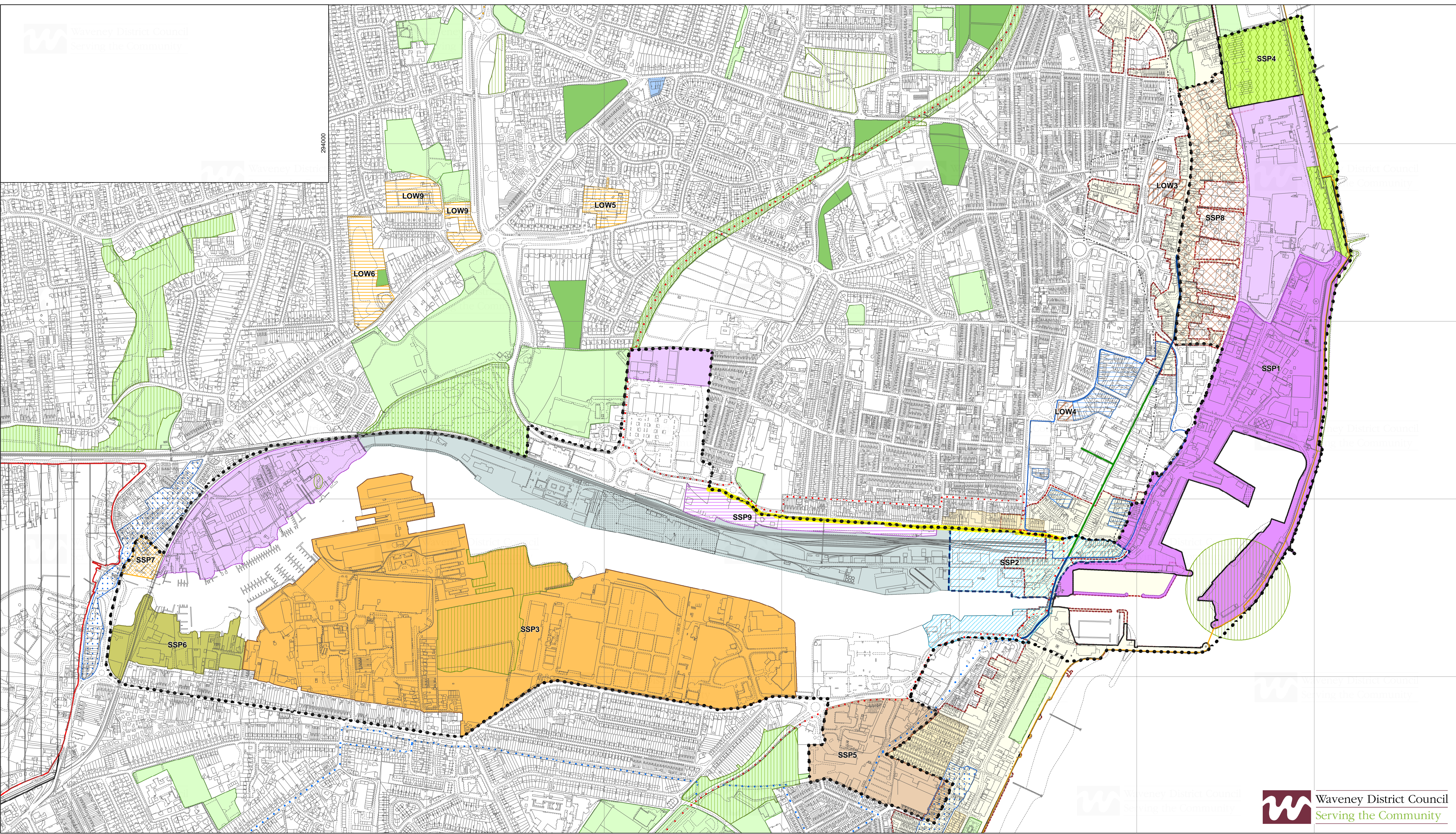
Policy references in the key preceded by 'DM' relate to the Development Management Policies. Allocations and proposed sites relate to the Site Specific Allocations.





# Central Lowestoft Area Inset Map N 1:5,000

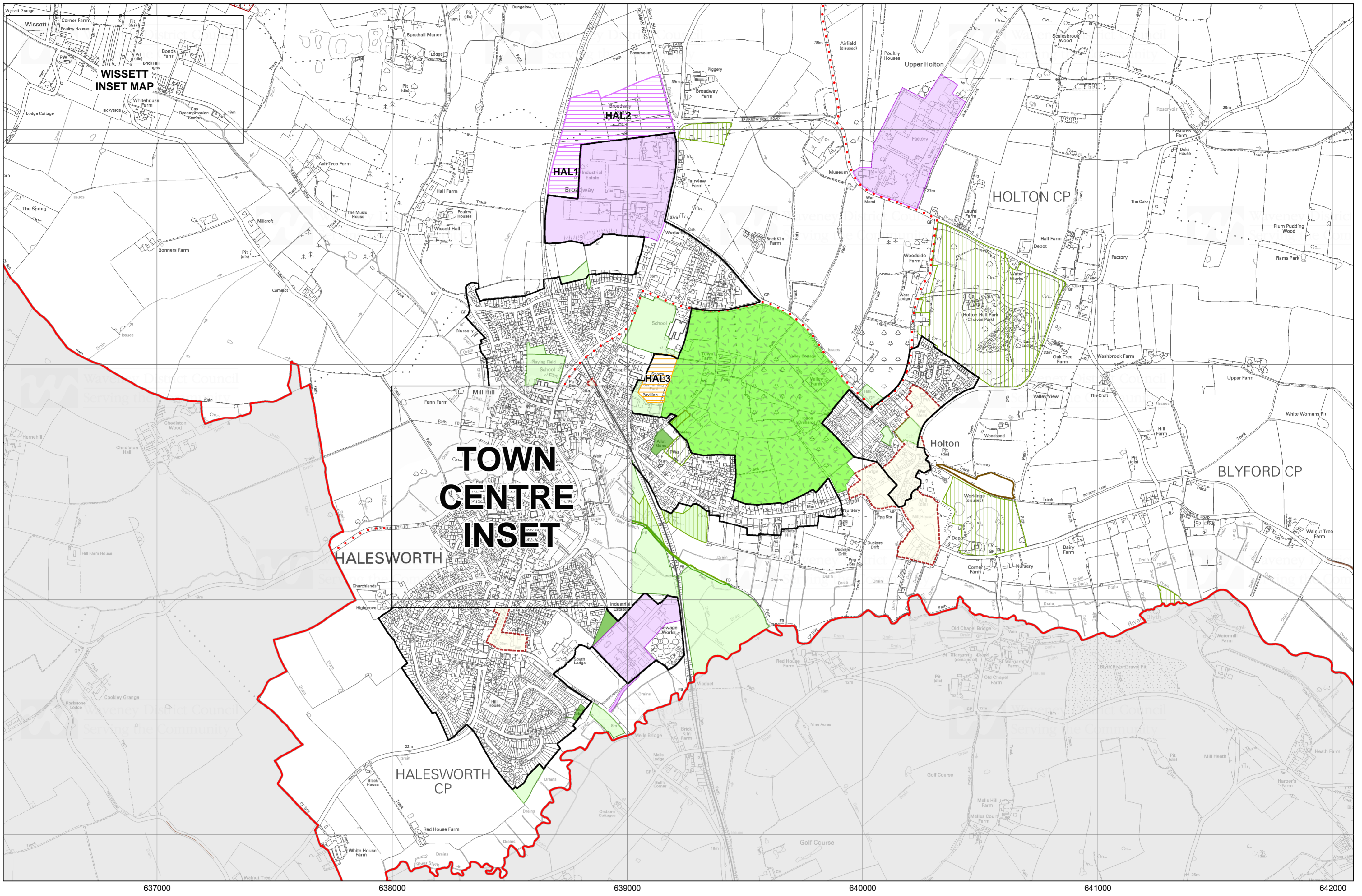
January 2012 - To accompany the Local Development Framework Adopted Development Plan Documents (Core Strategy - January 2009, Development Management Policies - January 2011, Site Specific Allocations - January 2011 and Lowestoft Lake Lothing and Outer Harbour Area Action Plan - January 2012)



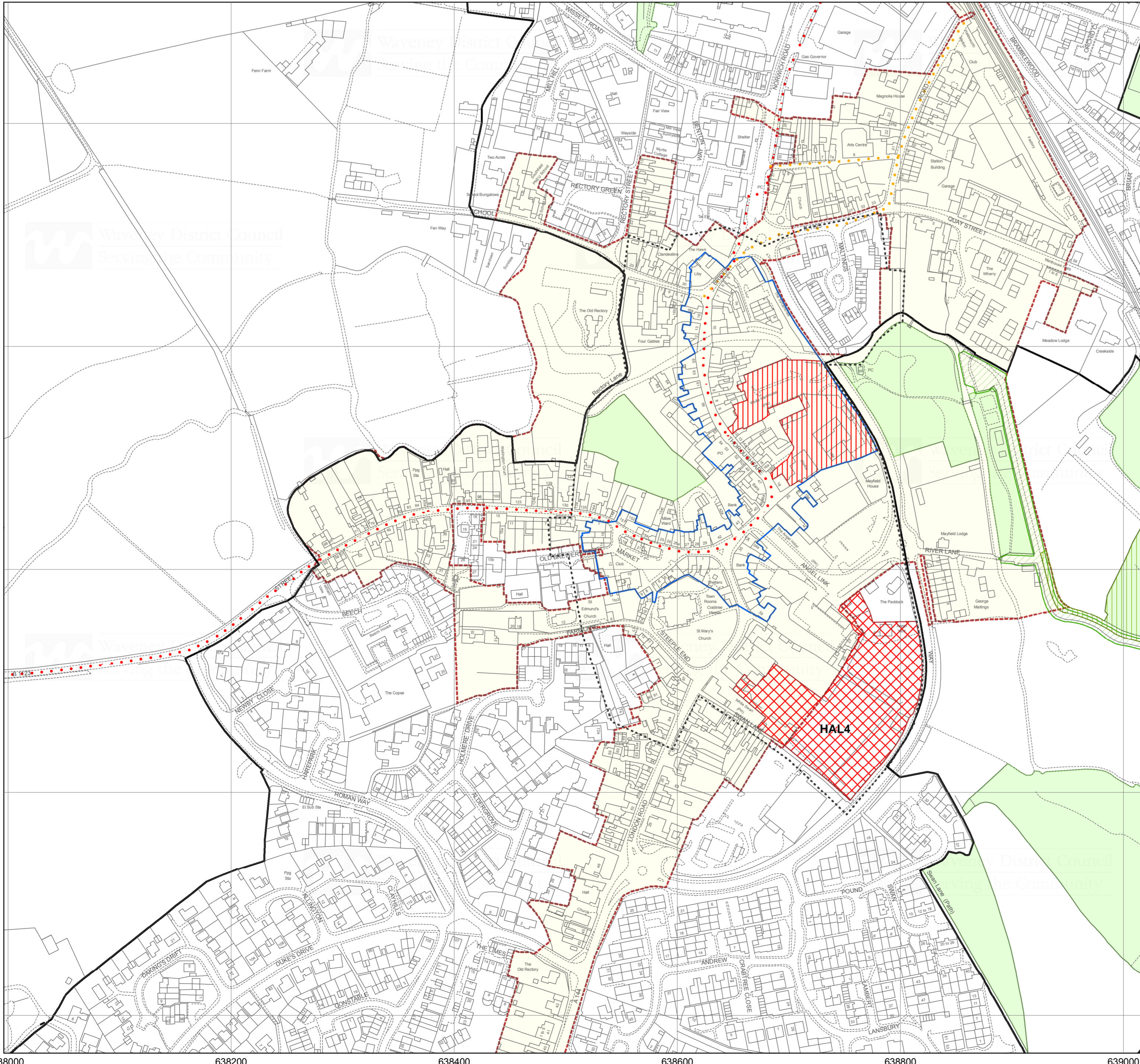
<b>Core Strategy</b>	Conservation Area (EHC2)	Proposed East of England Park (SSP4)	<b>Development Management Policies</b>	District Shopping Area (DM13)	Conservation Area (DM30)	Local Development Framework Boundary
Lake Lothing and Outer Harbour Area Action Plan (CS05)	Open Space (EHC3) (over 0.25ha)	Proposed Housing, Employment and Community Facilities (SSP5)	Physical Limits (DM01)	Local Shopping Centre (DM14)	Historic Park and Garden (DM30)	Broads Authority Area
<b>Lowestoft Lake Lothing and Outer Harbour Area Action Plan</b>	County Wildlife Site (EHC4)	Proposed Mixed Use Regeneration (SSP6)	Coastal Change Management Area (DM06)	Self Contained Flat Saturation Area (DM19)	Archaeological Site of Regional Importance (DM31)	National Cycle Route
Existing Employment Area (EMP1)	Local Nature Reserve (EHC4)	Proposed Housing and Community Facilities (SSP7)	Town Centre Boundary (DM10)	Allotments (DM25)	Links to National Cycle Routes	Regional Cycle Route
Retained Port Related Employment (EMP4)	Proposed Energy Related Employment (SSP1)	Proposed Mixed Use Regeneration and Enhancement (SSP8)	Core Shopping Street (DM11)	Open Space (DM25) (over 0.25ha)	<b>Site Specific Allocations</b>	Wharf Protection Site
Town Centre Expansion (RLT1)	Proposed Retail, Leisure, Tourism and Port Related Activities (SSP2)	Proposed Employment (SSP9)	Main Shopping Street (DM11)	County Wildlife Site (DM29)	Housing Allocation (LOW5, LOW6, LOW9)	Suffolk County Council Minerals Core Strategy Development Plan Document, Adopted September 2008
	Proposed Housing, Industrial and Community Facilities (SSP3)	Denmark Road Improvement	Town Centre Office Area (DM12)	Local Nature Reserve (DM29)	Mixed Use Development Site (LOW3, LOW4)	

Reproduced from the Ordnance Survey mapping with the permission of the Controller of Her Majesty's Stationery Office (c) Crown Copyright. Unauthorised reproduction infringes Crown copyright and may lead to prosecution or civil proceedings. Waveney District Council Licence No. 100042052, 2012. Flood zone information can be found on the Environment Agency website www.EnvironmentAgency.gov.uk/Flood. Minerals safeguarding areas can be found on the Suffolk County Council website http://www.Suffolk.gov.uk/Environment/MineralsandWaste/Planning/MineralsPlanning. Source Information: Broads Authority - Broads Authority Area, English Heritage - Historic Parks and Gardens, Natural England - Local Nature Reserve, Suffolk Biological Records Centre - County Wildlife Sites, Suffolk County Council - Existing Wharf Site, Archaeological Site of Regional Importance, Sustrans - National Cycle Route, Links to National Cycle Routes, Regional Cycle Routes.





## Halesworth Town Centre Inset Map 1:2,500



- Local Development Framework Boundary
- Outside Waveney District
- Physical Limits (DM01)
- Existing Employment Area (DM08)
- Town Centre Boundary (DM10)
- Allotments (DM25)
- Open Space (DM25) (over 0.25ha)
- Strategic Gap (DM28)
- County Wildlife Site (DM29)
- Roadside Nature Reserve (DM29)
- Conservation Area (DM30)
- Scheduled Ancient Monument (DM31)
- Archaeological Site of Regional Importance (DM31)
- Housing Allocation
- Industrial Allocation
- Proposed Housing & Community Use
- Planning Permission for Retail
- Common Land and Village Green
- Site of Special Scientific Interest
- National Cycle Route
- Links to National Cycle Routes

Policy references in the key preceded by 'DM' relate to the Development Management Policies. Allocations and proposed sites relate to the Site Specific Allocations.