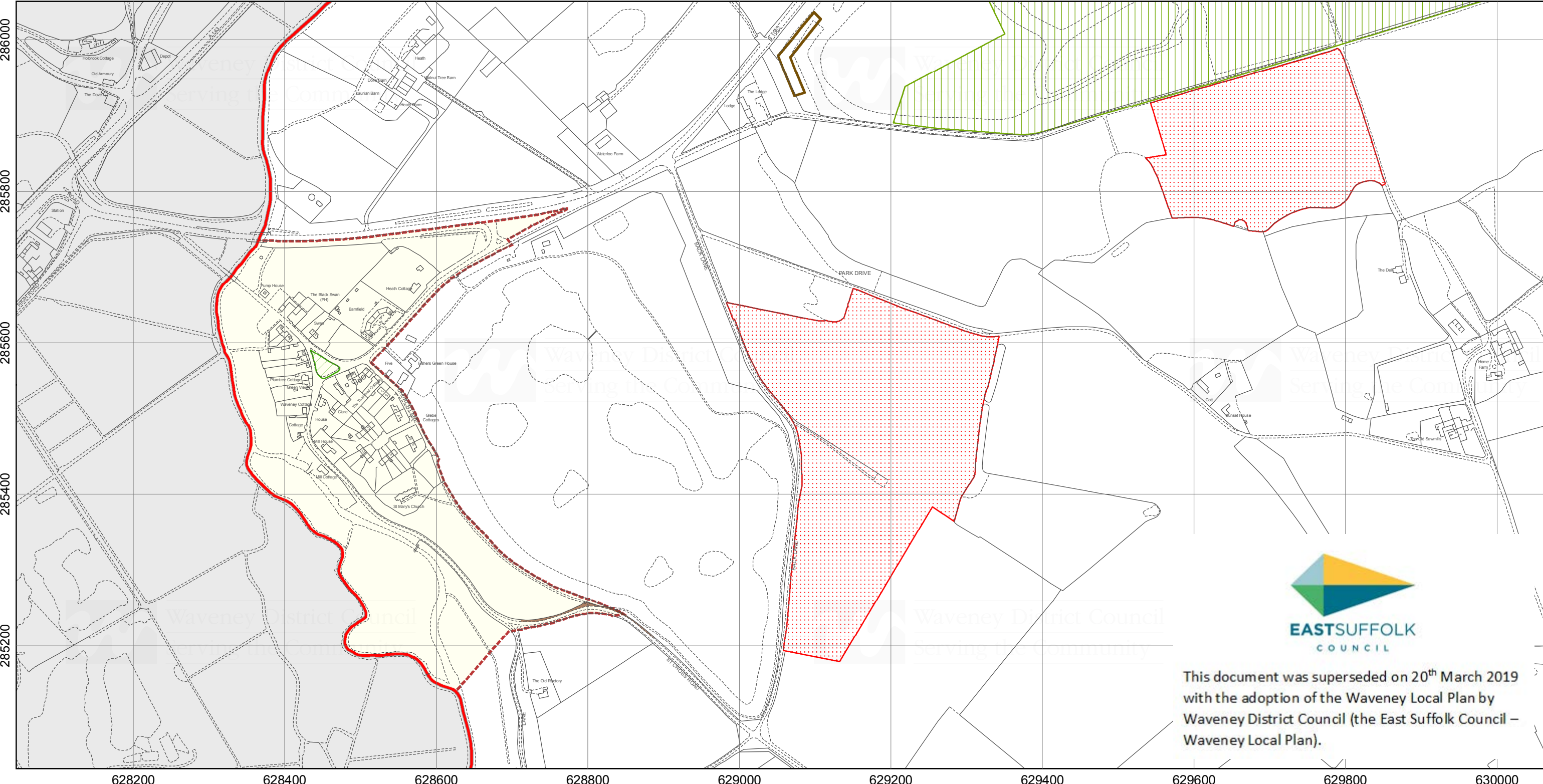








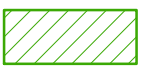
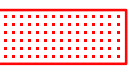



Homersfield Inset Map

1:5,000

January 2012 - To accompany the Local Development Framework Adopted Development Plan Documents (Core Strategy, Development Management Policies, Site Specific Allocations and Lowestoft Lake Lothing and Outer Harbour Area Action Plan)

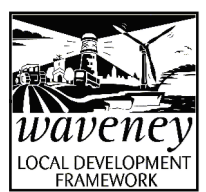


This document was superseded on 20th March 2019 with the adoption of the Waveney Local Plan by Waveney District Council (the East Suffolk Council – Waveney Local Plan).

| | | |
|--|---|--|
|  Local Development Framework Boundary |  Conservation Area (DM30) |  Roadside Nature Reserve (DM29) |
|  Outside Waveney District |  Common Land and Village Green |  Minerals Site Allocations <small>Suffolk County Council Minerals Specific Site Allocation Development Plan Document, Adopted September 2009</small> |
|  County Wildlife Site (DM29) |  Site of Special Scientific Interest |  Waveney District Council Serving the Community |

Policy references in the key preceded by 'DM' relate to the Development Management Policies.

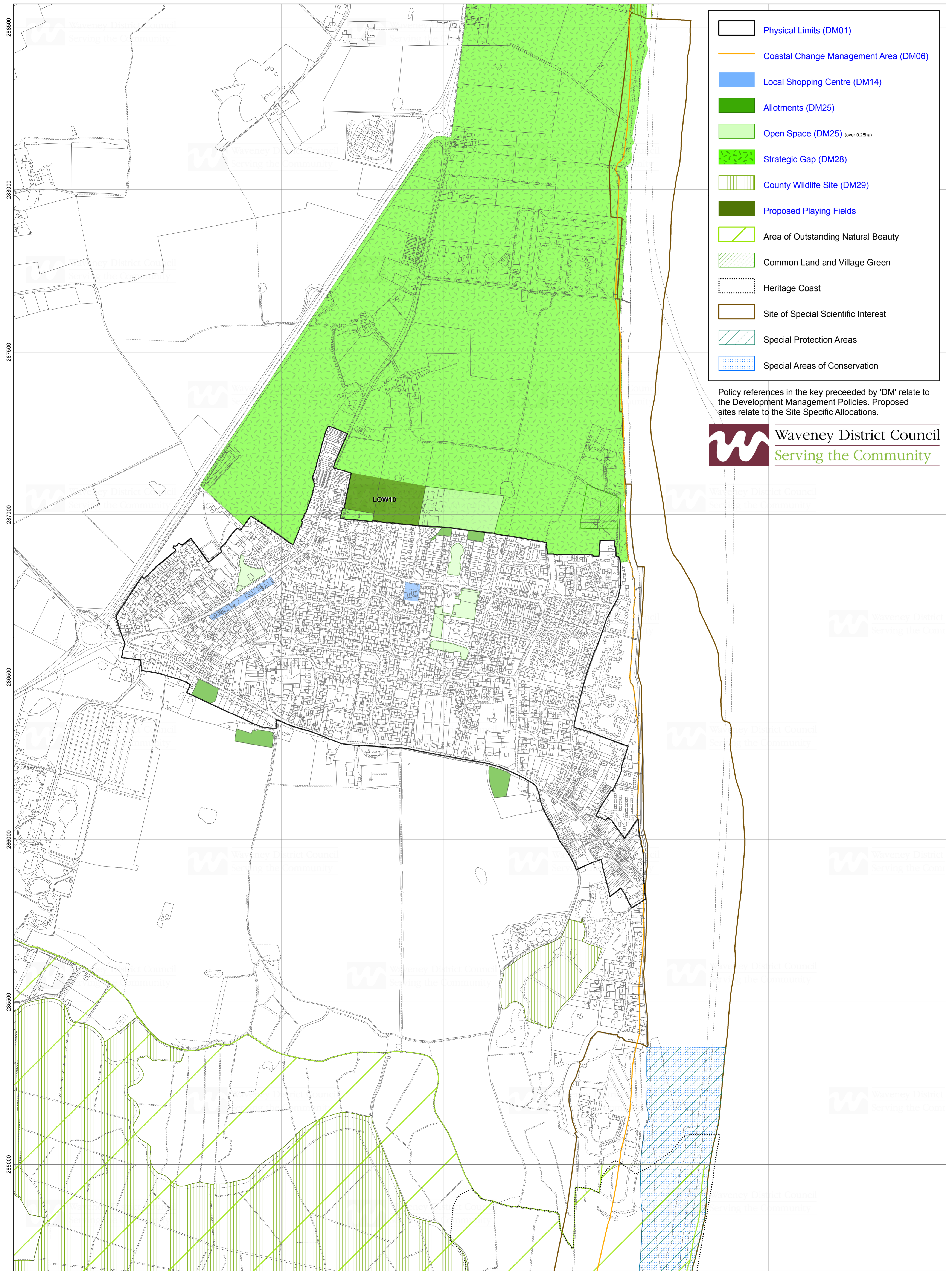
Reproduced from the Ordnance Survey mapping with the permission of the Controller of Her Majesty's Stationery Office (c) Crown Copyright. Unauthorised reproduction infringes Crown copyright and may lead to prosecution or civil proceedings. Waveney District Council Licence No. 100042052, 2012. Flood zone information can be found on the Environment Agency website www.Environment-Agency.gov.uk/Flood. Minerals safeguarding areas can be found on the Suffolk County Council website <http://www.Suffolk.gov.uk/Environment/MineralsandWastePlanning/MineralsPlanning>
Source Information: Natural England – Site of Special Scientific Interest. Suffolk County Council – Common Land and Village Greens, Minerals Site Allocations (Minerals Site Specific Allocations Development Plan Document, September 2009). Suffolk Biological Records Centre – County Wildlife Sites.



Kessingland Area Inset Map

1:5,000

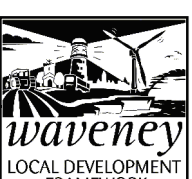
January 2012 - To accompany the Local Development Framework Adopted Development Plan Documents (Core Strategy, Development Management Policies, Site Specific Allocations and Lowestoft Lake Lothing and Outer Harbour Area Action Plan)



-  Physical Limits (DM01)
-  Coastal Change Management Area (DM06)
-  Local Shopping Centre (DM14)
-  Allotments (DM25)
-  Open Space (DM25) (over 0.25ha)
-  Strategic Gap (DM28)
-  County Wildlife Site (DM29)
-  Proposed Playing Fields
-  Area of Outstanding Natural Beauty
-  Common Land and Village Green
-  Heritage Coast
-  Site of Special Scientific Interest
-  Special Protection Areas
-  Special Areas of Conservation

Policy references in the key preceded by 'DM' relate to the Development Management Policies. Proposed sites relate to the Site Specific Allocations.

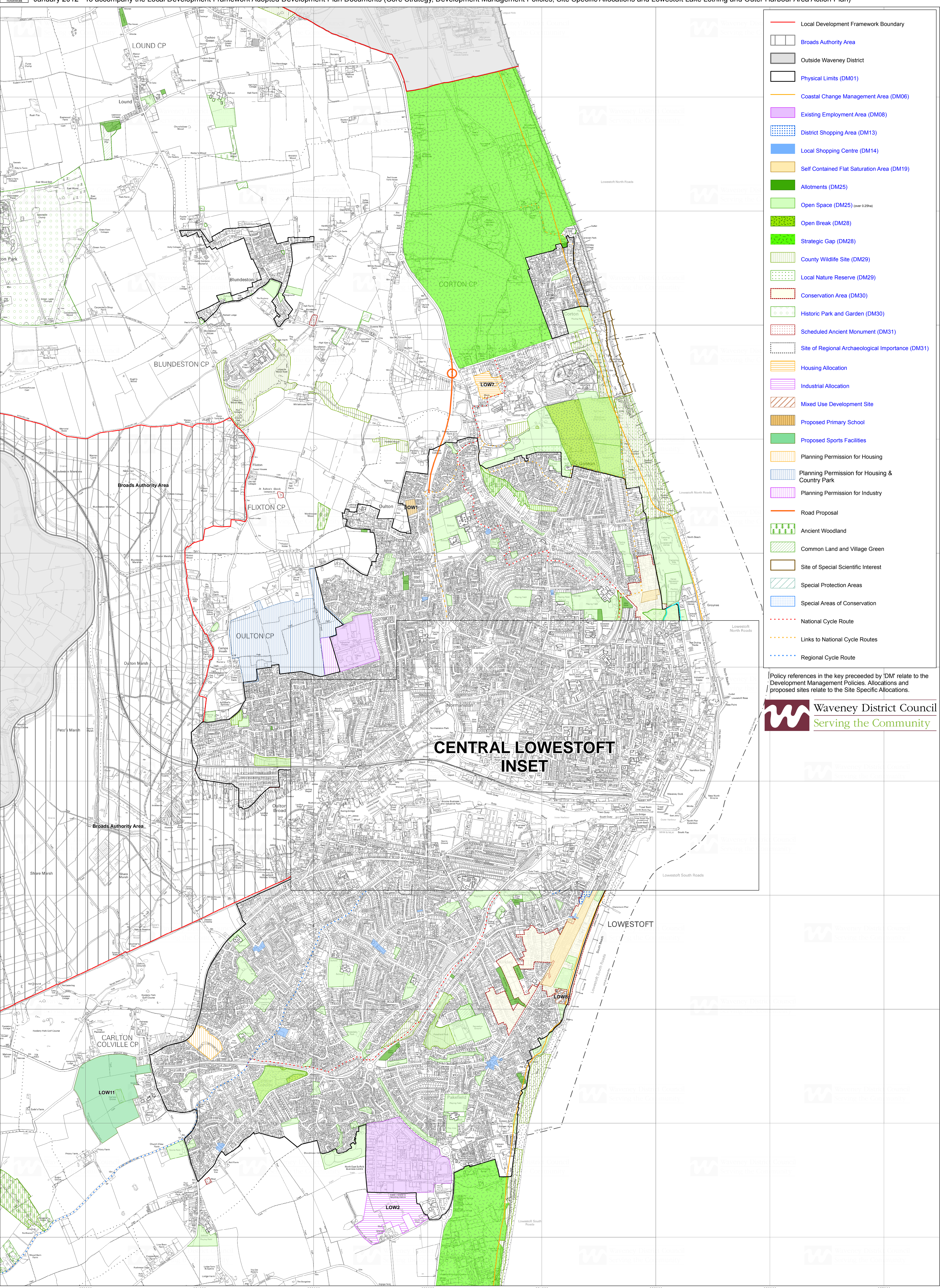




Lowestoft Area Inset Map

January 2012 - To accompany the Local Development Framework Adopted Development Plan Documents (Core Strategy, Development Management Policies, Site Specific Allocations and Lowestoft Lake Lothing and Outer Harbour Area Action Plan)

1:10,000



- Local Development Framework Boundary
- Broads Authority Area
- Outside Waveney District
- Physical Limits (DM01)
- Coastal Change Management Area (DM06)
- Existing Employment Area (DM08)
- District Shopping Area (DM13)
- Local Shopping Centre (DM14)
- Self Contained Flat Saturation Area (DM19)
- Allotments (DM25)
- Open Space (DM25) (over 0.25ha)
- Open Break (DM28)
- Strategic Gap (DM28)
- County Wildlife Site (DM29)
- Local Nature Reserve (DM29)
- Conservation Area (DM30)
- Historic Park and Garden (DM30)
- Scheduled Ancient Monument (DM31)
- Site of Regional Archaeological Importance (DM31)
- Housing Allocation
- Industrial Allocation
- Mixed Use Development Site
- Proposed Primary School
- Proposed Sports Facilities
- Planning Permission for Housing
- Planning Permission for Housing & Country Park
- Planning Permission for Industry
- Road Proposal
- Ancient Woodland
- Common Land and Village Green
- Site of Special Scientific Interest
- Special Protection Areas
- Special Areas of Conservation
- National Cycle Route
- Links to National Cycle Routes
- Regional Cycle Route

[Policy references in the key preceded by 'DM' relate to the Development Management Policies. Allocations and proposed sites relate to the Site Specific Allocations.]



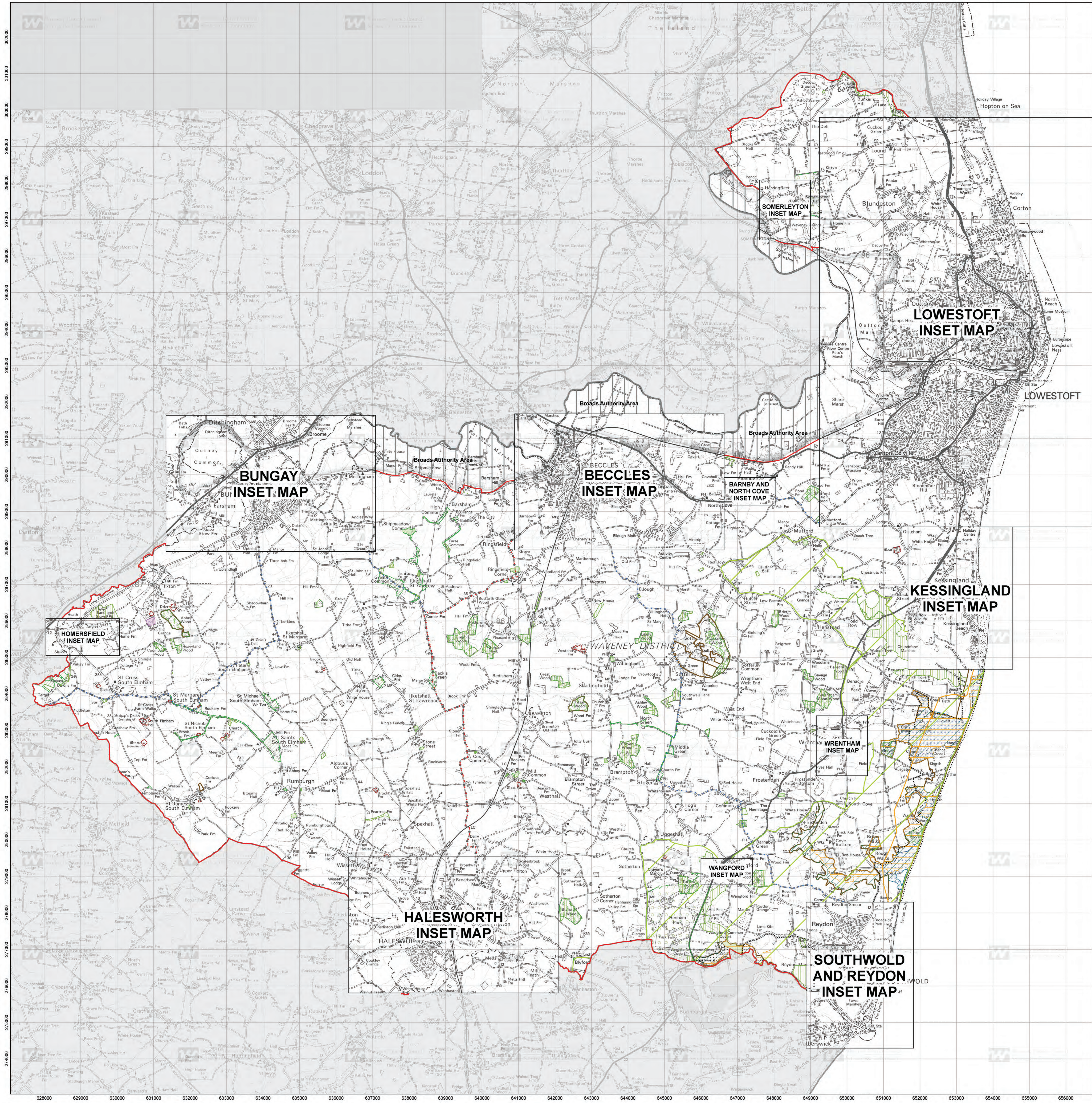
CENTRAL LOWESTOFT INSET



Proposals Map

January 2012 - To accompany the Local Development Framework Adopted Development Plan Documents (Core Strategy, Development Management Policies, Site Specific Allocations and Lowestoft Lake Lothing and Outer Harbour Area Action Plan)

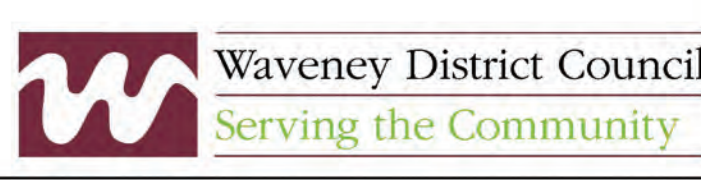
1:36,000

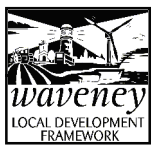


| | | | | |
|---------------------------------------|---------------------------------|------------------------------------|-------------------------------------|----------------------|
| Local Development Framework Boundary | Allotments (DM25) | Scheduled Ancient Monument (DM31) | National Nature Reserve | National Cycle Route |
| Broads Authority Area | Open Space (DM25) (over 0.25ha) | Ancient Woodland | Ramsar Site | Regional Cycle Route |
| Outside Waveney District | County Wildlife Site (DM29) | Area of Outstanding Natural Beauty | Site of Special Scientific Interest | |
| Coastal Change Management Area (DM06) | Roadside Nature Reserve (DM29) | Common Land and Village Green | Special Areas of Conservation | |
| Existing Employment Area (DM08) | Historic Park and Garden (DM30) | Heritage Coast | Special Protection Areas | |

Policy references in the key preceded by 'DM' relate to the Development Management Policies.

Reproduced from the Ordnance Survey mapping with the permission of the Controller of Her Majesty's Stationery Office © Crown Copyright. Unauthorised reproduction infringes Crown copyright and may lead to prosecution or civil proceedings. Waveney District Council Licence No. 10004892, 2012. Flood zone information can be found on the Environment Agency website www.environment-agency.gov.uk/flood. Minerals safeguarding areas can be found on the Suffolk County Council website http://www.suffolk.gov.uk/Environment/MineralsandWastePlanning/MineralsPlanning. Source information: Broads Authority - Broads Authority Area, Bustrans - National Cycle Route, Regional Cycle Route, Natural England - Ancient Woodland, Area of Outstanding Natural Beauty, Heritage Coast, National Nature Reserve, Ramsar Site, Sites of Special Scientific Interest, Special Areas of Conservation, Special Protection Areas, English Heritage - Historic Parks and Gardens, Scheduled Ancient Monuments, Suffolk County Council - Common Land and Village Green, Minerals Site Allocations (Minerals Site Specific Allocations Development Plan Document, September 2009), Roadside Nature Reserves, Suffolk Biological Records Centre - County Wildlife Site.





Somerleyton Inset Map



1:5,000

January 2012 - To accompany the Local Development Framework

Adopted Development Plan Documents (Core Strategy, Development Management Policies, Site Specific Allocations and Lowestoft Lake Lothing and Outer Harbour Area Action Plan)



| | | | |
|--|--------------------------------------|--|---------------------------------|
| | Local Development Framework Boundary | | Open Space (DM25) (over 0.25ha) |
| | Broads Authority Area | | Allotments (DM25) |
| | Historic Park and Garden (DM30) | | Conservation Area (DM30) |

Policy references in the key preceded by 'DM' relate to the Development Management Policies.

Reproduced from the Ordnance Survey mapping with the permission of the Controller of Her Majesty's Stationery Office (c) Crown Copyright. Unauthorised reproduction infringes Crown copyright and may lead to prosecution or civil proceedings. Waveney District Council Licence No. 100042052, 2012. Flood zone information can be found on the Environment Agency website www.Environment-Agency.gov.uk/Flood. Minerals safeguarding areas can be found on the Suffolk County Council website <http://www.Suffolk.gov.uk/Environment/MineralsandWastePlanning/MineralsPlanning> Source Information: Broads Authority – Broads Authority Area. English Heritage – Historic Parks and Gardens.

