



“Bringing Ideas to Life”

Community Partnership Annual Forum
25 March 2022

8 minutes to Start

[East Suffolk Community Partnerships - YouTube](#)



Steve Gallant, Chair Community Partnership Board

Welcome

“Bringing Ideas to Life”
Annual Forum 2022: Programme

9:30-9:40	Introduction and update on Community Partnerships
9:40-10:10	Keynote: “Partnerships and Parishes: Delivering for people and places”
10:25-11:25	Workshops and seminars: Session 1
11:25-12:00	Refreshments and Marketplace
12:00-1:00	Workshops and seminars: Session 2
1:00-2:00	Lunch and Marketplace

Community Partnership Ambitions



East Suffolk
Community
Partnerships
Bringing ideas to life



Embed the Community Partnerships as the place to do place-based partnership work



Establish a programme of activity to address the data-led priorities identified at East Suffolk and individual CP level



Establish the Community Partnership Board as a strategic forum to effectively and collaboratively problem solve key challenges for East Suffolk



Evidence high impact investment of both Community Partnership and Board funding



Hold a successful Partnership Forum annually to share good practice and lessons learned

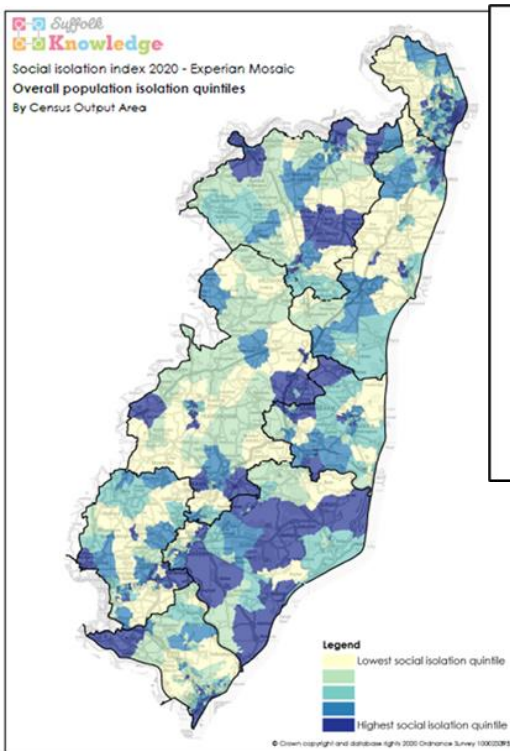
East Suffolk Community Partnerships

- Lowestoft & Northern Parishes
- Beccles, Bungay, Halesworth and Villages
- Carlton Colville, Kessingland, Southwold and Villages
- Framlingham, Wickham Market and Villages
- Aldeburgh, Laitton, Sæmundham and Villages
- Melton, Woodbridge and Deben Peninsula
- Kingreave, Rushmere St Andrew, Martlesham, Carlton & Fyne Valley
- Felixstowe Peninsula

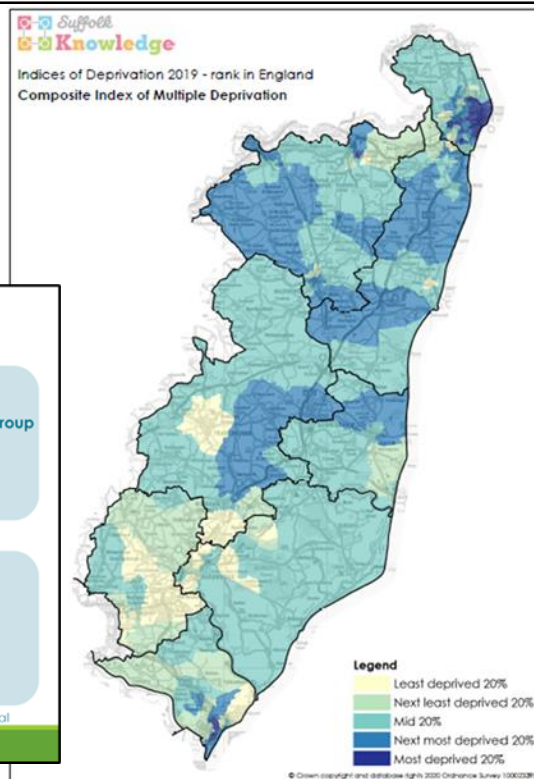
Community Partnerships - a Recap

- Community Partnerships set up late 2019
- Wide range of members: Town, Parish, District and County Councillors, Voluntary organisations, Community groups, Health (CCG's), Police, Youth Groups and more....
- Total budget of £60,000 per partnership to date
- Quarterly Community Partnership Board meetings
- Total Board budget of £750k to date

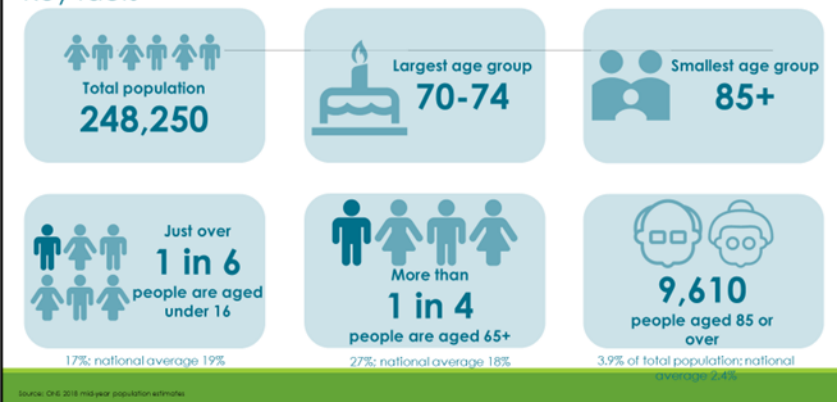




Beccles, Bungay & Halesworth Community Partnership profile



Population Key facts



**East Suffolk
Community
Partnerships**

Bringing ideas to life

Focus on what we know (data)

- New data packs being produced for each of the eight community partnerships
- Overarching new “East Suffolk Profile”
- Work undertaken by Suffolk County Council knowledge & Information Team



Focus on what local people know (insight)

- Workshops to set original priorities
three or four priorities per
Community Partnership
- Priorities refreshed each year
- Move back to face to face meetings
is enabling more creative 'problem
solving' workshops

East Suffolk Community Partnerships
Bringing ideas to life

Beccles, Bungay and Halesworth Community Partnership

Priority	Your Votes (tick your dots here!)
Supporting older people, particularly Over 85's	●●●●●
Helping people with dementia and their carers	●●●●●●●●●●
Supporting schools to achieve better results	●●●●●
Encouraging people to get more active	●●●●●●●
Helping children to maintain a healthy weight	●●●●●
Giving Looked After Children the best chance	●●●●●●●●●●
Helping those on low incomes	●●●●●●
Project to help people to heat their homes	●●●●●
Social isolation – older people and families	●●●●●●●●●●●●
Mental Health and Wellbeing	●●●●●●●●●●
Reducing the gap in life expectancy	●●●●●
Supporting local businesses	●●●●●
Access to services / lack of transport	●●●●●●●●●●●●●●●●●●●●●●
Your Idea: Youth Activities	●●●●●●●●●●●●●●●●●●●●●●
Your Idea: Play Areas	●●●●●●●●●●●●●●●●●●●●●●
Your Idea: County Lines and Gangs	●●●●●●●●●●●●●●●●●●●●●●
Your Idea: ASB	●●●●●●●●●●●●●●●●●●●●●●
Your Idea: Tree Foss	●●●●●●●●●●●●●●●●●●●●●●
Your Idea: Plastic pollution	●●●●●●●●●●●●●●●●●●●●●●
Your Idea: Air quality	●●●●●●●●●●●●●●●●●●●●●●

Community Partnership Board Priorities



Tackle Isolation & Loneliness



Transport & Travel



Mental Health & Wellbeing



Covid impact



Inequalities - focus on Financial Inequality



Peer Review: Recommendations

- Take time to reflect, review and reset the compass post covid
- Identify successes and impact, and celebrate what you have achieved
- Further engage with communities of interest like young people
- Improve communication between CPs and outwards within communities
- Transition back from virtual meetings to face-to-face facilitative problem solving
- Engage all stakeholders internal and external on the next steps for Community Partnerships.

Changes since our (virtual) Forum in 2020

- CP meetings up and running via Zoom (from mid-2020)
- Covid Impacts Task and Finish Group formed to oversee allocation of Board funding dedicated to enabling response and recovery
- Community Partnership structure enabled Covid response in our communities
- Great examples of delivery on the ground
- LGA Peer Challenge of Community Partnerships in October 2021 – Action Plan developed
- Two new Board Task and Finish Groups – Mental Health and Wellbeing and Tackling Inequalities





Jonathan Owen

Chief Executive, NALC



“Bringing Ideas to Life” Workshops and Seminars

Community Partnership Annual Forum
25 March 2022



“Bringing Ideas to Life”

SUPPORTED BY:



Community Partnership Annual Forum 25 March 2022



East Suffolk
Community
Partnerships
Bringing ideas to life