

# Felixstowe Peninsula Community Partnership profile

2022 update



# Population

## Key facts



Total population

**34,350**



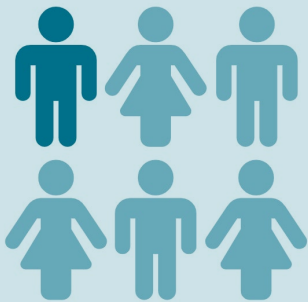
Largest age group

**70-74**



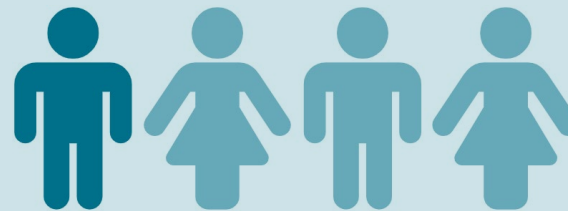
Smallest age group

**80-84**



Just under  
**1 in 6**  
people are aged  
under 16

15.5%; national average 18.9%



More than  
**1 in 4**  
people are aged 65+

29.2%; national average 18.7%



**1,480**  
people aged 85 or  
over

4.3% of total population; national  
average 2.5%

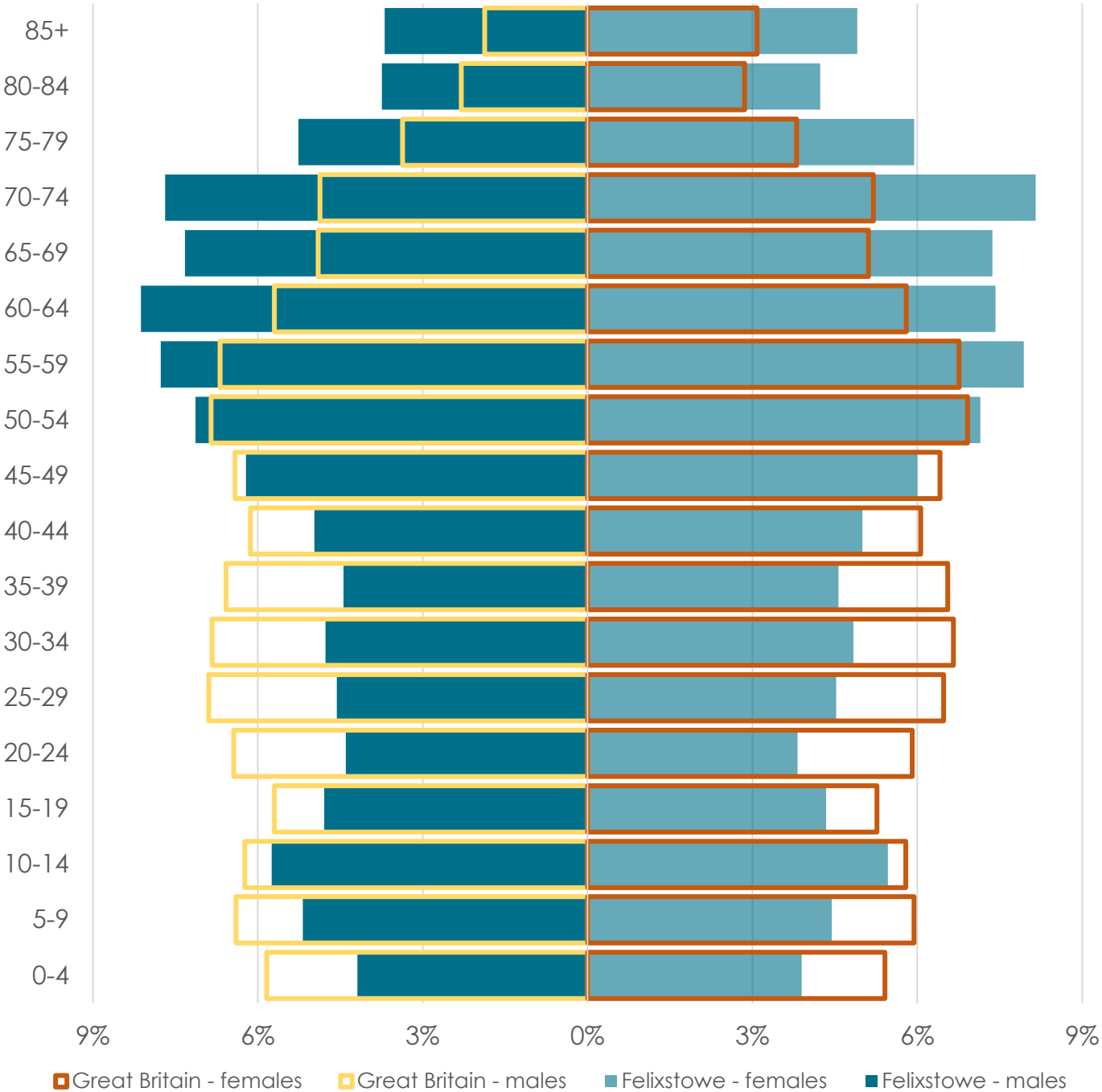
# Population

## Age breakdown

The age pyramid shows the age breakdown of the population of Felixstowe Pensinula against the national average

Most over-represented age group: **85+**  
Most under-represented age group: **20-24**

All groups below the age of 50 account for a smaller proportion of the Felixstowe Pensinula population than they do across Great Britain as a whole



Source: ONS 2020 mid-year population estimates

# Deprivation

## Key facts



**3,410**

people affected by  
income deprivation

9.9%

Suffolk average 10.0%



**9.5%**

of working age  
people affected by  
employment  
deprivation

Suffolk average 8.3%  
1,730 people



**720**

children affected by  
income deprivation

13.6%

Suffolk average 13.6%



**1,190**

older people affected  
by income deprivation

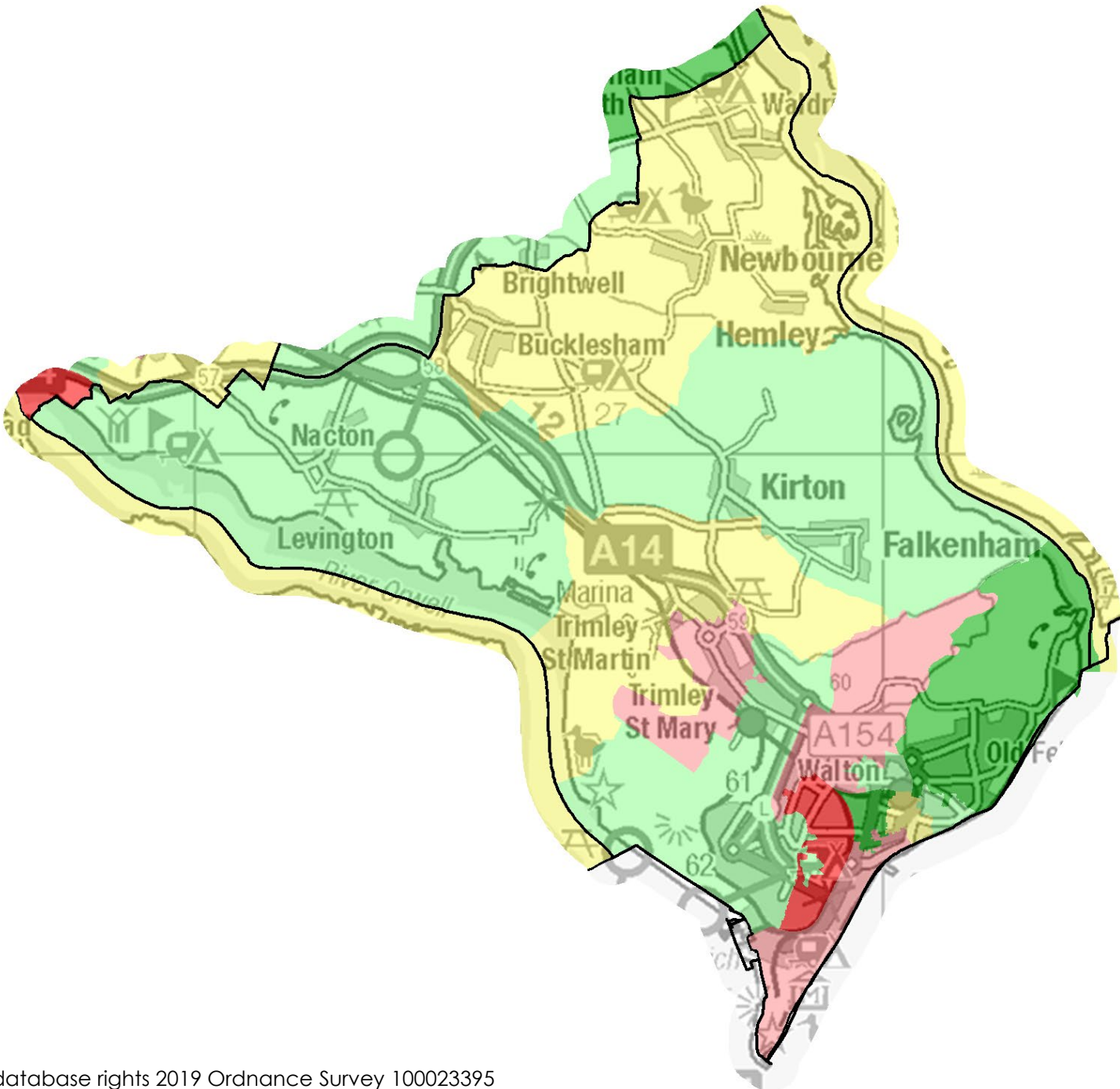
9.4%

Suffolk average 10.4%

# Deprivation Overall

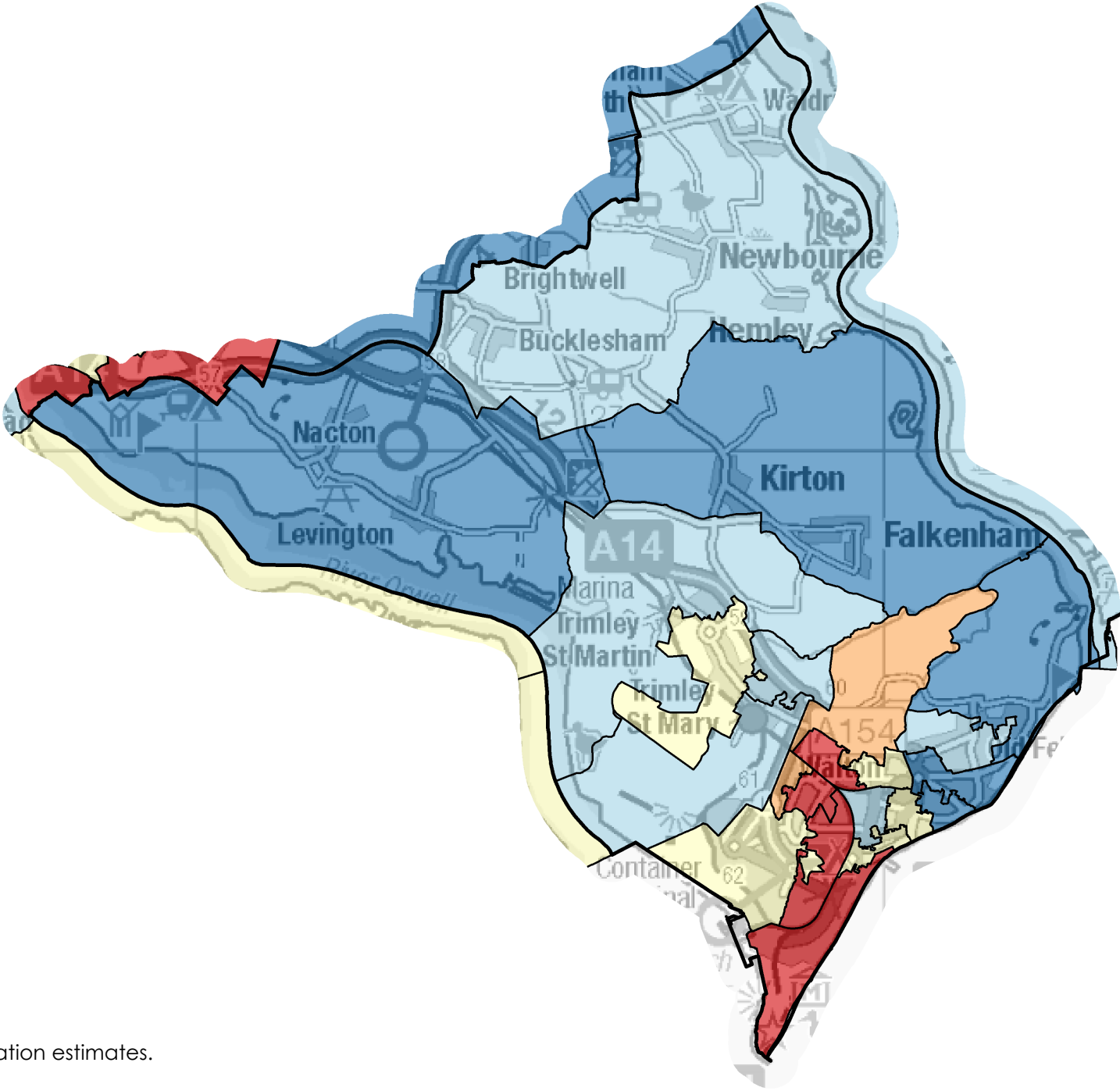
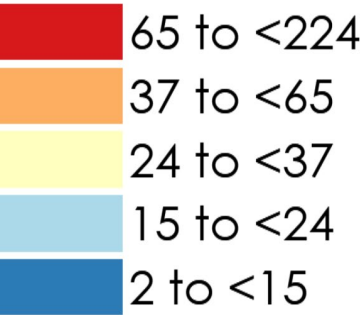
IMD quintile	Population	% of population
1	3,300	10%
2	9,620	28%
3	4,580	13%
4	10,010	29%
5	6,830	20%

1 = most deprived 20% of areas in England  
5 = least deprived 20% of areas in England



# Deprivation Children

## Children aged 0-15 income deprived



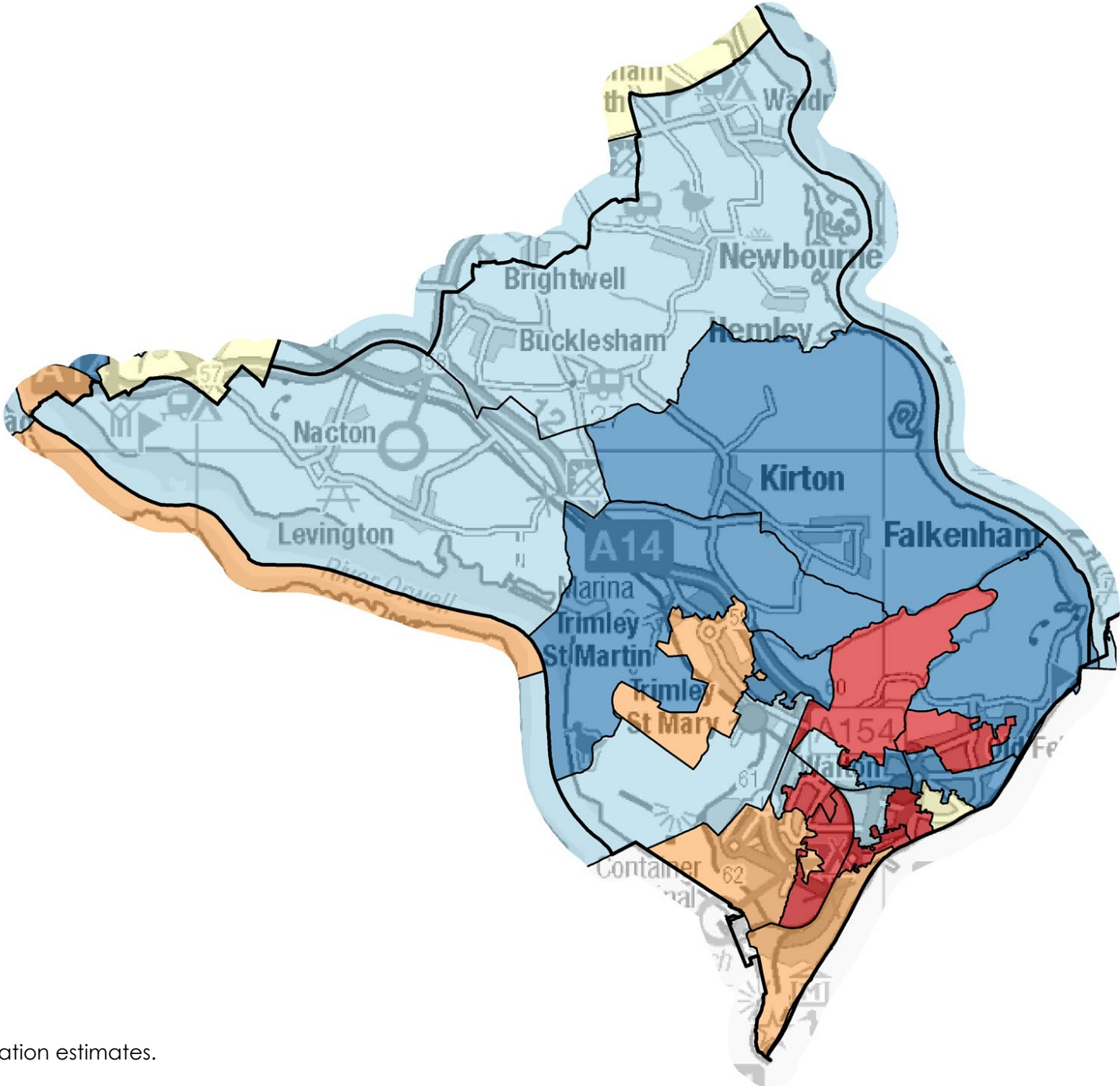
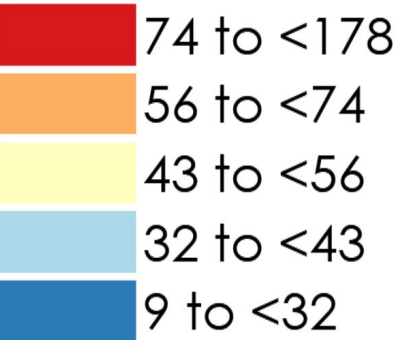
Sources: DCLG Index of Multiple Deprivation 2019 and ONS 2020 mid-year population estimates.  
Map © Crown copyright and database rights 2022 Ordnance Survey 100023395



# Deprivation

## Older people

### People aged 60+ income deprived



Sources: DCLG Index of Multiple Deprivation 2019 and ONS 2020 mid-year population estimates.  
Map © Crown copyright and database rights 2022 Ordnance Survey 100023395

# Health and social care

## Life expectancy

Ward/comparator area	Life expectancy at birth for males	Life expectancy at birth for females
Eastern Felixstowe	79.8	82.9
Orwell & Villages	80.7	86.4
Western Felixstowe	79.5	82.9
East Suffolk	80.7	83.9
Suffolk	80.9	84.2

### Highest and lowest life expectancy in East Suffolk

Melton Ward (Woodbridge CP)	85.9	90.5
Harbour & Normanston Ward (Lowestoft CP)	75.1	80.5



1.2 years

the gap in life expectancy for males between Western Felixstowe and Orwell & Villages Wards



3.5 years

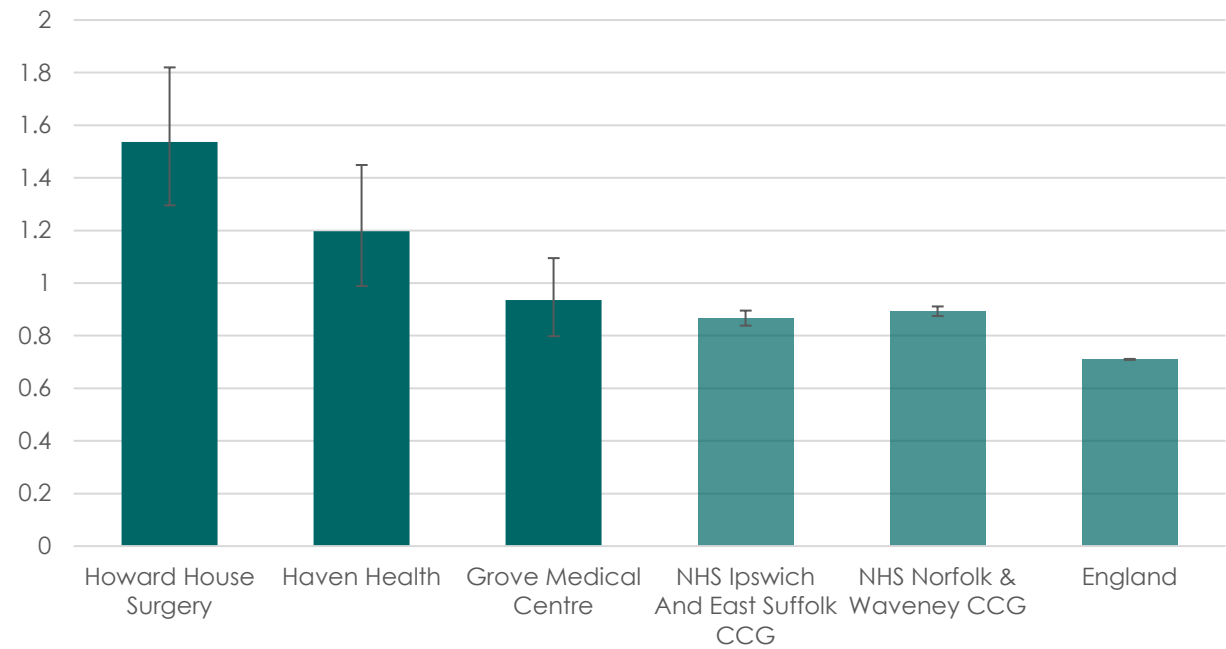
the gap in life expectancy for females between Eastern and Western Felixstowe and Orwell & Villages Wards



# Health and social care

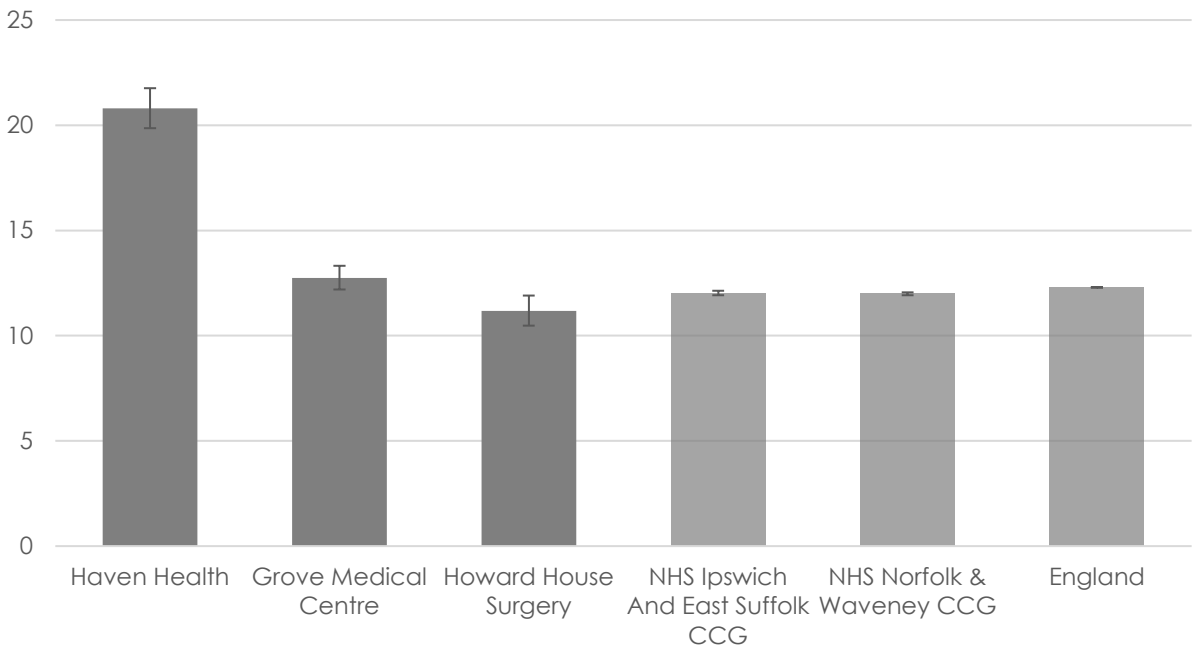
## Mental health

Dementia: QOF prevalance (all ages)



Prevalence of dementia is higher than the national average among patients at Grove Medical Centre, Howard House Surgery and Haven Health

Depression: recorded prevalence (aged 18+)

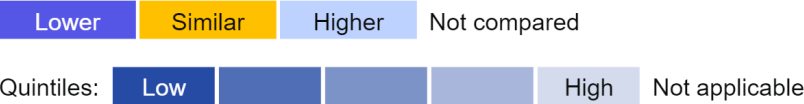


Prevalence of depression is higher than the national average among patients at Haven Health and Grove Medical Centre

# Health and social care

## Mental health

### Depression



Indicator	Period		England	Felixstowe ESCP GPs	D83015 - Howard House Surgery	D83081 - Haven Health	D83048 - Grove Medical Centre
Depression							
Depression: Recorded prevalence (aged 18+)	2020/21		12.3	14.3*	11.2	20.8	12.7
Depression: QOF incidence (18+) - new diagnosis	2020/21		1.4	1.5*	0.8	1.6	1.8
Personalised Care Adjustment (PCA) rate for depression indicator	2020/21		21.0	20.9*	45.0	18.3	16.2
DEP003 - Newly diagnosed patients with depression who had a review 10-56 days after diagnosis (denominator incl. PCAs)	2020/21		47.2	64.7*	51.7	51.4	73.7

# Health and social care

## Mental health

## Dementia

Lower Similar Higher Not compared

Quintiles: Low High Not applicable

Indicator	Period		England	Felixstowe ESCP GPs	D83015 - Howard House Surgery	D83081 - Haven Health	D83048 - Grove Medical Centre
<b>Dementia</b>							
Dementia: QOF prevalence (all ages)	2020/21	◀▶	0.7	1.2*	1.5	1.2	0.9
Personalised Care Adjustment (PCA) rate for dementia indicators	2020/21	◀▶	8.0	14.5*	20.6	5.8	15.1
% reporting Alzheimer's disease or dementia	2021	◀▶	0.6	0.0*	0.0	0.0	0.0
DEM004 - Dementia care plan has been reviewed last 12mths (denominator incl. PCAs)	2020/21	◀▶	39.7	64.1*	71.8	28.8	81.6
DEM005 - Blood tests recorded (den.incl.exc.) - retired after 2018/19	2018/19	◀▶	70.0	85.2*	83.3	69.2	92.7

# Health and social care

## Mental health

### Other indicators

Lower Similar Higher Not compared

Quintiles: Low High Not applicable

Indicator	Period		England	Felixstowe ESCP GPs	D83015 - Howard House Surgery	D83081 - Haven Health	D83048 - Grove Medical Centre
<b>Other Mental Health disorders</b>							
Mental Health: QOF prevalence (all ages)	2020/21		0.95	1.04*	1.08	1.22	0.92
Personalised Care Adjustment (PCA) rate for MH indicators	2020/21		6.5	11.7*	21.5	3.1	14.1
% reporting a long-term mental health problem	2021		11.0	10.8*	8.7	16.0	9.3
MH002 - Patients with severe mental health issues having a comprehensive care plan (denominator incl. PCAs)	2020/21		43.1	74.8*	59.3	85.4	73.7
MH003 - Record of blood pressure check in preceding 12 months for patients on the MH register (denominator incl. PCAs)	2020/21		55.4	83.1*	78.0	87.5	81.8
MH006 - Record of BMI in the last 12 months for patients on the MH register (denominator incl. PCAs)	2020/21		54.4	85.0*	88.1	88.5	79.8

# Health and social care

## Mental health

### Other indicators

Lower Similar Higher Not compared

Quintiles: Low High Not applicable

Indicator	Period		England	Felixstowe ESCP GPs	D83015 - Howard House Surgery	D83081 - Haven Health	D83048 - Grove Medical Centre
<b>Other Mental Health disorders</b>							
MH007 - Record of alcohol consumption for patients on the MH register (last 12 mnths), den. incl. exc. - retired after 2018/19	2018/19		81.1	87.7*	78.9	95.7	83.3
MH008 - Female patients (25-64 yrs) on the MH register who had cervical screening test in preceding 5 years (den. incl. exc.) - retired after 2018/19	2018/19		70.5	71.4*	70.0	60.9	80.0
MH009 - Patients on lithium therapy with record of serum creatinine and TSH in the preceding 9 months (den.incl.exc.) - retired after 2018/19	2018/19		94.5	100*	100	100	100
MH010 - Patients on lithium therapy with levels in therapeutic range in preceding 4 months (den.incl.exc.) - retired after 2018/19	2018/19		82.8	91.7*	75.0	100	95.2

# Health and social care

## Childhood weight

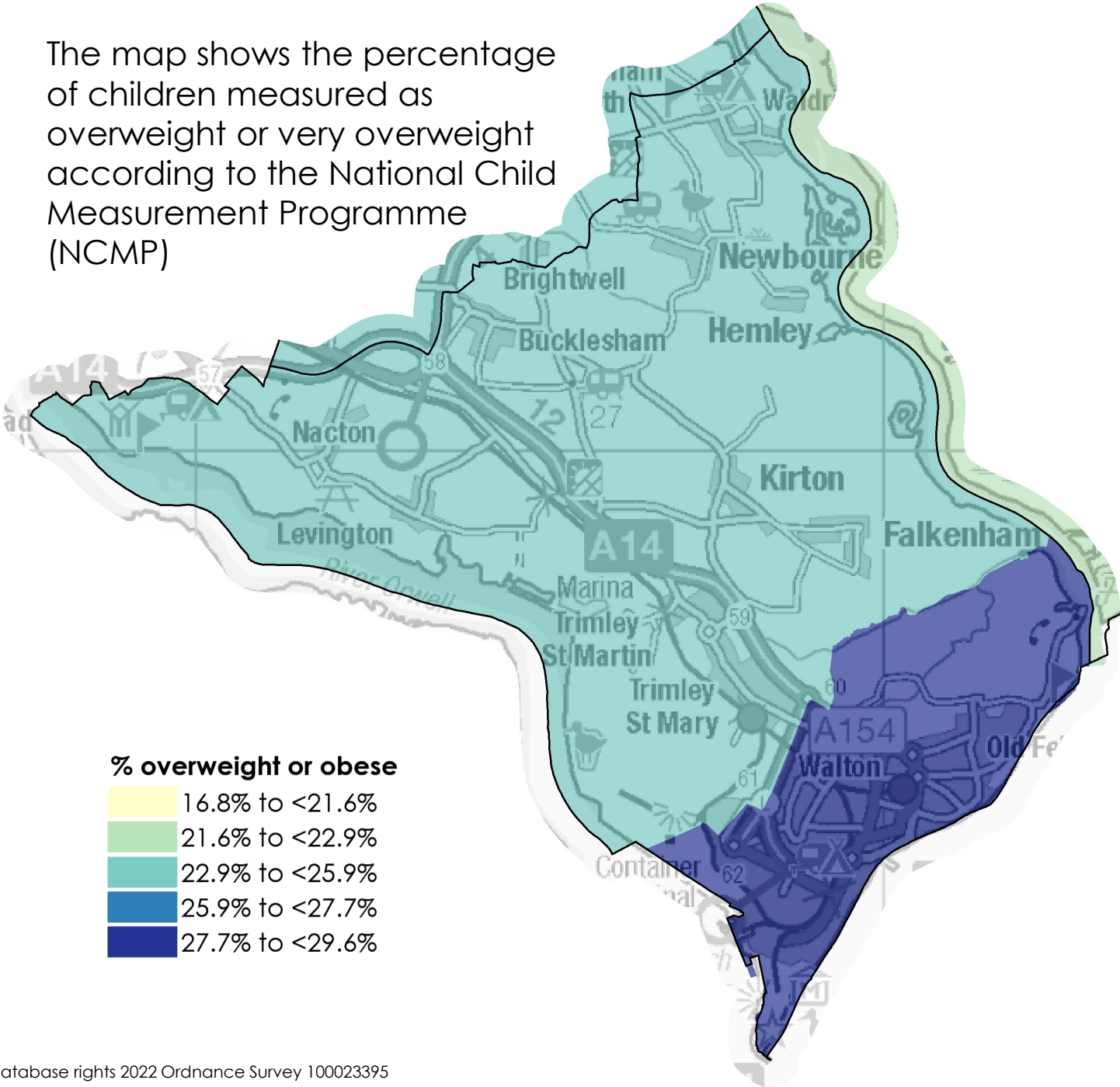


Primary school children  
overweight or obese

Lowest CP: Southwold & Kessingland  
20.1%

Highest CP: Felixstowe 27.9%

The map shows the percentage of children measured as overweight or very overweight according to the National Child Measurement Programme (NCMP)





# Health and social care

## Physical activity



**38.9%**

of adults complete 2+ hours of  
exercise per week

Lowest CP: Lowestoft 37.3%  
Highest CP: Kesgrave & Martlesham 43.9%  
UK average: 39.1%



**29.7%**

of adults do not exercise

Lowest CP: Kesgrave & Martlesham 22.1%  
Highest CP: Lowestoft 32.0%  
UK average: 29.5%

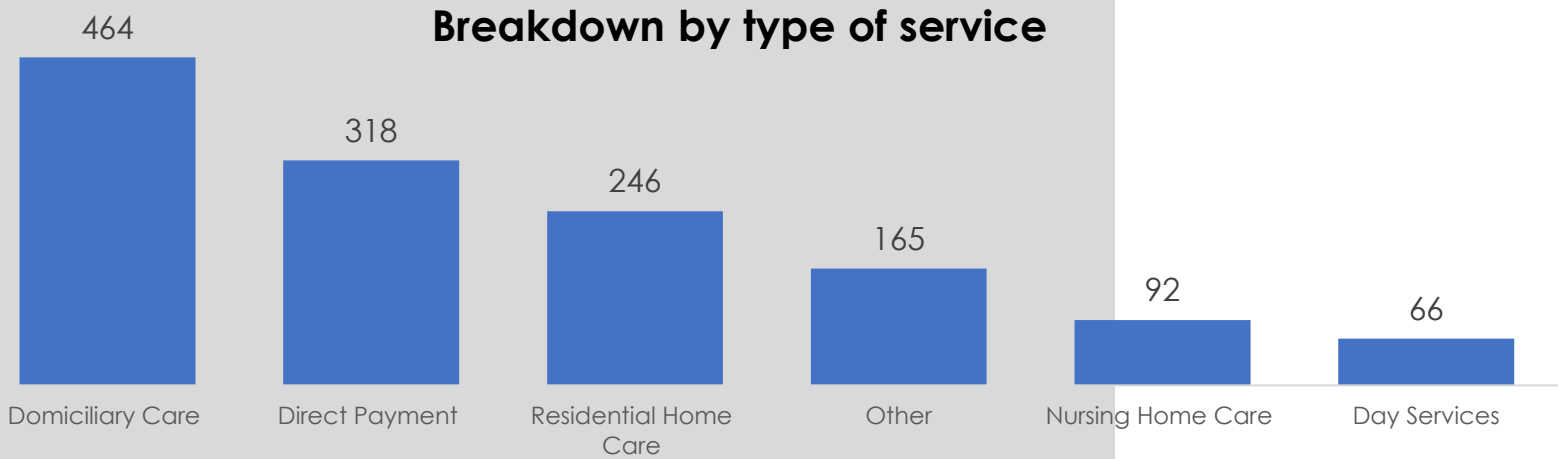
# Health and social care

## Adult care

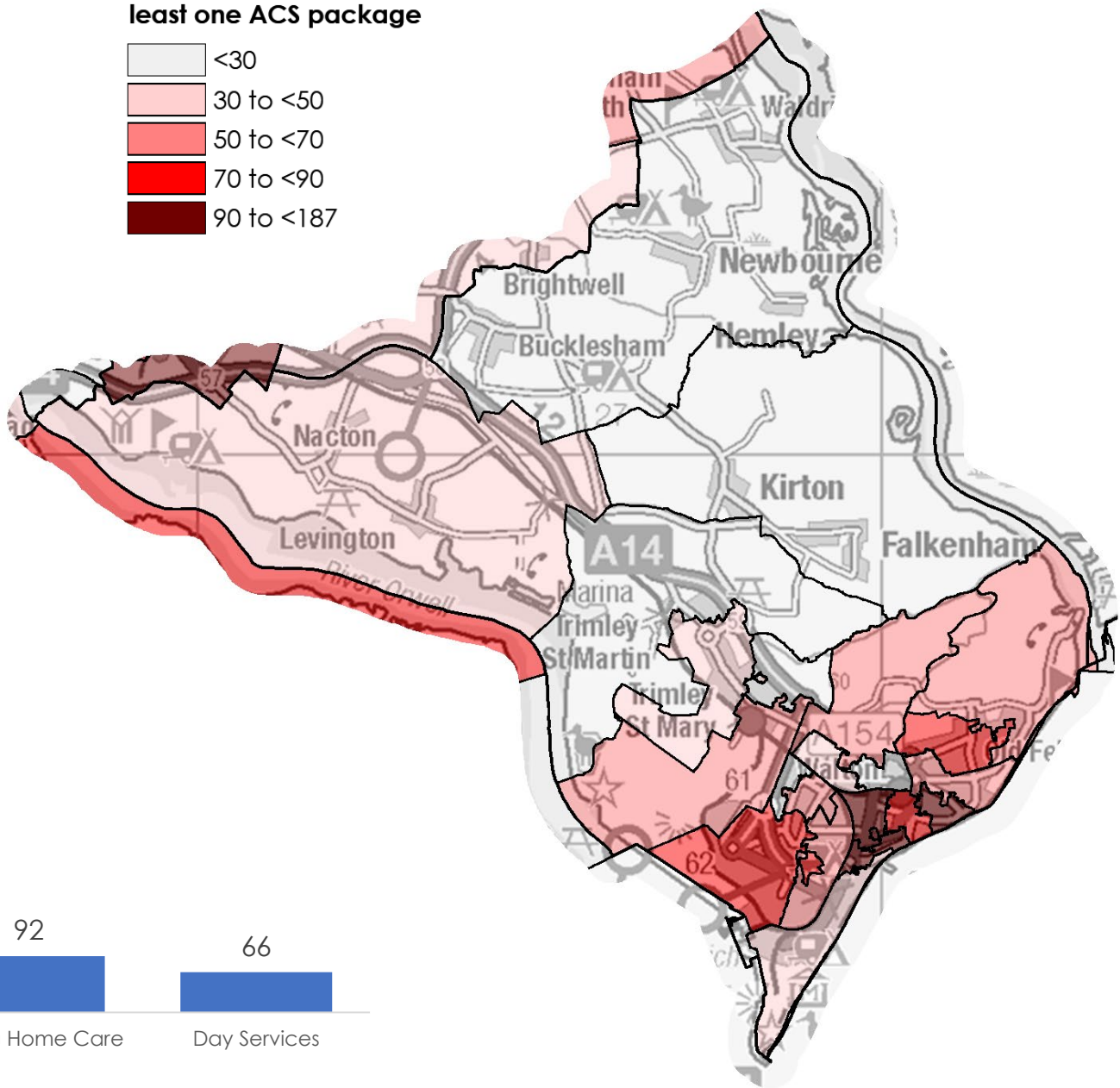
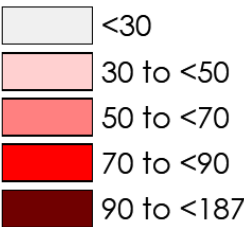


**1,140**  
Adults received a  
social care service  
in the last two years

Breakdown by type of service



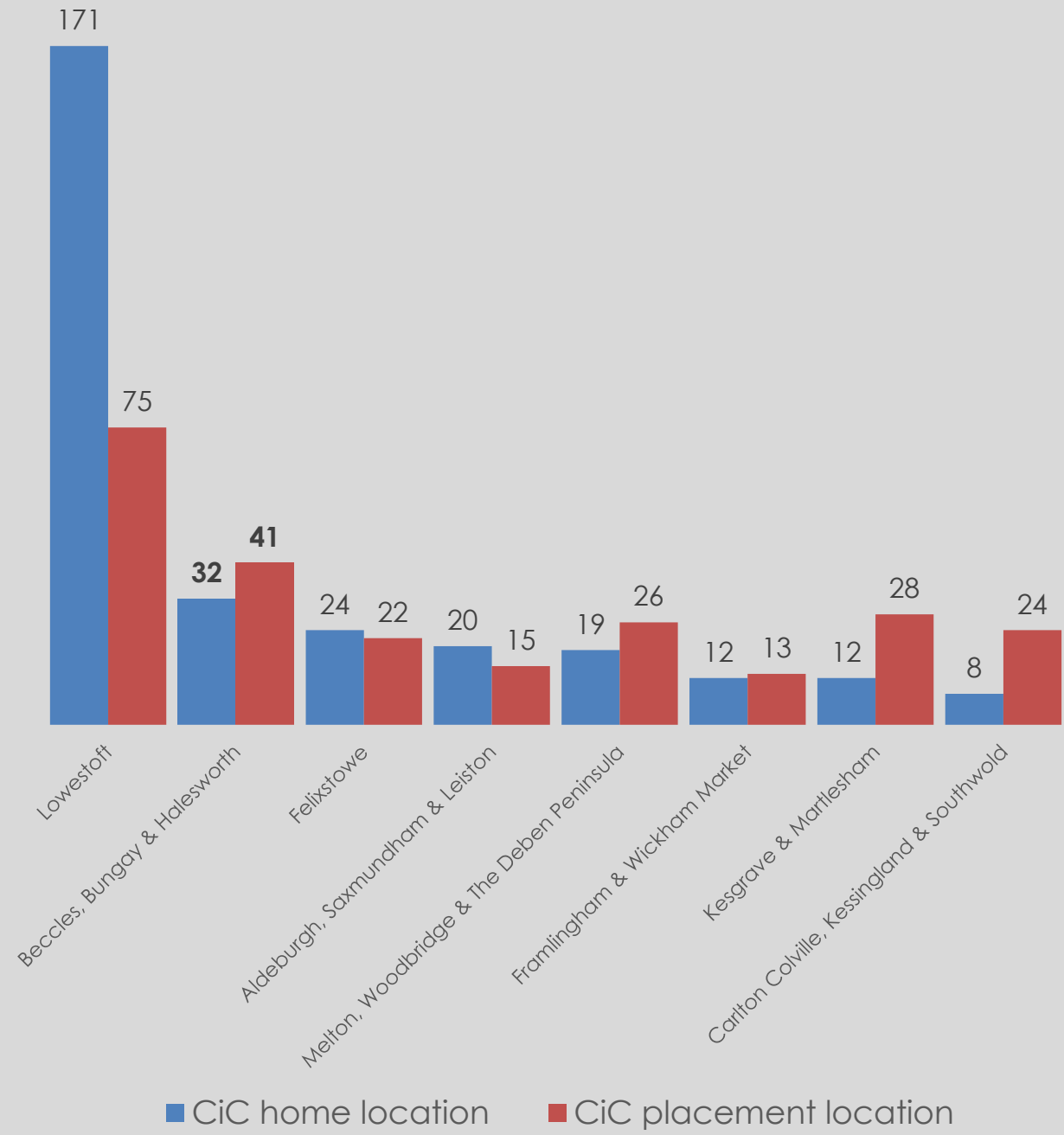
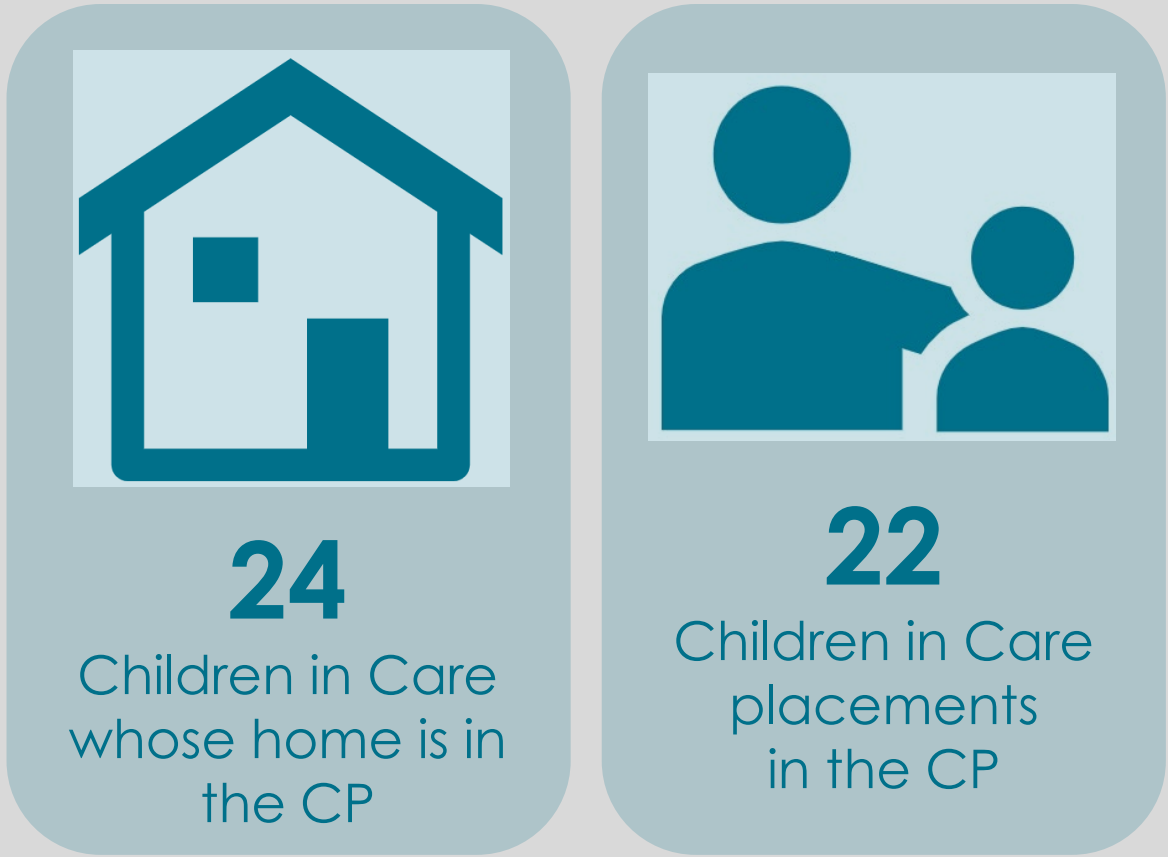
Adults receiving at least one ACS package



Source: Suffolk County Council ACS. Two years data to July 2019

# Health and social care

## Children's care

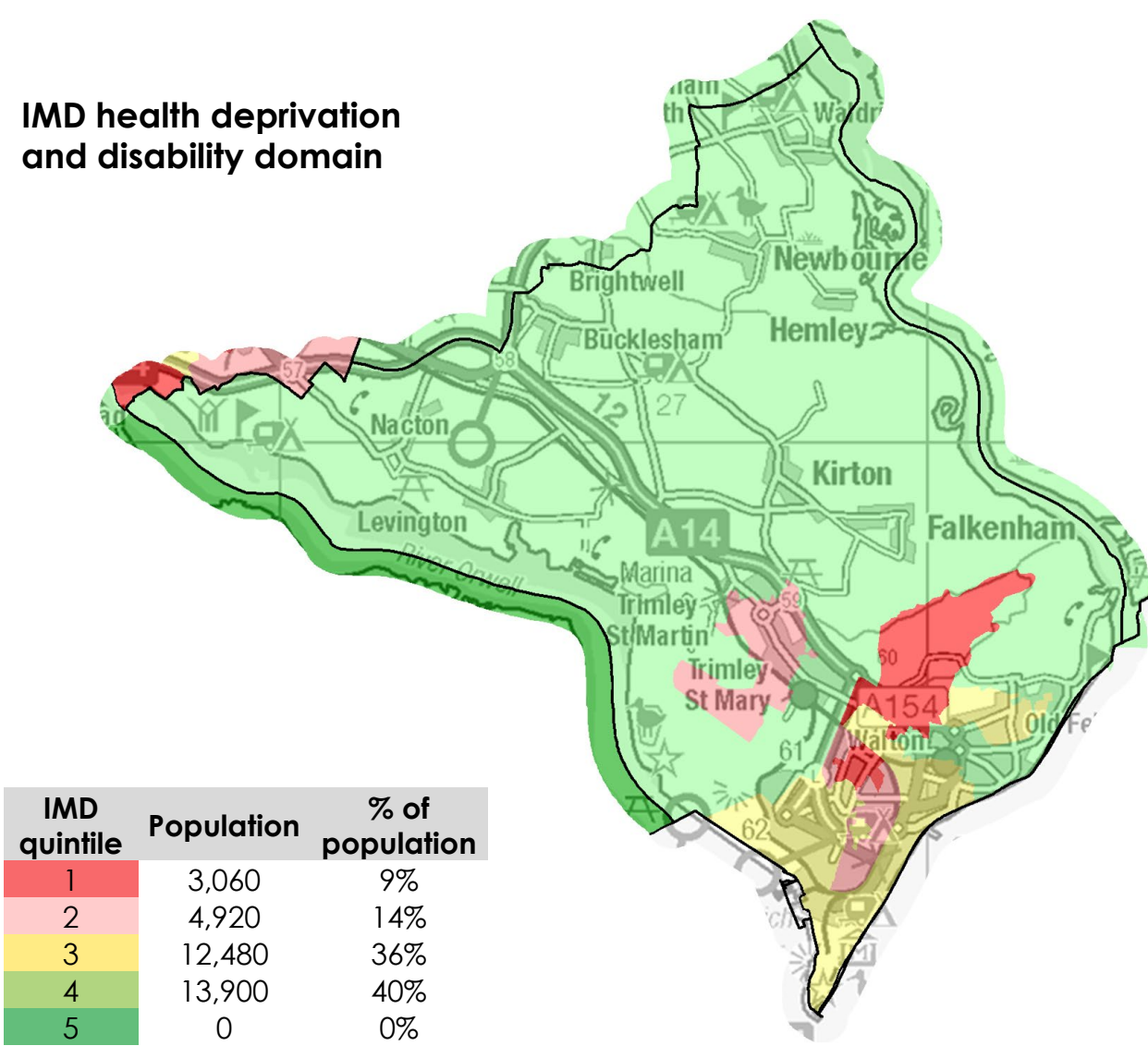


Source: Suffolk County Council CYP iHub. July 2019 data

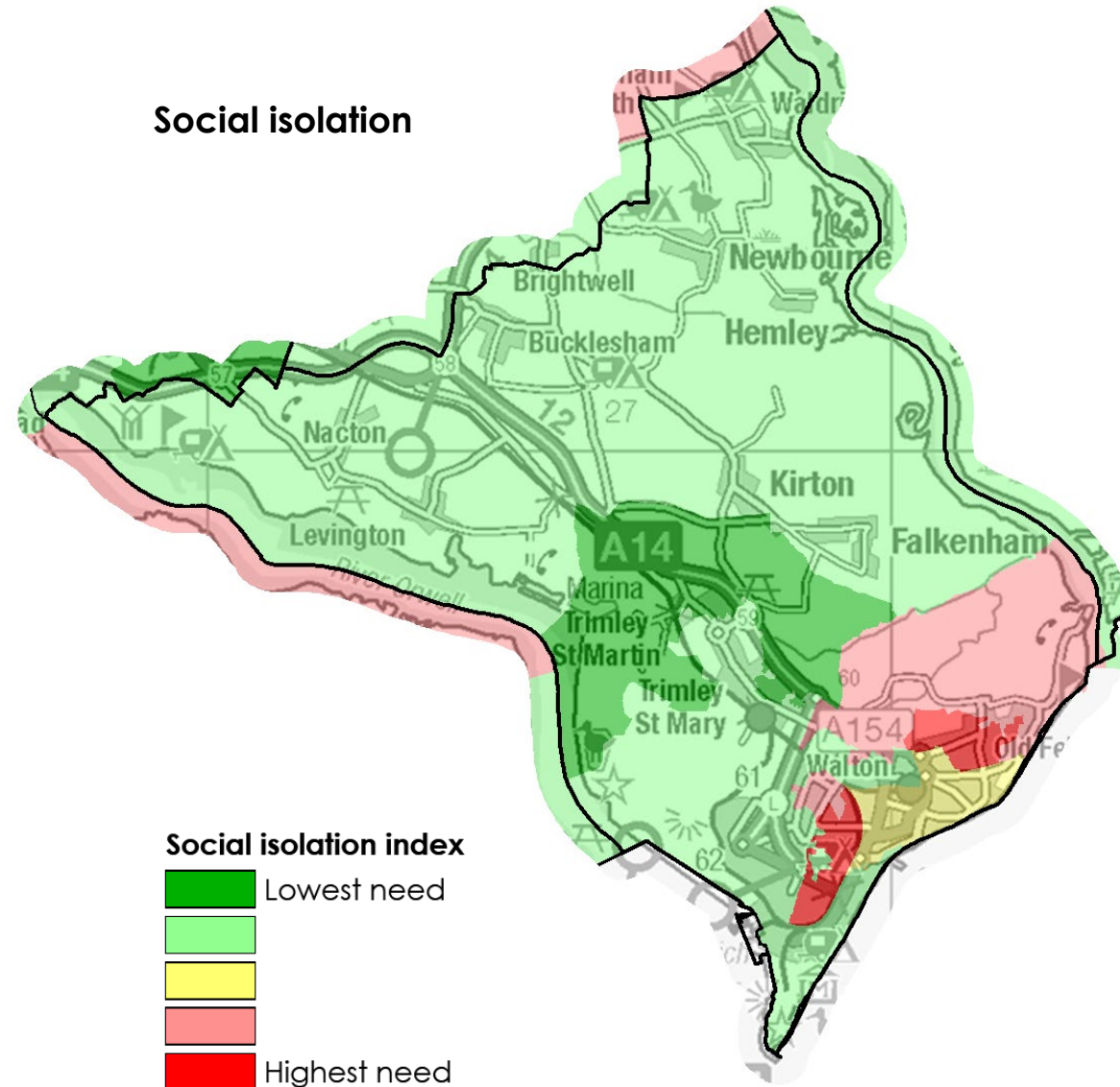
# Health and social care

## Disability and social isolation

IMD health deprivation  
and disability domain



Social isolation



Source: DCLG Index of Multiple Deprivation 2019. Map © Crown copyright and database rights 2019 Ordnance Survey 100023395

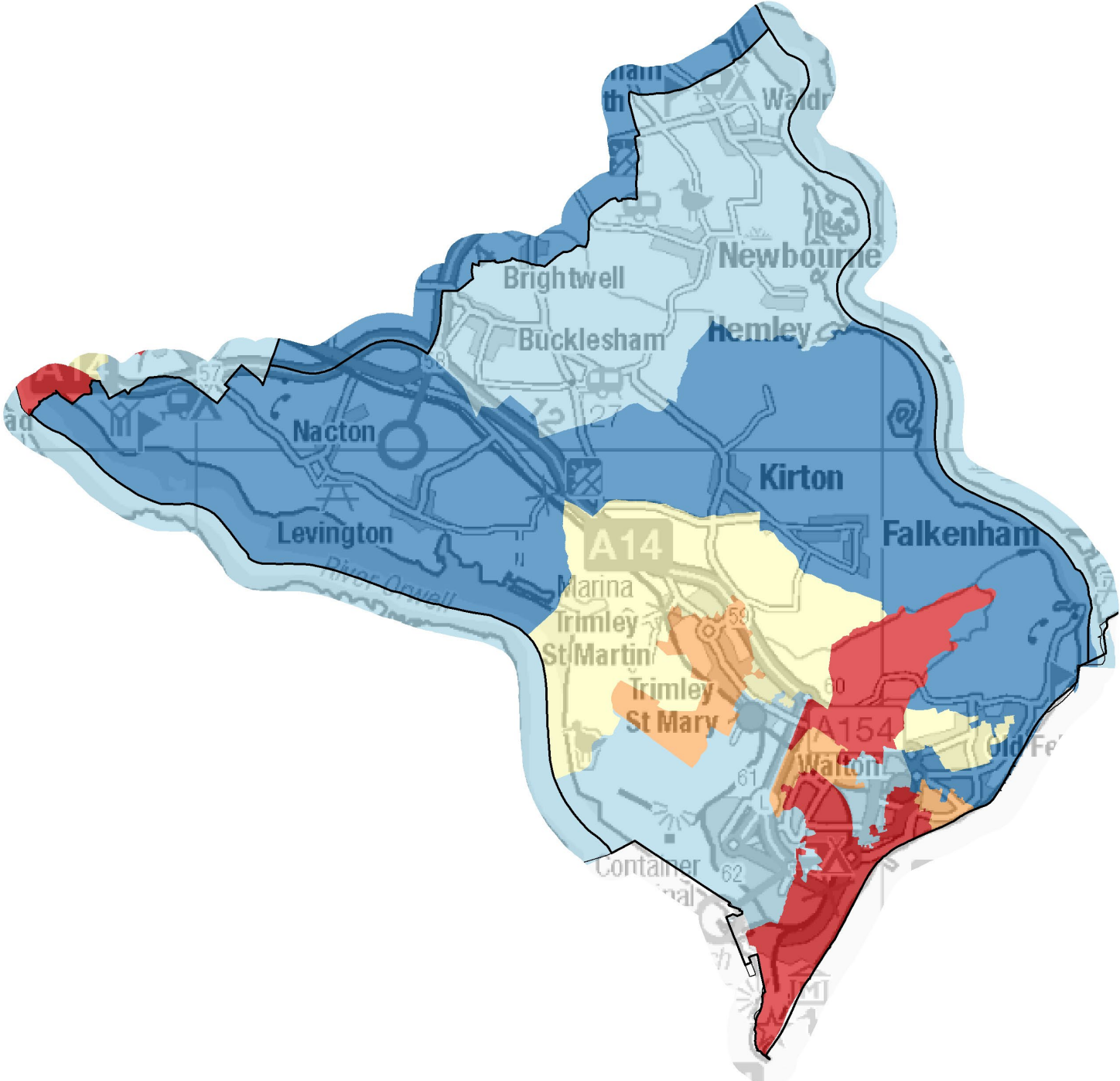
# Health and social care

## Loneliness

Age UK loneliness research

**Legend**

- Highest levels of loneliness (top 20%)
- Mid 20%
- Lowest levels of loneliness (bottom 20%)



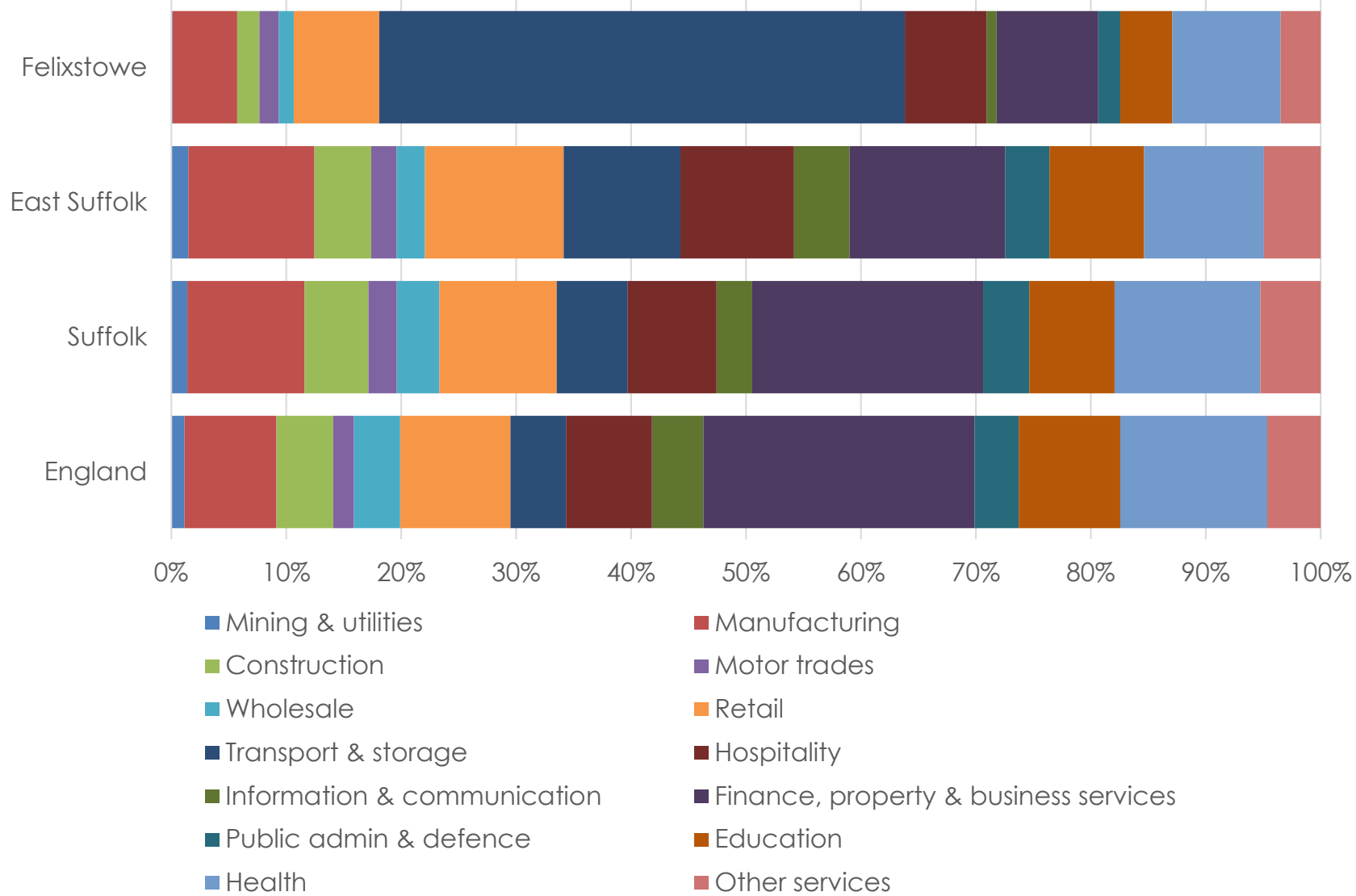


# Employment and education

## Employment



**Transport & storage**  
accounts for almost  
**1 in 2**  
jobs in Felixstowe 1 in 17  
across Suffolk and 1 in 20  
in England





# Employment and education

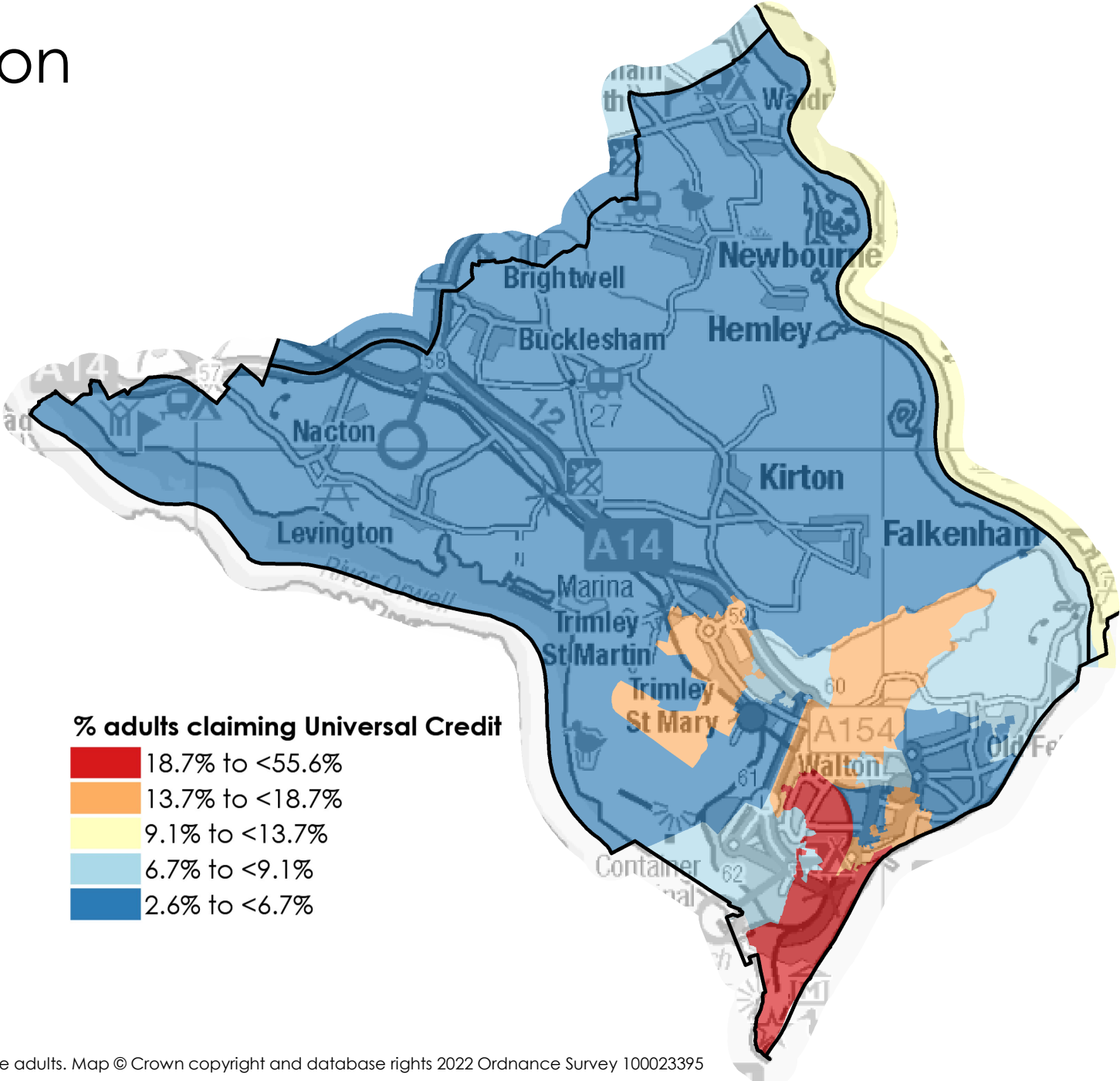
## Benefit claimants



**10.7%**  
of adults in receipt of  
Universal Credit

Highest CP: Lowestoft 23.8%

Lowest CP: Kesgrave  
& Martlesham 6.3%



# Employment and education

## Education – Key Stage 2

### Ofsted breakdown



9

Outstanding or Good



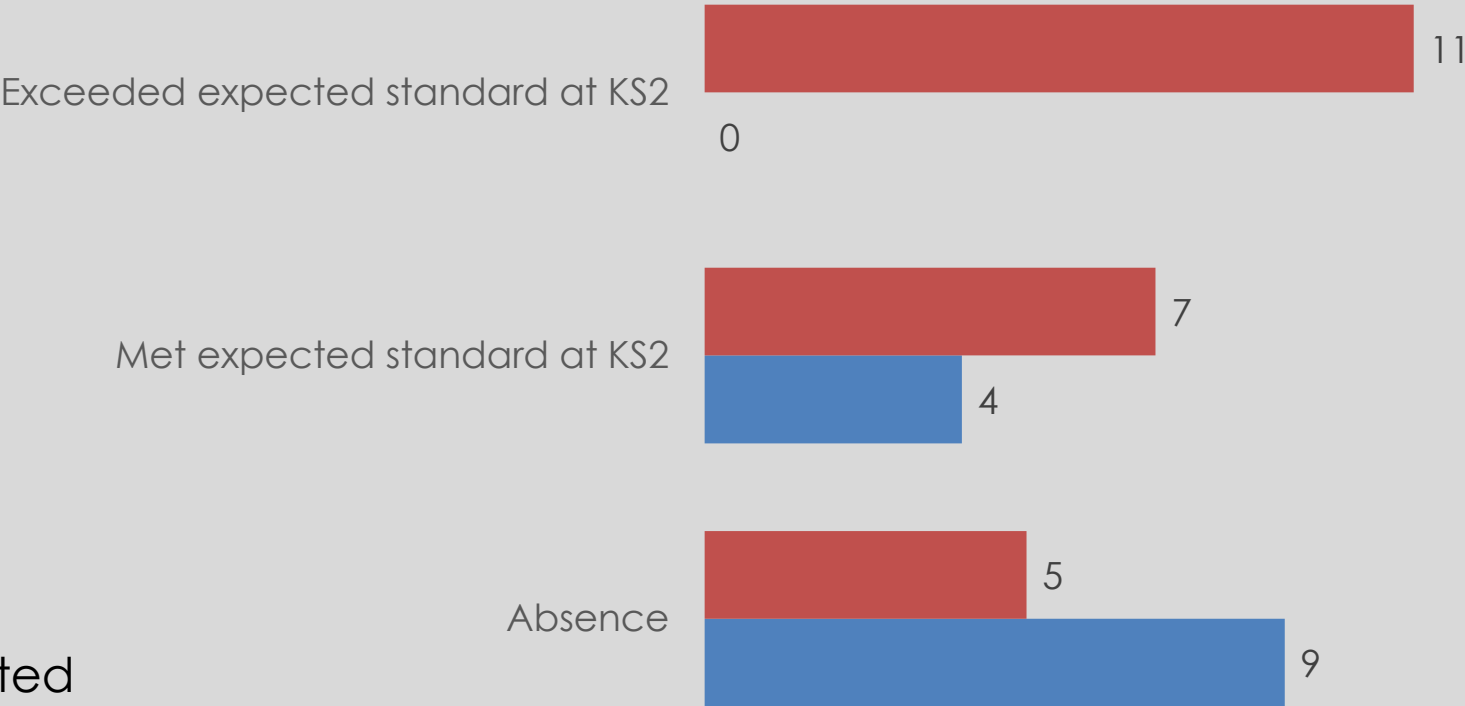
1

Require improvement  
or Inadequate

1 Primary school has not yet been inspected

### Number of Felixstowe Peninsula schools where the % of KS2 pupils...

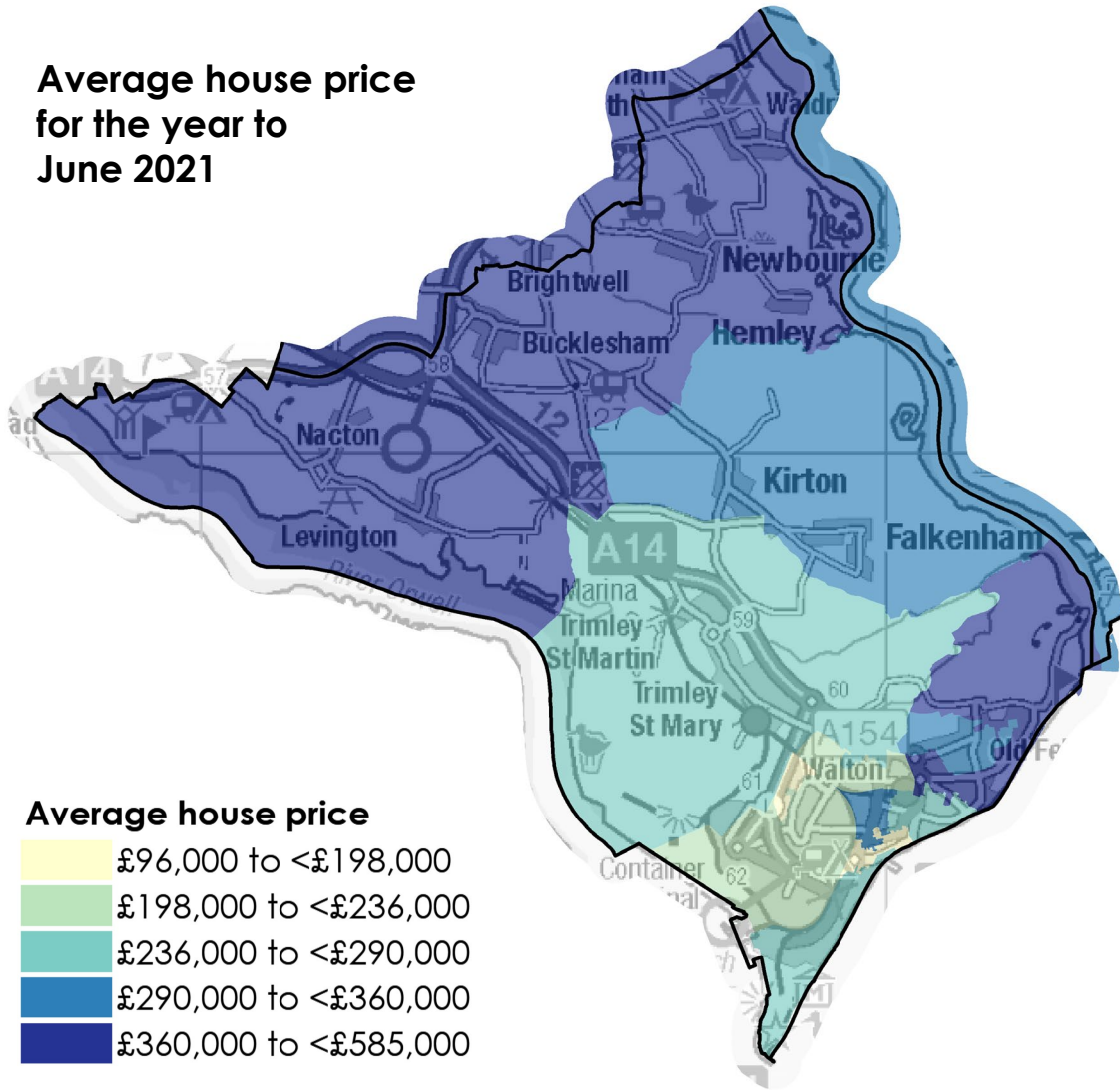
■ Worse than England average    ■ Better than England average



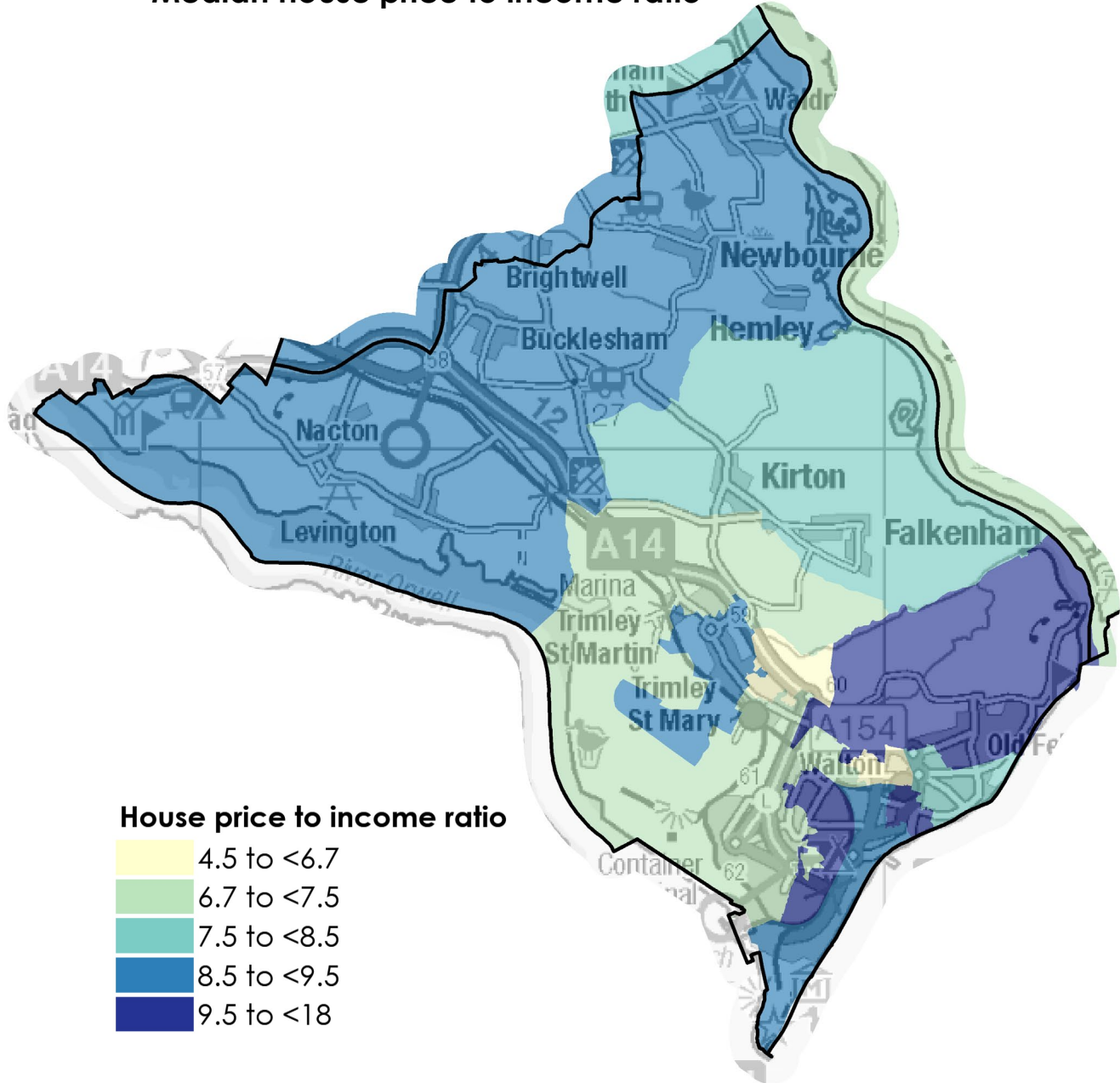
# Housing

## Prices and affordability

Average house price  
for the year to  
June 2021



Median house price to income ratio



# Housing

## Living environment



**2,830**  
houses in poor condition;  
18.3% of all houses, the  
lowest proportion of any CP

Highest CP: Framlingham &  
Wickham Market 44.0%

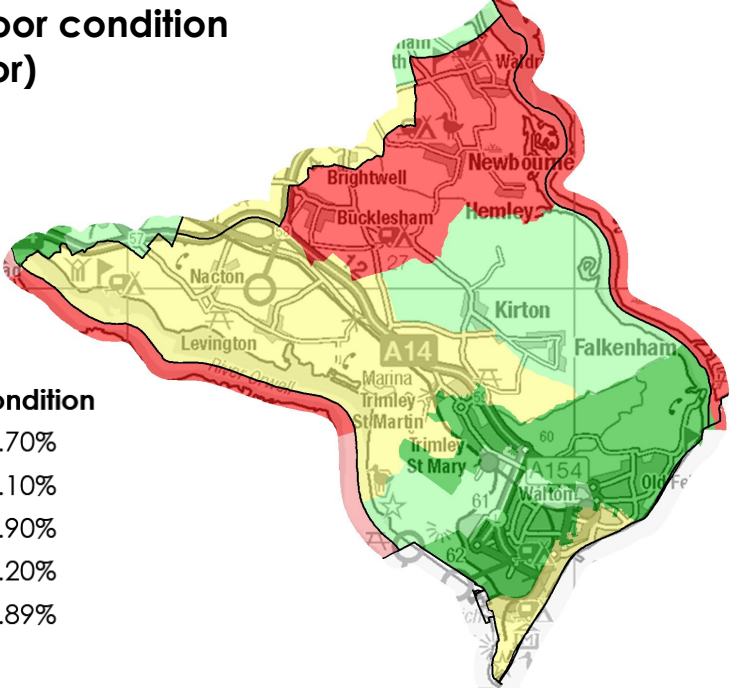
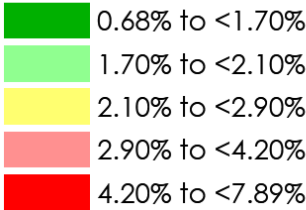


**520**  
hard to heat homes;  
3.3% of all houses

Lowest CP: Kesgrave & Martlesham 1.4%  
Highest CP: Lowestoft 3.7%

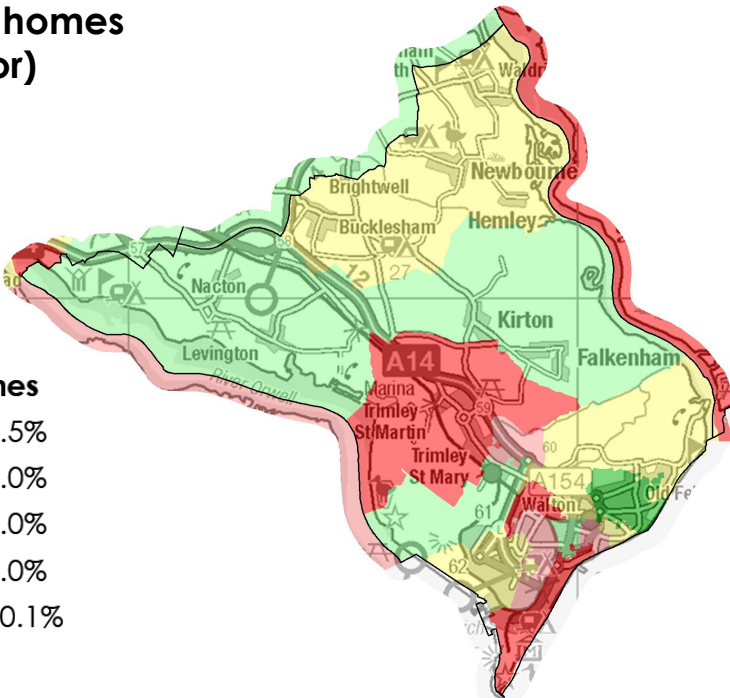
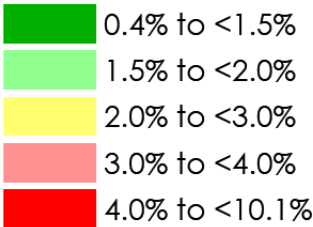
### Housing in poor condition (IMD indicator)

#### Housing in poor condition



### Hard to heat homes (IMD indicator)

#### Hard to heat homes





# Environment

## Air quality and attitudes towards climate change



**48.5%** pay more for green products (UK 50.7%)



**2.6%** do not buy something due to too much packaging (UK 2.7%)



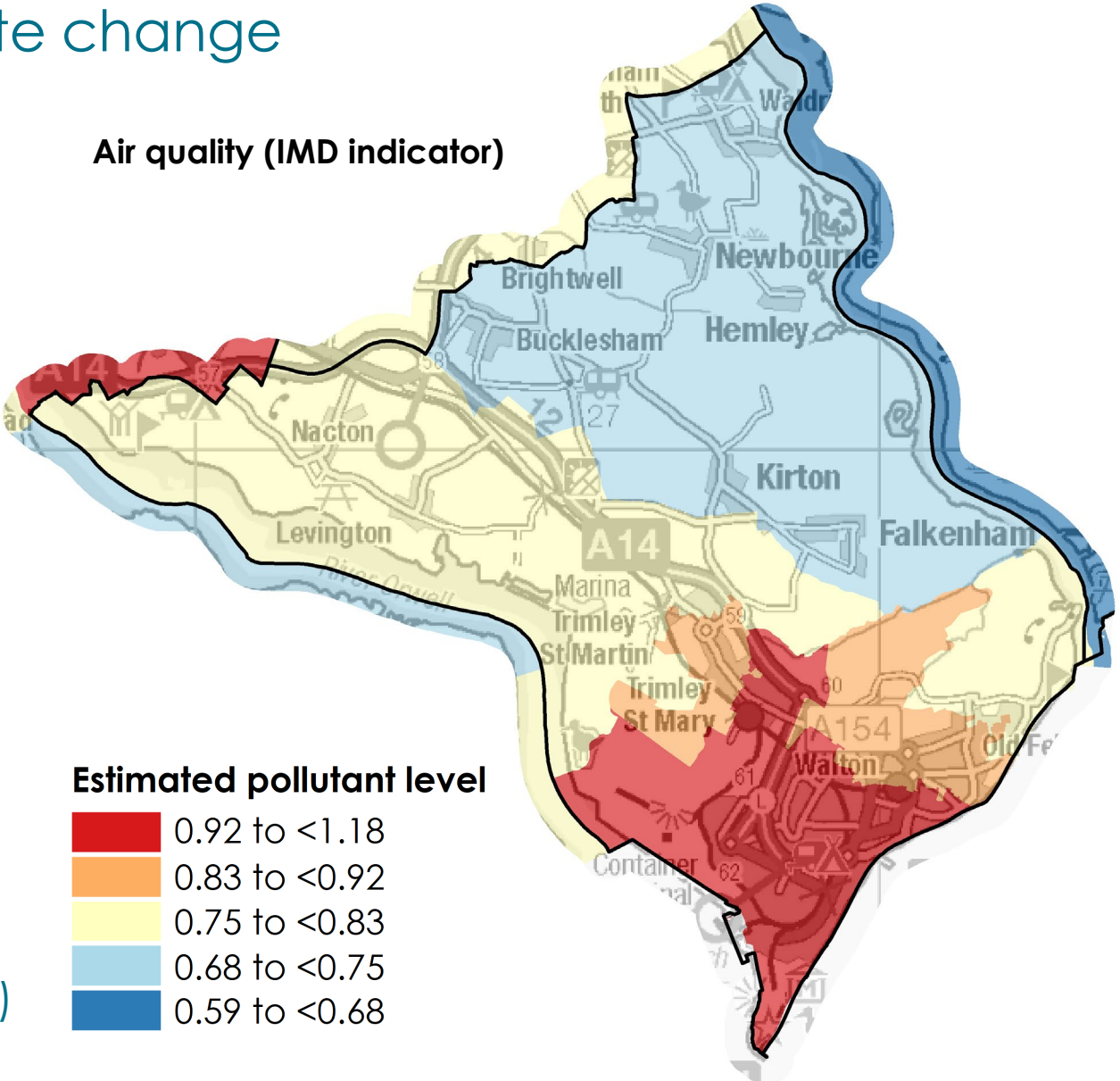
**52.8%** recycle items rather than throwing away (UK 50.9%)



**30.9%** make effort to cut down on water usage (UK 29.3%)



**45.6%** have a reasonable knowledge of climate change (UK 46.2%)



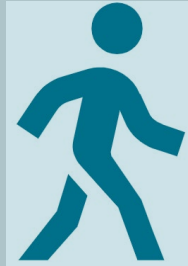
# Community/services Transport



# 83.4%

of homes are within  
1/4 of a mile of a  
frequent\* bus  
service, the 2<sup>nd</sup>  
highest of any CP

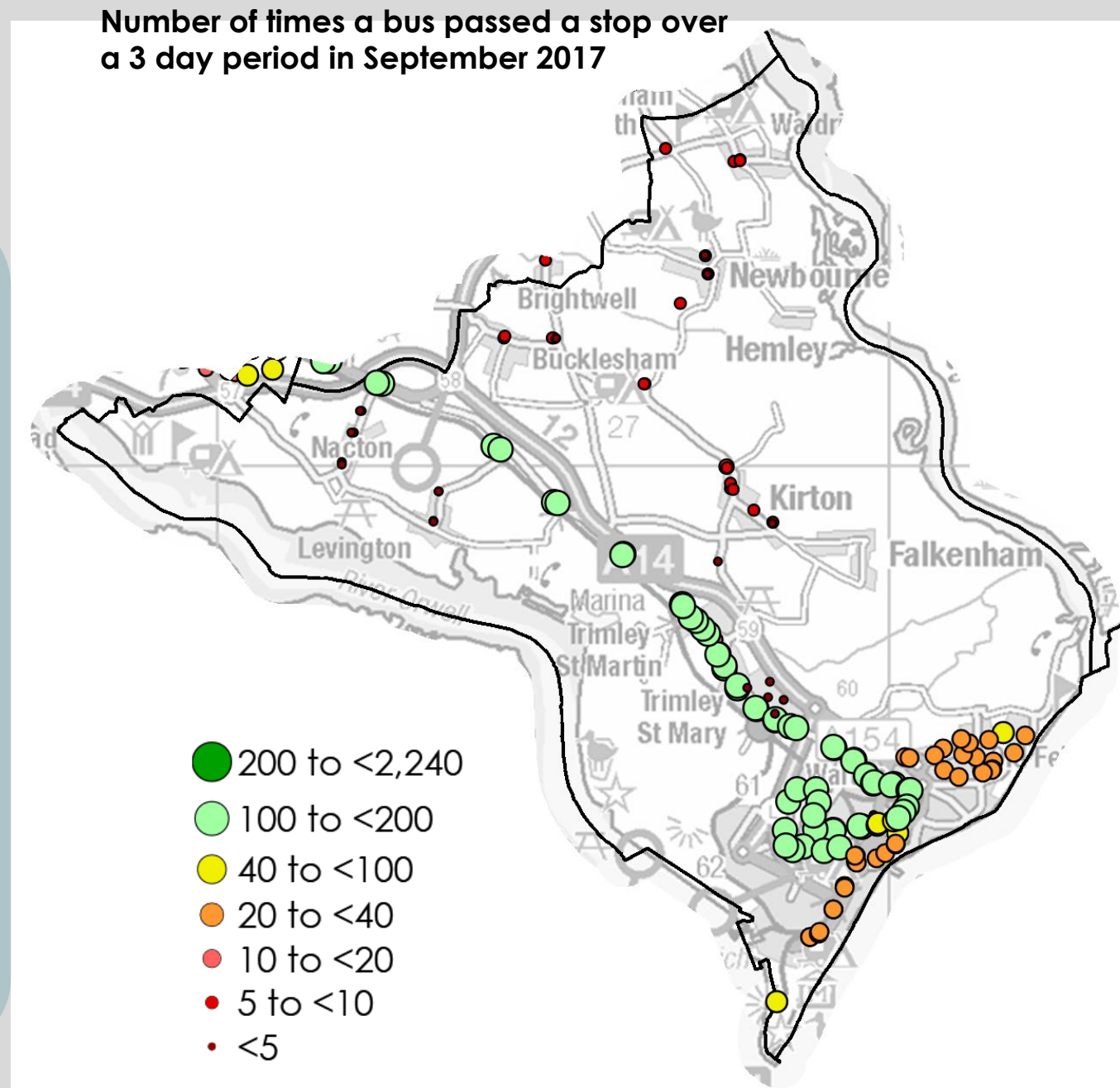
Lowest CP: Framlingham & Wickham Market 38.3%  
Highest CP: Kesgrave & Martlesham 84.9%



# 1.0%

of homes are more than 2 miles from a frequent\* bus service, the 3<sup>rd</sup> lowest of any CP

Lowest CP: Kesgrave & Martlesham 0.0%  
Next highest CP: Framlingham & Wickham Market: 20.8%





# Population by Parish

Parish name	Population
Felixstowe	24,560
Trimley St. Mary	3,830
Trimley St. Martin	2,130
Kirton	1,190
Nacton	870
Bucklesham	550
Waldringfield	460
Newbourne + Hemley	320
Levington + Stratton Hall	240
Falkenham	180