

FUNDING

Frances Bedding – Head of External Funding
Suffolk County Council

Funding Opportunities

- Today we focus on 3 funds:
 - Locality Budgets
 - LEADER Programme
 - European Agricultural Fund for Rural Development (EAFRD)

Locality Budgets

- Each elected councillor has a delegated budget to support projects and organisations within their community
- It is allocated at councillors discretion
- Typically range between £300 to £1,000
- Reduced budget for 17/18 £8,000
- Last year groups and projects that benefited included:
 - village halls and other community buildings;
 - Playgrounds
 - toddler groups

Stradbroke Courthouse and Library Trust (SCALT)



- In 2014 it seemed that the Stradbroke Library would have to close and the building be taken out of use. However, thanks to the campaigning of a group of committed residents, not only was the Library saved, but in addition, the building itself was entrusted to the village by Suffolk County Council. The requirement was that it should continue to offer the library service and also make enough money to contribute to the running and maintenance of the building.
- SCALT is a group which was created to support the running of the building. They have been successful in developing the facility since taking it on. One innovative and imaginative feature of the rescue was the incorporation of a **Post Office** into the Library, a first for the UK.
- Next phase was to develop a community Café as place to meet for local people.
- Locality funding £2000 was applied for towards the development which included
 - New Kitchen facility
 - Tables and chairs
 - New flooring
 - Toilets upgraded
 - Cinema equipment
- Matched with various pots of funding including district council, parish council, Suffolk Libraries

LEADER – European Funding

- It is a French acronym, standing for '*Liaison Entre Actions de Développement de l'Économie Rurale*', meaning '**Links between the rural economy and development actions**'.
- A community based 'bottom up' approach that provides opportunities for local communities to identify their needs and devise appropriate, sustainable solutions



What is the LEADER programme?

- LEADER is an EU funded grant programme for:
- Farmers
- Growers
- Foresters
- Rural businesses
- Rural community organisations



Local objectives

- The programme is split into local areas (geographically based).
- Applicants need to be in one of these areas to apply
- Each local area has its own strategy
- Projects need to fit both national and local priorities



Heritage Coast area.



- **Heritage Coast** - is the Suffolk Coastal District Council area and the majority of the Tendring District Council area as well as smaller parts of Waveney, Babergh and Mid Suffolk District Council areas.

Awarded £1.845m



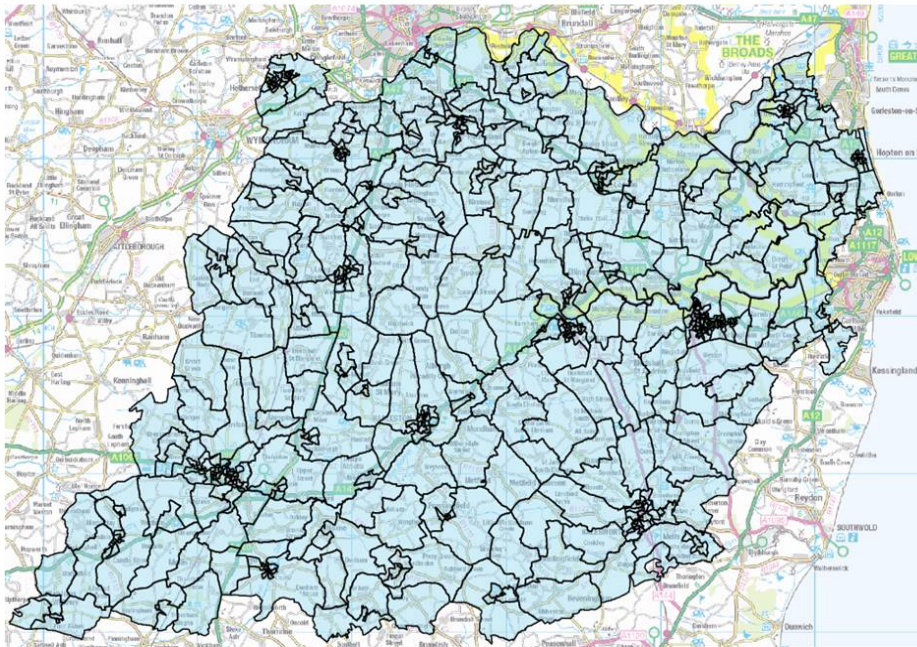
Wool Towns Area.

- **Wool Towns** - majority of the Babergh and Braintree District Council areas, including parts of Colchester Borough, St Edmundsbury, Mid Suffolk and Tendring District Council.

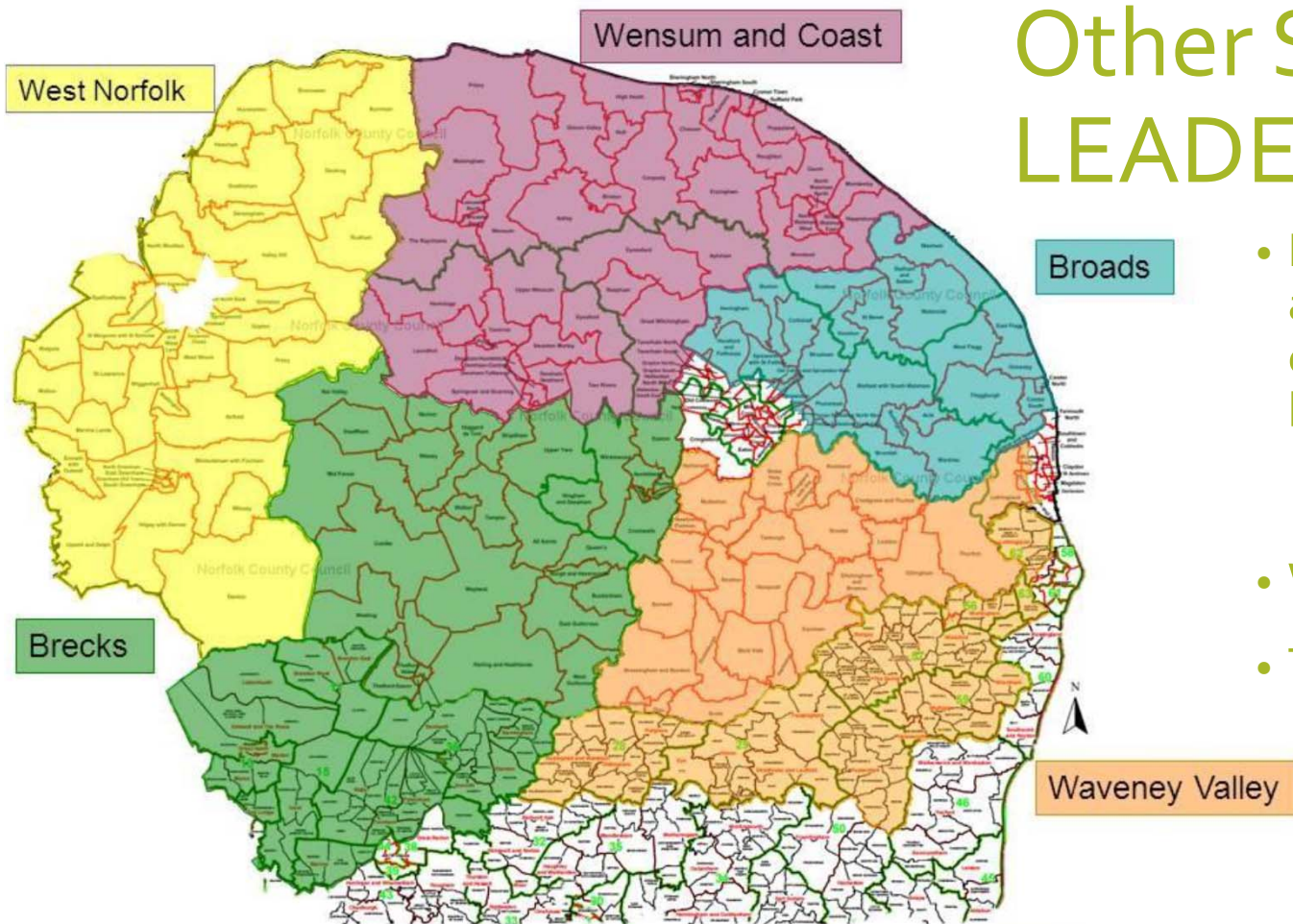


Awarded £1.792M

Waveney Valley



Waveney Valley - majority of Waveney and parts of Mid Suffolk and South Norfolk District Council areas. The main towns are Diss, Harleston, Bungay, Beccles, Halesworth and Loddon.



Other Suffolk LEADER areas

- Norfolk county Council administers two areas of the county which cross the county boundary.
- Waveney Valley:
- The Brecks:

The Application Process

- Two stage process:
 - Expression of Interest
 - Full Application
- Speak to your LAG Programme Manager
- Competitive process – applications are scored
- LAGs meet regularly to make decisions



Examples of eligible projects

- A pub expansion
- Holiday accommodation
- A winery and visitor centre
- Wedding venue accommodation
- Farm equipment
- New packing and distribution facilities for farmers



Key points

- The applicant, project or beneficiaries must be in a Local Action Group area
- Must have a strategic fit (Local and National priorities)
- Must have investigated other funding sources first
- Clear evidence of need
- Grants typically £2,500 - £100,000
- Most grants limited to 40% intervention rate
- Funding awards decided by Local Action Group (LAG).



Case Study

The Wild Meat company



- Theme: Farm Productivity / Food Processing and Marketing / Animal Health
- The Wild Meat Company are based in Blaxhall, Suffolk and they source and sell game & wild meat including venison, game birds, rabbit and even squirrel from farms and estates in the East Suffolk and deliver it to your door, as well as several butchers and supermarkets in Suffolk. They applied for a grant towards the purchase of new equipment to assist them to make the business more efficient and effective through the creation of a bespoke cutting, wrapping, labelling and branding service, which will help the business grow further.
- Website: www.wildmeat.co.uk
- The project will create 2.5 new full time jobs
- The project was awarded a LEADER grant of £34,916 (36% of a total project cost of £96,000)

Case Study

Clare Castle Country Park Trust

- **Theme: Tourism Accommodation / Tourist Attractions / Culture & Heritage**
- Clare Castle Country Park Trust manages the running of the 32 acre Clare Castle Country Park which includes the remains of a motte and bailey castle, moats and fishponds, open green spaces and woodland containing rare flora and fauna.
- In addition, there is a disused Victorian station, booking hall and station-masters house. The Trust applied to LEADER for a grant towards a project to renovate the old station booking hall and provide a railway themed café which would incorporate some of the key features of the original station. As the park currently has no refreshment facilities a therefore a new café will help to improve the visitor experience to the park and the Trust hope to increase the number of visitors by at least 25% over the next 3 years. Website: www.clarecastlecountrypark.co.uk
- **The project will create 2 new full time jobs**
- **The project was awarded a LEADER grant of £12,871 (40% of a total project cost of £32,177)**



Case Study

Shilbottle Village Hall



AFTER several years fund-raising, Northumberland Coast and Lowlands Leader was able to help people in Shilbottle finalise the funding needed to begin a new build Community Hall.

The building will use environmentally-friendly technologies for heat and energy generation, such as a wind turbine and ground source heat pumps, as well as rain water harvesting and natural light and ventilation, have also been incorporated.

The majority of the funding needed came through the Big Lottery Fund with £434,000 worth of support. Other funding for the project came from the Football Foundation which provided £100,000; £200,000 from Alnwick District Council; £20,000 from smaller charities and over £20,000 from community donations and the parish council.

Northumberland Coast and Lowlands Leader gave £52,000 towards the building development to help develop the space for the local nursery group to use in the village.

Further Information:

- **Wool Towns**

- www.suffolk.gov.uk/wool-towns

- **Waveney Valley**

www.Norfolklags.co.uk/Waveney-valley

Heritage Coast

www.suffolk.gov.uk/heritage-coast

- **Facilitators:**

- Wool Towns & Heritage Coast:

- Paul Henry – Programme Facilitator

- paul.henry@Suffolk.gov.uk

- 07702 141284

Waveney Valley:

- Paul Mace – Programme Facilitator

paul.mace@norfolk.gov.uk

071584 600816

Suffolk County Council External Funding Team

- Highly experienced project developers and managers
- Can advise and support the development of projects on EU and domestic funding opportunities
- Represent Suffolk's interests on a range of local, regional, national and international funding panels
- Can give support with claims and project delivery
- Can act as a "critical friend" to applicants
- Work closely with partners in public, private , community sectors

East Suffolk Grant Programmes

Helen Johnson & Benjamin Porter,
Funding Officers for Suffolk Coastal & Waveney
District Councils

Suffolk Coastal Grant Schemes

- Enabling Communities Budget
 - Each Councillor has £6,500 to award in 2017/18
 - The purpose of the ECBs is to provide kick-start funding for new activity, or for further development of an existing service, it is not intended to provide ongoing operational costs of an organisation.
 - Grants from £250 to £6,500 (smaller amounts are permitted)
 - Rolling scheme – contact Councillor directly to seek funds
 - Details of all ECB awards are listed on the relevant Cllr web pages.

Suffolk Coastal Grant Schemes

- Enabling Communities Exemplar Programme
 - Funding to assist groups to deliver new 'flagship' projects.
 - The scheme is a rolling programme, you can apply at any time.
 - Groups can apply for a grant between £1,000 and £10,000.
 - To be eligible for funding, the project must be supported by the relevant Ward Councillor.
 - The scheme can support both revenue and capital costs relating to your project.
 - 8 week decision period.

Waveney Grant Scheme

- Waveney Community Enabling Fund
 - Open to voluntary & community groups, charities, social enterprises in Waveney
 - It can fund community projects which deliver new activity or the extension/growth of existing activity.
 - Projects need to deliver against one or more of the priorities within the East Suffolk Business Plan
 - Groups can apply for a grant between £250 and £2,500 and can 100% fund projects
 - The fund can support both revenue and capital costs relating to your project, but it cannot pay for general running costs or retrospective project activity.
 - 6 week decision period. All applications will be assessed by a panel
 - The fund is open once per financial year, with 2017/18 launching in the coming months and will be open for a 2 month period. Application form and guidance will be available on www.eastsuffolk.gov.uk

East Suffolk Funding Team

- The Funding Team will be available at lunch if you would like to talk specifically about your project
- Alternatively, please contact us if you have a project which you are looking for funding for.
- Email us at grants@eastsuffolk.gov.uk
- Telephone us on 01502 523334 or 01394 444721
- Follow us on Twitter @EastFunding