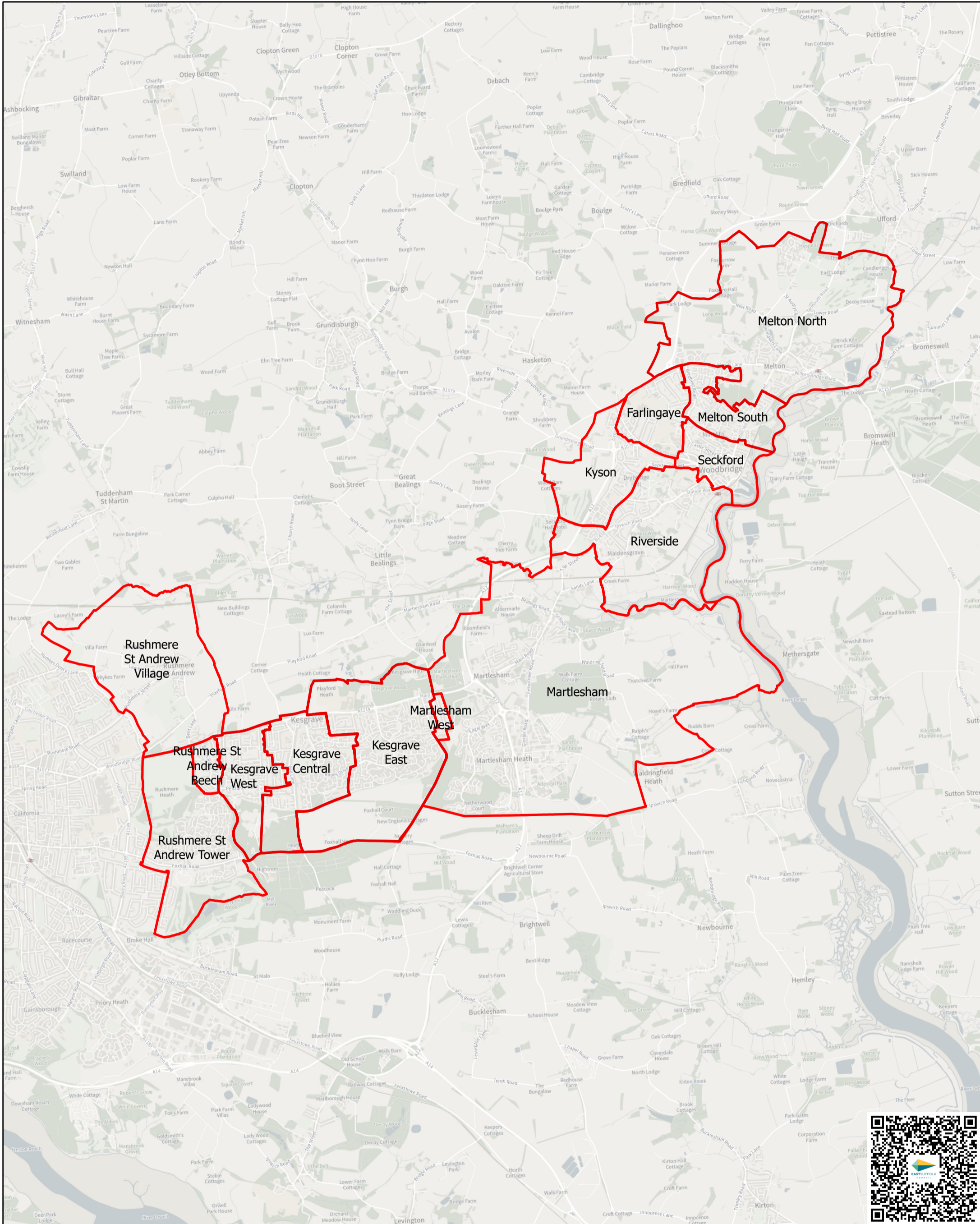


Rushmere St Andrew, Kesgrave, Martlesham, Woodbridge & Melton Parish Wards Pending 2027



Scale: 1:45,000

Date Printed: 01/12/2023

© Crown copyright 2023 AC0000814647

You are permitted to use this data solely to enable you to respond to, or interact with, the organisation that provided you with the data. You are not permitted to copy, sub-licence, distribute or sell any of this data to third parties in any form.

