

North Wall Toe Piling Phase 2

Southwold, Suffolk

Update – week commencing 12th May 2025

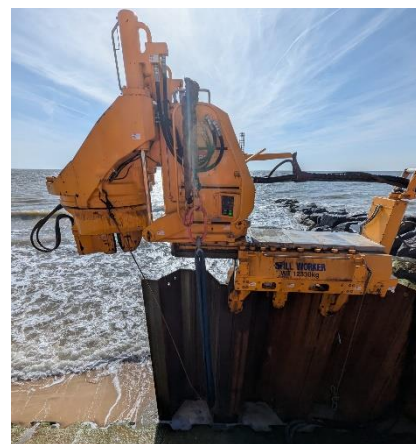
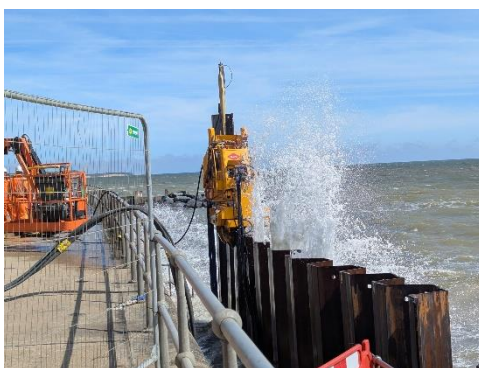
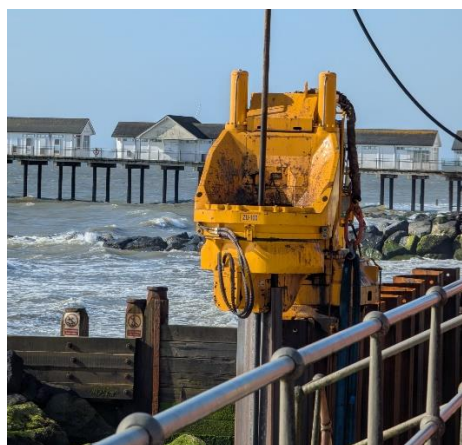
Following on from our most recent updates, please find below some additional information about the works progress. Please do get in touch if you have any concerns or need further information.

- Deliveries of the steel sheet piles have been received.
- Early in the week wind speeds and sea conditions exceeded safe working conditions for pile installation. Following an improvement in conditions, piling has recommenced at the programmed rate of installation, with a total of 33 full length piles now installed safely.

Works taking place from Monday 19th May:

- Further deliveries of the steel sheet piles.
- Continuing to install the steel sheet piles.

Photos below showing the silent press piler installing the steel sheet piles.



Contact us

Coastal Management service, Riverside, 4 Canning Road, Lowestoft, NR33 0EQ

If you would like this factsheet in another format, please let us know by emailing:

coastalmanagement@eastsuffolk.gov.uk

Follow us on social media

X: @EastSuffolk

Facebook: @EastSuffolkCouncil

Instagram: @eastsuffolkcouncil

www.eastsuffolk.gov.uk