



**November/December 2016**

It is the season where nature slows, some birds leave for warmer climes and some join us. Some of us say goodbye to friends and family and others seize precious moments. It is a season where our monthly newsletter is kept short and covers two months and the Steering Group wishes all Forum Members all the very best in the close of the year and the opening of the new.

This year has brought some big changes globally and locally and with that has increased the ever present uncertainty to what the future holds for us as humans, our society and for the environment that we are but one part of.

### **Quick global environmental recap:**

**A bit of good news?** Research results published in Science indicate that while volcanic eruptions in 2015 slowed the shrinking pattern of the stratospheric ozone 'hole' over all it looks like it is still shrinking. This improvement has occurred since the Montreal Protocol of 1987 and the subsequent phase out of the chlorofluorocarbons linked to the thinning of the ozone layer.

**A step in the right direction?** At the Paris climate conference (COP21) in December 2015, 195 countries adopted the first-ever universal, legally binding global climate deal. To enter into force, at least 55 countries representing at least 55% of global emissions had to deposit their instruments of ratification. This was achieved and on 4 November 2016, the Paris Agreement entered into force [http://unfccc.int/paris\\_agreement/items/9485.php](http://unfccc.int/paris_agreement/items/9485.php) .

**Something to galvanise us all?** This year's [Living Planet Report](#) reminded us that Wildlife populations declined on average by 58 per cent between 1970 and 2012 and that our aspirations of a just and fair society marked by good health and prosperity for all will become increasingly challenging as the natural resources we rely on for this come under ever more pressure. Action now is recommended.



**GREEN  
PRINT**

## **Quick global environmental recap continued**

**A clear need for action?** Data for 2.4 million items of litter collected through over 73,000 volunteer hours during the period 2005-14 were studied by a PhD student at the University of Exeter. They found that some types of litter increased significantly over the period, and recommended that urgent action should be taken to tackle them. The items of litter that had significantly had increased include small plastic fragments, plastic food packaging, wet wipes, polystyrene foam, balloons and large fishing nets. <http://www.sciencedirect.com/science/article/pii/S0048969716325918>

**One response** Natural England (NE) released Conservation 21. As the Government's statutory adviser for the natural environment in England, Conservation 21 sets out how NE will work to protect England's nature and landscapes for people to enjoy and for the services they provide, in support of Defra's ambitions for the environment. Conservation 21 can be viewed [here](#).

**Another response** Remember SCDC and WDC banned sky lantern and balloon releases on our land in 2014 with support from the Greenprint Forum. Since then Cardiff Council, West Norfolk Council, and others have also banned their release on land hired from them.

**Remember this response that we joined others in calling for?** From 5 October 2015, large shops in England were required to charge 5p for all single-use plastic carrier bags. They are required to report certain information to Defra, and they provide other information on a voluntary basis. A drop from 7.64 billion single-use carrier bags issued in England by the seven main retailers over the full calendar year to just 0.6 billion single-use carrier bags in the six months from October 2015 to April 2016 shows a very substantial fall in the number of single-use plastic bags issued by these seven main retailers. [www.gov.uk/government/publications/carrier-bag-charge-summary-of-data-in-england-for-2015-to-2016/single-use-plastic-carrier-bags-charge-data-in-england-for-2015-to-2016](http://www.gov.uk/government/publications/carrier-bag-charge-summary-of-data-in-england-for-2015-to-2016/single-use-plastic-carrier-bags-charge-data-in-england-for-2015-to-2016)

**The National Tree Safety Group (NTSG)** is composed of a number of organisations with an interest in tree risk management. The group came together in August 2007 to discuss the need for a nationally recognised approach to tree safety management. NTSG's guidance "Common sense risk management of trees" is for anyone involved in tree safety management. There are three documents



**Quick local environmental recap:**

[Suffolk Biodiversity Information Service](#) (formerly the Biological Records Centre) was ranked 7th out of 166 data providers a fitting tribute to its staff team and volunteer recorders. The NBN Data Assessment is now online [here](#). This creates a valuable evidence base for policy and decision makers.

**Suffolk Coastal District Council** is in the process of moving into East Suffolk House. There is furniture that is easy to move and adjust to extend its useful life. Offices that have the latest technology to make ‘electronic by default’ and ‘video conferencing rather than travelling’ a more realistic ambition. An electric pool car and charging facility to bring us into the 21st Century. Pool cars, pool bikes and the recycling, LED lighting and good insulation you would expect from any new build now. Attempts have been made to sell all old furniture and other equipment to reduce the amount going to waste with reasonable success.

**The Green 20** We have been very pleased to be able to support the hard working volunteers of the Friends of Parklands Wood, Wild Boyton and Blyth Woods Trust through our Green 20 fund. This was provided by the East Suffolk Partnership and Suffolk Coast & Heaths AONB Sustainable Development Fund. There is now a further chance for charities and community groups to get up to £500 as long as you can spend it and report back by the end of Feb 2017. So if your group is sitting on a wildlife project that you haven’t been able to progress yet do get in touch a.s.a.p. via [greenissues@eastsuffolk.gov.uk](mailto:greenissues@eastsuffolk.gov.uk).

**Suffolk Biodiversity Information Service News** is available on [https://issuu.com/suffolkbis/docs/sbis\\_newsletter\\_autumn\\_2016](https://issuu.com/suffolkbis/docs/sbis_newsletter_autumn_2016)



**Welcome to Parklands Wood**

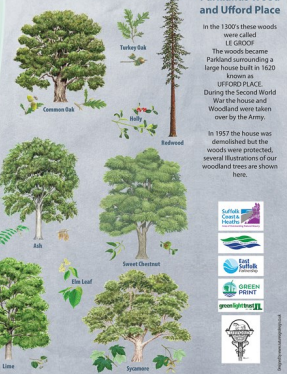
The Woods during World War 2  
A unit of the Special Ammunition Development Establishment was based in the area and worked on developments for military vehicles and tanks. When the Army departed, their huts were converted into accommodation for local families. The huts were eventually replaced in the late 1950s by the houses in Parklands. The remains of the foundations of the huts and interconnecting concrete paths can still be seen in the woods today.

Present Day  
Ufford Parish Council (UPC) purchased the 8 hectare wood from Suffolk Coastal District Council in 2014. The Friends of Parklands Wood (FPW) are a group of volunteers who were formed to manage and look after the woodland for public access and enjoyment. The FPW have worked with the Forestry Commission and the Greenlight Trust on behalf of UPC to develop a sustainable management plan for the woods. The clearance of undergrowth and some Sycamores is resulting in the emergence of fine specimens of Oak, Chestnut and Lime. This work also encourages a broader bio-diversity of ground cover species, insects and bird life.



**History of Parklands Wood and Ufford Place**

In the 1930s these woods were called 'The Green'. The woods became Parklands surrounding a large house built in 1820 known as UFFORD PLACE. During the Second World War the house and Woodland were taken over by the Army. In 1957 the house was demolished but the woods were protected, several illustrations of our woodland trees are shown here.





**GREEN  
PRINT**

### [The Suffolk Coast Forum](#)

The latest edition of the [Flood and Coast News](#) is now available, [click here](#) for an insight into the breadth of activities undertaken by the Suffolk Flood Risk Management Partnership and Suffolk Coast Forum members.

### [EDF Energy](#)

Stage 2 Consultation on the proposals for a new nuclear power station at Sizewell began on 23 November 2016. Responses to their updated plans need to be received by 03 February.

### **Upcoming Events**

Proposed dates for Forums (please alert me to any major clashes)

Monday 27th Feb 2017 – 7pm - 9pm

Monday 3rd July 2017 – 7pm - 9pm

Monday 25th September 2017 – 7pm - 9pm

Please send me dates and details of the environmental/community activities you are planning in 2017—one so I can avoid clashes where possible, link in where your aims match ours and two so that where you want a wider audience/more arm power I can promote.

Remember if at anytime you want to include an environmental article to send to our membership of just under 200, cover a particular topic or indeed if you want to be removed from the mailing list—just email [greenissues@eastsoffolk.gov.uk](mailto:greenissues@eastsoffolk.gov.uk).