

### Editor's comment

This edition is the final team effort for Deborah Wargate, Magnus Monahan and Eli Sanyari the Greenprint Forum paid Intern and Graduate. Magnus returns to his studies and Eli onto the next phase of his placement. Working with them and benefiting from their fresh ideas and energy has been a joy. Young people are not only our future, they are our inspiration and drive now. This edition includes: sharing to cut waste, tackling rural crime, social enterprise, buying local low carbon flowers, travel updates, litter, compost and more.

Thank you to all who have contributed and remember this monthly e-newsletter is most interesting when you are helping inform its content. Email [greenissues@eastsoffolk.gov.uk](mailto:greenissues@eastsoffolk.gov.uk) with action you are taking towards our vision.

You are welcome to share and use content. The editor makes no claims or promises about the accuracy, completeness, or adequacy of the contents of this newsletter and expressly disclaims liability for errors and omissions.



### Felixstowe Borrow Bags

Borrow Bags is a new project running in Felixstowe to help cut back on plastic bags. It was started by Gemma Smith who, like many of us, was keen to make a difference in tackling plastic waste. Inspired by the likes of David Attenborough's Blue Planet and seeing the work of local groups such as Plastic Free Felixstowe, Gemma started to shop more locally and cut down on plastic. Having forgotten to take a bag with her on a couple of occasions she came up with the idea for borrow bags.

The scheme works by having re-usable bags available at shops for customers to use when they forget their own. Once they have finished with the bag, the customer simply returns it next time they visit one of the participating shops. The bags have all been stitched by volunteers in the borrow bag group including help from St John's Church and the BASIC Life Charity. The Wildlife Gadget Man Jason Alexander has also been helping to promote the scheme. So far around 10 local shops have signed up and bags are now available in four local Co-op supermarkets too. As well as simply reducing plastic bag use, the project also aims to encourage attitudes of sharing within the community. The group are always looking for more people to help with stitching the bags so if you can lend a hand you can get in touch with Gemma on 01394 286652.



## Working hard to help tackle rural crime in Suffolk

Suffolk Constabulary has a small but dedicated team determined to help rural communities tackle wildlife and rural crimes.

Rural crime is defined as any crime of an agricultural, livestock, wildlife or heritage nature.

The team has an Inspector, a Sergeant, two Police Constables and three Special Constables. In addition there are seven police officers on the force who have also been trained to tackle wildlife crime. They use 4x4 vehicles, which are marked up in rural crime livery, as well as a small all-terrain vehicle (ATV). If needed they have access to drones (small unmanned surveillance aircrafts) to help with intelligence gathering and operational policing.

The team's current priorities include rural thefts (machinery / plant / diesel and technology such as GPS equipment), hare coursing, poaching, raptor persecution, damage to habitat, policing of hunts and heritage crime, including theft of lead from churches. The team also deals with badger baiting, stag hunting with dogs and other unlawful activities which can cause damage to fields, property and vehicles. The team are also trained in CITES (Convention of International Trade in Endangered Species) offences, such as illegal ivory, Rhino horn etc, as well as live specimens of illegal animals. It is also noted that there is a clear link between the aforementioned crimes and serious organised crime groups who are involved with other criminal activity such as drugs, trafficking and slavery.



in partnership





Tackling theft of oil, diesel, metals, fertiliser, plant and equipment from agricultural land and buildings and keeping a watchful eye on isolated farm properties with older residents, offering crime prevention advice where they can is also a significant element of the team's work. In addition they work with a multiagency task force to try to clamp down on fly-tipping, theft of agricultural equipment and plant.

Given the large area of land the team cover it is essential that they receive good intelligence from the local community.

**When to report:** If you have been a victim of rural crime or see rural or wildlife crime taking place

**What to report:**

- Date, Time, Location
- Are the suspect/s alone or in a group?
- Are they trespassing?
- Do they have equipment with them?
- Do they have dogs or firearms with them?
- Where are they going?
- Where have they been?
- What do they look like?
- Have they any vehicles?
- What are the number plates and vehicle models?
- Can you safely get a photograph?

To find out more about the team: follow them on twitter @RuralCrimeSfk





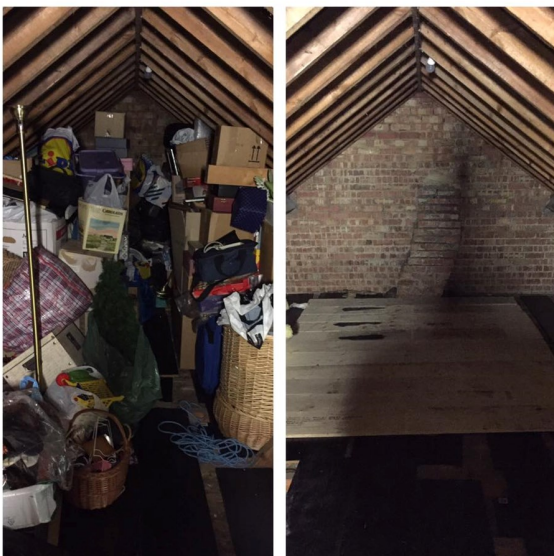
## Lofty Heights

Lofty Heights is a community interest company providing employment opportunities for young people while offering services such as: clearing out lofts, de-cluttering houses and ensuring homes are prepared for hospital discharges.

Lofty Heights founder, Olive Quinton, set up the social enterprise to tackle two issues she came across whilst working as Health Improvement Officer for Suffolk Coastal District Council.

Fuel poverty is a big issue for many vulnerable and older people and one way of tackling this is through improved loft insulation. A big barrier to people taking advantage of this is lofts being full of stuff that provides poor insulation and an inability to clear it out. The difficulties vulnerable young people face when trying to find employment is another challenge. Lofty Heights found solutions to both of these issues by employing young people to clear out lofts.

The team works with the client to sort out loft contents into things to be recycled/sent to energy from waste, items that can be donated to charity or sold on and items to be kept, such as those with sentimental value. The team also works with Loft Zone to provide loft storage facilities if needed.



The team can also de-clutter homes, help people who have a tendency to hoard or who might have become overwhelmed for a variety of reasons. Through this service, they have helped to prevent evictions, reunited families and got homes back to a state that will allow other services in to help.

Lofty Heights youth employment programme starts with a 5 week training and volunteering scheme from which 5 or 6 young people are offered work experience and then 3 are offered full time employment. The latest training scheme will start in September.

Further information on the services offered is available on the website- [www.lofty-heights.org/](http://www.lofty-heights.org/)



in partnership



## Participation

**42** Organisations  
took part in the survey



**3746** Total of responses  
were received

## Suffolk County Council 2018 Travel Survey

Results are live. The key findings from those responding are:

- 1.3% drive a hybrid or plug in electric car. Cost and charge point concern being the key reasons for not driving one.
- 33% use sustainable transport modes to get to work.

How is Suffolk County Council able to help?

- Repairing highways using a risk based approach [www.suffolk.gov.uk/roads-and-transport/highway-maintenance/repair-criteria-for-highway-defects/](http://www.suffolk.gov.uk/roads-and-transport/highway-maintenance/repair-criteria-for-highway-defects/)
- Providing information online — [www.suffolk.gov.uk/roads-and-transport/](http://www.suffolk.gov.uk/roads-and-transport/)
- Applying for funding and working with others to aid the provision of charge points in locations where they are most likely to be used —keep reading this newsletter to find out more as Countywide plans develop
- Providing advice on travel planning—[www.suffolk.gov.uk/planning-waste-and-environment/planning-and-development-advice/travel-plans/](http://www.suffolk.gov.uk/planning-waste-and-environment/planning-and-development-advice/travel-plans/)



Pot holes represent a danger to cyclists and other road users. Report them on: <https://highwaysreporting.suffolk.gov.uk/>  
[Cycling UK](http://www.cyclinguk.org/) reported in March 2018 that 390 people have been killed or seriously injured by pothole related incidents in the last 5 years.

## First Report of the Commission on Travel Demand

The Commission on Travel Demand has published its first report, entitled “All Change”. The report contains many interesting findings on how our travel patterns are changing and what might be in store for the future. The headline results are that, as a nation, we are travelling less and that this trend is longer than the recession or the advent of broadband and mobile internet. Per person we are making 16% fewer trips than in 1996, spending 22 hours less travelling than in 2008 and travelling 10% fewer miles than 2002. While distances travelled by car have been decreasing there has been a big increase in rail travel and cycling.

[www.demand.ac.uk/wp-content/uploads/2018/04/FutureTravel\\_report\\_final.pdf](http://www.demand.ac.uk/wp-content/uploads/2018/04/FutureTravel_report_final.pdf)



in partnership



## Kirkley People's Forum

The Kirkley People's Forum is made up of a group of local people who care passionately about the place they live. They are working hard to address residents' concerns and to make Kirkley a better place to live, in partnership with Community Action Suffolk and with funding help from People's Health Trust. The group is one of many Lowestoft organisations harnessing local pride in the community and increasing aspirations.

Kirkley is an area of high deprivation and relies on the strength of the community and help from voluntary groups such as the Kirkley People's Forum to make change. The Kirkley People's Forum was set up as a part of the community led project the Local Conversation, which empowers residents to discuss and address community concerns.

One of the Kirkley People's Forum's most successful events was the big Kirkley Clean Up in April 2018, which saw 50 residents across Kirkley make an effort to rid the area of litter and waste. By the end of the day, the community had filled four skips, collected an impressive 1.5 tonnes of scrap metal and had nearly 50 cars dropped waste items off to be collected.

Most recently, volunteers Matthew Grafton (Community Development Worker) and Dulcie Flegg joined graduate project officer, Eli Sanyari on a litter pick lasting over an hour around the Waveney District Council Offices and to the end of Kirkley Rise. In just this small area, they collected five bags of rubbish, with much of their time being taken up collecting cigarette butts which covered every street. The most unusual find of the day was what they suspected to be fairing from the side of a motorbike. They also found a destroyed traffic cone and the most disgusting item of the day was a pile of used tissues.

The Kirkley People's Forum will be attending the Greenprint Forum's Plastic Action and litter pick event at the Kirkley Centre on September 6th where they will be hosting a stall in which you can find out more about what they do and any upcoming events.

If you'd like to find out more about our event on September 6th please email  
[greenissues@eastsoffolk.gov.uk](mailto:greenissues@eastsoffolk.gov.uk)

If you'd like to get in contact with the Kirkley People's Forum you can message them on Facebook:  
[www.facebook.com/kirkleypeoplesforum/](https://www.facebook.com/kirkleypeoplesforum/) Or you can call 07391 419916



*Matt Grafton and Dulcie Flegg. Picture: Eli Sanyari*

## Your questions from recent events answered:

### Master Composters

- Why are all the worms in my compost bin going into the lid?

Worms take in oxygen through their skin. If your compost is too moist (squeeze it and if liquid runs out it is too wet) they run the risk of drowning and their moving to the lid may be to ensure this does not happen. If the compost does seem too moist you can add more coconut coir, cardboard or scrunched paper (the odd egg carton left whole can help create air pockets). If it is too dry they will also seek to go where there is moisture and due to condensation the lid is likely to be quite moist. If this is the case add more wet materials like melon or a splash of water.

Or it could be the mix of food isn't quite right for them—in this case experimenting with the mix could help

Too many citrus fruits, onions and tomatoes can make the mix too acidic

Too much grass could be adding too much nitrogen to the mix

Too little nutrients and they will be looking to move elsewhere

Too much white paper could be adding too much bleach and causing irritation

If you love worms visit [www.earthwormsoc.org.uk/](http://www.earthwormsoc.org.uk/)

### Plastic Action Champions

Can plastic bags and films be recycled?

It is technically possible and at this moment in time the Recycling Centres in Suffolk are accepting low-density polyethylene (LDPE) bags - resin ID code 4: plastic bread bags (shake out), plastic freezer bags, plastic magazine and newspaper wrap (type used for home delivery only) and bubble wrap. Polyprint, Earl Road, Rackheath Industrial Estate, Rackheath, Norwich, NR13 6NT also accepts these and actually recycles them onsite. The full list of accepted items can be found on [www.recyclenow.com/what-to-do-with/plastic-film](http://www.recyclenow.com/what-to-do-with/plastic-film)

Of course the best option is to avoid where not absolutely necessary to prevent other wastage (such as food). This is because it is hard to tell from looking at a bag what material it is made from and because the value per tonne varies from a cost of up to £80/tonne for it to be further sorted into types that have value to up to £300/tonne paid for high quality clear (i.e. no print) with no contamination (e.g. food or other materials) LDPE.



## Events being run by members of the Forum which link to our vision

**Wednesday 5th September** Melton Picnic car park, 10am start

Volunteers needed to help with the Annual Rake Up. For more information contact [chris.ryde@eastsoffolk.gov.uk](mailto:chris.ryde@eastsoffolk.gov.uk), 01394 675283 Mob 07717 888723

Melton Riverside Amenity Area is situated beside the A1152 which runs east out of Melton to the north-east of Woodbridge. The site is used as a recreational area by visitors to the area and by residents of Woodbridge and Melton. It is regarded by the district Council as the gateway to the Suffolk Coast and Heaths Area of Outstanding Natural Beauty (A.O.N.B) lying just within this area. It also lies within the boundary of the River Deben Environmentally Sensitive Area (E.S.A) - as part of the River Valley's E.S.As. The annual rake up is a critical part of the management of the site and relies on volunteers under the guidance of Suffolk Coastal Norse.

**Wednesday 12th September** Woodbridge Library, 7:00pm for 7:15pm Admission Free—Refreshments  
Transition Woodbridge and Greener Rendlesham will be giving short presentations on the major themes in George Monbiot's 'Out of the Wreckage' book from followed by discussion.

- developing community
- an economics for all including the planet
- getting politics back to the people

*accessible for all, having read the book or not*

**Saturday 29th September 10am - 4pm** Oak Tree Autumn Open Day - enjoy a family-friendly tour of the farm and find out how you can get involved with the farm. Suggested donation £5 per adult for the tour. You can also purchase some Oak Tree goodies if you wish. Refreshments available.

[www.the-oak-tree.co.uk/blog/wp-content/uploads/2018/08/Autumn-Open-Day-A4-colour-posters.pdf](http://www.the-oak-tree.co.uk/blog/wp-content/uploads/2018/08/Autumn-Open-Day-A4-colour-posters.pdf)

This is also a chance to see the cut flowers the farm sells which they hope to have available until October and possibly even into November, depending on the weather. They are grown at the farm from seed and cuttings without chemicals. So there are no pesticides or herbicides used and no air miles! The flowers are freshly picked to order, have a very low carbon footprint and are bee-friendly.

[www.the-oak-tree.co.uk/low-carbon-flower-shares/](http://www.the-oak-tree.co.uk/low-carbon-flower-shares/)





## Reminder: Consultation on the Suffolk Coastal First Draft Local Plan runs from Friday 20<sup>th</sup> July to Friday 14<sup>th</sup> September 2018 (17.00).

### Have you switched on to LED yet?

With LED lights offering the potential to significantly reduce energy use and associated costs, Business Efficiency East Anglia (BEE Anglia) are supporting businesses in Suffolk & Norfolk to identify the potential savings in making the switch – as well as helping them to apply for grants towards the cost of purchasing and installing LED lighting.

Lighting accounts for 20% of all the energy consumption in the UK according to latest figures from The Carbon Trust - making it a significant component of the nation's energy bills. For a building, the Carbon Trust suggests that energy consumed by lighting can rise to 40%. With the price of LED lights dropping significantly in recent years and improvements in quality, they are a logical choice. LED lights use 80% less energy than most traditional bulbs - but it can sometimes be expensive for businesses to make the initial investment to upgrade.

Small and medium sized businesses in Norfolk & Suffolk can take the first step towards reducing their energy costs by getting in touch with BEE Anglia. With financial support from the European Regional Development Fund, BEE Anglia takes eligible businesses through a review process that can help to identify energy saving opportunities, like a switch to LED lighting.

Businesses can then opt to invest in projects that implement energy efficiency measures, with grants available up to a maximum of 28% of total eligible costs or £50,000, whichever is lower. BEE Anglia has already helped 74 businesses with grant funding of £348,586 contributing to energy efficiency projects totalling £1,285,049.

**Please don't wait to get in touch and discuss your project. BEE Anglia will come to a close in December 2018, so get that energy efficiency grant application in asap to make the most of the funding while its still available.**

Call 01473 350370 to find out more

The results for the AONB facilitated Beachwatch activity are in. They show: 35 litter surveys were carried out on 24 beaches covering 7.5km of Suffolk coast and estuaries; 806 volunteers took part, 14,110 items of litter were recorded and removed and that 75% of litter collected was plastic. Data gathered goes to help the Marine Conservation Society with their campaigns.

[www.suffolkcoastandheaths.org/volunteering/volunteering-learn-more/beachwatch/](http://www.suffolkcoastandheaths.org/volunteering/volunteering-learn-more/beachwatch/)





**Who we are**

For those of you that don't know, the Greenprint Forum is a voluntary network facilitated by Suffolk Coastal and Waveney District Councils to help deliver their [business plan](#). Specifically enabling community environmental action to improve lives and strengthen our economy. Whilst our focus is on east Suffolk anyone, anywhere can join for free to help inform and learn from our thinking. Please do be aware that we have one passionate part time staff resource (two days a week dedicated to this), a steering group of 12 who give of their knowledge while being active in their own communities/ organisations and all other effort is voluntary or requires funding to be gained to pay for it.

**How to contact us**

[www.twitter.com/GreenprintForum](http://www.twitter.com/GreenprintForum)

[www.facebook.com/GreenprintForum](http://www.facebook.com/GreenprintForum)

[www.eastsuffolk.gov.uk/environment/east-suffolk-greenprint-forum/](http://www.eastsuffolk.gov.uk/environment/east-suffolk-greenprint-forum/)

greenissues@eastsuffolk.gov.uk

01394 444747

