

Greenprint Forum newsletter autumn 2021

Since the last newsletter we've seen summer flash past and now autumn too is rapidly speeding by. During this season of changing weather we once again enjoy the annual transformation of the colours of the leaves on the trees and the emergence of beautiful fungi such as those below spotted by your secretary in Melton Riverside.

There is going to be a focus on farming at our next Forum event online – which will be held on Zoom on **Friday 19 November at 14:00. "Farming Today, Fit for Tomorrow"** will be an opportunity to hear from a range of speakers from the local and regional farming and growing sector who will share some of their initiatives in the field of sustainable farming. If you haven't already registered to join this event, you can do so by visiting [Greenprint Forum event registration - My East Suffolk](#)



New members welcome!

We always welcome new members who are interested in positive action for the environment in the community. Membership is free and open to all so if you are already a member please encourage others in your network to join, and if you have received or found this newsletter and are not yet a member why not join us. The easiest way is to go online and register via [Greenprint Forum membership form - My East Suffolk](#).

Read on for more, including: an introduction from Saxmundham Town Council's new Environmental Coordinator; a living churchyard in Bealings; updates on our small grants scheme Nature First; sharing Westerfield Railway Station with nature; a Beachwatch roundup; and support for farmers and landowners in the AONBs to do the right thing.



East Suffolk Greenprint Forum Nature First Small Grants Scheme



Following the launch of our small grants scheme [Nature First](#), the volunteer panel, made up of members of the Steering Group have so far met twice, in August and October 2021, to consider applications and were pleased to approve a total of eleven projects with grants totalling £8265.19, as follows:

- 1 Greener Waldringfield **£365**
Community Hedgelaying Training: course in hedgelaying for volunteer community hedgelayers to help create, restore and maintain healthy hedgerows in the parish of Waldringfield.
- 2 Lowestoft in Bloom **£414.95**
Pine Tree Nature Garden: creation of a nature garden at St Margaret's allotments site in Lowestoft to which children from local schools will be invited to discover wildlife, learn about where vegetables come from, and carry out activities.
- 3 Pathways Care Farm **£1000**
Growing and Learning Together: creation of raised beds and delivery via a 25 session course to teach pupils, parents and staff at Beccles Primary Academy about growing and harvesting vegetables organically, sustainably alongside nature.
- 4 Friends of Bungay Community Library **£555**
Courtyard Garden Wildlife: enhancing the courtyard garden to promote biodiversity with more habitats and fitting bird feeders and nest boxes with wi-fi cameras to engage users of the library with a live stream of birds nesting and feeding in the garden.
- 5 Aldeburgh's Amazing Swifts **£1000**
Thomas Mills School Swift Project: installing 10 double swift boxes, 6 cameras, 1 swift call system and 1 air quality sensor to Thomas Mills High School in Framlingham. This will enable students to appreciate swifts behaviour by watching and learning.
- 6 Jetty Lane CIO **£1600**
Rewilding Jetty Lane in partnership with Transition Woodbridge: active rewilding of the land at the site of the future Jetty Lane Centre to ensure biodiversity is protected and benefits in the intervening time and provide a useful addition to the network of wildlife corridors in the town.
- 7 Friends of Dip Farm **£735.23**
Community Engagement Putting Nature First: enhancing community use of the Dip Farm Green Space in Gunton by creating a small orchard and installing a number of bird and bat boxes and provide an enduring learning resource for your people to engage with and appreciate our natural environment.
- 8 Saxmundham Town Council Green Team Volunteers **£510**
Green Team Volunteer Equipment: to purchase equipment for the Green Team being recruited by the Town Council's new Environment Co-ordinator to enable work parties to carry out a diverse range of works to enhance land in the town for wildlife and people.



East Suffolk Greenprint Forum Nature First Small Grants Scheme (continued)



9 Greener Sax

£488

Save our Hedgehogs: a town-level campaign to coordinate the efforts of local Hedgehog Champions and engage with schools and the wider community of Saxmundham to promote action to map and increase the number of Hedgehog Highways in the town.

10 Tuddenham St Martin Parish Council

£690

Tuddenham Swift Group: providing additional nesting opportunities for the local swift population by working with householders to install 20 new swift nest boxes in the parish.

11 Oak Tree Community Farm

£917.01

The Oak Tree Wildlife and Education Group: setting up a wildlife educational area in the corner of this community farm in Rushmere St Andrew for pre-school and school age children the focus of which will be to study and understand the wildlife on the farm through pond dipping, bug hunting and identification of the flora and fauna found.

The small grants scheme will be relaunched in early 2022 so in the meantime if your community or organisation are planning a project that will directly benefit or promote nature and biodiversity in east Suffolk why not put some thought to putting an application in. For guidance on making an application please see the guidance notes: [Nature-First-small-grants-guidance-for-applicants.pdf](https://www.eastsuffolk.gov.uk/nature-first-small-grants-guidance-for-applicants.pdf) ([eastsuffolk.gov.uk](https://www.eastsuffolk.gov.uk))

River Rubbish Rescue



If you're reading this newsletter then the chances are you already do what you can for the environment even when it doesn't directly benefit your own community – as demonstrated by [Plastic Action Champion](#) Louise from Lowestoft, and her friend Ruth, who simply couldn't leave behind some of the litter they found floating in the river whilst enjoying a bit of canoeing during their holiday in Royal Leamington Spa.



Introducing Amy Rayner, Environment Co-Ordinator for Saxmundham Town Council

Hello! I am Amy the Environment Co-Ordinator for Saxmundham Town Council. I have been employed to work with the community to improve the Town Environment for people and wildlife. If you are part of an organisation based in Saxmundham already working on these kinds of projects I would love to hear from you and find out more about the important work you are doing.

I am new to my role but not to Sax and I am really excited to be joining the Town House Team. I have worked for a long time within the ornamental horticultural industry, I am an amateur beekeeper and am enthusiastic about wild plants and creatures.

Since my appointment earlier this year and thanks to funding for equipment from the Greenprint Forum's Nature First small grants scheme and from Saxmundham Town Council we have been able to get our Green Team working parties up and running. I'd like to say a big thank you to all the wonderful Green Team Volunteers who have so far been helping with maintenance of the Community Orchard on Memorial Field and pruning and tidying up Fromus Square. Thanks also to Charlotte and Leroy for help preparing and planting herbs and winter pansies in our Town Centre planters.

If you would like to meet new people and help work towards improving our green space for people and wildlife there are all sorts of tasks and activities to get involved with. For more information please contact me at amy.rayner@saxmundham-tc.gov.uk.

Amy Rayner, Environment Co-Ordinator, Saxmundham Town Council



Westerfield railway station wildlife garden

Station adopters are volunteers working within Greater Anglia's Station Adopter Scheme to create green spaces at railway stations. With funding from East Suffolk Council's local Community Partnership, the Westerfield Station Adopters have been able to clear an area of weeds and brambles to create a wildlife garden at Westerfield Station. The theme behind our garden is to recycle, reuse, recover and reduce waste, whilst creating a haven for wildlife. In October 2021 we were thrilled to receive Greater Anglia's 'Innovation and Environmental award for the current work that is being done at the garden: [East Suffolk Lines Station Volunteers Honoured at Awards Ceremony – East Suffolk Lines](#)

Key features of the garden include:

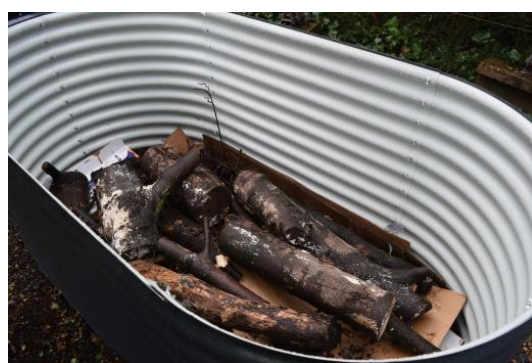
A log pyramid and dead hedge and loggery inspired by the RHS 'Wild about gardens' scheme to pledge a patch to beetles. These make the perfect habitat for beetles including stag beetles.



A bug habitat created from reused items including a Gabion basket filled with rubble cleared from the site. The living roof is made from a sedum mat.



Raised Hugelkultur beds. These contain layers of leaf mulch, topsoil manure and compost on top of decaying wood, cardboard and twigs. The rotting wood hosts beneficial fungi, insects, worms and microbial growth that will provide nutrients for the plants we put in. We are due to start planting in the coming months.



Sandy Burn, Station Adopter, Westerfield



Greenprint Forum Beachwatch at Felixstowe and Pakefield

This year, we organised two Beachwatch surveys under the auspices of the Greenprint Forum, being joined by Plastic Action Champions volunteers as well as other members of the Greenprint Forum and the local community at both Pakefield and Felixstowe.

Like Laurena and her team, what we found was that whilst our beaches may look free of litter superficially, when you look closely there are lots of small particles and these still need recording and removing where possible.

Find out more about what we did and what we found in our full report:

[Greenprint Forum Beachwatch Report 2021.](#)



Find out more and get involved:

The Marine Conservation Society is an important national data recording, reporting and campaign organisation incorporating citizen science. If you're organising a beach clean, why not incorporate a Beachwatch survey as part of your activity to help the MCS with their data-driven work. You can find out how to get involved in Beachwatch surveying here: [Marine Conservation Society | Home \(mcsuk.org\)](https://www.mcsuk.org/)

Kesgrave Town Council action for pollinators and the climate emergency

Kesgrave Town Council is working in partnership with [Groundwork East](#) on a climate change initiative. To build understanding on how the town can reduce its carbon footprint they are asking residents to complete a 5 minute survey online Visit www.kesgrave.org.uk/climatechange/ to complete the survey and get tips on saving energy at home.

The Town Council have also recently completed phase one works on the centre circle of Pergola Piece. The Town Council received a grant from East Suffolk Council and received help and advice from the Kesgrave Conservation Group. The area has been planted to attract bees and insects and covered with bark. An additional bin has also been installed by the Town Council. Thank you to all the volunteers on this project and residents who have been watering the new plants. Further works will be carried out in liaison with East Suffolk Council who own the land and will include managed wildflower areas.



Joanna Abbott, Town Clerk, Kesgrave Town Council





Little Bealings Borrowers



In the September sunshine a few families and several children from Bealings Primary School were exploring the long grass in Little Bealings churchyard, on their knees collecting wildflower seeds in plastic pots. Waves of crickets were hopping away. Two of the children came running back saying they'd found a wasps' nest at the base of a tree. Everyone wanted to see! When children are free to explore it's great to share in their excitement at each new discovery. At the end of the session, we looked at all the different varieties and shapes of the seeds we'd collected and asked the question 'What made you go WOW?' We wondered how something so small can grow into something so big, without us really having any part to play.

The following week we had clipboards in one hand and mobile phones in the other for a BioBlitz – to record species that have already made their home in the churchyard. Among all the crickets, we also found perfectly camouflaged spiders, harvestmen, ladybirds and snails. We could identify them with a phone App and keep a log online, so that we can build up a picture of biodiversity in the churchyard over time. Like many who visit the churchyard, we reflected on the beauty of nature, God the creator and his creation.

Our group, 'Little Bealings Borrowers', was formed by Lightwave in partnership with East Suffolk Community Partnership, Bealings School and Little Bealings Church. Our strapline is 'Do something small to be part of something big'. We're helping children and their families to see that caring for the natural world begins in a small way, on our doorstep, near our home or school.

Little Bealings Church is part of the awards scheme [Eco Churches](#) and already actively managed by kind volunteers to benefit people and nature. As well as enhancing biodiversity in the churchyard, we'll have fun, discover new skills and learn together, which all benefits our physical, spiritual and mental health and well-being.

Building a hibernaculum to provide shelter for reptiles, amphibians and insects, involved a lot of digging which the children loved while the adults could have a chat! We learned that it's easier to build a hi-ber-nac-u-lum than to say it!

The group is for children of any age and their parents, after school on Wednesdays, 15:10 – 16:00 in Little Bealings churchyard. Please come and join us, we'd love to see you.

For more information, contact Ben Wale on 07769 183638, ben.wale@cofesuffolk.org

Ben Wale, Lightwave Hub Leader



Changing seasons, changing ways

As our season now turns to autumn the nights are drawing in and our landscape turns to yellow, orange and reds. Birds are appearing in our gardens hunting for food, and squirrels venture into our villages pinching the odd nut. It is a joy to see the changing environment and after the last couple of years it's reassuring that we see nature continue with her usual patterns.

However at this time of year we do traditionally see more garden bonfires and fireworks which can cause inconvenience for neighbours and in the case of fireworks, considerable distress for some people and animals, which can usually be avoided by simply telling neighbours of plans for a bonfire or fireworks in advance. As well as being courteous, this can give them the opportunity to take steps to mitigate any impacts.

A particular request I would always make of anyone planning a bonfire would be to check thoroughly the material destined for the bonfire for any animals, such as hedgehogs or even pets, that may be sheltering within. The best way to check for animals is to move the entire bonfire by hand just before lighting it.



These weeks running up to Bonfire Night are the ideal time for us all to share these important messages with others in our communities and networks. And please feel free to direct others to our full advice leaflet about bonfires: [Garden Bonfires](#)

And of course as this newsletter is issued we are on the cusp of COP26. This is a crossroads for us globally and our world leaders must get serious about meaningful change. In advance of parliament's second reading of the Climate & Ecological Emergency Bill I recently wrote to Defra to urge our government to take this opportunity to embed some of the principles of the Bill into our statute books.

Yes, we need to reduce our carbon footprint, but we also need to preserve the natural processes that remove the carbon from our atmosphere.

Yes, we need to recycle more, but also recycle better and consume less in the first place.

And yes, we need to plant more trees, but we need to care for and appreciate the trees we already have.

By thinking about making positive changes to the ways we live our lives, from recycling right, buying local food and making fewer journeys, we too are part of the solution and the smallest of changes we can make, really do contribute over time to the bigger picture.

Cllr James Mallinder, Cabinet Member for the Environment and Chair of cross-party Environment Task Group, East Suffolk Council



Farming in Protected Landscapes – supporting farmers and landowners in the AONBs

Defra has introduced the Farming in Protected Landscapes programme, which will run from July 2021 to March 2024. It will support farmers and landowners in both the Coast and Heaths, and the Dedham Vale, Areas of Outstanding Natural Beauty.



Through the programme, farmers and land managers can be supported to carry out projects that support nature recovery, mitigate the impacts of climate change, provide opportunities for people to discover, enjoy and understand the landscape and cultural heritage, or support nature-friendly, sustainable farm businesses.

This is a programme of funding for one-off projects covering these areas of work, not an agri-environment scheme. The programme is part of Defra's [Agricultural Transition Plan \(PDF\)](#).

Small grants of up to £5,000 are fast-tracked via the Suffolk AONB Team, larger grants are referred to a new Local Assessment Panel made up of interested organisations and farmers. We are actively encouraging applications so if you are a farmer or land owner and would like to know more please contact your AONB Officer via AONBFarmGrants@suffolk.gov.uk for guidance and application details.

More information is available at <https://www.suffolkcoastandheaths.org/managing/farming-in-protected-landscapes/> and there is also a webinar on 9th November 17:00-18:00 which we are holding in conjunction with Defra to discuss the application process. To register for the webinar please visit:

[Farming in Protected Landscapes: Making an application](#)

Lynn Eldrett, Administrative Support Officer for the Farming in Protected Landscapes Programme, Coast & Heaths AONB team

Funding for community climate action

Funding is available from The National Lottery to support communities to take action on climate change. Grants from £1,000 to £10,000 of National Lottery funding can be applied for to support initiatives in the following areas:

Food; transport; energy; waste and consumption; the natural environment.

The application deadline is on **18th November 2021 at 5pm**.

For more information, click on the link: [Together for Our Planet | The National Lottery Community Fund](#)

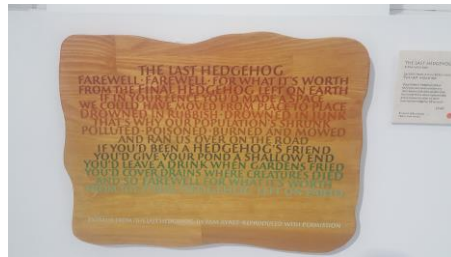
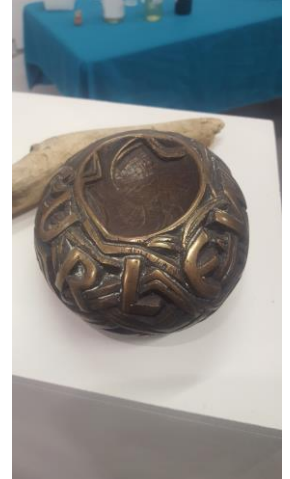


On a Knife Edge / Snape Marshes

[On a Knife Edge](#) is an exhibition with a message. Traditional letter carving has been used to highlight what it is we have at stake in terms of biodiversity.

On Thursday 29th October 14 members of the Greenprint Forum were treated to an educational demonstration of the art form by Master Lettercarver Eric Marland. Then our hosts Lynne and Karoline shared details of the apprenticeships and journeyman training run by the Lettering Arts Trust. This will help new artists to learn and perfect the skill of letter carving and keep this tradition alive.

The exhibition is only open until 7 November so if you want to visit you'll need to hurry!



Whilst we were at Snape we were also treated to a visit to the adjacent Suffolk Wildlife Trust nature reserve of [Snape Marshes](#) led by the SWT's Wild Learning Officer Charlie Zakss. Charlie and the SWT have also been working alongside the Lettering Arts Trust to run sessions, called "Wild Little Letters", for youngsters from east Suffolk primary schools. The inter-curricula sessions combined nature studies with literacy helping to give local children a greater awareness of their natural surroundings.

Whilst at the marshes we heard how the area has been enhanced to create a mosaic of thriving habitat types since the SWT took control of the land in 2009 thanks to legacy donations, with population of water voles being able to flourish thanks to a successful campaign to eradicate American mink from the reserve. We didn't see or hear the "plop" of any water voles plunging into the water, but we did learn how to look out for their presence by finding blades of grass nibbled at an angle of 45 degrees. Grazing by cattle and ponies help to stimulate a variety of grasses whilst controlling invasives and even creating opportunities for meadow pipits to nest in hollows created by the treading of the cows! Otters too are present here – which was proven to us on the discovery of one of their fishy-smelling "spraints" – left behind at one of their habitual crossing points (see next page for the delightful photo).



Snape Marshes (continued)

Lesley Walduck, the warden for the reserve, told us: "I think a lovely time for a visit to Snape Marshes would be when the spring migrants start arriving towards the end of April/beginning of May. There are whitethroats, sedge warblers, garden warblers, black caps, chiff chaff etc. and lovely wildflowers such as lady's smock which attract orange tip butterflies. We get nightingales too."

Green Snape provide opportunities for anyone who'd like to volunteer on practical conservation tasks at Snape Marshes, and also Priory Wood, which is leased by Snape Parish Council and managed by Green Snape. To find out more contact Green Snape directly via: info@greensnape.org [GreenSnape » Snape Village](#)



"Who dung it?"



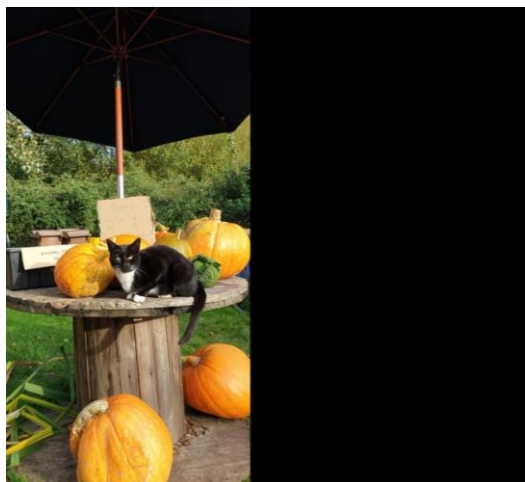
Whilst on the theme of volunteering, Charlie advises that the SWT are currently recruiting Wild Learning Team volunteers at Foxburrow Farm, Melton - these are volunteers to help the Learning Team with school visits, family sessions and Forest School sessions, working with all age groups. Volunteers may be recently retired, seeking to change career direction and try out something new, or seeking to increase confidence and experience. No experience is required at all and all training is provided. Anyone interested can contact either Charlie via charlie.zakss@suffolkwildlifetrust.org, or foxburrow.learning@suffolkwildlifetrust.org

<https://www.suffolkwildlifetrust.org/volunteering-opportunities/learning-and-events-volunteer-foxburrow-farm>

Eat your pumpkin!

We heard something scary about Halloween.... every year in the UK, 18,000 tonnes of edible pumpkin go to waste! There are lots of delicious ways to eat your pumpkin – the Food Savvy campaign have collated a menu of recipes to tuck into for inspiration – why not share these with others in your networks? The ideas range from curries, soups, crisps, pies and even loaves! [FOOD SAVVY—Pumpkin Recipes](#)

[Deben Community Farm Project](#) in Melton have a lovely way of using up donations of leftover pumpkins, as fodder for their many animals (though I suspect not the cat)!



Consultations

[Dell Road and Kirkley Rise, Lowestoft | Suffolk County Council](#) Suffolk County Council are seeking views on proposed improvements to provisions for active travel (walking and cycling) between Dell Road and Kirkley Rise, Lowestoft. Closes 8 November 2021.

[Heat network zoning consultation - Department for Business, Energy and Industrial Strategy - Citizen Space](#) BEIS are seeking views on proposals that envisage central and local government working together with industry and local stakeholders to identify and designate areas within which heat networks are the lowest cost, low carbon solution for decarbonising heating. Closes 19 November 2021.

[Call for Evidence - Labelling for Animal Welfare - Defra - Citizen Space](#) Defra are calling for evidence on the impacts of different forms of labelling. This will be used to inform any future policy proposals on labelling for animal welfare. Closes 6 December 2021.

Low Carbon Homes 23-25 November

There are huge commercial opportunities around retrofit in Suffolk plus the many socio-economic 'co-benefits' for householders. This event, hosted by the Suffolk Climate Change Partnership, is being held over three mornings as part of the commitment to work with local stakeholders in delivering a carbon-neutral Suffolk by 2030.

The online conference, 23-25 November 2021, [Suffolk – November 23 2021 – Low Carbon Homes](#) will bring together businesses, public sector leaders and training providers to explore the enormous commercial, environmental, public health and socio-economic benefits of retrofitting homes at-scale across Suffolk.



GREENPRINT FORUM VISION



Closing note from Editor

Thank you to all who have contributed and remember the Greenprint e-newsletter is most relevant when you are helping inform its content. Please email me at greenissues@eastsoffolk.gov.uk with positive action you are taking towards our vision and would like to share to inspire others—I will try and include wherever space allows and if I cannot fit it in the newsletter, or if it relates to an event or online session due to take place before the next newsletter is ready (the newsletter is roughly quarterly and the next one will be out around January/February) then I will wherever possible share via the Facebook page <http://www.facebook.com/GreenprintForum> and / or Twitter <https://twitter.com/GreenprintForum>. If you're not already following us on social media please feel free to do so and feel free to share any posts to your own networks.

You are welcome to share and use content. The editor makes no claims or promises about the accuracy, completeness, or adequacy of the contents of this newsletter and expressly disclaims liability for errors and omissions.