

THE SUFFOLK ENERGY-FROM- WASTE FACILITY

Siobhan O'Dell
Community Liaison Manager

07/08/2023



1.

SUEZ recycling and recovery UK





07/08/2023 | Suffolk energy-from-waste facility

Who we are

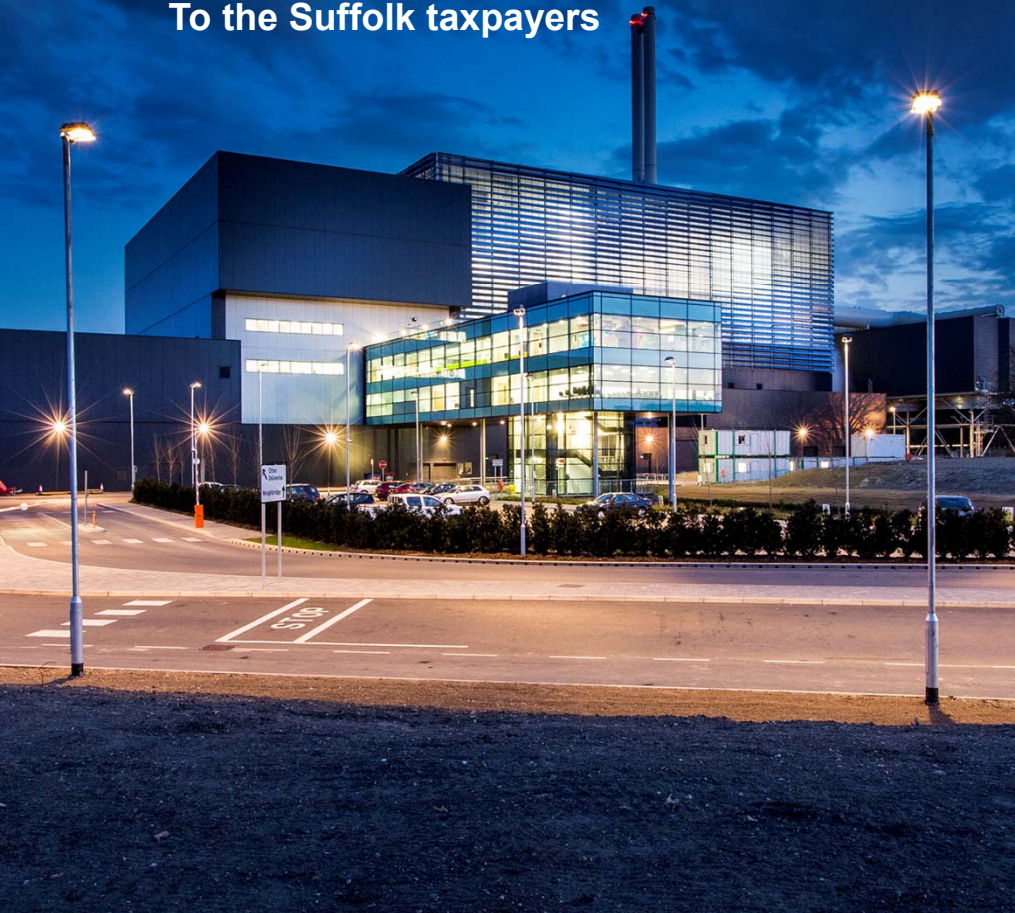
- SUEZ recycling and recovery UK employ over 6,000 people
- Established in 1988, we help reduce the environmental impact of customers waste by recycling & extracting value from it
- Over the course of a year, we handle 10 million tonnes of waste
- Guided by the vision to engineer a **society where there is no more waste**
- Our goal is to help create a **circular economy** in which nearly all waste materials are given a second life and **reused, recycled or recovered** for their energy content



Putting Suffolk's waste to good use

350 MILLION (£)
SAVING

To the Suffolk taxpayers



The Suffolk energy-from-waste facility

⇒ PARTNERSHIP

- Partnership between SUEZ recycling and recovery UK and Suffolk County Council
- £350 million savings to the Suffolk taxpayers

⇒ PROJECT OUTLINE

- Financing, construction and operation of a modern energy-from-waste facility
- 25 year PFI contract
 - **Procurement:** Autumn 2008 - October 2010
 - **Planning:** Spring 2010 - August 2011
 - **Construction:** November 2011 - December 2014
 - **Operation:** until November 2039



Putting Suffolk's waste to good use

2.

Waste in Suffolk An overview

Waste in Suffolk



Waste in Suffolk



| | | Collection* | Treatment* | Total* |
|------------------|---|-------------|------------|--------|
| Recycling |  | £26 | £0 | £26 |
| Residual |  | £26 | £43 | £69 |

*annual cost per household March 2022



We ONLY want these items in your recycling bin

Items should be empty, clean and dry
NO BAGGED ITEMS



Please NEVER put these items in your recycling bin

They will contaminate the recycling and
YOUR BIN WILL NOT BE EMPTIED

What goes in your recycling bin?

YES Plastics



Plastic bottles - empty, wash, squash and lid on



Plastic yoghurt pots, tubs and food trays



Bathroom and household cleaning with all tops on

YES Metals



Food and drinks cans



Aluminium foil and trays - roll foil into a ball



Empty aerosols - e.g. deodorant, air freshener

YES Paper/card



Paper, newspapers, magazines and junk mail



Cardboard, clean food packaging, boxes and cards



Books, paperback and hardback

NO Black sacks, plastic bags or wrappers



NO Food



NO Nappies



Put these in your rubbish bin

NO Glass



NO Textiles



NO Cartons eg. Tetra Pak



These can be recycled elsewhere - see back cover

NO crisp packets - polystyrene - pet food pouches - pill packs - toys - plant pots - tissues - kitchen roll - wipes - shredded paper - wood - hazardous waste

3.

The Suffolk energy-from-waste facility

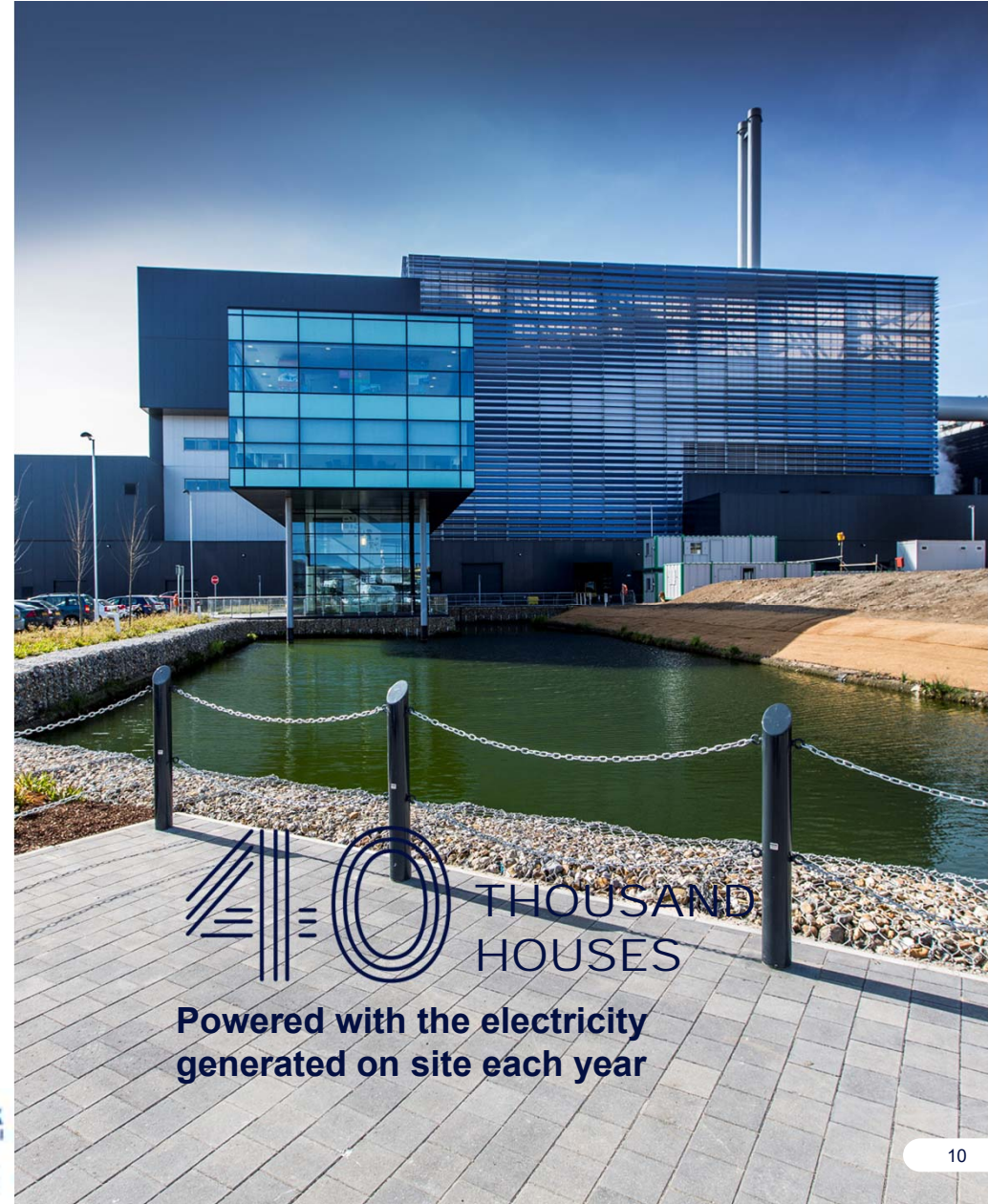
An overview



Key facts

⇒ A CHEAPER, GREENER SOLUTION TO LANDFILL

- Maximum turbine output of 26 megawatts
- Generates enough electricity for 40,000 homes
- Two line facility (two furnaces)
- Combined heat and power enabled
- 50 full time staff
- Visitor centre on site



Capacity of the facility

CAPACITY

295,000 tonnes per annum

Approximately 95 trucks per day

⇒ SOURCE AREA

The facility only accepts waste from the East of England

- 75% of waste comes from Suffolk
- The remainder comes from Norfolk and Essex
- Business as well as household waste



Biodiversity on site

⇒ LANDSCAPE

The site is home to many native species.

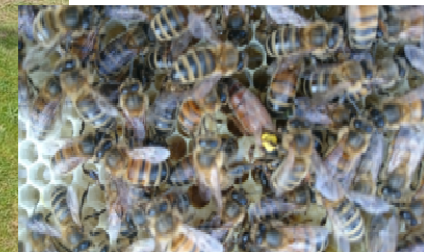
- Self seeding wildflower meadow
- Many large trees were not removed during construction
- Over 150 native trees have been planted since construction

⇒ PEREGRINE FALCONS

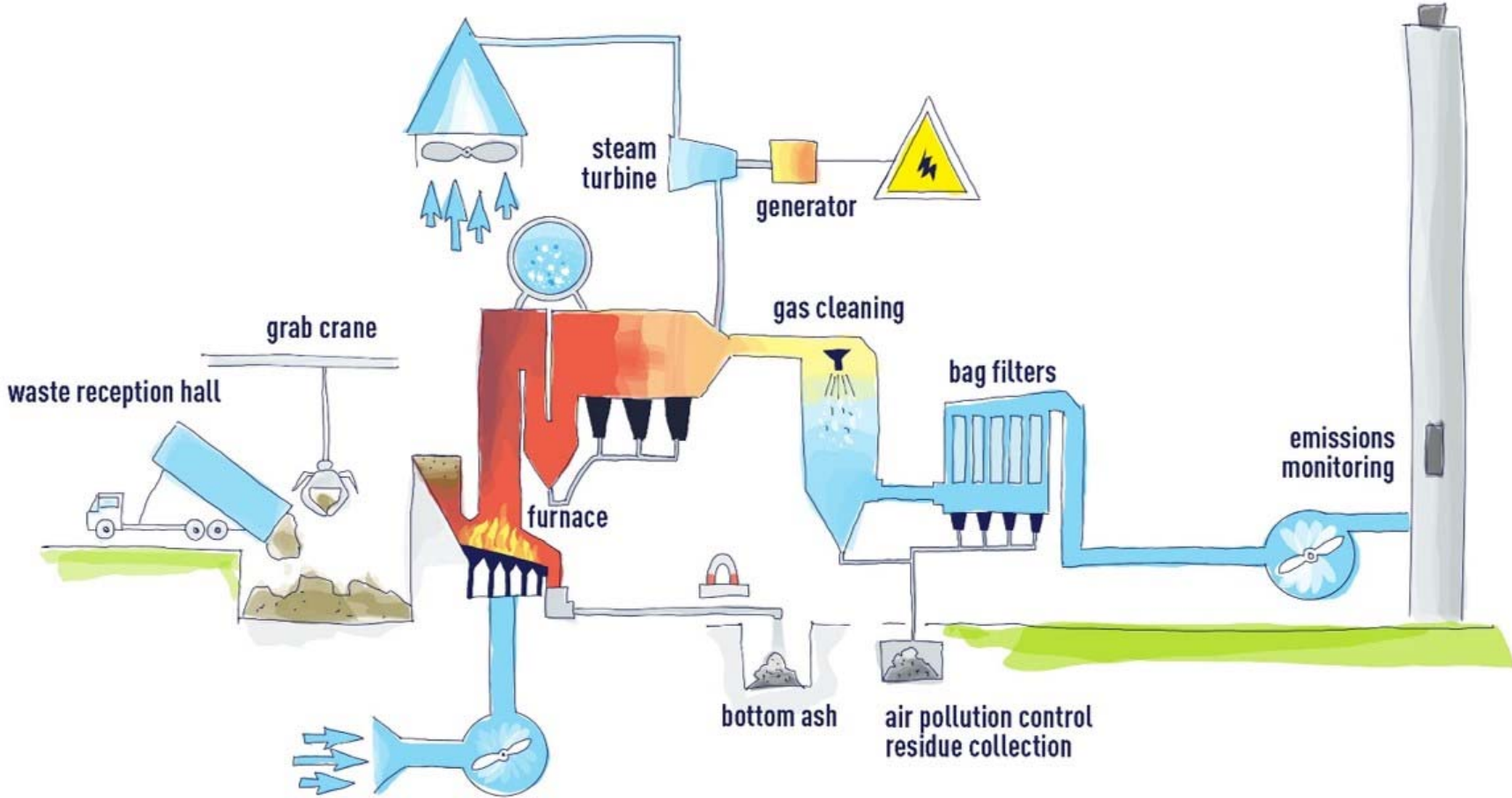
A pair of peregrine falcons have taken up residence at the site. The tall building mimics the cliff edges that the birds would naturally perch upon. In 2021 a nesting box was installed with 4 eggs laid in 2022.

⇒ BEEHIVES

The facility is home to a large colony of bees, situated in our wildflower meadow. The colony has grown from 60,000 to more than 200,000 across five hives.



The energy-from-waste process



The energy-from-waste process



The Martin grate



Turbine



Flue gas filters (socks)



Flue gas filters (socks)

QUESTIONS



Health and safety induction

Visitor induction



Visitor supervision

- All visitors are required to sign in at the start of their visit and when leaving the site
- This applies when visitors leave at any time, including for lunch
- You will be supervised by a SUEZ employee who is familiar with the site at all times.
- Please follow any instructions given.
- If you are unsure of anything, please ask.

Walkways

- Walkways are provided for your safety and must be used at all times
- Use recognised crossing points when crossing internal roadways
- The speed limit on site is 10mph and must be adhered to at all times. As the site is in constant use, visitors must be made aware that heavy goods vehicles use the traffic routes upon entry and exit. Extra care must be taken.

Accessibility and health conditions

- If you are blind or partially sighted, hearing impaired or mobility impaired, please inform reception to make us fully aware. This will enable us to assist you further and ensure that any additional controls required are put in place.
- Please be aware that there are **328 steps over 23 metres** on this tour.
- In the event of an emergency, you will be expected to descend 123 stairs.
- If you have health conditions which could affect you, please inform your SUEZ guide.
- Conditions could include:
 - pacemaker
 - vertigo
 - joint pain
 - hearing issues

Welfare and hygiene

- Toilets can be found on floors 1 and 2. If you need directions, please do not hesitate to ask.
- Please ensure that you wash your hands in the facilities provided after visiting the plant.
- Handling waste or removing any material is forbidden.
- Please ensure you wash your hands before eating, drinking or smoking.

Plant areas and PPE

- When in these areas, please ensure that you remain vigilant to any hazards displayed and stay with the group at all times.
- Legs must be covered to go on the plant tour.
- Personal Protective Equipment (PPE) is required on plant once you have crossed the green PPE line which runs in front of the tipping hall and boiler house. The following PPE is mandatory on site:



Eye protection



Hi visibility vest



Gloves



Appropriate footwear



Hard hat

Hearing protection

- Hearing protection is mandatory in the turbine hall and in the main boiler house during sootblowing.
- Ear plugs are available outside every door leading to the turbine hall and outside the control room on the second floor.



Mobile phones

- Do not use mobile phones whilst walking around site.
- We do not allow filming on site without prior agreement.
- If it is necessary to make or take a call whilst on site, ensure you are in a designated safe place before using the phone and remain there throughout the duration of the call.

Fire

- If you notice a fire anywhere on site, raise the alarm by pressing the nearest call point and exit the building by the nearest exit.
- If you hear the fire alarm at any time other than the weekly test time, make your way to the fire assembly point which is located next to the bicycle shed at the end of the car park.
- The fire alarm is tested WEEKLY every THURSDAY at 10:00am. No action is required to be taken during this time.



Accidents and first aid

- All accidents must be reported to a SUEZ member of staff.
- The first aid room is located on the 1st floor of the office building. First aiders are displayed on the notice boards. If you require first aid assistance, please speak to a SUEZ member of staff.
- First aid boxes and eye wash stations are located throughout the facility



Hot surfaces

- Do not touch pipes / metal work as they may be hot

THANK YOU





CONTACT

Siobhan O'Dell

Community Liaison Manager

Siobhan.perry@suez.com

Jim Clarke

Plant Manager

James.clarke@suez.com

suez.co.uk

