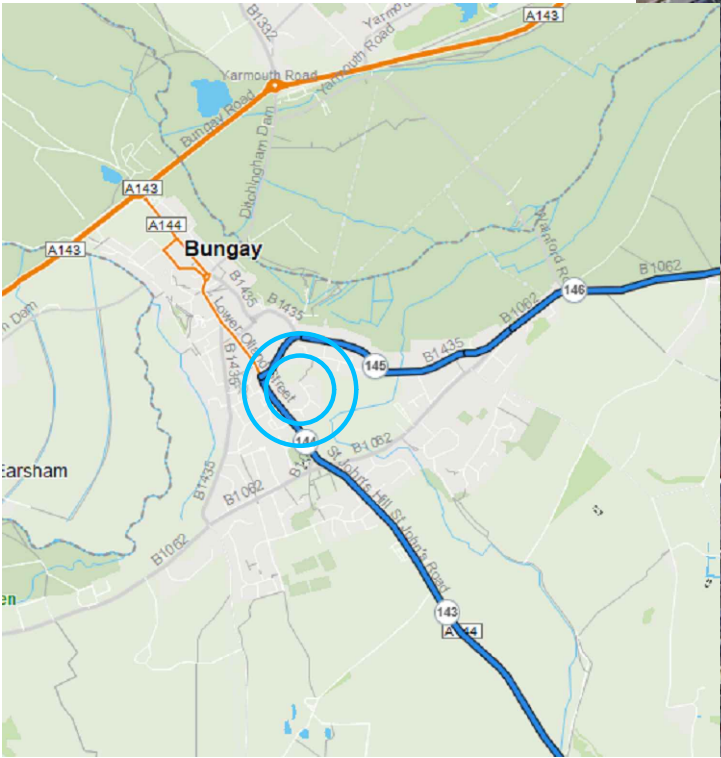
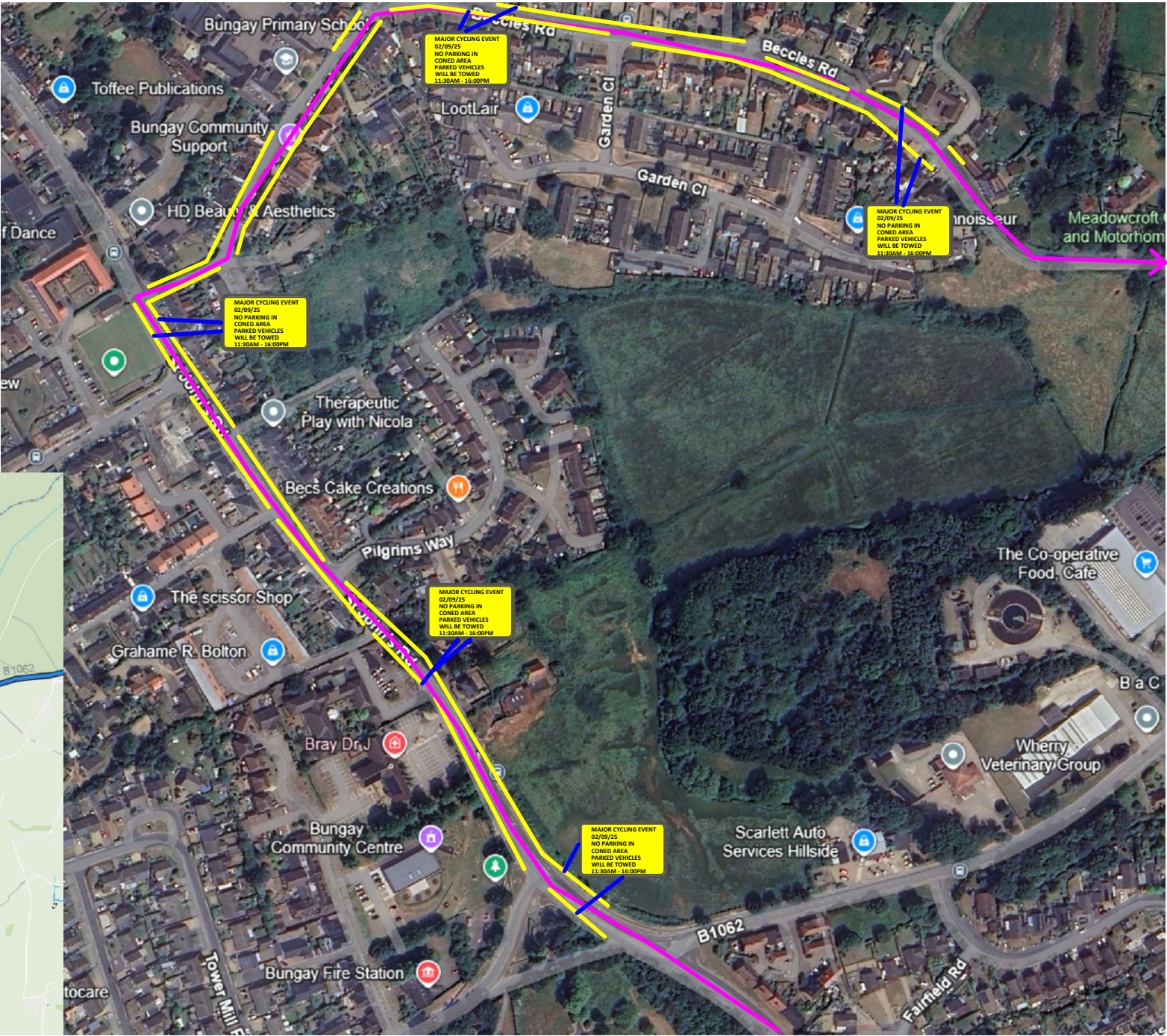






CYCLE ROUTE



	Blade Traffic Management	Client 	Designed by	E.J	Key	Notes  All works must conform to the Safety at Street Works and Road Works A code of Practice and abide by guidance given in the TSM Chapter 8 Parts 1 and 2 (2009) Part 3 (2020). All signs must conform with the TSRGD (2016).
	Blade House		Drawn by	A.W	 - Race Route	
	12 Trevor Foster Way,		Checked by	G.C	 - No Parking Cones	
	Bradford, BD5 8HB		Approved by	E.J		