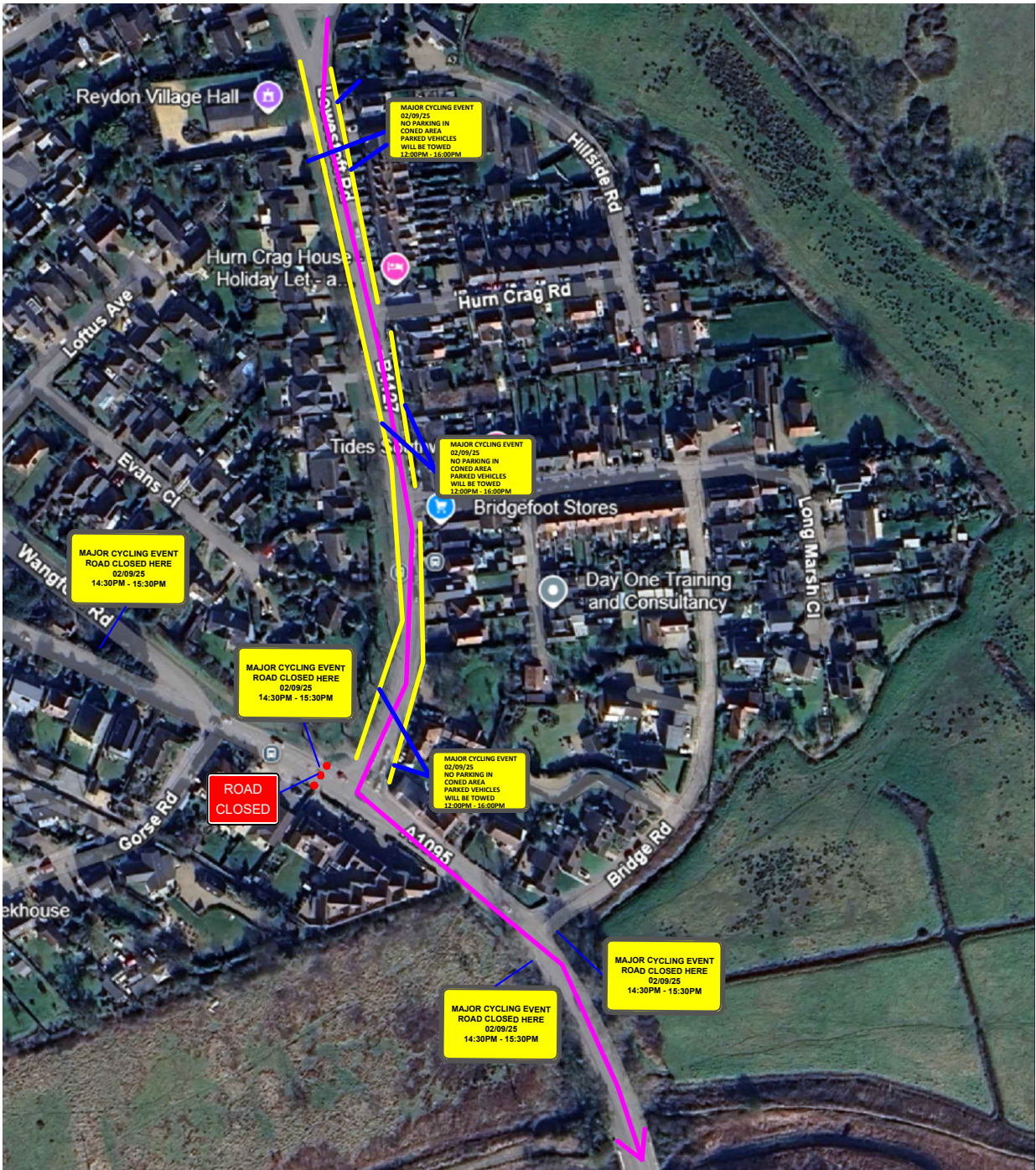
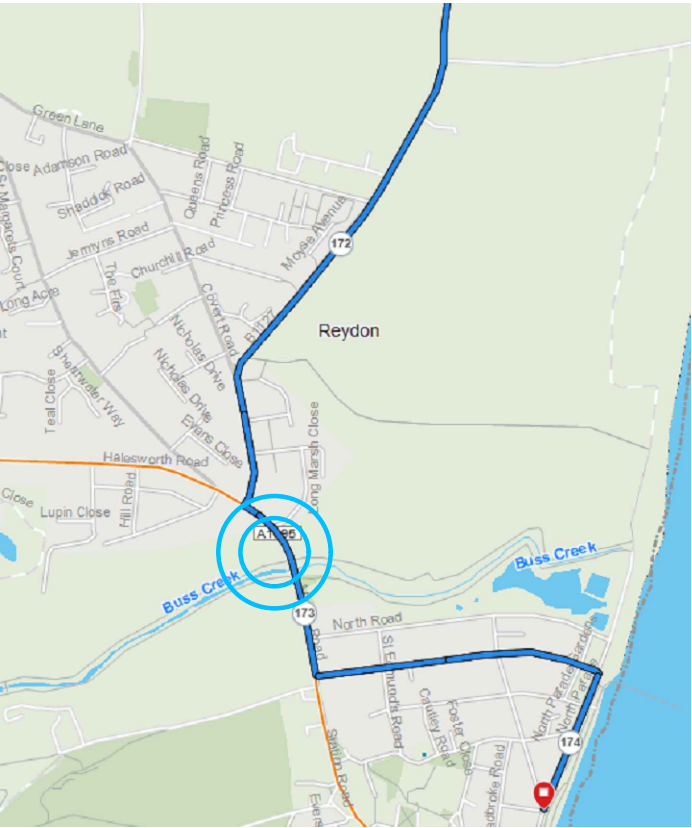


CYCLE ROUTE



Blade Traffic Management
Blade House
12 Trevor Foster Way,
Bradford, BD5 8HB

Client



Designed by

E.J

Drawn by

A.W

Checked by

G.C

Approved by

E.J

Key

- Race Route
- No Parking Cones

Notes

All works must conform to the Safety at Street Works and Road Works A code of Practice and abide by guidance given in the TSM Chapter 8 Parts 1 and 2 (2009) Part 3 (2020). All signs must conform with the TSRGD (2016).