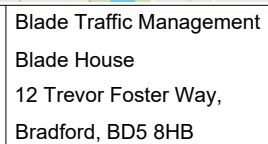
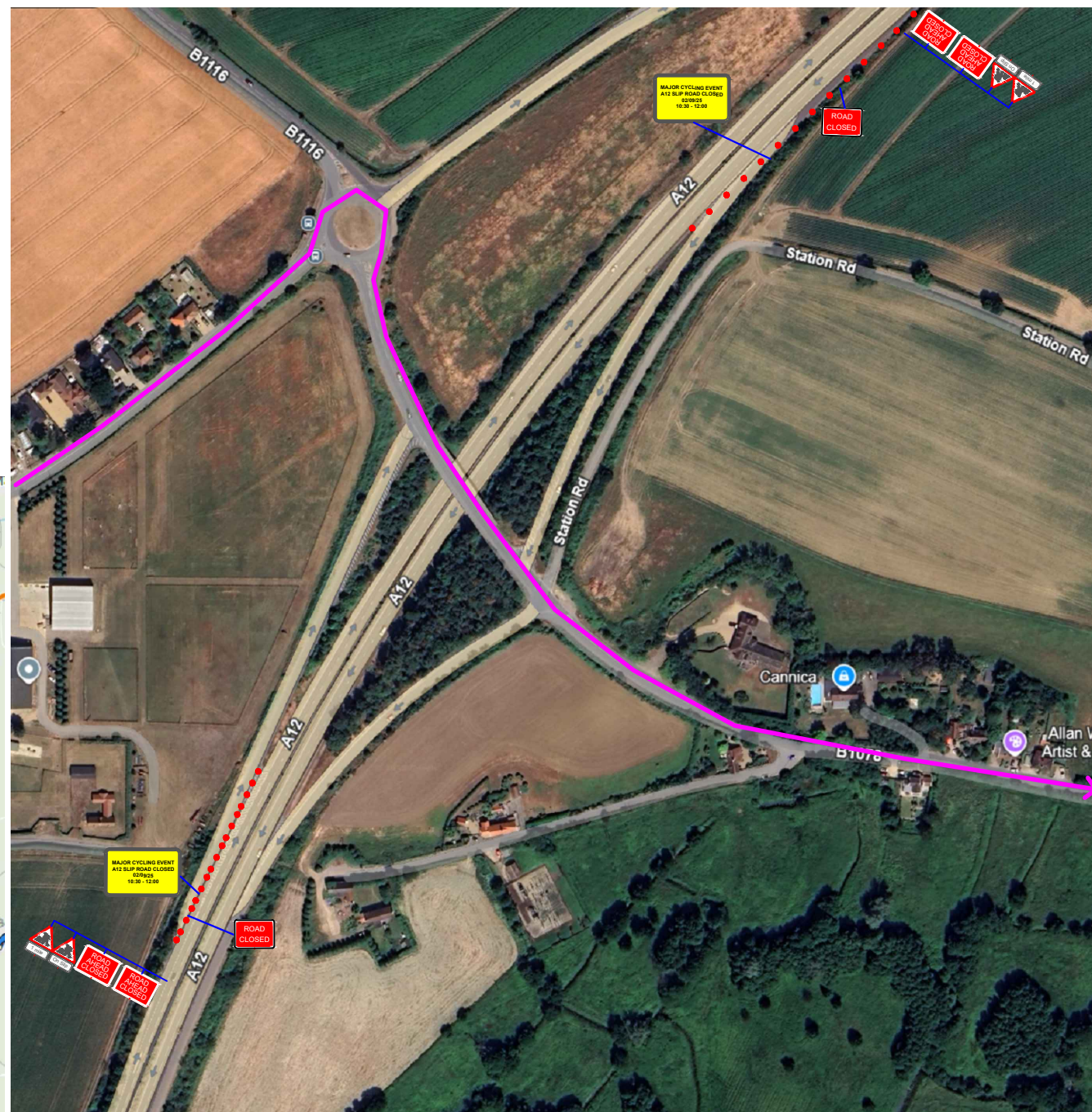


TOB STAGE 1 - 05

X0 LAMINATED SHEETS



E.J

 - No Parking Cones

All works must conform to the Safety at Street Works and Road Works A code of Practice and abide by guidance given in the TSM Chapter 8 Parts 1 and 2 (2009) Part 3 (2020).
All signs must conform with the TSRGD (2016).