

# EAST SUFFOLK SPECIALIST SERVICES

## SERVICE PROSPECTUS





# Table of Contents

I. Introduction	3	8. Ecology	30
2. Who are Specialist Services?	6	9. Landscape	36
3. Team	8	10. Arboriculture	42
4. How we work	10	II. Rights of Way Delivery	48
5. Service Purpose and Aims	12	12. RAMS/Wildlife Wise	52
6. Heritage	15	Contact us	58
7. Design	24		

# I. Introduction

Welcome to the East Suffolk Specialist Services prospectus, designed to highlight the current scope and future direction of our service. This document provides a valuable resource for both East Suffolk Council and external stakeholders interested in the important work we do.

As our service continues to grow to meet increasing demand, we have transitioned from a reactive approach to one that proactively shapes key projects across the district. Our team of Specialist Officers drives forward initiatives that protect and enhance the landscape, environment, and heritage of East Suffolk.

This overview outlines our structure, core values, and future priorities, setting a clear path forward. Our commitment to transparency and collaboration ensures that the Specialist Services team, Council members, and external partners are aligned with our aspirations.

By focusing on the built, natural, and historic environments, our dedicated team plays a vital role in ensuring the district's communities thrive. We continue to make a significant impact on heritage conservation, design quality, and biodiversity, all of which contribute to East Suffolk's vibrant future.



## Heritage



**50**

Conservation Areas  
(6.67 square miles)



**3600**

Listed buildings



**148**

Scheduled  
monuments



**2** Wrecks  
and Hulks



**14**

Nationally  
registered historic  
parks and gardens



**17**

Locally listed  
historic parks  
and gardens

## Arboriculture



Approx. **500**  
Tree Preservation  
Orders

## Public Path Orders



**1285**  
Miles of length  
of rights of way



## Ecology



**7** Special  
Protection  
Areas



**7** Special  
Area of  
Conservation



**1** Marine Special  
Protection Area



**1** Marine  
Special Area of  
Conservation



**69**  
Sites of Special  
Scientific Interest



**4** National  
Nature Reserves



**346**  
County  
Wildlife Sites

## Landscape



**144** Square  
miles of National  
Landscapes



**47**  
Square miles of  
Heritage Coast



**14** Nationally  
registered historic  
parks and gardens



**17**  
Locally listed  
historic parks and  
gardens

## 2. Who are Specialist Services?

East Suffolk Council's Specialist Services team is an in-house council consultee focused to the Built, Natural and Historic environment of the district. The team is comprised of the following disciplines.

The Service provides the Council with professionals who preserve and enhance the District's heritage and landscapes while promoting high-quality development.

In recent years, in-house resources in Local Authorities across England have decreased due to austerity measures.



Landscape



Arboriculture



Design



Heritage

East Suffolk Council has been proactive in recognising the value of these officers in preserving landscapes, environments, and communities.

Since 2019, the council has significantly expanded its team, making it one of the largest specialist in-house resources in the East of England.

Specialist Services, situated within the Planning Service, primarily focus on providing specialist consultee input for planning applications to ensure they meet standards for protection, enhancement, and creation of places and environments.



Ecology



Rights of Way Delivery



RAMS / Wildlife Wise

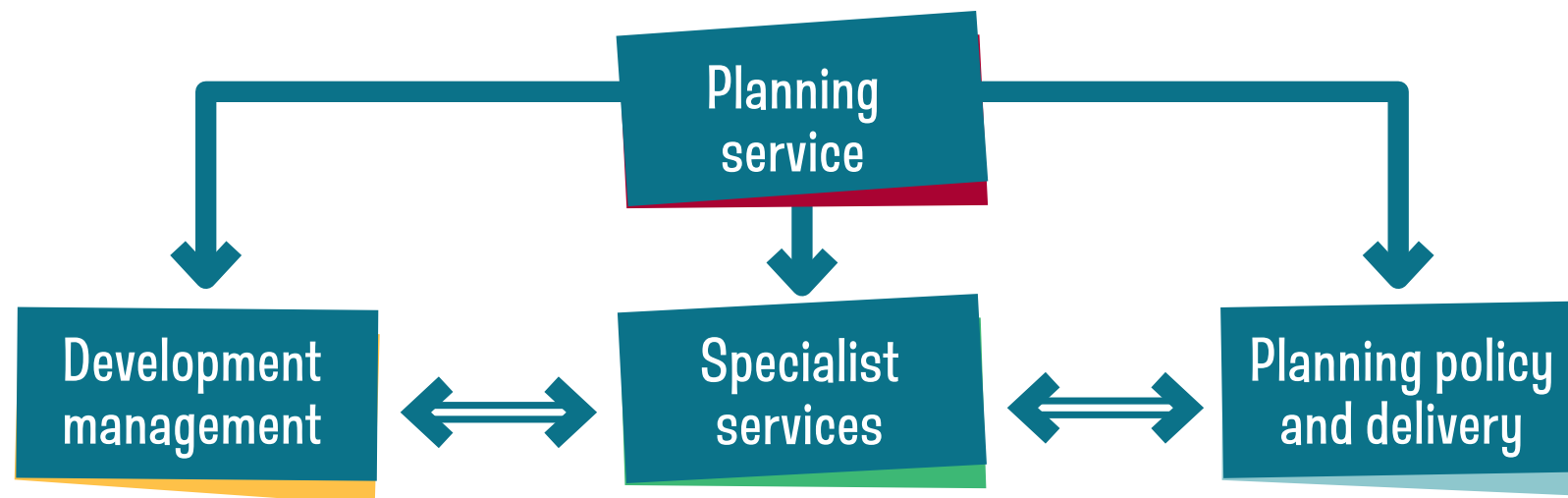


Additionally, Specialist Services play a crucial role in helping shape and steer wider planning documents such as Local Plan policy, Neighbourhood Plans, and Supplementary Planning Documents.

The officers within Specialist Services also have key responsibilities in guiding and delivering Nationally Significant Infrastructure Projects in East Suffolk.

Furthermore, they lead in fulfilling statutory requirements or their discipline areas, which include conducting reviews of existing appraisals like Conservation Areas or Landscape Character Assessments.

They are also involved in creating new protections such as Article 4 Directions, Tree Preservation Orders, or rights of way, as well as implementing wider initiatives and schemes like Quality of Place Awards, Guidance documents, and grant schemes.



# 3. Team

The Specialist Services team structure is focused around four core teams including, Design and Heritage, Landscape and Arboriculture (with Rights of Way Delivery), Ecology, and RAMS. Each team is led by a Principal Officer managing the day-to-day running of the team.

The Service is managed by the Specialist Services Manager with the service sitting along side Development Management and Planning Policy and Delivery.





HEAD OF PLANNING, BUILDING CONTROL AND  
COASTAL MANAGEMENT

DESIGN AND SPECIALIST SERVICES  
MANAGER

### Design and Heritage

PRINCIPAL DESIGN AND  
HERITAGE OFFICER

SENIOR DESIGN AND  
HERITAGE OFFICER

SENIOR DESIGN AND  
HERITAGE OFFICER

DESIGN AND  
HERITAGE OFFICER

ASSISTANT HERITAGE  
OFFICER

### Landscape and Arboriculture

PRINCIPAL LANDSCAPE AND  
ARBORICULTURAL OFFICER

SENIOR LANDSCAPE  
OFFICER

NATURAL ENVIRONMENT  
IMPLEMENTATION ADVISOR

ARBORICULTURAL  
OFFICER

ARBORICULTURAL  
OFFICER

RIGHTS OF WAY  
DELIVERY OFFICER

### Ecology

PRINCIPAL  
ECOLOGIST

ECOLOGIST

ECOLOGIST

ASSISTANT  
ECOLOGIST

### Wildlife Wise

RAMS DELIVERY  
MANAGER

STRATEGIC RAMS  
ADVISOR  
(TEMPORARY CONTRACT)

WILDLIFE AND  
VISITOR RANGER

WILDLIFE AND  
VISITOR RANGER

# 4. How we work

## Consultee Work

All the Specialist Services core work is centred around providing consultee input to both pre-applications and live planning applications. The consultee advice is provided through Development Management ensuring specialisms have influence and commentary around both the principles and details of planning applications. As stated at the beginning of the document, specialist input into planning applications can be uncommon and being able to provide this in-house service further promotes the quality of development within East Suffolk.





## Project Work

The service is proactive in how it promotes and influences the quality of development and heritage within East Suffolk. Each team has a duty to identify and recognise areas of work, whether this is a statutory requirement or a district project, to further support the context of East Suffolk. Past and present projects include:

- ↳ Tree Preservation Order Review.
- ↳ Landscape Character Assessment – review and update
- ↳ Article 4 Directions
- ↳ Conservation Area Appraisals – Creation and updating.
- ↳ Identification of Local Listed Parks and Gardens

## Advisory Role

Given the specialist nature of the professionals represented within the team, often officers are required to provide specialist input and advice to wider council services, these can include:

- ↳ Regeneration
- ↳ Assets
- ↳ Community Partnership
- ↳ Coastal Management
- ↳ Building Control
- ↳ Enforcement
- ↳ Environment and Climate Change team

Ensuring professional advice and recommendations are not just focused on the planning service and can ensure knowledge, and quality of place and environments are promoted across the District.

# 5. Service Purpose and Aims

Our aim is to promote and drive sustainable development while preserving and enhancing the built, natural, and historic environments of East Suffolk

The work and values as a service respond directly to the wider Councils values, aims, priorities, policies and plans.

These are set out in East Suffolks Strategic Plan 'Our Direction 2028,' Local Plan and Neighbourhood Plans which provides a clear and innovative approach to the built, natural, and historic environments the Specialist Services are responsible for.








# Our Direction 2028

Our aim is to promote  
a bright, green, open,  
free, and fair future  
for all East Suffolk



# Aims of Specialist Services Prospectus and Measuring Success

The aim of the Specialist Services prospectus is to provide a forward-thinking action plan, ensuring the team's values are applied in a structured and considered way. Previously reactive, the team is now positioned to adopt a proactive approach, planning around capacity, resources, and funding to address future challenges and maintain the high standard of work already achieved.

Success will be measured against both the team's core values and the expected project outcomes outlined in this document. The prospectus is designed to be a rolling plan, with updates scheduled by 2028 or earlier if required. Further details on each discipline will be provided in the following sections.



# 6. Heritage





# Introduction

Conservation is the protection and enhancement of heritage assets; managing change through decision making; supporting sustainable management of heritage assets and their setting; and aiding their protection from damage, neglect, and adverse changes.

The national context for the work of the Heritage team is provided by the Planning (Listed Buildings and Conservation Areas) Act 1990 which regulates the protection of listed buildings and designation of Conservation Areas. The conservation of the historic environment is guided at national level by the National Planning Policy Framework and supporting national planning guidance, and by the principles and practice guidelines provided by Historic England, the Government's agency for the historic environment.

Also at national level, the national amenity societies provide technical guidance on the practice of historic building conservation for structures of most periods. Enshrining the work of conservation practitioners are international charters such as the Burra Charter (1979) which codify principles applicable globally to the sustainable conservation of heritage assets.

At local level, the Waveney and Suffolk Coastal Local Plans provide a policy framework within which development management decisions are made, including those relating to listed buildings, Conservation Areas, Non-Designated Heritage Assets and nationally registered and locally listed historic parks and gardens. [The Historic Environment Supplementary Planning Document](#) amplifies the local plan policies through applied principles and practice for the guidance of owners, tenants and agents.





The heritage capital of East Suffolk consists of...



**50**

Conservation Areas  
(6.67 square miles)



**3600**

Listed buildings



**148**

Scheduled  
monuments



**2** Wrecks  
and Hulks



**14**

Nationally  
registered historic  
parks and gardens



**17**

Locally listed  
historic parks  
and gardens

The local character and distinctiveness of East Suffolk are derived from the diversity of architecture, landscape and coastal setting. These have given rise to an architectural typology not just of farmhouses, picturesque cottages and churches but of historic and contemporary resort tourism, military research and defence, agri-industry, park and garden structures, energy and landed estates. Buildings and structures that typify East Suffolk range from 16th century moot halls, a wide representation of 16th and 17th century farmhouses, the grandest Georgian country house in Suffolk, designed 18th and 19th century landscapes and 19th and 20th century military airfields, towers and pagodas.



## Aims

Conservation and enhancement of historic environment of East Suffolk to ensure preservation of the public value of heritage assets, their contribution to an understanding and interpretation of our past, and their contribution to local character and distinctiveness.







## Areas of work

The following areas of work have been identified based on the team's main purpose of supporting the planning service but also around enhancing the quality and protection of the historic environment in East Suffolk.

- ↳ Heritage advice on planning applications, appeals and enforcement.
- ↳ Advice to the public, agents, parish councils
- ↳ Conservation Area reviews, appraisals and designations
- ↳ Quality of Place Awards
- ↳ Nationally Significant Infrastructure Projects and Energy Projects
- ↳ Provision of heritage advice on planning policy and Supplementary Planning Documents
- ↳ Heritage support to Neighbourhood Planning
- ↳ Provision of heritage advice on corporate initiatives and projects
- ↳ Administer historic buildings grants.
- ↳ Undertake an Article 4 direction review.
- ↳ Maintain and review Buildings at Risk register.
- ↳ Promoting historic buildings and sites for listing
- ↳ Promoting the service, providing guidance and maintaining accessible records

## Promotion and support

The work of the Heritage team in addition to supporting the functions of the council in its specialist expert role is also outward facing, involving much contact with the public, be they owners and occupiers, agents, designers, community groups and civic societies, town and parish councils. The aim here is to maintain and raise the profile of the team and its work internally and externally through the following vehicles:



- **Quality of Place Awards** – these awards were initiated in 2010 to recognise and encourage an interest in the quality of the built and natural environment of our district and to promote an awareness of the need for high standards in all forms of design, including planning, architecture, sustainable development, landscaping and community engagement. Projects can be nominated in four categories: Design, Building Conservation, Nature/Ecology, Landscape, and Community. [Quality of Place awards » East Suffolk Council](#)
- **Guidance on Article 4 directions and buying a listed building** – periodic requests are received by the Heritage team from new owners, occupiers and agents about what owning a protected property means and it is intended to publish guidance to fill this gap.
- **Suffolk Conservation Officers Forum** – this forum meets on a quarterly basis and includes heritage/conservation officers from across Suffolk, Historic England Suffolk County Archaeology with the purpose of sharing professional best practice and discussing current issues in the field of historic environment conservation.
- **Heritage Open Days** – the team has previously contributed to the establishment of Heritage Open Days events in Felixstowe, Framlingham and Halesworth. It is proposed that more such events could be initiated with the support of local groups.



# 7. Design





# Introduction

The quality and delivery of places have a profound impact on the well-being of residents and visitors, influencing environmental sustainability, historic context, and the economic landscape of an area. Design is not simply about the appearance of buildings; it encompasses the creation and function of spaces that shape how people live, work, and interact with their surroundings. Well-designed places play a pivotal role in promoting mental well-being, fostering a sense of belonging and comfort within a space, and generating wider impacts, such as attracting economic opportunities to communities.

Design and placemaking are central to East Suffolk Council's objectives, as the value of well-designed environments for both communities and the environment is immeasurable. These considerations influence various sectors of the Council, from planning to regeneration. To ensure the promotion of high-quality design throughout the district, East Suffolk Council has a dedicated Design and Heritage team within Specialist Services, comprising four officers with expertise in Architecture, Urban Design, and Conservation. While their primary focus is on planning, their influence extends across the Council and into the wider communities within the district.

To further champion this agenda, East Suffolk Council has introduced what is believed to be the first and only Design Champion role within a Local Authority in England. The role is key in promoting high standards of design and placemaking by engaging with multiple services and teams both within the Council and externally, ensuring that these principles are embedded across all areas of work.

The district of East Suffolk boasts numerous high-quality developments, ranging from individual Exception Homes to large-scale communities. The Council's proactive approach to design, in alignment with the policies outlined in Local Plan, creates opportunities to drive innovation in design and placemaking. This, in turn, enables the delivery of award-winning developments that contribute to the district's unique character.

As a diverse rural and urban district, East Suffolk is characterised by a range of settlement sizes, interspersed with world-renowned landscapes and celebrated heritage assets. This distinctive context provides a unique platform for designers and architects to push the boundaries of innovation, while delivering high-quality development in line with the policies of the Local Plan. This emphasises the importance of sustainable development, heritage conservation, and the enhancement of the district's varied environments.

The following sections outline a clear approach to promoting and advancing the agenda of high-quality design and placemaking in East Suffolk, ensuring that future developments continue to reflect the values set out in the Local Plan and contribute positively to the district's well-being, heritage, and economic vitality.



## Aims

To promote and commit to high quality design across East Suffolk, ensuring sustainable communities and places are delivered for all residents and visitors to the district.







## Areas of work

The following priorities of work have been identified based on the team's main purpose of supporting the planning service but also around enhancing the quality of design and placemaking in East Suffolk.

- ↳ Design advice on planning applications, appeals and enforcement.
- ↳ Advice to the public, agents, parish councils
- ↳ Quality of Place Awards
- ↳ Delivery of a District Design Code
- ↳ Mentoring and support of East Suffolk Design Advocates
- ↳ Nationally Significant Infrastructure Projects and Energy Projects
- ↳ Provision of design advice on planning policy and Supplementary
- ↳ Design support to Neighbourhood Planning
- ↳ Provision of Design advice on corporate initiatives and projects
- ↳ Coordinate design training opportunities for the wider council.
- ↳ Undertake evidence-based work to support wider initiatives.

## Promotion and support

The work of the Design team in addition to supporting the functions of the council in its specialist expert role is also outward facing, involving much contact with the public, be they owners and occupiers, agents, designers, community groups and societies, town and parish councils. The aim here is to maintain and raise the profile of the team and its work internally and externally through the following vehicles:

- **Quality of Place Awards** - through the support of the Heritage Officers within Specialist Services, the awards provide great opportunities to promote the work within the team but also the quality in design and delivery of projects across the district. [Quality of Place awards » East Suffolk Council](#)
- **Suffolk Design** - [Suffolk Design](#) provides a shared resource for all local authorities and County Council to promote quality in design and placemaking across Suffolk. The Council partnership initiative provides training and resources to Council Officers ensuring opportunities in knowledge and learning are maintained. The initiative also creates opportunities to work with the private sector and other bodies to promote design within Suffolk.







# 8. Ecology





# Introduction



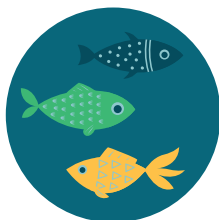
**7** Special  
Protection  
Areas



**7** Special  
Area of  
Conservation



**1** Marine  
Special Area of  
Conservation



**1** Marine Special  
Protection Area



**69**  
Sites of Special  
Scientific Interest



**346**  
County  
Wildlife Sites



**4** National  
Nature Reserves

East Suffolk supports a diverse range of habitats and species. This includes sites of international and national nature conservation importance, and rare and protected species. A number of sites, such as RSPB Minsmere, are of international importance. Designations for such internationally important sites include Special Protection Area (SPA), Special Area of Conservation (SAC) and Ramsar sites. There are seven SPAs: seven SACs and five Ramsar Sites wholly or partly within the district, along with one marine SPA and one marine SAC off the coast. The district also contains four National Nature Reserves (NNRs) and 69 Sites of Special Scientific Interest (SSSIs) which are of national importance and 345 County Wildlife Sites (CWSs) which are of at least county nature conservation importance.

Many species and habitats which are legally protected or of significant conservation importance are also found outside of designated nature conservation sites. These include at least 12 species of bat, populations of water vole and great crested newt which at a county scale are of at least regional importance, four species of reptile, areas of lowland heathland and coastal shingle vegetation.

The protection of the natural environment is an important and integral part of the planning system. As Local Planning Authority, the council has a statutory duty to consider the conservation of biodiversity when making decisions on planning applications.

Policy SCLP10.1 of the Suffolk Coastal area Local Plan and policy WLP8.34 of Waveney area Local Plan, require that there should be no net loss of biodiversity as a result of a development and that where possible ecological enhancements are provided. From February 2024 mandatory Biodiversity Net Gain (BNG), under the Environment Act (2021), requires that eligible new developments deliver a minimum of a 10% biodiversity gain.

The following sections provide a focus on the teams aims and aspirations over the next four years ensuring the protection and enhancement of the natural environment within East Suffolk.



## Aims

Conservation and enhancement of the natural environment of East Suffolk to ensure that the biodiversity value of the district is increased, through the implementation of well-located and designed developments and facilitation of Biodiversity Gain sites that support the aims of the national Nature Recovery Network and the Local Nature Recovery Strategy.







## Areas of work

The following priorities of work have been identified based on the team's main purpose of supporting the planning service but also around promoting the conservation and enhancement of the natural environment in East Suffolk.

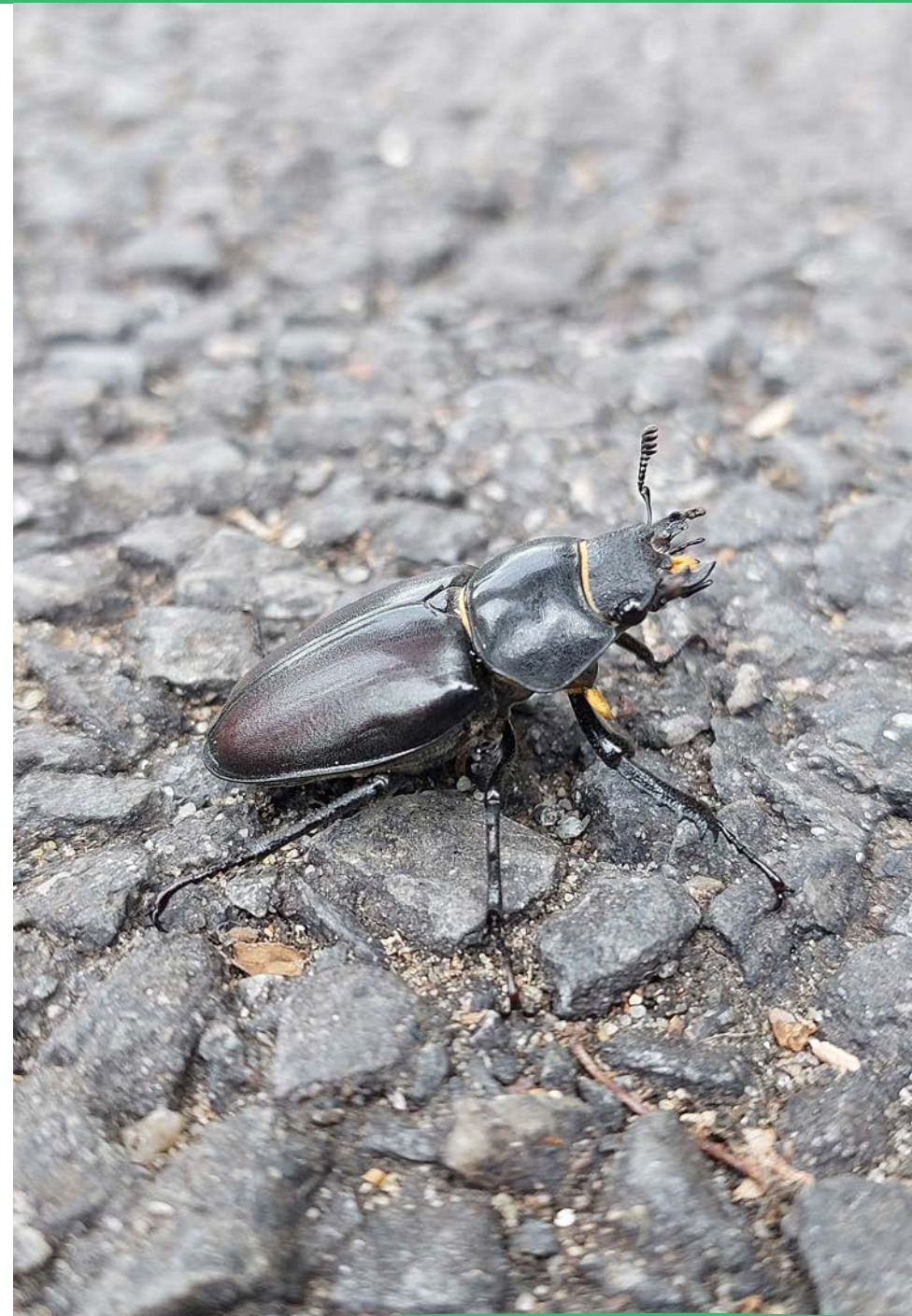
- ↳ Ecological advice on planning applications, appeals and enforcement.
- ↳ Advice on, and implementation of, Biodiversity Net Gain (BNG) requirements.
- ↳ Ecological advice on Nationally Significant Infrastructure Projects (NSIPs).
- ↳ Advice to the public, agents, parish councils on planning and biodiversity matters.
- ↳ Provision of ecological advice on planning policy and Supplementary Planning Documents.
- ↳ Ecological support to Neighbourhood Planning.
- ↳ Provision of ecological advice on corporate initiatives and projects.
- ↳ Support delivery of offsite BNG via register of Biodiversity Unit providers.
- ↳ Support monitoring and reporting of the Council's statutory Biodiversity Duties under the Natural Environment and Rural Communities (NERC) Act (2006) (as amended).
- ↳ Representing East Suffolk Council on county, regional and national planning and biodiversity matters. Including, but not limited to, membership of the following groups:
- ↳ Suffolk Biodiversity Information Service (SBIS) Board.
- ↳ Natural England Norfolk and Suffolk Great Crested Newt District Level Licensing (GCN DLL) Steering Group.
- ↳ East Anglian Biodiversity and Planning Group.
- ↳ Support review of non-statutory designated nature conservation sites (County Wildlife Sites and Roadside Nature Reserves) in East Suffolk as part of countywide project.
- ↳ Supporting identification and promotion of sites for consideration for designation as County Wildlife Sites.
- ↳ Promoting the service, including providing wider guidance and advice on biodiversity matters.



## Promotion and support

The work of the Ecology team in addition to supporting the functions of the council in its specialist expert role is also outward facing, involving contact with the public, be they site owners, agents, developers, ecological consultants, community groups, town and parish councils, or nature conservation NGOs and other organisations. The aim here is to maintain and raise the profile of the team and its work internally and externally through the following vehicles:

- **Quality of Place Awards** – support the Biodiversity and Nature categories at these awards. Recognising and encouraging an interest in the quality of the natural environment of our district and to promote an awareness of the need for high standards in all forms of design, including planning, architecture, sustainable development, landscaping and community engagement. [Quality of Place awards » East Suffolk Council](#)
- **Biodiversity Net Gain Exemplar Sites** – explore the opportunity to collaborate with landowners who are delivering exemplar Biodiversity Gain sites to showcase how this can be achieved at other sites.





# 9. Landscape



# Introduction

Landscape is a vital part of our natural and human created environment and is considered by many to be one of the most important components of a healthy and enjoyable life. During the latter part of the twentieth and early part of twenty-first centuries the vulnerability of landscapes has been exposed in the face of economic growth, social change and climate change.

In planning for future prosperity, more effort needs to be put into safeguarding the quality of the environment, not only for our own health and well-being, but also for the sake of future generations. The growing emphasis on 'sustainable development' - the balance between social concerns, economic development and the environment - implies a strong need to integrate issues of landscape conservation and enhancement into the development process.

The national context for the work of the Landscape team is provided by the provisions of the National Planning Policy Framework with regards to the natural environment. Additional provision is made for nationally designated landscapes which specifically refers to the Suffolk and Essex

Coast and Heaths National Landscape (formerly Area of Outstanding Natural Beauty (AONB)), and the District's Heritage Coast.

At local level, the Waveney and Suffolk Coastal Local Plans along with 'made Neighbourhood Plans provide a policy framework within which development management decisions are made, including those relating to the conservation and enhancement of landscape character and the natural environment.

The landscape capital of East Suffolk consists of 1 National Landscape; 1 Heritage Coast; 14 nationally registered historic parks and gardens; and 17 locally listed historic parks and gardens.

The local character and distinctiveness of East Suffolk are derived from the diversity of architecture, landscape and coastal setting. East Suffolk has a rich and varied landscape, from farmed claylands, to coastal heaths and estuarine marshlands.



**144** Square  
miles of National  
Landscapes



**47**  
Square miles of  
Heritage Coast



**14** Nationally  
registered historic  
parks and gardens



**17**  
Locally listed  
historic parks and  
gardens





## Aims

The conservation and enhancement of landscape character and amenity in East Suffolk to ensure District wide landscape distinctiveness through the planning process.



## Areas of work

The following work priorities have been identified based on the team's main purpose of supporting the planning service but also around enhancing the quality and protection of the landscape of East Suffolk.

- ↳ Landscape advice on planning applications, appeals and enforcement.
- ↳ Advice to the public, agents, parish councils
- ↳ Landscape advice on Nationally Significant Infrastructure Projects and Energy Projects
- ↳ Provision of landscape advice on planning policy and Supplementary Planning Documents
- ↳ Landscape response to Neighbourhood Planning consultations
- ↳ Provision of landscape advice on corporate initiatives and projects
- ↳ Maintain and review as necessary the District's Landscape Character Assessments and other landscape related Local Plan Policy supporting documents.
- ↳ Promoting the service, providing guidance and maintaining accessible records.



## Promotion and support

The work of the Landscape team in addition to supporting the functions of the Council in its specialist expert role is also outward facing, involving much contact with the public, be they owners and occupiers, agents, designers, community groups and civic societies, town and parish councils. The aim here is to maintain and raise the profile of the team and its work internally and externally through the following vehicles:

- **Quality of Place Awards** – these awards were initiated in 2010 to recognise and encourage an interest in the quality of the built and natural environment of our district and to promote an awareness of the need for high standards in all forms of design, including planning, architecture, sustainable development, landscaping and community engagement. Projects can be nominated in four categories: Design, Building Conservation, Nature and Landscape, and Community. [Quality of Place awards » East Suffolk Council](#)
- **Suffolk Landscape and Arboriculture Officers Forum** – this forum meets on a bi-monthly basis and includes landscape and arboriculture officers from across Suffolk, with the purpose of sharing professional best practice and discussing current issues in the fields of landscape and arboriculture.







# 10. Arboriculture





# Introduction

Arboriculture is the art of cultivating and properly managing trees. As far as the District Council's arboricultural role within the Planning Department is concerned, we are responsible for the protection and enhancement of the District's tree stock through the use of relevant legislation and the adoption of best arboricultural practice through the planning process.

Like the role of Landscape, so to with Arboriculture in planning for future prosperity, more effort needs to be put into safeguarding the quality of the environment, not only for our own health and well-being, but also for the sake of future generations. The growing emphasis on 'sustainable development' - the balance between social concerns, economic development and the environment - implies a strong need to integrate positive arboriculture management into the development process.

The national context for the work of the Arboriculture team is provided by the provisions of the National Planning Policy Framework with regards to the natural environment, as well as the provisions for tree protection contained in the Town and Country Planning Act in the form of Tree Preservation Orders and Conservation Areas. In respect of development proposals, there is a duty enshrined in the Town and Country Planning Act that planning authorities should make trees a material consideration of the planning process.

At the more local level, the Waveney and Suffolk Coastal Local Plans along with 'made' Neighbourhood Plans provide a policy framework within which development management decisions are made, including those relating to the conservation and enhancement of landscape character and the natural environment. Where trees form a fundamental component of the prevailing local landscape character, careful consideration is given to the retention of trees through specialist construction methods and, if necessary, legal protection.

The arboricultural capital of East Suffolk includes approximately 500 Tree Preservation Orders which includes the protection of individual trees, groups of trees, areas of tree cover and woodlands. Trees are also afforded protection under the Conservation Area legislation.

The local character and distinctiveness of East Suffolk are derived from the diversity of architecture, landscape and coastal setting. East Suffolk has a rich and varied landscape, from farmed claylands, to coastal heaths and estuarine marshlands. Full consideration is given to the role of trees in reinforcing and enhancing local landscape character.

The following sections provide a focus on the team's aims and aspirations over the next four years ensuring that the protection and enhancement of the landscapes of East Suffolk through best arboricultural practice is continued.



## **Aims**

The conservation and enhancement of landscape character and amenity in respect of East Suffolk's tree stock to ensure District wide landscape distinctiveness through positive arboricultural management and consultation advice and recommendations through the planning process.





## Areas of work

The following work priorities have been identified based on the team's main purpose of supporting the planning service but also around enhancing the quality and protection of the trees and woodland in East Suffolk.

- Arboricultural advice on planning applications, appeals and enforcement.
- Management of the District's Tree Preservation Orders including processing and determining applications for tree works and serving new TPOs where required.
- Arboricultural advice to the public, agents, and Parish Councils.
- Arboricultural advice on Nationally Significant Infrastructure Projects and Energy Projects
- Provision of arboricultural advice on planning policy and Supplementary Planning Documents
- Arboricultural related response to Neighbourhood Planning consultations
- Provision of arboricultural advice on corporate initiatives and projects
- Maintain and review as necessary the District's TPOs.
- Promoting the service, providing guidance and maintaining accessible records.





## Promotion and support

The work of the Arboriculture team in addition to supporting the functions of the Council in its specialist expert role is also outward facing, involving much contact with the public, be they owners and occupiers, agents, designers, community groups and civic societies, town and parish councils. The aim here is to maintain and raise the profile of the team and its work internally and externally through the following vehicles:

- **Suffolk Landscape and Arboriculture Officers Forum** - this forum meets on a bi-monthly basis and includes landscape and arboriculture officers from across Suffolk, with the purpose of sharing professional best practice and discussing current issues in the fields of landscape and arboriculture.









# II. Rights of Way Delivery

## Introduction

We are responsible for the creation, diversion or extinguishment of public footpaths, bridleways or restricted byways within our district.

Members of the public who wish to create, divert or extinguish a public right of way, can contact the team to initiate the legislative process through which such matters are handled. This is a reactive role in response to enquiries from members of the public and landowners, or through demand initiated through the development management planning process.







## Aims

The public path order service provided by Specialist Services team aims to provide a professional and thorough service and specifically to:

- ↳ To lead on the delivery of the Council's Rights of Way function under the Highways Act 1980, the Town and Country Planning Act 1990 and the Countryside and Rights of Way Act 2000 (and such other subsequent or amended legislation as is applicable) for the creation, diversion and extinguishment of public rights of way.
- ↳ To lead on providing advice and assistance on issues relating to public rights of way on Council land and on development proposals on private land.
- ↳ To maintain a centre of expertise and information on rights of way matters within the Council as a whole.
- ↳ Support the delivery of East Suffolk Council's Cycling and Walking Strategy.







## Areas of work

The following work priorities have been identified based on the team's main purpose of delivering the Districts responsibilities concerning Public Rights of Way.

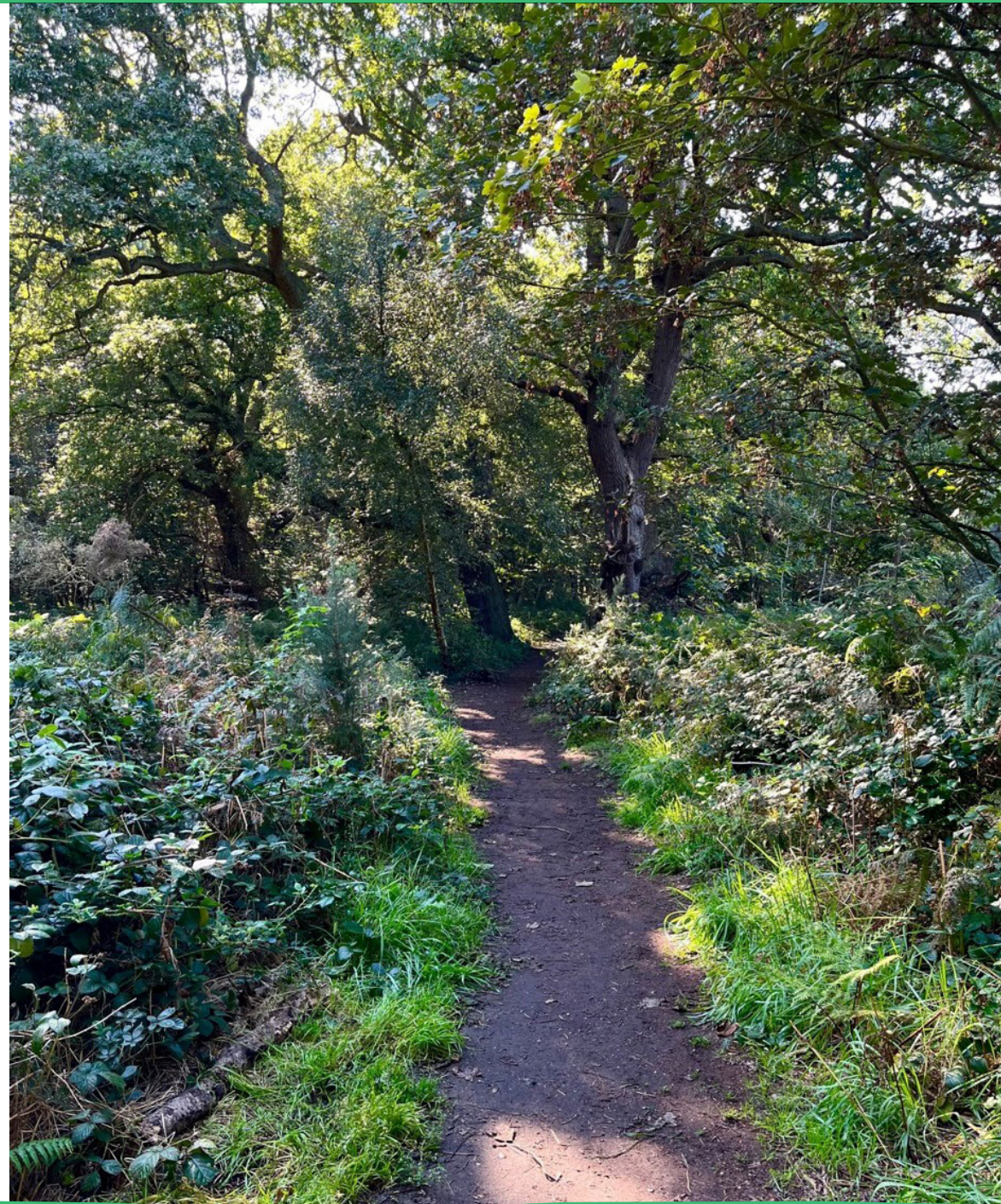
- ↳ Processing and handling through to completion of requirements for the creation, diversion or extinguishment of public footpaths, bridleways or restricted byways within our district.
- ↳ To ensure that all costs involved in the processing of such enquiries are fully recovered in accordance with the Council's fee charging schedule.
- ↳ Provision of advice on public rights of way related matters to planning colleagues in relation to development management.
- ↳ Where necessary, initiate negotiations with relevant parties and with planning applicants on development proposals.
- ↳ To identify, prepare, deliver and review Rights of Way training material to officers and members of the Planning Committees.
- ↳ To engage with the County Council, including dealing with County Council consultations on rights of way matters and where appropriate work in partnership with the County, neighbouring Districts and Town and Parish Councils in delivering improvements to the rights of way network and other related initiatives.
- ↳ Maintain and review the Council's relevant website pages to ensure the public has the advice and guidance they need to engage with the service.
- ↳ To respond to enquiries from the public concerning rights of way matters, including referral to and liaison with the County Council.
- ↳ To contribute to the preparation and implementation of relevant Council strategies and policies that seek to enhance access, health and well-being.
- ↳ Supporting the delivery of East Suffolk Council's Cycling and Walking Strategy by providing guidance on integrating cycling and walking infrastructure. This includes reviewing planning applications, collaborating with various departments and supporting the monitoring and reporting of the strategy's progress.





## Promotion and support

The work of the Public Path Order team in addition to supporting the functions of the Council in its specialist expert role, will also ensure that the relevant pages of the Council's web site are kept up to date and are fully informative to those who wish to make enquires and seek further information and guidance.





# 12. RAMS/Wildlife Wise

## Introduction

The Suffolk Coast Recreational Disturbance Avoidance and Mitigation Strategy ('RAMS'), also known by its public facing brand Wildlife Wise, is a partnership made up of East Suffolk Council, Ipswich Borough Council, Babergh District Council and Mid Suffolk District Council. The project and its strategy are the result of close collaborative working between the partnership authorities, Natural England as the statutory nature conservation body and a wide range of other stakeholders.

RAMS is an innovative solution by which European wildlife sites are protected from harm that could otherwise potentially occur because of increased recreation pressure arising from the new housing growth allocated in their Local Plans. The project also ensures that sustainable housing growth can be delivered across these authorities, facilitating development at the same time.

The Technical Report (can be found on the East Suffolk Council website) provides clear mechanisms by which pressure from increased recreation can be avoided and mitigated. The Technical Report includes a range of measures that are tested against available evidence, reflect best practice elsewhere, are the most optimal approaches for individual site needs and are informed by stakeholder input.

The Strategy proposes the following measures, to be primarily funded via developer contributions as part of planning permissions given for residential development; a delivery officer, wardens, and audit of access points, new signs and interpretation, codes of conduct packs, an audit of car parking, several dog related measures and a range of targeted projects for the longer term. It is also recognised that in addition to these measures that are focussed on the sites, large scale developments

should also seek to incorporate good practice principles in the delivery of green infrastructure that provides viable alternatives to the recreation experience at the sites. The Healthy Environments Supplementary Planning Document adopted by East Suffolk Council provides detailed design criteria to provide developers with the tools they need to deliver this green infrastructure.





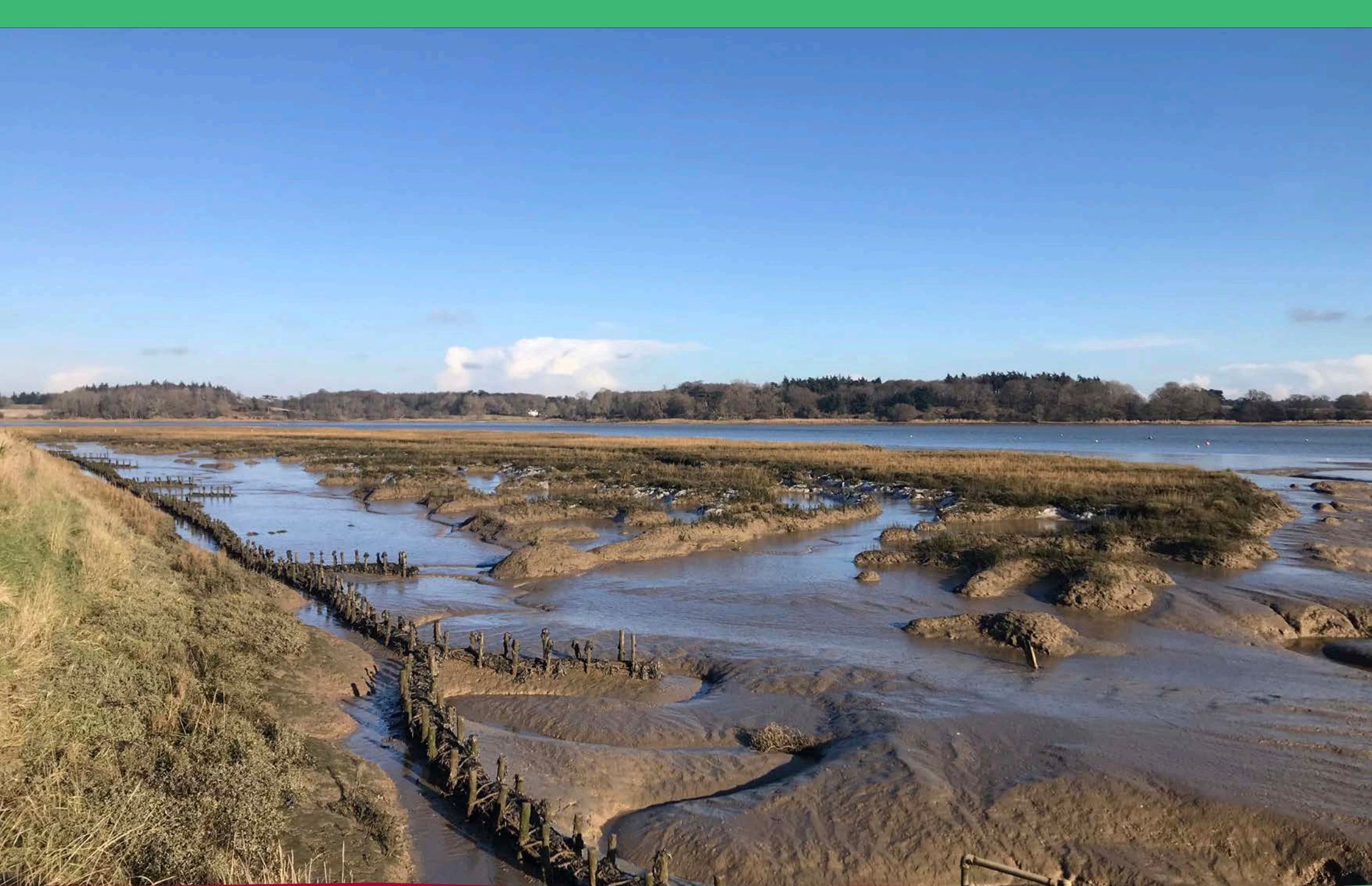
## Aims

To protect European wildlife sites from harm that could otherwise potentially occur because of increased recreational pressure arising from new housing growth, allocated in the Local Plan.

To ensure East Suffolk Council is compliant with their obligations under the Conservation of Habitats and Species Regulations 2017 (as amended).









## Areas of work

The following work priorities have been identified based on the team's main purpose of supporting the planning service but also around enhancing the quality and protection of the trees and woodland in East Suffolk.

- ↳ Delivery of the Suffolk Coast Recreational Disturbance Avoidance and Mitigation Strategy.
- ↳ Close partnership working with all four RAMS authorities to ensure that their priorities are met, and the project is successful.
- ↳ Providing advice to the Ecology teams and planning services of the partnership authorities on the most effective measures to avoid and mitigate recreational disturbance.

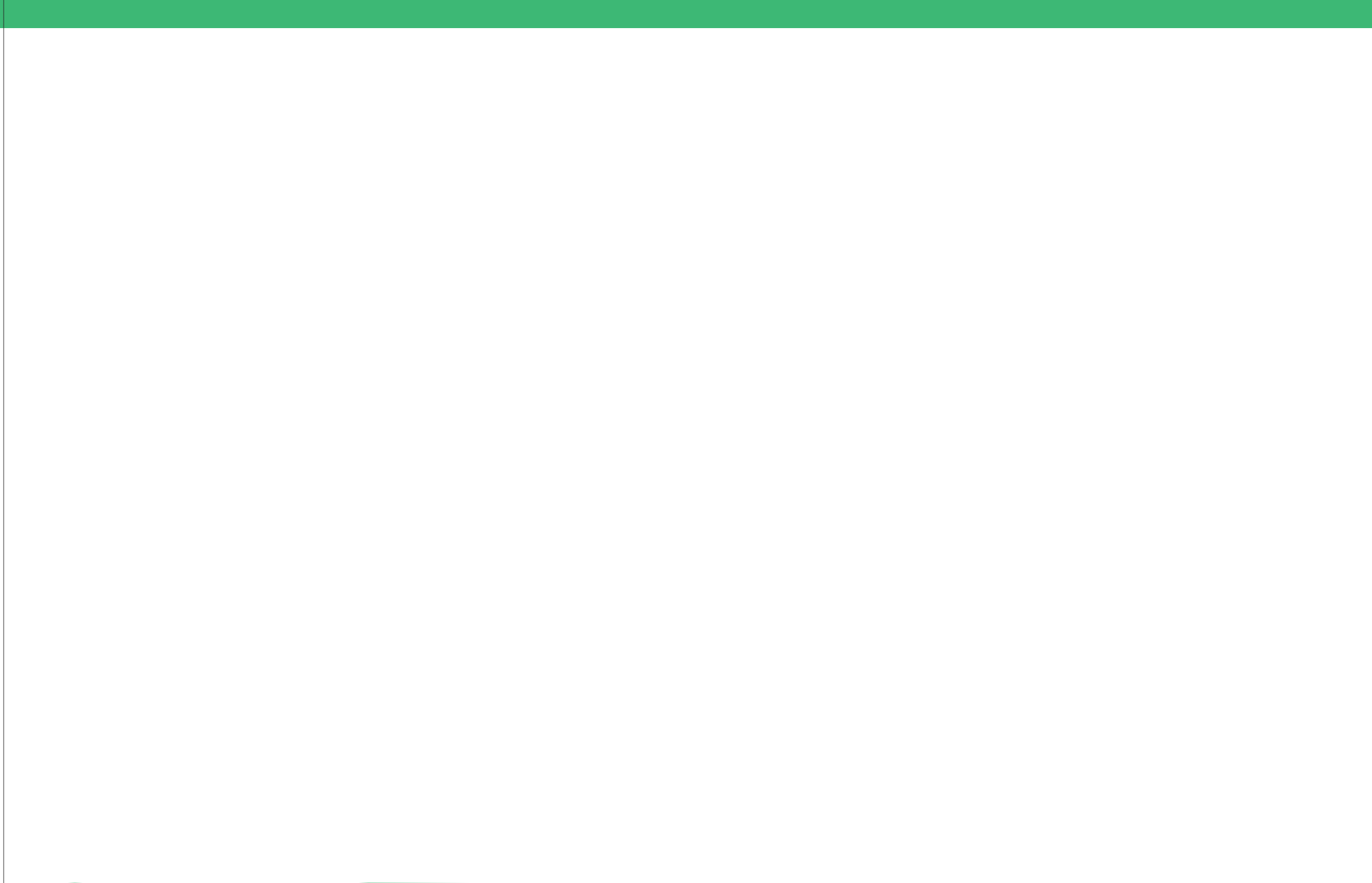




## Promotion and support

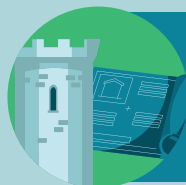
The work of the Wildlife Wise team role is primarily outward facing, involving contact with the public, be they local people, visitors, developers, ecological consultants, community groups, town, parish and district councils, or nature conservation charities and other organisations. The aim here is to maintain and raise the profile of the project and its work internally and externally through the following vehicles:

- **Press releases** – supporting the projects educational aims by gaining press interest.
- **Newsletters** – keeping stakeholders informed with regular newsletters highlighting project successes and key messages.
- **The Working Group** – engaging with key stakeholders to promote the project, identify key issues and areas for further work, and encourage consistency in key messages across the project area.
- **Wildlife site interpretation and communications** – installing new and updated wildlife site interpretation and focused communications to raise awareness of the project and its key messages.





# Contact us



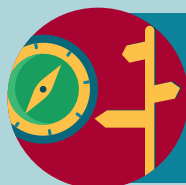
Design and Heritage  
[heritage@eastsoffolk.gov.uk](mailto:heritage@eastsoffolk.gov.uk)



Ecology  
[ecology@eastsoffolk.gov.uk](mailto:ecology@eastsoffolk.gov.uk)



Landscape and Arboriculture  
[treesandlandscape@eastsoffolk.gov.uk](mailto:treesandlandscape@eastsoffolk.gov.uk)



Public Path Orders  
[publicpathorders@eastsoffolk.gov.uk](mailto:publicpathorders@eastsoffolk.gov.uk)



RAMS/Wildlife Wise  
[rams@eastsoffolk.gov.uk](mailto:rams@eastsoffolk.gov.uk)



Service Manager  
[chris.king@eastsoffolk.gov.uk](mailto:chris.king@eastsoffolk.gov.uk)