

# Sizewell C Community Forum

Thursday 23<sup>rd</sup> October 2025

Sizewell Sports and Social Club – King George Avenue, Leiston

1. Welcome and Introduction of the Chair and Panel – *(Chair)*
2. Corporate and Community Relations – *(Marjorie Barnes)*
3. Project Look Ahead for 2026 & Key Milestones – *(Damian Leydon)*
4. Occupational Health and Workforce Wellbeing - *(Ceri Bryant)*
5. Pastoral Support -*(Clive Mobbs)*
6. Q&A – via Town and Parish Council Representative – *(Chair)*
7. Dates of Future Meetings – *(Chair)*

# Item 1 : Welcome, Introductions and Matters Arising

Chair

**Damian Leydon** - Site Delivery Director

**Richard Bull** - Head of Planning

**Marjorie Barnes** - Head of Regional External Affairs & Development

**Ceri Bryant** – Occupational Health and Wellbeing Manager

**Clive Mobbs** – Lead Chaplin

## Member of Parliament

Jenny Riddell-Carpenter, MP for Suffolk Coastal

## Council Representatives

Cllr Richard Smith, Suffolk County Council

Cllr TJ Haworth-Culf, Suffolk County Council

Cllr Katie Graham, East Suffolk Council

Cllr Sarah Whitelock, East Suffolk Council

## External Stakeholders

Simon Barlow – Project Manager, Environment Agency

Sally Longmate – CEO, Suffolk Association of Local Councils

Hannah Bloom – Chief Executive, Suffolk Community Foundation

Simon Amstutz - Suffolk & Essex Coast & Heaths National Landscape

# Item 2 : Corporate and Community Relations

Marjorie Barnes, Head of Regional External Affairs and Development

# Final Investment Decision

**June 10, 2025: UK Government  
commits £14bn – project green  
light**

**July 22, 2025: Final Investment  
Decision confirmed; private  
investment secured**

**July 2025: Civil Works Alliance  
formed for earthworks &  
tunneling**

**Ongoing: Offsite Infrastructure;  
Community forums active**





## COMMUNITY RELATIONS TEAM

The Sizewell C Community Relations Team is based in Leiston and dedicated to keeping local people informed, listened to, and supported throughout the project's construction. The team works closely with residents, parish councils, local businesses, and community organisations to share accurate information, respond promptly to questions or concerns, and minimise disruption wherever possible.

## GET IN TOUCH

Call us, email us, message us, write to us, or simply call in and speak to us, we'd love to hear from you:

📍 Sizewell C Information Office, 48-50 High Street,  
Leiston IP16 4EW

☎️ FREEPHONE 0800 197 6102\*

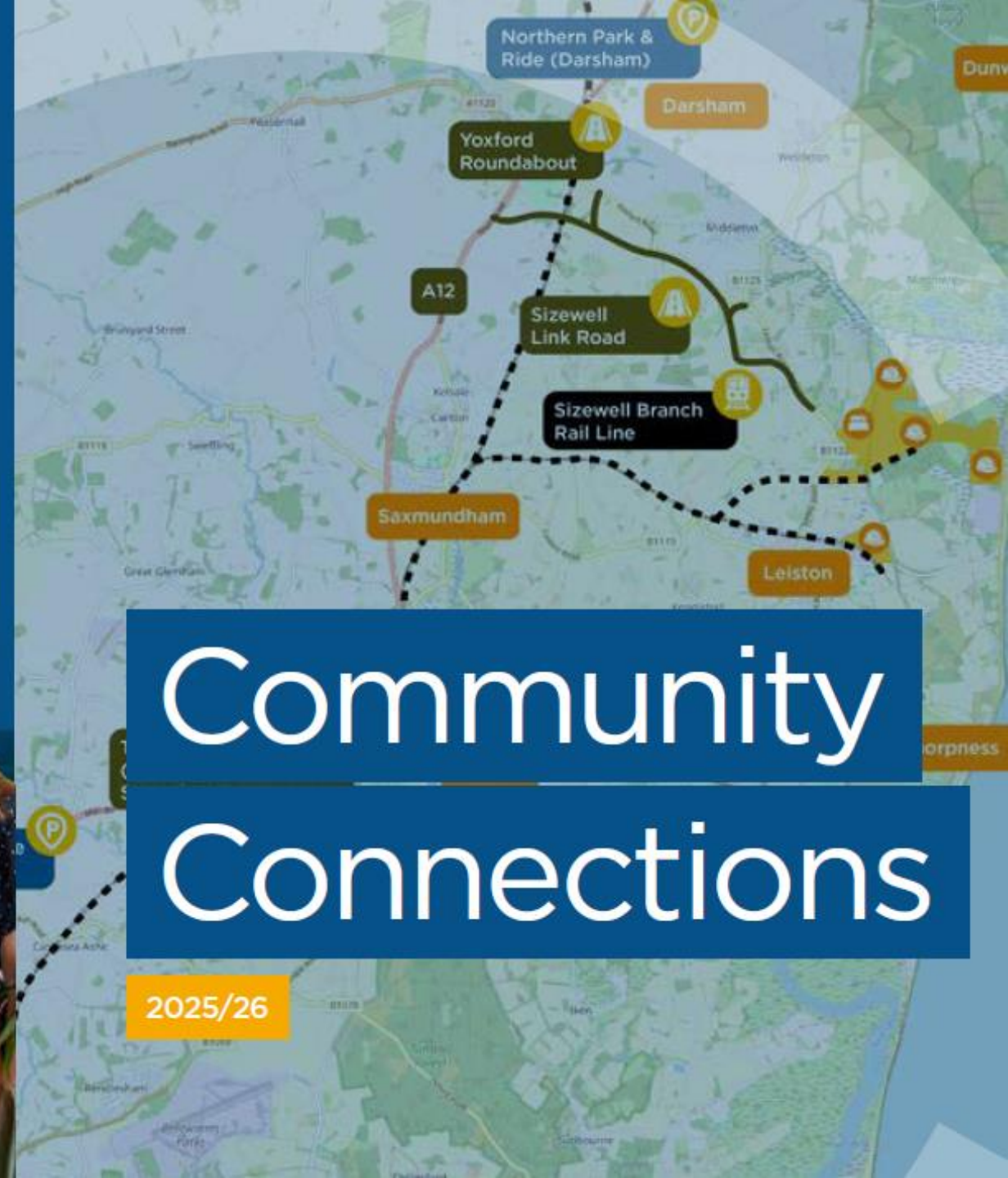
💻 [www.sizewellc.com](http://www.sizewellc.com)

✉️ @sizewellc

📄 [szcworkstracker.co.uk](http://szcworkstracker.co.uk)

✉️ [info@sizewellc.com](mailto:info@sizewellc.com)

Sizewell C  
COMMUNITY TEAM





- 6 Project newsletters
- 12 Community construction mailers
- 6 Town and Village newsletters
- Online Works Tracker

## PROJECT UPDATE

### MARCH 2025

There has been good progress on the Sizewell C project in the first month of 2025.

We are also pleased to announce the launch of the new Sizewell C online works tracker. The navigation has been improved and you can now sign up for email updates each time the works tracker is updated. We will be extending this to an SMS service later in the year. You can also check traffic management on the Suffolk County Council website Causeway one.network.

We are continuing to remove vegetation where necessary, which is overseen by an ecological clerk of work to ensure we avoid harm to wildlife.

As we conduct our clearance work during this period you may notice a lot of activity around our associated developments, particularly along the A12.

We have begun to implement the long term and necessary road closures that host our infrastructure projects. Notably, Willow Marsh Lane (A12 junction in Darsham) and Abbey Lane (Leiston) with diversions in place which you can find further details of on our works tracker.

As the designs and contractors are being agreed, we are beginning to firm up key dates of activity. Over the next month you will see enabling works to create the Yoxford roundabout which will improve safety at a busy junction, with works commencing in March.

We have also made further progress on the park and ride sites that will provide buses for workers to access site, reducing the number of vehicles on local roads.

Rail works also continue at pace and we have had several deliveries of rail track ahead of track laying. This will allow the first trains to move down the Leiston branch line to bring materials to our site on Buckleswood Road.

### FORUM SCHEDULE

Southern Transport Forum	Wednesday 12 March 2025	Stratford St Andrew Riverside Centre
Community Forum	Thursday 27 March 2025	High Lodge, Darsham
Main Development Site Forum	Wednesday 2 April 2025	Leiston Town Athletic Association
Northern Transport Forum	Wednesday 7 May 2025	Darsham Village Hall

All forum timings  
18:30 - 20:30  
(Arrival from 18:00)

For more information and for all 2025 forum dates visit [sizewellc.com/community/forums](https://sizewellc.com/community/forums)

VISIT THE WORKS TRACKER SITE



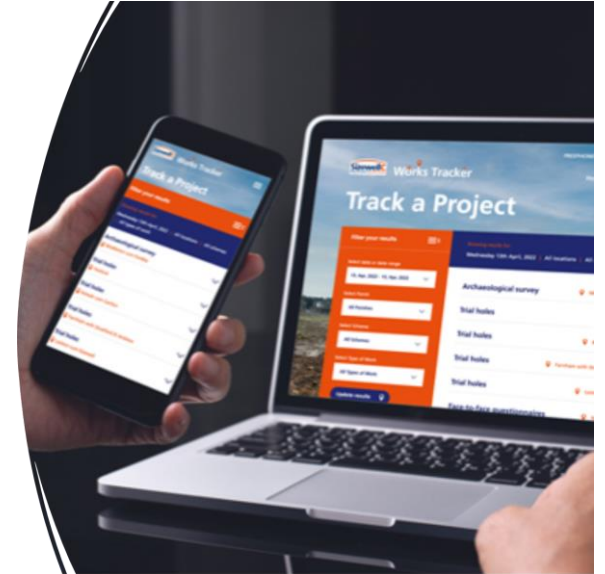




Community Radio

# Engagement Channels

- 24-hour community phone line
- SMS service
- Site specific Notice Boards – coming soon!
- Weekly roadworks online Notice Board
- County wide events





## Fostering Local Education Pipelines

Partnerships with schools and communities build strong education and skills pipelines aligned with workforce needs.

## Youth Engagement and Empowerment

Youth Councils enable students to contribute to projects and environmental goals, amplifying their voices.

## Career Pathways and Mentoring

Connecting students with STEM and energy sector opportunities guides early career interests and readiness.

## Community Inclusion and Resilience

Collaborations promote inclusivity, civic engagement, and long-term socio-economic resilience in communities.



- Design team working with Suffolk New College and key stakeholders, including SCC and ESC over the last few months to complete the design ready for the Planning Application Submission
- Planning Application will be ready for submission to ESC in October 2025, with a decision anticipated Q1 2026





- £23m over 10 years for East Suffolk projects
- Supports social, economic & environmental wellbeing
- Small grants up to £10k/year; larger multi-year grants available
- Communities closest to Sizewell C areas of work
- Apply via Suffolk Community Foundation: [www.suffolkcf.org.uk](http://www.suffolkcf.org.uk)
- Next round:
  - Opens: 20 Oct 2025
  - Closes: 4 Jan 2026 (23:59)
  - Decisions: Early April 2026
- Following round closes: 29 Mar 2026
- Allow 12 weeks after closing for decisions



# Upcoming events

Sizewell C  
The power of good for Britain

## CAREERS FAIR

16:00 - 19:00

Wednesday  
29 October

Sizewell Social Club

King Georges Avenue  
Leiston IP16 4JX

Come and  
talk to the  
experts!



## The Archaeology of Sizewell C

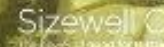
OPEN  
DAY 25  
OCT

Activities • Artefacts • Videos Sat. 10 am - 4 pm • Free Entry

## Artefacts from Two Village Bypass

Finds on display • Meet the archaeologists!

Riverside Centre  
Stratford St Andrew  
Saxmundham  
IP17 1LL



The Band of  
The Royal British Legion, Leiston



*Proudly presents the 2025*

## Festival of Remembrance

*Conducted by John Flack*

With Special Guest Performances from  
Sizewell Creative Choir  
Flight Sergeant Tye, Leiston Air Cadets

*In aid of The Poppy Appeal*

Wednesday 5<sup>th</sup> November 2025

7.30pm

Leiston Film Theatre

Tickets £7

Available at the box office or call 01728 830549

online at [leistonfilmtheatre.co.uk](http://leistonfilmtheatre.co.uk)





# Thank you

# Item 3 : Project Look Ahead for 2026 & Key Milestones

Damian Leydon, Site Delivery Director

# Progress so far

 Three **new nature reserves** covering the same area as **238 football pitches**

 **4,500,000** hours worked across our sites.  
That's over **500 years**

 **>100** Sizewell C apprentices

 **c. 7km** of permanent fence installed

 College on the Coast  
given the go ahead

 **1m sq.ft** of **warehousing** secured

 **Over 162** Contracts **awarded** - all Off-Site Infrastructure contracts let

 **>3,800** site inductions delivered

 **>1,760** local people onboarded

 **Chaplain support** embedded with **1,400** conversations recorded

 **11** hectares of port space secured at **East Anglian ports**  
That's over **15 football pitches** worth of space

 **Health & Wellbeing** at the heart of the project

 **133 Mental Health Buddies**

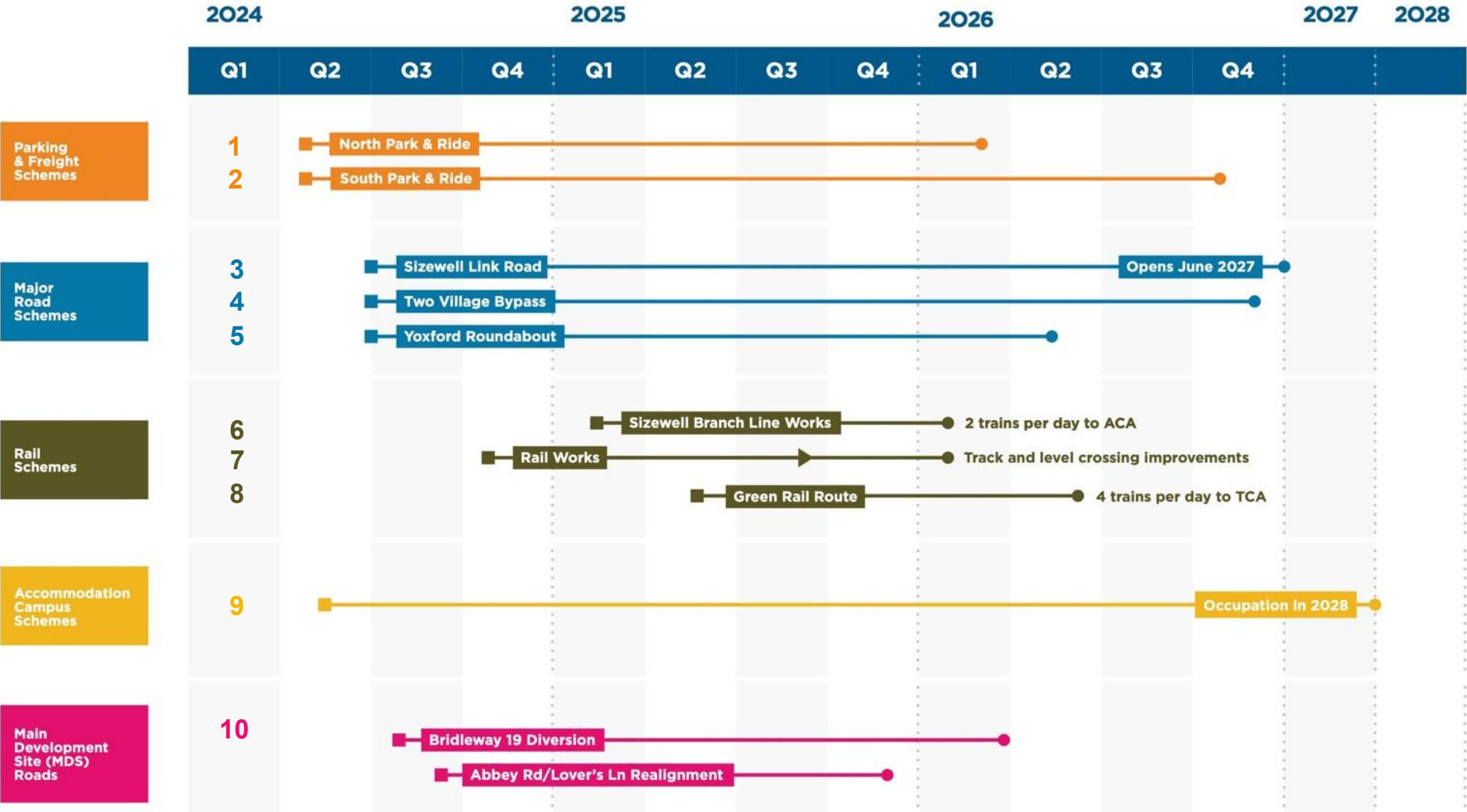
 2 additional accommodation sites secured - accommodating up to **+750 bed spaces**  
**1,213 total**

 **>1,000,000m<sup>2</sup>** of **archaeology** completed across the project  
That's the same as **1.5 Hyde Parks**

 21,000 plantation trees felled, off-set by **55,000** trees to be planted



# Site Delivery Lookahead



- Key**
- Work commences
  - Key milestone
  - Work complete

Main Development Site (MDS) Roads



# Main Construction Area





# Temporary & Ancillary Construction Areas

Temporary Construction Area



Ancillary Construction Area





# Steel Cut and Bend Facility

## Steel Cut and Bend Facility

- Temporary building to cut and bend steel bars needed to reinforce concrete

**Building construction** - noise insulation designed into walls and roof

## Roller shutter doors:

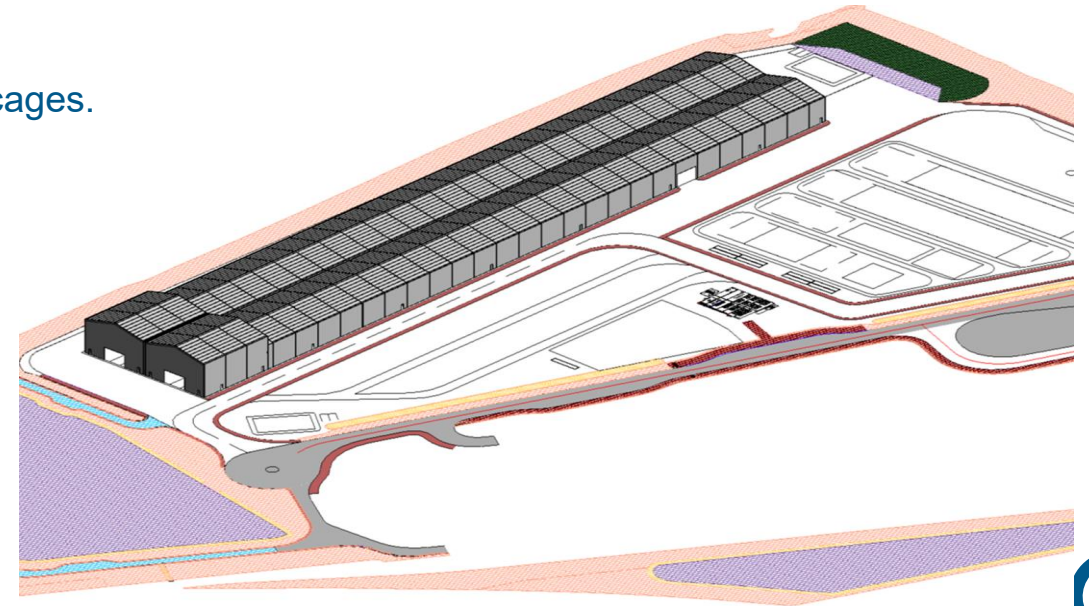
- Only the south door can open at night
- North door access restricted to daytime electric shunters only

## Demand

- 255,000 tonnes of reinforcing steel to be transported by rail
- Removing circa 10,000 HGVs off the road

## Transport efficiencies

- Transporting by rail – in bundles of bars rather than pre-fabricated cages. Means further reduction in HGVs and maximising rail line.



- Tunnel segments to be transported by rail
- Temporary storage area for tunnel segments will form the Sizewell C inflow and outflow tunnels
- Segments will be stacked and stored in place using a gantry crane
- Each train delivery removes c. 40 HGVs from the road = c.12,300 HGVs in total





# Desalination Plant

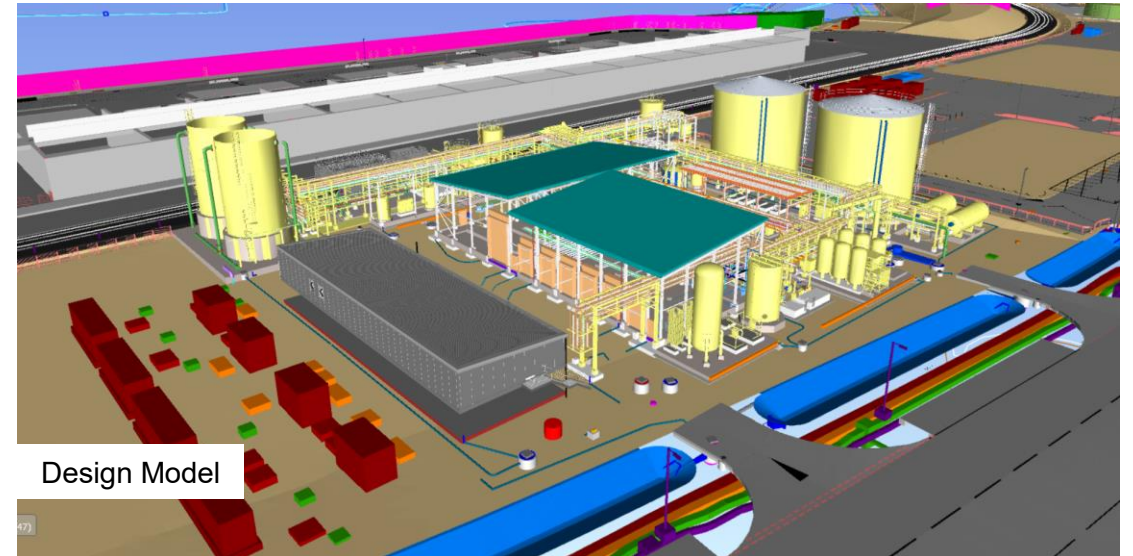
4950m<sup>3</sup>/day maximum production to supply clean water to Site

Construction Commencing on Site November 2025

Off-Site Manufacturing around the UK & Globally with Specialist Contractors Commenced

Regulated by the Environment Agency, Sizewell C will have regular engagement with EA & DWI to ensure Compliance. Continuous monitoring and data sharing with regulators

Water Production from Q3 2026



Design Model



Current Site



# Concrete Batching Plant

- Concrete Batching Plant construction commenced.
- Completion of all units Q3 2026.
- Aggregates supplied by adjacent railway and water supply from adjacent Desalination plant.
- 1,5 million m3 of concrete will be batched during its operation.
- Includes onsite laboratory concrete testing



# Campus Update





# External Buses



## External Routes

- Pakefield Village
- Northern P&R
- Southern P&R
- Martlesham P&R
- Saxmundham Station
- Ipswich Station

- Rail Station
- Car Park

# Nationally Significant Infrastructure Projects – NSIP’s

Layers

☒ NGET Transmission Network

☒ Public Rights Of Way

☒ Non-NSIP Energy Projects

☒ Nationally Significant Infrastructure Project (NSIP) Order Limits

☐ Constraints - Planning Policy

☐ Constraints - Public Sector Land

☐ Constraints - Landscape

☐ Constraints - Designations

☒ Administrative Boundaries

LionLink Order Limits

East Anglia One North (EA1N)

☒ Wind Farm Developable Area

☒ Order Limits

East Anglia Two (EA2)

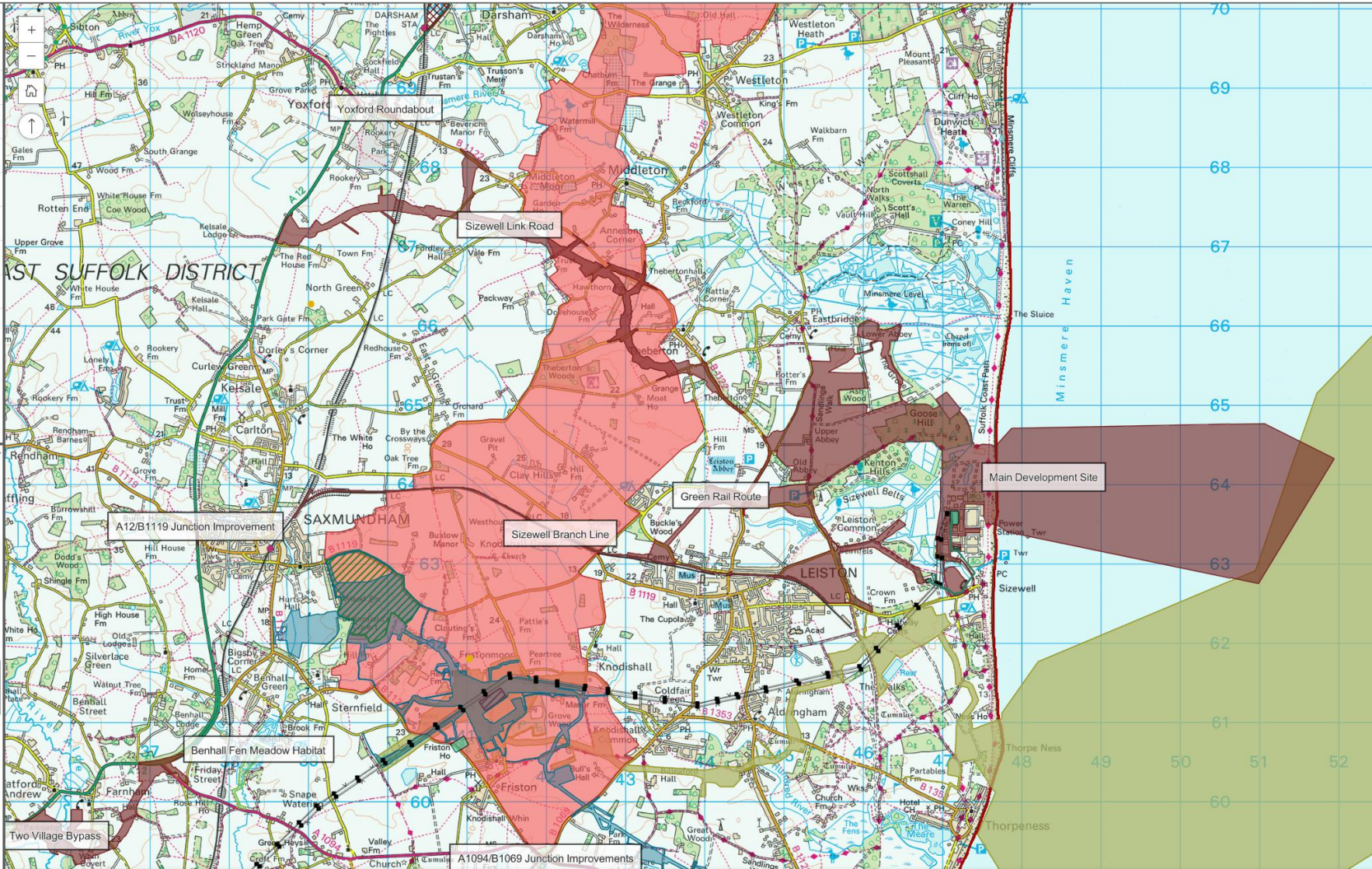
☒ Wind Farm Developable Area

☒ Order Limits

East Anglia Three (EA3)

☒ Wind Farm Developable Area

☒ Order Limits





# Thank you



# Item 4 : Occupational Health and Workforce Wellbeing

Ceri Bryant, Occupational Health and Wellbeing Manager



**Aim:** To establish an onsite health service, for the workforce, that is flexible and adaptable to changing health needs and requirements, and which ensures minimal impact on local public services.



## Delivering on the Deed of Obligation

- **On-site Medical Centre**
  - Site working hours coverage to avoid displacement into local NHS services
  - GP-led support and 24/7 telephone GP
  - Minor injuries Service
- **Emergency Response Capability**
  - Paramedic response to incidents on-site, reducing reliance on local A&E
  - Bespoke 4x4 Site Ambulance
  - Transfer Ambulance ordered
- **Risk Prevention and Health Promotion**
  - Pre-Induction Health Assessment
  - Safety Critical Role Fitness assurance, first aid capability
- **Random, For Cause and Post-Incident Drug and Alcohol Testing**
  - Zero tolerance for drug/alcohol misuse



### Scope of Work

- **Prevention of Ill Health**
- **Fitness For Work**
- **Treatment Service**

# On-Site Medical Centre

## Looking After Our People





# Staffing & Training Opportunities

## Leaving a Legacy

- Paramedics
- Nurses
- Occupational Health
  - Advisors
  - Technicians
  - Hygienist
- Physiotherapist
- GP
- Wellbeing Coordinator
- Chaplaincy Team
- Practice Management
- Receptionists / Administration
- Apprenticeships
- Work Placements
  - Local colleges
  - Universities
  - Schools
- Upskilling staff in emergency medicine, nurse prescribing, occupational health and hygiene qualifications.



## Building Psychological Safety

- Mental Health Buddies in place across site
- Employee Assistance Programme
  - 24/7 phone and text helpline – Emotional, Physical and Financial Wellbeing



EMOTIONAL WELLBEING	PHYSICAL WELLBEING	FINANCIAL WELLBEING
MENTAL HEALTH	ILLNESS	FINANCIAL SUPPORT
RELATIONSHIPS	INJURIES	BENEFIT ENTITLEMENT
LONELINESS	ADDICTIONS	BUDGETING
TRAUMA SUPPORT	SLEEP	DEBT MANAGEMENT
BULLYING	DIET & NUTRITION	TAX & CIS
LOSS & BEREAVEMENT	EXERCISE	LEGAL ADVICE
SUICIDAL THOUGHTS	HORMONE SUPPORT	TRAINING & CSCS FEES

*Sizewell C continues to be a company supporter of Lighthouse in 2025*

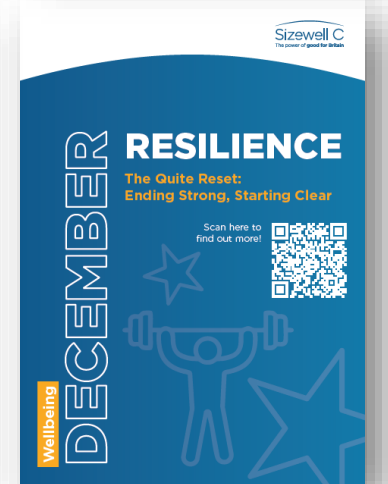
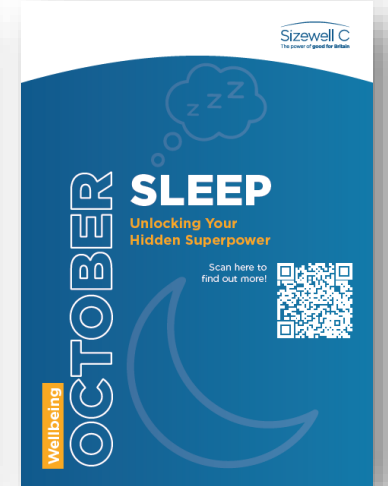
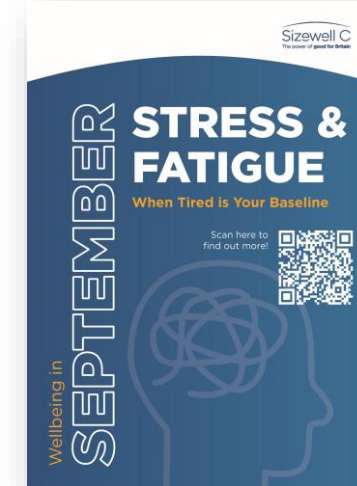




# Proactive Wellbeing Support

## Beyond the Clinical

- On site Chaplaincy established
- Wellbeing Officer in place
- Monthly Health & Wellbeing Campaigns
- Workforce Activities Programme
- Volunteering
- Collaboration with NHS, local charities & services





# Thank you



# Item 5 : Chaplaincy at Sizewell C

Clive Mobbs, Lead Chaplain

## WHAT

- Making pastoral care available to everyone whether they are working on the project long term or more temporarily
- Providing or facilitating spiritual support publicly and privately, at every level of the organisation
- Offering a sounding board for individuals and teams when social, or ethical dilemmas are encountered.

## HOW

- A calm and constant presence on site without being in the way
- “a mate journey” – Irrespective of faith or belief



# Building an inclusive culture around faith and belief



- It's a normal part of our organisational life
- You do not have to hide that part of your-self when at work.
- Living life in all abundance (fullness)

# How does the Chaplaincy work

## on a day to day basis?

- Ministry of presence
- Listening, observing and more listening
- Responding by balancing pastoral and spiritual needs
- Liaising with faith organisations in the wider community







# Thank you

# Item 6: Q&A

Via Town and Parish Representative  
Chair



Simon Amstutz – National Landscapes Manager

**Q1.** Can the SZC Company outline the process of where there are changes to the construction works, for example the changes to the works to install piling to the east of the site, and how local communities and stakeholders are informed of such changes and if there is an opportunity to influence the proposed changes?

**Q2.** The National Landscape team welcome the launch of the £12mn Natural Environment Improvement Fund that was agreed to mitigate the residual landscape and visual impacts of the SZC project (Schedule 11 para 2.5.1 of the Deed of Obligation). The National Landscape Manager, Simon Amstutz, and the current chair of the grants panel along with other panel members look forward to seeing grant applications for landscape scale projects. The application window is now open, and it is hoped that the first grants for projects will be awarded in Feb 2026. Does the SZC company think that the fund will mitigate the impacts of the new nuclear build?

## Cllr Nicky Corbett – Leiston-cum-Sizewell Town Council

Applicants to the SZC Community Fund are requested to include evidence-based research on the impact of SZC. The University of Suffolk socio-economic study could assist them in providing this information.

For example, it is now a concern that residents in Leiston and the surrounding parishes are experiencing varying levels of anxiety as a result of the SZC project. And local businesses are, anecdotally, noticing a decline in footfall which is being blamed in part on SZC. Yet engagement with the community by the UoS has not been evident for some time.

**Q1.** When is the first report from the University of Suffolk Socio-Economic study likely to be made public?

**Q2.** Evidence from the study might demonstrate that SZC is having a negative impact on residents' health and well-being and the Leiston economy. If so, please can you give examples of what measures could be introduced via the Deed of Obligation funding streams to mitigate these impacts?



## Theberton and Eastbridge Parish Council

An incident involving a vulnerable adult at The Lion Inn at Theberton on Friday 3<sup>rd</sup> October resulted in a call to both the police and ambulance service at about 9:30pm in the evening. The ambulance at first used the A1094 from Snape to get to the B1069 road to Leiston, but on arriving at the B1069 junction encountered the Road Closed signage. They had no information about where the closure was or the diversion routes operating. They returned to the A12 and then attempted to travel along the B1122 but were also concerned with the Road Closed signage, once again with no information on their systems about where the closure was or what the diversions were. Fortunately, they pressed on and still arrived at The Lion Inn approximately 35 minutes after the call was made. Whilst this incident had a positive ending, the fact that ambulance service crews seems to be oblivious to the various road closures and diversions is concerning as, on another occasion, the outcome and impacts may be much more severe. This is especially concerning when considering the existing A12 and B1122 closures alongside existing and future road closures, such as those variously at B1125/B1122 junction, Abbey Lane, Moat Road, Buckleswood Road, Lovers Lane, Harrow Lane, Hawthorn Road, Fordley Road, Littlemoor Road, Pretty Road and Church Road which could result in much more lengthy response times and put lives at risk.

**Q1.** Can SZC explain why the East of England Ambulance Service mobile crews GPS mapping systems are unaware of the road closures and diversions that are a consequence of the various road works along the A12, A1094 and B1122 etc. resulting in longer response times to incidents and what they intend to do to rectify this?

**Q2.** Residents are facing significantly longer waiting times for GP appointments. In some cases up to three weeks at Leiston Surgery, placing serious strain on local healthcare services. We understand SZC committed to providing its own on-site healthcare facilities for its workforce. This is a major concern for the community given the ongoing increase in worker numbers. Can SZC urgently confirm whether these healthcare services are now fully operational, and what measures are being taken to prevent further pressure on local GP practices and the wider community?

**Q1.** What is SZC's policy/approach to compensating local businesses for any loss of income or other material loss as a result of the SZC development?

**Cllr Steven Thorpe – Middleton-cum-Fordley Parishsh Council**

- Q1.** Sizewell C has stated a project finish date of mid to late 2030s. Can you be any more exact?
- Q2.** Can the parish councils and other relevant stakeholders be briefed on planting plans to screen the SLR, in particular that trees and plants do not die which has occurred on other highway projects?



## Aldeburgh Town Council

**Q1.** ATC would welcome an update on whether the rail branch line may remain after construction as a legacy for the area.

# Forum Schedule

## 2026

Our forums are open to local people to attend as observers – and they're another great way for you to hear about our latest work.

**All forum timings: 18:00–20:00** (arrival from 17:45)

**Leiston Town Athletic Association,**  
Victory Road, Leiston, IP16 4DQ

**High Lodge Darsham,**  
Haw Wood, Hinton, Nr Darsham, IP17 3QT

**Stratford St Andrew Riverside Centre,**  
6 Great Glemham Road, Stratford St Andrew, Saxmundham, IP17 1LL

**Woodbridge Rugby Club,**  
Hatchley Barn, Orford Road, Bromeswell, Woodbridge IP12 2PP

<b>Main Development Site Forum</b>	Wednesday 14 January 2026	Leiston Town Athletic Association
<b>Northern Transport Forum</b>	Wednesday 4 February 2026	High Lodge Darsham
<b>Southern Transport Forum</b>	Wednesday 4 March 2026	Stratford St Andrew Riverside Centre
<b>Community Forum</b>	Thursday 19 March 2026	Woodbridge Rugby Club
<b>Main Development Site Forum</b>	Wednesday 15 April 2026	Leiston Town Athletic Association
<b>Northern Transport Forum</b>	Wednesday 6 May 2026	High Lodge Darsham
<b>Southern Transport Forum</b>	Wednesday 3 June 2026	Stratford St Andrew Riverside Centre
<b>Main Development Site Forum</b>	Wednesday 8 July 2026	Leiston Town Athletic Association
<b>Northern Transport Forum</b>	Wednesday 5 August 2026	High Lodge Darsham
<b>Southern Transport Forum</b>	Wednesday 2 September 2026	Stratford St Andrew Riverside Centre
<b>Main Development Site Forum</b>	Wednesday 7 October 2026	Leiston Town Athletic Association
<b>Community Forum</b>	Thursday 22 October 2026	Sizewell Visitors Centre
<b>Northern Transport Forum</b>	Wednesday 4 November 2026	High Lodge Darsham
<b>Southern Transport Forum</b>	Wednesday 2 December 2026	Stratford St Andrew Riverside Centre



# Thank you