



Sizewell C Northern Transport Forum

Wednesday 6th August 2025

Darsham Village Hall

Agenda



Item 1: Welcome and Introduction of the Chair and Panel – (Chair)

Item 2: Meeting note and matters arising from Northern Transport Forum 7th May 2025 – (Chair)

Item 3: Corporate and Community Relations – (Richard Knight)

Item 4: Road and Construction Updates – (Dave Peacop, David Seal)

Item 5: Rail Update (Stephen Keighley, David Taylor)

Item 5: Traffic and Transport – (Rebecca Quigg and Steve Merry – SCC)

Item 6: Q&A – via Town and Parish Council Representative – (Chair)

Item 7: Dates of Future Meetings – (Chair)

Item 1: Welcome and Introductions

Sizewell C Panel

David Peacop	Site Operations Director
David Seal	Offsite Delivery Manager
Richard Bull	Head of Planning
Richard Knight	Senior Community Relations Manager
Stephen Keighley	Senior Project Manager – Rail
Rebecca Quigg	Transport Co-Ordinator
<u>Specialist Advisors</u>	
David Taylor	Network Rail Construction Manager
<u>Advisors</u>	
Zoe Botten	Community Relations Manager
Jez Porter	Stakeholder and External Roads Lead
Darren Benford-Brown	Community Safety Officer

Item 2: Meeting note and matters arising from NTF

7th May 2025

Chair

Item 3: Corporate and Community Relations

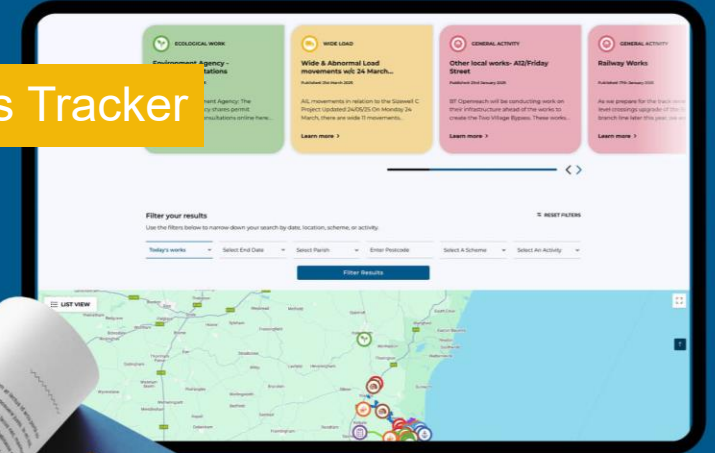
Richard Knight, Senior Community Relations Manager

Keeping communities updated

Parish/forum meetings



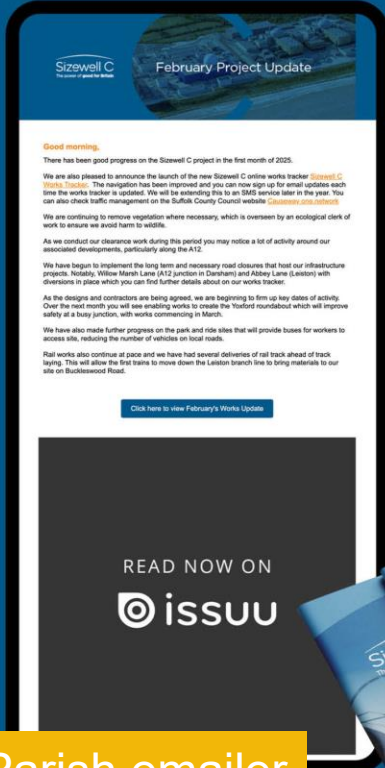
Works Tracker



Newsletter



Parish emailer



Parish magazines



Government Gives Sizewell C Green Light



The UK Government gave the go-ahead for Sizewell C on 10 June.

This is the first British-owned nuclear power station to be announced in over three decades, with HMG as a majority shareholder alongside EDF.

The Chancellor confirmed the funding at the GMB Congress ahead of the Government's spending review where £14.2 billion of investment will be allocated to the project.



Final Investment Decision



Joint MDs Nigel Cann and Julia Pyke with Sizewell C Chairman, John Holland-Kaye, meeting Chancellor of the Exchequer, Rachel Reeves MP, Secretary of State for Energy Security and Net Zero, Ed Miliband MP and our new investors La Caisse, Centrica and Amber Infrastructure and EDF at Imperial College on Tuesday.

- Sizewell C has secured its Final Investment Decision, giving the green light to the nuclear plant
- The project is estimated to cost around £38 billion, with investors and the supply chain incentivised to deliver below this
- For the first time, the British public will be co-owners of a British nuclear power station, with the government the largest shareholder in the project alongside EDF, Centrica, La Caisse and Amber Infrastructure.

Community Projects Receive £550,000 Funding Boost

The Sizewell C Community Fund will provide up to £23m over the next decade for charities, community groups and social enterprises which are delivering projects that benefit local communities in East Suffolk.

The focus of the fund is on reducing the impact of the construction of Sizewell C nuclear power station and leaving a legacy of benefit in the most affected communities.

Nine local organisations have benefited from a total of over a half a million pounds in the latest round of funding from the Sizewell C Community Fund.

£550,000 was awarded by the Suffolk Community Foundation in the third round of funding, bringing the total support awarded so far to almost £2m.



Item 3 10

College on the Coast

Plans for a new college in Leiston are progressing well and we will soon publish details for consultation. The new college in Leiston will strengthen local FE and adult training and create a lasting skills legacy.



Opportunity for local area.

The post-16 college will be delivered in partnership with Suffolk New College, aiming to transform local access to Further Education and specialist vocational training.

The three main components of the plans are:

- **College on the Coast**

Delivering technical, vocational, and academic pathways aligned to the workforce needs of Sizewell C and the wider energy, infrastructure, and engineering sectors.

- **Apprenticeship and Trainee Hub**

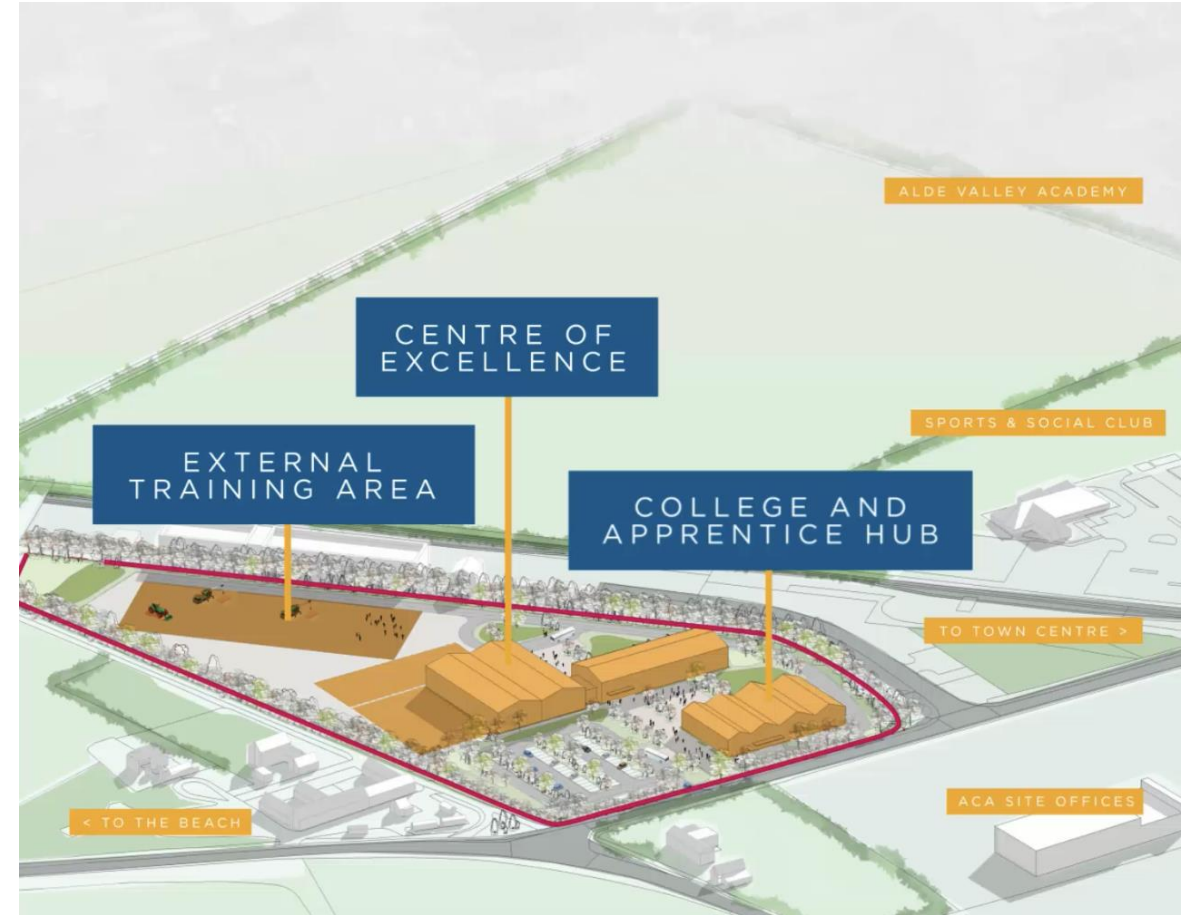
a dedicated centre for supporting up to 540 local apprentices, part of Sizewell C's commitment to delivering 1,500 apprentices during construction.

- **Centre of Excellence**

purpose-built, temporary training infrastructure for Sizewell C's project-facing workforce, focused on 'Right First Time' skills in civils, mechanical, electrical and welding.



College on the Coast designs



College on the Coast location

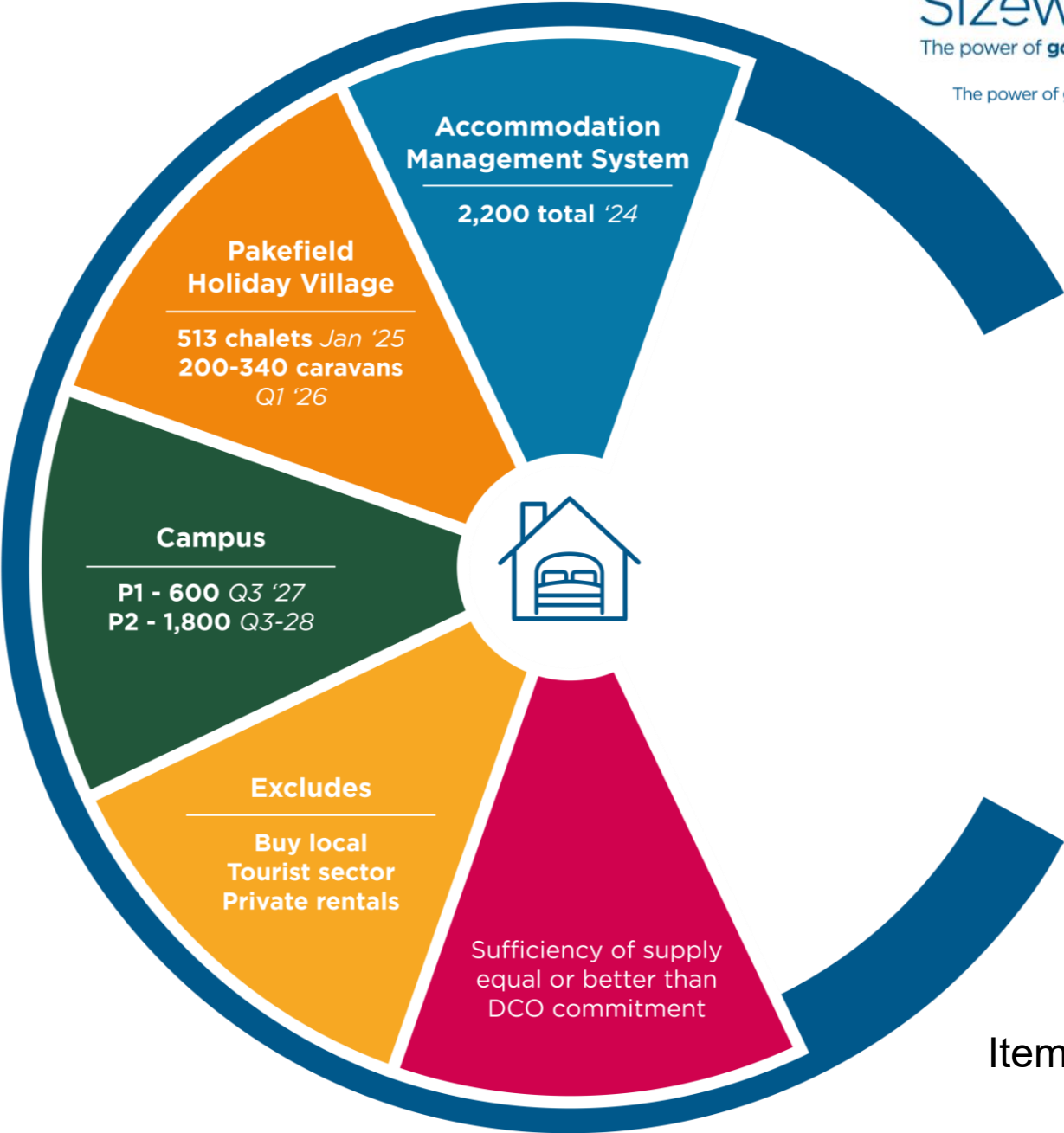


Accommodation update

Richard Knight, Senior Community Relations Manager

Accommodation

DCO (by Q4 2027)	3,000
So far, we currently have	2,713



Darsham High Lodge

High Lodge Leisure, 'High Lodge', is a 48.5-hectare site which lies on the east side of the A12 approximately 2km north of Darsham.

The site has an extant planning permission, granted in 2021, for 170 holiday lodges and associated infrastructure.



Darsham High Lodge

Proposed Use

- High Lodge site would provide exclusive accommodation option for SZC workers.
- High Lodge, benefits from being closely located to the Darsham Railway Station and the Northern Park and Ride site.
- A bus service will be available for workers to transport from High Lodge to site. Keeping cars off the road.
- The original planning consent is for **410** single beds and **280** double beds = **970** persons
- Proposed SZC occupancy would be $170 \times 4 =$ **680** persons

We will hold a pre-consultation public exhibition and presentation in the early Autumn. Venue and date to be confirmed

Planning Context

- Full planning permission was granted in February 2021 to redevelop the site
- The SZC workforce are now proposed to occupy the site for the duration of construction of Sizewell C.
- After construction this will be a legacy benefit for the tourism industry.
- There will be 170 lodges as originally proposed, albeit there will be minor changes to the design of the lodges and the layout of the site.
- On-site car parking is still proposed
- Length of stay to be longer term than tourism constraints.

Darsham High Lodge

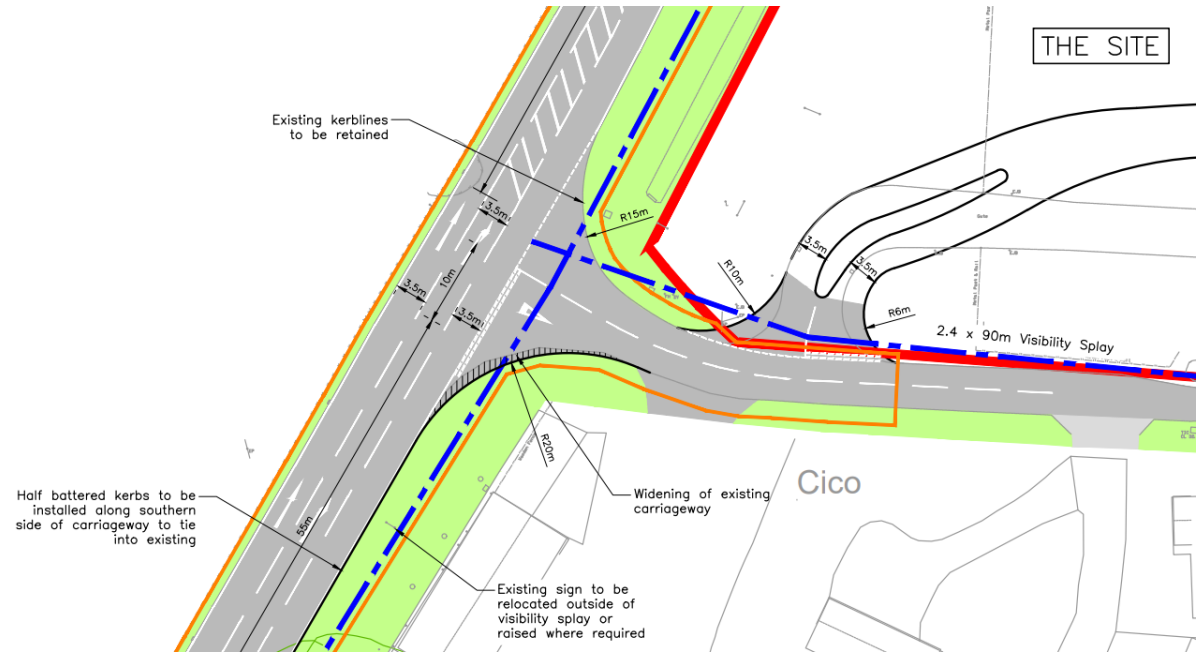
Current considerations and wider improvements

A12 junction improvements

- The previous planning consent secured improvements to the junction, to be informed by the design shown to the right. The detailed design is currently being drawn up.

Traffic generation

- The proposal would not alter the proposed distribution of SZC traffic to any great extent. If there are any unforeseen impacts from SZC traffic, then these can be reported and escalated to the Transport Review Group where appropriate.
- SZC workers will be moved to and from the site by bus and not by car, but workers could drive to local amenities such as restaurants after hours.
- SZC has a strict code-of-conduct that would be enforced to ensure appropriate behaviours are enforced.



Upcoming Sizewell C related or sponsored events





Sizewell Creative



Sizewell Creative will support the following events across the county this summer:

Leiston Community Film Festival	20 February
VE Day 80 service on Sizewell beach	8 May
Suffolk Show	28/29 May
First Light Festival	21/22 June
Alde Valley Academy Big Sing	July
Aldeburgh Carnival	18 August

The power of good for Britain



Archaeology Outreach



Our archaeologists will be sharing their finds at:

Suffolk Show	28-29 May 2025
First Light Festival	21-22 June 2025
Main Development Site Forum	2 July / 8 October 2025
Community Forum	23 October 2025

Pop-up displays/exhibitions/talks at the following locations:

Wickham Market Village Hall	14 June 2025
Darsham/Yoxford Village Hall	September 2025
Stratford St Andrew Riverside Centre	November 2025
Theberton & Eastbridge Village Hall	January 2026
Leiston	March 2026

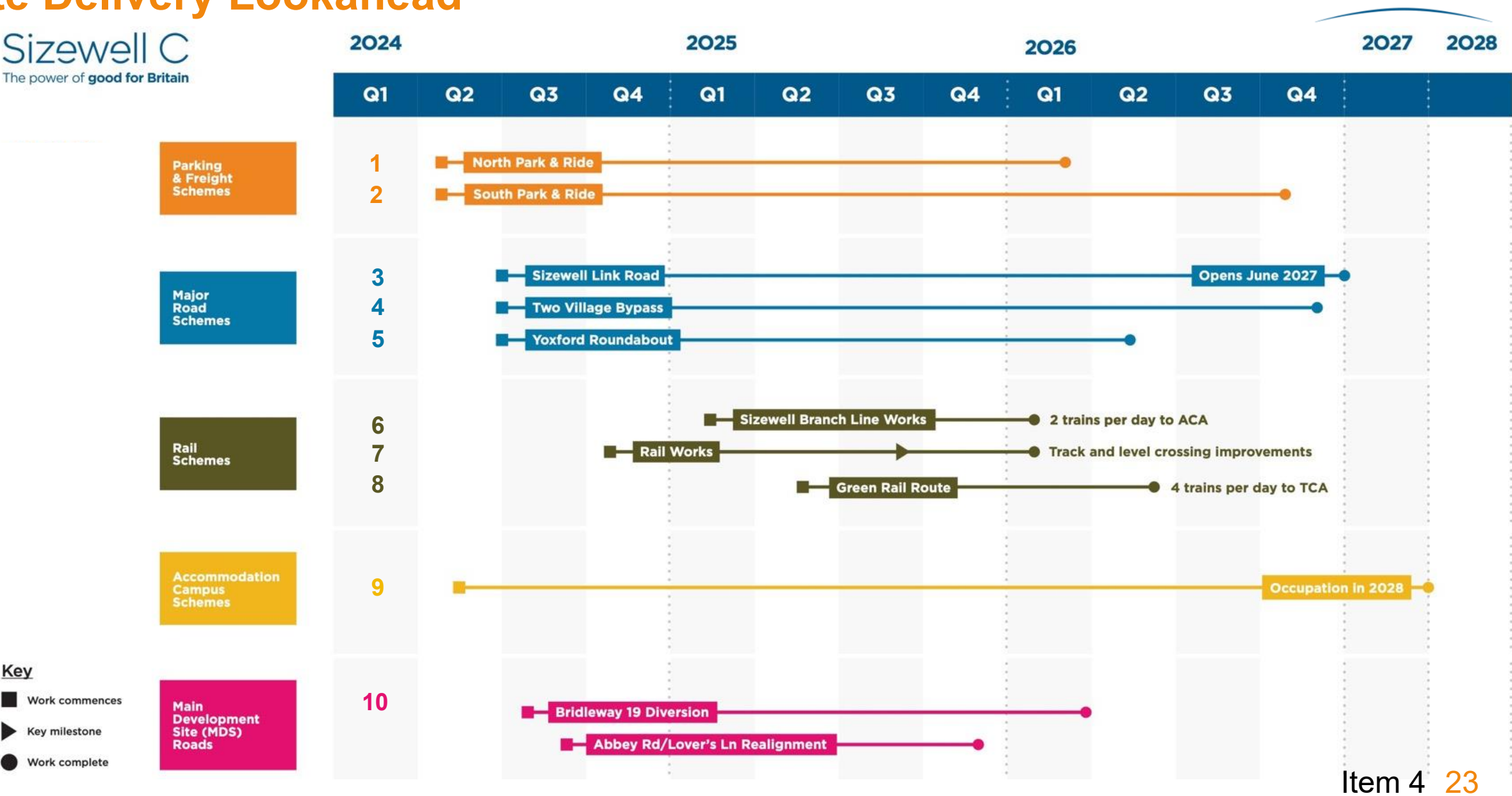
On-site open days at Wickham Market site - end June/July

Item 4: Road / Construction Update

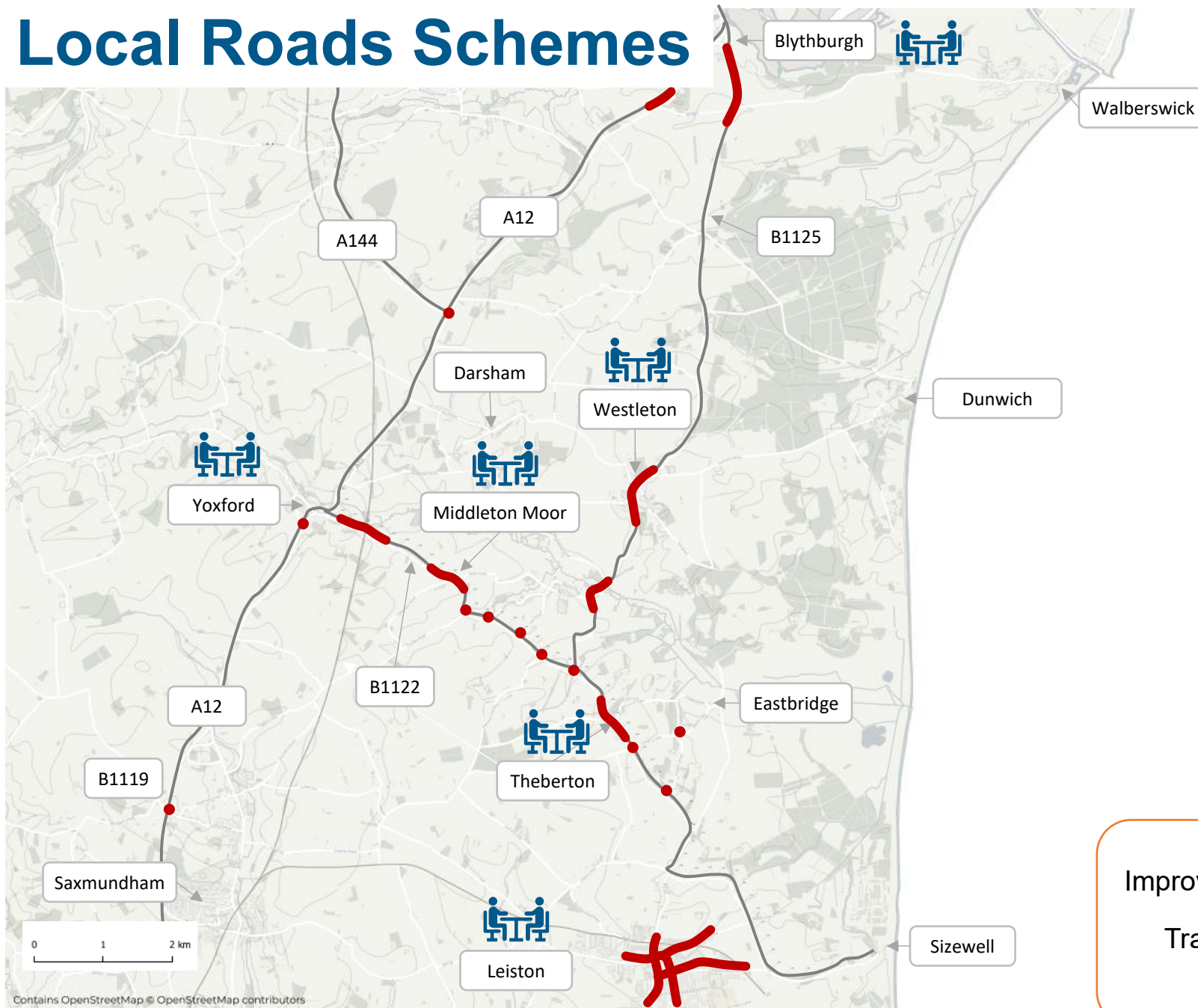
David Peacop and David Seal

Drone footage

Site Delivery Lookahead



Local Roads Schemes



Typical improvements

- New and enhanced pedestrian footways and crossings
- New road surfacing
- Village gateways
- Safety improvements and side road visibility

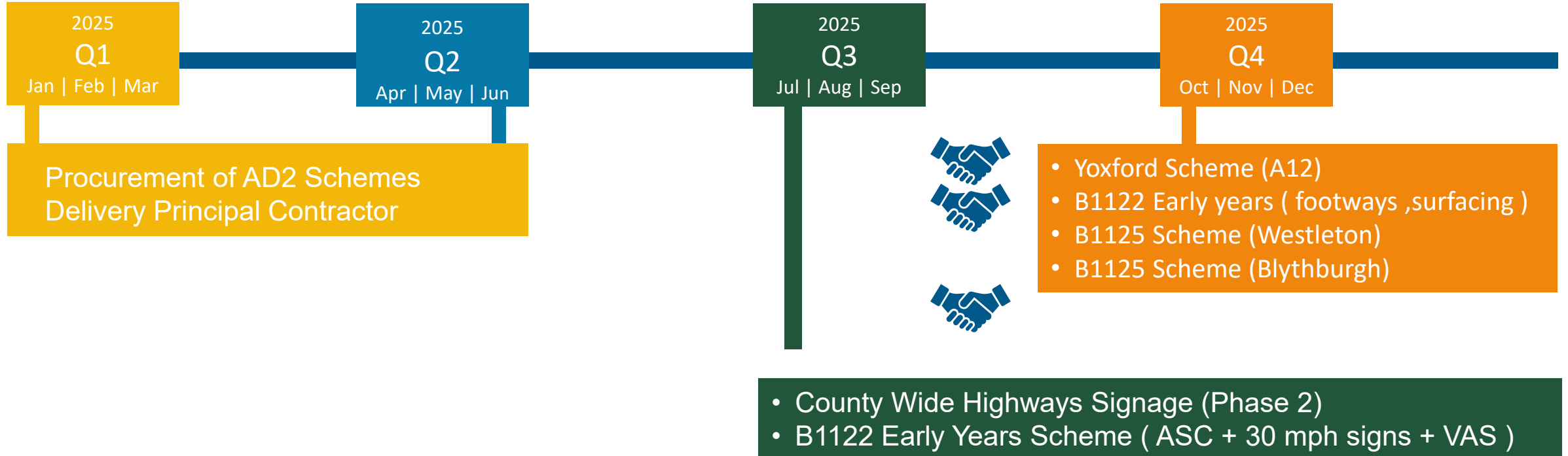
Improvement scheme

Transport Working
Group



Local Roads

2025 Anticipated Commencement Dates



Collaboration with Scottish Power Renewables

Blythburgh: B1125 Scheme and B1387 works



Progress

- Q4 works to commence on Blythburgh mitigation
- Ensure the works are coordinated with B1387

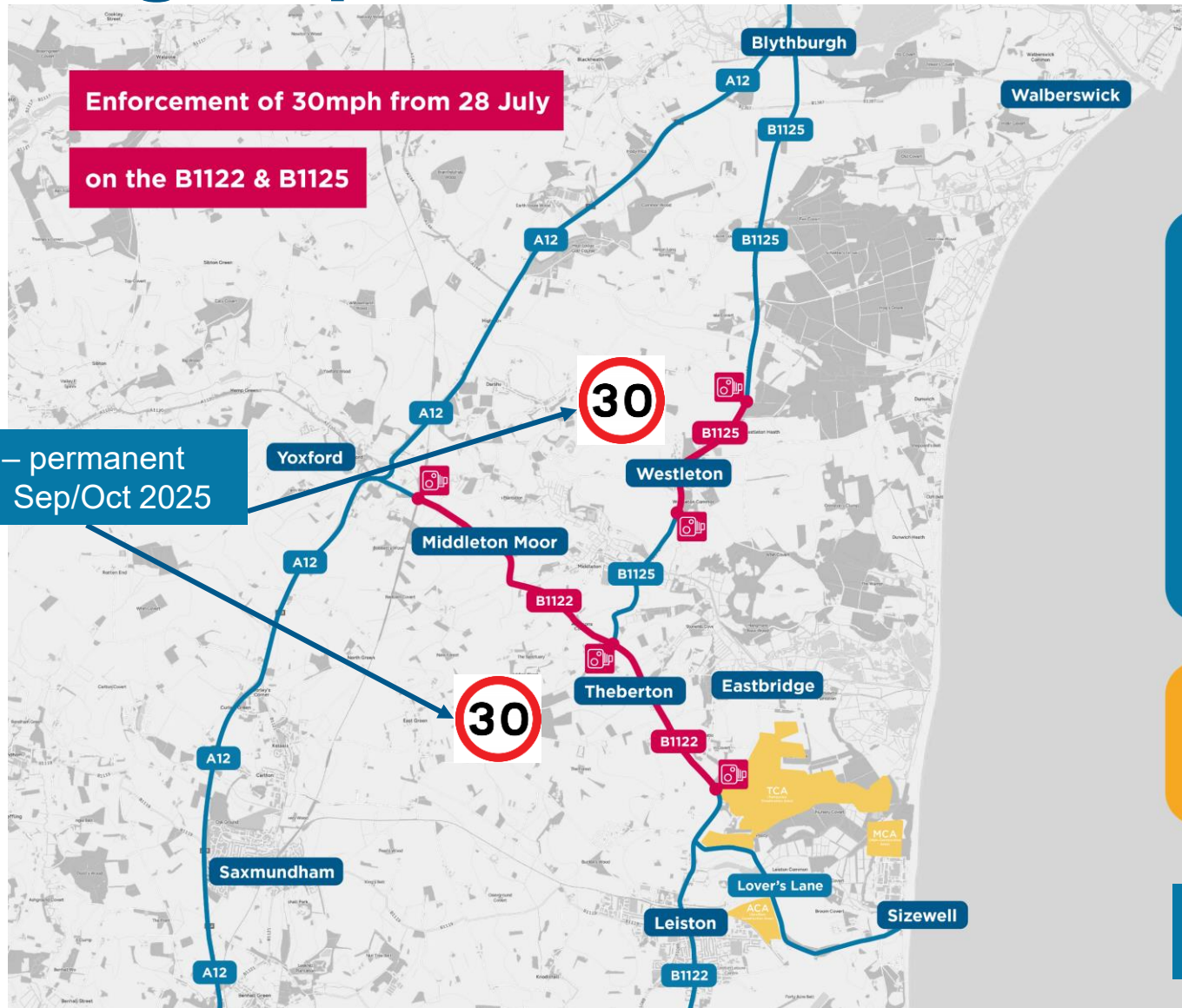
Scope of Works – B1387

- Patch and repair carriageway defects
- Overlay existing carriageway with additional asphalt layer full width
- Drainage improvements
- SZC to fund design and construction works by SCC for the above

Approximate Timescales (SCC)

- Design Q2-3 2025
- Construction Q4 2025 – Q1 2026

Average Speed Cameras



From 28 July the average speed cameras covering the 30mph section of the B1122 and the section of the B1125 through Westleton will begin enforcing speeding fines.

Please ensure you follow the Sizewell C Worker Code of Conduct and our life-saving rules by sticking to the speed limits.



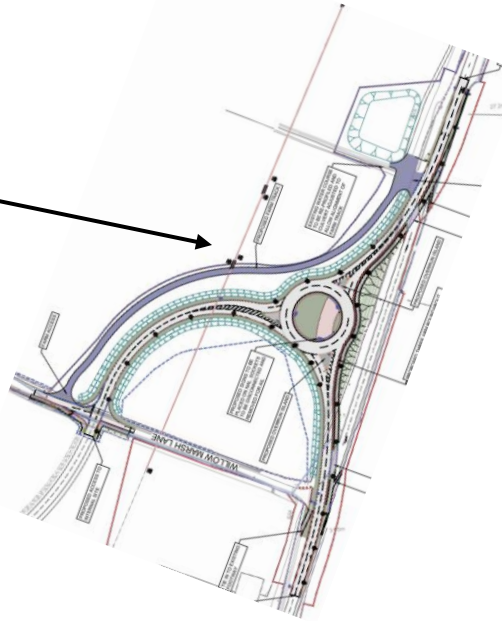
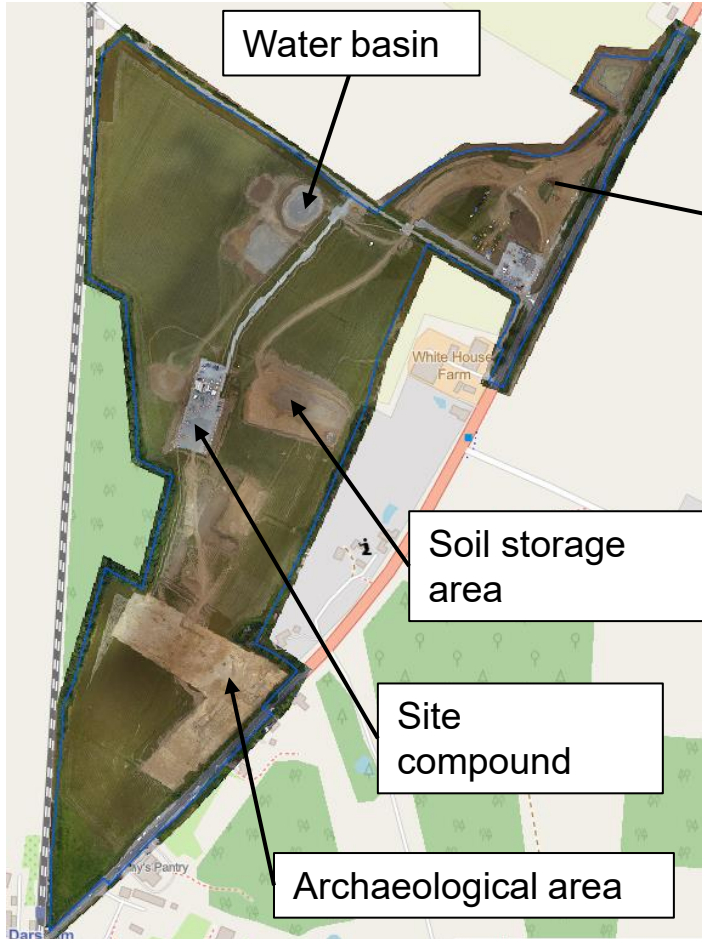
I never use a mobile device while driving and always respect speed limits.

Permanent power connections
Sep/Oct 2025

B1122 – Vehicle Activated Signs – Q3 2025



Northern Park and Ride (NPR) Early Works Q3 /Q4 2025



Q3 – 25

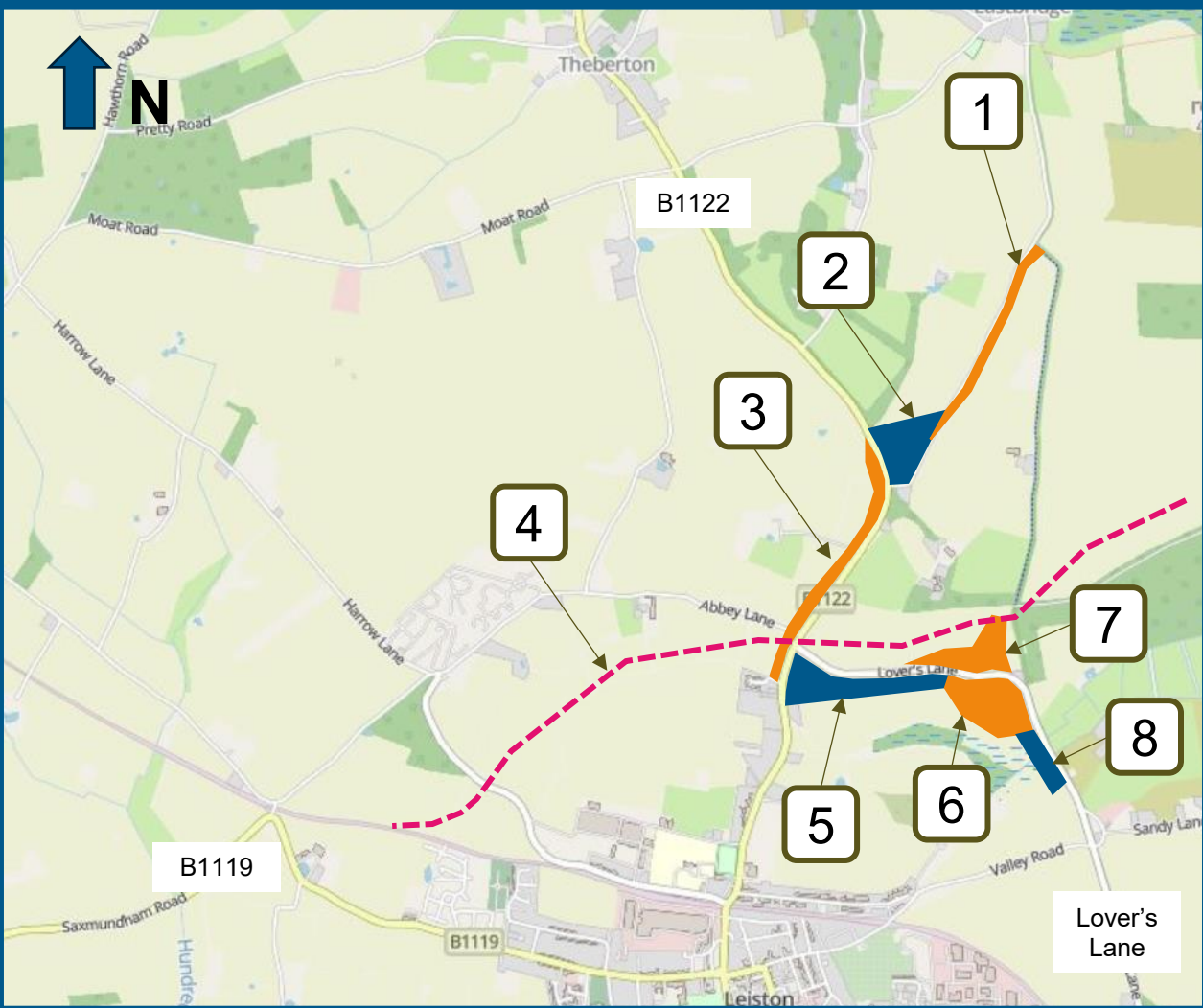
- Darsham crossing pedestrian works (traffic management coordination with wider network)
- Roundabout (ongoing)
- 30 mph speed limit installed for safety
- Utilities diversions

Q4 – 25

- Tie-in works for roundabout (some nightworks, traffic management coordination with wider network)
- Partial operation of Park and Ride. From October
- Roundabout works complete

Main Development Site Roads Q3 2025 & Q4 2025

CONSTRUCTION ACTIVITIES THROUGH AUGUST TO DECEMBER 2025



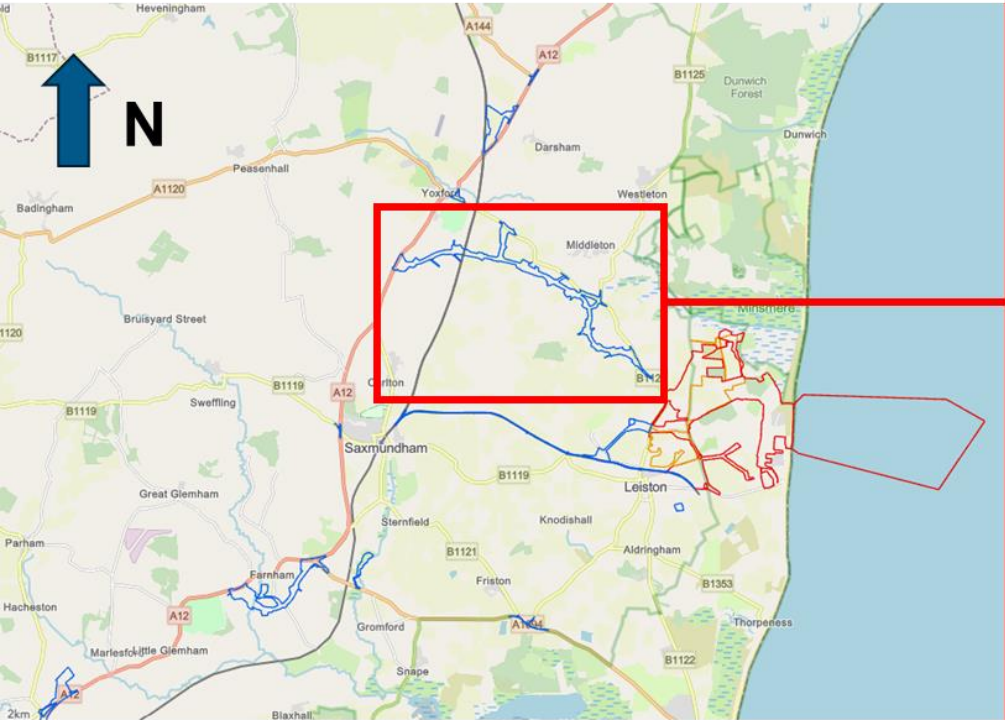
WORKS AREAS

TRAFFIC MANAGEMENT

- 1 Bridleway 19
- 2 North Plaza Roundabout
- 3 Bridleway 19
- 4 Green Rail Route
- 5 Lovers Lane Junction Realignment
- 6 Pond (WMZ6)
- 7 Secondary Access
- 8 Leiston Drain Crossing for Bridleway19

What	Where	When
Temporary Traffic Lights	Lovers Lane & Abbey Road	Ongoing, throughout.
Overnight Road Closure	Abbey Road (<i>Utilities</i>)	September
	Lovers Lane (<i>132KV</i>)	September – December
Weekend Road Closure	Lovers Lane (<i>Area 5</i>)	October 2025
	B1122 Abbey Road (<i>Area 5</i>)	September 2025
	B1122 Abbey Road (<i>Area 5</i>)	January 2026
	B1122 Abbey Road (<i>Area 2</i>)	February 2026 31

Sizewell Link Road (SLR)



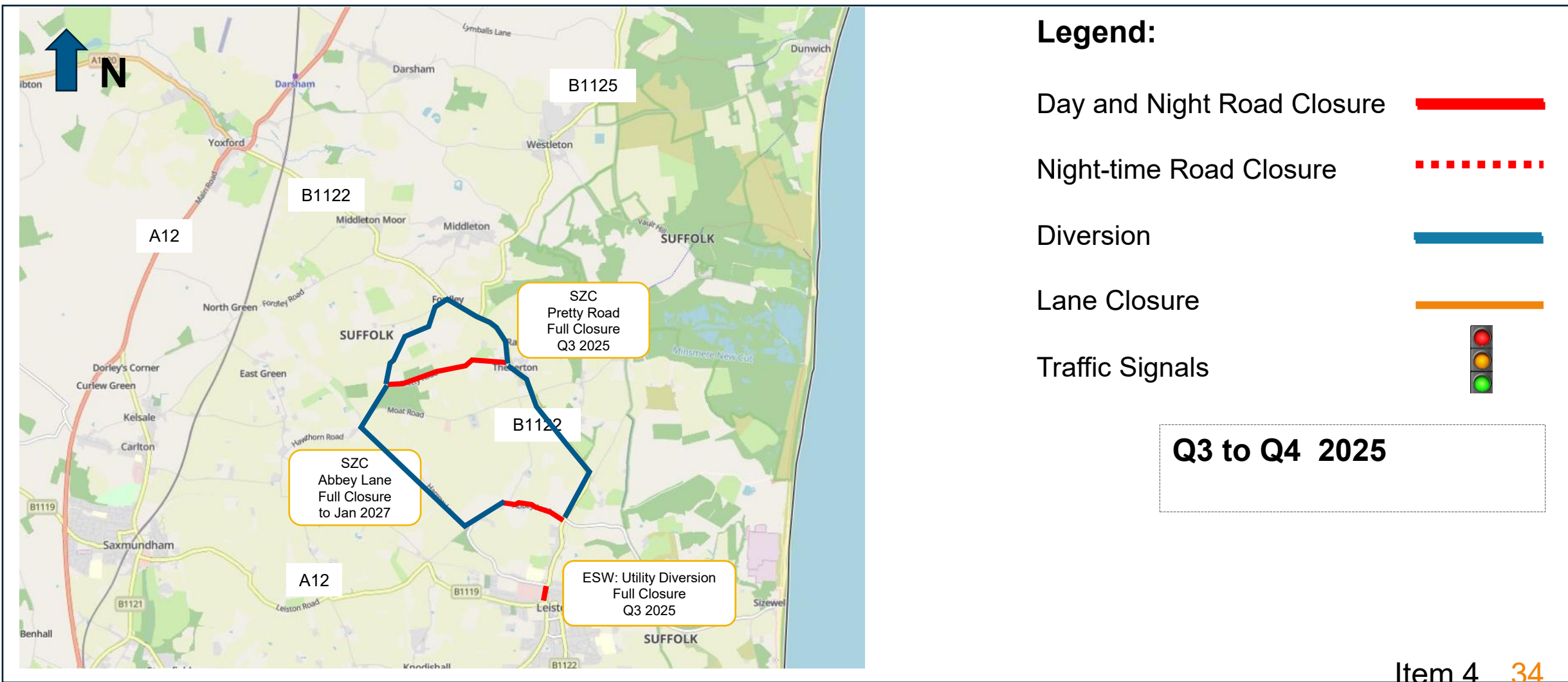
Sizewell Link Road



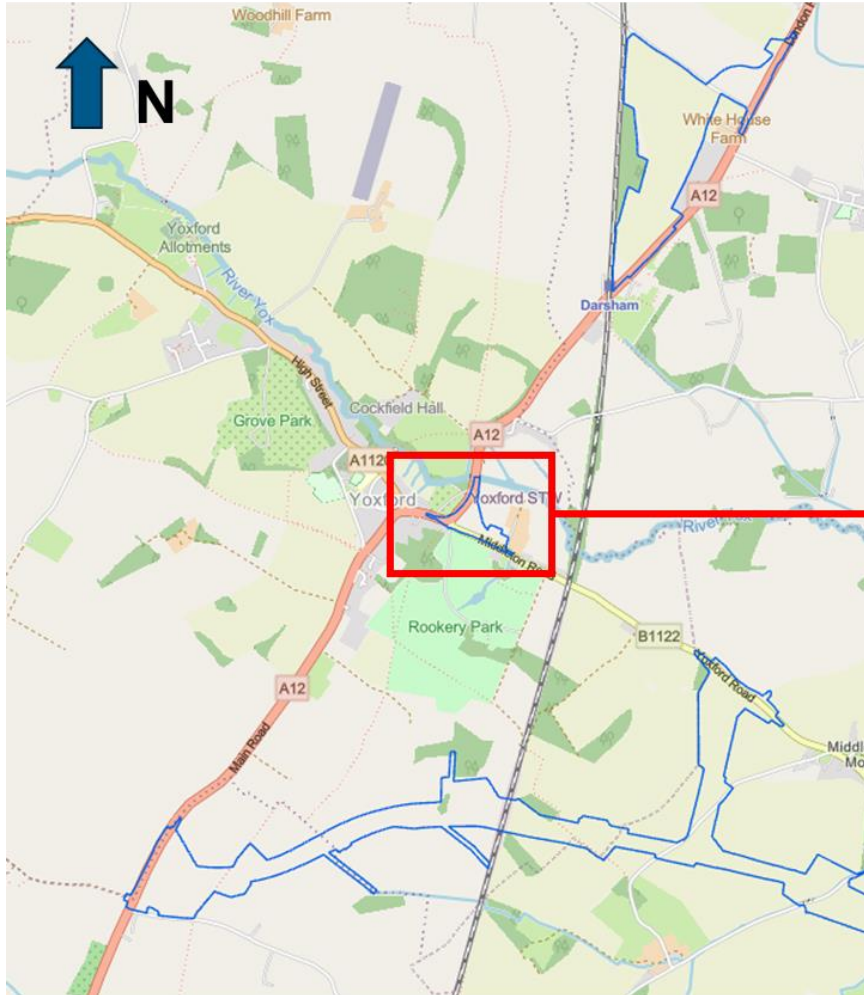
- Detail Design Complete. Final Technical Approval received by SCC
- Archaeology ongoing
- Construction Contract awarded to Galliford Try.
- Q 3 & 4 : Site establishment activities such as compound installation, haul road construction, temporary fencing setup and temporary bridges. Utilities and associated earthworks including ground profiling.

Sizewell Link Road and Green Rail Route

To enable resurfacing works and E&SW Water Main diversion at Leiston Level Crossing



Yoxford Roundabout



Yoxford Roundabout



Progress:

- Detail design, SCC technically approved
- Vegetation & ecology clearance complete
- Principal Contractor fully mobilised and site established
- Utility diversion works ongoing
- Earth-works commencing early August 2025
- Open Spring 2026

Item 5: Rail Update

Stephen Keighley and David Taylor (Network Rail)

Rail Delivery – Buckleswood compound works



Dust Suppression on site



Attenuation Pond Construction



Soil Stabilisation



Rail Delivery – ACA works



Ballast Delivery



Plain line Track Panels Delivery



Track Panels being stored in the ACA

Branchline track delivery (started July)

McCullochs Panel Lifters

Lifting & moving track panels



Moving rails for installation by NTC



High output New Track Construction Machine (NTC)

- 3.7km new track installed along branchline (west end of route)
- NTC: 50% quicker, improved quality, improved safety, minimises noise and disturbance



Ballast unloading



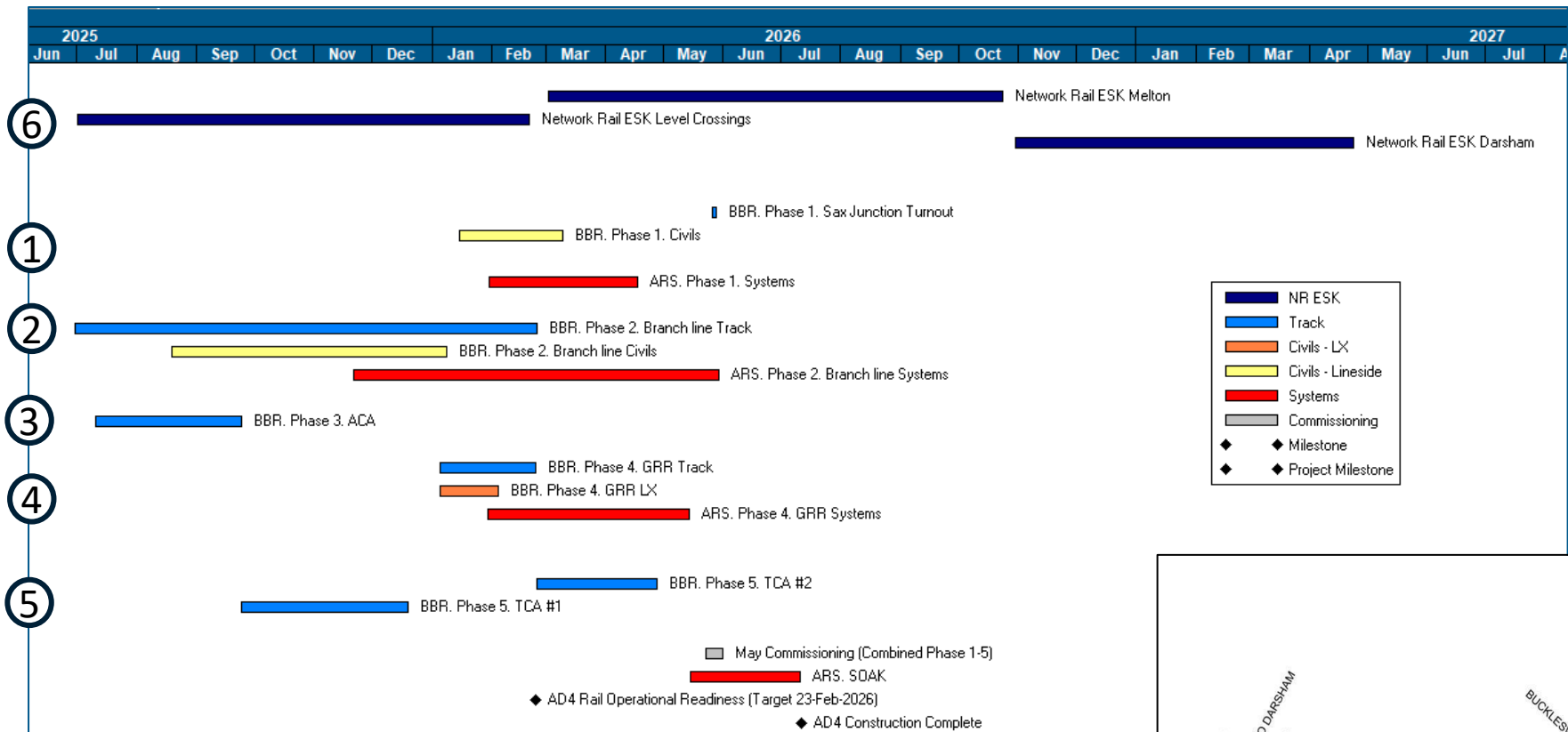
Tamping



Current status



Rail Delivery – Plan on a Page



	Location	Scope
1	Saxmundham Junction	Upgrade existing junction
2	Sizewell Branch line	Track upgrade Level crossing upgrade (7Nr) Signalling upgrade
3	ACA Sidings	Temporary sidings (3Nr)
4	Green Rail Route	Temporary connection to TCA New level crossings (2Nr)
5	TCA Sidings	Temporary sidings (8Nr)
6	East Suffolk line	Level Crossing upgrades (11Nr) Track upgrades Signalling upgrade



Northern Transport Forum

Darsham Level Crossing

Darsham Level Crossing

Network Rail are continuing to progress single option design to upgrade the existing infrastructure to a full barrier level crossing with obstacle detection (OD Mk2).

Surveys have commenced onsite and will continue through the summer and early autumn, using overnight access to avoid disruption.

A multidisciplinary site visit, including attendance from Greater Anglia, has also been held to discuss in detail the proposed upgrades.

Network Rail are working closely with the Sizewell Park & Ride team to ensure minimum disruption to the A12 where possible.

The project is still on target for commissioning Spring 2027.



Current Survey Works



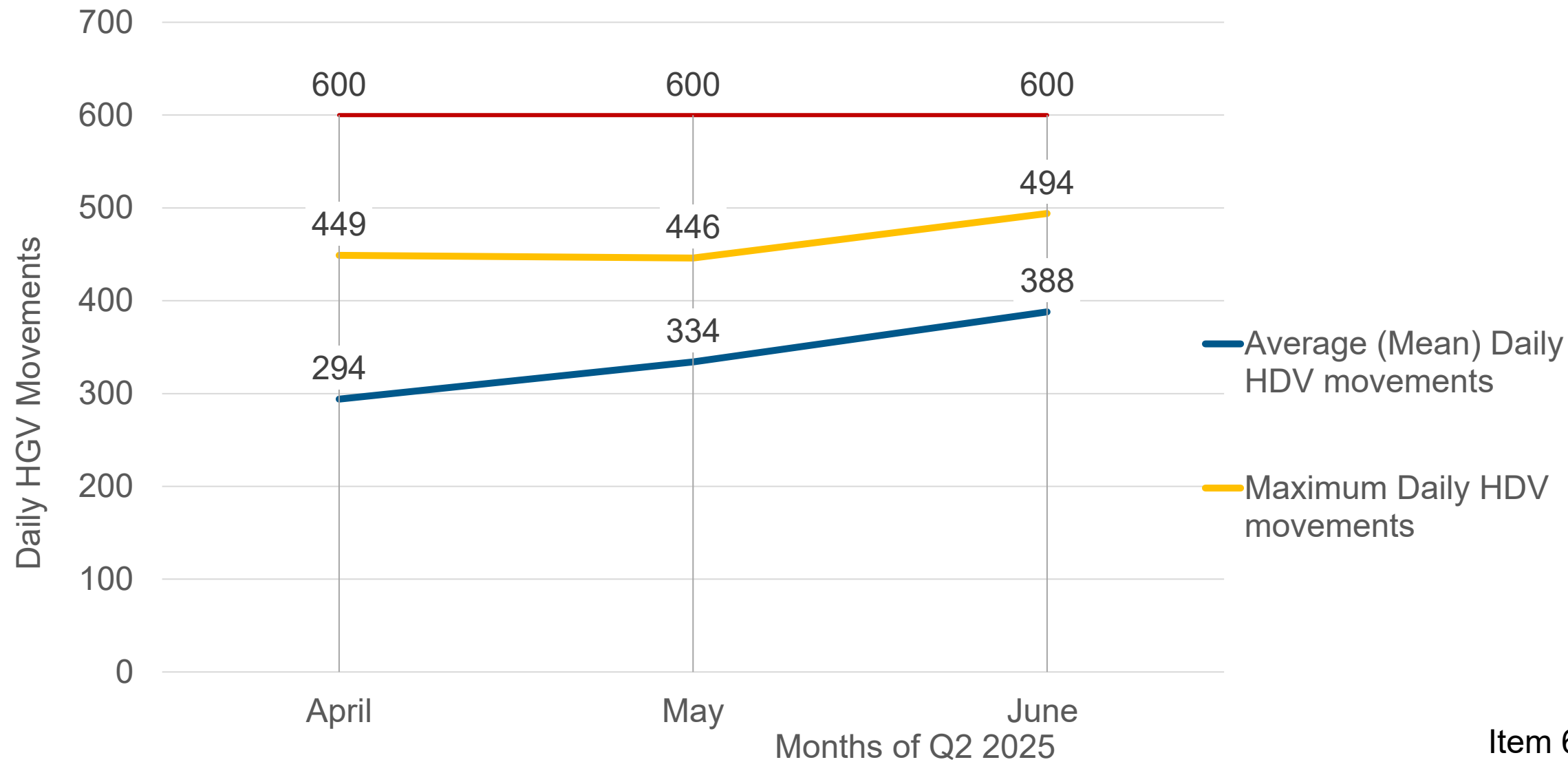
Item 6: Traffic and Transport

Rebecca Quigg, Transport Coordinator

Steve Merry, Suffolk County Council Highways

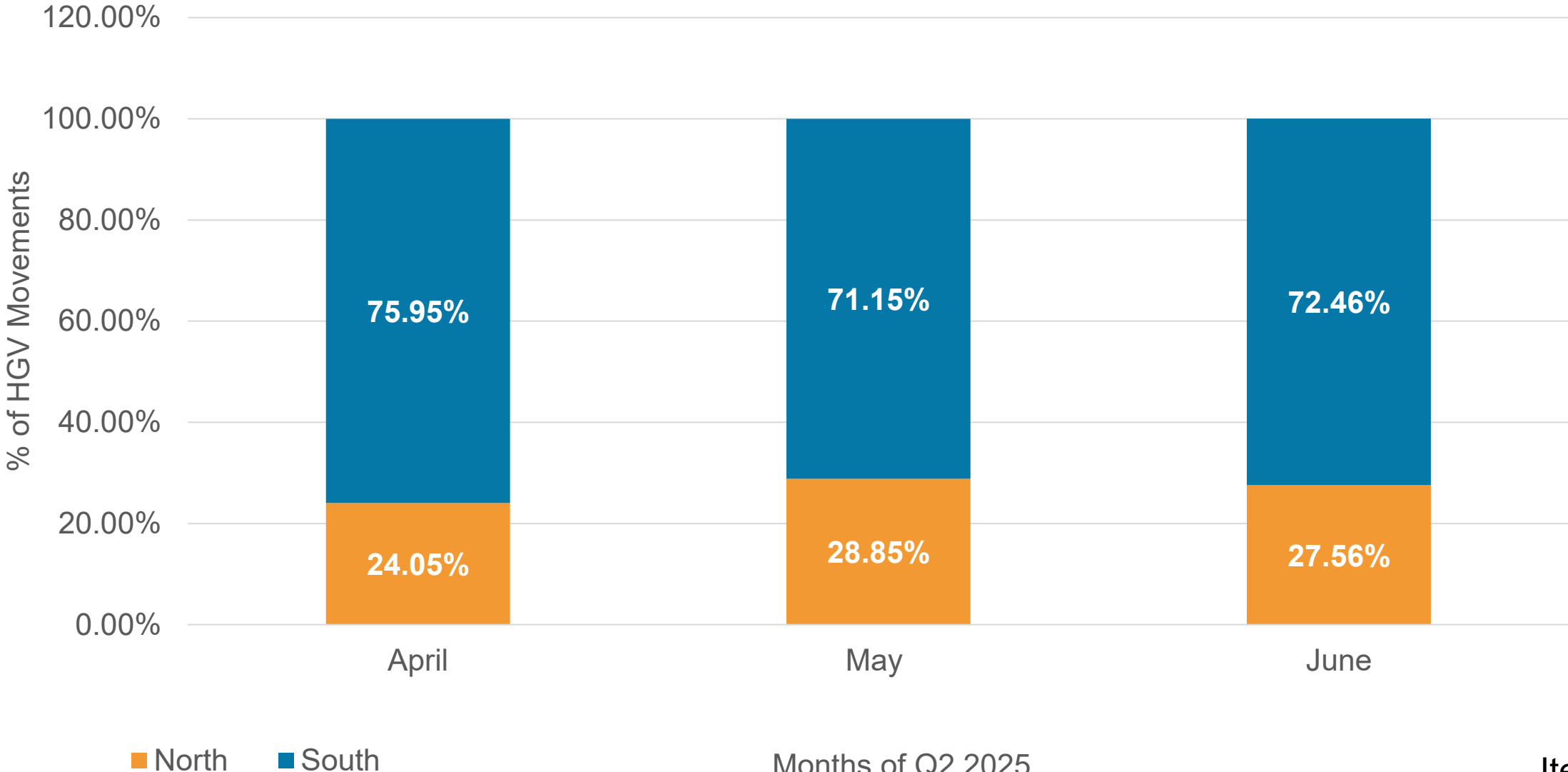
Transport Monitoring Reporting Q2 2025

Average (Mean) and Maximum Daily HDV Movements



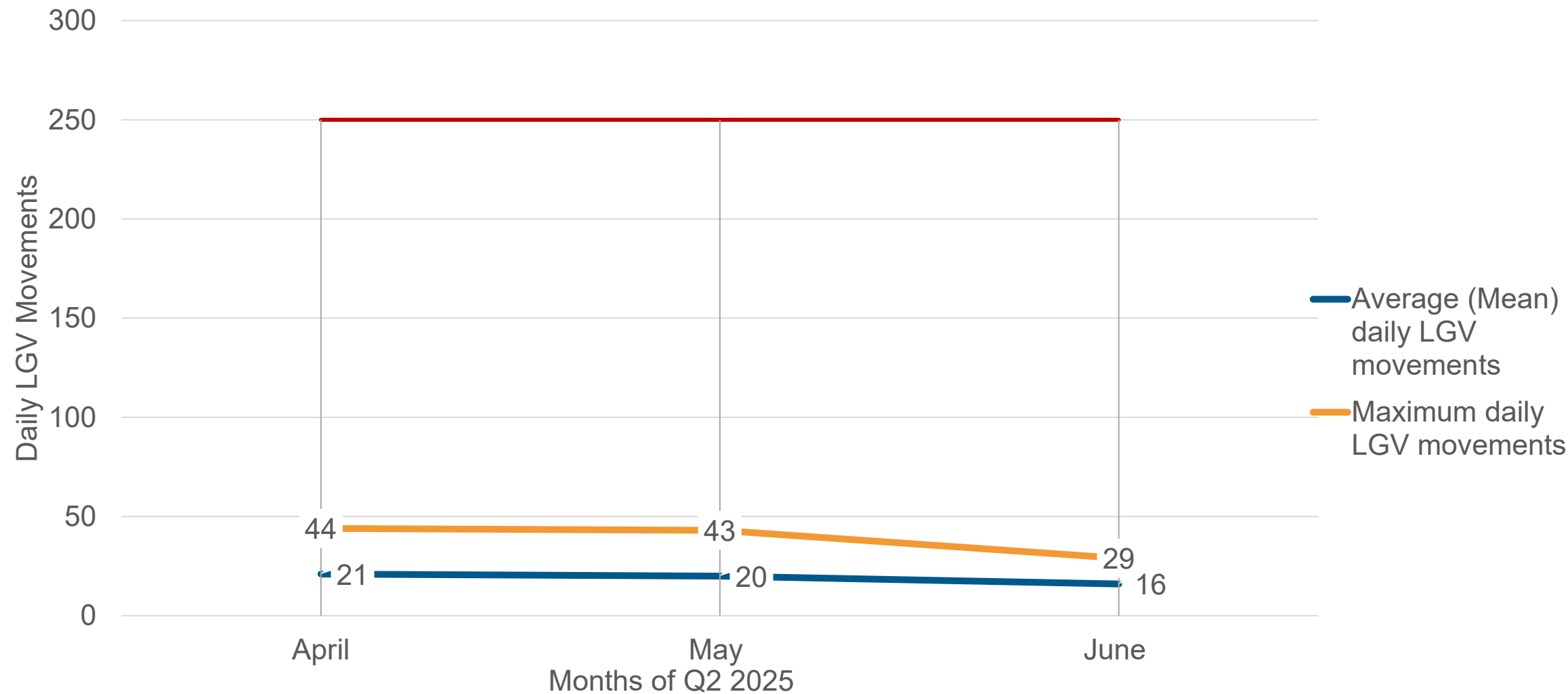
Transport Monitoring Reporting Q2 2025

Directional Split of HGV Movements



Transport Monitoring Reporting Q2 2025

Average (Mean) and Maximum LGV Movements



Transport Review Group Update

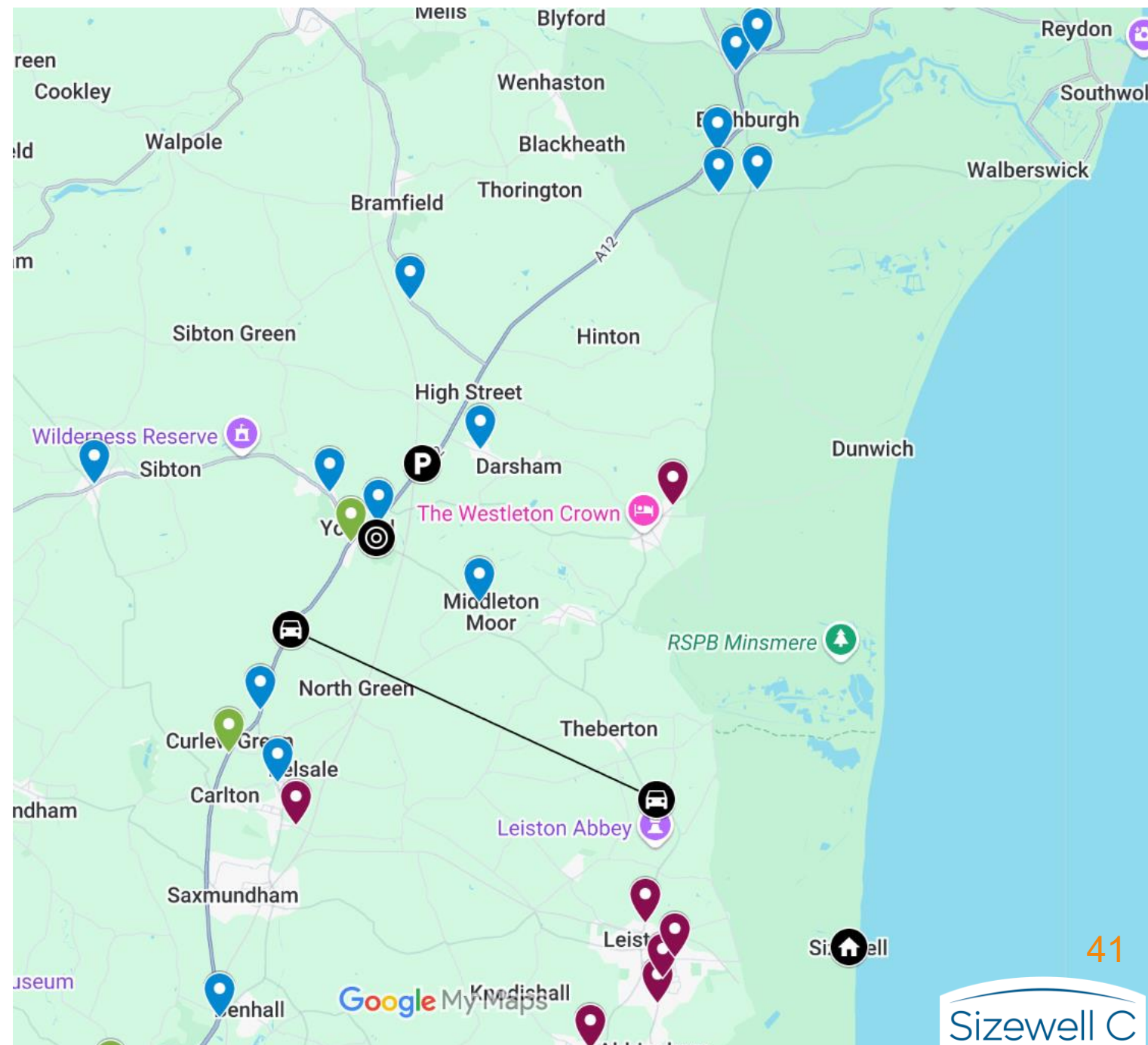
- Last meeting on 23 July 2025
- Papers to be uploaded to ESC website next week
- **Key topics of discussion**
 - Permanent traffic monitoring
 - Results of latest traffic monitoring survey
 - CTMP review
 - Key accesses to the off-site infrastructure sites

Transport Working Groups

- Designs have been in progress over the summer
- Dates for next working groups are now going in the diary for September
- Yoxford, Westleton and Leiston schemes have been formally accepted by their working groups

Traffic Monitoring 2025

- Next round of traffic monitoring took place at the end of April 2025
- Results were presented to the TRG on 23 July 2025
- TRG is continuing to monitor biannual sites
- Snapshot monitoring survey to take place in August, including bank holiday weekend
- TRG has agreed to take forward 7 permanent monitoring sites, subject to funding agreement



Item 7: Q&A

Via Town and Parish Council Representative
Chair

Pre-Submitted Question: Peasehall Parish Council

An increase of HGV vehicles passing through Peasehall on the A1120 has been noticed in recent months, both empty & with a full load, many of them have been marked with 'HIGHWAYS MAINTENANCE' across the back. We were told in an answer to a question in November 2024, at the NT meeting, that all vehicles relating to SZC would be marked with a blue SZC plaque.

To avoid any incorrect reports from our residents in respect of vehicles passing through Peasehall, please could you supply a rear-view photograph of an HGV fitted with the SZC blue plaque to display on our village noticeboard. Our Chairman recently came to the SZC site entrance to obtain this photograph himself but in the 10 minutes he was there, not one of the many HGV's using the entrance were displaying a blue plaque.

Q1. Are all the vehicles working on the extensive groundwork for SZC and all the related road/rail construction works, being marked with the SZC blue plaque please?

Q2. If not, could they be marked please? as this would reassure Peasehall residents that the vehicles passing through our village are not related to SZC

Pre-Submitted Question: Bramfield and Thorington Parish Council

Q1. Bramfield and Thorington Parish Council would like clarity with regard to the A12 and A144 junction together with that of the A12 and Hinton Road. In the original scheme for the Sizewell C, potential improvement of the A12/A144 junction received very little attention. The proposed scheme for High Lodge would significantly change that proposal in the view of our councillors and that of the local residents. What proposals do Sizewell C have for what is already a difficult set of junctions with a record for accidents on a regular basis?

Q2. The village of Bramfield is mainly a conservation area with a significant number of old (some 400 years old) buildings less than 4 feet from the road. The A144 is also a road with a significant history of traffic incidents. What support do Sizewell C suggest for the protection of the village of Bramfield with the sizeable increase in the traffic on the A144 that will result from the proposed development at High Lodge?

Pre-Submitted Question: Darsham Parish Council

Q1. Darsham Parish Council has grave concerns about the SZC plan to use High Lodge leisure facilities for workforce accommodation. Can the Forum please provide details of the total number of SZC personnel that will occupy the site at any one time.

Q2. Given the proximity of the village and the difficulty of turning out on to the A12, can the forum also explain how staff will be ferried backwards and forwards from High Lodge to avoid adding to already congested sections of the A12 between Darsham and Yoxford?.

Pre-Submitted Question: Leiston-cum-Sizewell Town Council

The Council had been made aware of concerns from residents in connection with the current rail movements through the town.

Q1. Firstly, wagons are uncovered and during the dry weather residents along the trackside are reporting dust inside their properties and have concerns about health issues from breathing in dust particles. Please can this be looked into and consideration given to covering the wagons?

Q2. Secondly, for each delivery the engine idles for up to 20 minutes very close to properties near the crossing gates. Residents report that diesel fumes and noise are uncomfortable. While we understand that until automatic barriers are in place the gates need opening manually, we ask if there could be a better alternative to this arrangement, to avoid long periods when the engine is idling close to homes?

The Network Rail website reports that there will be two deliveries (there and back) daily from Saxmundham to the ACA from January until the green rail route is completed. This is more than we had been led to believe. Please can you clarify the number of rail movements expected through the town, the likely duration of this arrangement and how many movements there will be on this route once the green rail route is in operation?

Pre-Submitted Question: Blythburgh Parish Council

Q1. What facilities will be provided for workers at the High Lodge site; will they be free to use private cars to travel to nearby pubs ? Will workers at the High Lodge site be travelling there in their private vehicles at beginning and end of their working week ?

Q2. Does Sizewell have any plans to facilitate/support the availability of public vehicle charging points in the area (constrained by poor electricity supply currently) ?

Pre-Submitted Question: Sibton Parish Council

We understand that you will be bringing in large quantities of aggregates and presumably heavy lifts and large awkward pieces by sea.

This is of course essential to reduce even more congestion on the roads.

Having been employed in the shipping industry it would be interesting to learn what you will construct on an exposed open coastline to safely discharge vessels at site.

Pre-Submitted Question:

Theberton and Eastbridge Parish Council

Q1. There have been multiple observations and complaints from residents regarding the placement of temporary road signage by contractors associated with the Sizewell C (SZC) project. In particular, signage is often positioned in ways that obstruct critical lines of sight at junctions and along roadsides, creating hazardous conditions for all road users.

It is understood that Suffolk County Council (SCC) employees undergo extensive training and follow strict criteria when installing temporary road signage to ensure safety and compliance with regulations. There is growing concern that SZC contractors may not be subject to the same level of training or oversight, and as a result, may be failing to meet necessary safety standards. This poses a serious risk to public safety and requires urgent attention.

Q2. The recent closure of B1122 Abbey Road, by Persimmon, and the Leiston Level Crossing, by SZC, were scheduled to cause maximum disruption by one following the other a day later. Further disruption was caused by the signage about what was closed and when contributed to articulated vehicles and HGV's using Westward Ho to escape the closure as there was no ability to turn round at the level crossing. Can SZC and Persimmon, and any other required closures ensure they are properly coordinated to avoid one following the other and to provide clear signage? One of the issues we are facing now is that there are so many diversion signs for multiple reasons that unless you are local and know your way around, confusion reigns. Having said that even the locals are being caught out by the plethora of diversions and signage.

Pre-Submitted Question: Westleton Parish Council

Q1. We understand that SZC has bought the land which was previously the High Lodge golf course in Hinton in order to accommodate numerous workers. As these workers will not have been included in the SZC projections of traffic through Westleton, can you confirm that no worker housed at High Lodge will be given a parking space on the SZC site and that they will therefore all have to take busses from the Darsham Park and Ride (or from High Lodge) to site? And related: given that SZC must be planning to accommodate large numbers of workers at High Lodge, and given that they may well use local pubs, will you be providing funds to Suffolk Constabulary to enhance neighbourhood policing in the surrounding villages?

Q2. The A12 between Stratford St Andrew and Blythburgh is in effect now one extremely long 30mph speed limit zone. And yet, apart from a few junctions, we struggle to see the safety need. Not only is it making drivers irate, we are also seeing drivers using back roads to avoid the speed limit and the associated congestion which reduces road safety on the surrounding B roads. Please can you reduce the length of the 30mph zones to where they are actually needed for road safety purposes and/or introduce a variable speed limit so 30mph is only applied when needed allowing traffic to flow more freely outside construction hours.

Pre-Submitted Question:

Middleton-cum-Fordley Parish Council

Q1. What SZC identity are contractor HGVs displaying to identify them as being on contract to SZC?

Q2. What is the latest planned date for the activation of the electronic warning sign at the junction of the B1122 and Mill Street, and the permanent 30 reminder roundels on the B1122 from Yoxford to Leiston?

Pre-Submitted Question:

Kelsale-cum-Carlton Parish Council

The residents cannot see safely at the junction of Town Farm Lane to get onto A12 because of the temporary fencing. What is being done about this fence to make it safer for the residents who live in that area to be able to see along the A12 before exiting Town Farm Lane?

Forum Schedule

2025

All forum timings:
18:30 - 20:30 (arrival from 18:00)

Our forums are open to local people to attend as observers – and they're another great way for you to hear about our latest work.

Main Development Site Forum	Wednesday 15 January 2025	Leiston Town Athletic Association
Northern Transport Forum	Wednesday 5 February 2025	Darsham Village Hall
Southern Transport Forum	Wednesday 12 March 2025	Stratford St Andrew Riverside Centre
Community Forum	Thursday 27 March 2025	High Lodge Darsham
Main Development Site Forum	Wednesday 2 April 2025	Leiston Town Athletic Association
Northern Transport Forum	Wednesday 7 May 2025	Darsham Village Hall
Southern Transport Forum	Wednesday 4 June 2025	Stratford St Andrew Riverside Centre
Main Development Site Forum	Wednesday 2 July 2025	Leiston Town Athletic Association
Northern Transport Forum	Wednesday 6 August 2025	Darsham Village Hall
Southern Transport Forum	Wednesday 3 September 2025	Stratford St Andrew Riverside Centre
Main Development Site Forum	Wednesday 8 October 2025	Leiston Town Athletic Association
Community Forum	Thursday 23 October 2025	Sizewell Sports and Social Club
Northern Transport Forum	Wednesday 5 November 2025	Darsham Village Hall
Southern Transport Forum	Wednesday 3 December 2025	Stratford St Andrew Riverside Centre



Thank you

