



Sizewell C Northern Transport Forum

Wednesday 5th November 2025

Darsham Village Hall

Agenda



Item 1: Welcome and Introduction of the Chair and Panel – (Chair)

Item 2: Meeting note and matters arising from Northern Transport Forum 7th May 2025 – (Chair)

Item 3: Corporate and Community Relations – (Marjorie Barnes)

Item 4: Road and Rail Updates – (Spencer Bowdler, David Seal, Stephen Keighley, David Taylor)

Item 5: Traffic and Transport – (Rebecca Quigg)

Item 6: Q&A – via Town and Parish Council Representative – (Chair)

Item 7: Dates of Future Meetings – (Chair)

Item 1: Welcome and Introductions

David Seal	Offsite Delivery Manager
Marjorie Barnes	Head of READ
Richard Bull	Head of Planning
Spencer Bowdler	Site Operations, Site Lead
Richard Knight	Senior Community Relations Manager
Stephen Keighley	Senior Project Manager – Rail
Rebecca Quigg	Transport Co-Ordinator

Specialist Advisors

David Taylor	Network Rail Construction Manager
--------------	-----------------------------------

Advisors

Zoe Botten	Community Relations Manager
Darren Benford-Brown	Community Safety Officer

Item 2: Meeting notes and matters arising from NTF 6th August 2025

Chair

Item 3: Corporate and Community Relations

Marjorie Barnes, Head of READ

Financial Close achieved

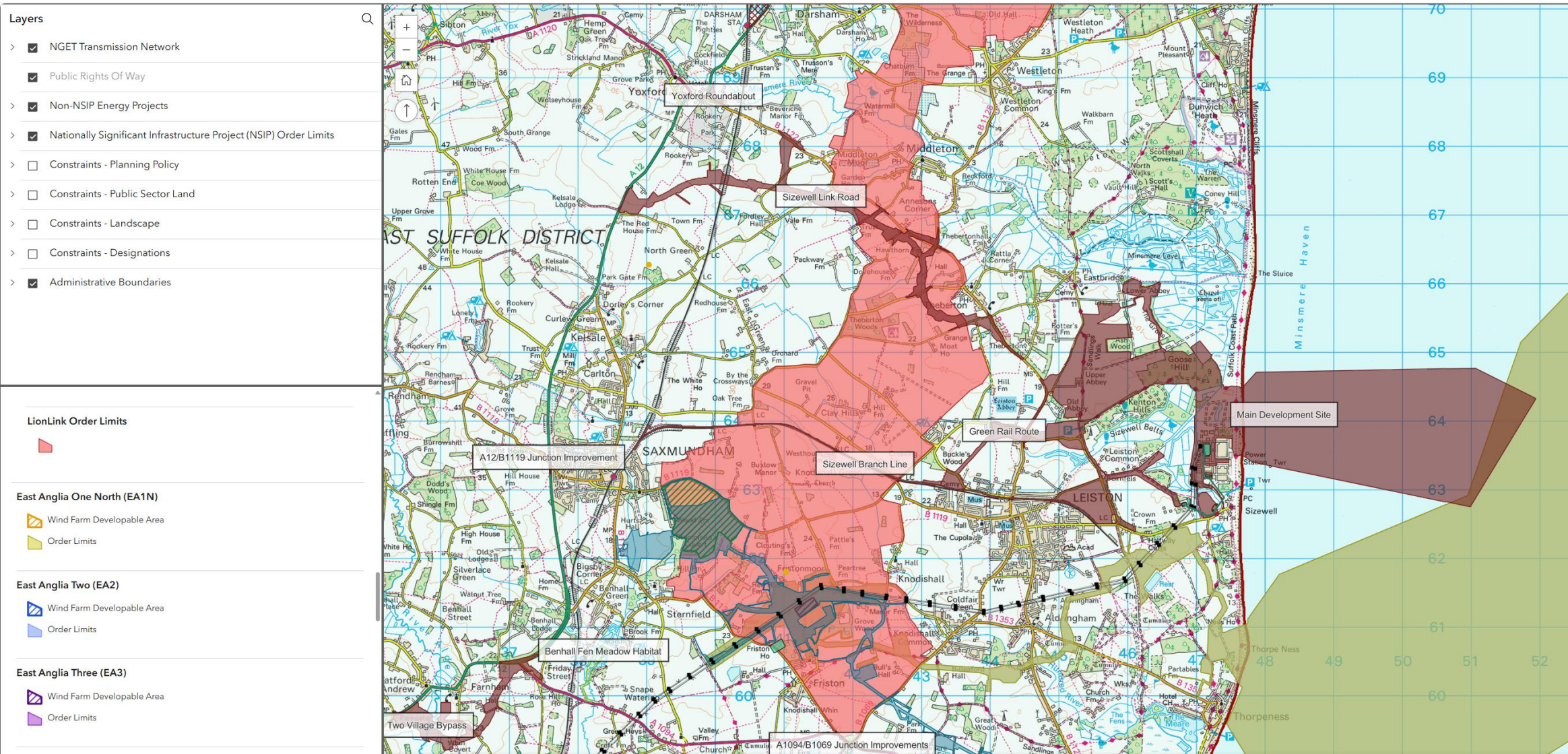
The Natural Environment Improvement Fund (NEIF) - £10m grant scheme has been launched to support environmental enhancement projects.

Annual Sustainability Report published - project on track to create 1,500 apprenticeships and increase local biodiversity by 19%

More than 400 British suppliers have already secured contracts worth £2.8 billion, including £126 million awarded in Suffolk

Local recruitment drive – over 400 people attended Leiston's jobs fair last week
The next Sizewell C careers fair will take place at the Nucleus Employability Hub at East Coast College in Lowestoft on 9 December.

Nationally Significant Infrastructure Projects (NCIP's)



COMMUNITY RELATIONS TEAM

The Sizewell C Community Relations Team is based in Leiston and dedicated to keeping local people informed, listened to, and supported throughout the project's construction. The team works closely with residents, parish councils, local businesses, and community organisations to share accurate information, respond promptly to questions or concerns, and minimise disruption wherever possible.

GET IN TOUCH

Call us, email us, message us, write to us, or simply call in and speak to us, we'd love to hear from you:

📍 Sizewell C Information Office, 48-50 High Street,
Leiston IP16 4EW

☎️ FREEPHONE 0800 197 6102*

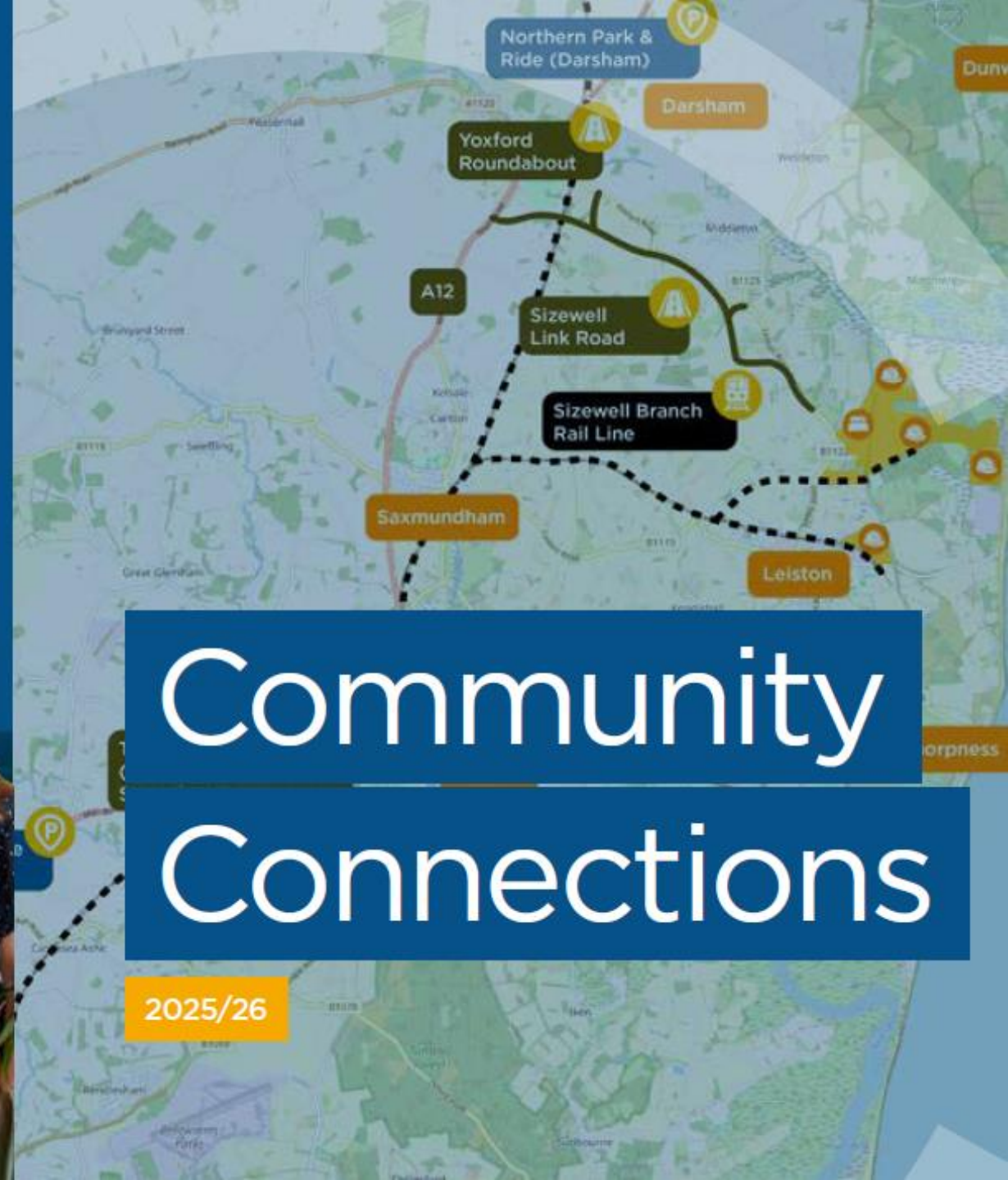
💻 www.sizewellc.com

✉️ @sizewellc

📄 szcworkstracker.co.uk

✉️ info@sizewellc.com

Sizewell C
COMMUNITY TEAM



Community Connections

2025/26

- Weekly road works bulletin
- 6 Project newsletters
- 12 Community construction mailers
- 6 Town and Village newsletters
- SMS and subscription service
- Online Works Tracker
- Information office
- Community radio

PROJECT UPDATE

MARCH 2025

There has been good progress on the Sizewell C project in the first month of 2025.

We are also pleased to announce the launch of the new Sizewell C online works tracker. The navigation has been improved and you can now sign up for email updates each time the works tracker is updated. We will be extending this to an SMS service later in the year. You can also check traffic management on the Suffolk County Council website Causeway one.network.

We are continuing to remove vegetation where necessary, which is overseen by an ecological clerk of work to ensure we avoid harm to wildlife.

As we conduct our clearance work during this period you may notice a lot of activity around our associated developments, particularly along the A12.

We have begun to implement the long term and necessary road closures that host our infrastructure projects. Notably, Willow Marsh Lane (A12 junction in Darsham) and Abbey Lane (Leiston) with diversions in place which you can find further details of on our works tracker.

As the designs and contractors are being agreed, we are beginning to firm up key dates of activity. Over the next month you will see enabling works to create the Yoxford roundabout which will improve safety at a busy junction, with works commencing in March.

We have also made further progress on the park and ride sites that will provide buses for workers to access site, reducing the number of vehicles on local roads.

Rail works also continue at pace and we have had several deliveries of rail track ahead of track laying. This will allow the first trains to move down the Leiston branch line to bring materials to our site on Buckleswood Road.

FORUM SCHEDULE

Southern Transport Forum	Wednesday 12 March 2025	Stratford St Andrew Riverside Centre
Community Forum	Thursday 27 March 2025	High Lodge, Darsham
Main Development Site Forum	Wednesday 2 April 2025	Leiston Town Athletic Association
Northern Transport Forum	Wednesday 7 May 2025	Darsham Village Hall

All forum timings 18:30 - 20:30 (Arrival from 18:00)

For more information and for all 2025 forum dates visit sizewellc.com/community/forums

VISIT THE WORKS TRACKER SITE







- £23m over 10 years for East Suffolk projects
- The latest awards take the total distributed since the fund was launched just over a year ago to around £3m
- Supports social, economic & environmental wellbeing
- Small grants up to £10k/year; larger multi-year grants available
- Communities closest to Sizewell C areas of work
- Apply via Suffolk Community Foundation: www.suffolkcf.org.uk
- Next round:
 - Opens: 20 Oct 2025
 - Closes: 4 Jan 2026 (23:59)
 - Decisions: Early April 2026
- Following round closes: 29 Mar 2026
- Allow 12 weeks after closing for decisions

Drop in and see Sarah and James at Leiston Library on Tuesday 18th November between 09:30-12:30 to have any questions about the Fund answered and discuss your project ideas - no appointment necessary

Financial close has been achieved

Project activity will ramp up

Please encourage communities to stay tuned to the various channels of communication for updates

Please encourage your communities to work with Suffolk Community Foundation to explore community funding

Moving forward we will cease this update in the transport and main development site forums to allow the full meeting to be dedicated to construction updates

We will continue to deliver updates at the full community forum meetings

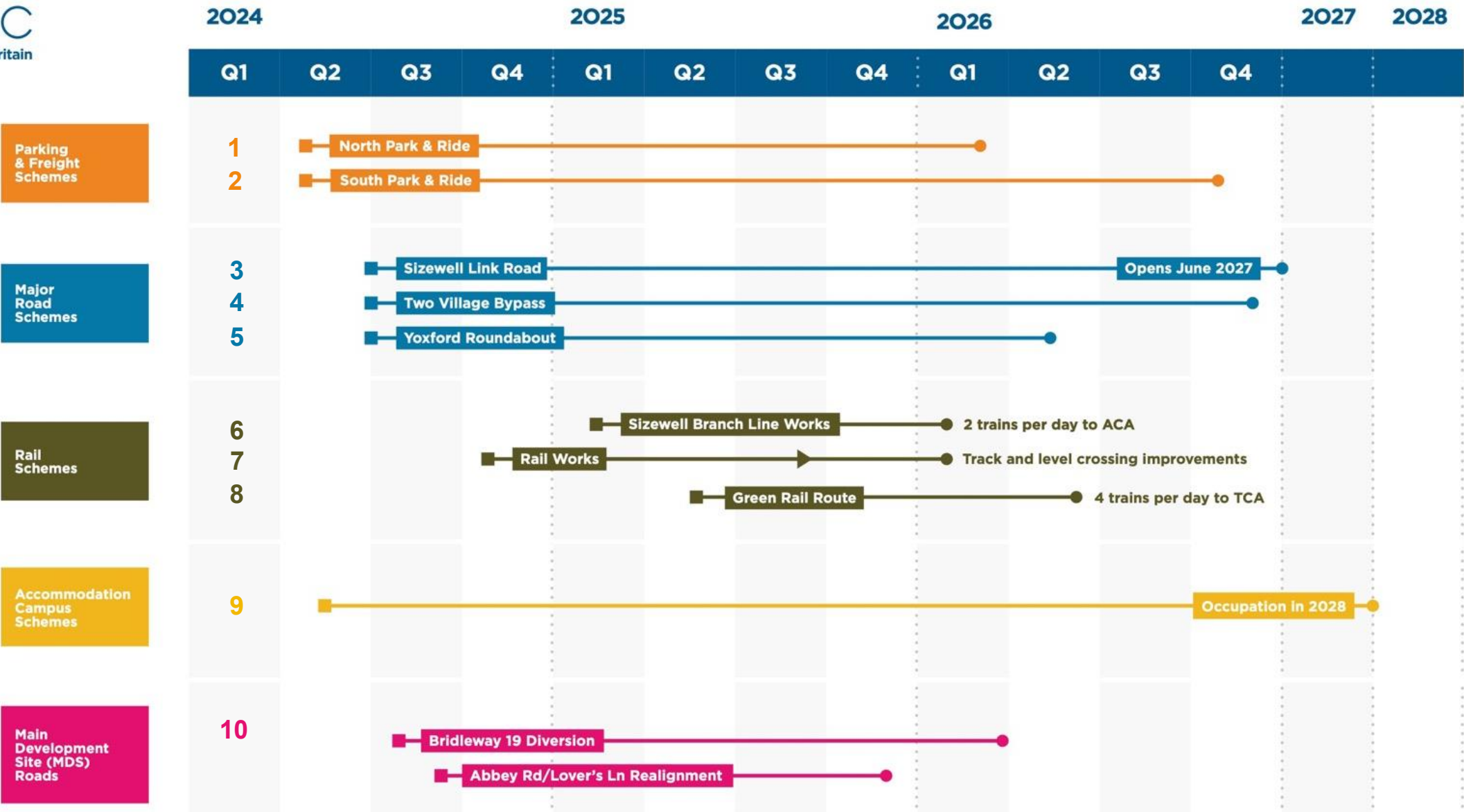
Please reach out to Richard and Zoe if you have any feedback

Item 4: Road and Rail Update

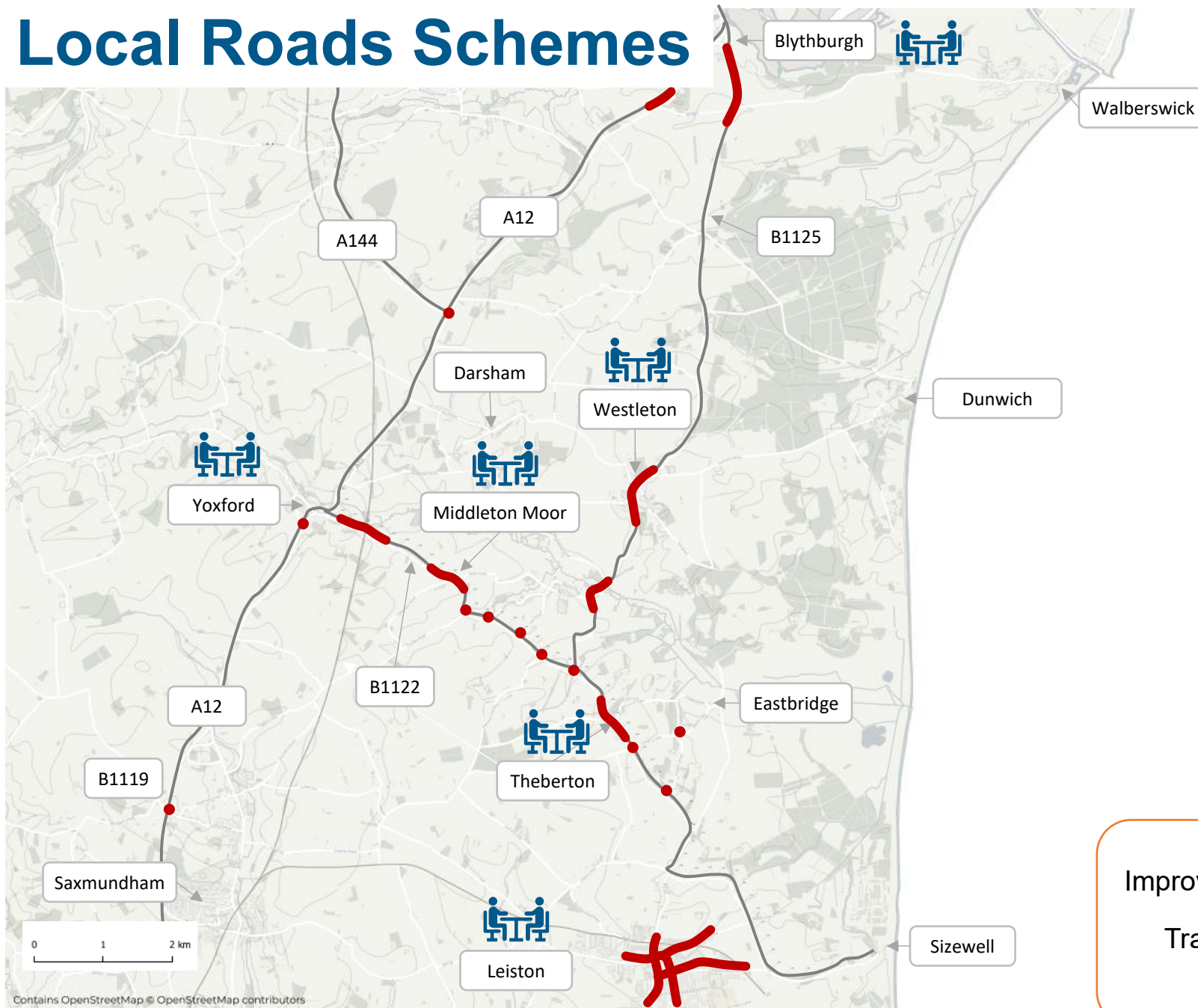
David Seal, Spencer Bowdler, Stephen Keighley and David Talor (Network Rail)

Site Delivery Lookahead

Off Site
Infrastructure
Plan on a Page



Local Roads Schemes



Typical improvements

- New and enhanced pedestrian footways and crossings
- New road surfacing
- Village gateways
- Safety improvements and side road visibility


Improvement scheme



Transport Working
Group




Local Roads – Commencement Dates

- B1122/B1125 Average speed cameras
- County Wide Highways Signage (Phase 2) including B1122 30mph
- A12 Abnormal Indivisible Load (AIL) Layby near B1078
-  • **B1122 Early Years Scheme (Theberton)**

-  • B1122 Early Years Scheme main scheme
-  • **A12 Yoxford**
- B1125 Blythburgh
- **A12 Marlesford**
- B1125 Westleton (Follows completion of B1125 Blythburgh)

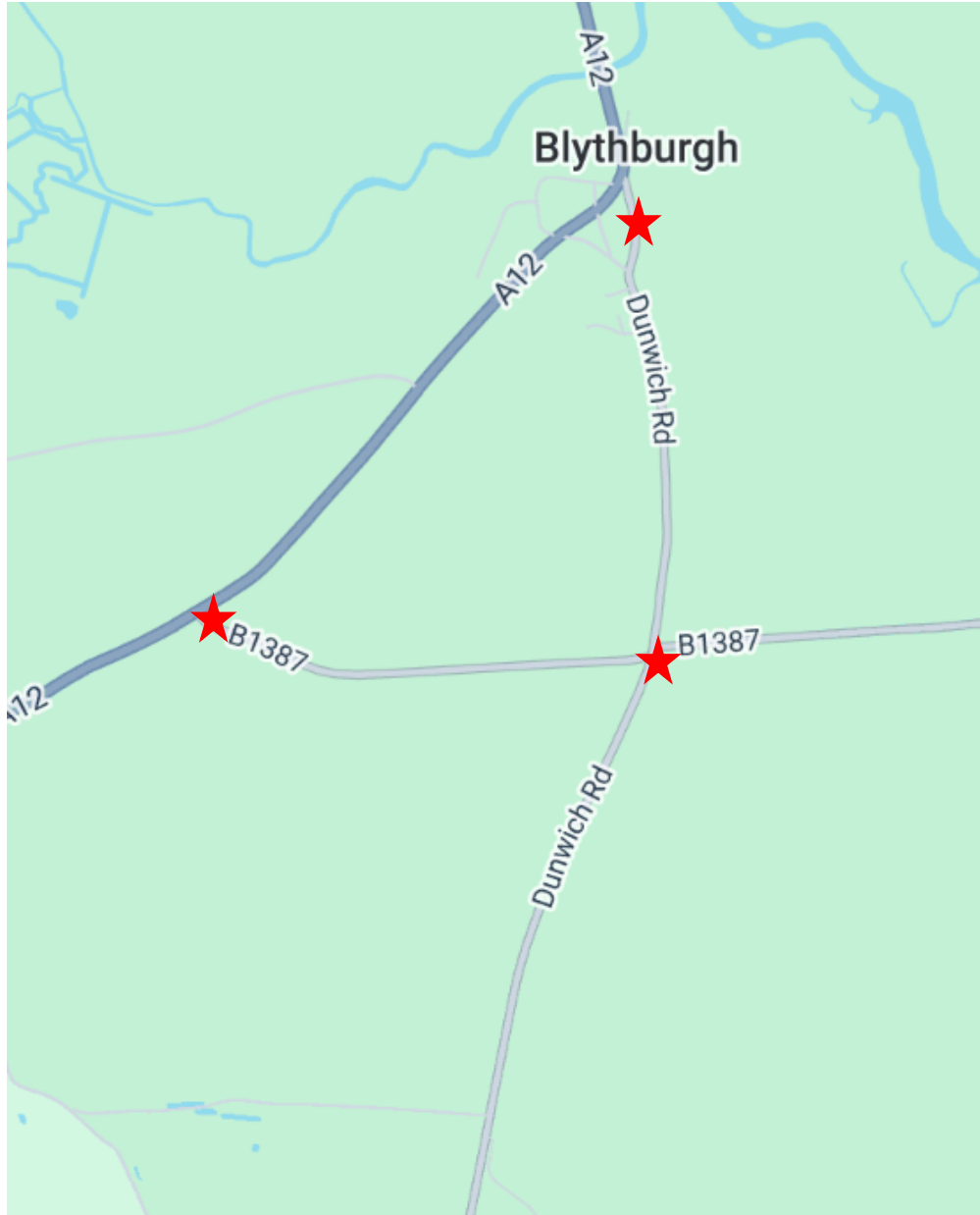


Appointment of AD2 Local roads Delivery Principal Contractor:
M Group Highways

-  • B1122 Early Years Scheme (VAS Signs)
- B1078 Road Safety Improvements
- **A1094 / B1069 Junction south of Knodishall**
- B1125 Blythburgh - B1387 improvements in collaboration with SCC
- A12 Yoxford Crossing (Trial holes)

Collaboration with Scottish Power Renewables - 

Blythburgh: B1125 Scheme and B1387 works



Progress

- Q1 2026 works to commence on SZC Blythburgh mitigation – closing Angel Lane
- Ensure the works are consistent with B1387 improvements
- Sizewell C funding the improvements and maintenance of B1387

B1387 Works 15th – 19th December 2025

- Siding out of verge
- Patch and repair carriageway defects
- Drainage improvements
- SZC to fund design and construction works

SZC mitigation scheme including improvements to A12/B1387 junction.

- To follow B1387 Walberswick Road improvements by SCC.
- Anticipate construction mid-late Q1 2026

Yoxford Roundabout



Yoxford Roundabout

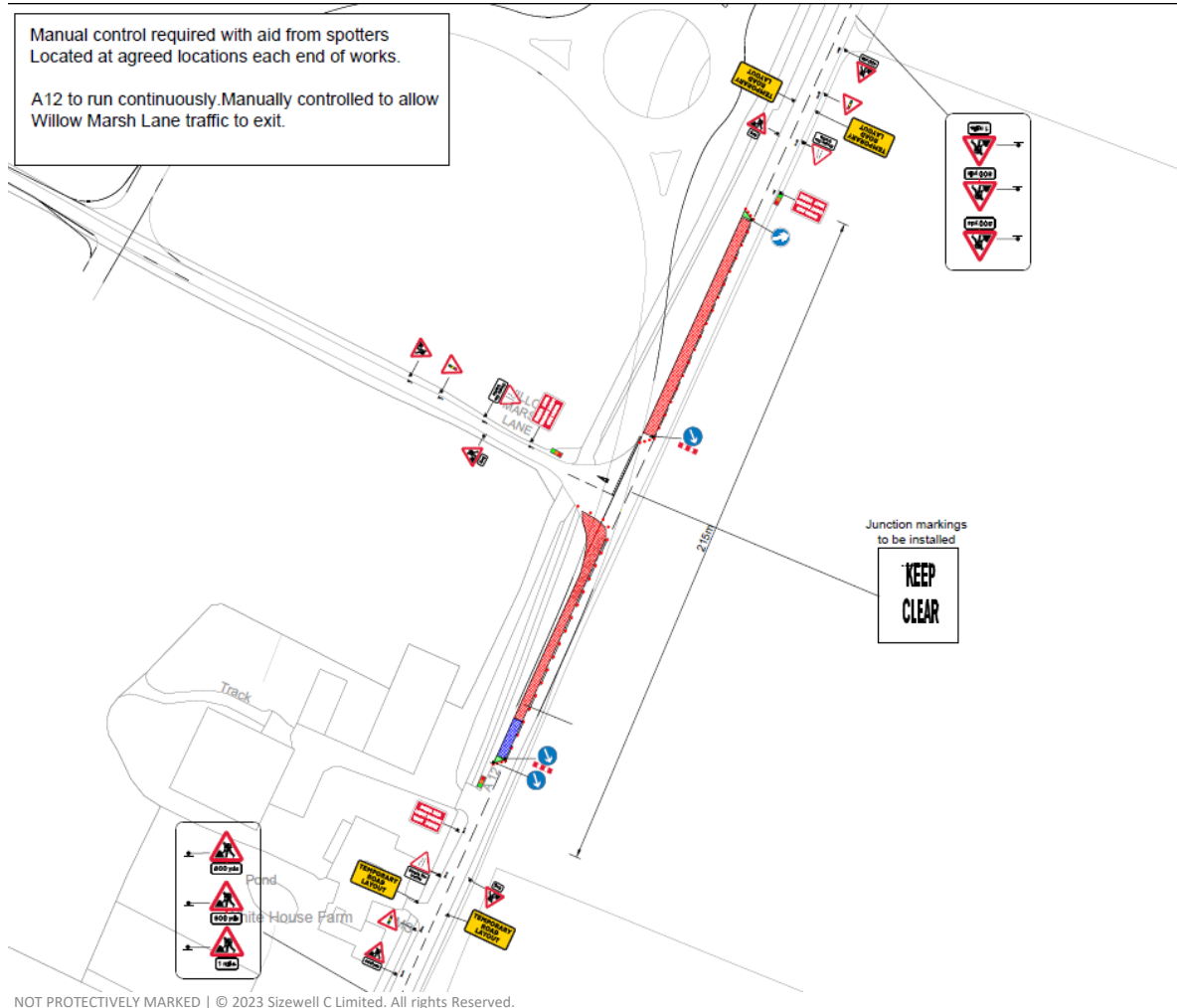


- Detail design and technical approval complete.
- Archaeology complete
- Vegetation & ecology clearance complete
- Utility works ongoing
- Construction Contract awarded to Breheny CE
- Open Spring 2027

Northern Park and Ride



Northern Park and Ride (NPR) A12 roundabout construction phasing



Phase 1A - Southern Arm, Northbound on the A12 now to mid-Nov (includes Phase 1A + B)

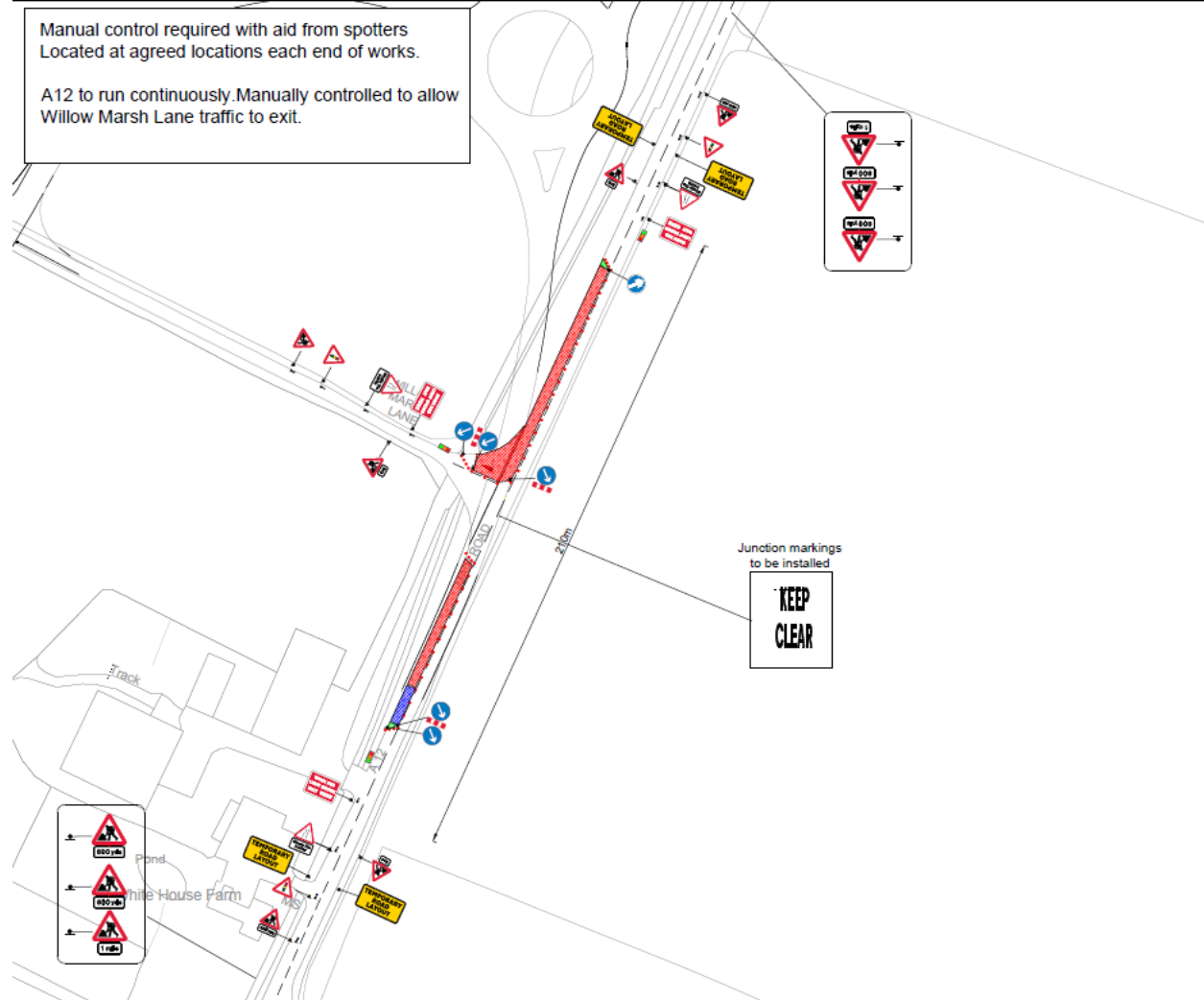
Traffic lights

Construction works to Willow Marsh Lane

Controlled access for partial operation

Northern Park and Ride (NPR)

A12 roundabout construction phasing



**Phase 1B - Southern Arm, Northbound on the
A12 now to mid-Nov (includes Phase 1A + B)**

Traffic lights

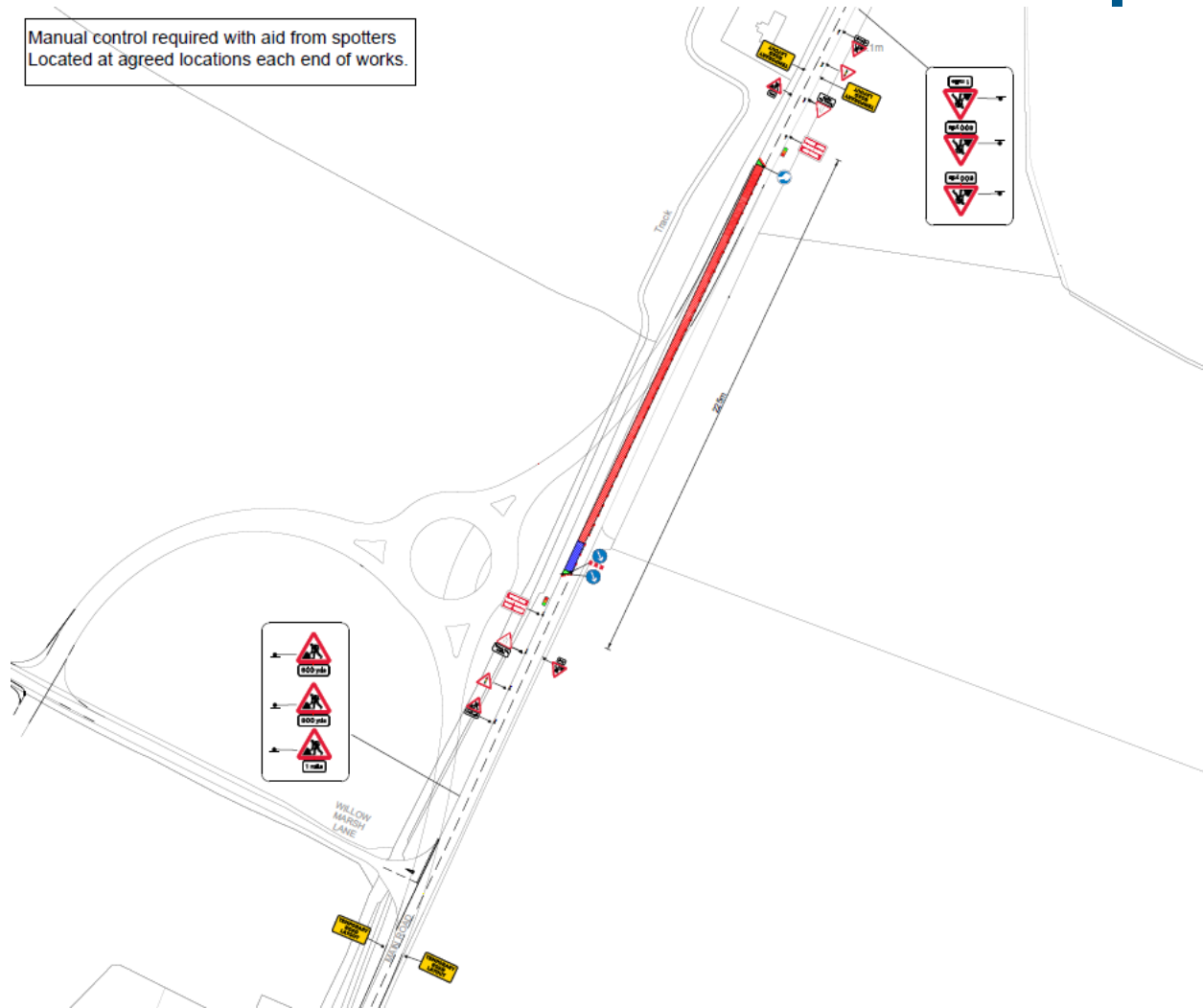
Construction works to Willow Marsh Lane

Controlled access for partial operation

Northern Park and Ride (NPR)

A12 roundabout construction phasing

Manual control required with aid from spotters
Located at agreed locations each end of works.



**Phase 2- Northern Arm, Northbound on the A12 -
-mid-Nov to early Dec.**

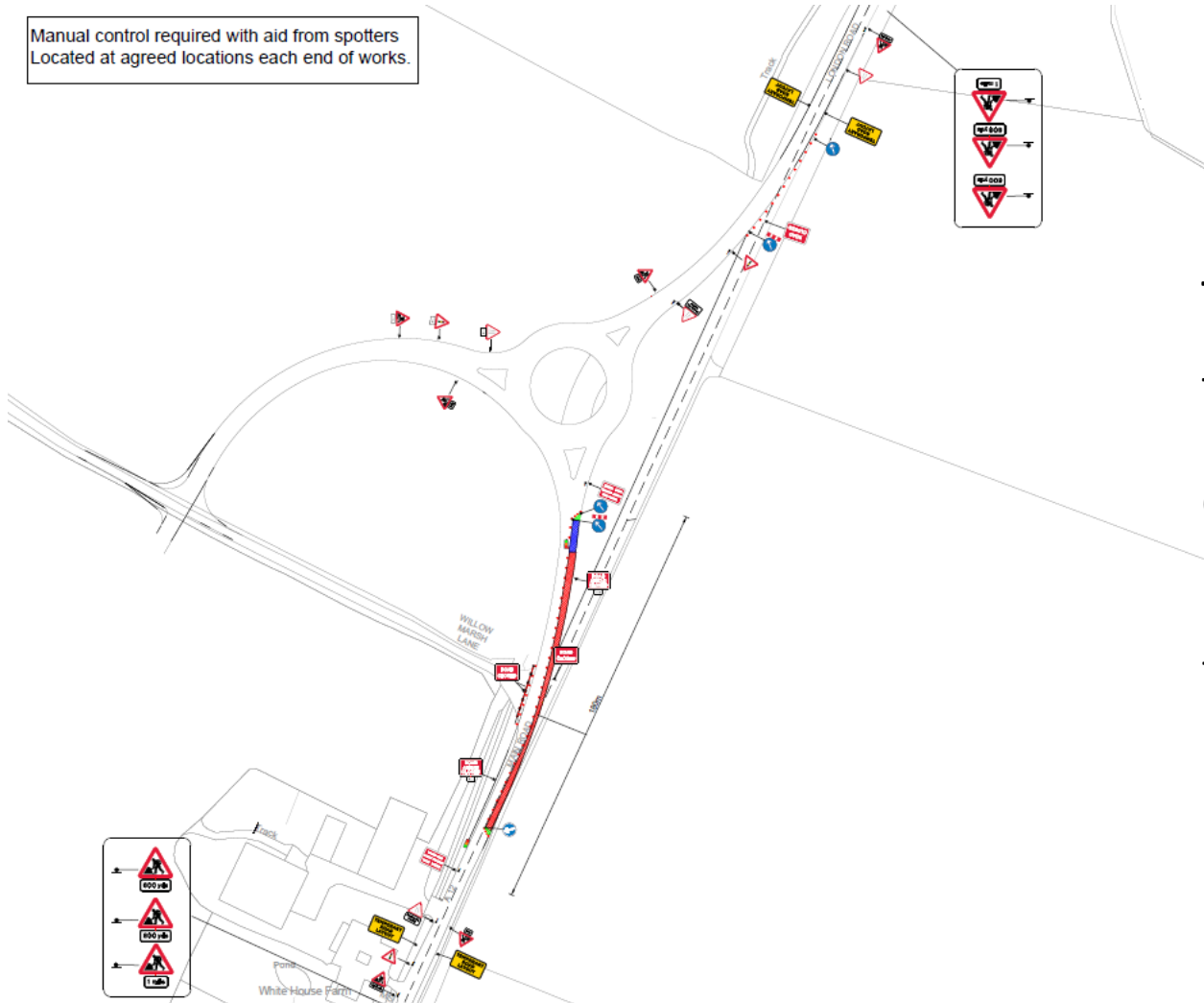
Traffic lights

Construction works to northern arm

Access for partial operation via Willow Marsh Lane

Northern Park and Ride (NPR) A12 roundabout construction phasing

Manual control required with aid from spotters
Located at agreed locations each end of works.



**Phase 3 - Southern Arm, Southbound on the A12
– early-Dec to mid-Dec**

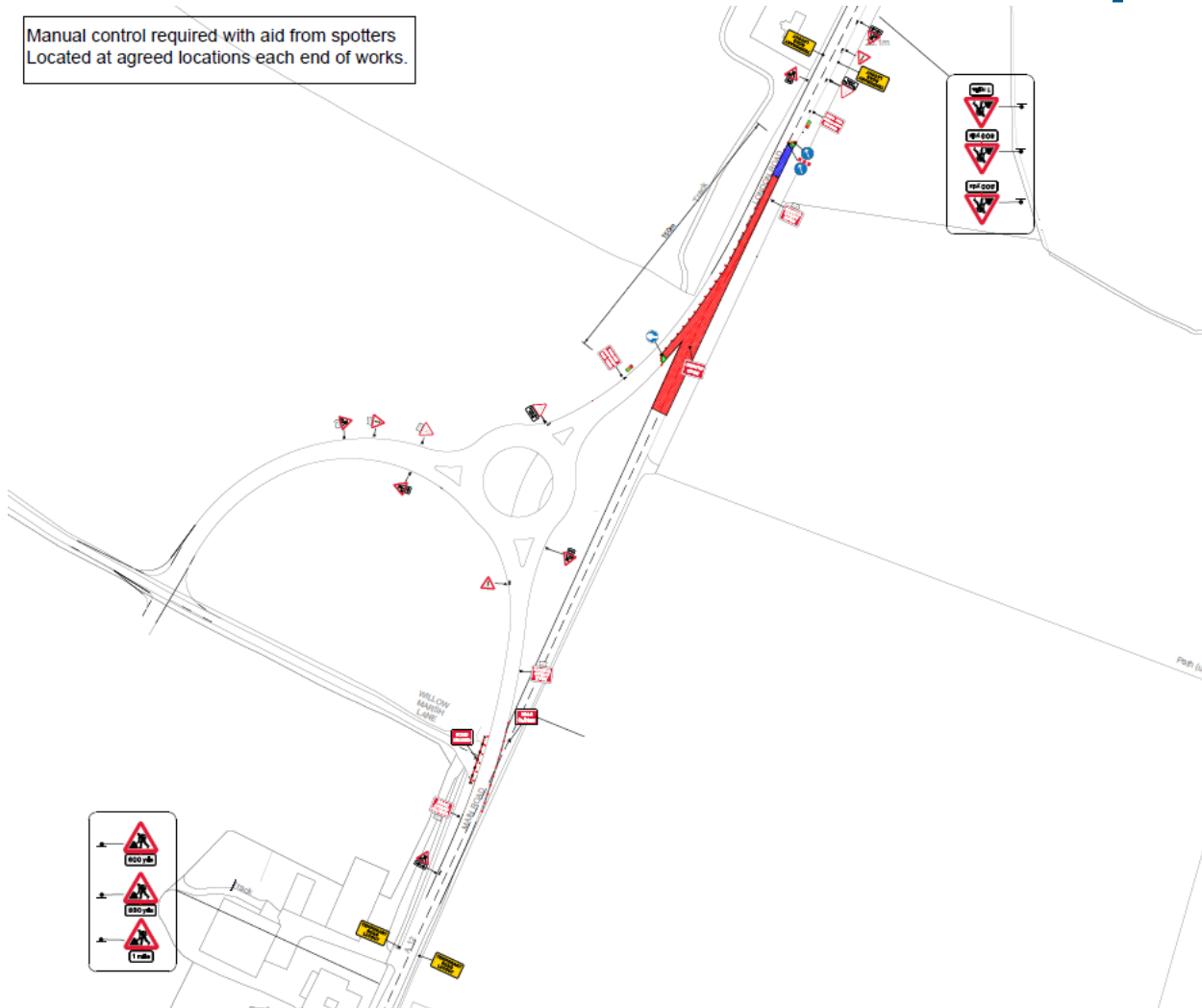
Traffic lights

Construction works to southern arm.

Partial operation accessed via the western arm of
the roundabout.

Northern Park and Ride (NPR) A12 roundabout construction phasing

Manual control required with aid from spotters
Located at agreed locations each end of works.



**Phase 4 - Northern Arm Southbound on the A12 –
mid-Dec to mid-Jan**

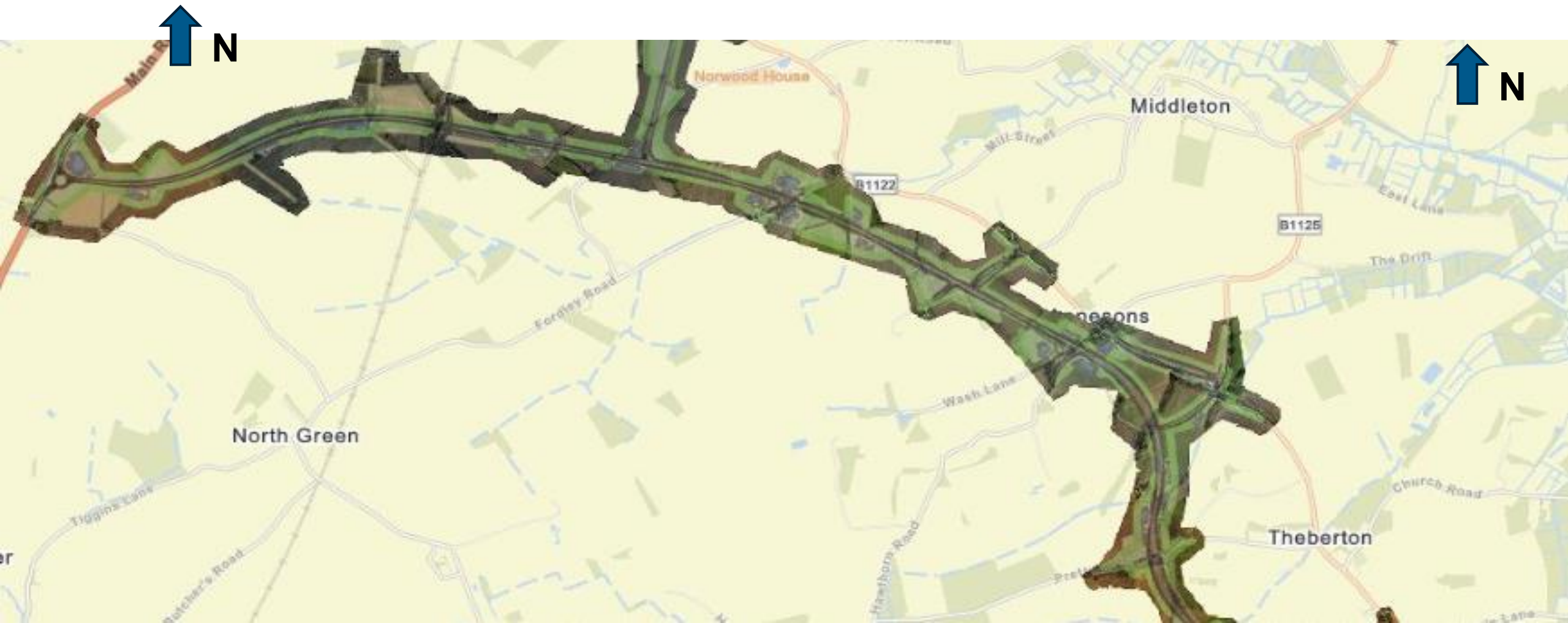
(off network for embargo / Christmas shutdown)

Traffic lights

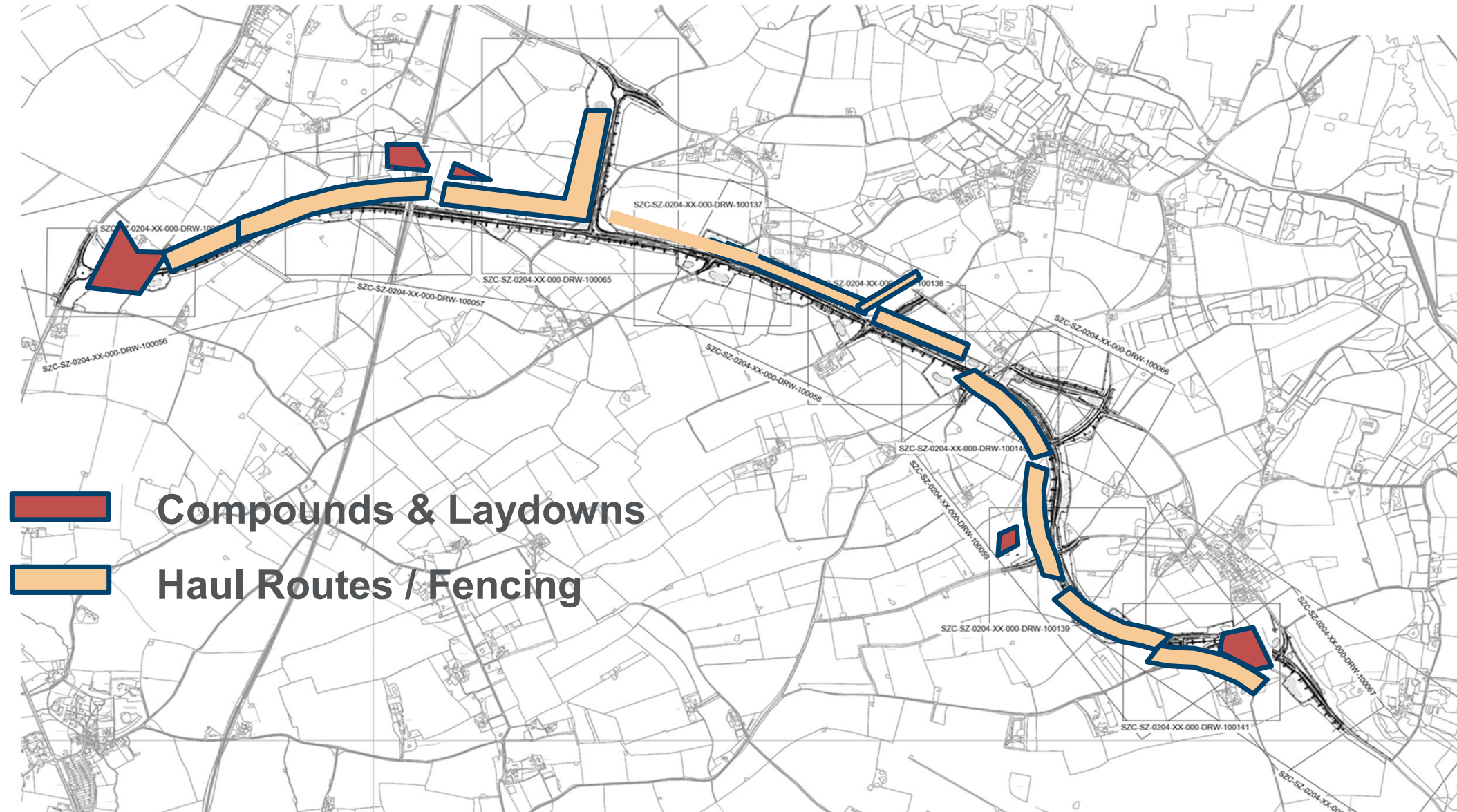
Construction works to northern arm.

Partial operation accessed via the western arm of
the roundabout.

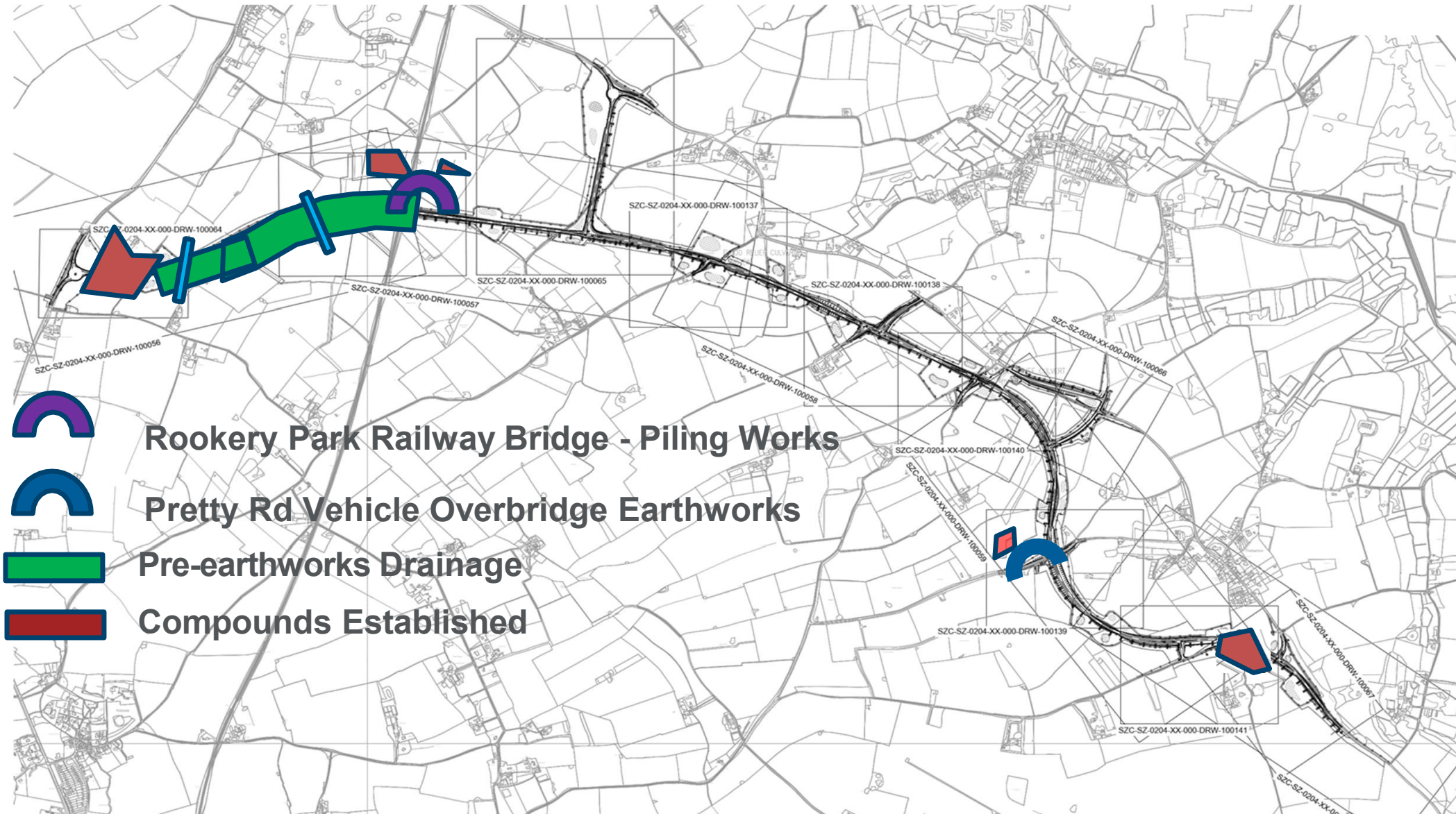
Sizewell Link Road

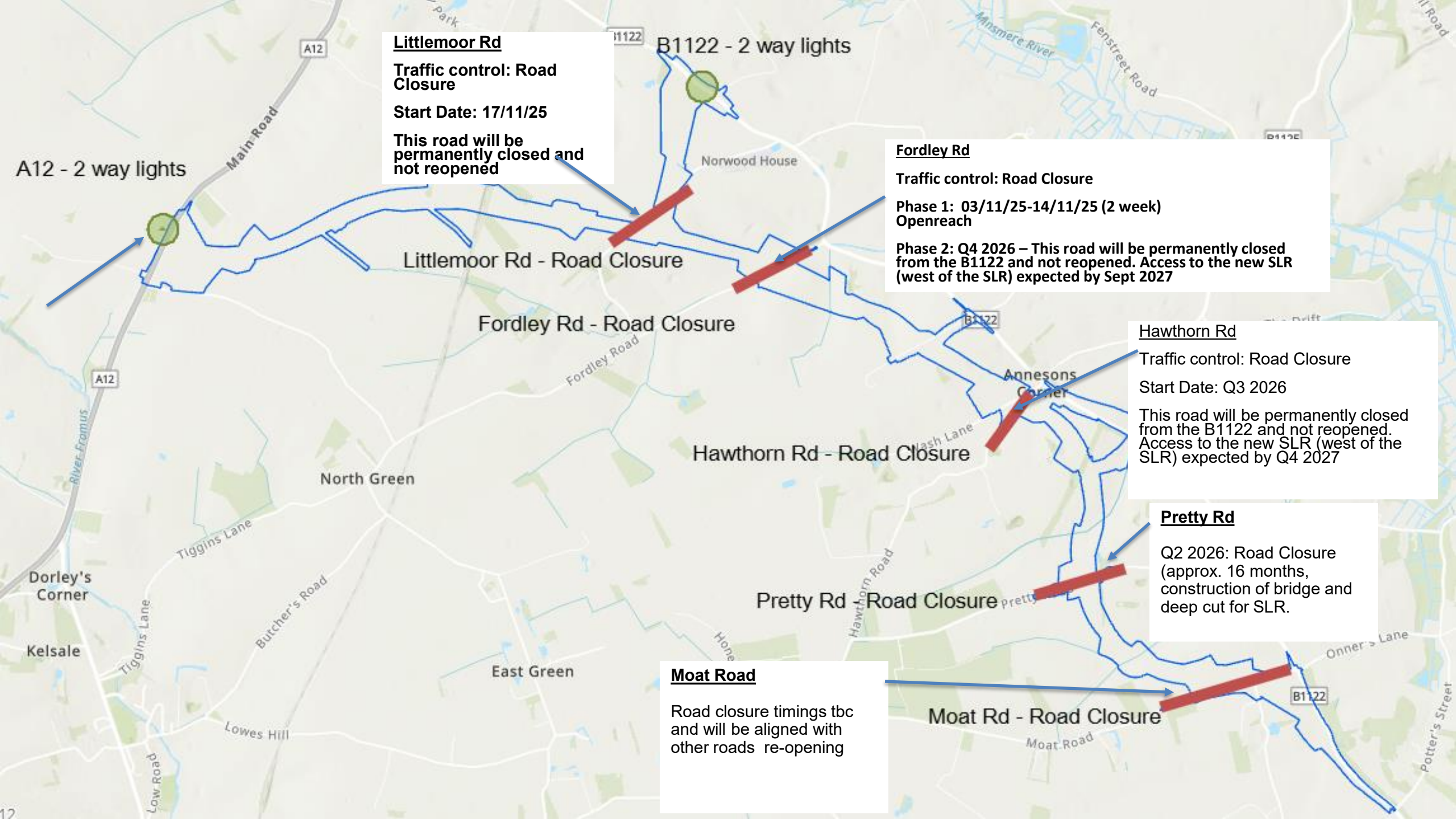


SLR –Sequence Phase 1 (Aug – Nov 2025)



SLR – Sequence Phase 2 (Dec – May 2026)





Littlemoor Rd

Traffic control: Road Closure

Start Date: 17/11/25

This road will be permanently closed and not reopened

B1122 - 2 way lights

Fordley Rd

Traffic control: Road Closure

Phase 1: 03/11/25-14/11/25 (2 week) Openreach

Phase 2: Q4 2026 – This road will be permanently closed from the B1122 and not reopened. Access to the new SLR (west of the SLR) expected by Sept 2027

Hawthorn Rd

Traffic control: Road Closure

Start Date: Q3 2026

This road will be permanently closed from the B1122 and not reopened. Access to the new SLR (west of the SLR) expected by Q4 2027

Pretty Rd

Q2 2026: Road Closure (approx. 16 months, construction of bridge and deep cut for SLR.

Moat Road

Road closure timings tbc and will be aligned with other roads re-opening

A12 - 2 way lights

Littlemoor Rd - Road Closure

Fordley Rd - Road Closure

Hawthorn Rd - Road Closure

Pretty Rd - Road Closure

Moat Rd - Road Closure

Road Closures – Rail and Road (Q4-)

Date	Location	Daytime / Night time closure	Works
Ongoing to January 2027	Abbey Lane	Full closure	Green rail route and MDS Roads.
Ongoing to early 2026	Willow Marsh Lane	Full closure	Northern Park and Ride
3 Nov to 8 Nov	A12 / A1094 Friday Street	Nighttime	Friday Street roundabout
3 Nov to 14 Nov	Fordley Road	Full closure	Sizewell Link Road openreach Diversion
3 Nov to 20 Dec	Lover's Lane	Nighttime	132 KV Cable
From 17 Nov	Littlemoor Road	Full closure	Sizewell Link Road
17 Nov to 31 Jan	Buckleswood Road	Full closure	Green Rail Route
5 Dec to 8 Dec	A12 North	Full closure	Yoxford roundabout
8 Dec to 11 Dec (TBC)	B1122 Middleton Road	Nighttime	ESW at Yoxford roundabout
12 Dec to 15 Dec (TBC)	B1122 Abbey Road and Lover's Lane	Full closure	Main Development Site and Green Rail Route
15 Dec to 18 Dec (TBC)	B1122 Middleton Road	Nighttime	ESW at Yoxford roundabout
19 Dec to 22 Dec (TBC)	B1122 Abbey Road and Lover's Lane	Full closure	Main Development Site and Green Rail Route

Variable Messaging Signs (VMS)



Site 1: A1094 east of B1069 Church Road

<https://w3w.co/mandolin.waltz.during>

Site 2: A12 Lowestoft

<https://w3w.co/flexed.amicably.feasts>

Site 3: A12 south of A144 Junction

<https://w3w.co/hiked.pushes.siblings>

Site 4: A12 Wickham Market Bypass

<https://w3w.co/heavy.flown.twee>

Site 5: A12 Woodbridge Bypass

<https://w3w.co/sway.driver.rooting>

Sizewell is implementing VMS signs to give driver's advanced warning of closures and highway works. We are coordinating with SCC on appropriate messaging.

Rail Update

Stephen Keighley

Rail Delivery - Branchline Track

High output New Track Construction Machine (NTC)

- 3.7km new track installed along branchline (west end of route)



Ballast unloading



Tamping



Leiston West Junction



Rail Delivery – ACA works



Construction of ACA Sidings commenced

- Ballast laying 75% complete
- Track installation commenced



Rail Delivery – Plan for GRR / TCA Track Delivery



	Where	When (track)	How (track)
1	GRR South	Nov 25	Loose lay
2	GRR North	Dec 25 - Feb 26	NTC
3	Abbey Rd – Bridleway 19	Jan - Feb 26	NTC
4	TCA West	Nov 25 – Feb 26	Loose Lay
5	TCA East	Nov 25 – Dec 25	Loose Lay

Rail Delivery – TCA & GRR Mobilisation

TCA Sidings:

- Main rail compound established
- Deliveries of ballast & track commenced



Green Rail Route:

- Deliveries of ballast, sleepers & track commenced



Rail Delivery – Buckleswood Rd Level Crossing

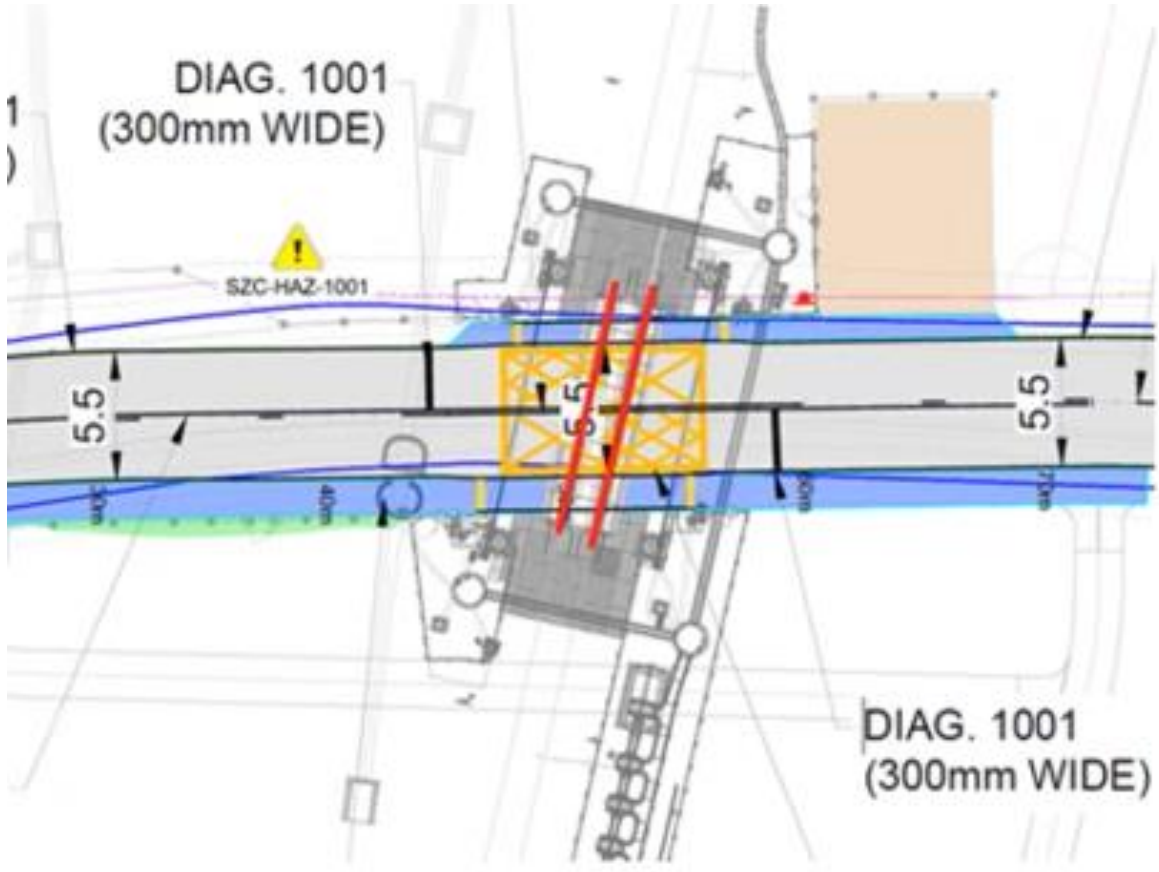
Plan for delivery of Buckleswood Road level crossing:

2 stages of delivery:

	What	Who	When
1	Drainage works	SZC	17 – 21 Nov
2	Level crossing construction including road widening	BBR	22 Nov – 31 Jan 26

During Stage 1&2:

- Westward Ho open to allow access to Abbey Road



Rail Delivery – Leiston Level Crossing

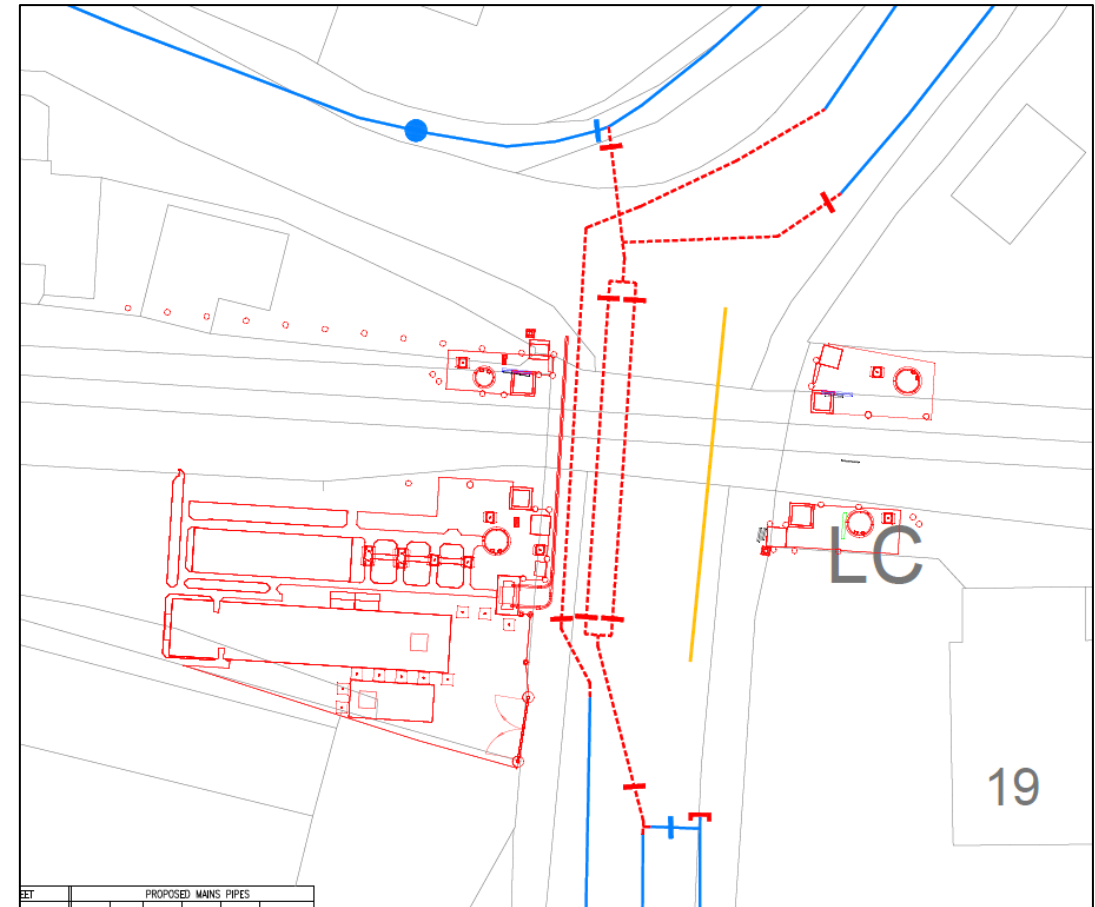
Plan for delivery of Leiston level crossing being developed

(part of overall plan for level crossing upgrades being finalised)

	What	Who	When
1	Power sleeve	SZC / BBR	18 – 28 Nov
2	Power installation	UKPN	Dec – Jan 26
3	Water pipe installation	E&SW	Apr – May 26
4	Gas diversion	Cadent	May – Jul 26
5	Track & Civil Engineering	SZC / BBR	Q3 26
6	Signalling	SZC / NR	Q4 26

During Stage 1:

- Westward Ho & level crossing lane restriction only
- Pedestrian access maintained throughout



Rail Delivery - Plan on a page

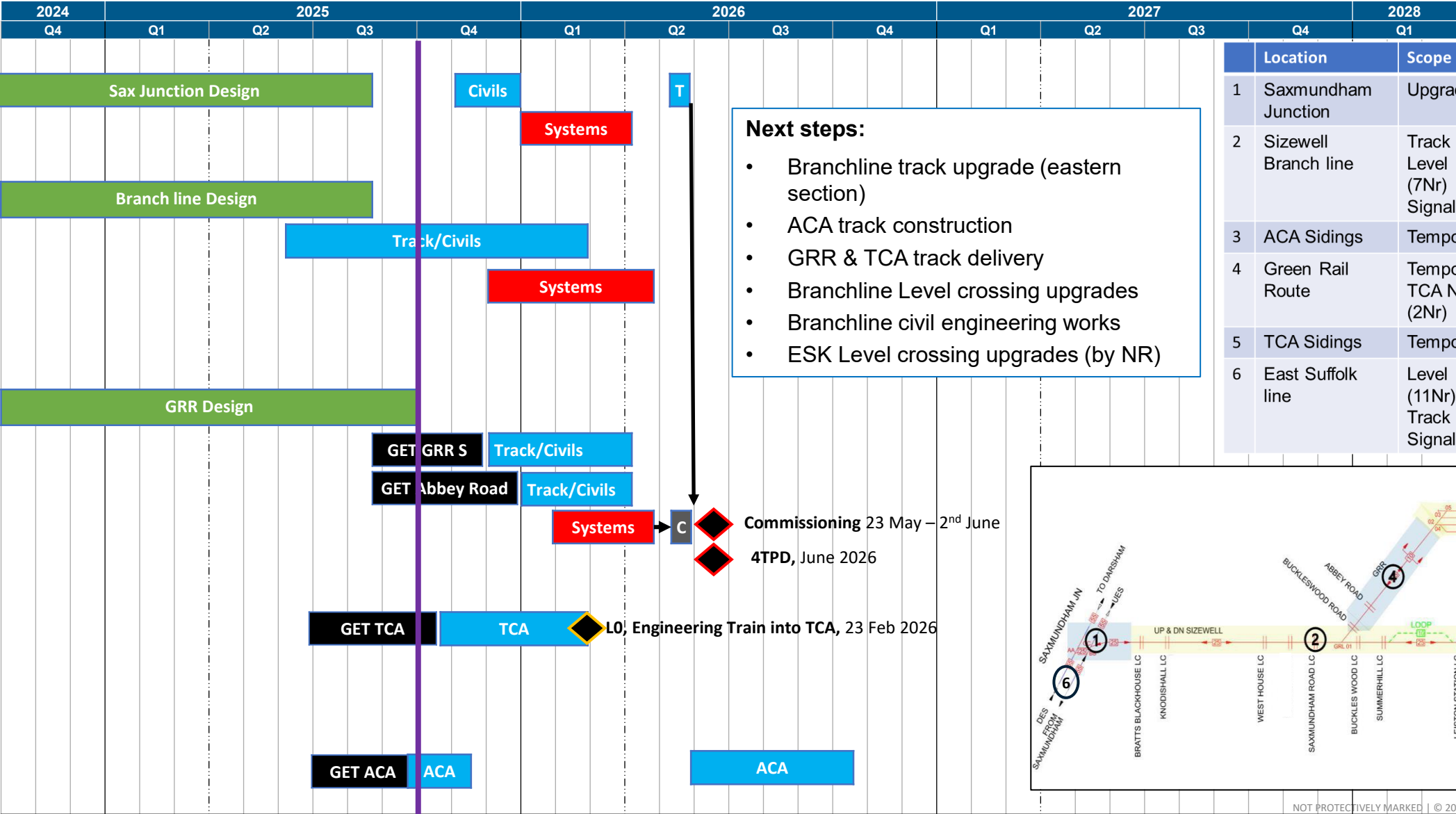
1. Sax Jct

2. Branch Line

4. GRR

5. TCA

3. ACA

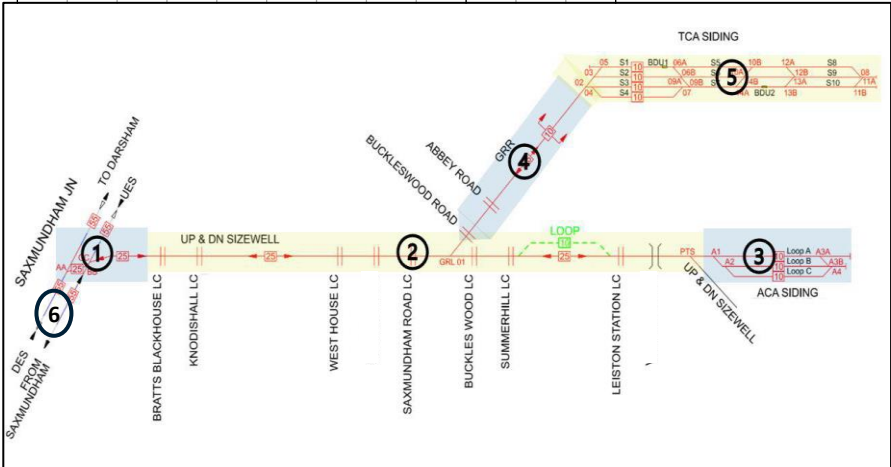


Next steps:

- Branchline track upgrade (eastern section)
- ACA track construction
- GRR & TCA track delivery
- Branchline Level crossing upgrades
- Branchline civil engineering works
- ESK Level crossing upgrades (by NR)

Commissioning 23 May – 2nd June
4TPD, June 2026

	Location	Scope
1	Saxmundham Junction	Upgrade existing junction
2	Sizewell Branch line	Track upgrade Level crossing upgrade (7Nr) Signalling upgrade
3	ACA Sidings	Temporary sidings (3Nr)
4	Green Rail Route	Temporary connection to TCA New level crossings (2Nr)
5	TCA Sidings	Temporary sidings (8Nr)
6	East Suffolk line	Level Crossing upgrades (11Nr) Track upgrades Signalling upgrade



Northern Transport Forum



Darsham Level Crossing



Darsham Level Crossing

Network Rail are continuing to progress single option design to upgrade the existing infrastructure to a full barrier level crossing with obstacle detection (OD Mk2).

All current surveys have now been completed on schedule

In the coming weeks the project will begin reviewing the proposed access strategy for delivery of the upgrade works and assessing any requirements for road closures. Once we have confidence in proposal we will look to consult with SCC and local authorities for support/input.

Network Rail continue to work closely with the Sizewell Park & Ride team and have already collaborated on a number of road closures to reduce disruption in the local area.

The project is still on target for commissioning Spring 2027.



East Suffolk line renewal 9-day closure



Saturday 25 October to Sunday 2 November 2025

We have replaced old jointed track (rail, sleepers and ballast) with continuously welded rail which:

- **Provides a smoother journey for passengers**
- **Reduces noise from the railway**
- **Reduces the need for frequent maintenance, rail closures and speed restrictions which add delays to journeys**
- **Allows heavier freight services to operate**

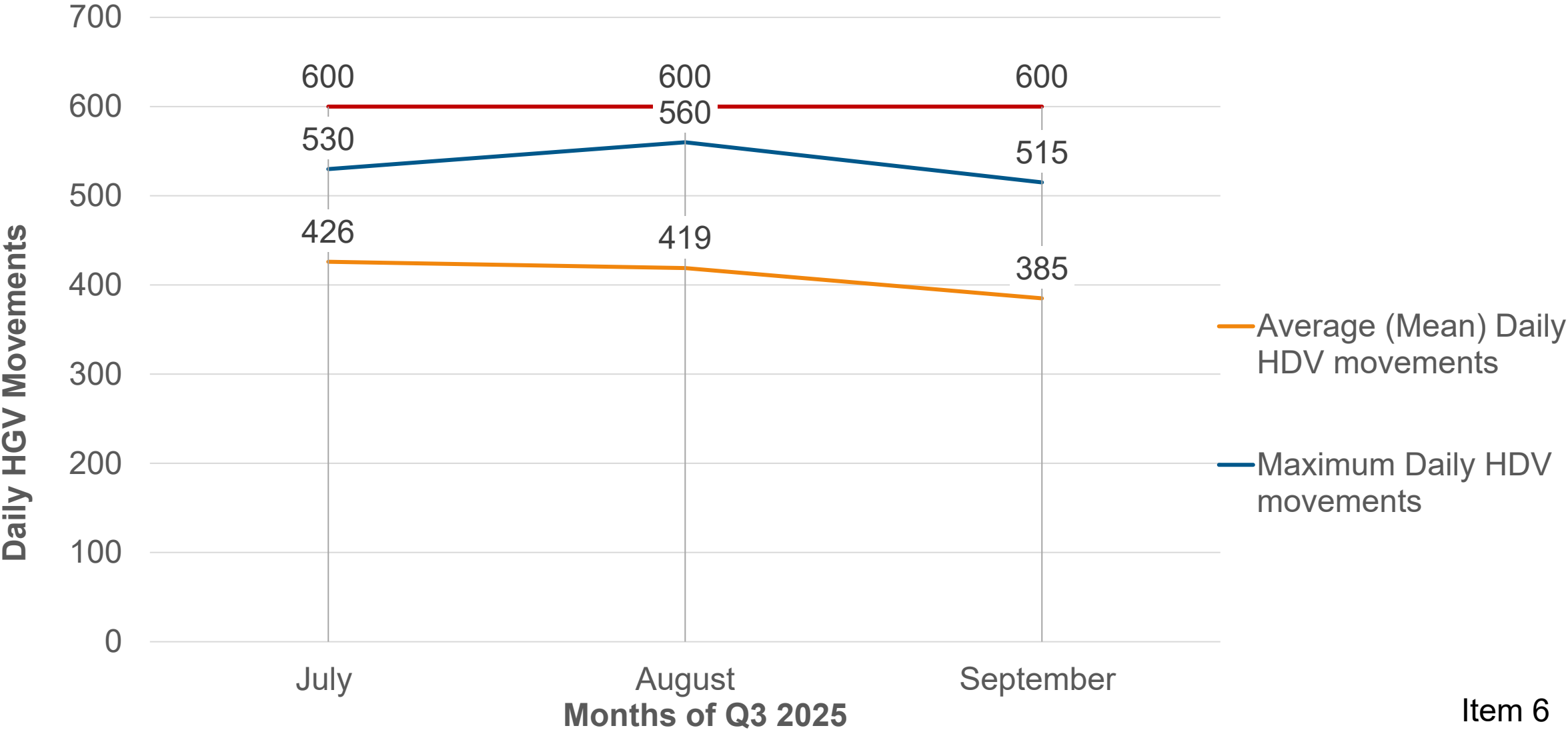
Rail replacement buses operated between Ipswich and Halesworth while engineering work was carried out.

Item 5: Traffic and Transport

Rebecca Quigg, Transport Co-ordinator

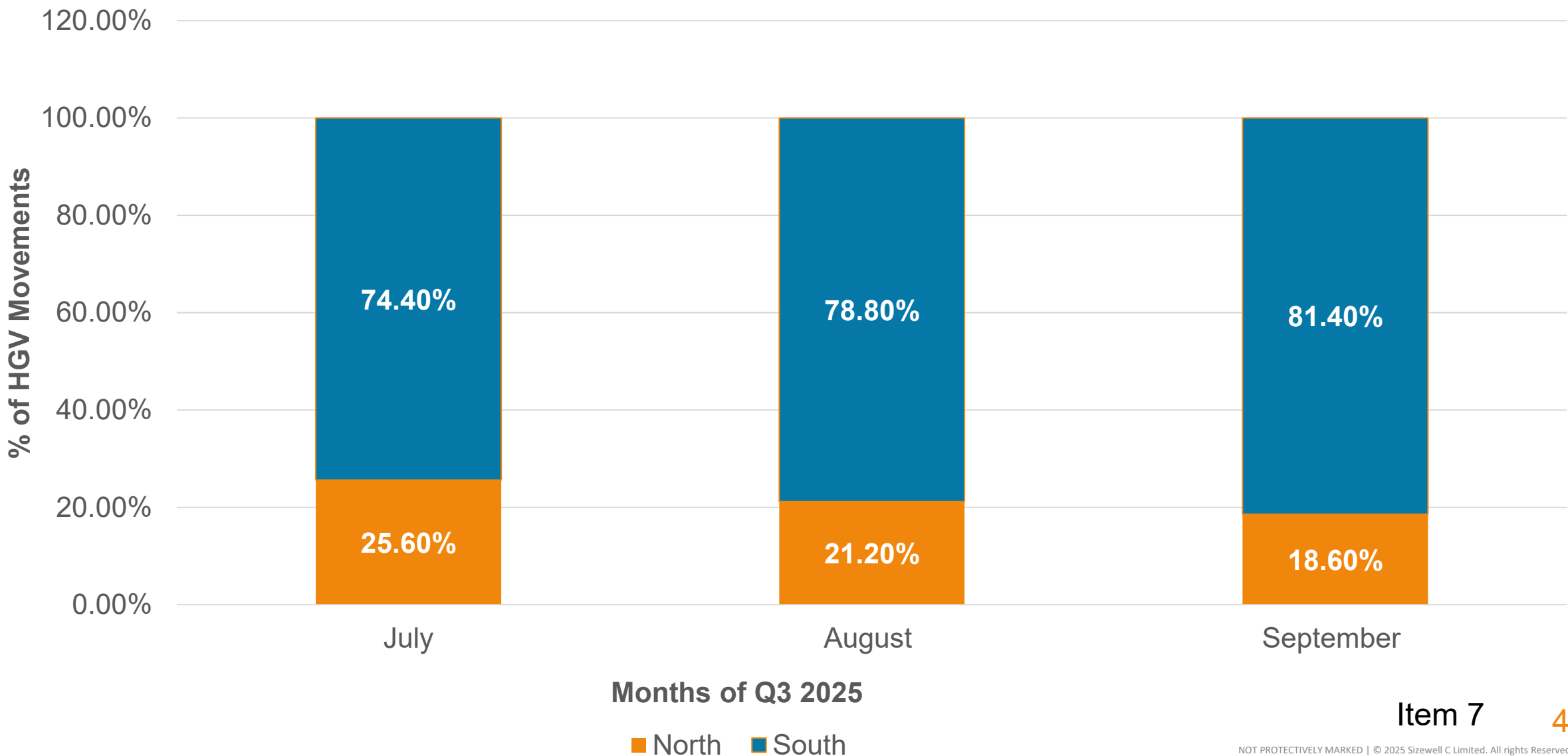
Transport Monitoring Reporting Q3 2025

Average (Mean) and Maximum Daily HGV Movements



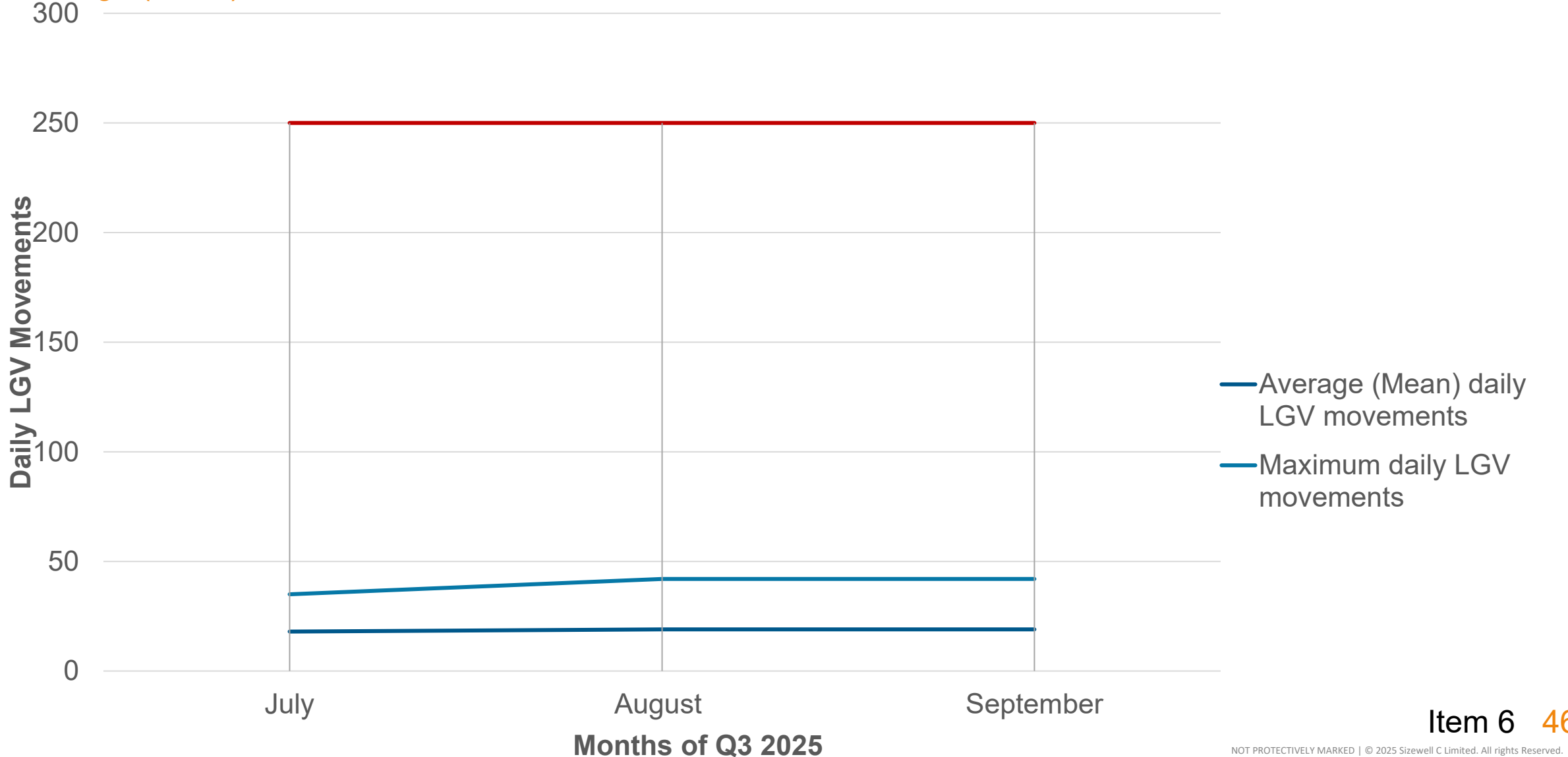
Transport Monitoring Reporting Q3 2025

Directional Split of HGV Movements



Transport Monitoring Reporting Q3 2025

Average (Mean) and Maximum LGV Movements



Traffic Monitoring 2025

Update

- Latest round of monitoring completed in October 2025
- SZC funding for permanent monitoring sites confirmed at October 2025 TRG
- Meeting on 21 November with parish councils hosting monitoring sites
- Report on first year of data collection to TRG in January 2025

Q4 2025 TRG Summary

Key Headlines

Decisions

- Speed Indicator Device funding
- Permanent Monitoring Sites funding
- Agreement of HGV movements for rebar facility

Discussions

- Transport Monitoring Report
- Traffic Monitoring Report (August 2025)
- Routes for HGVs for Off Site works

Further Investigation

- HGV parking in lay bys
- FORS alternatives
- Speeding data for key sites

Item 6: Q&A

Via Town and Parish Council Representatives

Chair

Darsham Parish Council

Q1. As part of the ongoing discussions regarding the Northern Park and Ride, can the Forum please clarify the proposed phasing of its opening in relation to the completion of the roundabout. Can the Forum explain whether any alternative access arrangements that maintain the existing A12 and local roads capacity - and also mitigate any potential congestion or safety risks - have been made? Darsham Parish Council is concerned that, if so, any temporary traffic management, including temporary traffic signals near to the Willow Marsh Lane and The Street that effects traffic flow on the A12 is avoided. It is crucial that any measures put in place do not displace traffic to the surrounding rural lanes.

Q2. Can the Forum please confirm how it intends to collaborate and coordinate the major energy onshore works proposed by National Grid Sea Link and the emerging NG Lion Link. What will be done to mitigate the cumulative impacts on the local transport network - rural lanes - and the local community? The heavy imposition the works are now placing on local villages and communities is Increasing daily.

Theberton and Eastbridge Parish Council

Q1. There has been a considerable amount of discussion between SZC and various parties about whether or not the B1125 should be extended from the existing “T” junction with the B1122 junction to the Sizewell Link Road and to stagger the B1122 crossing of the extended B1125. Whilst we share the concerns about the felling of the mature oak trees on the B1125 and would applaud any alterations to the plans to avoid any such felling please can SZC confirm that the junction of the B1125 with the SLR, as approved in the DCO, will go ahead along with the attendant alterations to its junction with the B1122?

Q2. On 29 September we were informed by letter that Pretty Road would be closed from for over 20 months from 27th October 2025. Previous verbal communications and assurances had suggested the closure would be for 6-8 months. The B1122 Early Years Working Group met on 18th September but this proposal was not discussed at that meeting despite SZC stating on 6th August, at the Northern Transport Forum (see notes 4.04 and 4.16),

“..... that the intention was to stagger works across Q3 and Q4 to limit the impact of road closures. Rebecca Quigg noted that the contractors would attend relevant working groups to discuss local roads projects”

This did not happen or at least no mention was made regarding the proposed extended closure.

Can SZC confirm whether this extended closure of Pretty Road will be properly discussed with both Theberton and Eastbridge Parish Council and Suffolk County Council Highways as we shocked at the surprise imposition of this lengthy closure, without any consultation, especially when considering that every other road that the SLR crosses between the A12 and its junction with the B1122 just before the SZC main site entrance on the B1122 is going to be closed.

Peasenhall Parish Council

Q1 - On 27th October, we were sent the following in a notification **'Pre-submitted questions:**

The deadline for pre-submitted questions is midday on Friday 31st October 2025', it gave us only 4 days to submit our questions, please will you give our Council longer in future to discuss and submit written questions from our Councillors?

Q2 - Our question submitted for the August 2025 NT meeting has been misrepresented in your draft note, our question related specifically to SZC **HGV** vehicles passing along the A1120 and through Peasenhall, and **not to all SZC vehicles**, we ask again, when will all SZC related HGVs be fitted with blue SZC plaques as promised?, the following is a statement in the SZC meeting notes from 6th November 2024, especially the DP quotes in bold red type :-

9.05 Cllr Andrew Turner sought clarity that all HGVs coming to site will be labelled with the SZC logo. DP said **all regular deliveries will have the logo**. Cllr Turner asked what percentage of HGVs. DP did not have the exact figure for this. Cllr Turner agreed that stickers on the front would be good, particularly for community speed watch teams as it would allow people to log vehicles as they come towards them. 9.06 Cllr Sam Seddon, Peasenhall Parish Council pre-submitted this question: "Are they in use yet and will these only be displayed on vehicles over 3.5 tonnes GVW or on all SZC vehicles of any size?" But following the questions (9.03/9.04 /9.05), asked for points of clarification: **"Are all HGVs coming to site will be labelled? Answer: DP confirmed that all regular deliveries will be labelled** "What percentage of HGVs do you think will be 'regular'? Answer: DP said he did not know.

As you see, the plaque position was made quite clear to us last year, so we now hope that our residents can be reassured that you have kept your earlier promise.

Also, in SZC replies, we have been told that images of HGV vehicles fitted with the blue plaque were available in SZC brochures, we have not been able to locate these images and request that your office please sends copies to us to display in our village noticeboard.

Middleton-cum-Fordley Parish Council

Q1. Please can you report progress and concrete action dates for the following, which have been promised at previous Forums and meetings:

- review of B1122/ B1125/ SLR junction including modelling of post-SLR traffic including alternatives
- creation of an SLR Forum or Action Group

Q2. As requested but not adequately answered at the recent Main Site Forum, what is being done to prevent speeding on the B1125 through Middleton both in terms of policing and traffic calming measures?

Blythburgh Parish Council

Q1. Why do the “Sizewell Police” now resident at the Darsham Garage café refuse to do other roads policing (eg speeding on A12) when not monitoring wide loads ?

Q2. What plans are there to maintain the A12 to an adequate level given heavy additional loads due to Sizewell eg resurfacing at Yoxford two years ago failed but has never been remedied; relevant stretch of the road is now rutted and breaking up).

Westleton Parish Council

Q1. The traffic calming works within Westleton were due to be undertaken in November/December 2025. Is this still the planned schedule? If not, when will the works be undertaken?

Q2. Is the Northern Park and Ride operational? If so, is SZC now requiring all workers living in accommodation west of the A12 and North of Blythburgh to use the NPR - because they are not being allowed to park at site? How is SZC checking workers' accommodation addresses to determine who can/cannot park at site?

Leiston-cum-Sizewell Town Council

At a previous forum, LTC questioned whether traffic monitoring might be undertaken in Leiston town centre and residential roads impacted by SZC. It would still make sense for surveys to be done in order to find out whether the steps being taken to alleviate traffic locally are effective (i.e. the early opening of P&R sites and some staff working at the ACA to be relocated to Orwell Crossing). We were given assurance at the meeting that this would be taken to the transport review group for consideration. Therefore,

Q1. Please can you confirm whether traffic monitoring in Leiston will be taking place and if so, where and when?

Q2. Can you also confirm whether air quality monitoring in the town centre and on the residential roads currently affected has been agreed?

Note: This is a concern being raised by residents.

Forum Schedule

2026

Our forums are open to local people to attend as observers – and they're another great way for you to hear about our latest work.

All forum timings: 18:00–20:00 (arrival from 17:45)

Leiston Town Athletic Association,
Victory Road, Leiston, IP16 4DQ

High Lodge Darsham,
Haw Wood, Hinton, Nr Darsham, IP17 3QT

Stratford St Andrew Riverside Centre,
6 Great Glemham Road, Stratford St Andrew, Saxmundham, IP17 1LL

Woodbridge Rugby Club,
Hatchley Barn, Orford Road, Bromeswell, Woodbridge IP12 2PP

Main Development Site Forum	Wednesday 14 January 2026	Leiston Town Athletic Association
Northern Transport Forum	Wednesday 4 February 2026	High Lodge Darsham
Southern Transport Forum	Wednesday 4 March 2026	Stratford St Andrew Riverside Centre
Community Forum	Thursday 19 March 2026	Woodbridge Rugby Club
Main Development Site Forum	Wednesday 15 April 2026	Leiston Town Athletic Association
Northern Transport Forum	Wednesday 6 May 2026	High Lodge Darsham
Southern Transport Forum	Wednesday 3 June 2026	Stratford St Andrew Riverside Centre
Main Development Site Forum	Wednesday 8 July 2026	Leiston Town Athletic Association
Northern Transport Forum	Wednesday 5 August 2026	High Lodge Darsham
Southern Transport Forum	Wednesday 2 September 2026	Stratford St Andrew Riverside Centre
Main Development Site Forum	Wednesday 7 October 2026	Leiston Town Athletic Association
Community Forum	Thursday 22 October 2026	Sizewell Visitors Centre
Northern Transport Forum	Wednesday 4 November 2026	High Lodge Darsham
Southern Transport Forum	Wednesday 2 December 2026	Stratford St Andrew Riverside Centre



Thank you

