



# Sizewell C Southern Transport Forum

Wednesday 12th March 2025

# Agenda

Item 1: Welcome and Introduction of the Chair and Panel – *(Chair)*

Item 2: Meeting note and matters arising from Southern Transport Forum **(15th November 2024)** – *(Chair)*

Item 3: Report back from: Main Development Site Forum **(15th January 2025)** and Northern Transport Forum **(5th February 2025 )** – *(Richard Knight)*

Item 4: Corporate and Community Relations – *(Marjorie Barnes)*

Item 5: Road and Rail Updates – *(David Peacop, David Seal, and Stephen Keighley)*

Item 6: Specialist Update – Landscaping / Ecology *(Dr Stephen Mannings, Luke Stevens)*

Item 7: Traffic Movements and Transport Review Group Update – *(Rebecca Quigg and Steve Merry)*

Item 8 : Q&A – via Town and Parish Council Representative – *(Chair)*

Item 9: Dates of Future Meetings – *(Chair)*

# Item 1: Welcome and Introductions

# Sizewell C Panel

<b>David Peacop</b>	Site Operations Director
<b>David Seal</b>	Offsite Delivery Manager
<b>Marjorie Barnes</b>	Head of Regional External Affairs and Development
<b>Richard Bull</b>	Head of Planning
<b>Richard Knight</b>	Senior Community Relations Manager
<b>Stephen Keighley</b>	Senior Project Manager – Rail
<b>Rebecca Quigg</b>	Transport Co-Ordinator

## Advisors

<b>Zoe Botten</b>	Community Relations Manager
<b>Jez Porter</b>	Stakeholder and External Roads Lead
<b>Tim Newton</b>	Site Security Manager
<b>Darren Benford-Brown</b>	Community Safety Officer
<b>Spencer Bowdler</b>	Site Operations – Site Lead
<b>John Craddock</b>	Senior Project Manager

## Specialist Leads

**Dr Stephen Mannings** - Water, Ecology and Land SME  
**Luke Stevens** - Land Management Lead

Enyi Oji – Net work Rail

# Item 2: Meeting note and matters arising from STF (13<sup>th</sup> November 2024)

Chair

# Southern Transport Forum Report

March 2025



Request from Saxmundham Town Council to meet with Network Rail

Network Rail works at Little Bealings

Two-Village Bypass update

Request for additional monitoring sites for Campea Ashe Parish Council

Request to contact Suffolk Constabulary for attendance at the forum



Ongoing action for Network Rail to meet with Saxmundham Town Council and surrounding villages

Discussion with Little Bealings Cllr to outline pending works

To be provided at next Southern Transport Forum

Update to be provided in the presentation from Rebecca Quigg, Transport Co-Ordinator

Letter from Suffolk Constabulary received, to be shared at the Southern Transport Forum

# Item 3: Report back from previous Forums

Richard Knight

# Item 4: Corporate and Community Relations

Marjorie Barnes, Head of READ



Over the last year we've awarded over £100m in local contracts and have made significant headway in early manufacturing of key components for the power station.





# Supporting local businesses

- Sizewell C has signed multiple contracts with businesses across Suffolk, covering everything from construction and aggregates to building supplies and energy systems.
- Today we announced further regional contracts including a £19m contract for Ipswich-based business, Jackson Civil Engineering, who will deliver some of the local roads schemes that you will hear more about tonight.
- New contracts with local third sector partners include agreements with Royal British Legion Industries and a two-year licence to run the Sizewell C site coffee shop for Combat2Coffee, a community interest company which invests profits to benefit veterans, ex-uniformed personnel, their families and communities.





# Supporting local employment

- We've now got around 1,000 people driving this project forward both on our main development site and off-site infrastructure, and we'll have around 2,000 people by the end of the year.
- We have 61 apprentices with 52 from local high schools. We will double the number of apprenticeships across this year.
- **As a project we've delivered our key project milestone for the year keeping the project on schedule and budget.**





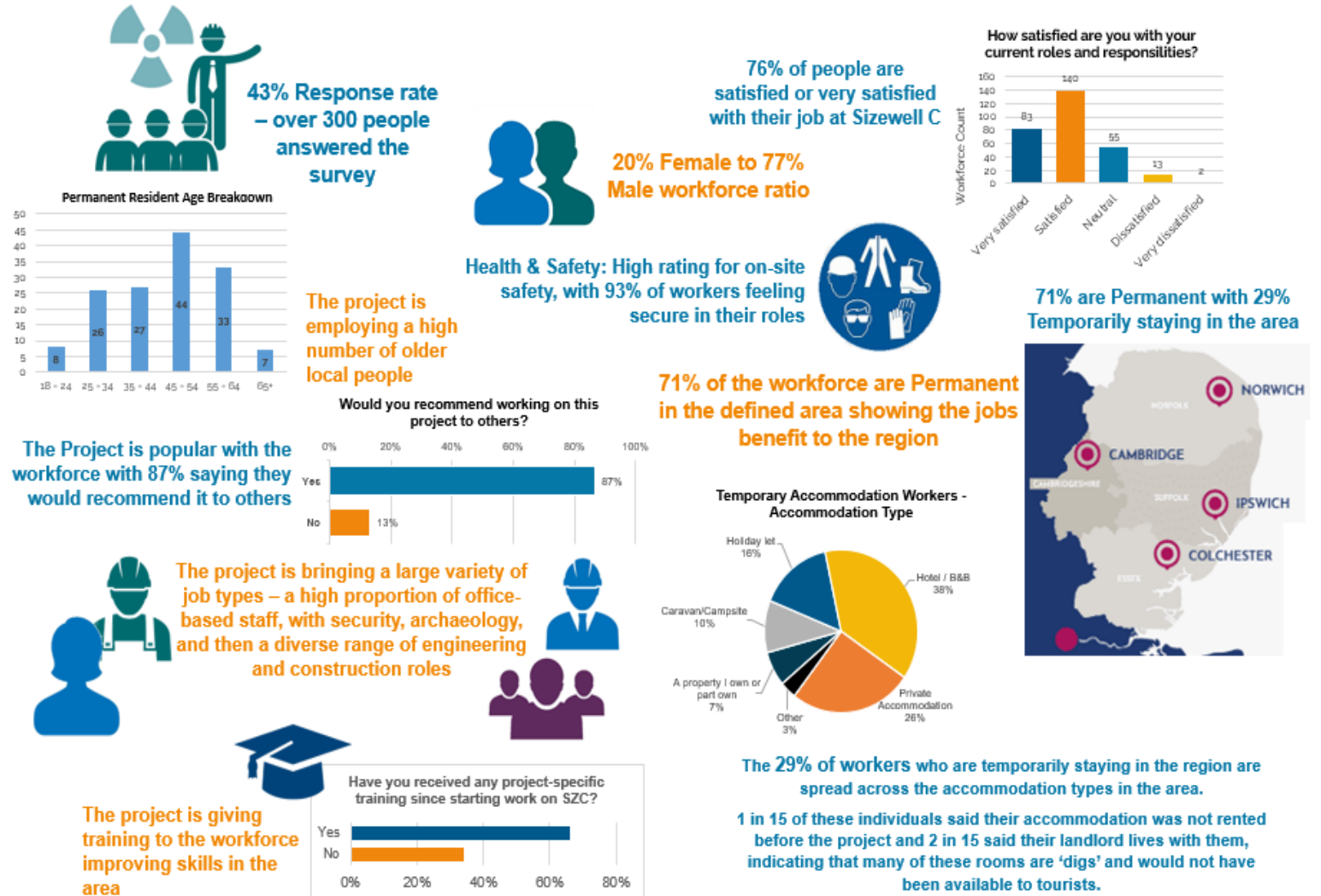
# Supporting local people

- £23m Sizewell C Community Fund with £2m available to local organisations each year for ten years.
- In the first round of awards, nine charities and not-for-profit groups which deliver services in East Suffolk received grants amounting to more than £300,000 with the next group of successful applicants to be announced later this month.



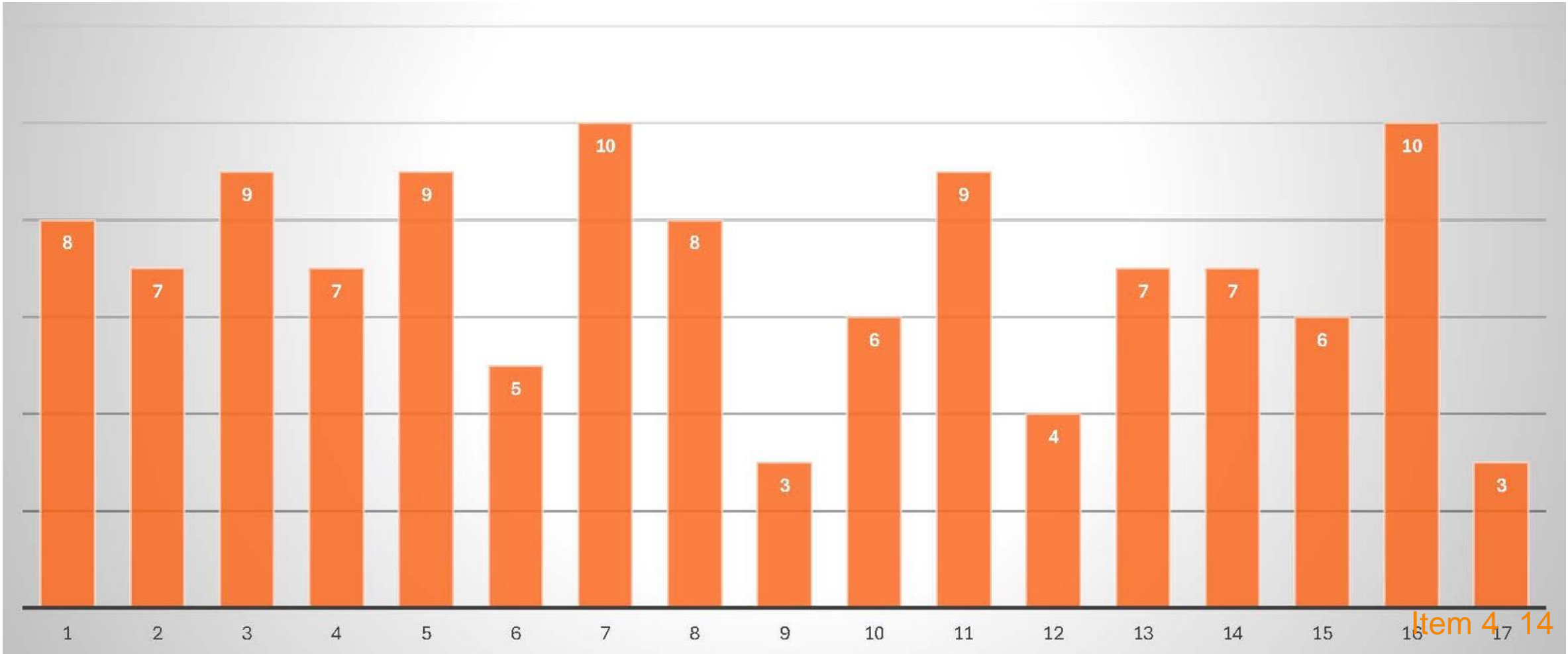
# Sizewell C Workforce survey

- Sizewell C's first Site Based Workforce Survey was completed.
- Its objectives are to evaluate accommodation and transport arrangements, assess workforce satisfaction and understand the impact of the project on the local community.



# On a scale of 1 - 10, how satisfied are you with the way the forums you attended were conducted?

1 being very unsatisfied and 10 being highly satisfied? (please select one)





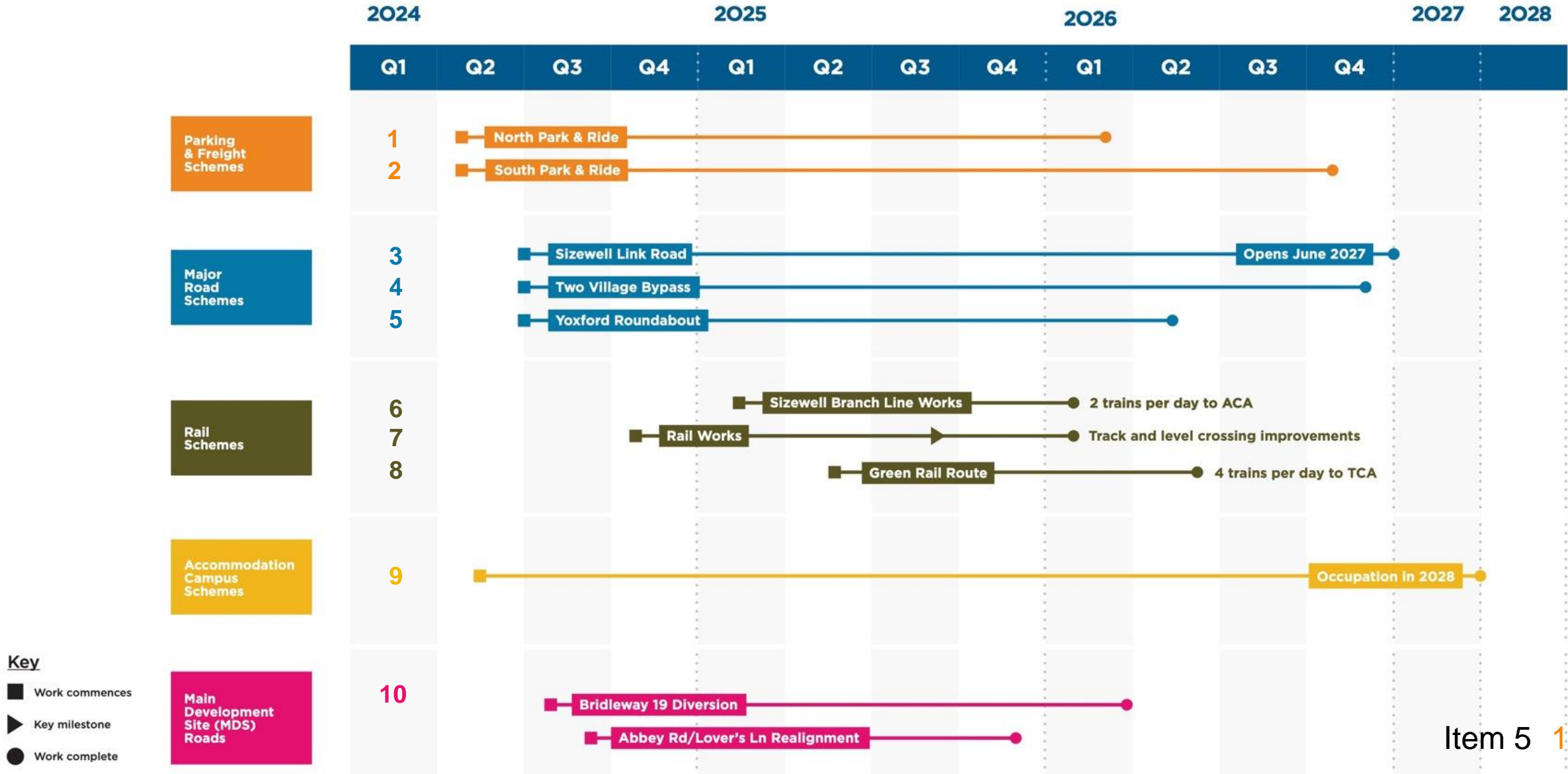
# Item 5: Road and Rail Updates

David Peacop, Site Operations Director

David Seal, Offsite Delivery Manager

Stephen Keighley, Senior Project Manager - Rail

# Site Delivery Lookahead





# Countywide Highways Signage – Semi Permanent Q2 25



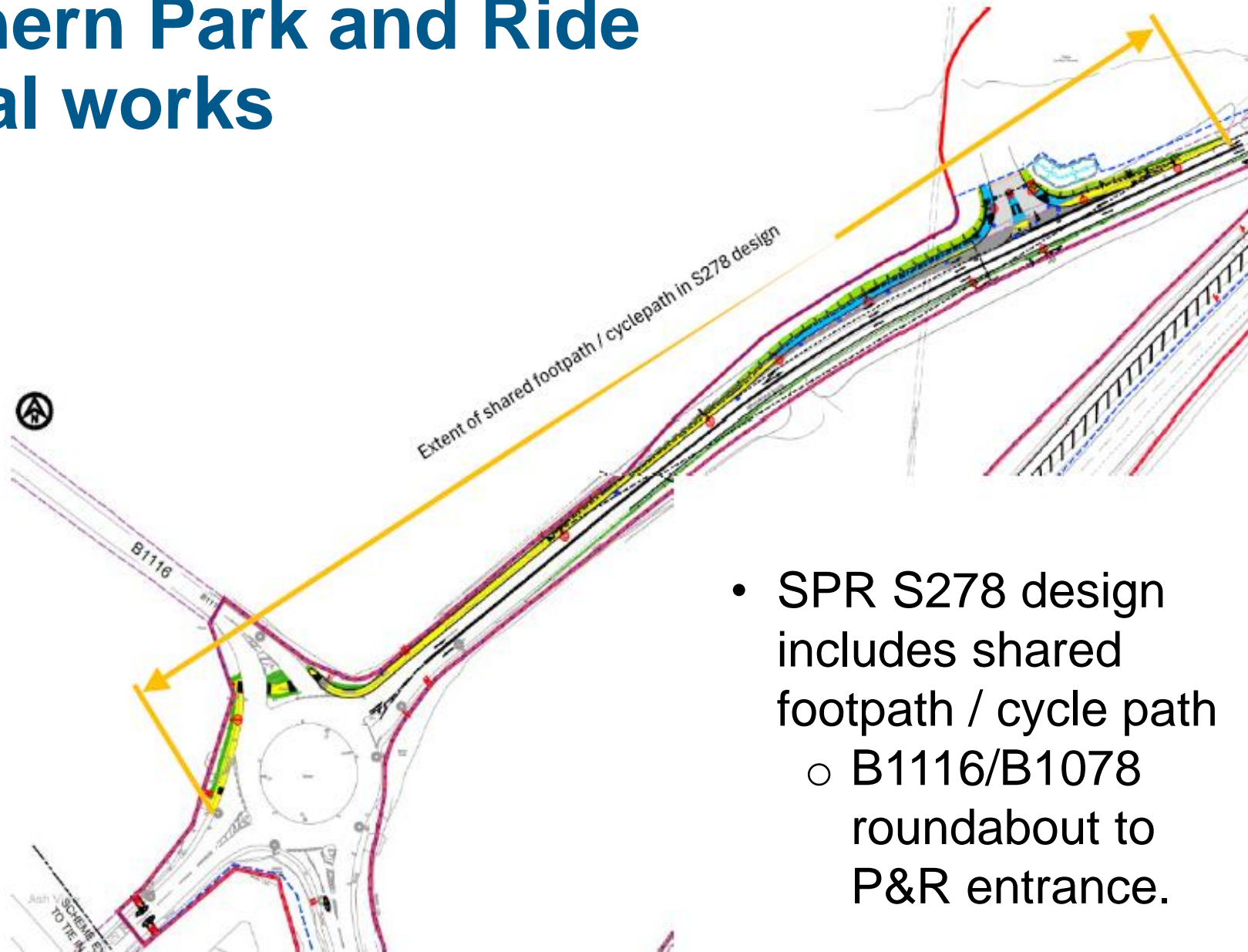
# Southern Park and Ride – Update March 2025



- Archaeology works are ongoing with SCCAS sign off progressing toward the rear of the site.
- Archaeological survey works ongoing into the Autumn
- BT Openreach ducting diversion in slip road ongoing for next two months
- Main works planned to commence summer 2025
- Footpath and cycleway improvements along the slip road initial works planned.

# Southern Park and Ride

## - initial works



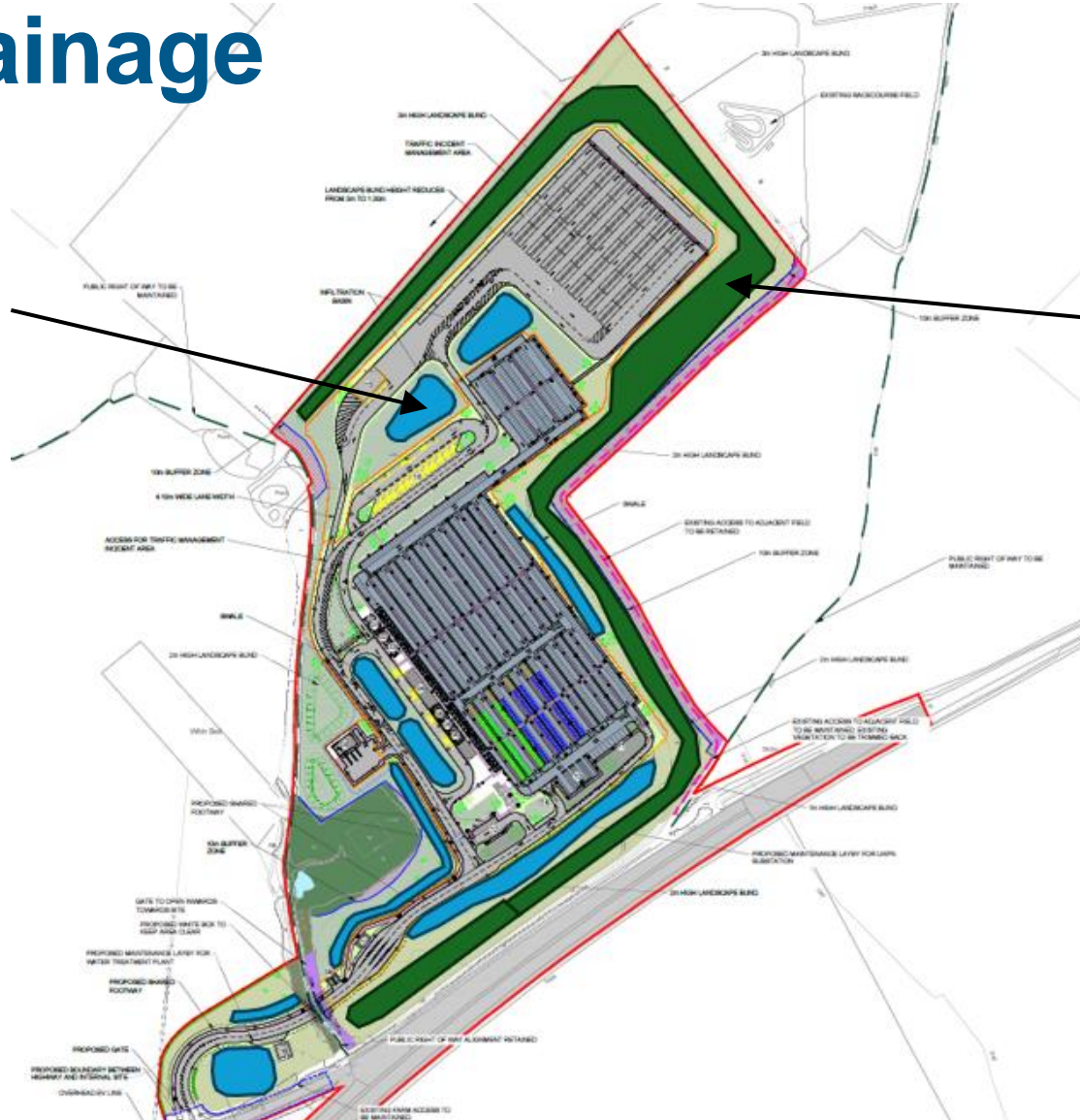
- SPR S278 design includes shared footpath / cycle path
  - B1116/B1078 roundabout to P&R entrance.



## - Surface drainage

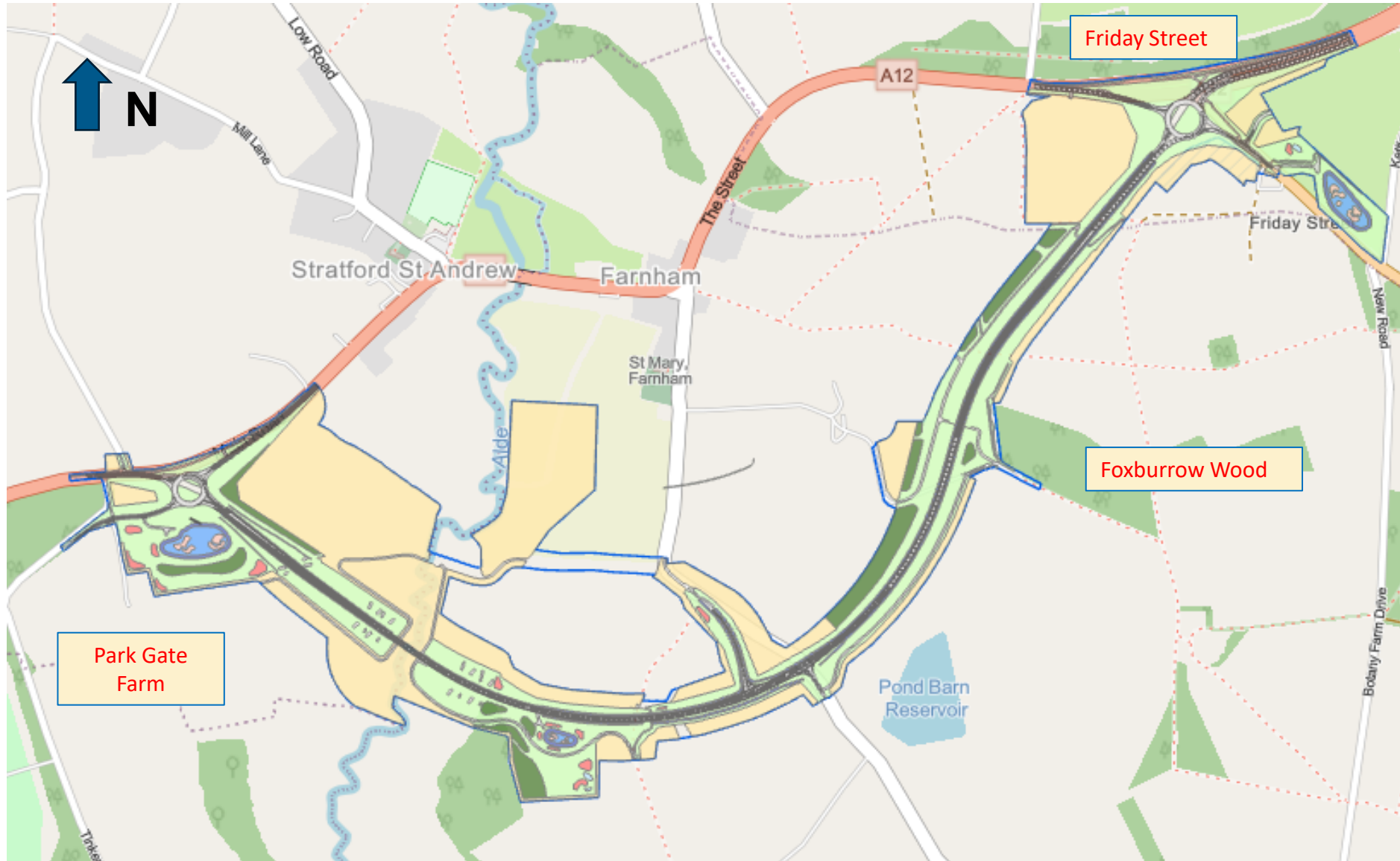
Surface water drainage from paved area is managed through a combination porous pavements with storage capacity beneath which outfall into basins that soak away to the permeable strata below.

Ground investigations have confirmed the permeability of the ground.



Landscaped visual screen  
soil bunds surround the  
northern and eastern  
boundaries to the site

# Two Village Bypass - Update March 2025

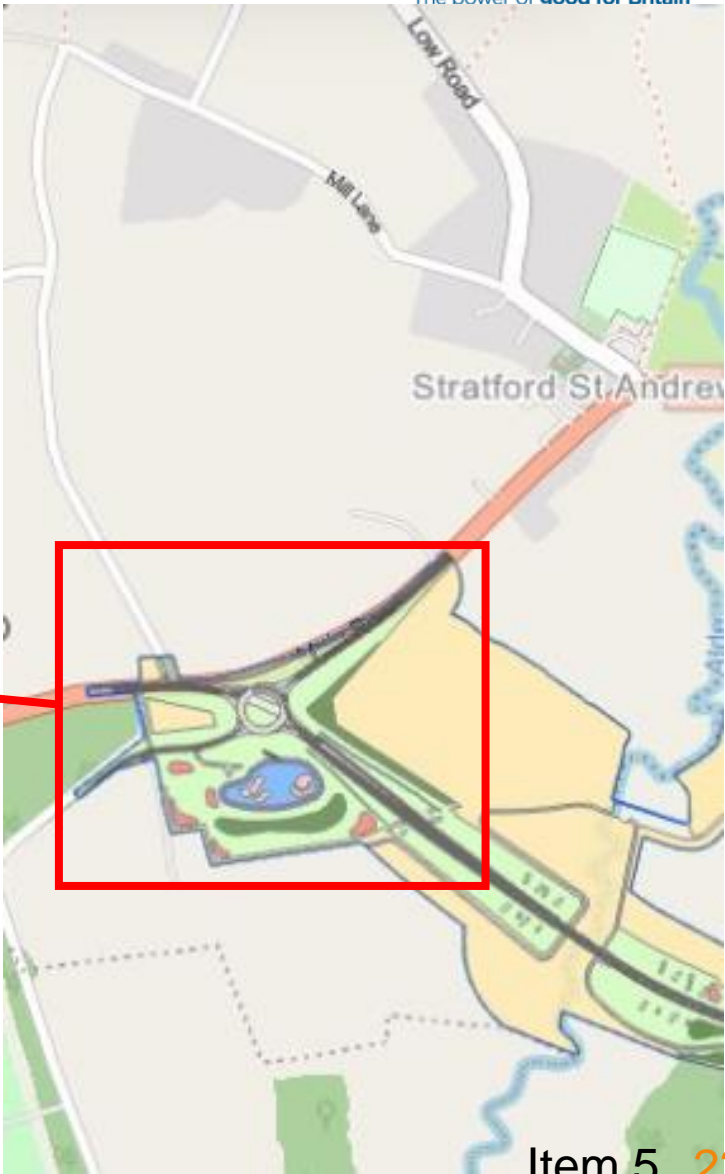


- Detail Design Complete and With SCC for Technical Approval expected end April 25
- Archaeology Clearance works ongoing
- Tree and Ecology Clearances Ongoing
- Site Access works at Friday Street
- Main Contract awarded and in Pre-construction phase
- Main works to start early Summer 2025

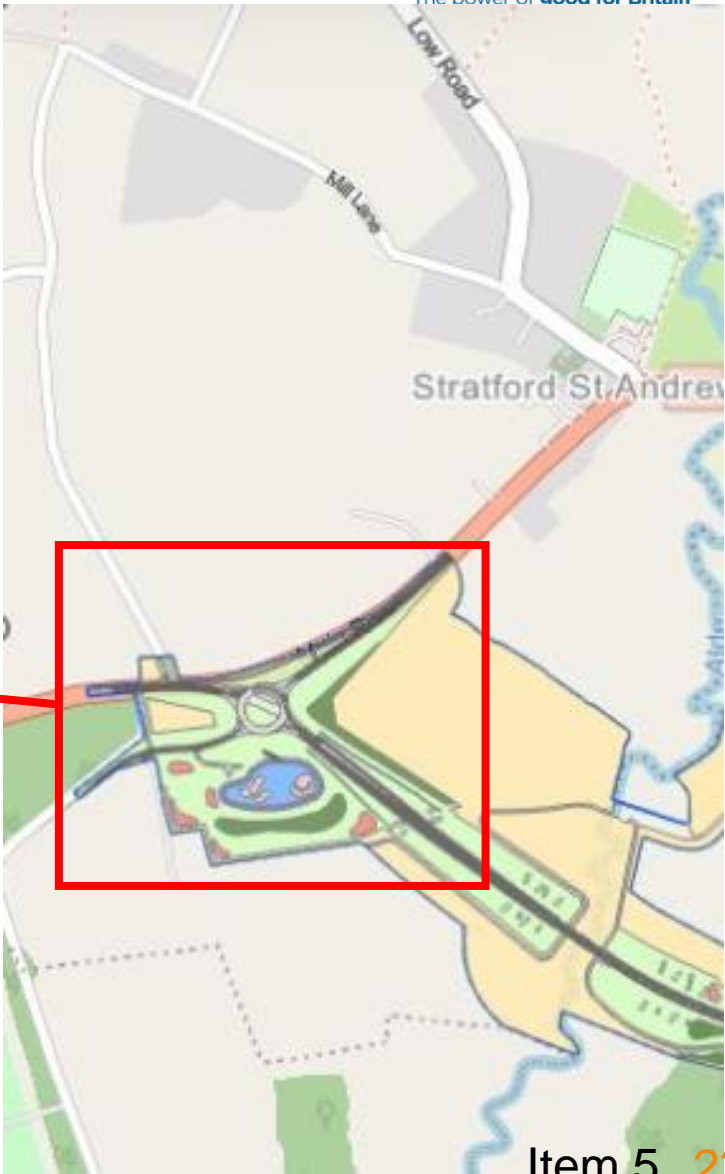
Item 5



# Two Village Bypass-West Roundabout Park Gate Farm

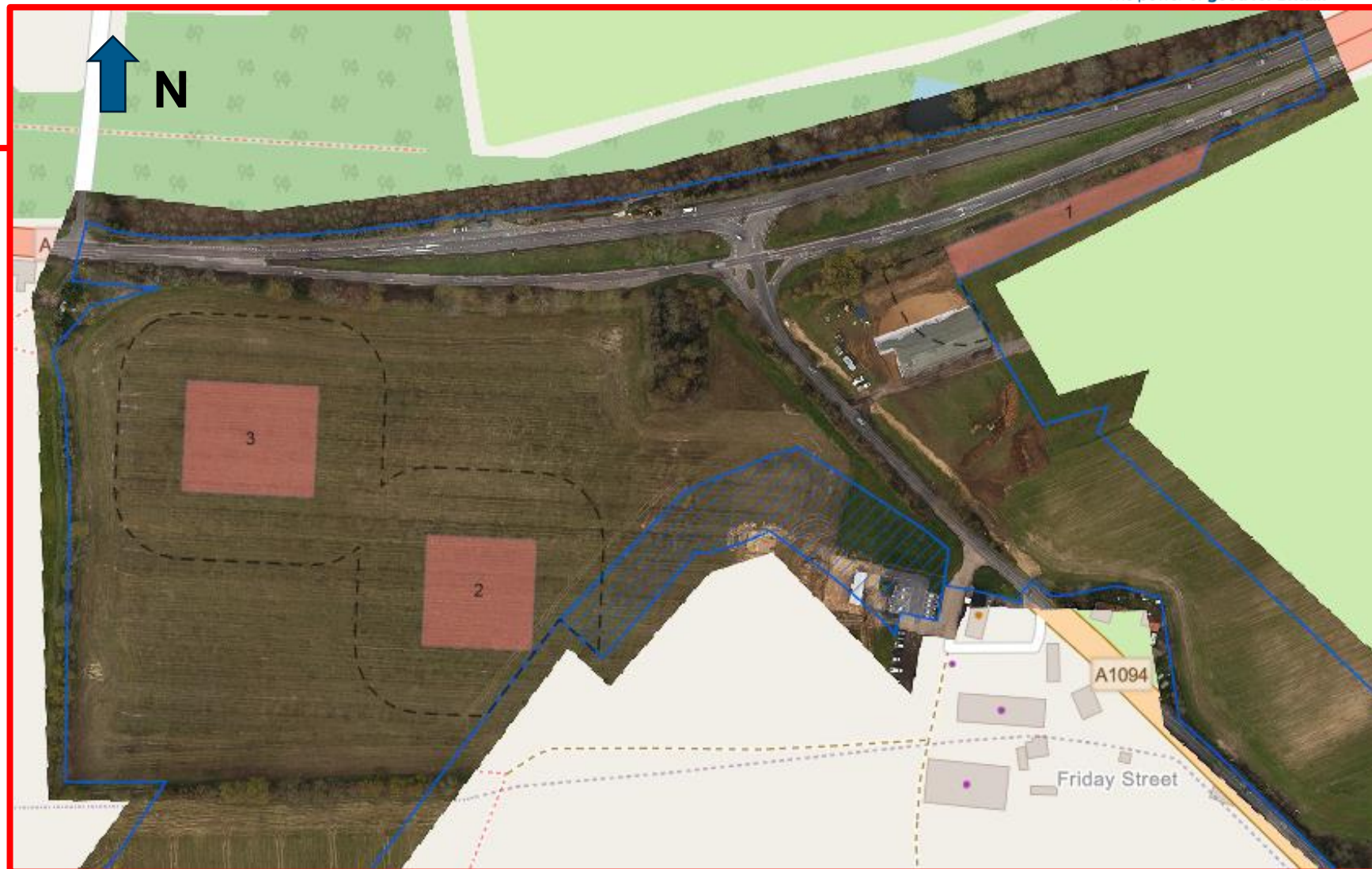


# Two Village Bypass West Roundabout – Park Gate Farm



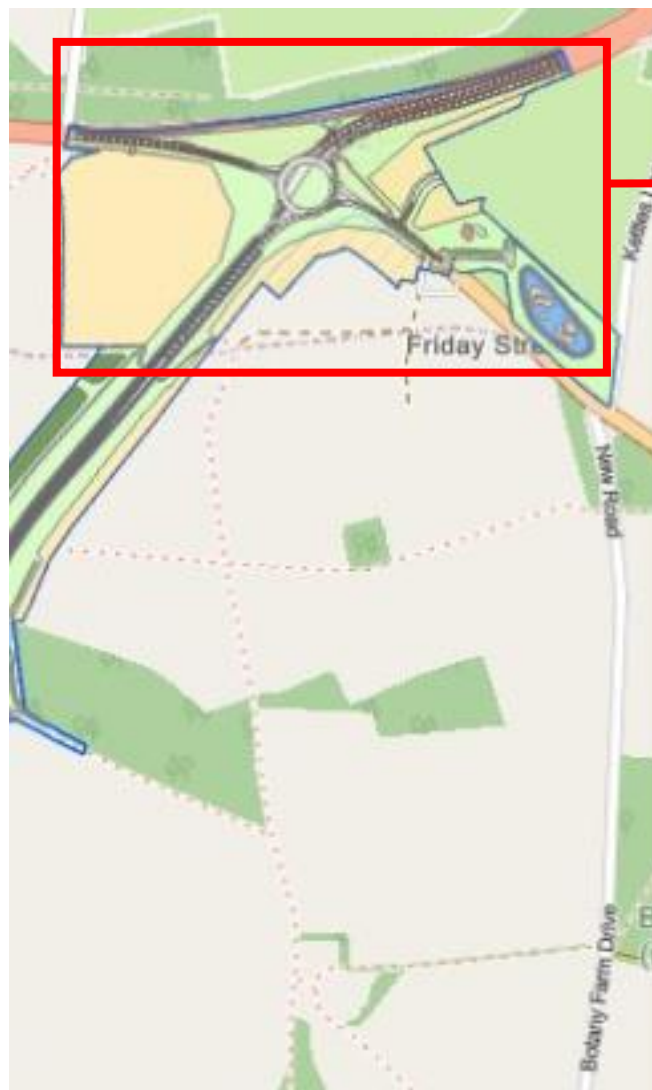


# Two Village Bypass - Friday Street Roundabout





# Two Village Bypass- Friday Street Roundabout





# Two Village Bypass Friday Street – Vegetation Clearance



## A12 Improvements & Local Roads Schemes – South



### Typical improvements

- New and enhanced pedestrian footways and crossings
- New road surfacing
- Village gateways
- Safety improvements and side road visibility
- Reduced speed limits



Key road



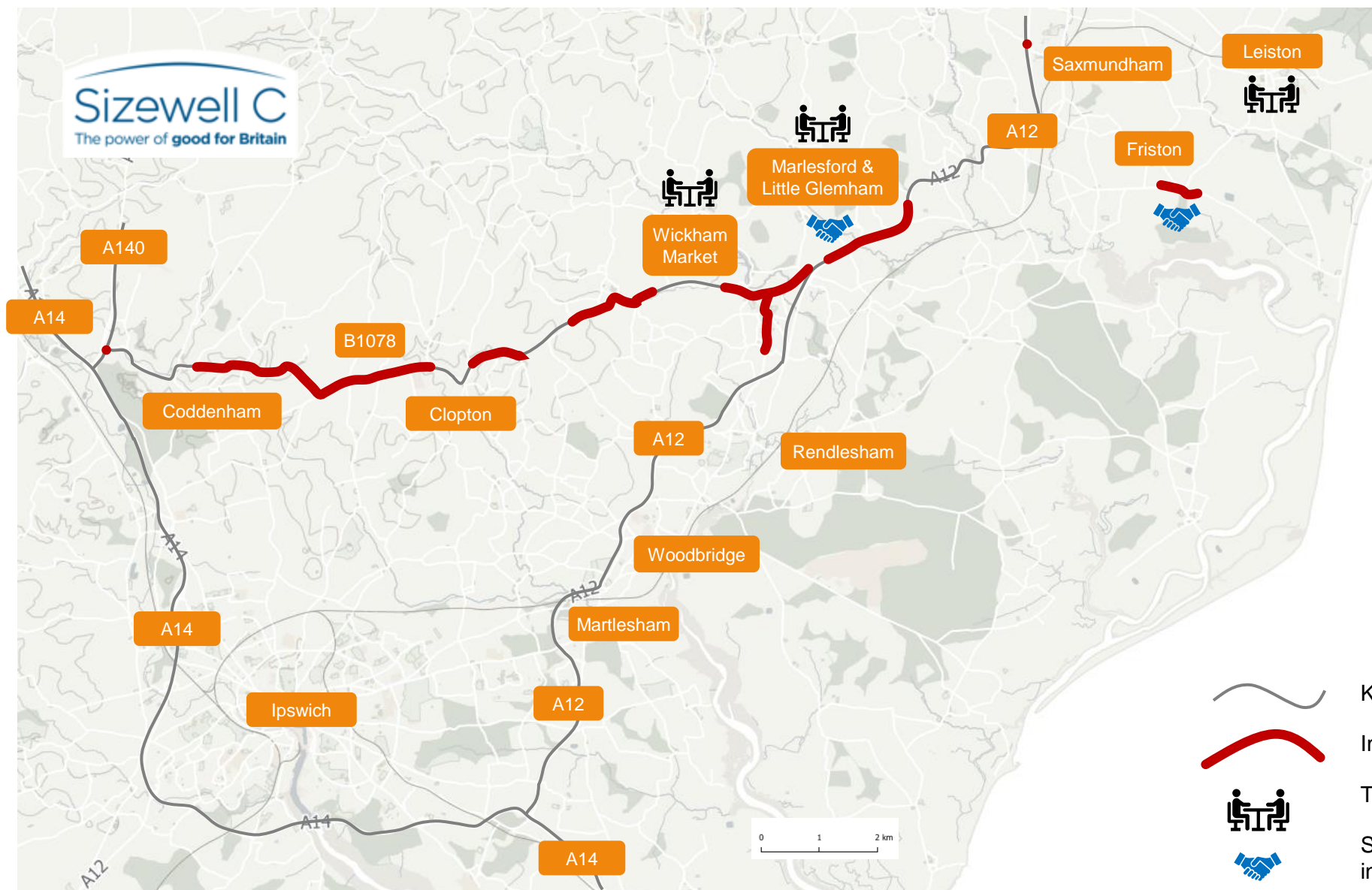
Improvement scheme



Transport Working Group



Scottish Power Renewables scheme interface





# Orwell Logistics Park - Freight Management Facility Q1+Q2 2025





# Hydrogen Buses

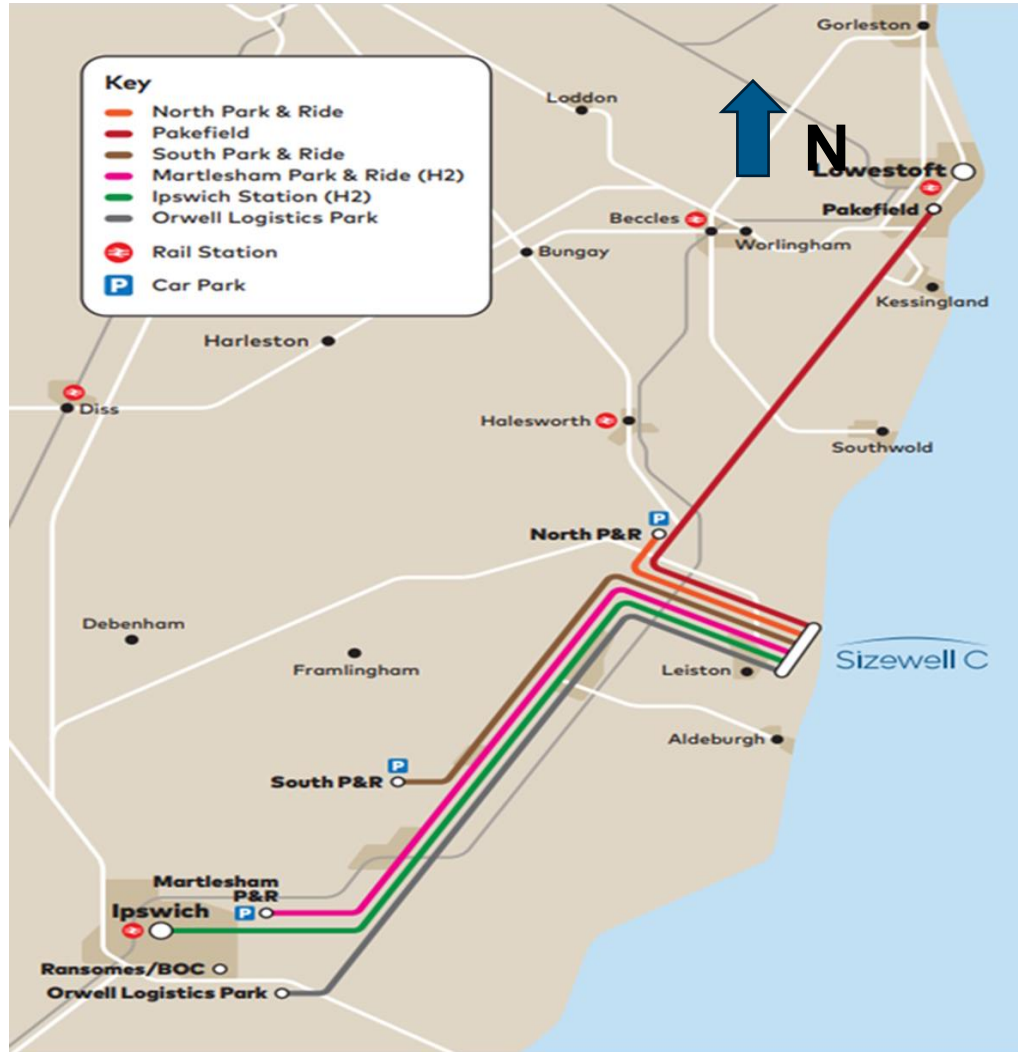


Single Deck Lower Floor Bus – 45 Seats

Seats Double Deck Bus – 66 Seats



# Passenger Service Routes



## Passenger Services from

- Martlesham P&R
- Pakefield
- Orwell Logistics Park
- Ipswich Train Station
- Northern park and ride (Darsham)
- Southern park and ride (Wickham Market)
- Development of others is dependant on workforce location



# Rail Delivery – Branchline Rail Drops (January 2025)

- 3 trains
- Total of 14km of rail dropped
- Enough for branchline upgrade



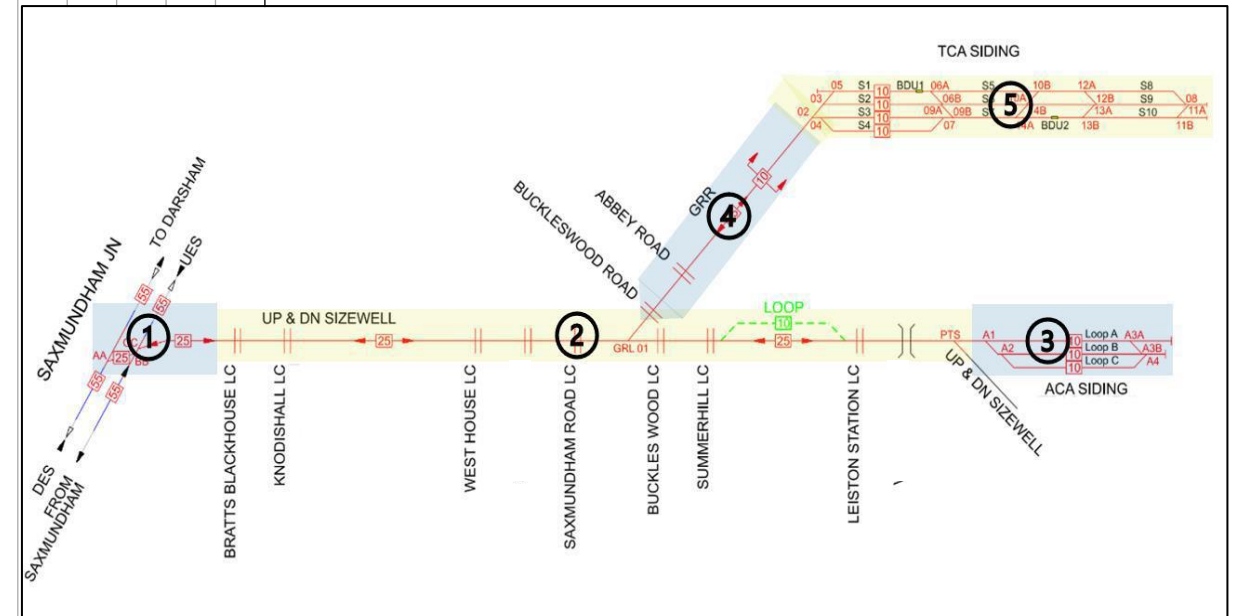
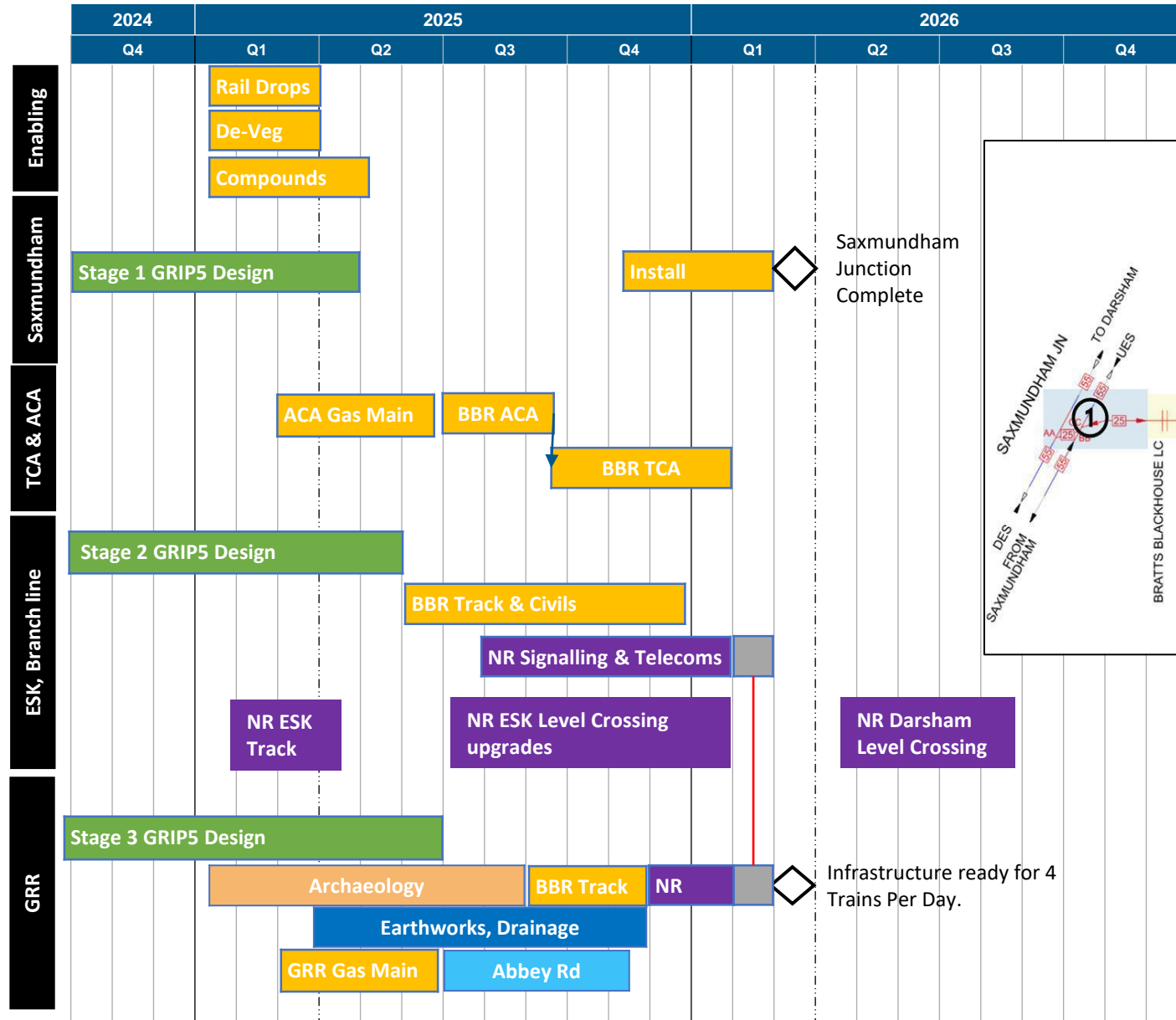


# Rail Delivery – Branchline Enabling Works (February 2025)



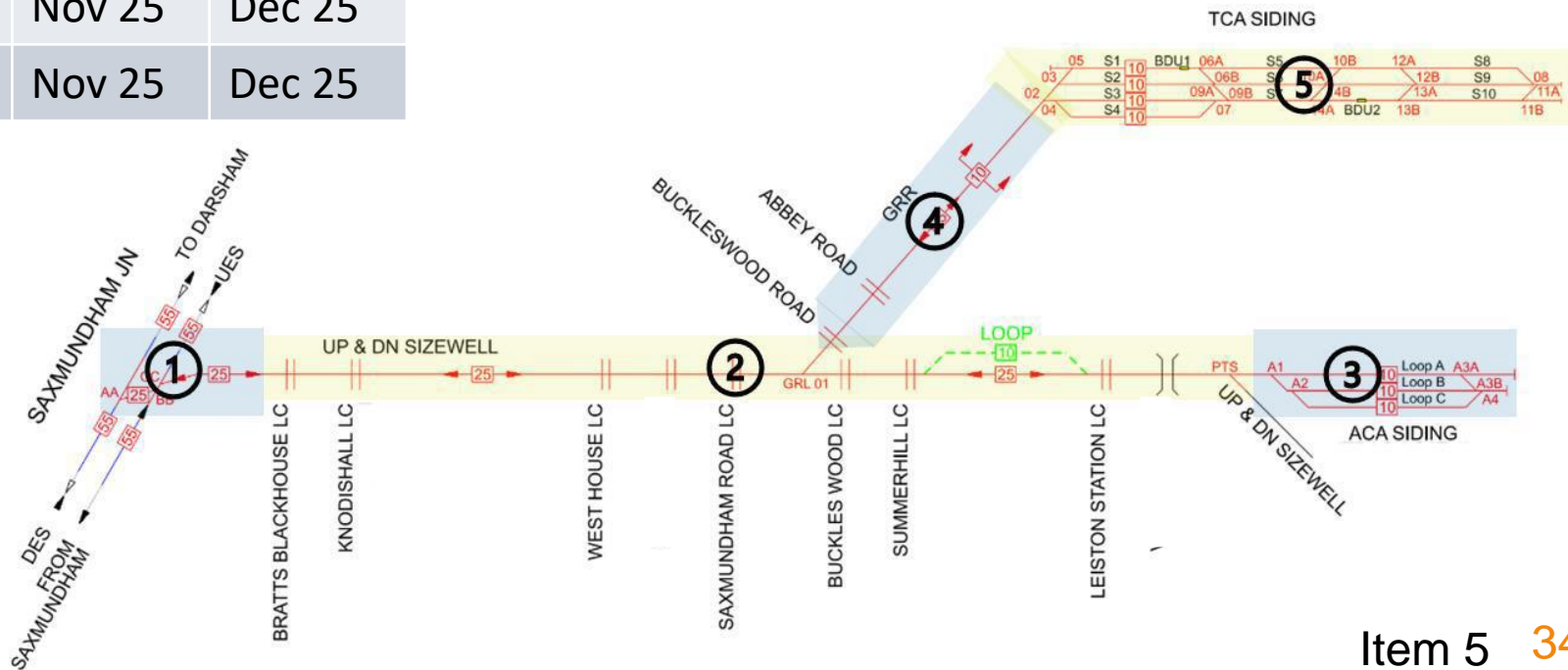


# Rail Delivery – Plan on a Page



# Rail Delivery – Branchline / GRR Level Crossings

Level Crossing	Type	Phase	Start	Finish
Leiston Station	Road	1	Aug 25	Oct 25
West House	Track	2	Oct 25	Oct 25
Summerhill	F/P	2	Oct 25	Oct 25
Knodishall	Road	3	Nov 25	Nov 25
Hodgson Ave	F/P	3	Nov 25	Nov 25
Saxmundham Rd	Road	4	Nov 25	Dec 25
Bratts Black House	Road	4	Nov 25	Dec 25



# Southern Transport Forum



## ESK Level Crossings



# Rail Delivery – ESK Level Crossings

Level Crossing	Start	Finish
Kingston Farm	November 2025	January 2026
Melton Sewage	October 2025	November 2025
Dock Lane	November 2025	December 2025
Ellingers	August 2025	September 2025
Blackstock	September 2025	February 2026
Red House Farm	November 2025	February 2026
Brick Kiln	June 2025	July 2025
Bealings	November 2025	January 2026

For the majority of the construction periods, these level crossings will be open to public use as normal. Where closures are required this will be clearly communicated via Sizewell/Network Rail.



# Melton Level Crossing

Survey works are currently being undertaken at Melton level crossing throughout March and April 2025.

Overnight road closures are required and have been advertised locally through the council.

Upgrade works, for both the road and the level crossing, at Melton are currently forecast to take place Summer 2026.

Greater detail will be published in advance for any periods of disruption, to allow the local community to plan accordingly.



# Rail Delivery – Road Closures

- Network Rail plan to deliver the majority of works required for these level crossing upgrades using local arrangements between the council and landowners and to complete most of our work at nighttime where possible to avoid disruption.
- Melton Level Crossing will likely require a weekend closure during the Summer of 2026, and additional mid-week night closures to allow the rail and highway works (i.e. road widening) to be completed. Network Rail are working closely with Suffolk County Council to ensure that any road closures are delivered with minimum impact to the local community



# Item 6: Specialist update Landscaping and Ecology

Dr Stephen Mannings and Luke Stevens



# Advanced Works

## Habitat creation and screening



Advanced planting



Wild Studio



Wild Aldhurst

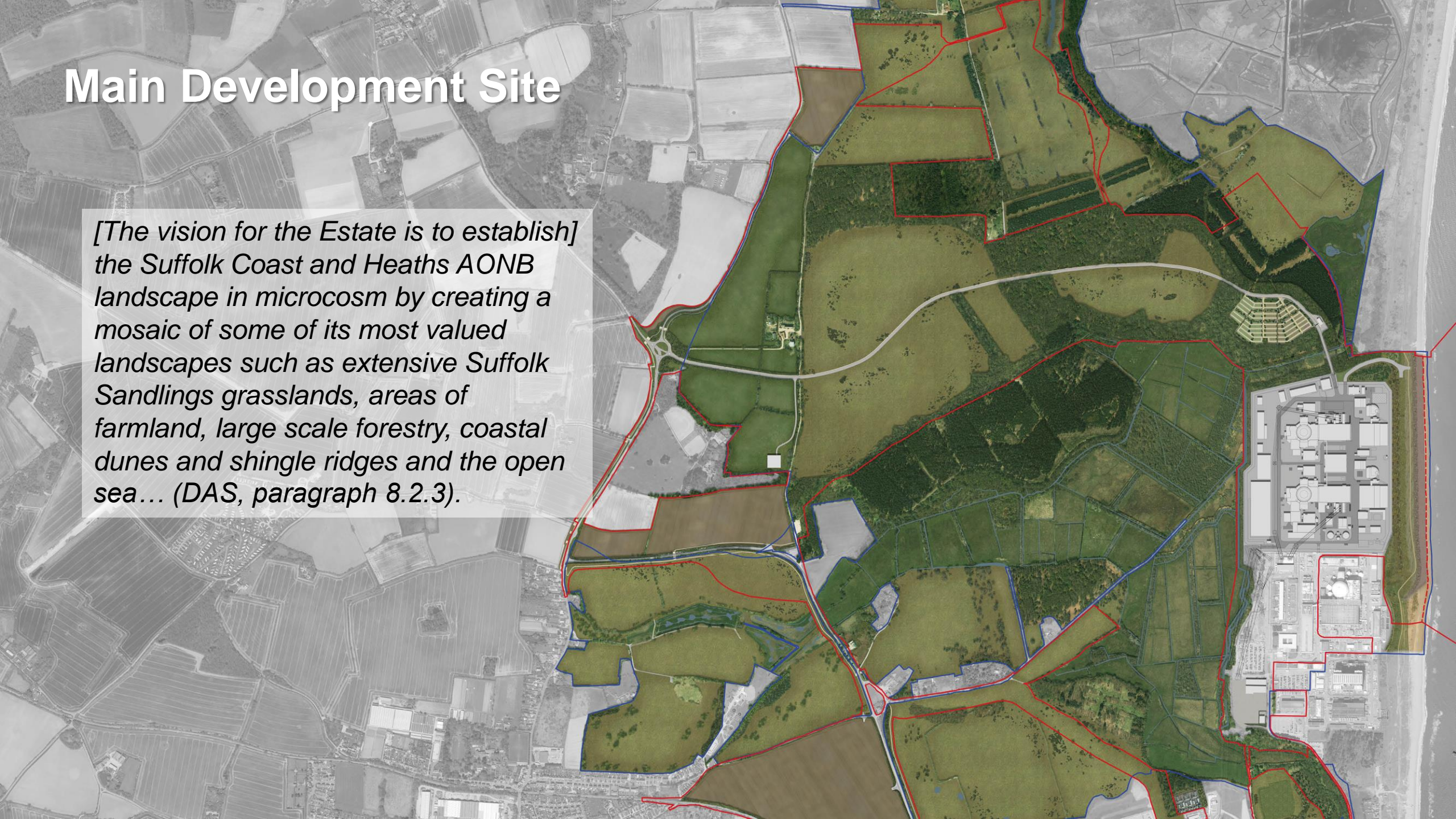


Marsh Harrier



# Main Development Site

*[The vision for the Estate is to establish the Suffolk Coast and Heaths AONB landscape in microcosm by creating a mosaic of some of its most valued landscapes such as extensive Suffolk Sandlings grasslands, areas of farmland, large scale forestry, coastal dunes and shingle ridges and the open sea... (DAS, paragraph 8.2.3).*





# Off Site Infrastructure

## Sizewell Link Road – Middleton Moor link

- Vegetation removal/retention plans secured under the DCO showed some limited impact on New Plantation
- This has been avoided during detailed design
- Extension/enhancement of New Plantation
- Good examples of how design principles work
- Replacement planting for unavoidable loss of existing roadside vegetation to maintain character of the road
- Detailed design/landscape scheme subject to technical approval/discharge of DCO Requirement 36.
- Civil works scheduled to start in Q2 2025 with landscape planting in winter/spring 2026/27



# Off Site Infrastructure

## Two Village Bypass - Overview

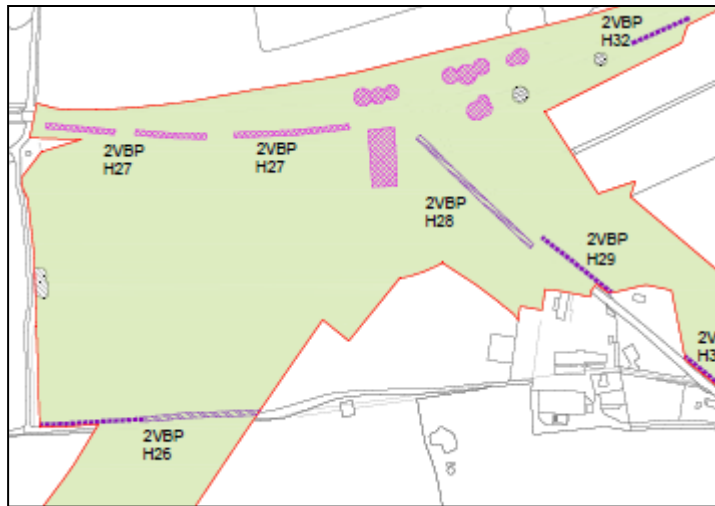




# Off Site Infrastructure

## Two Village Bypass – Friday Street

- Another good example of how we have sought to minimise vegetation loss during detailed design – but with mixed success
- Regrettably, we're unable to retain a veteran oak tree and stand of trees positioned within footprint of the new junction
- However we have managed to retain a small stand of trees within the central reservation of the existing A12 carriageway, incorporating them into the detailed landscape scheme



Vegetation to be retained / removed



Retained trees



Restoration scheme

# Off Site Infrastructure

## Southern Park and Ride

- Tree and hedgerow removal unavoidable due to access site
- Vegetation removal in accordance with approved site clearance plans – updated to reflect emerging drainage design and AIL layby proposals
- Mature tree close to access road retained in discussion with Parish Councils
- Detailed design/landscape scheme subject to technical approval/discharge of DCO Requirement 33. Planting in winter/spring 2026/27 season





# Ecological Supervision

- Site clearance activities are supervised by ecologists
- Use of best practice methods
- Work within ecological windows
- Provision of compensation habitat
- Rigorous governance arrangements



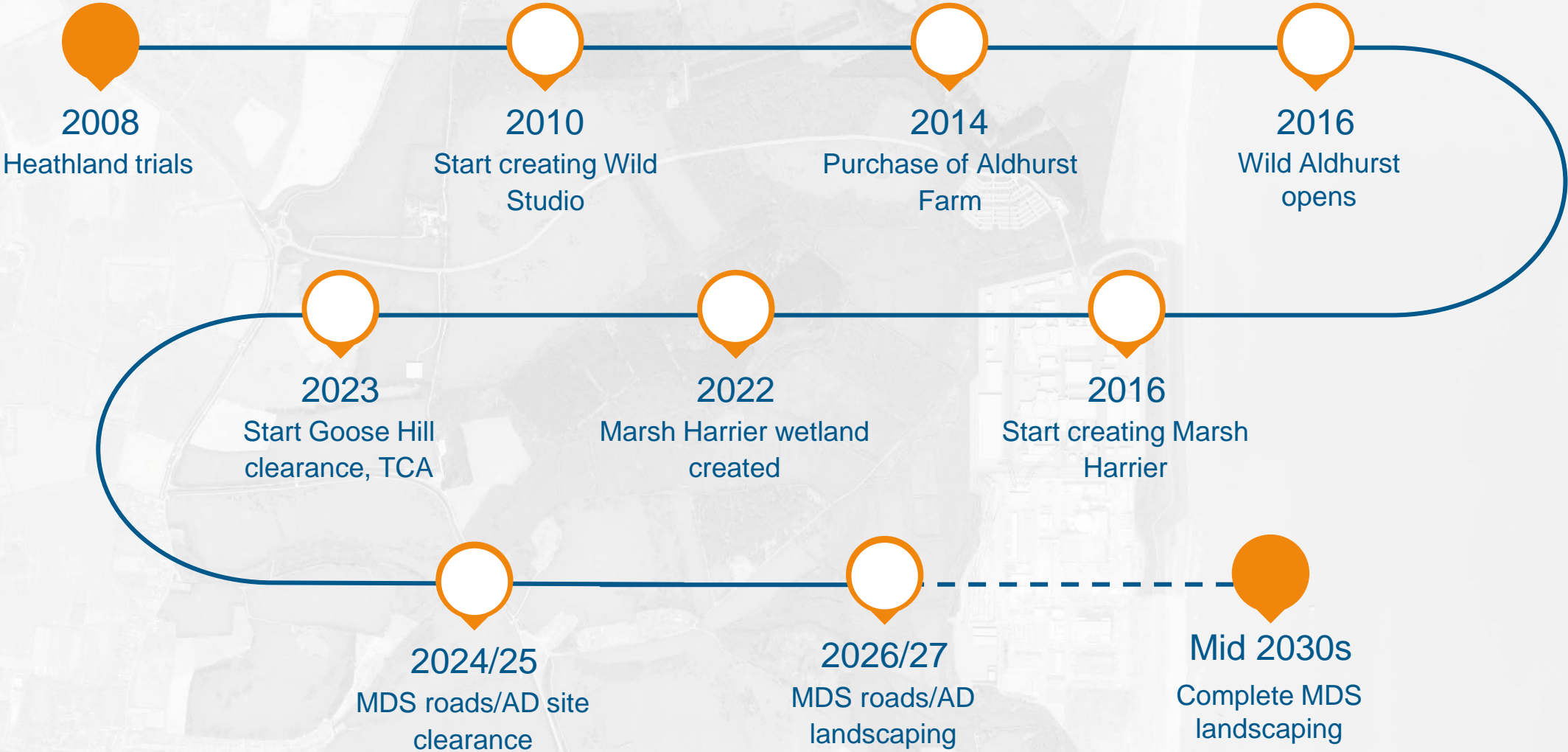


# Approach to planting

- Plants of local provenance should be used where these are available
- Species mixes should replicate as far as practicable the makeup and pattern of planting typologies found within equivalent areas of the Estate and immediate hinterland.
- Species which maximise biodiversity and provide habitat for wildlife should be included within mixes (guided by local requirements and objectives – e.g. local BAP / AONB management plan etc).
- Species should be resilient to climate change impacts and disease / pests as far as is practicable and foreseeable.
- Smaller tree sizes (at initial planting) will typically be used in favour of mature stock as they are likely to establish more quickly and have a lower demand on irrigation.




# Landscape Implementation Timeline





# SZC funding to support the Natural Environment in Suffolk

- Deed of Obligation:
  - £12m Natural Environment Improvement Fund
  - £2m European Sites Access Contingency Fund
  - Other funds to support farmland birds, wetlands, land management & skills
- Charity Deed:
  - Set up an environmental trust to protect and enhance the natural environment
  - Board of trustees has been established
  - £78m funding over construction/operation
  - Apply to Charity Commission shortly



## The Sizewell C Project

8.17/ Completed Deed of Obligation -  
10.4 Scanned Copy - Part 1 of 6


---

Book 8 Revision: 9.0  
Book 10 Revision: 1.0  
Applicable Regulation: Regulation 5(2)(q)  
PINS Reference Number: EN010012

---

October 2021

Planning Act 2008  
Infrastructure Planning (Applications: Prescribed  
Forms and Procedure) Regulations 2009





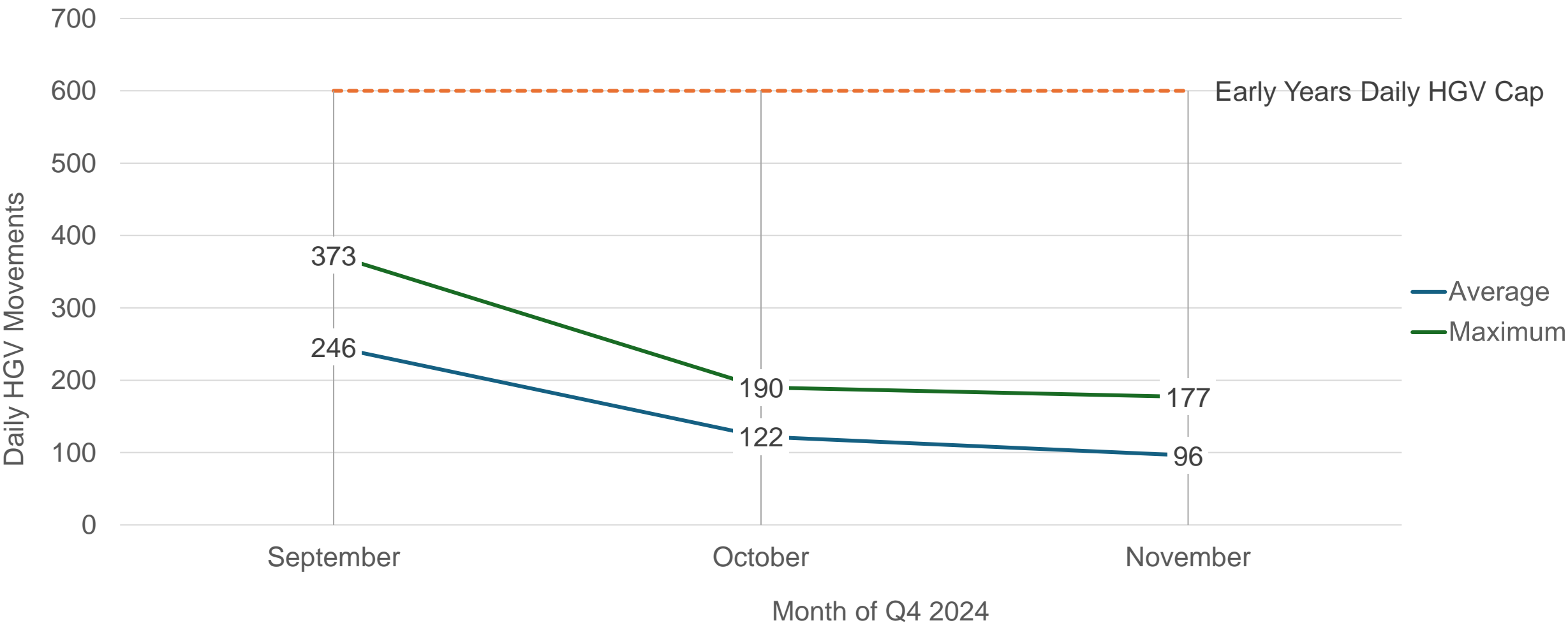
# Item 7: Traffic Movements and Transport Review Group Update

Rebecca Quigg, Transport Coordinator

Steve Merry, Suffolk County Council Highways

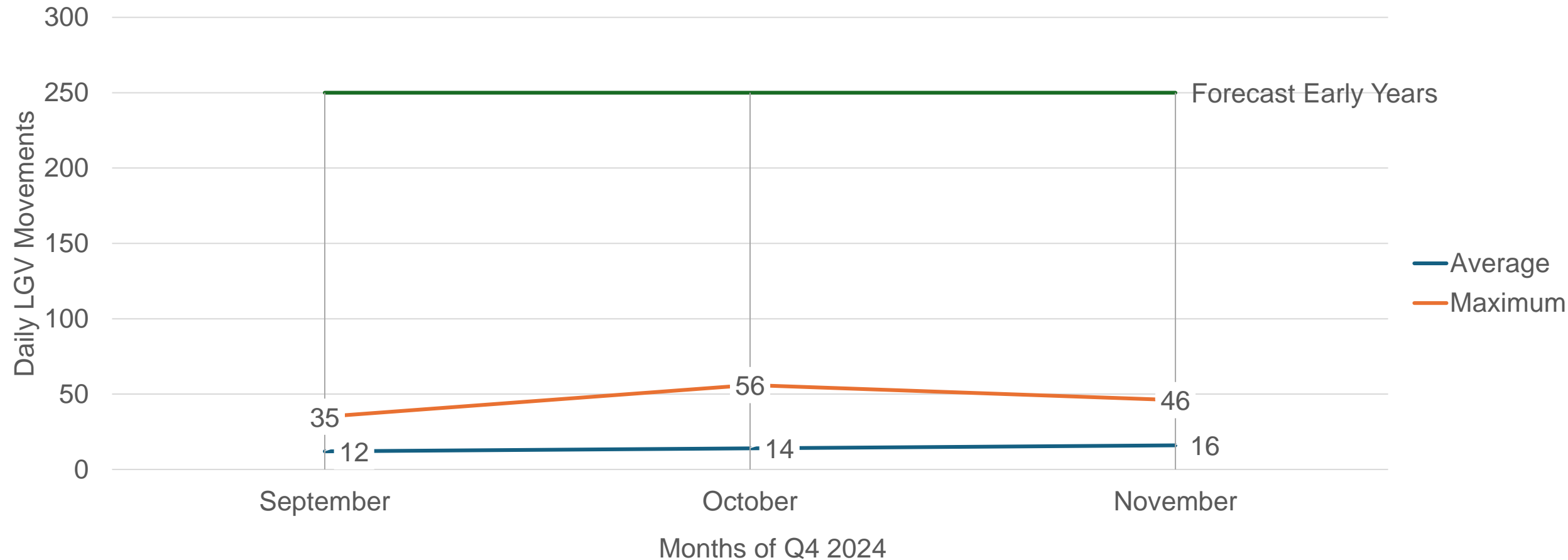
# Transport Monitoring Reporting Q4 2024

## Average (Mean) and Maximum Daily HGV Movements



# Transport Monitoring Reporting Q4 2024

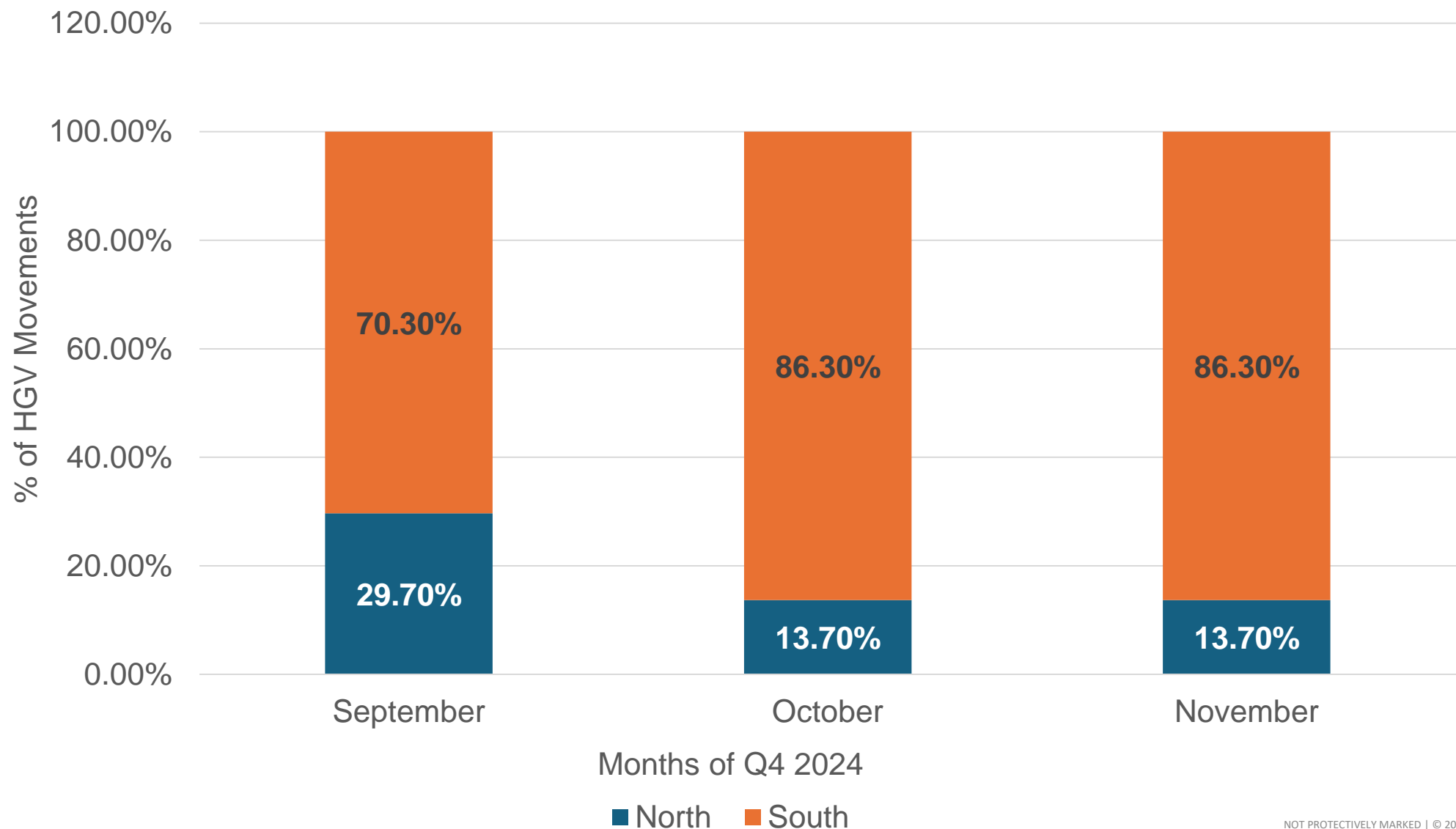
## Average (Mean) and Maximum LGV Movements





# Transport Monitoring Reporting Q4 2024

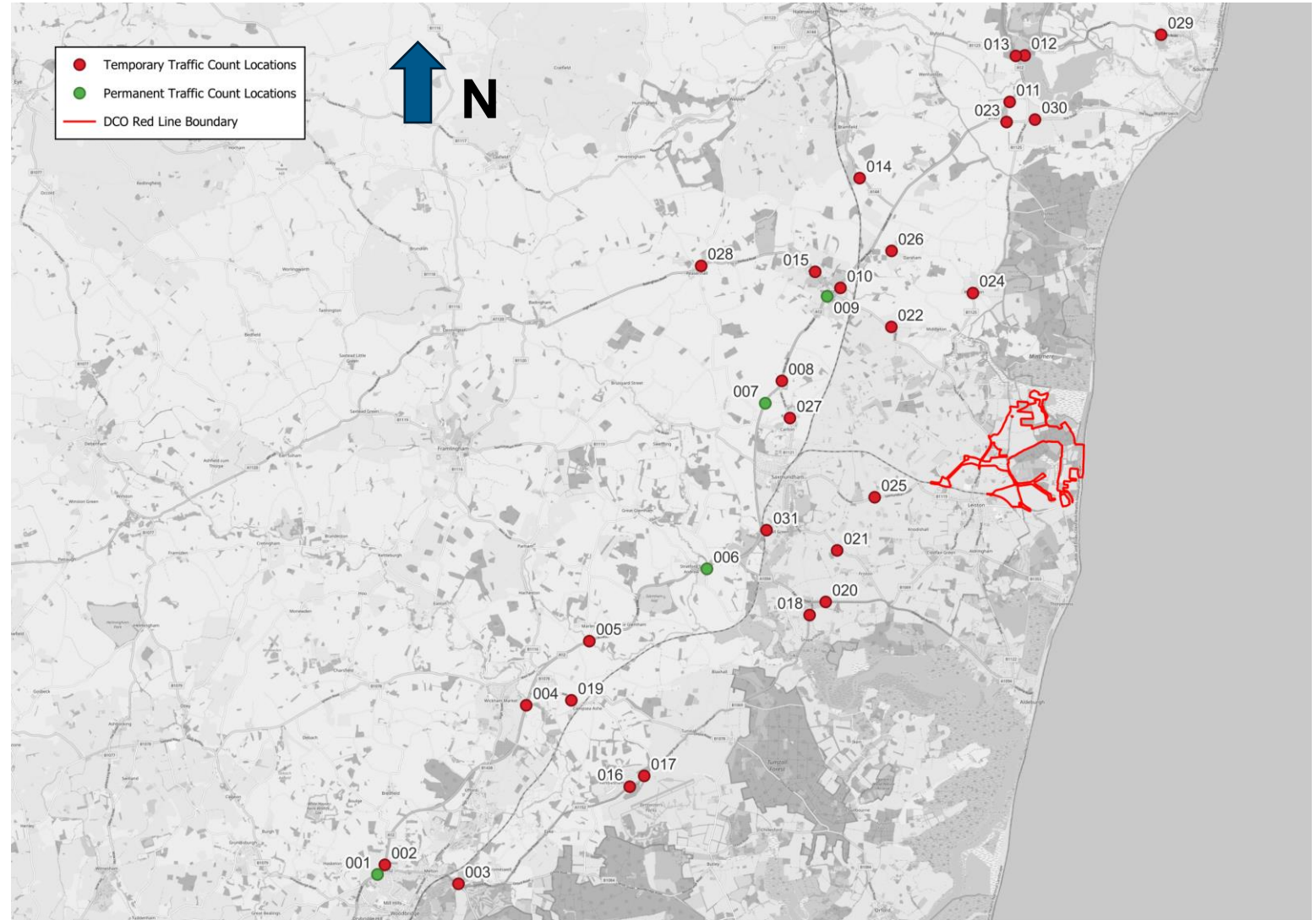
## Directional Split of HGV Movements



# Wider Traffic Monitoring

## Traffic count sites

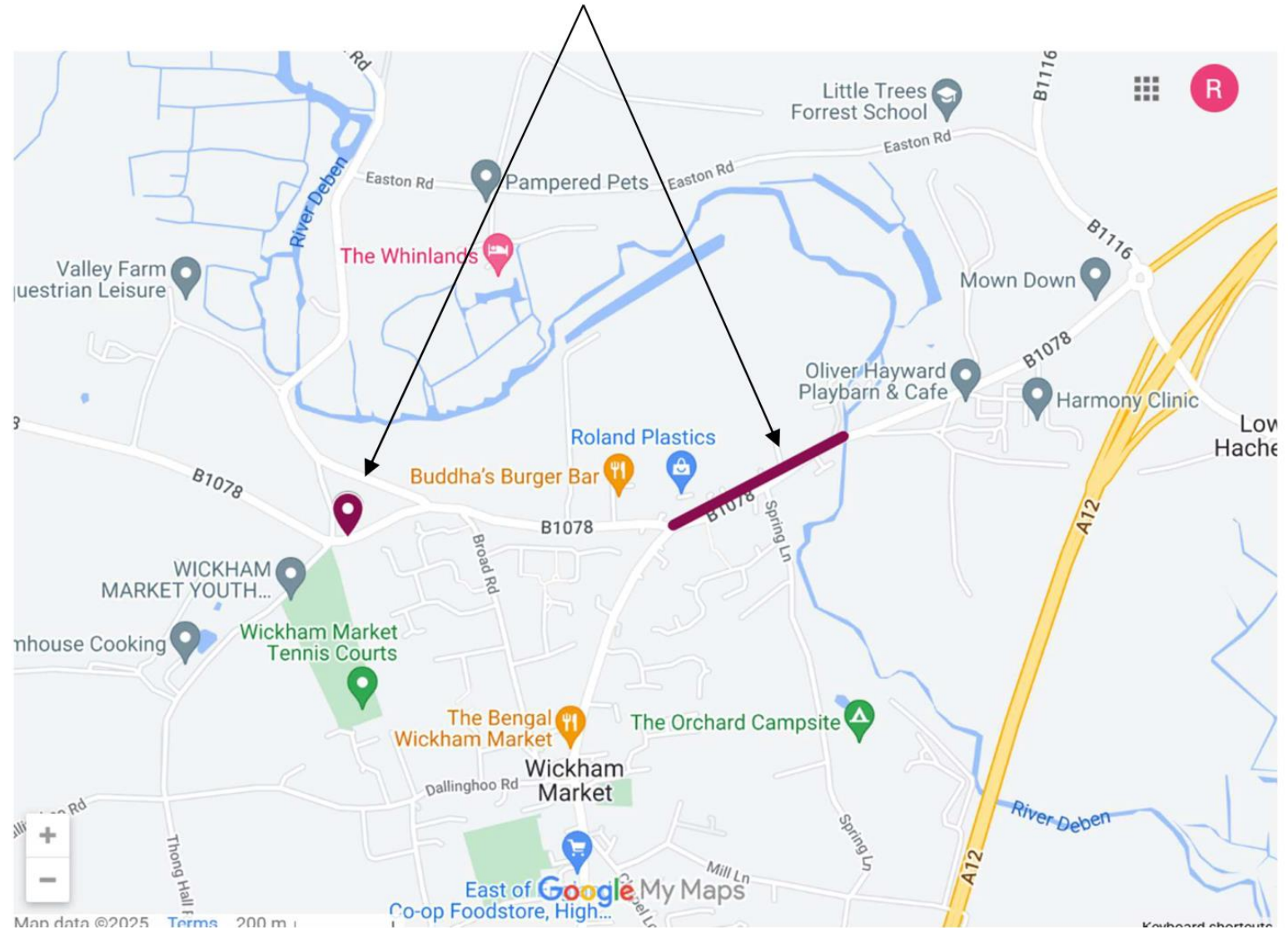
- First round of monitoring completed in Oct 24, and presented to Parish Councils in December
- Report now available
- Executive summary of analysis in development with next actions
- Further permanent counters are under discussion. Details of counters' use, reporting principles and locations to be determined by SCC and SZC



# Wider Traffic Monitoring

## Wickham Market

- One traffic counter on the outskirts and to the west of the village on the B1078
- Second counter on High Street between Border Cot Lane and Rackhams Bridge

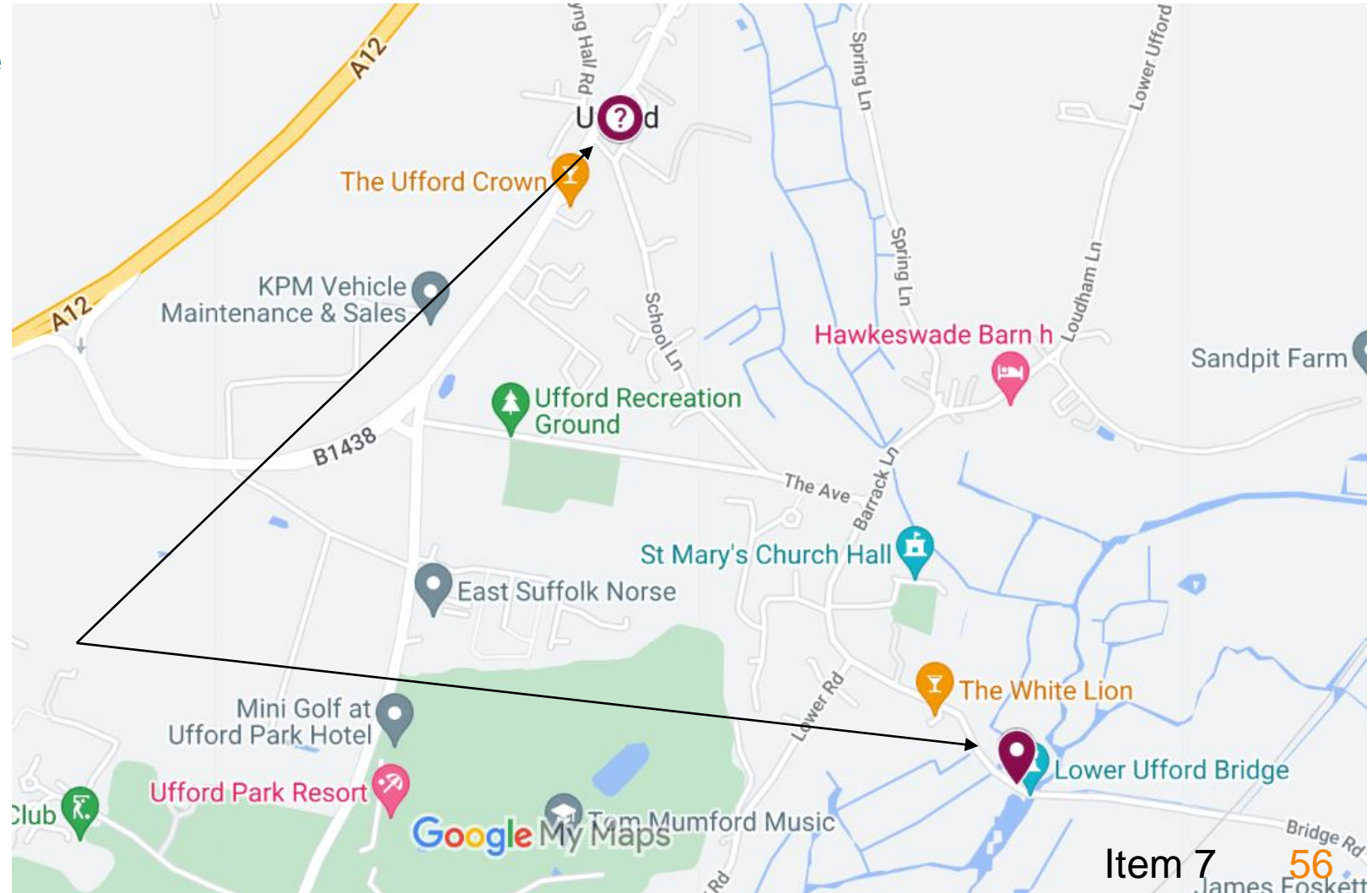




# Wider Traffic Monitoring

## Ufford

- One traffic counter agreed on Bridge Road
- One traffic counter being discussed further with Ufford Parish Council



# Transport Working Groups

## Update on Transport Working Groups



Working Group	Next Steps
Leiston	<ul style="list-style-type: none"><li>• Designs with Suffolk County Council for review</li><li>• Public exhibition of scheme elements in planning</li><li>• Next meeting: 26 June 2025</li></ul>
B1122	<ul style="list-style-type: none"><li>• Meeting held on 30 January. Designs progressing</li><li>• Next meeting: 22 May 2025</li></ul>
B1125	<ul style="list-style-type: none"><li>• Designs progressing</li><li>• Positioning of Westleton average speed camera confirmed</li><li>• Next meeting: 12 June 2025</li></ul>
Marlesford & Little Glemham	<ul style="list-style-type: none"><li>• Designs progressing</li><li>• Next meeting: 30 April 2025</li></ul>
Wickham Market	<ul style="list-style-type: none"><li>• Meeting held on 23 January. Designs progressing</li><li>• Next meeting: 15 May 2025</li></ul>
Yoxford	<ul style="list-style-type: none"><li>• Designs for pedestrian crossing progressing</li><li>• Next meeting: 13 March 2025</li></ul>

# Item 8: Q&A

Via Town and Parish Council Representative  
Chair



# Pre-submitted Questions

**Submitted by: Cllr David Chenery Wickham Market Parish Council**

As a consequence of the Southern Park and Ride site and some 1050 additional vehicle movements per day, SZC and its design consultants propose an extensive traffic calming scheme in several parts of Wickham Market village to control speeding and improve pedestrian safety. This results in the loss of several on-street parking spaces. To date SZC has offered no mitigation and suggest affected residents will find alternative places to park, perhaps some distance from their homes.

**Q1) Our council wonders if this lack of offer of any mitigation is being felt in other places, such as Leiston (hence this is a wider question for others at this Forum) and whether SZC has considered any compensation for property value losses, calculated at around £15k per property, or residents additional costs perhaps for more remote parking charges? Residents have also raised what are the chances of noise insulation?**

# Pre-submitted Questions

**Submitted by: Cllr Tim Beach Snape Parish Council**

At the last transport forum, it was disclosed that from around April 2025 both Sizewell C and Scottish Power construction traffic will be using the Friday Street junction whether to turn left or right or simply to go straight on. This could cause both congestion at Friday Street and safety issues on the rural road network due to road users looking for alternative routes to the A12. This issue was raised at the last Southern Transport Forum and the expectation is that an update and solution would be provided on 12th March. Since then, a further power project (the solar farm at Kelsale) will be under peak construction summer 2025.

**Q1) Is Sizewell C/SPR confident that (i) any solution proposed will not cause serious congestion at Friday Street and (ii) if it does cause congestion, it will not cause an overall decline in road safety by traffic being displaced onto the rural road network where there will be pedestrians, cyclists, horse riders and agricultural traffic?**

**Q2) The attendance and participation of Scottish Power and National Grid at the transport forums has been repeatedly requested. National Grid will be constructing a connection hub at Friston alongside the Scottish Power EA2 substation together with massive construction work planned for Saxmundham. If both of these developers do not attend and participate in the transport forums, despite their works being imminent and having a direct effect on Sizewell C construction (and all other traffic), can we collectively seek an explanation for their continued absence?**

# Pre-submitted Questions

**Submitted by: Cllr David Findley Ufford Parish Council**

**Q1)** Please can you share the details of the traffic calming measures associated with the Wickham Market Park & Ride facility. We understand that these have been discussed with the immediate Parish Council but not yet more widely. What is planned and what knock-on impact on traffic flows, if any, is expected?

**Q2)** What plans are in place to ensure minimisation of pollutant run-off from the projected SZC road and rail infrastructure developments (e.g. micro-pollutants from tyre and brake debris, heavy metals in excess waste water) into the surrounding rivers and streams?



# Pre-submitted Questions

## Submitted by: Cllr Richard Cooper Marlesford Parish Council

**Q1)** At Item 2.04 in the last minutes, referring to the minutes of the meeting of August 2024, the Chair stated that final design drawings for Associated Developments would be released “as soon as they are approved”. In the case of the Southern Park and Ride a request for drawings was made in July 2024 but nothing has yet been seen. Are the final designs for the Southern Park and Ride approved and if so, why haven’t the drawings been circulated? SZC committed to a meeting with local parishes affected by the Southern Park and Ride before the designs are locked down. Of particular interest is the detail of the drainage solution – a point raised by Cllr David Findley at the last STF in relation to drainage from all SZC development sites.

**Q2)** Through the traffic monitoring group, SZC has committed to peak holiday traffic monitoring in 2025 only. In its initial findings, a recently commissioned piece of private work on cumulative traffic impacts suggests that roads in the area will exceed their capacity at peak holiday periods during the construction of SZC and the other energy projects. The parishes involved in the discussions on traffic monitoring repeat their request that peak holiday period traffic monitoring should be continued beyond 2025 as this period of the year is likely to be the busiest on East Suffolk’s roads. What mitigation measures are SZC (and other energy projects) proposing to lessen the adverse traffic impacts on local residents and holiday makers?

# Pre-submitted Questions

**Submitted by: Klaus Fortmann Clerk Campsea Ashe Parish Council**

**Q1)** We have raised repeatedly the issues of additional permanent traffic monitoring stations, which should cover some important 'alternative routes' along the A12. Whilst this has been acknowledged for some time, no actual discussions with the Parishes have been forthcoming. When can these additional permanent monitoring points be discussed in appropriate detail?

**Q3)** The recent monitoring in Campsea Ashe showed traffic volumes exceeding by nearly 50% the in 2015 by EDF/SZC forecasted figures for traffic 2022 (during early stages of build) along the B1078. The actual increase (from baseline 2015 to 2024) on B1078 was 98%. How robust are SZC/WSP forecasting models and should we all be wary?

# Forum Schedule

## 2025

All forum timings:  
**18:30 - 20:30** (arrival from 18:00)

Our forums are open to local people to attend as observers – and they're another great way for you to hear about our latest work.

<b>Main Development Site Forum</b>	Wednesday 15 January 2025	Leiston Town Athletic Association
<b>Northern Transport Forum</b>	Wednesday 5 February 2025	Darsham Village Hall
<b>Southern Transport Forum</b>	Wednesday 12 March 2025	Stratford St Andrew Riverside Centre
<b>Community Forum</b>	Thursday 27 March 2025	High Lodge Darsham
<b>Main Development Site Forum</b>	Wednesday 2 April 2025	Leiston Town Athletic Association
<b>Northern Transport Forum</b>	Wednesday 7 May 2025	Darsham Village Hall
<b>Southern Transport Forum</b>	Wednesday 4 June 2025	Stratford St Andrew Riverside Centre
<b>Main Development Site Forum</b>	Wednesday 2 July 2025	Leiston Town Athletic Association
<b>Northern Transport Forum</b>	Wednesday 6 August 2025	Darsham Village Hall
<b>Southern Transport Forum</b>	Wednesday 3 September 2025	Stratford St Andrew Riverside Centre
<b>Main Development Site Forum</b>	Wednesday 8 October 2025	Leiston Town Athletic Association
<b>Community Forum</b>	Thursday 23 October 2025	Sizewell Sports and Social Club
<b>Northern Transport Forum</b>	Wednesday 5 November 2025	Darsham Village Hall
<b>Southern Transport Forum</b>	Wednesday 3 December 2025	Stratford St Andrew Riverside Centre





Thank you

