

The background is a solid blue color. There are two decorative curved segments. The top segment shows a white, cloudy sky. The bottom segment shows a landscape with green fields and a distant town under a yellow sky.

Sizewell C Southern Transport Forum

Wednesday 3rd December 2025

Agenda



Item 1: Welcome and Introduction of the Chair and Panel – *(Chair)*

Item 2: Meeting note and matters arising from Southern Transport Forum (Wednesday 3rd September 2025) – *(Chair)*

Item 3: Corporate and Community Relations – *(Marjorie Barnes)*

Item 4: Rail and Road Updates – *(David Peacop, David Seal, Stephen Keighley and David Taylor)*

Item 5: Traffic Movements and Transport Review Group Update – *(Rebecca Quigg and Steve Merry)*

Item 6 : Q&A – via Town and Parish Council Representative – *(Chair)*

Item 7: Dates of Future Meetings – *(Chair)*

Item 1: Welcome and Introductions

David Peacop	Site Operations Director
David Seal	Offsite Delivery Manager
Marjorie Barnes	Head of Regional External Affairs and Development
Richard Bull	Head of Planning
Richard Knight	Senior Community Relations Manager
Stephen Keighley	Rail Lead
Rebecca Quigg	Transport Co-Ordinator
David Taylor	Network Rail
<u>Advisors</u>	
Zoe Botten	Community Relations Manager
Jez Porter	Stakeholder and External Roads Lead
Darren Benford-Brown	Community Safety Officer
John Craddock	Senior Project Manager

Item 2: Meeting notes and matters arising from STF 3rd September 2025

Chair

Item 3: Corporate and Community Relations

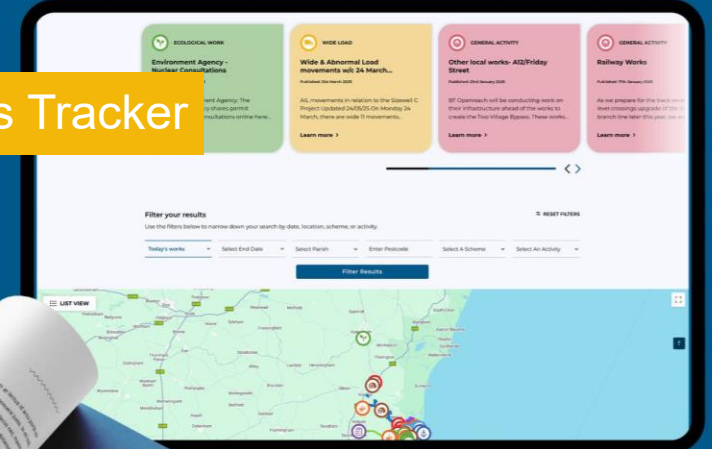
Marjorie Barnes, Head of READ

Keeping communities updated

Parish/forum meetings



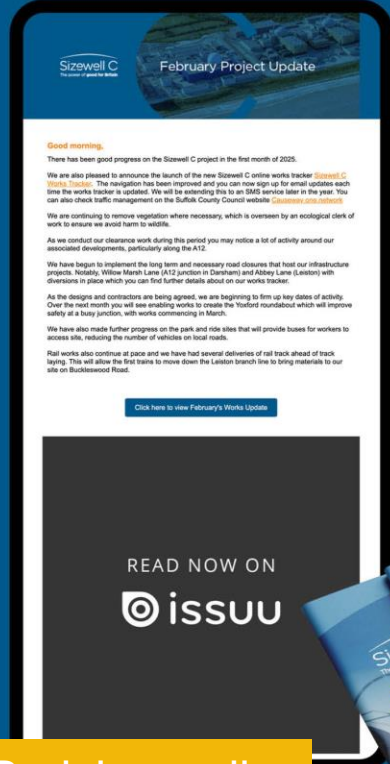
Works Tracker



Newsletter



Parish emailer



Parish magazines



Financial Close achieved

The Natural Environment Improvement Fund (NEIF) - £10m grant scheme has been launched to support environmental enhancement projects.

Annual Sustainability Report published - project on track to create 1,500 apprenticeships and increase local biodiversity by 19%

More than 400 British suppliers have already secured contracts worth £2.8 billion, including £126 million awarded in Suffolk

Local recruitment drive – over 400 people attended Leiston's jobs fair in November. The next Sizewell C careers fair will take place at the Nucleus Employability Hub at East Coast College in Lowestoft on 9 December.

COMMUNITY RELATIONS TEAM

The Sizewell C Community Relations Team is based in Leiston and dedicated to keeping local people informed, listened to, and supported throughout the project's construction. The team works closely with residents, parish councils, local businesses, and community organisations to share accurate information, respond promptly to questions or concerns, and minimise disruption wherever possible.

GET IN TOUCH

Call us, email us, message us, write to us, or simply call in and speak to us, we'd love to hear from you:

📍 Sizewell C Information Office, 48-50 High Street,
Leiston IP16 4EW

☎️ FREEPHONE 0800 197 6102*

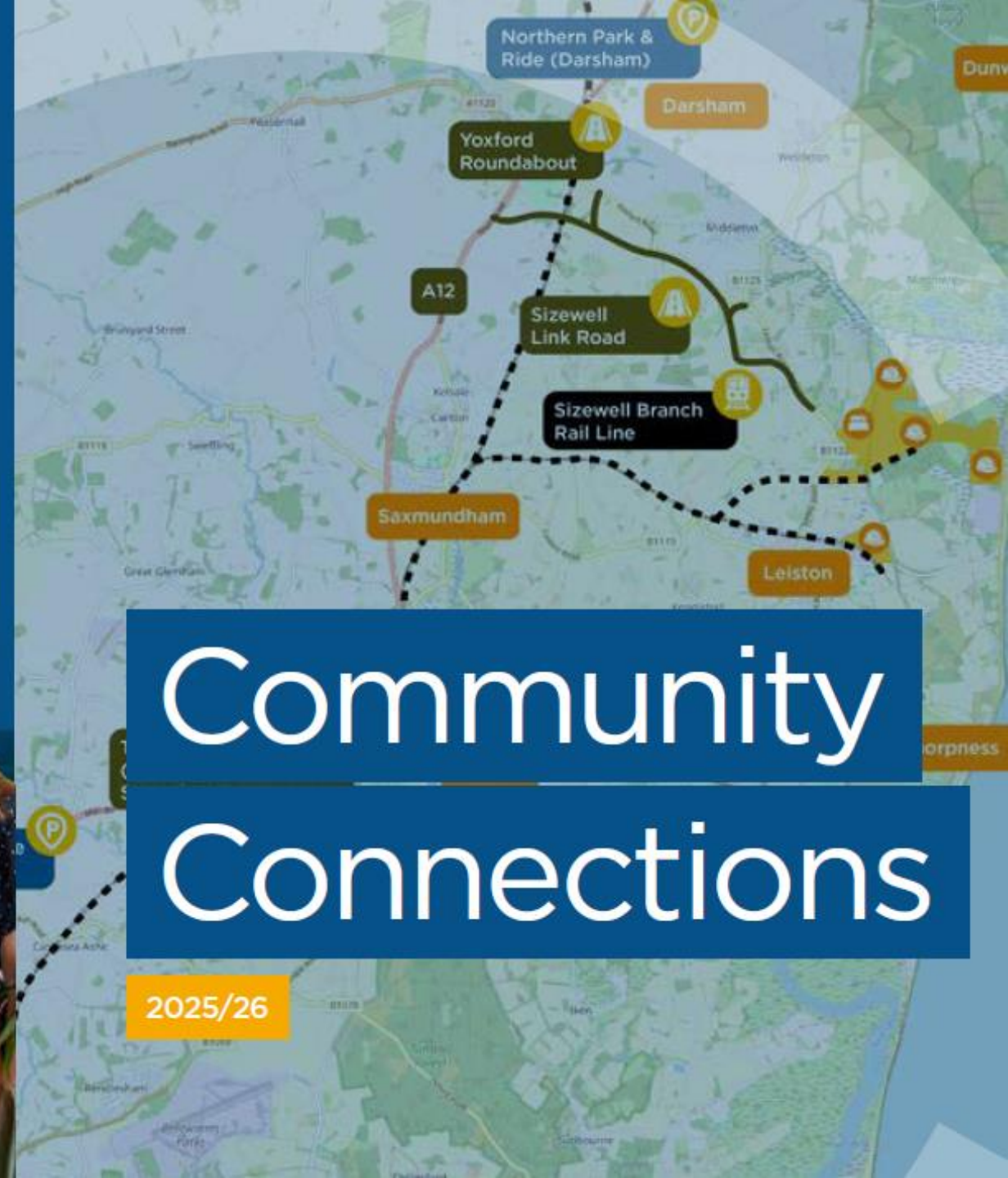
💻 www.sizewellc.com

✉️ @sizewellc

📄 szcworkstracker.co.uk

✉️ info@sizewellc.com

Sizewell C
COMMUNITY TEAM



Engagement Channels

- Weekly road works bulletin
- 6 Project newsletters
- 12 Community construction mailers
- 6 Town and Village newsletters
- SMS and subscription service
- Online Works Tracker
- Information office
- Community radio

PROJECT UPDATE

MARCH 2025

There has been good progress on the Sizewell C project in the first month of 2025.

We are also pleased to announce the launch of the new Sizewell C online works tracker. The navigation has been improved and you can now sign up for email updates each time the works tracker is updated. We will be extending this to an SMS service later in the year. You can also check traffic management on the Suffolk County Council website Causeway one.network.

We are continuing to remove vegetation where necessary, which is overseen by an ecological clerk of work to ensure we avoid harm to wildlife.

As we conduct our clearance work during this period you may notice a lot of activity around our associated developments, particularly along the A12.

We have begun to implement the long term and necessary road closures that host our infrastructure projects. Notably, Willow Marsh Lane (A12 junction in Darsham) and Abbey Lane (Leiston) with diversions in place which you can find further details of on our works tracker.

As the designs and contractors are being agreed, we are beginning to firm up key dates of activity. Over the next month you will see enabling works to create the Yoxford roundabout which will improve safety at a busy junction, with works commencing in March.

We have also made further progress on the park and ride sites that will provide buses for workers to access site, reducing the number of vehicles on local roads.

Rail works also continue at pace and we have had several deliveries of rail track ahead of track laying. This will allow the first trains to move down the Leiston branch line to bring materials to our site on Buckleswood Road.

FORUM SCHEDULE

All forum timings
18:30 - 20:30
(Arrival from 18:00)

Southern Transport Forum	Wednesday 12 March 2025	Stratford St Andrew Riverside Centre
Community Forum	Thursday 27 March 2025	High Lodge, Darsham
Main Development Site Forum	Wednesday 2 April 2025	Leiston Town Athletic Association
Northern Transport Forum	Wednesday 7 May 2025	Darsham Village Hall

For more information and for all 2025 forum dates visit sizewellc.com/community/forums

VISIT THE WORKS TRACKER SITE





Sizewell C Community Fund



- £23m over 10 years for East Suffolk projects
- The latest awards take the total distributed since the fund was launched just over a year ago to around £3m
- Supports social, economic & environmental wellbeing
- Small grants up to £10k/year; larger multi-year grants available
- Communities closest to Sizewell C areas of work
- Apply via Suffolk Community Foundation: www.suffolkcf.org.uk
- Next round:
 - Opens: 20 Oct 2025
 - Closes: 4 Jan 2026 (23:59)
 - Decisions: Early April 2026
- Following round closes: 29 Mar 2026
- Allow 12 weeks after closing for decisions

Drop in and see Annie and James at Leiston Library on Thursday 11th December between 13:30-16:30 to have any questions about the Fund answered and discuss your project ideas - no appointment necessary

Community and Corporate update 2026



Financial close has been achieved

Project activity will ramp up

Please encourage communities to stay tuned to the various channels of communication for updates

Please encourage your communities to work with Suffolk Community Foundation to explore community funding

Moving forward we will cease this update in the transport and main development site forums to allow the full meeting to be dedicated to construction updates

We will continue to deliver updates at the full community forum meetings

Please reach out to Richard and Zoe if you have any feedback

Item 4: Rail Update

Stephen Keighley and David Taylor (Network Rail)

East Suffolk line track renewal and bridge repairs



Line closures between Ipswich and Halesworth (Completed)

- Saturday 25 October to Sunday 2 November 2025 (9-days)
- Saturday 15 and Sunday 16 November
- Saturday 22 and Sunday 23 November
- Saturday 29 and Sunday 30 November

Planned:

- Saturday 6 and Sunday 7 December

Why?

- Track Renewal work in Woodbridge and Melton
- Bridge repairs across Rivers Alde and Deben

East Suffolk line track renewal and bridge repairs



The challenges we faced:

- Project coordination (internal)
- Community Engagement
- External Communication
- Diversion route planning
- Diversion route signage (advanced and during the work)
- Concerns over level crossing closures
- Business impact

Melton level crossing update



Lessons to take forward:

- Better communication with parish councils
- Clearer diversion route signage
- Continued coordination with 'blue light services'
- Wider notification with neighbours (where practical)



Melton level crossing update



Reports of uneven road surface post road closure

Crossing found to have uneven levels between track and road from incorrect installation of new drainage channels and settlement of the new track.

Remedial work planned on Saturday 6 and Sunday 7 December to correct the levels.

Crossing closure (and road closure) is required to reset the levels correctly and regrade the road/track interface.



River Deben and River Alde rail bridges



Engineering work included the repair and strengthening of two rail bridges over the Alde and Deben including:

- brickwork repairs to the abutments
- steel strengthening to bridge superstructure

Current status:

River Deben bridge – work completed – currently demobilising from site

River Alde bridge – repairs to brickwork planned for weekend 6-7 December with road closure in place.

Aiming to be demobilised from both sites by 12 December



Rail Delivery - Branchline Track

High output New Track Construction Machine (NTC)

- 3.7km new track installed along branchline (west end of route)



Ballast unloading



Tamping



Leiston West Junction (start of Green Rail Route)



Rail Delivery – TCA & GRR Mobilisation

TCA Sidings:

- Main rail compound established
- Deliveries of ballast & track panels



Green Rail Route:

- Deliveries of ballast, sleepers & track
- Earthworks nearly complete (Buckleswood area)

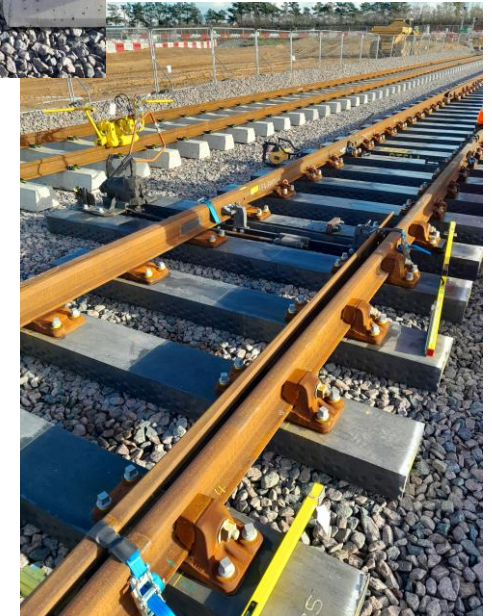


Rail Delivery – ACA works



Construction of ACA Sidings well progressed

- Ballast laying 90% complete
- Track installation 75% complete



Rail Delivery - Plan on a page

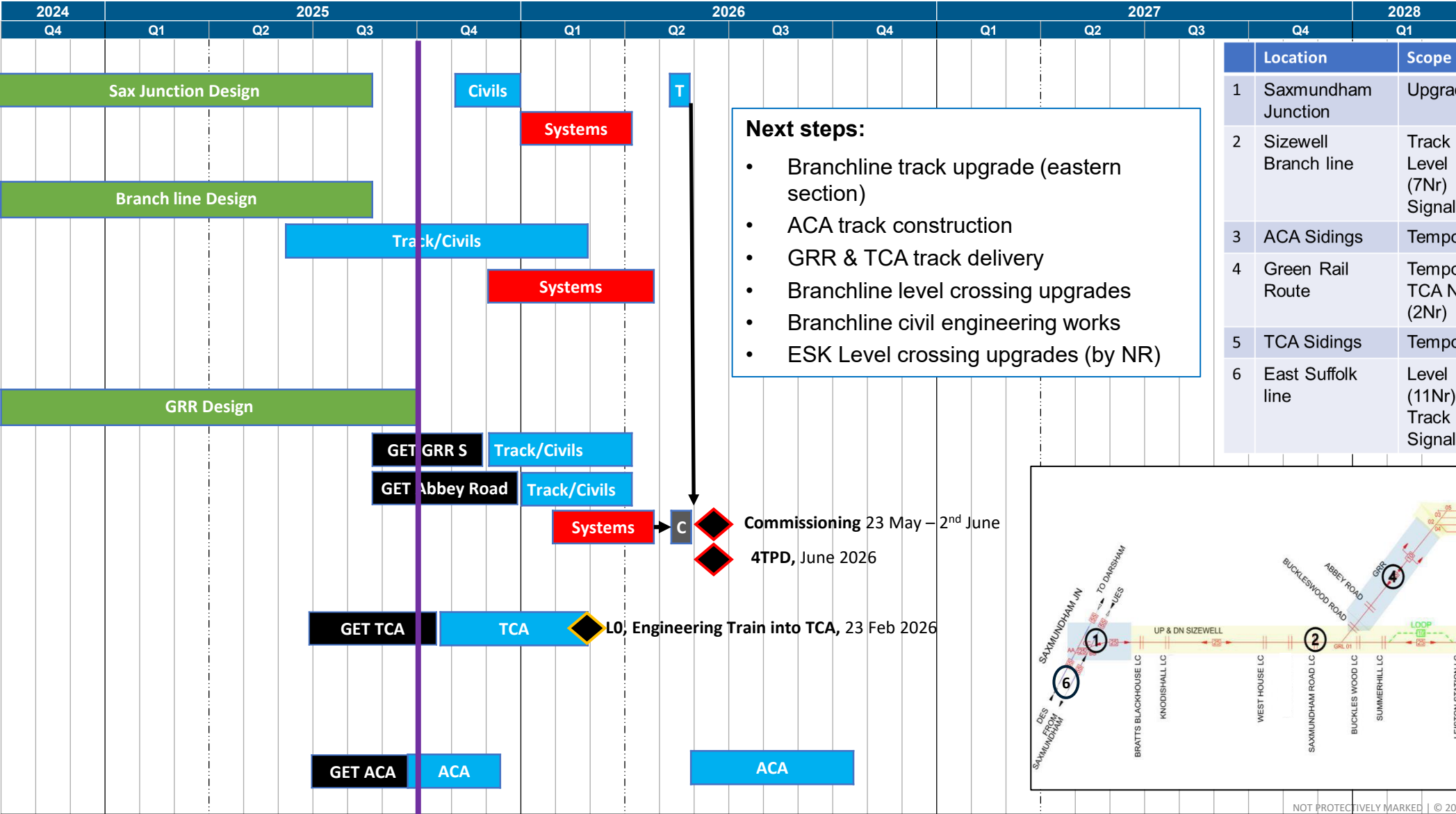
1. Sax Jct

2. Branch Line

4. GRR

5. TCA

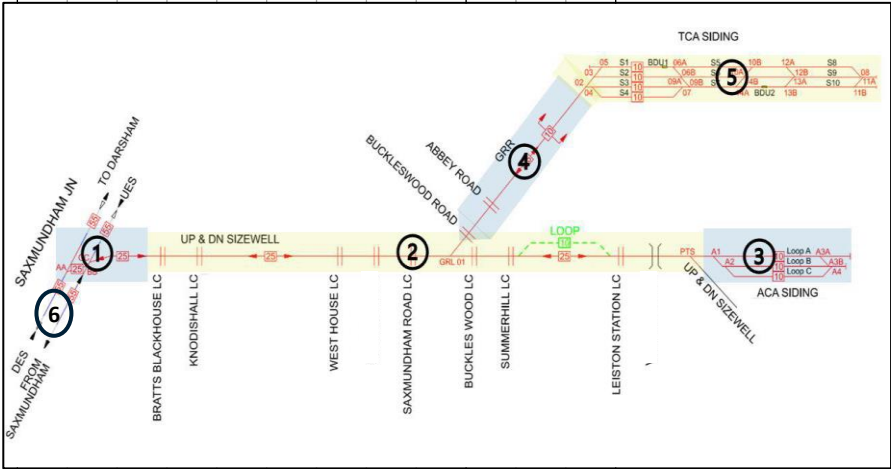
3. ACA



Next steps:

- Branchline track upgrade (eastern section)
- ACA track construction
- GRR & TCA track delivery
- Branchline level crossing upgrades
- Branchline civil engineering works
- ESK Level crossing upgrades (by NR)

	Location	Scope
1	Saxmundham Junction	Upgrade existing junction
2	Sizewell Branch line	Track upgrade Level crossing upgrade (7Nr) Signalling upgrade
3	ACA Sidings	Temporary sidings (3Nr)
4	Green Rail Route	Temporary connection to TCA New level crossings (2Nr)
5	TCA Sidings	Temporary sidings (8Nr)
6	East Suffolk line	Level Crossing upgrades (11Nr) Track upgrades Signalling upgrade





Southern Transport Forum NWR Update



Rail Delivery - ESK Level Crossings

Level Crossing	Start	Forecast Finish	Traffic Management
Brick Kiln	October 2025	December 2025	Min requirement 2 days for road resurfacing, planned at night and liaison with local resident.
Blackstock	December 2025	February 2026	Min requirement 2 days for URX, planned at night.
Red House Farm	November 2025	February 2026	Traffic management will be consulted on locally with landowners to minimise disruption.
Melton Sewage	March 2026	March 2026	No requirement
Dock Lane	March 2026	March 2026	No requirement
Ellingers	December 2025	January 2026	Traffic management will be consulted on locally with landowners to minimise disruption.
Kingston Farm	December 2025	March 2026	Traffic management will be consulted on locally with landowners to minimise disruption.

For the majority of the construction periods, these level crossings will be open to public use as normal. Where closures are in place they will be up to 15m either side of the affected level crossing.

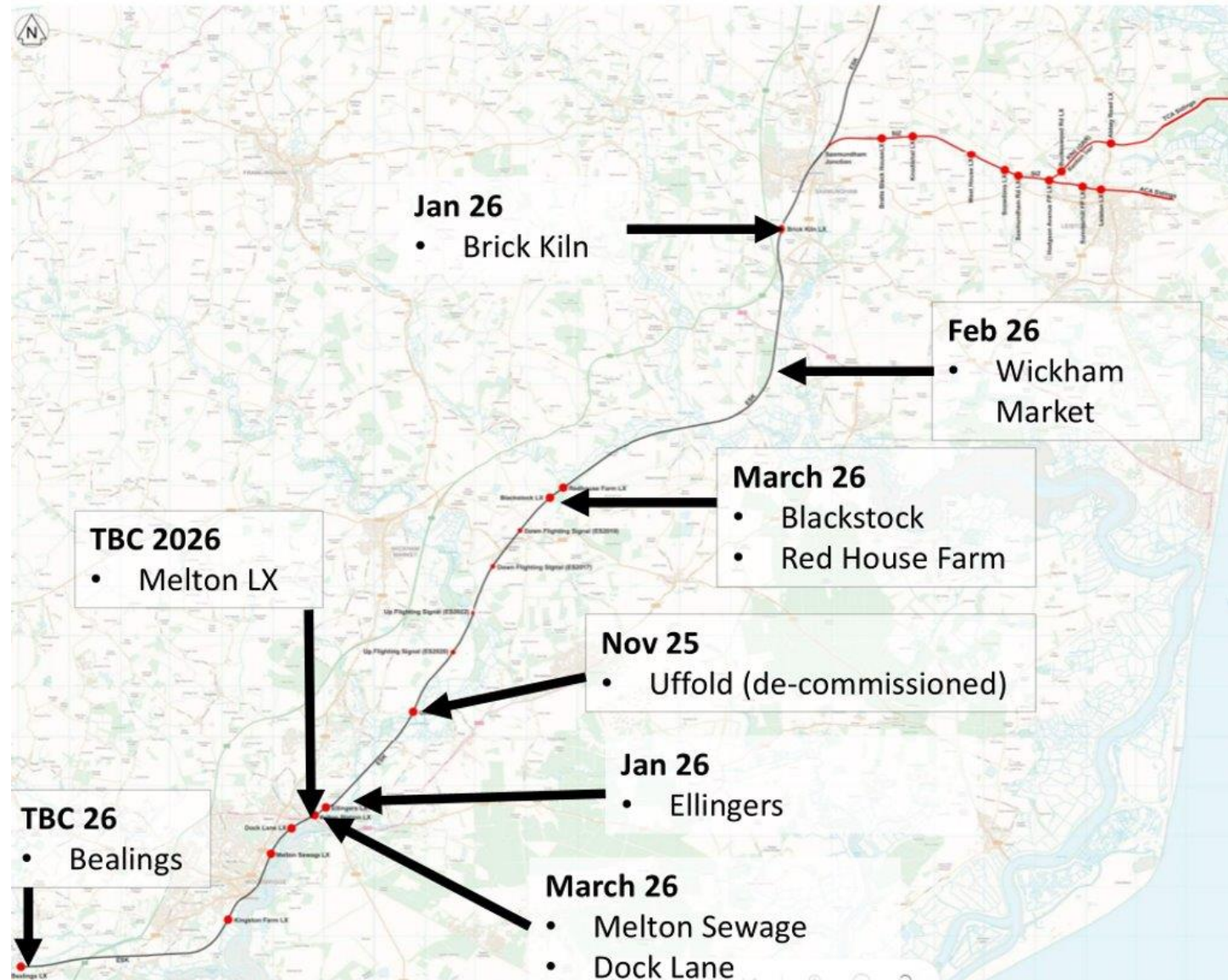
Rail Delivery - ESK Level Crossings

Level Crossing	Start	Forecast Finish	Traffic Management
Melton LX (Stage 1) Interim Safety Improvement	February 2026	May 2026	Traffic Management will be required and will be agreed upon in consultation with Suffolk County Council.
Melton LX (Stage 2) Full upgrade	July 2026	May 2027	Stage 2 works will include widening of the road, resurfacing, additional civils works, etc. and therefore road closures will be required. Due to the complexity of works day-time closures will be required however we will work with local councils and take on lessons learned from other work undertaken in the area to avoid significant disruption where possible.
Darsham	September 2026	Spring 2027	Traffic Management/road closures will be required, however Network Rail will plan to use nighttime closures wherever possible to minimise disruption. Day time closures will be required, however these will be kept to a minimum and consulted on locally well in advance of the works.



For the majority of the construction periods, these level crossings will be open to public use as normal. Where closures are in place they will be up to 15m either side of the affected level crossing.

Rail Delivery - ESK Level Crossings



Melton Level Crossing – Update

Upgrade works at Melton, for both the road and the level crossing, are currently forecast to commence from Summer 2026.

This forecast date is subject to change as a result of the complex interfaces (rail/road/utilities/3rd parties) required to agree a delivery strategy.

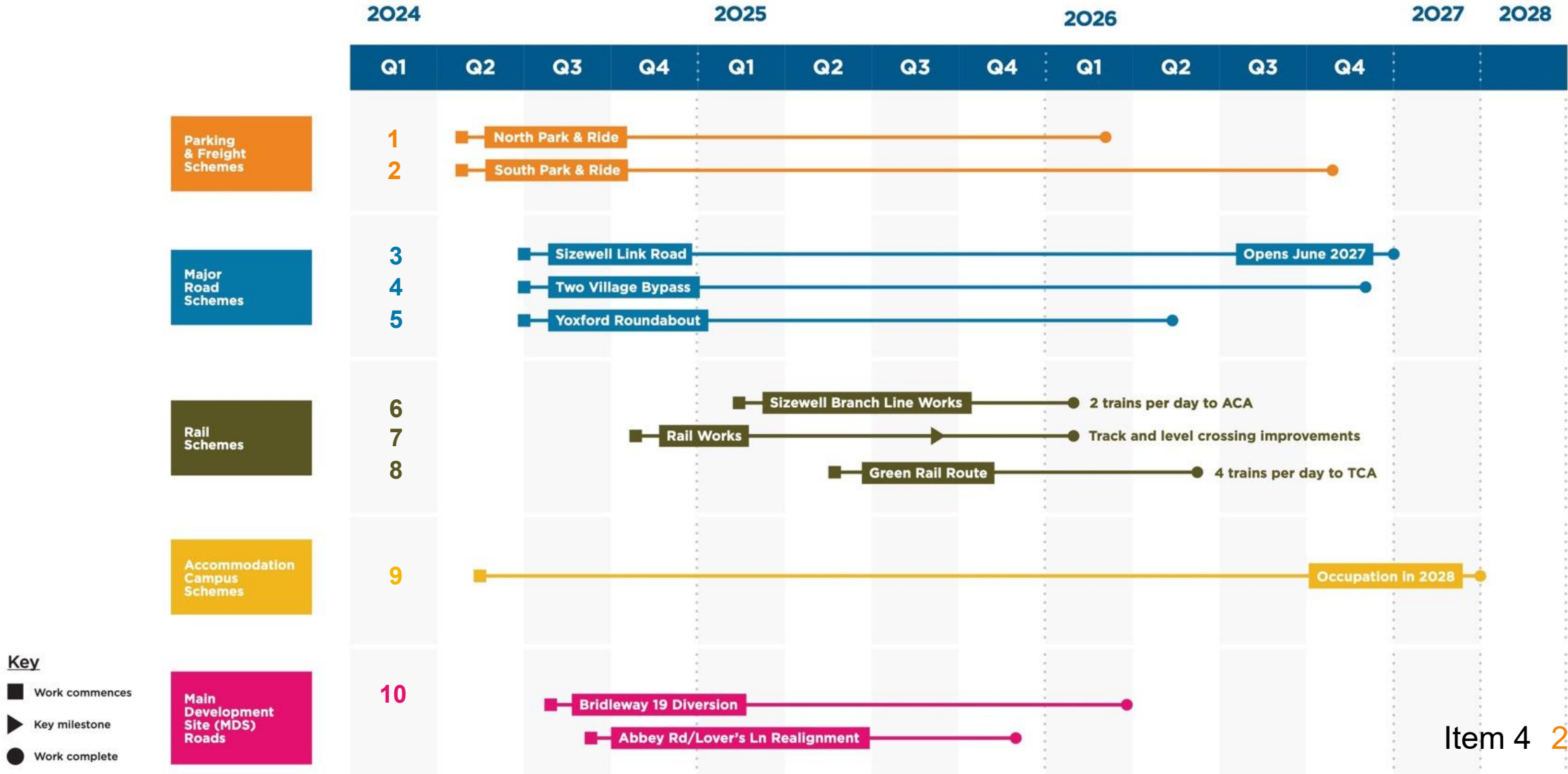
Greater detail will be published in advance for any periods of disruption to allow the local community to plan accordingly. We will also plan to hold “town hall” style drop-in sessions.



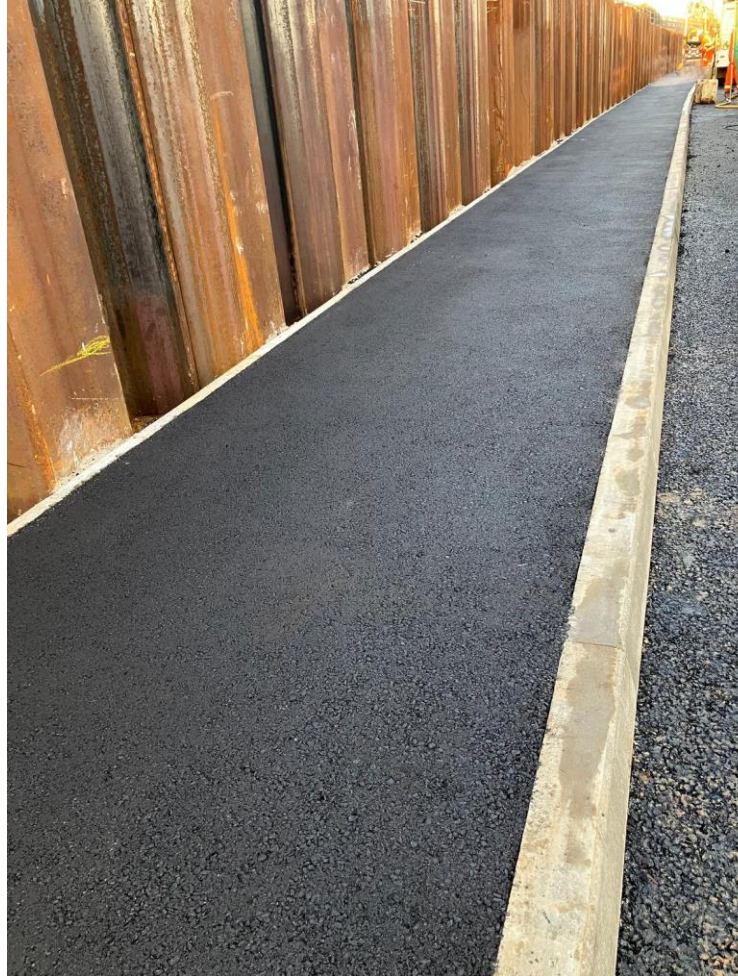
Item 4: Roads Update

David Peacop, David Seal, Jez Porter

Site Delivery Lookahead



A12 AIL layby Q4 2025



Scheme Overview

- Improvement of existing layby to support abnormal indivisible loads (AIL) during SZC construction.

Progress update

- Sheet piles installed.
- Kerbs and asphalt installed.
- Safety barrier and railing being installed.

Next steps

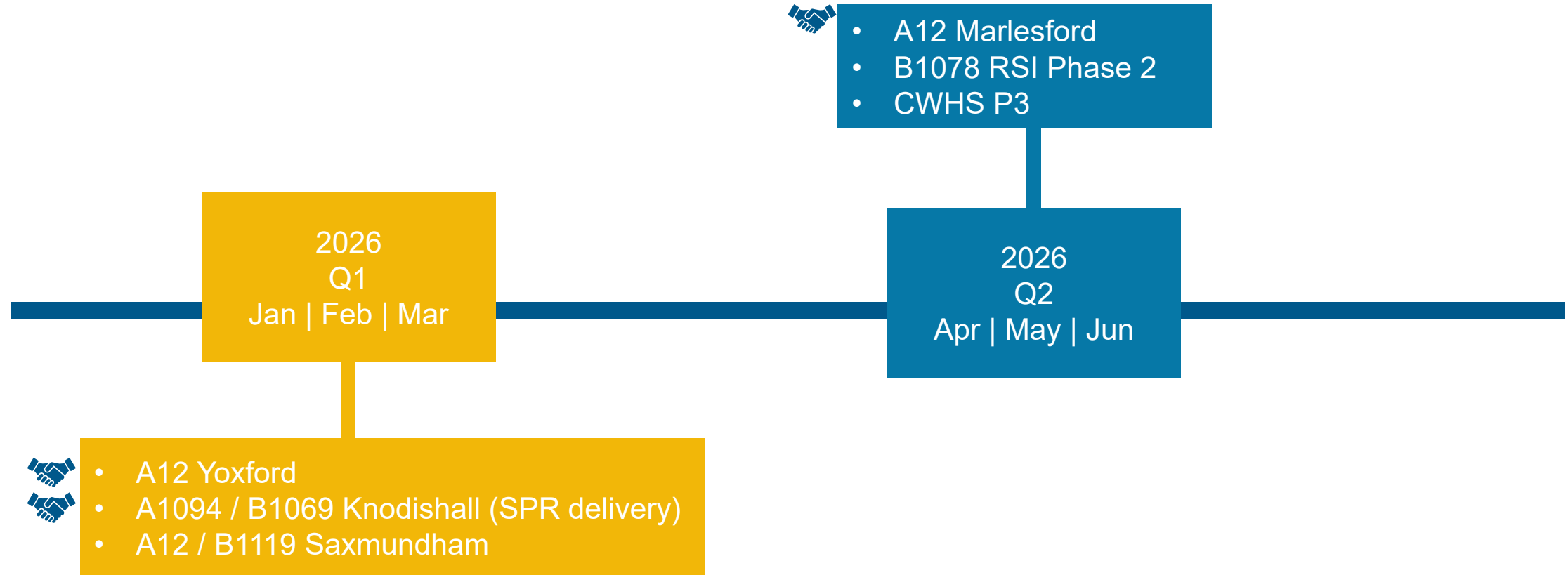
- Scheme complete 05.12.25.
- **A12 Traffic Management removed 05.12.25.**
- Road safety audit before operation of layby by Police.

Southern Park and Ride – current works



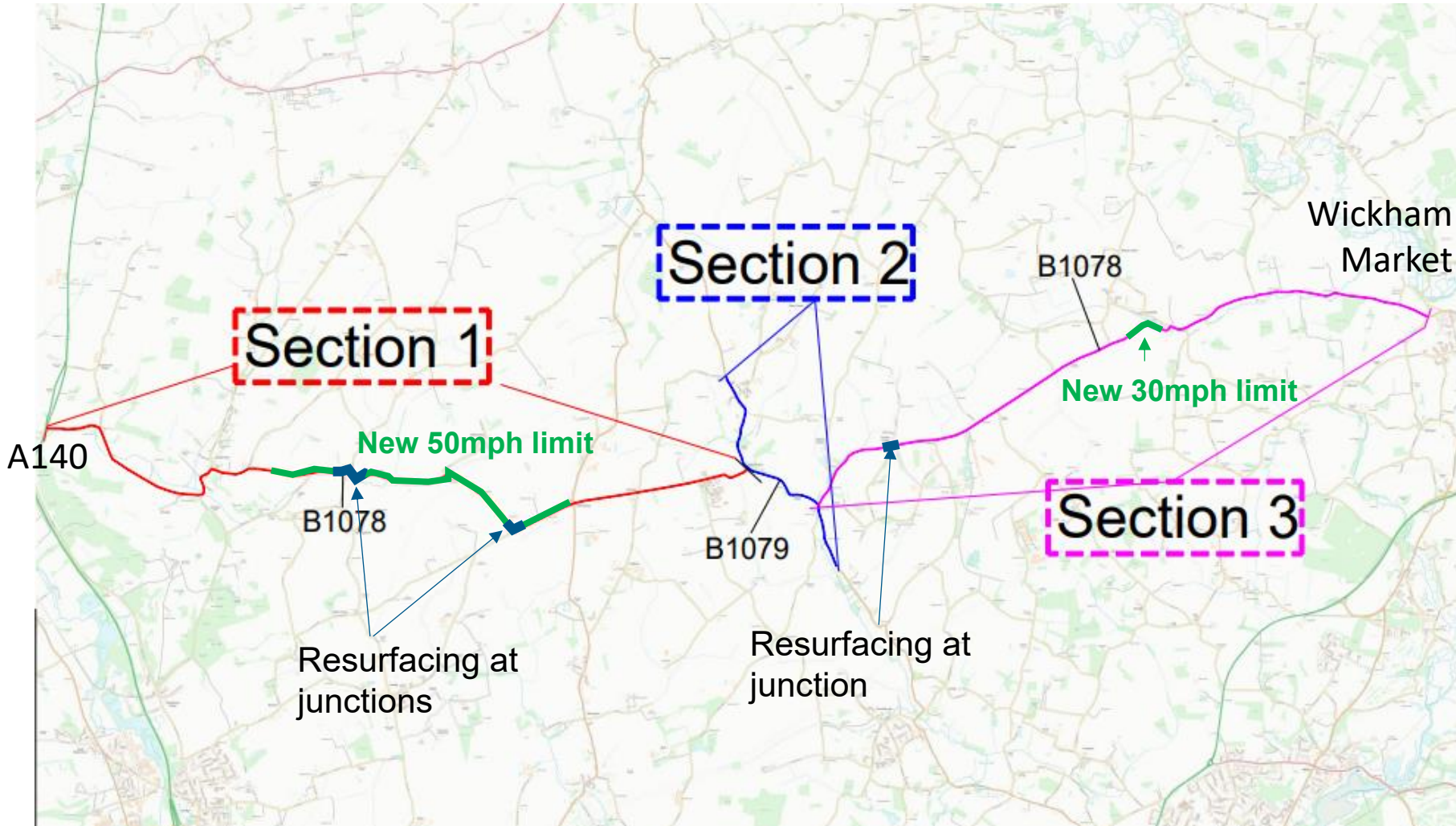
Local Roads South

Early 2026 Anticipated Commencement Dates



Collaboration with Scottish Power Renewables

B1078 Road Safety Improvements Phase 1 Q4 2025



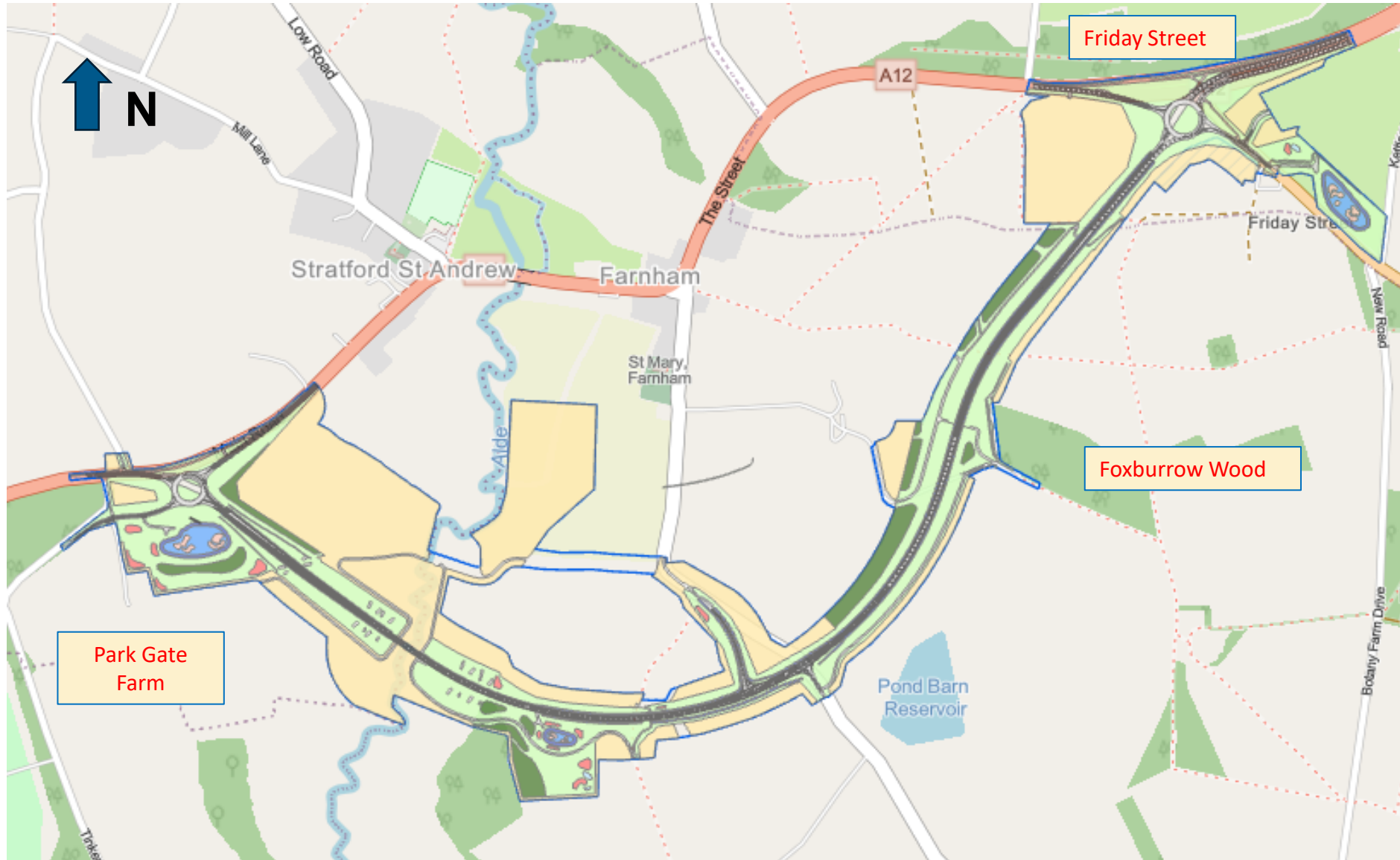
Scheme Overview

- Road safety improvements between the A140 and Wickham Market.
- Scheme commenced 15 November
- Completion end of December (before festive break).

B1078 Phase 2 2026

- New 40mph section east of Clopton.
- Wickham Market 30mph speed limit at Border Cot Lane.

Two Village Bypass – Q4 2025



- Technical Approval granted
- Archaeology Clearance works ongoing (Tinker Brook, TVB Central and Foxborrow Wood)
- Tree and Ecology clearance completed. Ongoing maintenance schedule implemented.
- Tinker Brook Lane Access works completed
- Friday St works started
- TVB early works started

Friday Street Roundabout Q4 2025

- Capping and Subbase stone is nearing completion on the Central Reservation
- Offline Kerbing works are now almost complete
- Open to Traffic late spring 2026
- Roundabout complete Summer 2026



Friday Street Traffic Management

- Working closely with SCC and Suffolk Constabulary
- Junction temporarily signalised to enable enhancements to be undertaken
- Coordination with Utilities works on A1094
- CCTV deployed to continuously monitor the junction
- Road Safety Audit in progress
- Vehicle Messaging Signs being deployed on A12 at Pakefield, Darsham, Wickham Market , Woodbridge and on A1094 nr Snape to provide advance notice of works.

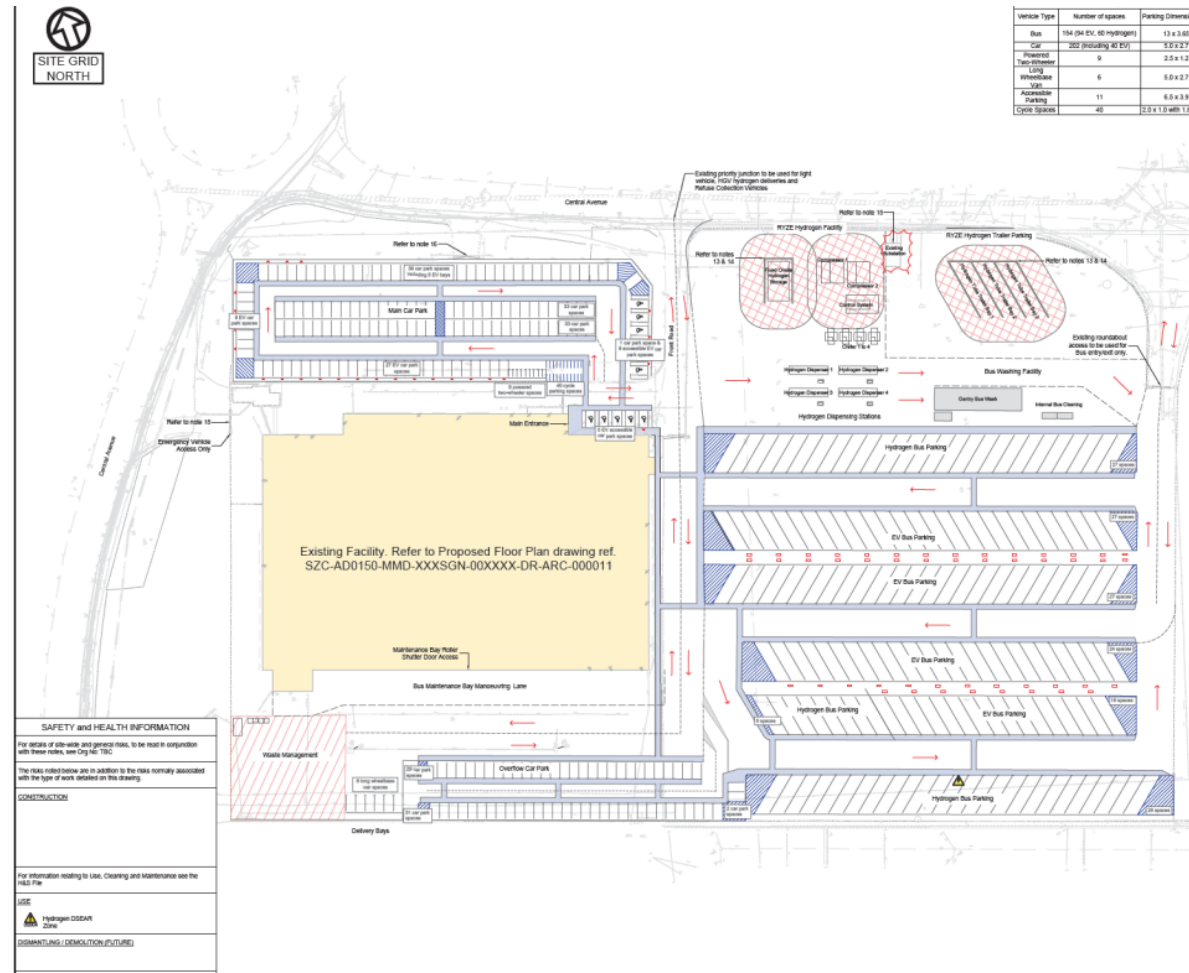


Road Closures

Dates	Location	Type of Closure	Scheme
15 Nov – 16 Dec	B1078	Nighttime	B1078 road safety scheme
05 December	A12	Full Closure (Northbound)	AIL Layby (removing cones)
Early Jan	Hill Farm Road	Full Closure	Two Village Bypass construction
26 Jan -13 Feb	A12	Nighttime (weekdays Northbound)	Friday Street Roundabout

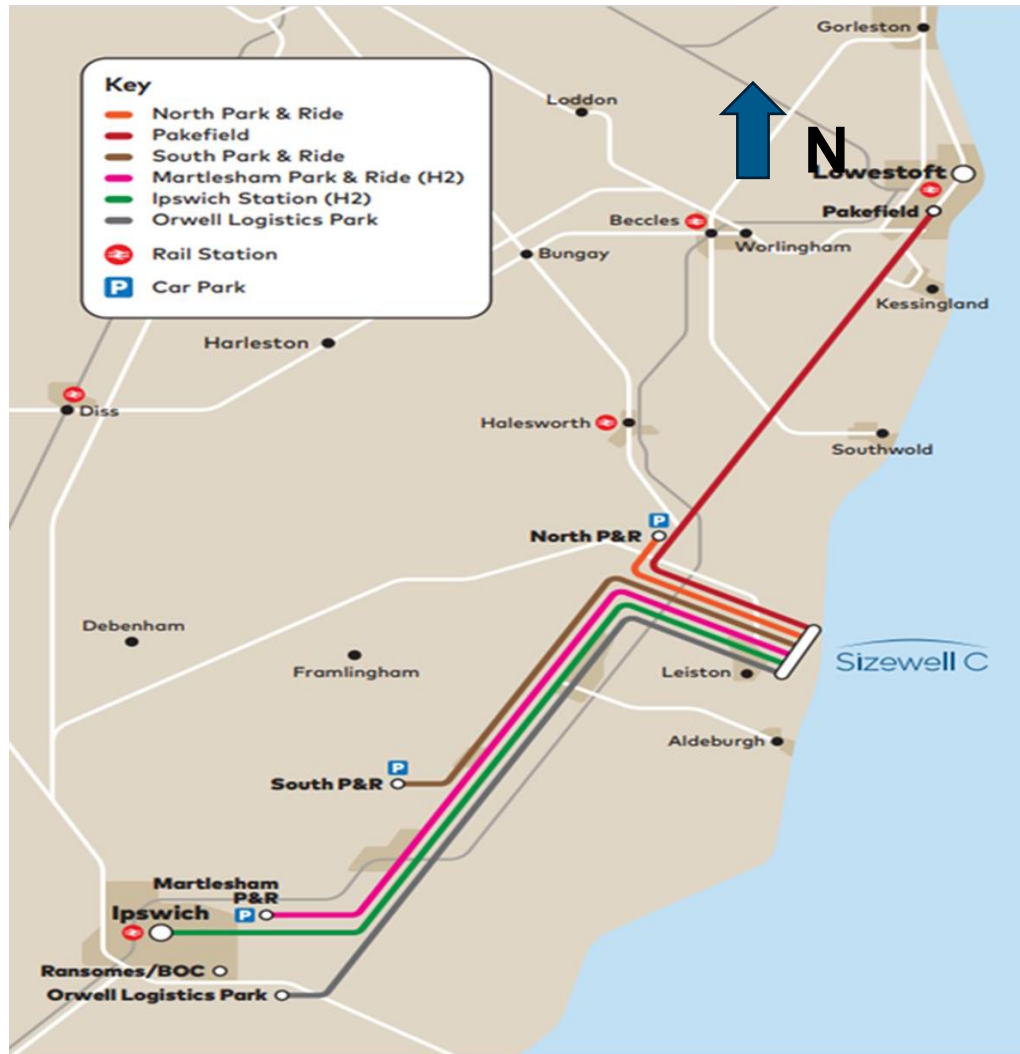
Sizewell C Bus Depot – Ransomes Ipswich

- SZC is proposing to use the land as a bus depot for a period of 10 years to support the power station that is being erected in Sizewell.
- Up to 160 bus parking spaces and 200 car parking spaces will be provided externally.
- Hydrogen buses will be refuelled externally. Electric buses will also be charged at the site. Wash facilities will also be provided.
- Buses will be maintained internally within the existing building.



All rights Reserved

Passenger Service Routes up and running



Passenger Services from

- Martlesham P&R
- Pakefield
- Orwell Logistics Park
- Ipswich Train Station
- Northern park and ride (Darsham)
- Southern park and ride (Wickham Market)
- Development of others is dependant on workforce location

Ransomes Bus Depot Engagement plans

- We will be holding exhibition events for the local community, week commencing 19 January, precise times and venues to be confirmed but in the Ravenswood area
- Ahead of the exhibition we will send letters
- Local business engagement
- We are discussing with the Ipswich Borough Council and East Suffolk Council
- Planning application to be submitted following these activities.

Orwell Logistics Hub



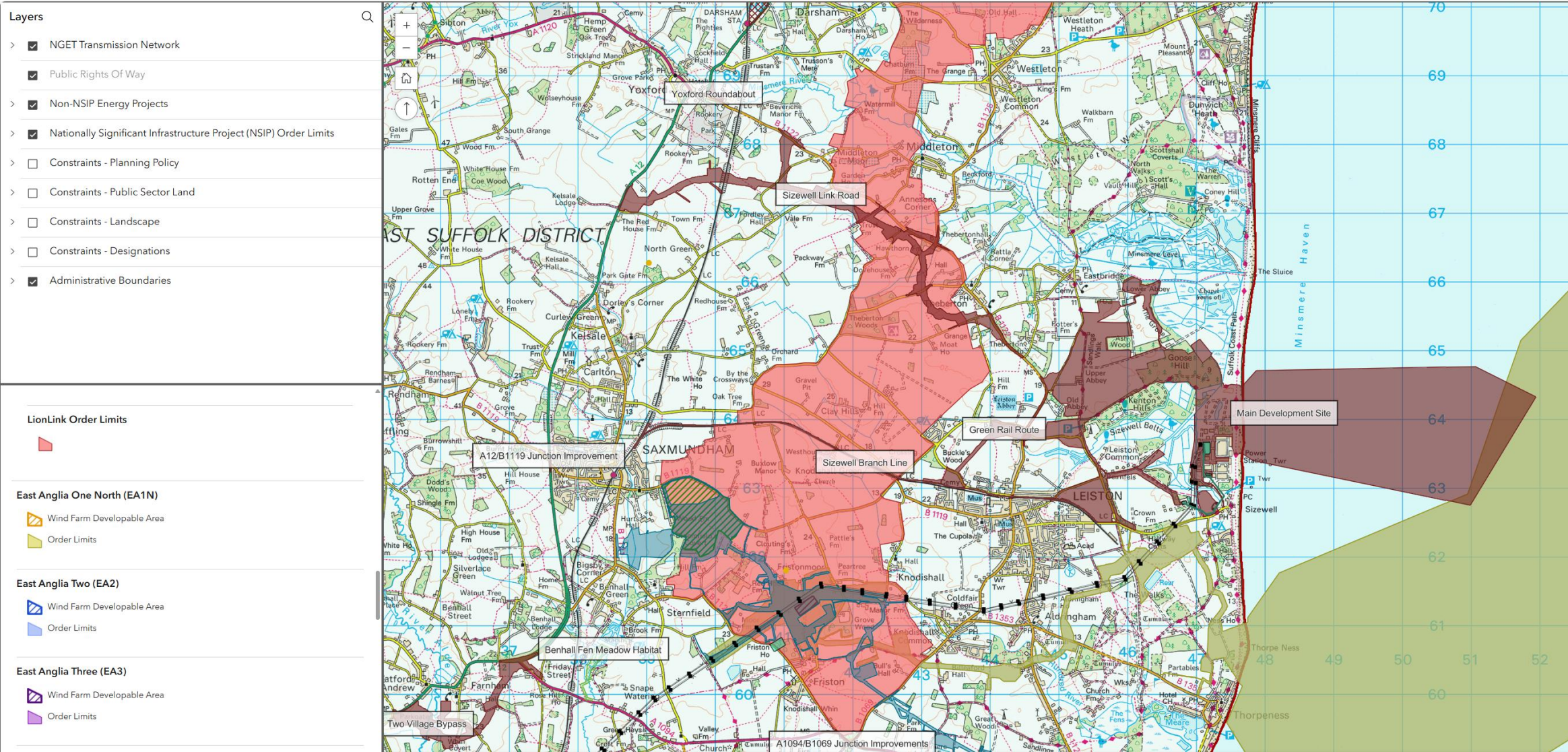
Signs in Vehicles

Sizewell C



For more information call:
0800 197 6102

Nationally Significant Infrastructure Projects (NCIP's)

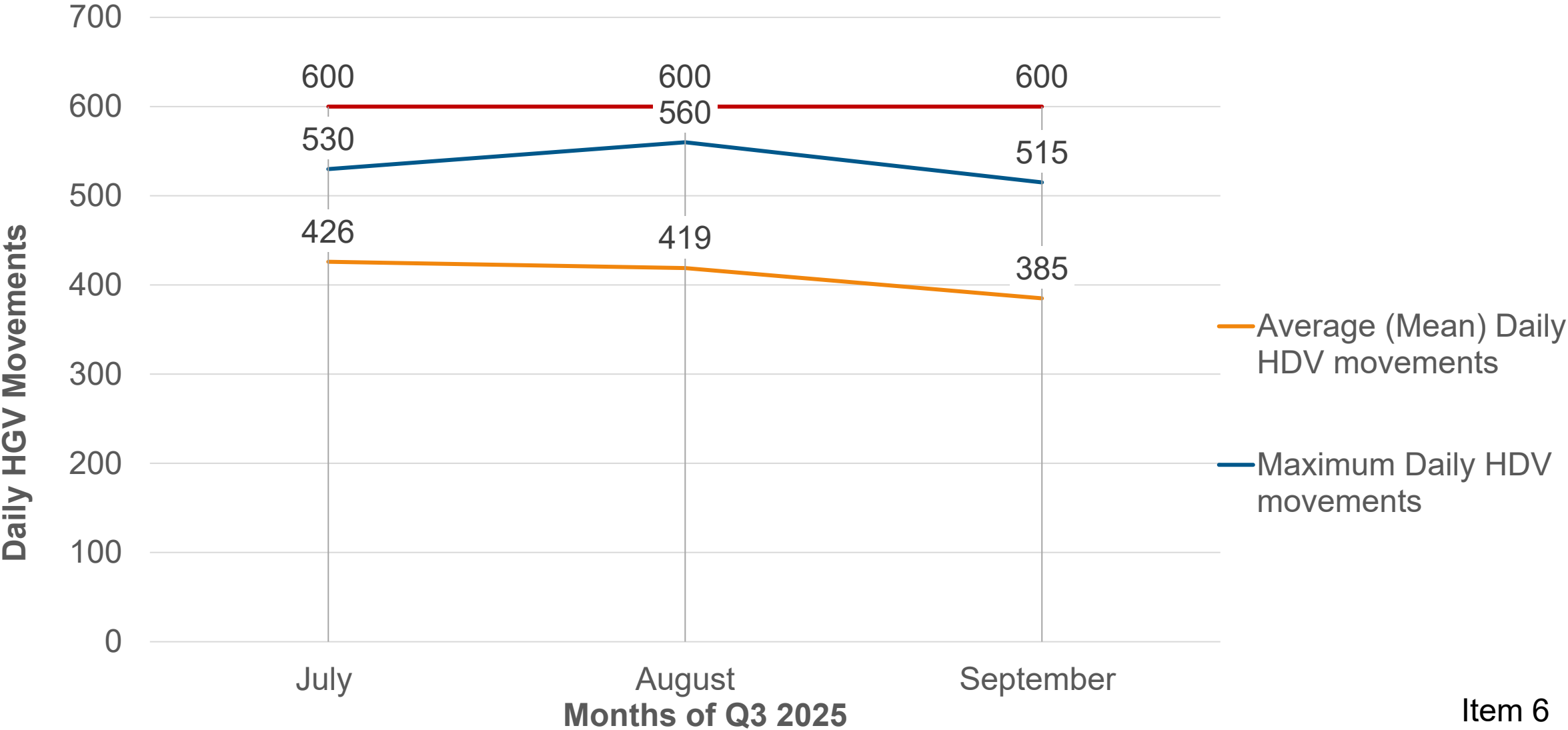


Item 5: Traffic and Transport

Rebecca Quigg, Transport Co-ordinator

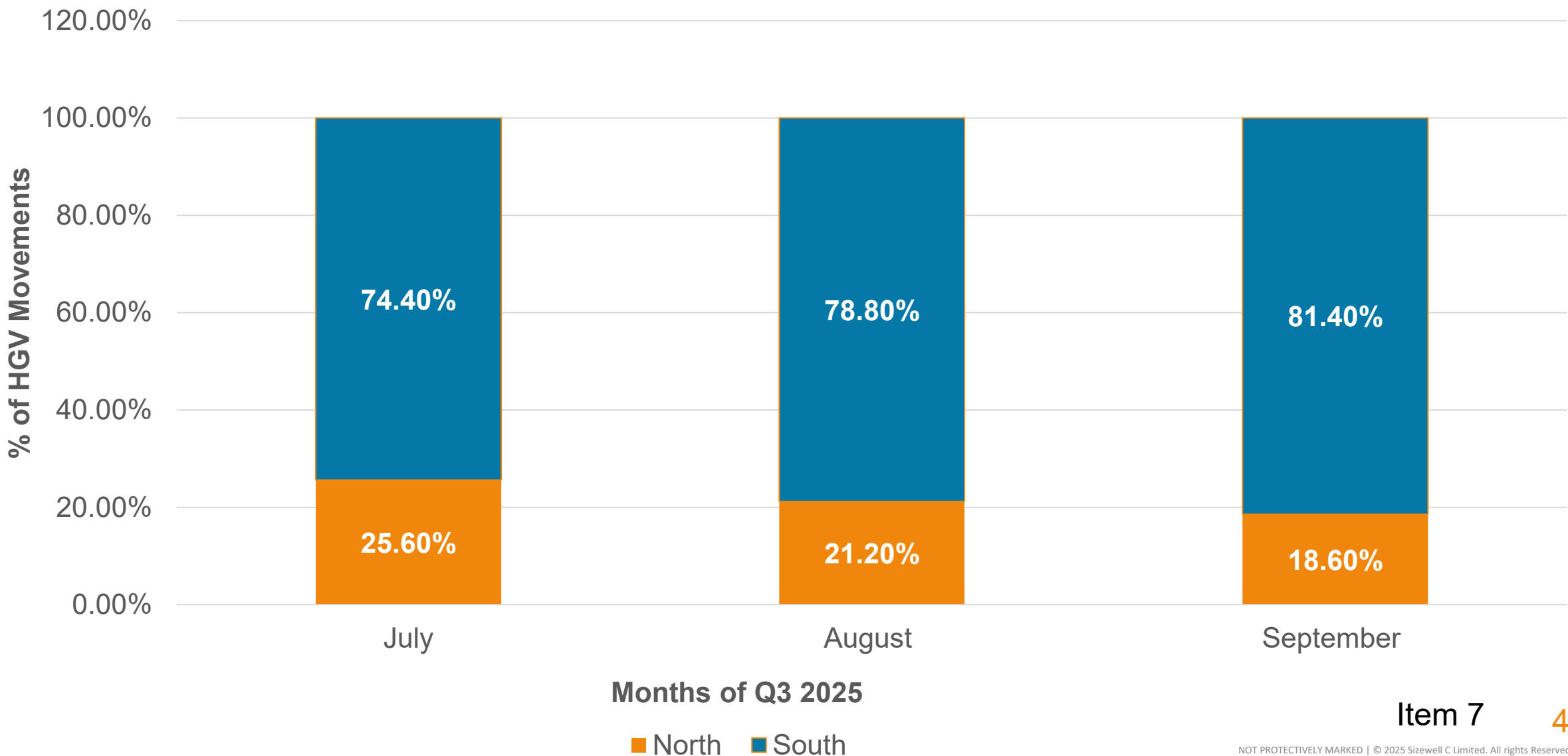
Transport Monitoring Reporting Q3 2025

Average (Mean) and Maximum Daily HGV Movements



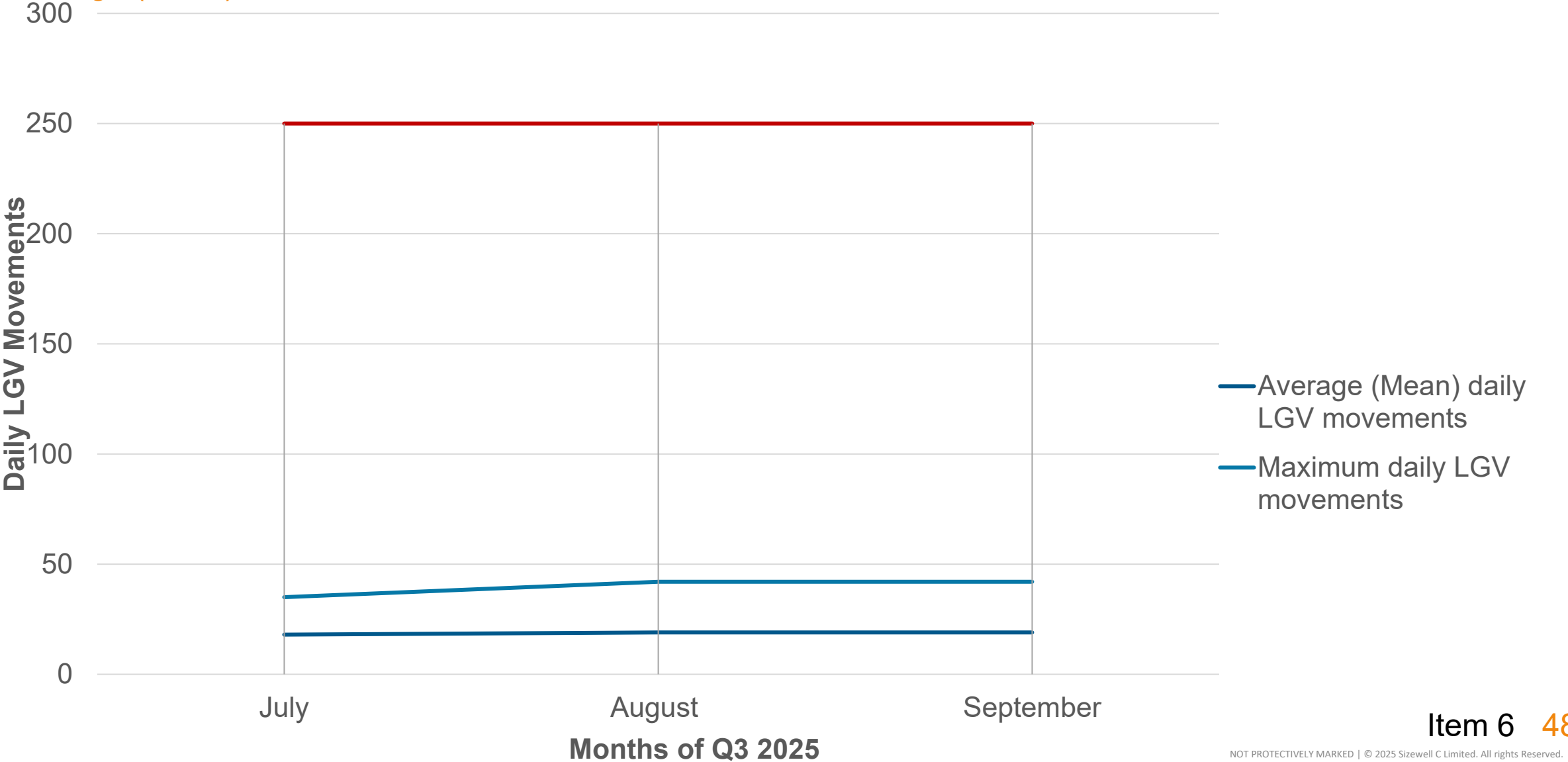
Transport Monitoring Reporting Q3 2025

Directional Split of HGV Movements



Transport Monitoring Reporting Q3 2025

Average (Mean) and Maximum LGV Movements



Q4 2025 TRG Summary

Key Headlines

Decisions

- Speed Indicator Device funding
- Permanent Monitoring Sites funding
- Agreement of HGV movements for rebar facility

Discussions

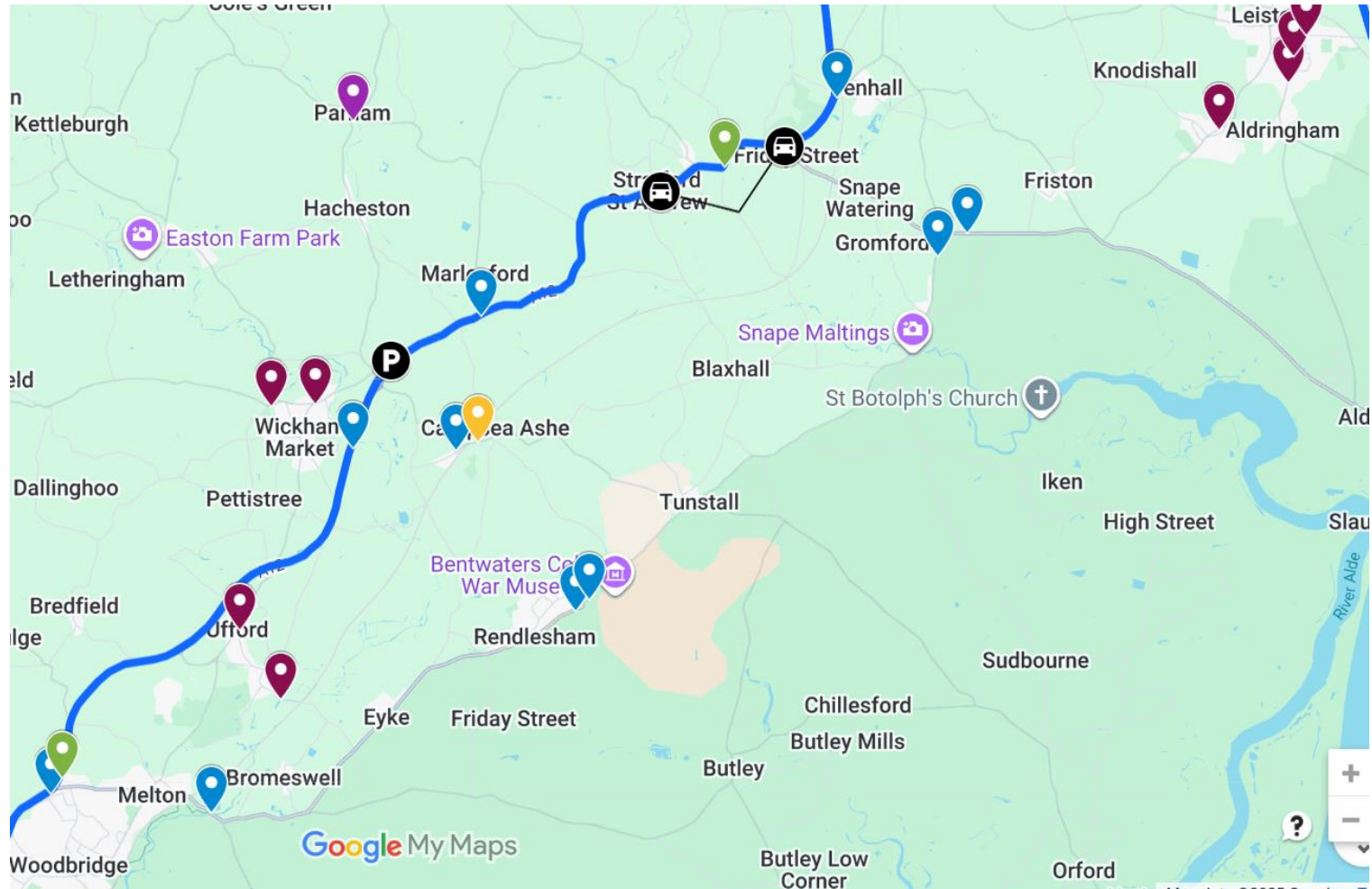
- Transport Monitoring Report
- Traffic Monitoring Report (August 2025)
- Routes for HGVs for Off Site works

Further Investigation

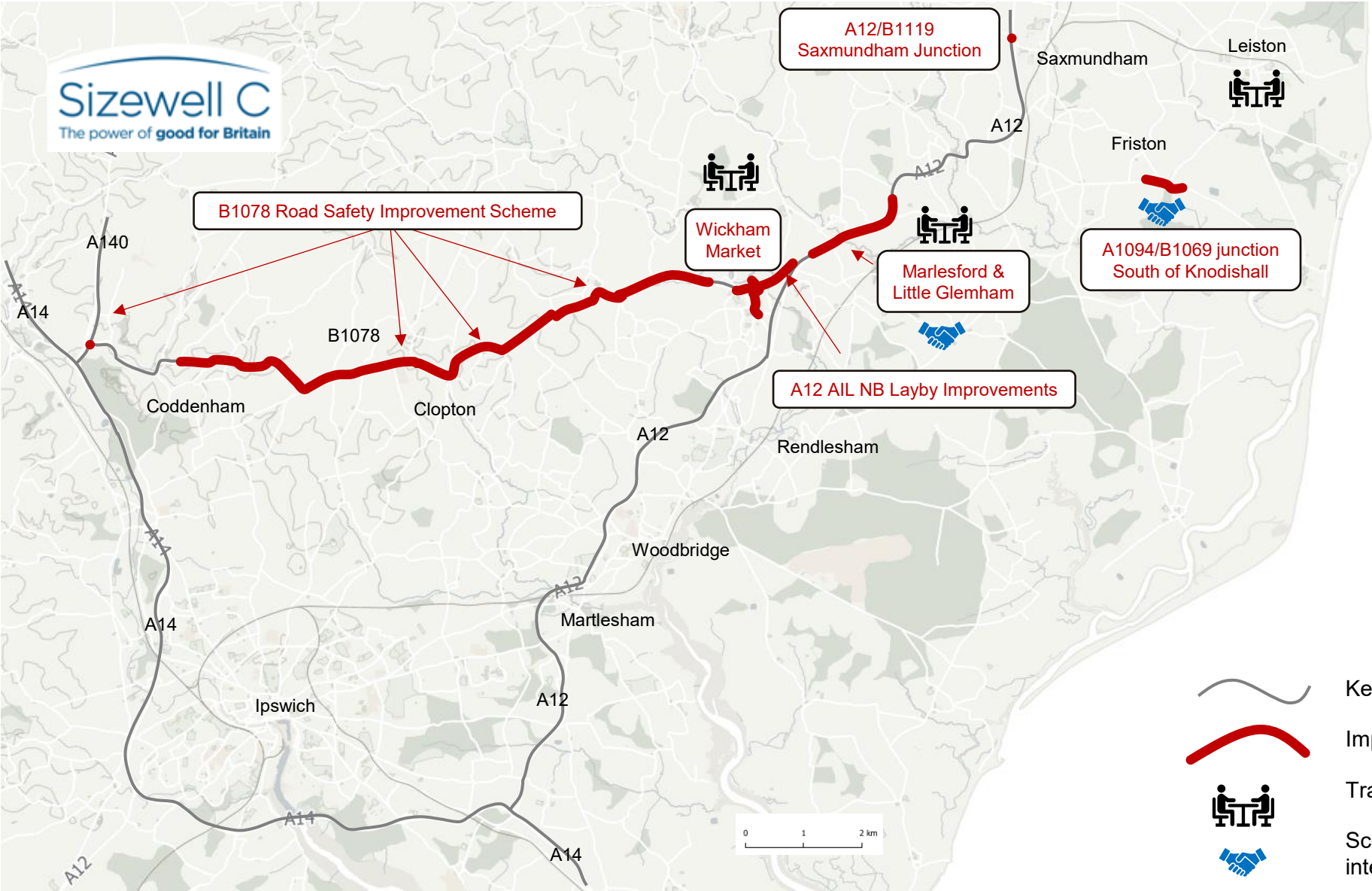
- HGV parking in lay bys
- FORS alternatives
- Speeding data for key sites

Traffic Monitoring 2025

- Next round of traffic monitoring took place at the end of October 2025, following summer holiday snapshot in August 2025
- TRG will consider full year of data in January 2026
- TRG is continuing to monitor biannual sites and are procuring 7 permanent monitoring sites
- Meeting held with traffic monitoring parishes in November 2025
- 1:1 meetings with parishes who request them to discuss their results



Local Roads – Southern Scheme Overview



Typical improvements

- New and enhanced pedestrian footways and crossings.
- New road surfacing.
- Village gateways.
- Safety improvements and side road visibility.
- Speed limits reductions.



Key road



Improvement scheme



Transport Working Group



Scottish Power Renewables scheme interface

Item 6: Q&A

Via Town and Parish Council Representatives

Chair

Melton Parish Council

Concern has been rising over recent weeks amongst Melton councillors and our residents about the impact of HGV traffic on the A12 and other local roads. This relates to poor driver behaviour including speeding, travelling in convoy, running very close to vehicles in front of them etc. HGVs have been seen parked overnight in laybys, quiet roads and even in residents' driveways. Whilst not all of these offending vehicles will be related to SCZ quite a number will be. We know that SCC and SZC are aware of the complaints and that they are rising. The son of our chair is a Long-Distance HGV driver and has advised us that the driving behaviour and driving pattern of each driver can be checked from the GPS tracker and tachograph on vehicles to highlight poor driving.

Q1: Can SZC commit with their HGV contractors to check lorry drivers GPS and tachograph reports to identify irresponsible behaviour?

Monitoring driver behaviour by the public would be greatly aided if SZC have clear signs on the front and back of their vehicles showing that they are on contract to SZC. Scottish Power have committed to this.

Despite the involvement of the public, it clearly remains the responsibility of SZC to manage and control behaviour of their haulage and other construction traffic and, for HGV in particular, the timing to site and routes used - not least as many HGVs have been seen on small roads rather than the A12 and parked in a number of rural laybys not suited or dedicated for that purpose.

County Councillor Alexander Nicoll and our chair Councillor Carol Gradwell have been engaged in lengthy discussions with Network Rail about the works needed to improve the railways to allow the SZC aggregate trains to run safely and more quietly along the length of the track. The road closure at the Melton Level Crossing and the subsequent traffic diversions caused chaos in the area and will continue to do so until all works are finished. One particular issue that we are still concerned about is the significant change in the level of the highway carriage over the crossing from the main carriageway of the A1152. There is a significant dip from the carriageway over the tracks which we are concerned about because it might cause an accident especially for those riding motorbikes or bicycles. On a site visit with the SCC area engineer on a wet day in November there was significant ponding on the railway station side of the level crossing. This may have been due to a blocked kerb drain and/or the fact that where the new road surface for the crossing meets the old surface of Wilford Bridge Road there is not a smooth transition but an indentation where the rainwater collects.

Q2: Will SZC/Network Rail commit to examining with SCC the existing highway drain, clearly not working, and review the road levels from Wilford Bridge Road onto the level Crossing which is now a highway hazard particularly for cyclists and motorbikes.

Saxmundham Town Council

Q1: Now that the opening of the Park and Ride facilities are imminent, could Sizewell C please explain the parking arrangements for workers who live locally, for example, Saxmundham and our neighbouring parishes?

Will they be expected to drive to Wickham Market or Darsham or will parking be available on site?

Q2: The council is pleased to note that buses call into Saxmundham station, how will Sizewell C ensure that the station does not become a park and ride location, with workers 'fly-parking' in neighbouring streets to avoid daily parking charges?

Woodbridge Town Council

Q1: Woodbridge residents are becoming increasingly annoyed and concerned by unacceptable driver behaviour by some Sizewell C HGVs, in particular, but no limited to, tipper trucks along the 40mph southbound carriageway from the A1152 to the B1079 roundabouts. Residents are seeking speed cameras on that section of road. A video placed on the Next door demonstrated the excessive speed and tailgating and was forwarded to you.

how many HGV drivers have been warned about their behaviour?

how many have been banned from working for Sizewell C over the last 2 months?

what on site speed monitoring is being undertaken by the compliance team or police on the 40mph section of the A12 Woodbridge Bypass and how many have been stopped for speeding and/or tailgating?

Q2: Some Woodbridge residents who reside very close to the railway suffered severe impact from noise during the 24 hour/day line improvement enabling work through Woodbridge. Their properties, although shown in your noise mitigation documentation as requiring noise insulation, had not even been contacted about such insulation work. Why have these works not been instigated and progressed?

Ufford Parish Council

Q1: There have been multiple incorrect or missing signage, unclear diversion route and confused timing issues from Network Rail's recent level crossing and bridge upgrades in the area. I have heard similar comments about some of the highway projects sponsored by SZC. Will SZC commit to reviewing these and the lessons learned with their partners and multiple subcontractors to avoid further disruption and traffic chaos in the next phase of highway works and rail closures coming in 2026?

Marlesford Parish Council

Q1: A12 mitigation works will be carried out in Marlesford and Little Glemham in Half 1 2026. Can SZC explain what signage they will deploy to discourage “rat running” through the minor roads adjacent to the A12, by drivers trying to avoid the A12 works?

Campsea Ashe Parish Council

The recent LevelX closure in Melton resulted in road diversions for all traffic heading over Wilford Bridge being made via the B1078 Lower Hacheston, Campsea Ashe and Tunstall.

The result of this was repeated gridlock in various locations, as the B1078 (and other lanes) were not capable of accommodating 2-way traffic.

Several incidents were reported of damages to property and vehicles.

In view of future closure of the A12 north of Wickham, that route will – as we all know – become the logical alternative route for many travellers.

Q1 Can SzC please explain plans for such future closures – what are the actual contingency plans? If the B1078 will not be subjected to an official diversion, we look for by SzC/TRG to assure our residents that the B1078 will not be subjected to this level of unmanageable traffic volumes.

Q2 We hope SzC will manage this to avoid a repeat situation and we ask whether SzC going to discuss plans in advance with affected Parishes?

Cllr Sally Noble East Suffolk Council

Sizewell C has responded positively to requests for SZC contractors vehicles not to park in some laybys. But parking continues to happen where drivers need tacho breaks or vehicles are working on other projects and are outside SZC control.

What is SZC doing about:

Q1. Providing designated areas for driver tacho and welfare breaks

Q2. What efforts are being made by SZC and SCC to liaise with other energy projects to coordinate on HGV driver break areas?

Forum Schedule

2026

Our forums are open to local people to attend as observers – and they're another great way for you to hear about our latest work.

All forum timings: 18:00–20:00 (arrival from 17:45)

Leiston Town Athletic Association,
Victory Road, Leiston, IP16 4DQ

High Lodge Darsham,
Haw Wood, Hinton, Nr Darsham, IP17 3QT

Stratford St Andrew Riverside Centre,
6 Great Glemham Road, Stratford St Andrew, Saxmundham, IP17 1LL

Woodbridge Rugby Club,
Hatchley Barn, Orford Road, Bromeswell, Woodbridge IP12 2PP

Main Development Site Forum	Wednesday 14 January 2026	Leiston Town Athletic Association
Northern Transport Forum	Wednesday 4 February 2026	High Lodge Darsham
Southern Transport Forum	Wednesday 4 March 2026	Stratford St Andrew Riverside Centre
Community Forum	Thursday 19 March 2026	Woodbridge Rugby Club
Main Development Site Forum	Wednesday 15 April 2026	Leiston Town Athletic Association
Northern Transport Forum	Wednesday 6 May 2026	High Lodge Darsham
Southern Transport Forum	Wednesday 3 June 2026	Stratford St Andrew Riverside Centre
Main Development Site Forum	Wednesday 8 July 2026	Leiston Town Athletic Association
Northern Transport Forum	Wednesday 5 August 2026	High Lodge Darsham
Southern Transport Forum	Wednesday 2 September 2026	Stratford St Andrew Riverside Centre
Main Development Site Forum	Wednesday 7 October 2026	Leiston Town Athletic Association
Community Forum	Thursday 22 October 2026	Sizewell Visitors Centre
Northern Transport Forum	Wednesday 4 November 2026	High Lodge Darsham
Southern Transport Forum	Wednesday 2 December 2026	Stratford St Andrew Riverside Centre



Thank you

