



## Worlingham Neighbourhood Plan Referendum

# Information Statement

Town and Country Planning, England | Town and Country Planning (Referendums) Regulations 2012 (as amended)

*This document was updated on 27/10/22 to update the arrangements for viewing the documents at the Marina Centre, Lowestoft*

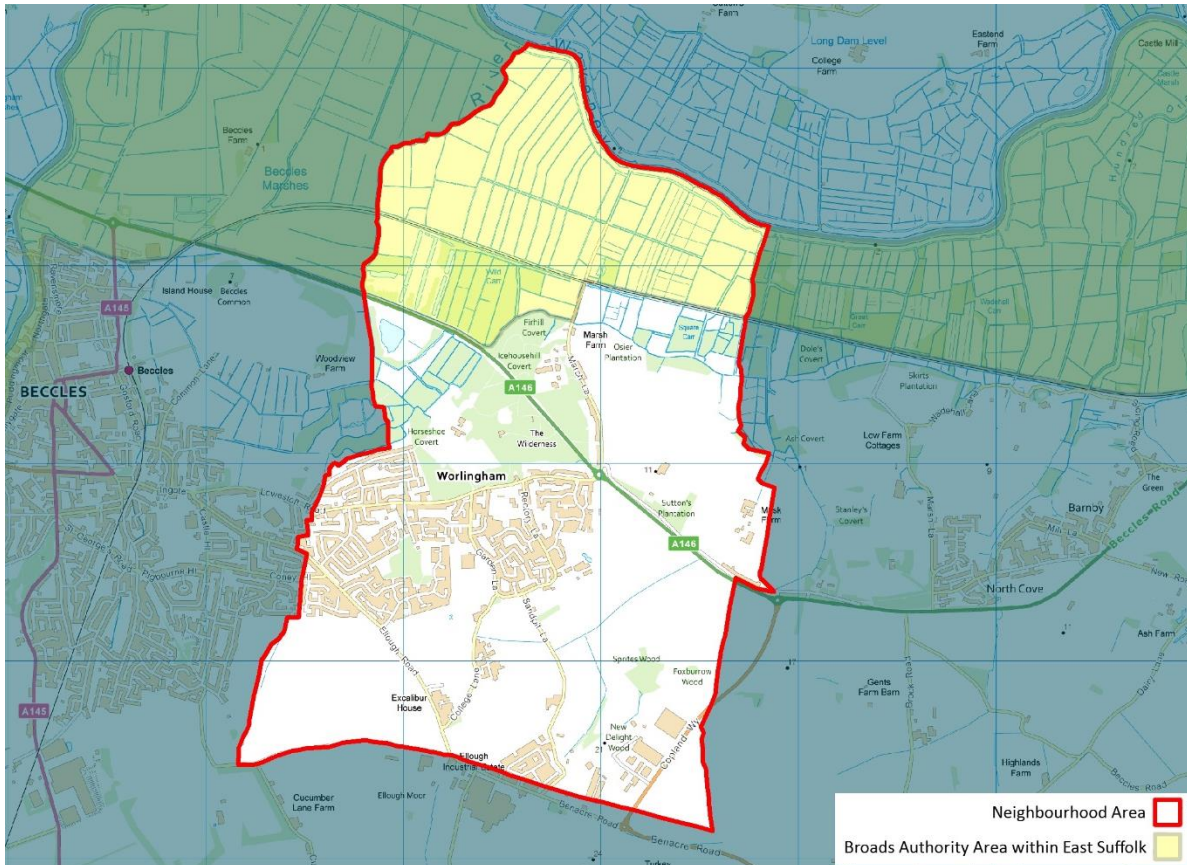
### **Referendum Date: Thursday 17th November 2022**

A Neighbourhood Planning Referendum will be held for the Worlingham Neighbourhood Plan on **17th November 2022**. The question asked in the referendum will be:

*Do you want the Broads Authority and East Suffolk Council to use the Neighbourhood Plan for Worlingham to help them decide planning applications in the neighbourhood area?*

## The Referendum Area

The referendum area is the same as the neighbourhood plan area, which was designated by (former) Waveney District Council on 8<sup>th</sup> February 2017.



*(c) Crown Copyright and database rights 2022 Ordnance Survey 100019684*

A person is entitled to vote in the referendum on Thursday 17th November 2022 if:

- He or she is entitled to vote in a local government election in the referendum area; and,
- His or her qualifying address for the election is in the referendum area.

The referendum expenses limit for this referendum is £2,543.29. This limit has been calculated based on the number of people entitled to vote in the referendum being 2954.

The referendum will be conducted in accordance with procedures similar to those used at local Government Elections.

The Specified Documents, which are required to be made available through the referendum period, are:

- Worlingham Neighbourhood Plan 2021-2036 (Referendum Version, July 2022);
- The report of the independent examiner;
- A summary of representations submitted to the independent examiner;
- A statement by East Suffolk Council that the draft plan meets the basic conditions and Convention rights (Decision Statement);
- A statement that sets out general information as to town and country planning including neighbourhood planning and the referendum (this Information for voters); and,
- A statement containing basic information about the referendum (Information Statement).

These documents can be viewed online at:

<https://www.eastsuffolk.gov.uk/planning/neighbourhood-planning/neighbourhood-plans-in-the-area/worlingham-neighbourhood-area/>

The Specified Documents are also available to view at:

Beccles Library  
Blyburgate  
Beccles  
NR34 9TB

Or

Customer Service  
Marina Centre  
Marina  
Lowestoft  
NR32 1HH (during opening hours)

Please note: from 31<sup>st</sup> October 2022 the Marina Centre will be temporarily closed for refurbishment. The work is expected to take three weeks. During this period the Specified Documents will be available to view at: Lowestoft Library, Clapham Road South, Lowestoft NR32 1DR.

Should you have any difficulties in accessing copies of the document you can contact us on 01394 444557 or email [planningpolicy@eastsuffolk.gov.uk](mailto:planningpolicy@eastsuffolk.gov.uk) and we will aim to assist you.