



# **Habitats Regulations Assessment Screening Statement**

**Draft Historic Environment  
Supplementary Planning Document**

December 2020

## Contents

1. Introduction .....	1
2. Protected sites covered by this report .....	3
3. Historic Environment Supplementary Planning Document .....	4
4. Other Plans and Projects .....	5
5. Assessment of likely significant effects of the Draft Historic Environment Supplementary Planning Document (SPD) on European protected sites .....	6
7. Summary and conclusions .....	11
Appendix 1: Sources of background information .....	12
Appendix 2: Locations of European protected sites .....	13
European protected sites within 20km of the East Suffolk Council- Waveney Local Plan Area .....	13
European protected sites within 20km of the East Suffolk Council- Suffolk Coastal Local Plan Area .....	17
Appendix 3: Relevant European protected sites .....	21
Appendix 4: Natural England Consultation Response .....	31

# 1. Introduction

1.1 The European Habitats Directive<sup>1</sup> and Wild Birds Directive<sup>2</sup> provide protection for sites that are of exceptional importance in respect of rare, endangered or vulnerable natural habitats and species. The network consists of Special Areas of Conservation (SACs) and Special Protection Areas (SPAs). Both types can also be referred to as European Sites. The National Planning Policy Framework (NPPF) also states that Ramsar sites should be afforded the same level of protection as the European sites.

1.2 The requirement to undertake Habitats Regulation Assessment (HRA) of plans and projects is set out in the Conservation of Habitats and Species Regulations (2017) (as amended).

1.3 Regulation 105 of the Conservation of Habitats and Species Regulations (2017) states:

‘Where a land use plan:

(a) Is likely to have a significant effect on a European site or a European offshore marine site (either alone or in combination with other plans or projects), and

(b) Is not directly connected with or necessary to the management of the site, The plan-making authority for that plan must, before the plan is given effect, make an appropriate assessment of the implications for the site in view of that site’s conservation objectives.’

1.4 The HRA is therefore undertaken in stages and should conclude whether or not a proposal or policy would adversely affect the integrity of any sites.

Stage 1: Determining whether a plan is likely to have a significant effect on a European site. This needs to take account of the likely impacts in combination with other relevant plans and projects. This assessment should be made using the precautionary principle. The screening assessment must reflect the outcomes of the 2018 judgement of the Court of Justice of the European

---

<sup>1</sup> 92/43/EEC

<sup>2</sup> 2009/147/EEC

Union<sup>3</sup>, which has ruled that where mitigation is necessary this must be identified through an Appropriate Assessment.

Stage 2: Carrying out Appropriate Assessment and ascertaining the effect on site integrity. The effects of the plan on the conservation objectives of sites should be assessed, to ascertain whether the plan has an adverse effect on the integrity of a European site.

Stage 3: Identifying mitigation measures and alternative solutions. The aim of this stage is to find ways of avoiding or significantly reducing adverse impacts, so that site integrity is no longer at risk. If there are still likely to be negative impacts, the option should be dropped, unless exceptionally it can be justified by imperative reasons of overriding public interest.

1.5 The draft Historic Environment Supplementary Planning Document (SPD) is being produced by East Suffolk Council. The SPD will apply to the whole of the East Suffolk Council area, excluding the parts of East Suffolk that are within the Broads National Park, for which the Broads Authority is the local planning authority. This report considers whether there are likely to be significant effects on protected European sites and where a full Appropriate Assessment may be required.

1.6 East Suffolk Council is covered by two Local Plans, the East Suffolk Council - Suffolk Coastal Local Plan adopted September 2020 and the Waveney Local Plan adopted March 2019. In addition, the Broads Local Plan covers the Broads Authority area of the District.

1.7 The Suffolk Coastal Local Plan and the Waveney Local Plan were both subject to Habitats Regulations Assessment as part of their production. Where screening identified a likely significant effect, Appropriate Assessment was undertaken and the mitigation measures identified were incorporated within the Plans, resulting in conclusions that the plans will not lead to any adverse effects on European wildlife sites within and in the vicinity of the (then) Suffolk Coastal and Waveney Districts. Both Appropriate Assessments identified

---

<sup>3</sup> C-323/17 – People over Wind, Peter Sweetman v Coillte Teoranta

recreational disturbance particularly from dog walkers as a significant effect. The Council has subsequently produced a Recreational Avoidance and Mitigation Strategy and requires payment towards mitigation from residential developments within 13km of the protected European sites.

## 2. Protected sites covered by this report

- 2.1 Sites included in this assessment are listed in Table 1. This includes all sites that are within 20km of East Suffolk Council. The locations of the sites are shown on maps in Appendix 2 and the Qualifying Features and Conservation Objectives of the sites are contained in Appendix 3, along with a summary of the pressures and threats as documented in the Appropriate Assessments for the Local Plans.

**Table 1: Relevant European protected sites**

<b>Name</b>
Alde-Ore and Butley Estuaries SAC,
Alde-Ore Estuary SPA, Ramsar
Benacre to Easton Bavents SPA
Benacre to Easton Bavents Lagoons SAC
Breydon Water SPA, Ramsar
Broadland SPA, Ramsar
Deben Estuary SPA, Ramsar
Dew's Ponds SAC
Great Yarmouth North Denes SPA
Haisborough, Hammond and Winterton SAC
Minsmere to Walberswick Heaths & Marshes SAC
Minsmere – Walberswick SPA, Ramsar
Norfolk Valley Fens SAC
Outer Thames Estuary SPA
Orfordness – Shingle Street SAC
Sandlings SPA
Southern North Sea SAC
Staverton Park and The Thicks, Wantisden SAC
Stour and Orwell Estuaries SPA, Ramsar
The Broads SAC
Winterton-Horsey Dunes SAC

### 3. Historic Environment Supplementary Planning Document

- 3.1 This HRA report reviews the draft Historic Environment Supplementary Planning Document (SPD).
- 3.3 The draft Historic Environment SPD provides information and advice concerning the conservation and enhancement of the historic environment, in relation to any proposal potentially affecting the significance of a heritage asset. The guidance contained in the draft SPD will assist in the implementation of Local Plan and Neighbourhood Plan policies for East Suffolk regarding the historic environment. The SPD, when adopted, will be a material consideration in determination of applications for planning permission and Listed Building Consent.
- 3.4 Chapters 1 to 4 of the SPD set out the policy context and purpose of the SPD, describing some key elements of the historic environment that are addressed in the guidance (Listed Buildings and Conservation areas). These sections are descriptive and have therefore not been included in the screening table in section 5 of this report.
- 3.5 Chapters 5 to 17 set out detailed guidance for owners and developers of historic buildings and heritage assets. These chapters cover a number of aspects and considerations, including extensions, sustainability, alterations and conversions. These chapters have been included in the screening table in section 5 of this report.
- 3.6 Chapter 18 gives further guidance for those wishing to make a planning application affecting a heritage asset. This chapter is focused on the information that will need to be submitted alongside such an application, it is descriptive and has therefore not been included in the screening table in section 5 of this report.
- 3.7 The SPD also includes 3 appendices. These are descriptive and have therefore not been included in the screening table in section 5 of this report.

## 4. Other Plans and Projects

- 4.1 Regulation 105 of the Habitats Regulations requires consideration to be given to whether a Plan will have an effect either alone or in combination with other plans or projects.
- 4.2 As noted in the introduction, the other key plans are the Local Plans. The Local Plans set out the broad scale and distribution of development across the area of East Suffolk formerly covered by Suffolk Coastal District and Waveney District.
- 4.5 The draft Historic Environment Supplementary Planning Document (SPD) adds detail to policies within both the Suffolk Coastal Local Plan and the Waveney Local Plan, specifically policies SCLP11.3-11.8 of the Suffolk Coastal Local Plan and policies WLP8.37-8.40 of the Waveney Local Plan.
- 4.6 A screening process considered each policy in the Suffolk Coastal and Waveney Local Plans and concluded whether significant effects were likely and if Appropriate Assessment was therefore needed. The Appropriate Assessments of the Suffolk Coastal and Waveney Local Plans considered the following themes:
- Recreation pressure,
  - Air quality and traffic emissions,
  - Biodiversity net gain,
  - Urbanisation,
  - Water quality, resources and treatment, and
  - Flood risk and coastal erosion.
- 4.7 Mitigation measures were identified within the Appropriate Assessments and incorporated within both Local Plans, resulting in a conclusion that neither plan would lead to any adverse effects on European wildlife sites within and in the vicinity of the (then) Suffolk Coastal and Waveney Districts.

## 5. Assessment of likely significant effects of the Draft Historic Environment Supplementary Planning Document (SPD) on European protected sites

- 5.1 Table 3 below considers each relevant section of the draft Historic Environment Supplementary Planning Document (SPD) in relation to whether there is potential for a likely significant effect on protected European sites. This constitutes Stage 1 as set out under paragraph 1.4 above. Consideration is given to the characteristics and location of the protected sites. The relevant sections are considered within the context of the Local Plan policies from which they hang and which have themselves been subject to Habitats Regulations Assessment, as set out in section 4 above.



**Table 3: Likely significant effects of the Draft Historic Environment Supplementary Planning Document**

<b>Chapter</b>	<b>Assessment of potential impact on Natura 2000 sites</b>	<b>Natura 2000 sites that could possibly be affected</b>	<b>Likely significant effect identified</b>	<b>AA needed?</b>
5. Historic Parks and Gardens	Provides some general background on Historic Parks and Gardens as well as detailed guidance on the future management of these sites. This section primarily relates to the management of existing heritage assets and will not give rise to any likely significant effects.	None	None	No
6. Buildings – General Principles	Sets out the 4 key principles to be considered when undertaking works to historic buildings. This primarily relates to the management of existing heritage assets and will not give rise to any likely significant effects.	None	None	No
7. Sustainable Energy and Construction and the Historic Environment	Contains detailed guidance about how domestic renewable energy schemes can be successfully applied to historic buildings and information about the related issues of rainwater harvesting and flood protection. This chapter also includes information relating to the consideration of heritage impacts in large scale energy projects.	None	None	No

Chapter	Assessment of potential impact on Natura 2000 sites	Natura 2000 sites that could possibly be affected	Likely significant effect identified	AA needed?
	This primarily relates to the management of existing heritage assets and will not give rise to any likely significant effects.			
8. Extending an Historic Building	Detailed guidance setting out how to protect the significance of a heritage asset when extension or alteration is proposed. This relates to the management of existing heritage assets and will not give rise to any likely significant effects.	None	None	No
9. The Setting of Historic Buildings	Guidance on development that may affect the setting of a historic building, including garages, cart lodges, sheds, home offices and annexes. This primarily relates to the management of existing heritage assets and will not give rise to any likely significant effects.	None	None	No
10. Windows, Doors and Porches	Detailed guidance on the repair and replacement of windows, doors and porches within historic buildings. This relates to the management of existing heritage assets and will not give rise to any likely significant effects.	None	None	No
11. Conversion of Historic Buildings in the	Provides guidance on the conversion of rural buildings, particularly	None	None	No

<b>Chapter</b>	<b>Assessment of potential impact on Natura 2000 sites</b>	<b>Natura 2000 sites that could possibly be affected</b>	<b>Likely significant effect identified</b>	<b>AA needed?</b>
Countryside for Residential Use	agricultural ones, to residential use. The guidance within this section could also apply to change of use to non-residential uses. The principles set out in this section seek to limit the impact of such conversions on the value and character of the heritage asset. This section will not give rise to any likely significant effects.			
12. Lighting, security and satellite communications apparatus	Guidance for the installation of new lighting, security and satellite communication equipment on historic buildings. This guidance relates to the management of existing heritage assets and will not give rise to any likely significant effects.	None	None	No
13. Shopfronts and Signage	Guidance on signage affecting historic buildings and alterations to historic shopfronts. This includes detailed guidance on the individual elements that make up a shopfront. This relates to the management of existing heritage assets and will not give rise to any likely significant effects.	None	None	No
14. Demolition	Sets out guidance on the demolition, or partial	None	None	No

Chapter	Assessment of potential impact on Natura 2000 sites	Natura 2000 sites that could possibly be affected	Likely significant effect identified	AA needed?
	demolition of heritage assets. This relates to the management of existing heritage assets and will not give rise to any likely significant effects.			
15. Repairs and Maintenance	Advice on what should be considered when repairing or altering a historic building. This relates to the management of existing heritage assets and will not give rise to any likely significant effects.	None	None	No
16. Pipework and Services	Detailed guidance on specific issues associated with pipework and services in historic buildings. This relates to the management of existing heritage assets and will not give rise to any likely significant effects.	None	None	No
17. Chimneys	Detailed guidance on specific issues associated with chimneys on historic buildings. This relates to the management of existing heritage assets and will not give rise to any likely significant effects.	None	None	No

## 7. Summary and conclusions

- 7.1 The Historic Environment Supplementary Planning Document (SPD) provides additional guidance to inform the determination of planning applications alongside the Waveney and Suffolk Coastal Local Plans. The SPD provides further guidance and advice concerning the conservation and enhancement of the historic environment. The guidance contained in the draft SPD will assist in the implementation of Local Plan and Neighbourhood Plan policies for East Suffolk relating to the historic environment. The SPD, when adopted, will be a material consideration in the determining of applications for planning permission and Listed Building Consent.
- 7.2 Implementation of the Historic Environment Supplementary Planning Document will not lead to likely significant effects on protected European sites.

Signed: 

Dated: 02 December 2020

Desi Reed  
Planning Policy and Delivery Manager  
East Suffolk Council

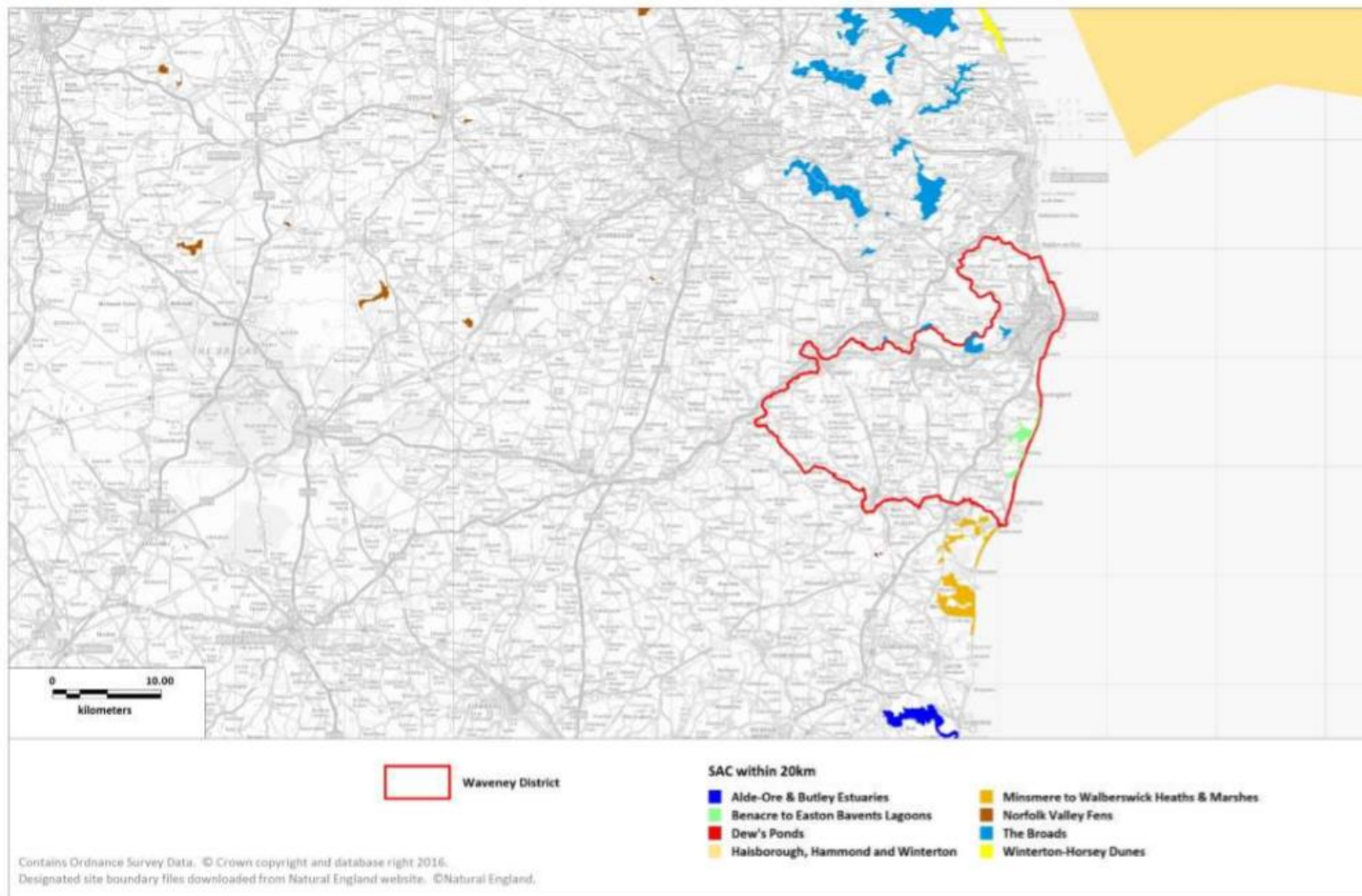
## Appendix 1: Sources of background information

- East Suffolk Council – Suffolk Coastal Local Plan (September 2020)
- East Suffolk Council – Waveney Local Plan (March 2019)
- Habitats Regulations Assessment for the Suffolk Coastal Local Plan at Final Draft Plan stage (incorporating Main Modifications) (May 2020)
- The Habitats Regulations Assessment of the Waveney Local Plan (December 2018)

## Appendix 2: Locations of European protected sites

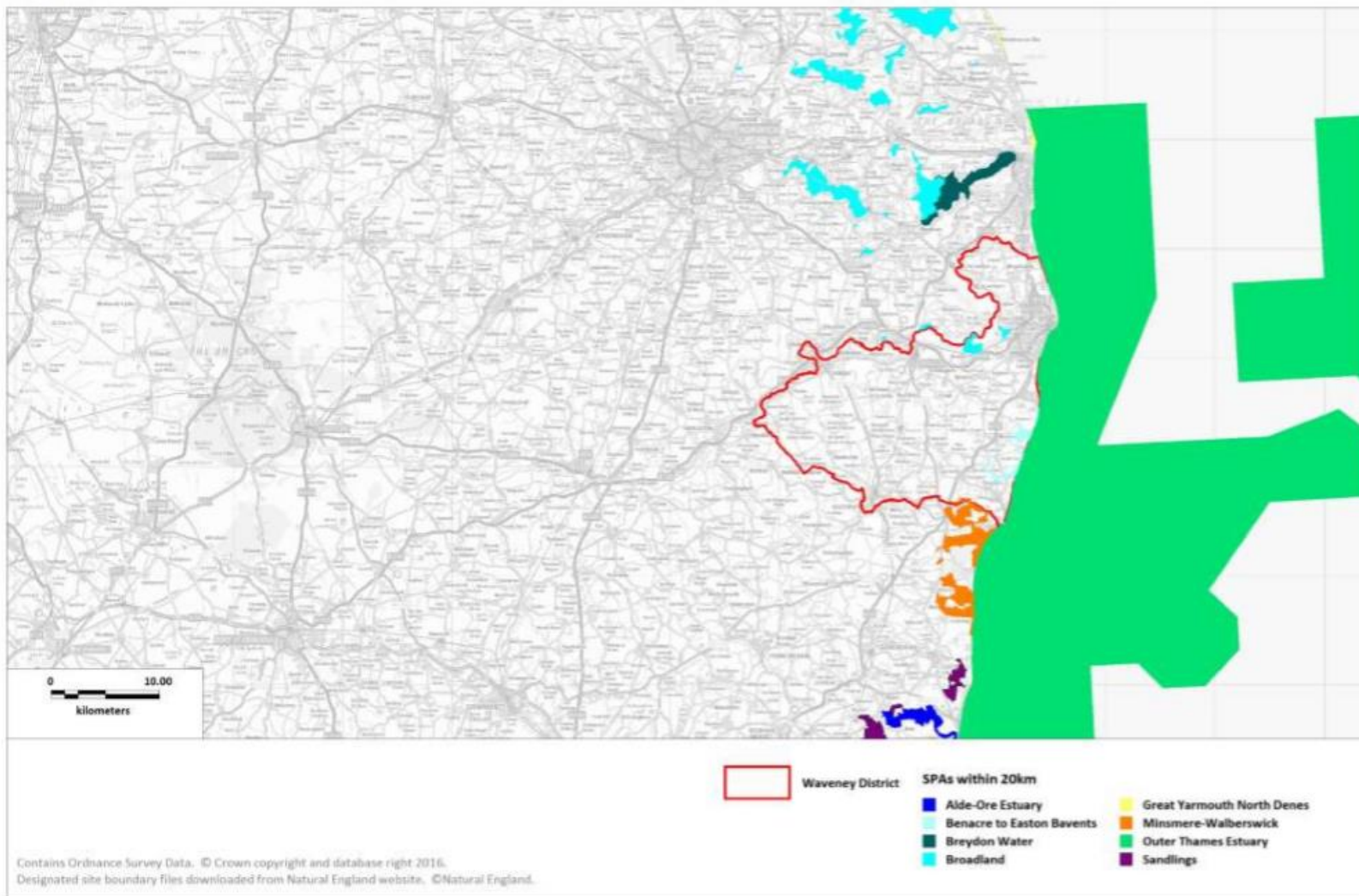
European protected sites within 20km of the East  
Suffolk Council- Waveney Local Plan Area

Map 1: SACs

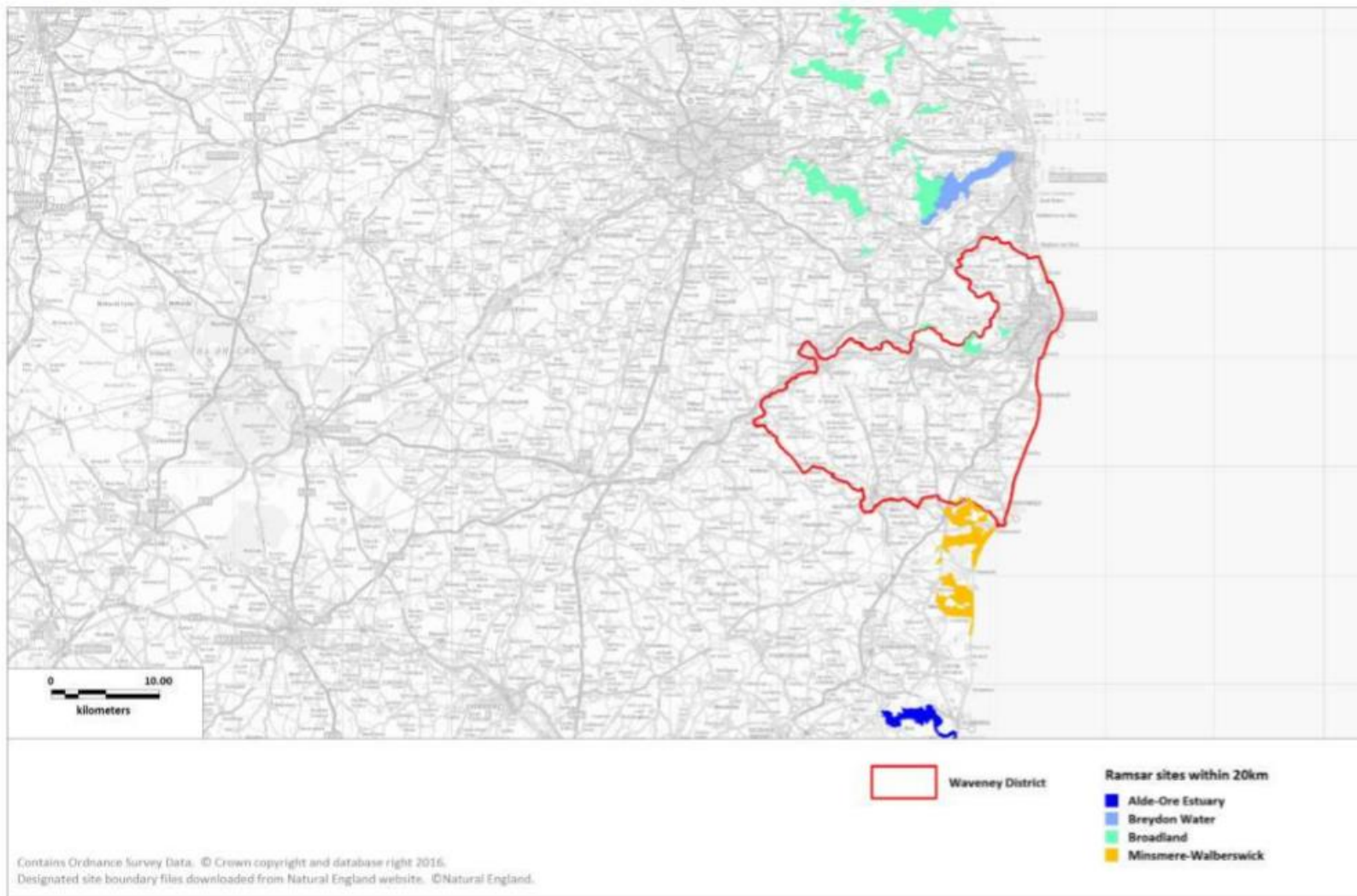




Map 2: SPAs

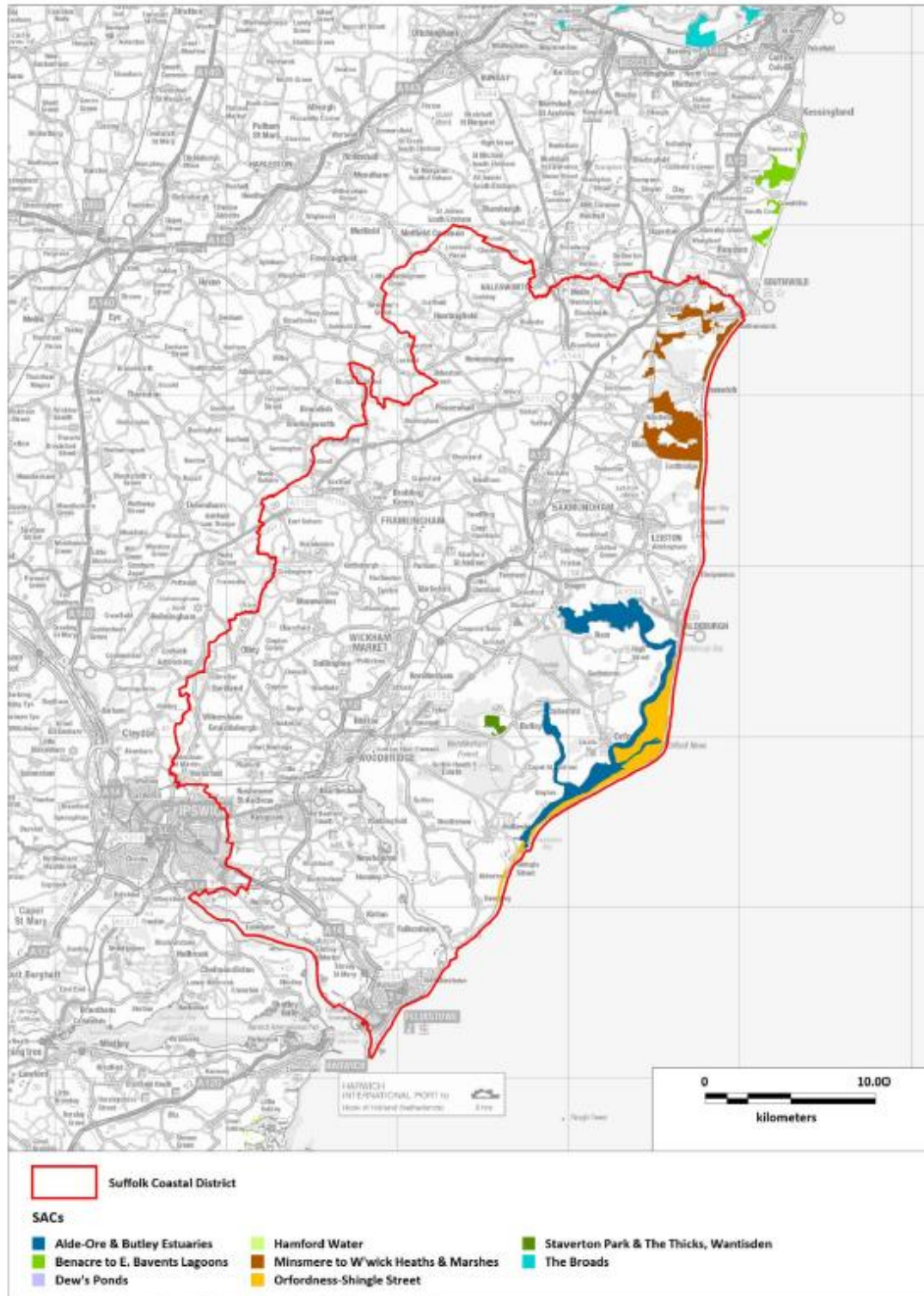


Map 3: Ramsar Sites



European protected sites within 20km of the East  
Suffolk Council- Suffolk Coastal Local Plan Area

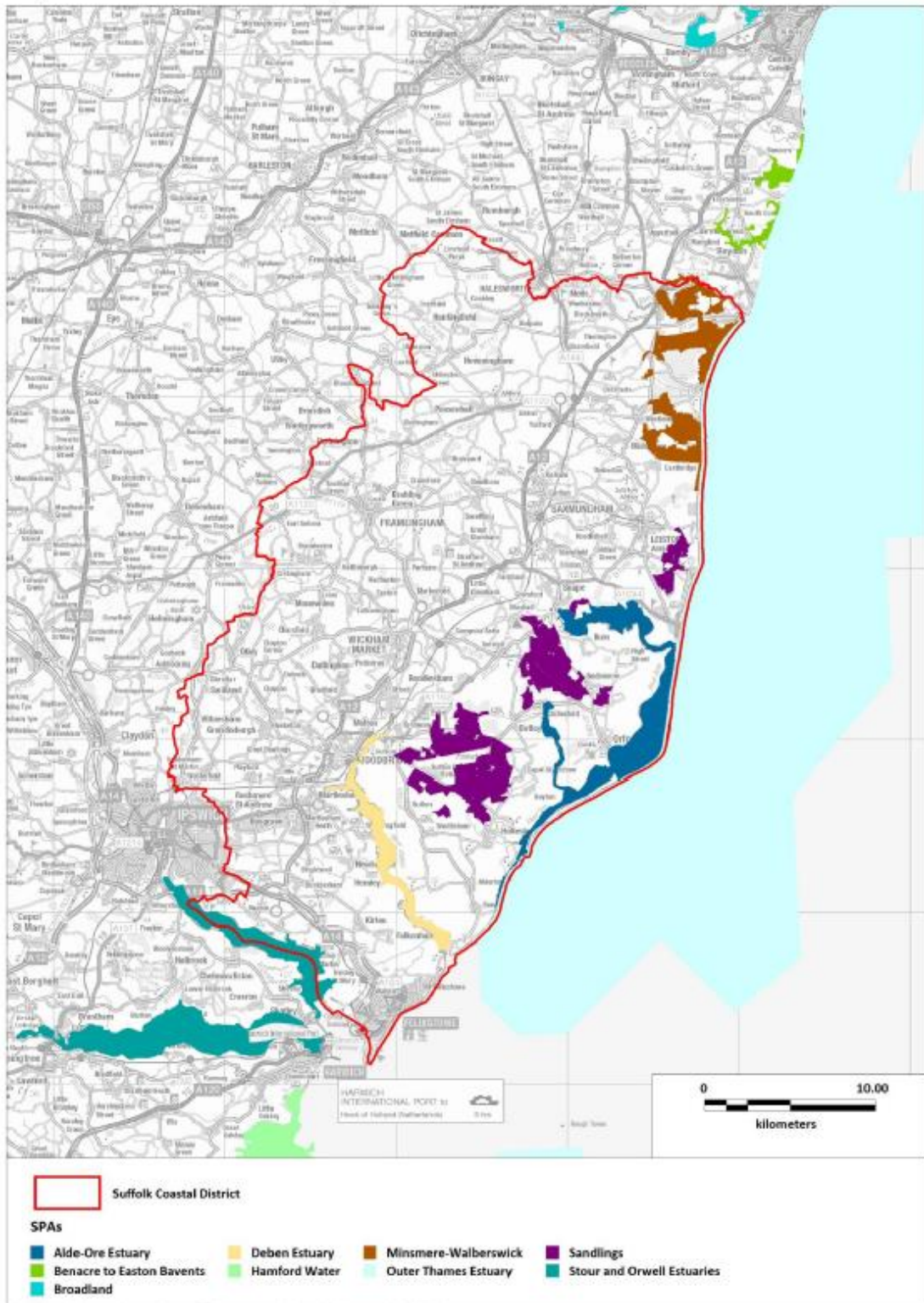
Map 1: SAC sites where boundary within 20km of Suffolk Coastal District



Contains Ordnance Survey Data. © Crown copyright and database right 2017.  
 Contains Natural England information © Natural England and Database Right. All rights Reserved.

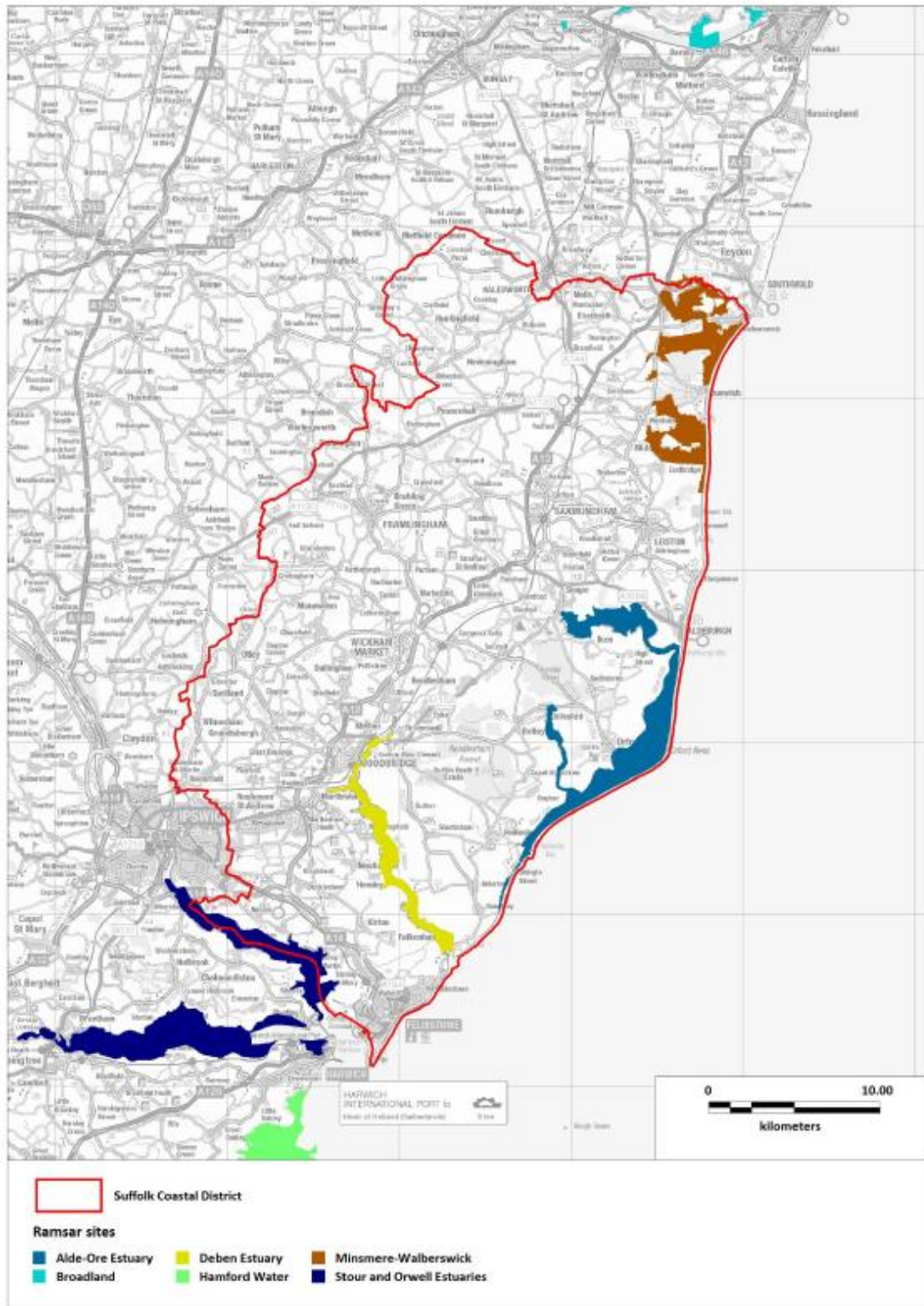


Map 2: SPA sites where boundary within 20km of Suffolk Coastal District



Contains Ordnance Survey Data. © Crown copyright and database right 2017.  
 Contains Natural England Information © Natural England and Database Right. All rights Reserved.

**Map 3: Ramsar sites where boundary within 20km of Suffolk Coastal District**



Contains Ordnance Survey Data, © Crown copyright and database right 2017.  
 Contains Natural England Information © Natural England and Database Right. All rights Reserved.

## Appendix 3: Relevant European protected sites

Name	Qualifying features	Conservation Objectives	Pressure and threats (as summarised in the Habitats Regulations Assessment for the Suffolk Coastal Local Plan at Final Draft Plan Stage (December 2018))
<b>Special Areas of Conservation</b>			
Alde-Ore and Butley Estuaries	H1130:Estuaries H1140: Mudflats and sandflats not covered by seawater at low tide; Intertidal mudflats and sandflats H1330: Atlantic salt meadows	Ensure that the integrity of the site is maintained or restored as appropriate, and ensure that the site contributes to achieving the Favourable Conservation Status of its Qualifying Features by maintaining or restoring: The extent and distribution of qualifying natural habitats; The structure and function (including typical species) of qualifying natural habitats; The supporting processes on which qualifying natural habitats rely.	Hydrological changes, public access/disturbance, inappropriate coastal management, coastal squeeze, inappropriate pest control, changes in species distributions, invasive species, air pollution, fisheries (commercial marine and estuarine) (Alde-Ore and Butley Estuaries SAC and Alde-Ore SPA)
Benacre to Easton Barents Lagoons	H1150# Coastal lagoons, A195(B) <i>Sterna albifrons</i> : Little tern A021(B) <i>Botaurus stellaris</i> : Great bittern A081(B) <i>Circus aeruginosus</i> : Eurasian marsh harrier	Ensure that the integrity of the site is maintained or restored as appropriate, and ensure that the site contributes to achieving the Favourable Conservation Status of its Qualifying Features, by maintaining or restoring; The extent and distribution of qualifying natural habitats,	Public access/disturbance, water pollution, physical modification, changes in species distributions, fisheries (marine and estuarine).

		The structure and function (including typical species) of qualifying natural habitats, and, The supporting processes on which qualifying natural habitats rely.	
Dew's Ponds	S1166 Triturus cristatus: Great crested newt	Ensure that the integrity of the site is maintained or restored as appropriate, and ensure that the site contributes to achieving the Favourable Conservation Status of its Qualifying Features, by maintaining or restoring; The extent and distribution of the habitats of qualifying species, The structure and function of the habitats of qualifying species, The supporting processes on which the habitats of qualifying species rely, The populations of qualifying species, and, The distribution of qualifying species within the site.	None identified
Minsmere to Walberswick Heaths and Marshes	H4030 European dry heaths H1210 Annual vegetation of drift lines H1220 Perennial vegetation of stony banks A052(B) Anas crecca: Eurasian teal A021(B) Botaurus stellaris: Great bittern A081(B) Circus aeruginosus: Eurasian marsh harrier	Ensure that the integrity of the site is maintained or restored as appropriate, and ensure that the site contributes to achieving the Favourable Conservation Status of its Qualifying Features, by maintaining or restoring; The extent and distribution of qualifying natural habitats and habitats,	Coastal squeeze, public access/disturbance, changes in species distributions, invasive species, inappropriate pest control, air pollution, water pollution, deer, fisheries (commercial marine and estuarine)



	<p>A082(NB) Circus cyaneus: Hen harrier                  A224(B) Caprimulgus europaeus: European nightjar                  A056(B) Anas clypeata: Northern shoveler                  A056(NB) Anas clypeata: Northern shoveler                  A051(B) Anas strepera: Gadwall                  A051(NB) Anas strepera: Gadwall                  A132(B) Recurvirostra avosetta: Pied avocet                  A195(B) Sterna albifrons: Little tern                  A394(NB) Anser albifrons albifrons: Greater white-fronted goose</p>	<p>The structure and function (including typical species) of qualifying natural habitats, and,                  The supporting processes on which qualifying natural habitats rely.</p>	
<p>Orfordness – Shingle Street</p>	<p>H1150: Coastal Lagoons                  H1210: Annual vegetation of drift lines                  H1220: Perennial vegetation of stony banks; Coastal shingle vegetation outside the reach of waves</p>	<p>Ensure that the integrity of the site is maintained or restored as appropriate, and ensure that the site contributes to achieving the Favourable Conservation Status of its Qualifying Features by maintaining or restoring:                  The extent and distribution of qualifying natural habitats;                  The structure and function (including typical species) of qualifying natural habitats; and                  The supporting processes on which qualifying natural habitats rely.</p>	<p>Not identified in Suffolk Coastal Final Draft Local Plan HRA.</p>

<p>Staverton Park and The Thicks, Wantisden</p>	<p>H9190: Old acidophilous oak woods with <i>Quercus robur</i> on sandy plains; Dry oak-dominated woodland.</p>	<p>Ensure that the integrity of the site is maintained or restored as appropriate, and ensure that the site contributes to achieving the Favourable Conservation Status of its Qualifying Features by maintaining or restoring:                  The extent and distribution of qualifying natural habitats;                  The structure and function (including typical species) of qualifying natural habitats; and                  The supporting processes on which qualifying natural habitats rely.</p>	<p>Woodland management, disease, atmospheric pollution.</p>
<p>The Broads</p>	<p>H7210# Calcareous fens with <i>Cladium mariscus</i> and species of the <i>Caricion davallianae</i>                  S1016 <i>Vertigo moulinsiana</i>: Desmoulin's whorl snail                  H7230 Alkaline fens                  H6410 <i>Molinia</i> meadows on calcareous, peaty or clayey-silt-laden soils (<i>Molinion caeruleae</i>)                  H91E0# Alluvial forests with <i>Alnus glutinosa</i> and <i>Fraxinus excelsior</i> (<i>Alno-Padion</i>, <i>Alnion incanae</i>, <i>Salicion albae</i>)                  H7140 Transition mires and quaking bogs</p>	<p>Ensure that the integrity of the site is maintained or restored as appropriate, and ensure that the site contributes to achieving the Favourable Conservation Status of its Qualifying Features, by maintaining or restoring;                  The extent and distribution of qualifying natural habitats and habitats of qualifying species,                  The structure and function (including typical species) of qualifying natural habitats,                  The structure and function of the habitats of qualifying species,                  The supporting processes on which qualifying natural habitats and the habitats of qualifying species rely,</p>	<p>Water pollution, climate change, invasive species, siltation, inappropriate water levels, hydrological changes, water abstraction, change in land management, inappropriate ditch management, inappropriate scrub control, changes in species distributions, public access/disturbance, undergrazing, drainage, direct impact from 3rd party</p>

	<p>H3140 Hard oligo-mesotrophic waters with benthic vegetation of Chara spp</p> <p>H3150 Natural eutrophic lakes with Magnopotamion or Hydrocharition-type vegetation</p> <p>S1355 Lutra lutra: Otter</p> <p>S1903 Liparis loeselii: Fen orchid</p> <p>S4056 Anisus vorticulus: Little ramshorn whirlpool snail</p>	<p>The populations of qualifying species, and, The distribution of qualifying species within the site.</p>	
<b>Special Protection Areas</b>			
<p>Alde-Ore Estuary (also Ramsar site)</p>	<p>A081: Eurasian marsh harrier (breeding)</p> <p>A132: Pied avocet (non-breeding)</p> <p>A132: Pied avocet (breeding)</p> <p>A151: Ruff (non-breeding)</p> <p>A162: Common redshank (non-breeding)</p> <p>A183: Lesser black-backed gull (breeding)</p> <p>A191: Sandwich tern (breeding)</p> <p>A195: Little tern (breeding)</p>	<p>Ensure that the integrity of the site is maintained or restored as appropriate, and ensure that the site contributes to achieving the aims of the Wild Birds Directive, by maintaining or restoring:</p> <p>The extent and distribution of the habitats of the qualifying features;</p> <p>The structure and function of the habitats of the qualifying features;</p> <p>The supporting processes on which the habitats of the qualifying features rely;</p> <p>The population of each of the qualifying features; and</p> <p>The distribution of the qualifying features within the site.</p>	<p>Hydrological changes, public access/disturbance, inappropriate coastal management, coastal squeeze, inappropriate pest control, changes in species distributions, invasive species, air pollution, fisheries (commercial marine and estuarine)</p> <p>(Alde-Ore and Butley Estuaries SAC and Alde-Ore SPA)</p>
<p>Benacre to Easton Bvents</p>	<p>H1150# Coastal lagoons, A195(B) Sterna albifrons: Little tern</p>	<p>Ensure that the integrity of the site is maintained or restored as appropriate, and ensure that the site contributes to</p>	<p>Public access/disturbance, water pollution, physical modification, changes</p>

	<p>A021(B) <i>Botaurus stellaris</i>: Great bittern  A081(B) <i>Circus aeruginosus</i>: Eurasian marsh harrier</p>	<p>achieving the aims of the Wild Birds Directive, by maintaining or restoring;  The extent and distribution of the habitats of the qualifying features,  The structure and function of the habitats of the qualifying features,  The supporting processes on which the habitats of the qualifying features rely,  The population of each of the qualifying features, and,  The distribution of the qualifying features within the site.</p>	<p>in species distributions, fisheries (marine and estuarine).</p>
<p>Broadlands (also Ramsar site)</p>	<p>H7210# Calcareous fens with <i>Cladium mariscus</i> and species of the <i>Caricion davallianae</i>  S1016 <i>Vertigo moulinsiana</i>: Desmoulin's whorl snail  H7230 Alkaline fens  H6410 <i>Molinia</i> meadows on calcareous, peaty or clayey-silt-laden soils (<i>Molinion caeruleae</i>)  H91E0# Alluvial forests with <i>Alnus glutinosa</i> and <i>Fraxinus excelsior</i> (<i>Alno-Padion</i>, <i>Alnion incanae</i>, <i>Salicion albae</i>)  H7140 Transition mires and quaking bogs  H3140 Hard oligo-mesotrophic waters with benthic vegetation of <i>Chara</i> spp</p>	<p>Ensure that the integrity of the site is maintained or restored as appropriate, and ensure that the site contributes to achieving the Favourable Conservation Status of its Qualifying Features, by maintaining or restoring;  The extent and distribution of qualifying natural habitats and habitats of qualifying species,  The structure and function (including typical species) of qualifying natural habitats,  The structure and function of the habitats of qualifying species,  The supporting processes on which qualifying natural habitats and the habitats of qualifying species rely,  The populations of qualifying species, and,</p>	<p>Water pollution, climate change, invasive species, siltation, inappropriate water levels, hydrological changes, water abstraction, change in land management, inappropriate ditch management, inappropriate scrub control, changes in species distributions, public access/disturbance, undergrazing, drainage, direct impact from 3rd party</p>

	H3150 Natural eutrophic lakes with Magnopotamion or Hydrocharition-type vegetation S1355 Lutra lutra: Otter S1903 Liparis loeselii: Fen orchid S4056 Anisus vorticulus: Little ramshorn whirlpool snail	The distribution of qualifying species within the site.	
Deben Estuary (also Ramsar site)	A046a: Dark bellied brent goose (non-breeding) A132: Pied avocet (non-breeding)	Ensure that the integrity of the site is maintained or restored as appropriate, and ensure that the site contributes to achieving the aims of the Wild Birds Directive, by maintaining or restoring: The extent and distribution of the habitats of the qualifying features; The structure and function of the habitats of the qualifying features; The supporting processes on which the habitats of the qualifying features rely; The population of each of the qualifying features; and The distribution of the qualifying features within the site.	Coastal squeeze, disturbance to birds, water and air pollution.
Outer Thames Estuary	A001: Red-throated Diver (Non-breeding) A195: Common Tern (Breeding) A193: Little Tern (Breeding)	Ensure that the integrity of the site is maintained or restored as appropriate, and ensure that the site contributes to achieving the aims of the Wild Birds Directive, by maintaining or restoring: The extent and distribution of the habitats of the qualifying features;	Not identified in Suffolk Coastal Final Draft Local Plan HRA. SIP identifies fisheries.

		<p>The structure and function of the habitats of the qualifying features;</p> <p>The supporting processes on which the habitats of the qualifying features rely;</p> <p>The population of each of the qualifying features; and</p> <p>The distribution of the qualifying features within the site.</p>	
<p>Minsmere to Walberswick (also Ramsar site)</p>	<p>H4030 European dry heaths</p> <p>H1210 Annual vegetation of drift lines</p> <p>H1220 Perennial vegetation of stony banks</p> <p>A052(B) <i>Anas crecca</i>: Eurasian teal</p> <p>A021(B) <i>Botaurus stellaris</i>: Great bittern</p> <p>A081(B) <i>Circus aeruginosus</i>: Eurasian marsh harrier</p> <p>A082(NB) <i>Circus cyaneus</i>: Hen harrier</p> <p>A224(B) <i>Caprimulgus europaeus</i>: European nightjar</p> <p>A056(B) <i>Anas clypeata</i>: Northern shoveler</p> <p>A056(NB) <i>Anas clypeata</i>: Northern shoveler</p> <p>A051(B) <i>Anas strepera</i>: Gadwall</p> <p>A051(NB) <i>Anas strepera</i>: Gadwall</p>	<p>Ensure that the integrity of the site is maintained or restored as appropriate, and ensure that the site contributes to achieving the aims of the Wild Birds Directive, by maintaining or restoring;</p> <p>The extent and distribution of the habitats of the qualifying features,</p> <p>The structure and function of the habitats of the qualifying features,</p> <p>The supporting processes on which the habitats of the qualifying features rely,</p> <p>The population of each of the qualifying features, and,</p> <p>The distribution of the qualifying features within the site.</p>	<p>Coastal squeeze, public access/disturbance, changes in species distributions, invasive species, inappropriate pest control, air pollution, water pollution, deer, fisheries (commercial marine and estuarine)</p>

	<p>A132(B) <i>Recurvirostra avosetta</i>: Pied avocet  A195(B) <i>Sterna albifrons</i>: Little tern  A394(NB) <i>Anser albifrons albifrons</i>: Greater white-fronted goose</p>		
Outer Thames Estuary	<p>A001 (W) <i>Gavia stellate</i> Red-throated Diver  A195 (B) <i>Sterna hirundo</i> Common Tern  A193 (B) <i>Sternula albifrons</i> Little Tern</p>	<p>Ensure that the integrity of the site is maintained or restored as appropriate, and ensure that the site contributes to achieving the aims of the Wild Birds Directive, by maintaining or restoring;  The extent and distribution of the habitats of the qualifying features,  The structure and function of the habitats of the qualifying features,  The supporting processes on which the habitats of the qualifying features rely,  The population of each of the qualifying features, and,  The distribution of the qualifying features within the site.</p>	<p>Not identified in Suffolk Coastal Final Draft Local Plan HRA. SIP identifies fisheries.</p>
Sandlings	<p>A224: European nightjar (breeding)  A246: Woodlark (breeding)</p>	<p>Ensure that the integrity of the site is maintained or restored as appropriate, and ensure that the site contributes to achieving the aims of the Wild Birds Directive, by maintaining or restoring:  The extent and distribution of the habitats of the qualifying features;</p>	<p>Changes in species distributions, inappropriate scrub control, deer, air pollution, public access/disturbance.</p>

		<p>The structure and function of the habitats of the qualifying features;</p> <p>The supporting processes on which the habitats of the qualifying features rely;</p> <p>The population of each of the qualifying features; and</p> <p>The distribution of the qualifying features within the site.</p>	
<p>Stour and Orwell Estuaries (also Ramsar site)</p>	<p>A046a: Dark bellied brent goose (non-breeding)</p> <p>A054: Northern pintail (non-breeding)</p> <p>A132: Pied avocet (non-breeding)</p> <p>A141: Grey plover (non-breeding)</p> <p>A143: Red knot (non-breeding)</p> <p>A149: Dunlin (non-breeding)</p> <p>A156: Black-tailed godwit (non-breeding)</p> <p>A162: Common redshank (non-breeding)</p> <p>Waterbird assemblage</p>	<p>Ensure that the integrity of the site is maintained or restored as appropriate, and ensure that the site contributes to achieving the aims of the Wild Birds Directive, by maintaining or restoring:</p> <p>The extent and distribution of the habitats of the qualifying features;</p> <p>The structure and function of the habitats of the qualifying features;</p> <p>The supporting processes on which the habitats of the qualifying features rely;</p> <p>The population of each of the qualifying features; and</p> <p>The distribution of the qualifying features within the site.</p>	<p>Coastal squeeze, disturbance to birds, air pollution and new development.</p>



## Appendix 4: Natural England Consultation Response

Date: 27 October 2020  
Our ref: 331792

Ian Johns  
East Suffolk Council

BY EMAIL ONLY



Hornbeam House  
Crewe Business Park  
Electra Way  
Crewe  
Cheshire  
CW1 6GJ

T 0300 060 3900

Dear Mr Johns

**Historic Environment Supplementary Planning Document (SPD) - SEA and HRA Screening**

Thank you for your consultation on the above dated and received by Natural England on 23 October 2020.

Natural England is a non-departmental public body. Our statutory purpose is to ensure that the natural environment is conserved, enhanced, and managed for the benefit of present and future generations, thereby contributing to sustainable development.

**Natural England has no comments to make in regards to the Historic Environment Supplementary Planning Document (SPD). Based on the plans submitted, Natural England agrees with the conclusion of both the Habitats Regulations Assessment Screening Statement and the Strategic Environmental Assessment Screening Opinion and has no objection to the proposed plans.**

The lack of comment from Natural England should not be interpreted as a statement that there are no impacts on the natural environment. Other bodies and individuals may wish to make comments that might help the Local Planning Authority (LPA) to fully take account of any environmental risks and opportunities relating to this document.

Should the proposal be amended in a way which significantly affects its impact on the natural environment, then in accordance with Section 4 of the Natural Environment and Rural Communities Act 2006, please consult Natural England again.

We really value your feedback to help us improve the service we offer. We have attached a feedback form to this letter and welcome any comments you might have about our service.

Yours sincerely  
Dawn Kinrade  
Consultations Team