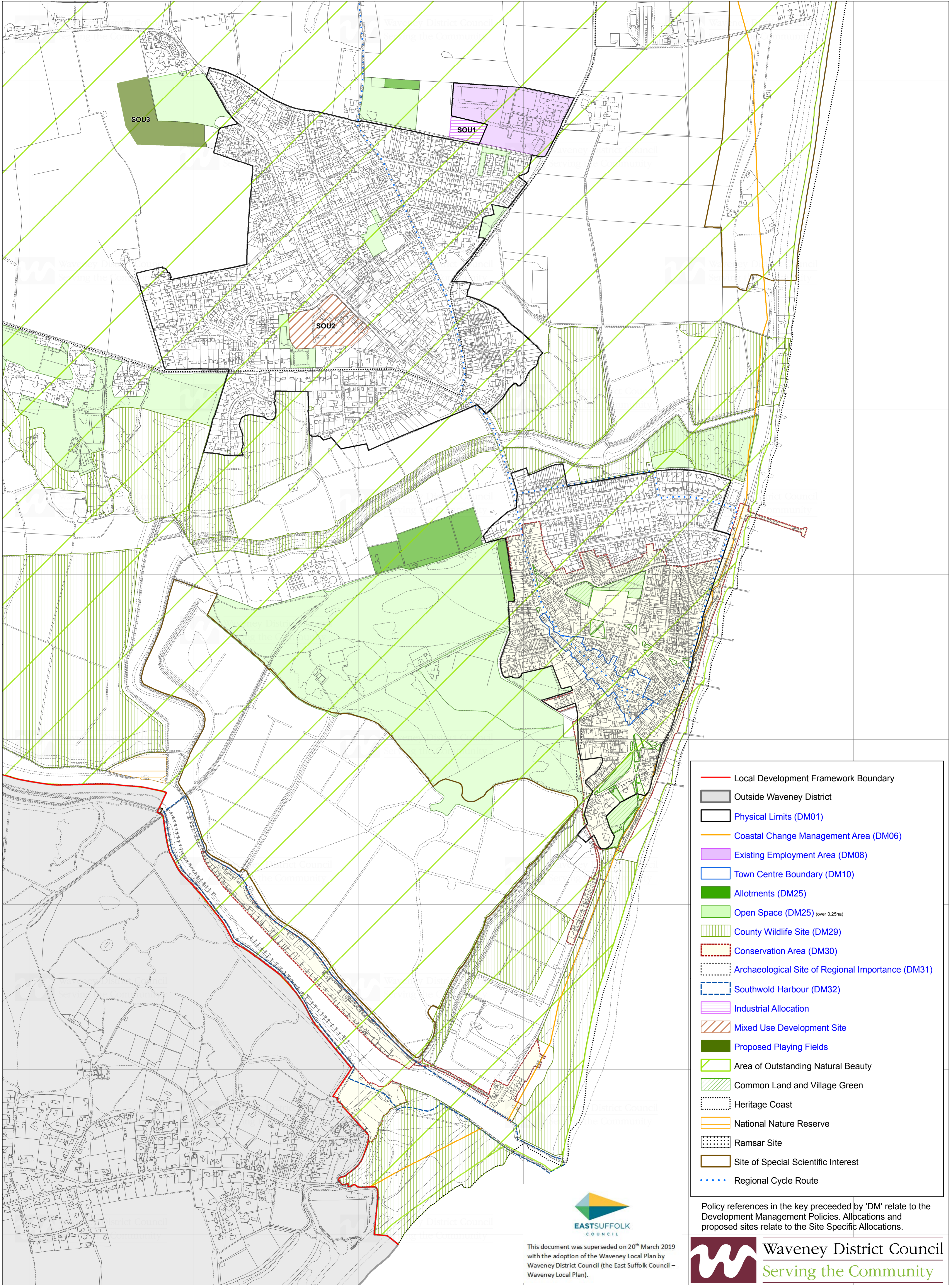


Southwold and Reydon Area Inset Map

Scale: 1:5,000

January 2012 - To accompany the Local Development Framework Adopted Development Plan Documents (Core Strategy, Development Management Policies, Site Specific Allocations and Lowestoft Lake Lothing and Outer Harbour Area Action Plan)



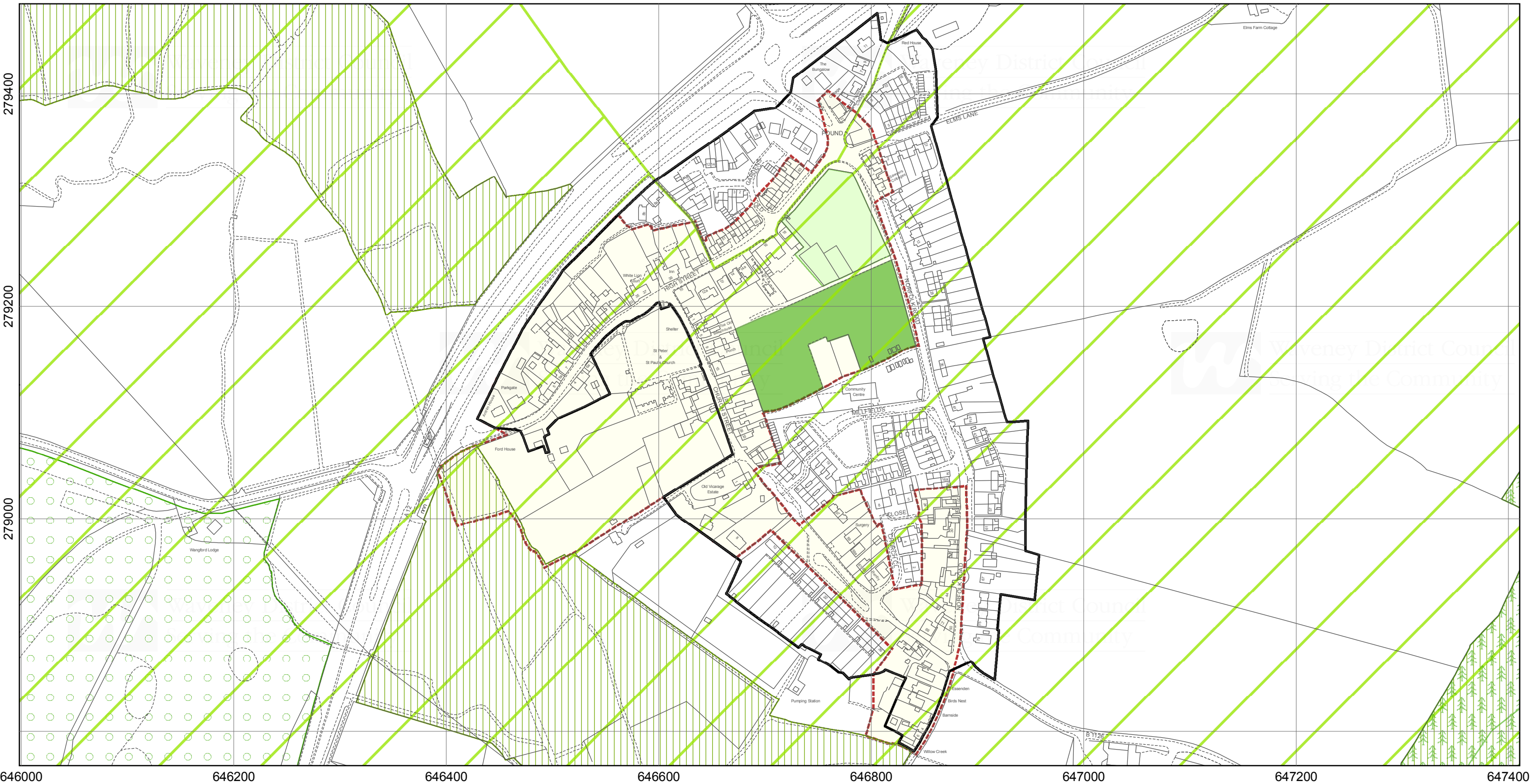
- Local Development Framework Boundary
- Outside Waveney District
- Physical Limits (DM01)
- Coastal Change Management Area (DM06)
- Existing Employment Area (DM08)
- Town Centre Boundary (DM10)
- Allotments (DM25)
- Open Space (DM25) (over 0.25ha)
- County Wildlife Site (DM29)
- Conservation Area (DM30)
- Archaeological Site of Regional Importance (DM31)
- Southwold Harbour (DM32)
- Industrial Allocation
- Mixed Use Development Site
- Proposed Playing Fields
- Area of Outstanding Natural Beauty
- Common Land and Village Green
- Heritage Coast
- National Nature Reserve
- Ramsar Site
- Site of Special Scientific Interest
- Regional Cycle Route

Policy references in the key preceded by 'DM' relate to the Development Management Policies. Allocations and proposed sites relate to the Site Specific Allocations.



This document was superseded on 20th March 2019 with the adoption of the Waveney Local Plan by Waveney District Council (the East Suffolk Council – Waveney Local Plan).

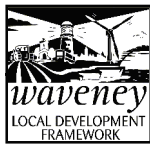




Physical Limits (DM01)	Open Space (DM25) (over 0.25ha)	Conservation Area (DM30)	Ancient Woodland
Allotments (DM25)	County Wildlife Site (DM29)	Historic Park and Garden (DM30)	Area of Outstanding Natural Beauty

Policy references in the key preceded by 'DM' relate to the Development Management Policies.

Reproduced from the Ordnance Survey mapping with the permission of the Controller of Her Majesty's Stationery Office (c) Crown Copyright. Unauthorised reproduction infringes Crown copyright and may lead to prosecution or civil proceedings. Waveney District Council Licence No. 100042052, 2012. Flood zone information can be found on the Environment Agency website www.Environment-Agency.gov.uk/Flood. Minerals safeguarding areas can be found on the Suffolk County Council website <http://www.Suffolk.gov.uk/Environment/MineralsandWastePlanning/MineralsPlanning> **Source Information:** Natural England – Area of Outstanding Natural Beauty, Ancient Woodland. English Heritage – Historic Parks and Gardens. Suffolk Biological Records Centre – County Wildlife Sites.

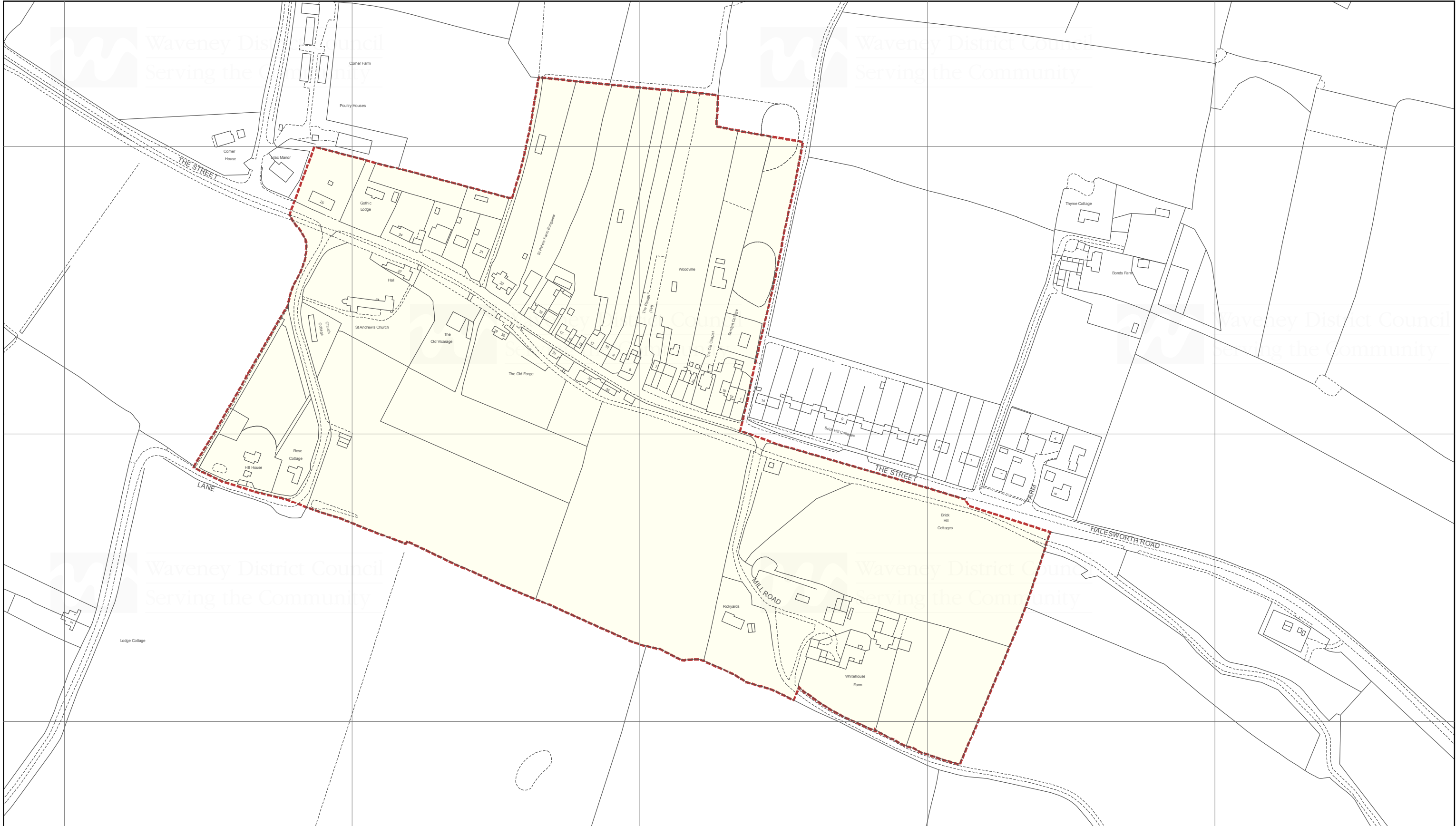


Wissett Inset Map



1:2,500

January 2012 - To accompany the Local Development Framework Adopted Development Plan Documents (Core Strategy, Development Management Policies, Site Specific Allocations and Lowestoft Lake Lothing and Outer Harbour Area Action Plan)



636400 636600 636800 637000 637200



Conservation Area (DM30)

Policy references in the key preceded by 'DM' relate to the Development Management Policies.



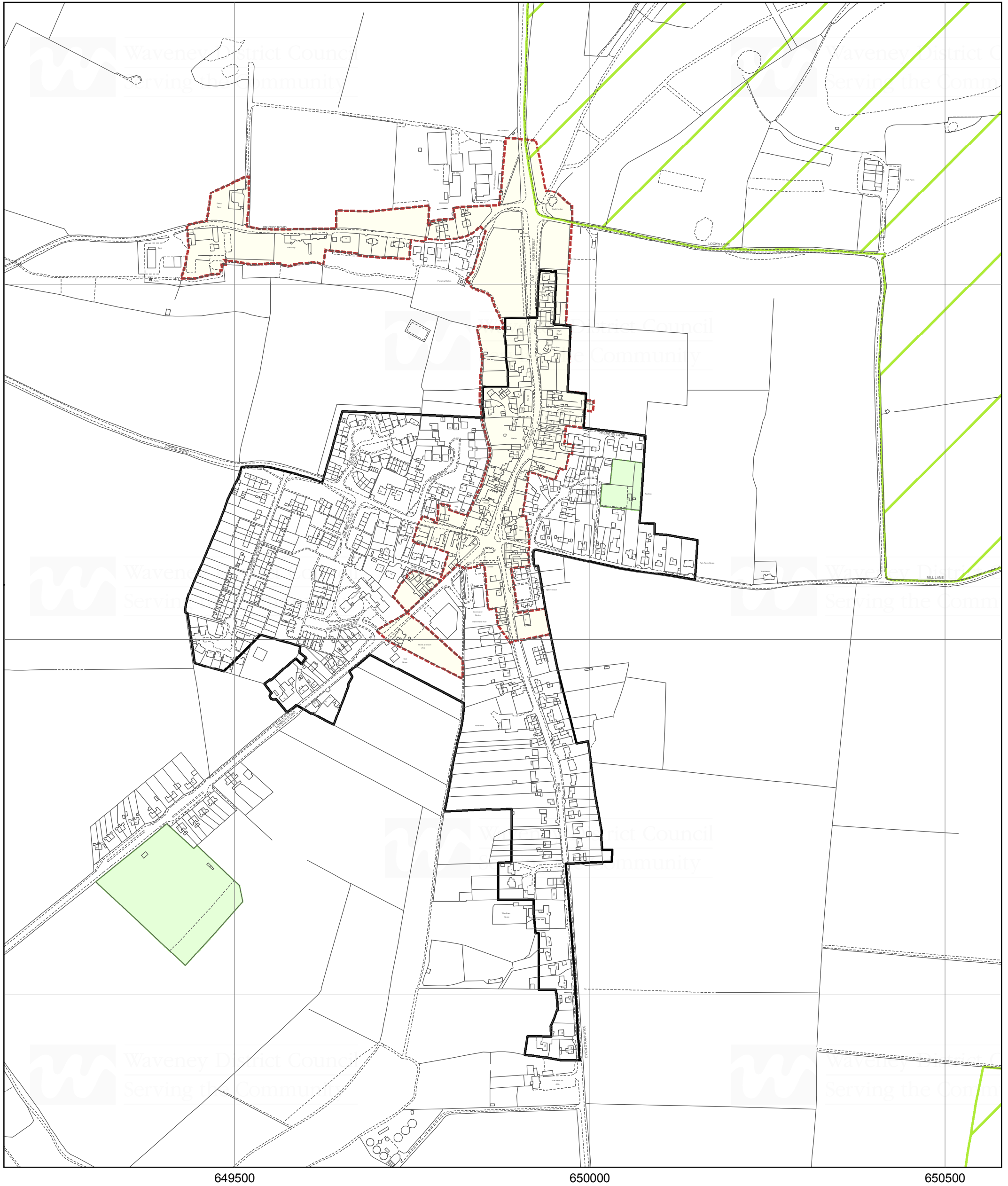


Wrentham Inset Map



1:5,000 January 2012 - To accompany the Local Development Framework

Adopted Development Plan Documents (Core Strategy, Development Management Policies, Site Specific Allocations and Lowestoft Lake Lothing and Outer Harbour Area Action Plan)



Policy references in the key preceded by 'DM' relate to the Development Management Policies

Reproduced from the Ordnance Survey mapping with the permission of the Controller of Her Majesty's Stationery Office (c) Crown Copyright. Unauthorised reproduction infringes Crown copyright and may lead to prosecution or civil proceedings. Waveney District Council Licence No. 100042052, 2012.

Flood zone information can be found on the Environment Agency website www.Environment-Agency.gov.uk/Flood. Minerals safeguarding areas can be found on the Suffolk County Council website <http://www.Suffolk.gov.uk/Environment/MineralsandWastePlanning/MineralsPlanning>

Source Information: Natural England – Area of Outstanding Natural Beauty.



Waveney District Council

Serving the Community