



# coastline

Autumn 2015

follow us @SuffolkCoastal

Suffolk Coastal District Council's newsletter

[www.suffolkcoastal.gov.uk](http://www.suffolkcoastal.gov.uk)

## A brighter future

A new slimline council has taken the reins at Suffolk Coastal District Council and has unveiled bold new plans for the future.

In the May election, Councillors were reduced from 55 to 42. Now the Leader, Cllr Ray Herring, has laid out the priorities for this administration.

"I think we can be very upbeat. There are significant challenges, but there are a lot of positive things going on in this area and we can build on the achievements of previous years," he said.

"We have a new streamlined administration, so there is a new look and feel to Suffolk Coastal. This sets the tone for what we are doing, with fewer Councillors, less staff and more partnership working. It is all about taking a business-like approach and providing a quality service to the tax payer and protecting them from increased costs," said Cllr Herring.

"We are currently developing a new Business Plan for East Suffolk, but one of the key priorities will be to provide more affordable homes in the district.

"We particularly want to allow young people to get on the housing ladder and the elderly to downsize, so people can stay in the community rather than being forced to move out.

"The Council is also committed to continuing to develop its Community Enabling approach, with a new Enabling Communities strategy being developed to dovetail with the Business Plan.

"We have also started to see real benefits from Enabling Communities, with

scores of local projects receiving support and we want to continue to build on this to create sustainable communities." Turn to page 11 to read some of the latest success stories.

"We need to adopt an enabling approach to all our business. It is not about the Council foisting things on local communities. It is about people doing things for themselves to improve their communities and the District Council to deliver the community support," said Cllr Herring.



Thomas Harvey has won the Landguard Photography competition for the second time – Turn to page 6 for more details.

Your Council

Sport

What we do

News

Community news

Around the district

Environmental news

Young People



**Our opening hours over the Christmas period**

Thurs 24th Dec (Christmas Eve)	Closed to the public from 3pm (offices closed to staff at 5pm)
Fr 25th Dec (Christmas Day)	Christmas Day - Closed
Mon 28th Dec	Bank Holiday - Closed
Tues 29th Dec	open as usual
Wed 30th Dec	open as usual
Thurs 31st Dec	closed to the public from 3pm (offices closed to staff at 5pm)
Fri 1st Jan	Bank Holiday - Closed
Mon 4th Jan	return to work as normal

# Finance key to success

The key to achieving the Council's ambitious aims is having a sound financial strategy in place.

Like all local authorities, Suffolk Coastal is faced with dwindling support from central Government. However, it is committed to continuing to support development in this area and to provide quality frontline services to local tax payers.

Suffolk Coastal is currently developing a new Medium Term Financial Strategy (2016 – 2020) linking to the Business Plan, setting out how it will deal with these challenges while achieving its aims.

"We need to reduce our dependence on Government grants by being more financially independent," explained Cllr Ray Herring. "Although it is challenging, we need to

be positive because Suffolk Coastal has a lot of things going its way. The District is doing well. Suffolk Coastal is the strongest economy in Suffolk."

"Tourism is up. Businesses are doing well. There is a lot of investment, both from the private and public sector. And this is coupled with a good quality of life."

Continued economic growth is key to the Council's ability to provide high quality services to local people, while keeping council tax down.

"Rate support grant continues to be reduced, but we are fortunate that the incentivised income, such as new homes bonus and business rate retention, means we can continue to invest in communities, but we need to keep up this momentum," explained Cllr Herring. "The simple truth



*Councillor Ray Herring, Leader of Suffolk Coastal District Council*

is that growth produces the resources we need to allow us to safeguard our frontline service, while maintaining council tax at the same level for the last five years."

"We will also build on our successful partnership working, as well as carrying out a full service review to become even more efficient, to make sure we are making best use of the tax payers money while providing good value to local people."



## Contact Us

### General enquiries

Please check our website [www.suffolkcoastal.gov.uk](http://www.suffolkcoastal.gov.uk) for any information you need. It's quick, easy, cost effective.

**Tweet and follow us:** [@suffolkcoastal](https://twitter.com/suffolkcoastal)

**Email:** [customerservices@suffolkcoastal.gov.uk](mailto:customerservices@suffolkcoastal.gov.uk)

You can call us on **01394 383789**

- Monday to Wednesday 8:45am - 5:00pm
- Thursday 9:30am - 5:30pm
- Friday 8:45am - 4:30pm

Our busiest times for telephone calls and visits are Mondays between 12-2pm each day. Calling outside these times minimises waiting times.

- **Minicom/textphone: 01394 444211**

### Visit us

We provide public access to computers with the internet available for you to use.

### Council buildings

**Customer Service Centre & Tourist Information** – Woodbridge Library, New Street, Woodbridge, IP12 1DT  
Opening times:

- 10am - 4pm on Mondays
- 9.30am - 5pm on Tuesdays
- 9am - 5pm - Wednesday to Friday
- **Citizens Advice Bureau** drop in session Tuesday 10.00am-12.00 noon

### Melton Hill reception –

Melton Hill, Woodbridge, IP12 1AU  
Opening times:

- Monday to Wednesday 8:45am - 5:00pm
- Thursday 9:30am - 5:30pm
- Friday 8:45am - 4:30pm

**Customer Service Centre & Tourist Information** – Felixstowe Library - Crescent Road, Felixstowe IP11 7BY  
Opening times:

- 10am - 4pm on Mondays
- 9am - 5pm Tuesdays to Fridays
- **SNAP Support and Advice Project** – 2nd and 4th Friday of the month 9:30am-12:30pm
- **Citizens Advice Bureau** drop in session, Monday 10am-12 noon

For **refuse collection and recycling** enquiries contact **Suffolk Coastal Norse Ltd**  
Telephone: **01394 444000**  
or Email: [scs@ncsgrp.gov.uk](mailto:scs@ncsgrp.gov.uk)

For **Port Health** enquiries, based at the Port of Felixstowe:  
Telephone: **01394 614933**.  
Email: [port.health@scpha.gov.uk](mailto:port.health@scpha.gov.uk)  
Website: [www.porthhealth.eu](http://www.porthhealth.eu)

### Tourist Information centres

- Aldeburgh 01728 453637

### Leisure centres (managed by PPL)

- Felixstowe 01394 670411
- Brackenbury 01394 270278
- Leiston 01728 830364
- Deben Pool 01394 383789

**We are closed on all bank holidays**

### Out-of-hours emergency telephone service

Contact both Suffolk Coastal and Waveney District Councils on:  
**01502 527133.**

# On the move

Work is progressing well on the building of the new headquarters at Riduna Park, Melton.

A dozen members joined Cllr Geoff Holdcroft, Chairman of the Accommodation Project Board on an informative tour of the site in September.

The steel framework, concrete floors and stairs for both buildings are now up and the sedum roof has already been installed on one building and should be put on the second (main) building shortly.



An artists impression of Suffolk Coastal's new headquarters

The buildings should be completed late spring/early summer next year, to allow for fitting out, ahead of the Council moving from its current Melton Hill headquarters next autumn.

A key part of the plan to move into the new accommodation is the upgrading of our customer services provision at Woodbridge Library, to provide a high-quality service in the heart

of the community. At the September Cabinet meeting, members supported a proposal to invest about £60,000 to improve the Customer Service provision at the library.

For the latest information on the accommodation project see: [www.suffolkcoastal.gov.uk/yourcouncil/accommodationproject](http://www.suffolkcoastal.gov.uk/yourcouncil/accommodationproject)



Ray Herring, Leader of Suffolk Coastal, Cllr Geoff Holdcroft, Deputy Leader and Cabinet Member for Resources and Andy Jarvis, Strategic Director



Work is progressing well

## Tip us off!

Residents are being urged to be even more vigilant against those who are destroying the beauty of our district by fly-tipping and leaving behind dog mess and litter.

Suffolk Coastal [www.suffolkcoastal.gov.uk](http://www.suffolkcoastal.gov.uk)

If you are affected by litter, fly-tipped waste, or dog mess on public land, please call us on: 01394 444000 or report it to us online where you will find a fly-tipping a littering reporting form:

[www.suffolkcoastal.gov.uk/yourhome/waste/fly-tipping](http://www.suffolkcoastal.gov.uk/yourhome/waste/fly-tipping)

Information that enables us to identify an alleged offender can also be

reported to us – as this is a vital part of our efforts to tackle waste crime, for a guide on how you can report offenders, visit: [www.greensuffolk.org/fly-tipping](http://www.greensuffolk.org/fly-tipping)

# Reopening of the **Seafront Gardens**



*Thank you to everyone who came along to the reopening of the Gardens*

The majority of the Felixstowe Seafront Gardens were re-opened on Wednesday 26 August 2015.

Seven of the eight gardens are now open to the public and work is continuing to install the iconic wooden-framed shelter in the Town Hall Garden. The remaining works to the gardens are set to be completed by the end of the year.

The Gardens will continue to improve, as the plants bed in and mature and a 10-year maintenance plan is in place, agreed with the Heritage

Lottery Fund, to ensure the Gardens are kept in pristine condition; including plans to obtain 'Green Flag' status from the Civic Trust.

Cllr TJ Haworth-Culf, Suffolk Coastal's Cabinet Member with responsibility for Customers, Communities and Leisure, said: "It is important that we do not underestimate the importance of this project to Felixstowe. We need to look to the future and take pride in what we are helping to achieve in Felixstowe."

"This is a long-term invest-

ment in the future prosperity of Felixstowe. This is just one of many exciting developments happening in

the town, which link to the positive work now being done through Felixstowe Forward." - See opposite.



*Seven of the eight gardens are now open to the public*

## Martello Tower 'P' **project funding boost**

Plans to restore Felixstowe's iconic Martello Tower 'P' to its former glory are a step closer thanks to a £50,000 funding boost.

Tower 'P' is one of four Martello Towers on the Felix-

stowe coast and one of 140 built around Britain as small defensive forts during the Napoleonic wars at the start of the 19th Century.

The funding from grant-giving body WREN's FCC

Heritage Fund will be used to repair the render on the building and fix the leaking roof.

Once complete, owners Suffolk Coastal District Council plan to open up the

tower so that members of the public can learn more about its heritage.

Suffolk Coastal District Council is providing £90,000 to make up the total project cost of £140,000.

## Park open for play

The leisure and recreation space at Martello Park is now open and has been a huge draw for families with young children visiting Felixstowe.

Work was completed over the summer to install £150,000 of new play equipment including specialist equipment to allow more inclusive play for mixed abilities and wheelchair accessible equipment.

The works are part of the on-going development to the South Seafront of Felix-

stowe which aim to make the area more accessible for everyone. Recent improvements include new toilet facilities which include additional facilities for disabled people under the Changing Places scheme.

Cllr TJ Haworth-Culf, Suffolk Coastal District Council's Cabinet Member with responsibility for Customers, Communities and Leisure, said: "I'm really pleased to see that the play area is now open again to the public. There is a real community feel about this area and I



Martello Park opened in time for the August bank holiday

think the improved facilities and finishing touches really

tie the whole of Martello Park together."

## To a brighter future

A new initiative was launched in April to drive economic development and help build a new era of prosperity in Felixstowe.

Felixstowe Forward replaces and builds on the achievements of its predecessor - Felixstowe Futures.

The Felixstowe Forward initiative is a joint venture between Suffolk Coastal District Council, Felixstowe Town Council and Suffolk County Council which is working with a wider range of partners to tackle the town's key challenges and bring in improvements.

Felixstowe Forward Change Director, Helen Greengrass, said: "I believe adopting a place-based approach which supports local communities and engages in local initiatives will ensure Felixstowe will be ideally placed to work together to make the most of all opportunities to make the

Suffolk Coastal [www.suffolkcoastal.gov.uk](http://www.suffolkcoastal.gov.uk)



Helen Greengrass, Felixstowe Forward Change Director

town a better place to live, work and visit."

For information about our work, why not sign up to our newsletter? You can email:

[felixstowe.forward@east-suffolk.gov.uk](mailto:felixstowe.forward@east-suffolk.gov.uk), or phone 01394 444576.

Follow us on twitter @felixstowe4ward

## Taking the town forward



In July, people attended a successful event in the town to help them learn more about the opportunities and challenges in the town and encourage them to share their ideas.

Representatives from a wide and diverse range of public, private and the community and voluntary sectors took part in a series of workshops which explored tourism, economic trade and prosperity in Felixstowe.

The event will now help form a Town Improvement Plan which sets out what needs to be done to improve Felixstowe's future.

## Help identify short stay sites

Landowners and other interested parties are being asked to suggest sites that could be used for short stay stopping sites for the Gypsy and Traveller community.

There are currently no short stay stopping sites in the county and the aim is to set up three in Suffolk in a bid to reduce the number of illegal encampments which

are costly to deal with.

Between 2009 and July 2015, Suffolk has seen 280 unauthorised Gypsy and Traveller encampments. These encampments cost the taxpayer tens of thousands of pounds each year to deal with.

Other counties who have established short stay

stopping sites have seen a significant reduction in unauthorised encampments.

The Call for Sites closes on 15 November. All sites submitted will be carefully assessed against the criteria so the Public Sector Leaders Group can decide which sites to put out for consultation in December 2015. In

February 2016, the Public Sector Leaders Group will decide which sites to put forward to the planning process, with the aim of having the sites up and running by the end of 2016.

The Call for Sites booklet, a series of FAQs and details of how to respond are all available at: [www.suffolk.gov.uk/shortstay](http://www.suffolk.gov.uk/shortstay)

## Devolution

At its Full Council meeting in September, Suffolk Coastal voted to endorse the Suffolk Devolution Proposal, which has been forwarded to Government by the Suffolk Public Sector Leaders' Group.

This is a fast-developing important issue for this county. Devolution is about

the transfer of powers and responsibilities from central government to the local level. It is not something dictated from the centre, but it is for each area – Suffolk in this case – to make a 'bid' for what it believes should be devolved to us. Suffolk has been encouraged by the government to submit a proposal, which reflects well

on our strong track record of collaborative working in this county.

This is not just confined to Suffolk, we are committed to continued and enhanced cross-boundary working across East Anglia, are supportive of proposals from Norfolk and will be developing a joint approach around

growth and productivity with councils in Norfolk, New Anglia, Greater Cambridge and Greater Peterborough Local Enterprise Partnerships.

To see the summary of the initial bid, see: [www.suffolkcoastal.gov.uk/yourcouncil/a-devolution-proposal-for-suffolk](http://www.suffolkcoastal.gov.uk/yourcouncil/a-devolution-proposal-for-suffolk)

## Landguard Photography competition 2015

The winners of the Landguard photography competition have been announced!

The overall "Judges Choice" winner was Thomas Harvey - who has become the first person to win the competition twice in a row, having won last year also. Thomas receives a cash prize of £50 to put towards photographic equipment, alongside a framed copy of his photograph.

Now in its 5th year the hugely popular Landguard Photography Competition, organised by the Landguard Partnership, allows both professional and amateur

photographers to take their favourite scenes of the peninsula at Felixstowe.

Once again, the overall quality and variety of photographs this year was outstanding, with around 800 people voting online for their favourites. From this the 12 winning photographs were selected - four from each of the three competition categories: Black and White, Abstract and Weather. Thomas's photograph was in the weather category.

Thank you to everyone who took the time to enter their photographs.

To see all 12 winning

photographs in the competition, visit:

[www.discoverlandguard.org.uk/landguard-photography-competition-2015](http://www.discoverlandguard.org.uk/landguard-photography-competition-2015)



Marc Holiday was a winner in the Abstract category

## Wardens celebrate

The Tree Council and its volunteer tree champions celebrated 25 years of the national Tree Warden Scheme in September at a special conference organised by The Tree Council and Suffolk Coastal District Council.

The Tree Warden Scheme was launched in 1990 in the wake of the devastation caused by the great storm and is now a UK-wide force of local volunteers, who act as the "eyes and ears" for trees in their communities – both rural and, increasingly, urban. Today there are thousands of volunteers in 150 local networks in England, Wales and Scotland.

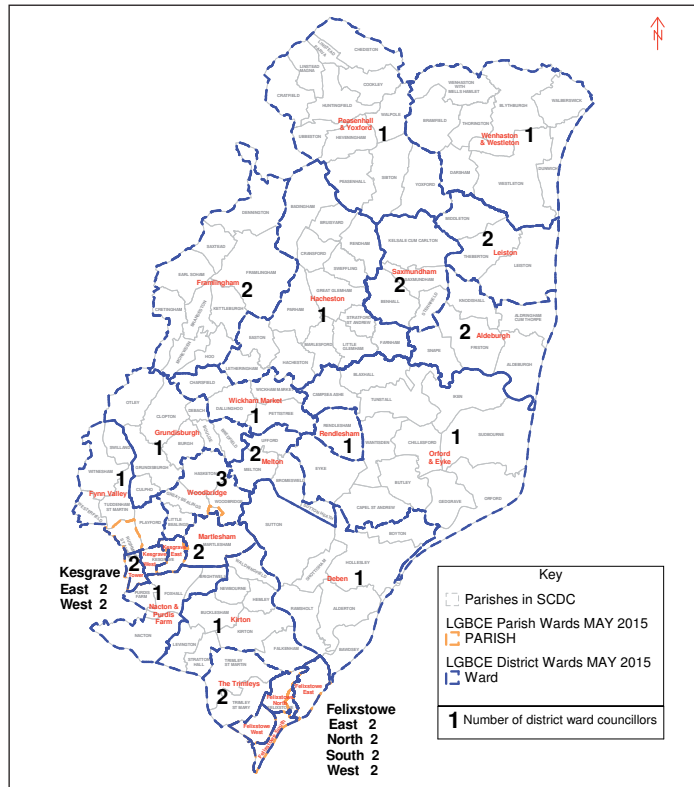
## New electoral wards in Suffolk Coastal

Suffolk Coastal District Council is now represented by 42 councillors following the elections on 7 May 2015 - 13 fewer than previously.

Those councillors will serve for the next four years and will represent 11 single-member wards, 14 two-member wards and one three-member ward across the district - 26 electoral wards in total.

The Conservatives have control of the Council with 37 councillors, there are 2 Lib Dem councillors, 2 Independents and 1 Labour councillor.

Turn over for contact details of your ward member...



Map showing new electoral wards in Suffolk Coastal

## Are you registered to vote?

If you have moved house recently, don't forget to register to vote at your new address.

It's now easier than ever to register - you can update your details in minutes online at: [www.gov.uk/register-to-vote](http://www.gov.uk/register-to-vote) or you can telephone Suffolk Coastal's Customer

Services Team on 01394 444422 or email: [elections.scdc@eastsoffolk.gov.uk](mailto:elections.scdc@eastsoffolk.gov.uk) You will need to have your National Insurance number to hand as part of your application.

Registering to vote not only enables you to vote in forth-



coming elections and referendums - it can also improve your credit score.

For more information about registering to vote, visit: [www.suffolkcoastal.gov.uk/elections](http://www.suffolkcoastal.gov.uk/elections)

## New look website

Our website is currently being updated - look out for a new look and feel coming in the New Year.

The website will be clearer and more easy to use as well as being more accessible through smartphone devices and tablets.

Initially it will be a cosmetic

refresh taking across all of the existing transactional bits you can already do online such as searching Planning Applications, making payments and reading papers and minutes - but longer term we will be working to develop and increase our online services in a bid to reduce costs and spend more time working

face to face with people who need it most.

Once we have launched the new website, we'd love to hear your feedback. You can also send us any comments about our existing site and things you'd like to see in the future, please email: [web@eastsoffolk.gov.uk](mailto:web@eastsoffolk.gov.uk) or [www.suffolkcoastal.gov.uk](http://www.suffolkcoastal.gov.uk)

## New Suffolk Coastal Cabinet

At its annual meeting on Thursday, 28 May, 2015, the Council made a number of key decisions including the re-election of the Leader of the Council, the appointment of the Council's Cabinet and the election of the Chairman of the Council.

After the Conservative party maintained overall control at the local elections, Cllr Ray Herring was re-elected as Leader of the Council, a position which he has held since 1999 and will hold for the next four years.

Cllr Herring also announced his Cabinet which helps to make decisions in the day-to-day running of the Council.

The new Cabinet posts are:

**Leader** - Cllr Ray Herring

**Deputy Leader and Cabinet Member for Resources**  
- Cllr Geoff Holdcroft

**Cabinet Member for Economic Development and Coastal Management**  
- Cllr Andy Smith

**Cabinet Member for Community Health**  
- Cllr Steve Gallant

**Cabinet Member for Customers, Communities and Leisure**  
- Cllr TJ Haworth-Culf

**Cabinet Member for the Green Environment**  
- Cllr Carol Poulter

**Cabinet Member for Housing**  
- Cllr Richard Kerry

**Cabinet Member for Planning**  
- Cllr Tony Fryatt



## Councillors 2015-2019

**Conservative 37**

**Lib Dem 2**

**Independent 2**

**Labour 1**

**Deben**  
  
**Christine Block**  
01394 411660

**Felixstowe East**  
  
**Steve Gallant**  
01394 276336

**Felixstowe East**  
  
**Doreen Savage**  
01394 285895

**Felixstowe North**  
  
**Stephen Bloomfield**  
01394 216262

**Felixstowe West**  
  
**Tracey Green**  
07759 218476

**Framlingham**  
  
**Christopher Hudson**  
07986 844259

**Framlingham**  
  
**Paul Rous**  
01728 639000

**Fynn Valley**  
  
**Robert Whiting**  
07714 598155

**Kesgrave West**  
  
**Stuart Lawson**  
01473 620738

**Kesgrave West**  
  
**Debbie McCallum**  
01473 613363

**Kirton**  
  
**Susan Harvey**  
01394 448780

**Leiston**  
  
**Tony Cooper**  
01728 830181

**Melton**  
  
**Jane Day**  
07551 702336

**Nacton and Purdis Farm**  
  
**Nicky Yeo**  
01473 655624

**Orford and Eyke**  
  
**Ray Herring**  
01728 746337

**Peasenhall and Yoxford**  
  
**Stephen Burroughes**  
01986 785283

**Tower**  
  
**Mark Newton**  
07788 456641

**The Trimleys**  
  
**Graham Harding**  
01394 278936

**The Trimleys**  
  
**Richard Kerry**  
01394 275636

**Wenhaston and Westleton**  
  
**Raymond Catchpole**  
01728 660562



The **Leader** of Suffolk Coastal is **Cllr Ray Herring**.  
 For full contact details and information about committees, visit:  
[www.suffolkcoastal.gov.uk/yourcouncil/councillors](http://www.suffolkcoastal.gov.uk/yourcouncil/councillors)

**Aldeburgh**



**Maureen Jones**  
01728 453915

**Aldeburgh**



**Terry-Jill Haworth-Culf**  
07899 063702

**Felixstowe North**



**Mike Deacon**  
01394 211146

**Felixstowe South**



**Peter Coleman**  
01394 284968

**Felixstowe South**



**Andy Smith**  
01394 283283

**Felixstowe West**



**Stuart Bird**  
01394 275128

**Grundisburgh**



**Tony Fryatt**  
07887 988271

**Hacheston**



**Carol Poulter**  
07833 441349

**Kesgrave East**



**Geoff Lynch**  
01473 610577

**Kesgrave East**



**Susan Mower**  
07778 250848

**Leiston**



**Ian Pratt**  
01728 831184

**Martlesham**



**Chris Blundell**  
01473 613360

**Martlesham**



**John Kelso**  
01473 631682

**Melton**



**James Bidwell**  
01394 385193

**Rendlesham**



**Michael Bond**  
01394 388611

**Saxmundham**




**Phillip Dunnnett**  
07833 441343

**Saxmundham**



**John Fisher**  
01728 603144

**Tower**



**Deborah Dean**  
07519 918622

**Wickham Market**



**Mark Amoss**  
07917 024541

**Woodbridge**



**Colin Hedgley**  
01473 738468

**Woodbridge**



**Geoff Holdcroft**  
01394 610548

**Woodbridge**



**Patti Mulcahy**  
07931 788351

# What do we do for you?

Suffolk Coastal District Council is responsible for providing local services and facilities for the Suffolk Coastal district.

But what do we really do for you? In your everyday life you probably don't think about how the district council works for you,

but behind the scenes we provide a huge range of services which benefit everyone from businesses to individuals, community groups, the environment, to nature.

The money from the council tax you pay helps to pay for services:

- Waste and recycling
- Electoral registration
- Environmental health
- Leisure and recreation facilities
- Libraries
- Local planning
- Local transport
- Council Tax collections
- Housing
- Parks and public places

- Regulation of local business
- Economic Development

In the next few pages we want to show you some of the good work being done by the council, but more information about all the services we provide, please visit: [www.suffolkcoastal.gov.uk](http://www.suffolkcoastal.gov.uk)

## The importance of apprenticeships

Suffolk Coastal's operational partner, Suffolk Coastal Norse, has a great track record with apprentices and believes they can be a great benefit to both young people and employers.

Mark Emms, Suffolk Coastal Norse Managing Director, said: "Young people are the future and apprenticeships are a great way of getting them into our organisation.

"We're a customer-focused business and we depend on the quality of our frontline staff, so it's really important we fill skills gaps."

In 2008, SCN took on three apprentices in its fleet maintenance team based at Ufford, near Woodbridge, as part of a long-term strategy to replace vehicle technicians who have all now retired.

All three have now successfully completed their apprenticeships and one, Toby Chapman, is now the company's workshop team leader.

Toby started his apprenticeship aged 17, is now fully qualified and working his way

up through the company. He said: "An apprenticeship is a great way into an industry you want to work in, I would definitely recommend it to someone looking to develop a career."

A recent new addition to the workshop is apprentice Vehicle Technician Joseph Tomkins, who is undertaking Mechanics Level 3. He attends college one day a week and receives on-the-job training.

Fleet Manager Chris Davison says the apprenticeships have rejuvenated the vehicle workshop: "We have a new, younger generation of staff who have lots of ideas and are passionate and enthusiastic. They also challenge us – with things that have been done a certain way for years so we have embraced change and it's been great for us."

SCN is a subsidiary of Norse Commercial Services, a company committed to apprenticeship schemes. In 2014 this resulted in Norse receiving the accolade of Highly Commended in the Newcomer Employer of the Year (Large) category for



Joseph Tomkins, a Vehicle Technician, is undertaking an apprenticeship in Vehicle Mechanics Level 3.

the Central Eastern region National Apprenticeship Awards.

Mark said: "Apprenticeships are a vital part of the company's future. I am immensely proud of these young people

and am confident they will help us to maintain the skilled workforce we need to deliver our services."

To find and apply for apprenticeships, visit: [www.gov.uk/apply-apprenticeship](http://www.gov.uk/apply-apprenticeship)

[@SuffolkCoastal](https://twitter.com/SuffolkCoastal)

# Supporting our local communities

We believe local people know what's needed to make their communities better places to live and work – that's why the Council has a set of tools to support our communities.

The Enabling Communities Budget gives each councillor £5,500 to spend on supporting community projects, local organisations and initiatives in 2015/16. Our councillors have made

fantastic progress so far.

If you want to apply for funding, please contact your relevant Ward Councillor. If you have any general enquiries you can contact

Wil Gibson on 01394 444771 or email: [wil.gibson@eastsuffolk.gov.uk](mailto:wil.gibson@eastsuffolk.gov.uk)

Here's a round-up of some of the most recent successes:

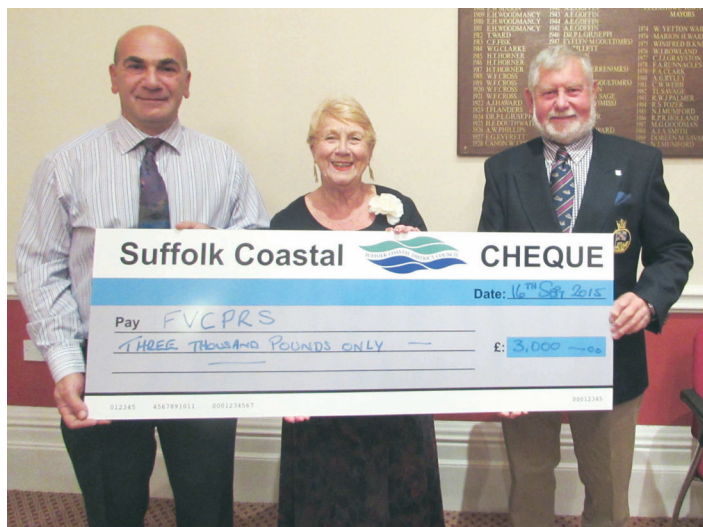
## Support given to rescue service

Two Suffolk Coastal councillors have given funding to a vital rescue service in Felixstowe.

Cllr Steve Gallant and Cllr Doreen Savage together awarded £3000 to support the Felixstowe Volunteer Coast Patrol Service (FVCPRS) which works to protect and preserve life at sea and rivers in the Felixstowe area.

The funding will help support the service which has been under threat due to a lack of funding.

Both Cllr Steve Gallant and Cllr Doreen Savage said: "The patrol service is an incredibly valuable asset to the residents and visitors of Felixstowe and we were very proud to award this money to the service which means so much to the community."



Cllr Steve Gallant, Cllr Doreen Savage and John Cresswell from the Felixstowe Volunteer Coast Patrol Service

## Budget helps care for older people



The Golden Age Fair in Woodbridge

A Golden Age Fair aimed at over 50s was held at Woodbridge in September.

The fair was supported through Cllr Geoff Holdcroft's budget and organised by the Rural Coffee Caravan and aimed to bring useful advice, information and support together for residents who may not normally have access to it.

Over 80 people attended the

event to seek information and advice such as how to prevent falls, took part in health checks and also tucked into some local produce. People leaving said it was really useful, very well organised, warm and friendly and very welcoming.

For more information about Golden Age Fairs or the work of the Coffee Caravan visit [www.ruralcoffeecaravan.org.uk](http://www.ruralcoffeecaravan.org.uk) or email [coffee.caravan@btinternet.com](mailto:coffee.caravan@btinternet.com)

## Coin counter available to charities

Cllr Steve Gallant and Cllr Stephen Bloomfield together gave £2000 from their budgets to the Felixstowe Carnival Committee to support them in purchasing a coin counter. The Committee paid the rest of

the costs for the equipment from their own funds.

Part of the agreement means that the equipment is also available to other charities within the district on a loan basis.

Cllr Steve Gallant, Cabinet Member for Community Health, said: "We wanted the equipment to be used as much as possible so I would encourage any charity in the district to get in touch with me if they would like to

borrow the coin counter." Charities based in Suffolk Coastal who would like to make use of the equipment, should get in touch with Cllr Gallant, (01394) 276336 or email: [steve.gallant@suffolkcoastal.gov.uk](mailto:steve.gallant@suffolkcoastal.gov.uk)

## Suffolk Coastal youth council

Suffolk Coastal District Council is committed to working with schools to address some of the issues they face, such as improving levels of educational attainment, raising aspiration, building stronger links between other schools and outside agencies and preparing young people for life after they leave school.

Breakfast meetings have been introduced between schools and the Council to discuss some of the issues faced by schools and the Active Communities Team are also looking to develop a youth-led council for high schools in Suffolk Coastal.

This will help provide a voice for young people and encourage their involvement in important decision processes that assist with the development of local services that affect them.

Councillor TJ Haworth-Culf, Cabinet Member for Customers, Communities and Leisure at Suffolk Coastal District Council, said: "The introduction of breakfast meetings between schools and the Council have been received well so far and we have more planned for the future.

"We are now looking for input from schools to help us create a Suffolk Coastal Youth Council, if you would like your school to get involved, please get in touch."

For more information, please contact **01394 444321** or email **[gillian.benjamin@eastssuffolk.gov.uk](mailto:gillian.benjamin@eastssuffolk.gov.uk)**

# Helping young people shine



Children taking part in this year's Operation Camouflage

The children's military-themed summer activity scheme Operation Camouflage returned for the eighth year in August.

Children between 8-16 years from Suffolk Coastal and military families based at Colchester, Wattisham and

Woodbridge took part in the four day event at Rock Barracks in Sutton.

The aim of the programme, organised by Suffolk Coastal District Council and the Army Welfare Service (AWS) with funding contributed by ABF The Soldiers' Charity, is to

bring together young people from different backgrounds to challenge themselves and develop new skills.

Activities this year included graffiti art, cycling skills, climbing, handball, air rifle shooting, archery tag and baking.

## Woodbridge celebrates military links

Suffolk's airborne engineers paraded through Woodbridge for the first time under their new name in July.

The 23 Parachute Engineer Regiment, which is based at Rock Barracks in Woodbridge, marched through the town to exercise its Freedom of the Town for the first time since its name was changed to reflect its role, history and ethos.

After the parade, the Regiment hosted veterans

from the Suffolk Coastal area for lunch in Elmhurst Park. Representatives from the MoD's Service Personnel and Veterans Agency and military charities including the Royal British Legion, SSAFA, Help 4 Heroes, Blind Veterans UK, and BLESMA the Limbless Veterans were on hand to give advice and link veterans to support available locally.

*The 23 Parachute Engineer Regiment marched through Woodbridge in July*



[@SuffolkCoastal](https://twitter.com/SuffolkCoastal)

# Your place, your future – have your say

Suffolk Coastal District Council is urging local people to have their say on shaping the future development of the area.

The Council has now published two Preferred Options Consultation documents which will be used to help shape the future development in the district:

- Site Allocations and Area Specific Policies Develop-

ment Plan Document,  
 • Felixstowe Peninsula Area Action Plan.

These two documents will identify sites for future housing and business development in the district.

Councillor Tony Fryatt, Cabinet Member for Planning, said: "These documents are an important part of the Suffolk

Coastal Local Plan as they will direct future development into the most sustainable locations over the next 10-15 years.

"I would urge all communities to consider what these proposals mean to them. It is imperative that we hear your views and that we listen to them!"

Comments on the Preferred



Options documents can be made until Friday 30 November 2015 at 5pm, visit: [www.suffolkcoastal.jdi-consult.net/localplan/](http://www.suffolkcoastal.jdi-consult.net/localplan/)

## Flood funding success



*Flooding in December 2013*

Homes and businesses affected by the 2013 floods were given the opportunity to apply for a grant of up to £5,000 to make their properties more resilient and resistant against flooding in the future.

The aim of the grant was to help people with the cost of buying and installing new measures to reduce the chances of flooding in the first place, or limit the damage should they be flooded in the future. This included things like a new

driveway barrier or replacing doors and windows with water-resistant alternatives, or moving electricity sockets to a safer level.

Both Suffolk Coastal and Waveney District Councils directly supported and delivered the scheme on behalf of the Government, with guidelines set nationally by Department for Environment Food and Rural Affairs.

Overall, Suffolk Coastal received 52 applications, totalling £202,267.27.

## Sky lanterns ban reminder

Suffolk Coastal is reminding residents not to set off sky lanterns or mass release of balloons in the district.

Sky lanterns and balloons are banned from all Suffolk Coastal land due to the fire hazard and the risk they pose to wildlife and livestock. When released out to sea, they also cause significant risk to the operation of coastal rescue services and create litter.

A code of conduct has been adopted for staff and councillors and is included in the terms for leasing all Suffolk Coastal land.

We encourage landowners, parish and town councils and event organisers to consider doing the same.

If you are thinking of a mass balloon or sky lantern release to mark a special occasion, visit our website for some alternative suggestions: [www.suffolkcoastal.gov.uk/sky-lanterns-and-balloons](http://www.suffolkcoastal.gov.uk/sky-lanterns-and-balloons)

## Thinking of building your own home?

The Self-Build and Custom Housebuilding Act 2015 requires local councils in England to keep a register of people who are interested in self build or custom build projects in their area.

By signing up to the register, you will help the Council find out more about the demand for custom and self build plots in Suffolk Coastal, where people would like to live and the type of house that they would like to build. The information will be used to explore ways people and plots can be brought together.

To register your interest for a custom or self build plot, please complete the online registration form at: [www.suffolkcoastal.gov.uk/selfbuild](http://www.suffolkcoastal.gov.uk/selfbuild)

To find out more about the project, or if you have any queries, please contact: Jim Selby, **01394 444557** or email: [suffolkcoastallocalplan@eastsuffolk.gov.uk](mailto:suffolkcoastallocalplan@eastsuffolk.gov.uk)

# Chairman's Challenge



At the Grundisburgh Village Show in July

Suffolk Coastal District Council's new Chairman, Councillor Susan Harvey has set herself a challenge - to visit every parish in the District during her term in office.

And now she is appealing for

local event organisers to let her know what is going on in the area, so she can pay them a visit.

She said: "I believe one of our strengths of this area is our great community spirit, so I



A visit to Woodbridge Rugby Club



Chairman Cllr Susan Harvey plans to visit every parish in the district

have set myself the challenge of visiting all 118 parishes in Suffolk Coastal during my year as Chairman. There are a lot of great things going on out there in the communities. I want to do my bit to support them by getting out to as many events as possible."

Cllr Harvey has already visited 52 out of 118 parishes, but is keen to add more to her list!

"I have received a great welcome at all the events I have already attended. I would like to say a huge thank you to all the people who volunteer and organise events in their villages whether it is arranging fetes, coffee mornings or befriending neighbours. They all play such an important part in our communities."

If you have an event you think Cllr Harvey should attend, please send details to: [chairman@suffolkcoastal.gov.uk](mailto:chairman@suffolkcoastal.gov.uk)

## Making Food Waste History!

Suffolk Recycling joined the Aldeburgh Food and Drink Festival once again this September.

Suffolk Waste Partnership officers and Suffolk Master Composter volunteers were on hand to advise festival-goers about home composting, food waste digester systems and how they can reduce food waste and save money at the same time.

This year, people had a chance to make great tasting smoothies by using up overripe, unwanted fruit instead of letting it go to waste. Not only did they create a healthy snack, they also did it in an environmentally friendly way using pedal power!

For more food waste tips and recipe ideas, visit: [www.lovefoodhatewaste.com](http://www.lovefoodhatewaste.com)



People made smoothies using unwanted fruit and pedal power

## Suffolk Waste Partnership inspires re-use at Latitude Festival

The Suffolk Waste Partnership was proud to be part of 10th anniversary celebrations at Latitude this year and ran a suite of recycling and re-use craft activities in the Suffolk

Recycling stand in the Children's' Area.

The festival provided a fantastic opportunity for the Suffolk Recycling Team to showcase the great recycling

being done throughout the county.

Over 500 children and their parents, carers and friends visited the Suffolk Recycling stand over the weekend

(Thursday 16 - Sunday 19 July) to create jewellery, crafts and accessories all using recycled and reused materials.

# Help keep our district clean and green



Volunteers helping to clean the beach at Felixstowe in September

As winter approaches, it's time to give our environment a well-deserved clean.

Nobody likes to see litter spoiling our beautiful district – so why not do your bit by picking up any litter you come across and help make a real difference .

Cllr Carol Poulter, Cabinet Member for Green Environment, said: "I'm very proud

of the hard work of people in Suffolk Coastal to keep our environment clean, however, we can all do a bit more to help keep Suffolk Coastal looking beautiful.

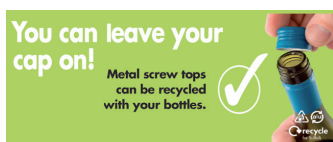
"If you're out enjoying a walk why not bring along a litter pick stick and bag with you or organise a clean-up within your community?

"All you need to do is decide

where and when you'd like to pick litter, and register your activity with us."

Our partners Suffolk Coastal Norse will provide disposable gloves and sacks for recyclable and non-recyclable litter and can also collect any litter collected. Just call **01394 444000**, or visit: **[www.suffolkcoastal.gov.uk/yourhome/waste/fly-tipping/litter](http://www.suffolkcoastal.gov.uk/yourhome/waste/fly-tipping/litter)**

## You can leave your cap on!



Did you know that you can leave the caps on the bottles and jars you recycle at local glass banks?

The Suffolk Waste Partnership has launched a campaign to encourage residents to recycle the aluminium screw tops from glass bottles and jars such as those for wine, spirits and

*Suffolk Coastal* [www.suffolkcoastal.gov.uk](http://www.suffolkcoastal.gov.uk)

cooking ingredients, along with the glass bottles and jars on which they came.

By screwing the tops back onto empty glass bottles and jars and recycling them at one of the 1500 glass recycling banks in Suffolk, you are helping to transform them into something new, including new bottles, metal packaging, mobile phones and car parts.

Cllr Clive Arthey, Chair of the Suffolk Waste Partnership,

said: "The SWP are always looking for ways to improve recycling. Aluminium is a valuable recyclable metal and can be recycled over and over again. Thanks to modern sorting methods, it is now easy to recover the metal tops from glass bottles and jars, so they can be taken to the bottle bank with the tops on and we can all help to recycle even more."

For more information about what you can recycle, visit: **[www.greensuffolk.org](http://www.greensuffolk.org)**

## Commercial waste services from Suffolk Coastal Norse

Suffolk Coastal Norse, the Council's waste and recycling partner, offer a complete waste and recycling service to cover all of your business needs effectively.

Their wide range of recycling options can help your business to help the environment and may also save you money.

Flexible collection options and bin sizes will meet the needs of your business, however large or small. The service ranges from skips (including rear end loaders where required), through to wheeled bins in a range of sizes.

Suffolk Coastal Norse offer a comprehensive range of recycling options for your waste, including, if required, separate collection of glass, paper, cardboard and compostable waste.

The wheeled bin and rear-end loader skip services operate on scheduled weekly rounds, so you always know what day your waste will be collected. Collections can be more or less frequent than once a week, to suit your business needs. Being locally based means SCN can respond quickly and flexibly to any unexpected needs your business may have.

If you aren't sure of the service you require or would like more advice, they are happy to make a site visit to tell you about the services they could offer your business.

For more information call **01394 444000** or email **[scs@ncsgrp.co.uk](mailto:scs@ncsgrp.co.uk)**

# Women's Tour success in Suffolk

The Women's Tour has proved to be a fantastic success once again, providing an economic boost of £1.1M for Suffolk.

The four-day race which took place over five stages between Wednesday 17 June and Sunday 21 June, brought world-class women's cycling to the UK for the second year and featured the world's top riders competing against Britain's Olympic heroines.

A report looking at the financial impact of the Tour shows an estimated 20,000 people attended the finish of Stage 1 in Aldeburgh, with the riders following a route starting in Bury St Edmunds and 268,000 tuned in to watch Stage 1 on TV.

Lizzie Armitstead won stage one and Lisa Brennauer took



Lizzie Armitstead won stage one and Lisa Brennauer took overall victory for the Aviva Women's Tour.

overall victory for the Aviva Women's Tour.

Cllr TJ Haworth-Culf with responsibility for Customers, Communities and Leisure, said: "We were delighted to be a part of the Women's

Tour for the second year running.

"The Tour provided a fantastic platform for us to showcase the wonderful place we live in and gave a great boost to our tourism over the summer.

"I'd like to thank everyone who came out in Aldeburgh as well as those who lined the route through the district. It was great to see so many people of all ages showing their support for this exceptional event."

## Suffolk Coastal getting fitter

People across Suffolk Coastal are getting more active, latest figures have revealed.

Places for People Leisure who run leisure facilities in Suffolk Coastal have reported a 4% increase in participation rates.

More people in the district have been swimming, taking aerobics classes and making use of the gyms.

Health initiatives such as MyZone, SWIMTAG and the continuation of under 8s free swimming are some of the

things encouraging more people to get active in the district.

New partnerships have also helped encourage more up take in sport. These include Age UK Suffolk's dementia friendly exercise classes, holiday camps delivered by Premier Sport, classes introduced by Ipswich Hospital to support cancer patients and England Triathlon's partnership to put on GO TRI training and events.

Suffolk Coastal District Council recently adopted our



More people in the district are taking up swimming to stay active

Leisure Strategy, which sets out how we plan to make improvements to the leisure provision across the district through our partner agencies over the next 10 years.

The aim is to increase participation in all forms of leisure.

It is not just about sport, it is about encouraging people to be more active.

If you would like to find out more about what's going on at your local leisure centre, visit: [www.suffolkcoastal.gov.uk/yourfreetime/leisure](http://www.suffolkcoastal.gov.uk/yourfreetime/leisure)

This edition of coastline is also available in large print, on audio tape or CD for blind or partially-sighted residents. Call 01394 444361