

intouch

W I T H W A V E N E Y



Inside this issue:

Your Environment

How Waveney District Council's Environmental Services Team works hard to make local life better

Food For Thought

More great innovation from WDC's groundbreaking Recycling Team

Leisure and Play Consultations

Asking YOU what you like to do: from theatres and swimming pools to playgrounds and parks

Sunrise Success

Royal Approval for the multi-million pound Sunrise Scheme



Waveney District Council
Serving the Community

Listening to You



A 'General Satisfaction Survey' which asked 4,000

Waveney households to express their views on WDC's performance has been assessed and Cllr Mary Rudd, Portfolio Holder for Corporate Governance believes the results are both informative and helpful.

She said: "We are extremely grateful that so many residents took the time to complete this questionnaire and the information they provided will be extremely useful.

• WAVENEY •

"This authority is on an improvement journey and the fact that over twice as many more people are satisfied than dissatisfied with the Council's performance is very encouraging. We

are also pleased with our high rating for customer services and the positive views that residents expressed about recycling and the authority's cultural and recreational services.

"Nevertheless, we are equally determined to perform better in areas where residents believe there should be improvements and we will use the information provided to consider how best we can further improve outcomes for the people of Waveney."

Everyone who took part in the survey was also entered in to a prize draw with a prize of £100 for the winner. Charles Herbert was the lucky winner and is pictured here receiving his cheque from Cllr Rudd.



Making payments

You can now pay for most Council services without having to visit Council offices or sending a cheque! Payments can be made via Direct Debit or over the telephone using our automated service - just call 01502 511805 and have your debit or credit card ready. Or you can head to the Council's website, www.waveney.gov.uk/payments and follow the instructions.

This service is available for Council Tax, Business Rates, Housing Rent, Housing Benefit Overpayment, Sundry

Debtor Invoices, Residents Parking Fines and Car Parks Excess Charges.

Both services are available 24 hours a day, seven days a week, except a short period between 11.30pm and 00.15am each day. If you have any queries please call our payment helpline on 01502 523502. If you are required to leave a message you will get a response within one working day.

An additional charge of 1.5% is payable on all credit card payments for Council Tax and Business Rates payments. There is no surcharge if you use a debit card.



Welcome!

A warm and sunny welcome to the Summer edition of In Touch magazine!



In Touch is produced three times a year and distributed to every household in Waveney. In it we hope to provide plenty of information

about council services as well as news of success stories in the district.

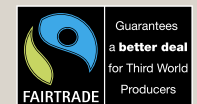
We are all utterly committed to improving outcomes for the people of Waveney and although this magazine hopefully indicates the strength and diversity of the services we provide, we are always seeking to improve.

Please let us know what you think of this publication as well as the services we provide. You can write to me at the Council, using the address provided on the back of this magazine.

Cllr Mark Bee
Leader, Waveney District Council.

intouch

Editorial Team: Phil Harris and Julie Fitzgerald.
Designed by TMS Media.
Printed by Ancient House Press on recycled paper.





Boosting Beccles

WDC's Executive Committee has approved the commencement of a project to look at developing a new sports complex in Beccles.

WDC, in partnership with Beccles Town Council looked to identify potential sites for a sports complex and associated facilities. Following feasibility studies, it was agreed that a site off George Westwood Way was the most appropriate and Beccles Town Council formally allocated a piece of land for potential leisure development.

WDC's Executive was asked to consider dedicating a neighboring piece of land and the resources to manage the project to completion. In June, the Executive Committee agreed the commencement of the project, approved the dedication of WDC land and agreed to officers applying for permissions to establish the project's feasibility on the site.

• BECCLES •

Councillor Stephen Ardley, Portfolio Holder for Operations and Facilities said: "This is the first stage in the process of creating a year round, sustainable, market leading leisure facility for Beccles. This project will offer fantastic opportunities to develop the area as a hub of recreation in the Town."

Councillor Jack Walmsley of WDC and Beccles Town Council is delighted: "Councillors have spent considerable time identifying a plot of land that could provide the facilities that residents and visitors to Beccles need. It will be a real landmark for Beccles."

Councillor Chris Punt, of WDC expressed his excitement: "The proposed development could include a swimming pool, gym and up to eight multi-use 5-a-side pitches, supported by a pavilion with changing rooms and a cafeteria. This really would be something special."

Leisure needs



In June, Waveney District Council asked residents for

their views on the future of leisure services in the district and is currently assessing the responses.

The aim of this 'Needs Assessment' was to generate valuable feedback from both users and non-users of leisure facilities in Waveney, such as swimming pools, beach services, outdoor sports and parks, sports grounds, sports halls, public halls, theatres, yacht stations, gyms and fitness rooms/studios.

• WAVENEY •

The council ran focus groups with residents, met with partners, clubs and organisations and published a questionnaire with the aim of attracting as broad a response as possible from residents of all ages, abilities and interests.

Councillor Mark Bee, Leader of Waveney District Council, and Lead Portfolio Holder for Community Cohesion, Partnerships and Well Being said: "We want to ensure that sustainable services are provided for the people of Waveney in the most effective and efficient way, offering genuine value for money and continual improvement.

"This needs assessment will tell us just what residents want from their leisure services and it will provide an invaluable platform to help us achieve this. Effective consultation with the people that matter is absolutely vital and this information will help us find the best way forward."



Orbis excitement



Plans for the OrbisEnergy complex took a major step forward when the Rt. Hon. Alistair Darling MP, Secretary of State for Trade and Industry, visited the site of the landmark development in Lowestoft to officially mark the start of works.

The building is a key component of the physical regeneration and economic development of Lowestoft and is designed to be a showcase for sustainable development. OrbisEnergy will provide high quality, flexible office accommodation for up to 30 companies and is part of a wide range of initiatives that support the offshore renewable energy industry in the East of England;

the only region to hold a third of the UK's offshore wind capabilities.

Mr Darling visited Ness Point in Lowestoft, Britain's most easterly point, on Monday 4th June and met Bob Blizzard, MP for Waveney, (pictured with Alistair Darling, right) and the OrbisEnergy partners, East of England Development Agency (EEDA), Suffolk County Council, Waveney District Council, Government Office East and Renewables East to hear about the important role the region can play in this sector in future years.

• LOWESTOFT •

Mark Bee, Leader of Waveney District Council said: "The regeneration of Lowestoft is moving apace and the brand new OrbisEnergy centre will ensure that this momentum is maintained. We are ideally situated in Lowestoft and the sub-region to benefit from the opportunities which will arise from the billion pound plus offshore renewable wind energy industry. It is also an outstanding example of sustainable design and will set a wonderful precedent for future large

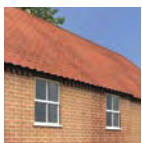


Image courtesy of Simon Lee, Suffolk County Council

developments both in the town and the district."

Councillor Wendy Mawer, Waveney's Portfolio holder for Economic Regeneration said: "The project has relied heavily on a very strong partnership between Waveney District Council, Suffolk County Council, EEDA, Government Office of the East, and importantly Renewables East. The achievement of this project will have immense benefits to companies within the Lowestoft and Great Yarmouth sub-region and the region as a whole.

Happening Halesworth



Work has begun on a project to transform the former hempworks in Halesworth from a derelict building into a thriving business centre.

Halesworth is fast becoming the place for businesses in North Suffolk to locate, with a range of good quality premises and associated support available.

The historic building, which had fallen into disuse and disrepair over the last 40 years, will be converted into eight small

business units, tailored to meet the needs of new and growing micro businesses.

Foundation East, a non-profit making organisation operating in Suffolk, Norfolk, Cambridgeshire and Essex, are managing the project and Waveney District Council have provided funding alongside the East of England Development Agency; the Adventure Capital Fund; and Suffolk County Council. There have also been contributions via the European Transitional Objective 2 fund and from local partners such as Halesworth Town

Council and the Halesworth and Blyth Valley Partnership.

• HALESWORTH •

Cllr Wendy Mawer, Portfolio Holder for Economic Regeneration said: "This is an outstanding example of partnership working for community benefit and the additional support provided by the local community and Waveney District Council has been vital in taking this project forward."



The Hempworks today.



Artist's impression of the finished building.

Play in Waveney



Waveney District Council has been gathering opinions on play facilities in the district from young and old alike and is currently sifting through some brilliant ideas.

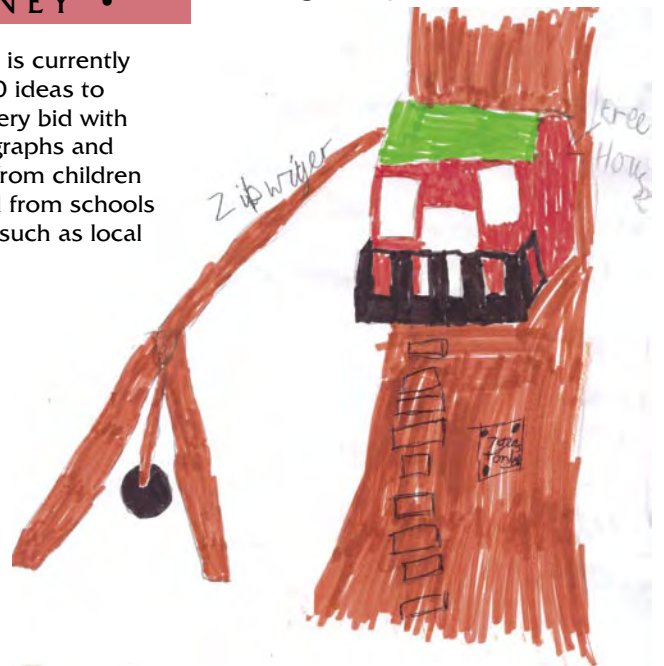
In partnership with local sporting and educational organisations WDC wanted ideas to help improve play facilities in the district and under the banner of the "Play Partnership," it invited residents to suggest possible projects that could be submitted as part of a bid to the 'Big Lottery' this summer.

The 'Play Ideas' questionnaire was made widely available, circulated to key groups and organisations and

promoted in the local media and the Council received no fewer than 152 completed questionnaires.

• WAVENEY •

The Play Partnership is currently deciding on the top 20 ideas to be included in the lottery bid with some fantastic photographs and drawings to consider from children and young people and from schools or community groups such as local



Brownies. Mothers and grandmothers who care for toddlers also formed a large percentage of respondents.

Cllr Wendy Mawer, Portfolio Holder for Economic Regeneration said: "This consultation has provided an excellent opportunity to engage with the local community on a very important issue. The Play Partnership now has the opportunity to enhance the provision of play across the district.

"I would like to thank everybody who took the time to fill out the questionnaire or supply an idea and we look forward to deciding which exciting projects are to be included in the 'Big Lottery' bid."

Fen Park Friends

An enthusiastic group of volunteers working in South Lowestoft, known as the Fen Park Friends, are rallying together to offer their time and support to an area in need of some care, attention and regeneration.

The Friends have successfully transformed this vast park by working in partnership with Waveney District Council and others such as Suffolk County Council, The Environment Agency, SAVO (Suffolk Association for Voluntary Organisations) and Kirkley Middle School.

• LOWESTOFT •

Funding from The Big Lottery (Transforming Your Space programme) has allowed a phased project to begin in an area which was subject to vandalism but is now a pleasant community park, well used by local families and residents.

The Fen Park Friends committee, WDC's Community Development and Parks Teams and Kirkley Middle School have worked together to produce something that people can see develop and appreciate for years to come.

Richard Jolley, Chair of Fen Park Friends, said: "We are very grateful to everyone involved so far, for giving their time and expertise. The regeneration of the park would not have been possible without the dedication of the committee members of Fen Park Friends and the partnership work that has taken place."

With more and more community-based projects being supported by Waveney District Council and funding streams becoming available, it is not a complete surprise to learn that this project is not alone. A similar scheme in Gunton has also been recognised for its dedicated residents and partnership work.

For further information or to become involved with this, or other similar projects in your area, please contact the Community Development Team at Waveney District Council on **01502 523 186 or 523 354**.

Noise solution

Don't suffer in silence this summer. If you have a problem with noise, there is something you can do about it - any time of day. Waveney District Council will operate an out of hours hotline through the summer months until September. So, if your peace is shattered, you can call for assistance before you reach breaking point.

The problem is especially severe in the summer when the heat, understandably, forces people to open their windows, making them more susceptible to noises in the neighbourhood. The Environmental Protection team at WDC expects to deal with around 700 complaints of noise nuisance each year.

• WAVENEY •

Waveney's evening hotline will enable residents to report incidents of noise nuisance out of hours. It is available at weekends from May to September and is accessible from 7pm to 1am on Fridays and Saturdays, and from 7pm to midnight on Sundays and Bank Holidays by calling **01502 515 435**. Any details

will be taken and passed on to the Duty Officer on call. Noise complaints can also be reported during the normal working day by phoning **01502 523117**.

Cllr Ken Sale, Portfolio Holder for the Built Environment said: "Noise causes stress, loss of sleep, high blood pressure and in extreme cases, outbursts of serious violence. It can be difficult to deal with because it leaves no measurable residue, so we can't visit the following day to assess it. Government guidance requires us to provide an appropriate response outside normal office hours and this summertime weekend evening hotline will hopefully help. Waveney takes noise pollution very seriously and we will be there to assist affected residents."

Foiling the fly-tippers

Waveney's Environment Support Officers (ESOs) work hard to clean up the District, dealing with fly-tipping, litter, graffiti and fly-posting. ESOs also undertake criminal investigations into incidents and have recently secured two prosecutions for the illegal disposal of waste.

The Department for the Environment, Food and Rural Affairs monitors each Council's performance, comparing the number of enforcement actions taken, with the change in the number of incidents recorded year on year. In its last report, DEFRA judged Waveney's performance to be "very effective."

Fly-tipping is the illegal disposal of waste and costs taxpayers in the District around £1,000 every week. It is WDC's responsibility to remove litter and fly-tipping from public land such as roads, pavements, adopted passageways, council-owned car parks, parks and recreation areas, laybys etc. If YOU see any fly-tipping, please report it by calling **01502 562 111** or use the web reporting form on the website: www.waveney.gov.uk

manage to achieve this balance very well; however, there is a minority of dog owners who may need a little more than encouragement."

The Order is due to come in to force at the end of July 2007 and may be inspected free of charge on the Council's website at www.waveney.gov.uk and at the Town Hall, Lowestoft and local offices.

Do-Do the right thing

Waveney District Council has listened to the concerns of dog owners who were worried that a new 'Dog Control Order' would have a big impact on where they could exercise their dogs.



In fact, the Order for the Waveney District will leave many areas of public land (including public parks and most of the beaches in

the District) where dog owners will still be able to exercise their dogs freely, off the lead. For example, the total length of beach affected by the proposed order is around 1.6 miles compared to the total coastline of Waveney of approximately 27 miles.

Cllr Ken Sale, Portfolio Holder for the Built Environment said: "We undertook a full consultation as we felt it was vitally important to strike the right balance. Being a responsible dog owner means more than making sure your dog is well fed and looked after. It also means having respect for the rights and freedoms of the non-dog-owning public. The vast majority of dog owners

Trees for Africa



Waveney District Council's Recycling Team has handed out

240 trees to schools, community spaces and local projects in the district... and Africa!

The Council signed up to a joint recycling project with the Aluminium Packaging Recycling Organisation (APRO), who had pledged to plant a tree for every tonne of aluminium packaging recycled between April 2005 and September 2006.

Residents of Waveney recycled 267 tonnes of aluminium through the blue bins and can banks, and so the Council was allocated 267 trees of which 10% were donated to similar projects in Burkina Faso, Africa. The remaining 240 Oak, Rowan, Silver Birch, Field Maple and Bird Cherry saplings were distributed locally.

Councillor Ken Sale, Portfolio Holder for the Built Environment (pictured below left, with Barry Shimmield, chairman, GWCP), performed a ceremonial planting at the Gunton Woodland Community Project. He commented: "It is amazing to think that this tree is a direct result of Waveney residents' recycling efforts. It has been a great initiative and I would like to wish all the projects the best of luck planting the other 239."



Food not wasted



WDC has launched an innovative recycling trial which aims to reinforce Waveney's position as one of the nation's leading recycling authorities.

Residents in 5000 homes in Halesworth and the Roman Hill area of Lowestoft have been invited to trial a service for the collection and processing of food waste and glass.

• WAVENEY •

A large jute bag (displayed right, by Kitran Eastman, waste management officer) will be used to collect all empty glass bottles and jars from the home. Jute is a carbon neutral, environmentally friendly material. A caddy for the kitchen worktop, special corn starch bags to line it and an outside food bin, were provided for the collection of food waste. Collection of both food waste and glass will be weekly.

The trial began in May and over three tonnes of food was collected in the first two days, with residents in Queens Road, Oxford Road and Beresford Road having the best 'put-out' rate.

Councillor Ken Sale, Waveney's Portfolio Holder for the Built Environment said: "The people of Waveney have worked hard to help us



become the 7th best recycling authority in the country and the residents of Roman Hill and Halesworth have been selected to trial a scheme that could go some way to helping us achieve our ambition of being number one.

WDC is eager to receive views on both the positive and the negative aspects of this trial, as well as ways that the service could be improved. Please send any comments to recycling@waveney.gov.uk. For more information about recycling call **01502 523 117**.

Recycling facts

Waveney is now the 7th best recycling authority in the country thanks to resident's efforts. The people of Waveney recycled almost 25,000 tonnes of household waste last year. This is more than the weight of the aircraft carrier HMS Ark Royal or a herd of 4,500 elephants!

In Waveney the main way to recycle is through the BLUE and the GREEN bins which are available for every household. These are collected on alternate weeks to the Black landfill bin. The Blue bin is for all paper, cardboard, plastic and metals such as tin cans and aerosols. The contents of this bin are sent for sorting in Norwich and then on for reprocessing. The green bins are for biodegradable garden waste such as prunings, leaves, grass and weeds and are taken for composting in south Suffolk.

If you wish to find out more information about what you can recycle and compost in your area, or to order leaflets and information call **01502 523 117** or email recycling@waveney.gov.uk. For more information about your day of collection or a missed bin, call **01502 523 460**. Collection calendars and leaflets can be found at www.waveney.gov.uk

THE WAVENEY



Partnership working



It has been a busy four and a half years in Lowestoft, resulting in many visible improvements and changes and some not so visible.

Whilst the majority of publicity for the works was issued under the Sunrise Scheme banner, they have been carried out through a multi-agency working agreement.

Waveney District Council was appointed the lead body, with overall responsibility for delivery of the project. Environmental and sustainable transport works were delivered in agreement with Suffolk County Council. The Town Manager initiative (to develop a town-wide events promotions programme) and Kirkley Business Support initiatives were delivered in agreement with the Chamber of Commerce.

Regular meetings were held to co-ordinate work schedules between Waveney District Council (regeneration); Suffolk County Council (highways works); the Highways Agency (relief road and bascule bridge) and Anglian Water Authority (sewers and flood alleviation).

There were significant benefits to partnership working and the commencement of a number of projects at the same time. The agencies involved saved both time and money by sharing workspace and traffic management provisions as well as the cost of final surfacing materials. This has enabled further regeneration work to be carried out within available budgets.

Royal approval



HRH The Princess Royal gave a royal seal of approval to the Waveney Sunrise Scheme when she visited Lowestoft to officially mark completion of the work.

The town centre and seafront has undergone a huge transformation during the four and a half year project. The £14.7m facelift has improved access on foot and by road and the whole area has been aesthetically enhanced.

On 5th April, The Princess Royal performed her official duties before the large crowds that gathered at the new fountains in front of the East Point Pavilion. She marked the occasion by unveiling a plaque and naming the Royal Plain Fountains. She was then treated to a musical fountain display, which wowed the assembled onlookers.

As well as surveying the work completed at Royal Plain, the Princess Royal was taken into the Royal Norfolk and Suffolk Yacht Club to view an exhibition of past and present photographs of the Sunrise area. It was here that she met members of the project strategy group and VIP guests from the

companies involved. Before she left she signed the visitors' book in the foyer and received a gift of a presentational plaque.

Councillor Wendy Mawer, Portfolio Holder for Economic Regeneration said: "The Royal visit marked the completion of the visible work for the Sunrise Scheme, but there is still a lot of hard work going on behind the scenes. Most of the changes are in place, but we will still need to review evidence of continued regeneration in the area. We are already seeing an increased sense of pride among residents and businesses and an increased interest from private developers.

"We are still doing our assessments, but already there seems to be a real change afoot. I hope that people are pleased with what has been achieved. Take a walk around and experience it for yourself."



WAVENEY SUNRISE SCHEME



Traffic flow



In 2002 a traffic survey predicted that Lowestoft could be at a

virtual standstill by 2016 without improvements to the road network.

Worryingly, traffic surveys in 2006 indicated a rapid growth in traffic, approaching levels previously predicted for the year 2012. This reinforced the need for improvements to the road network.

Thanks to the new network, things are looking much better for the future. The final section of the gyratory loop in Waveney Road became operational in June. Installation of an Urban Traffic Management Control System (UTMC) is nearing completion. Once operational, it will adjust traffic and pedestrian signals to provide the most efficient traffic flow to all linked junctions on the primary routes around Lowestoft. Its impact should become apparent within the six-month commissioning period. Once work is complete and the UTMC is making its mark, the roads should cater for predicted flows up to 2021.



Aims and achievements:



The challenge for the Waveney Sunrise Scheme was to bring a new dawn to the Lowestoft area.

The main focus was improving Lowestoft's environment and image and thus encouraging business development and tourism. The project was given specific tasks to complete and set measurable targets. If its success is to be judged on these results, it has exceeded all expectations. Below are details of just some of the results of the project:

Aim: Enhancement of the Town Centre environment by improving pedestrian access and extension and renewal of existing pedestrianised areas.

Results:

- The enhancement of 72,879m² of public space
- Pavement surface treatment to prevent pavement staining and ease removal of chewing gum
- Enhanced cycle routes and provision of cycle stands
- Over 150 trees have been planted

Aim: Develop safe and accessible environments for all (including those with mobility problems and families with young children).

Results:

- New street lighting and additional CCTV to help with crime and disorder
- The introduction of 30 designated disabled parking spaces, where previously there were just eight
- Level thresholds to shops in most cases.
- De-cluttered the precinct

Aim: Create outdoor areas for seating / pavement cafes to increase life and vitality in the street. Improve facilities for market traders.

Results:

- Provision of new permanent market stalls in the Britten Centre
- Large areas of public space created for street activity

Aim: The renovation of run down historic and other buildings in the central seafront and Kirkley areas of Lowestoft to return them to full economic use through a number of contributory Premises Improvements grant schemes.

Results:

- The creation of 2,970m² new and refurbished commercial floor space
- Eight buildings brought back into use to date, with other projects close to completion
- 75 dwellings completed or improved

Aim: Encouraging inward investment by new business and create investment in improving / expanding existing premises to create and protect jobs.

Results:

- 52 new business start-ups
- 23 new businesses attracted to the region
- 492 new jobs created

Aim: Linking business and tourism promotions to encourage increased visitor numbers. Developing a partnership with local business associations to generate a co-ordinated programme of events and promotional initiatives.

Results:

- 482,298 additional visitors to the area
- 40 visitor events
- 15 partnership events

Planning for the future

The Local Development Framework aims to provide a working blueprint for land development in the District to 2021 and a number of related consultations have generated a wide range of views from Waveney residents.

Comments have been received on the 'Core Strategy' which will set out the Council's overall approach towards future development, where it should take place and the key factors that need to be taken into account when considering proposed developments.

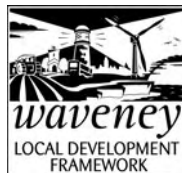
• WAVENEY •

These opinions are being analysed prior to the document being prepared for submission to the Government in November 2007 at which point we will ask for any further comments you may have. These will then be considered by a Government appointed Independent Inspector.

Meanwhile, during consultation on 'Land Suggested For Future Development', a number of alternative sites were proposed and a further consultation is set for this summer, where views will be sought on these additional sites. Views from BOTH

consultations will then be assessed to identify the preferred sites to meet the needs of the District. The 'Preferred Options' will then be published for a further consultation in January 2008.

Elsewhere, the Lake Lothing Area Action Plan will be submitted to the Government in January 2008. The Plan will focus on the regeneration and improvement of the Lake Lothing and Harbour Area in Lowestoft and at the time of submission there will be a further opportunity to offer views. Visit www.1steast.co.uk for more information on this and www.waveney.gov.uk/Planning/Planning+Policy for more information on the Local Development Framework as a whole.



Online access

Waveney District Council has introduced a brand new online planning service providing access to real-time planning information at the click of a mouse.

The public will now be able to monitor the progress of planning applications and appeals and submit comments about existing applications simply by accessing the service on the Council's website. 'Public Access for Planning,' which went live in March, can be accessed by visiting www.waveney.gov.uk and clicking on 'Visit the Public Access Planning Application Information System' on the homepage.

The Public Access system is part of a larger project to improve customer access to information and services, enhance public involvement in the Council's processes and to improve accountability.

The system enables members of the public to directly interact with, and query, live planning application information enabling planning officers to receive and review residents' comments. Visitors to the site can see details of the applicant, the type of application, closing dates for applications and date of receipt; the status of the application, and finally the decision. Users can also check for information on planning applications, appeals and enforcements within 300 metres of any property.

Councillor Ken Sale, Waveney's Portfolio Holder for the Built Environment said:

"Planning needs the public to be involved and this system will make the whole process far more convenient. It will save people a journey in to the Council offices and ensure that information can be accessed in a timely and efficient manner. It will prove invaluable to both residents and planning officers and I am delighted to see it up and running on the Council's website."

Protecting our history

Waveney District Council is fully committed to the proper protection of its many historic towns and villages, and has successfully completed the 'conservation area' appraisals of a number of key locations. Halesworth, Bungay, North Lowestoft, Holton, Wissett and Homersfield have been appraised and these documents can be found on the Waveney District Council website at: http://www.waveney.gov.uk/Planning/Conservation/conservation_appraisals.htm

Appraisals for South Lowestoft, Southwold and Southwold Harbour are set for completion before April 2008. Look out for public consultations on the home page at: www.waveney.gov.uk and public meetings, where the Council

will seek your views on our proposals. You can also contact the Waveney District Council design and conservation team on **01502 523 077** or email bbc@waveney.gov.uk.





Blue Flag still flying

Three beaches in the district have been awarded the prestigious Blue Flag for the 2007 season.

Beaches in Lowestoft - North of Claremont Pier, Lowestoft South of Claremont Pier and Southwold Pier have been rewarded. This is the fifth successive year that Waveney's beaches have received this prestigious award.

The Blue Flag Campaign is an initiative of FEE (Foundation for Environmental Education) to recognise clean, well-managed beaches that promote coastal environmental care. ENCAMS European Blue Flag Awards recognise beaches throughout Europe that fulfil strict criteria relating to both the water quality and the surrounding beach area.

A beach must have attained the guideline standard of the Bathing Water Directive before being assessed for various other criteria. It must also demonstrate that it provides and manages a range of facilities and contributes to public awareness of environmental issues.

Waveney Economic Partnership

The Waveney Economic Partnership is taking its meetings around the District to highlight its significance in delivering economic prosperity to the area.

The partnership monitors the economic progress of the District by measuring a number of performance indicators such as occupation of managed workspaces, unemployment rate and growth of key employment sectors such as the energy industry.

The partnership - hosted and facilitated by Waveney District Council's Regeneration Team - is also reviewing both its membership and vision to ensure it remains a key driver in delivering the Waveney Prospectus, a framework for the regeneration of the District over the next 5-10 years. Targets include capitalising on the proximity of Waveney to mainland Europe to establish Lowestoft as a European centre of expertise in energy.

Councillor Wendy Mawer, Portfolio holder for Economic Regeneration, was delighted that the care taken in maintaining the high standard of the district's beaches has been acknowledged: "This recognition demonstrates how hard the teams at Waveney work to enhance the water quality, cleanliness and facilities at our beaches and endeavour to improve the experience for residents and visitors alike."

Waveney District Council's Asa Morrison, Principal Service Manager - Culture, Tourism & Sport said: "This is excellent news as our beaches are one of the primary reasons visitors come to the Sunrise Coast. To receive this accolade for the fifth year running is of great benefit to the local tourism industry."

For more information about the beaches near you go to www.visit-sunrisecoast.co.uk

Coastal update

Waveney District Council is celebrating the completion of the £7m Southwold Coastal Protection Scheme.

Following minor but important finishing works, an event to celebrate completion of this £7m project, is planned for this month. Works have included the construction of pedestrian access steps up and over each timber and rock groyne, construction of the new wheelchair ramp to the beach south of the pier, refurbished access steps from promenade to beach, joint sealing to new structures and repairs to the road and footpath at the entrance to the works site south of the pier.

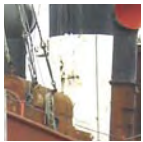
• WAVENEY •

Meanwhile the Coast Protection Team, in partnership with HR Wallingford, is project-managing proposed works to support the Flint Wall coast protection structure on the South Beach at Lowestoft. The beach over a short frontage here continues to be very low, which gives rise to concerns over the stability of the flint wall, which supports the prom behind. This is in contrast to the high level beach south of Claremont Pier which in itself is a concern to colleagues in Facilities Management due to too much wind-blown sand on the prom!

The team intend to deepen and widen the foundation of the flint wall structure this autumn, subject to gaining all the required consents. In preparation for this, some exploratory boreholes were drilled on the beach in May.

Cllr Wendy Mawer, Portfolio Holder for Economic Regeneration said: "Our Coastal Protection team is working hard to safeguard the future of our beautiful Waveney coastlines. This is important, valuable work and will make a real difference to the people of the region now and for generations to come."

Granting success



The repair and renovation of the world's last remaining steam herring drifter is one of the many projects and organisations to benefit from over £80,000 in grants provided by Waveney District Council this year.

23 Voluntary and Community sector organisations will receive direct funding whilst other organisations enjoy Non Discretionary Rate Relief and Peppercorn Rent Relief amounting to over £90,000.



Those supported are made up of organisations from arts and leisure, advice services, health groups and volunteering support and advice. One example of a successful application for funding is the Lydia Eva Charitable Trust. The Lydia Eva (pictured below) is the world's last remaining steam herring drifter and the Trust aims to repair and renovate the vessel and use it as a floating museum dedicated to East Anglia's once-rich herring industry.

Councillor Mark Bee, Leader of the Council and Portfolio Holder for Community Cohesion, Partnerships and Well Being said, "Waveney District Council recognises that voluntary organisations play an important role in providing services to the community. The aim of the District Council Grant Service is to give financial support to those groups that find it difficult to

• WAVENEY •

access external funding."

Officers at WDC are also able to help in other ways. To illustrate, Kathleen Scott, Grants Co-ordinator and Jo McCallum, Community Development Officer, are working closely with the Lowestoft 'Signing' Choir (pictured above) to help them become more independent. They are also assisting them in identifying external sources of funding which will help them in their plans to expand their membership.

For those interested in learning more about WDC's grants programme, there is an application form for funding up to and including £500 and an application form for funding over £500. The closing date for applications for 2008/09 is October 2007 and should you require support or assistance in applying for a grant, please do not hesitate to contact Kathleen Scott on **01502 523180** or Email: Kathleen.Scott@waveney.gov.uk. The Grants information and application forms are available to download from Waveney District Council's website www.waveney.gov.uk.

Youth funding

Local young people have made a big impact on their clubs and projects by successfully bidding for money from the Youth Opportunity and Youth Capital Funds. They have been awarded funds to improve activities and facilities in their area and are experiencing first hand the exciting results of all their hard work.

Money from the Youth Opportunity and Youth Capital Fund is available to people between the ages of 13 and 19. It can be used to change existing facilities and buy new equipment, or to pay for new projects and activities.

For example, Kessingland Village Hangout has been awarded money to replace doors and windows, buy new equipment for its healthy eating project and to take members on a camping trip to Thorpe Woodlands.

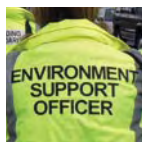
Colville House Skate Project is another local initiative that has been awarded money to make improvements to its existing facilities. The current indoor skate ramp will be re-surfaced and new outdoor ramps and grinding poles will be bought.

Young people who want to find out more about the Kessingland Village Hangout or the Colville House Skate Project should contact Karen Booth on **01502 538060**.

There is more money available this year. Those interested in applying for the 2007-08 rounds of the Youth Opportunity Fund and Youth Capital Fund scheme should contact Vicki Perry, Administrator, on **01473 260 167** or [email](mailto:perry@connexionsuffolk.org.uk).

perry@connexionsuffolk.org.uk

Impact Day



The latest in a series of 'Impact Days' in Waveney,

designed to help improve the lives and environment of residents, took place in May with representatives from Waveney District Council, the police, fire service, Trading Standards and the DVLA carrying out a high-profile sweep of the Roman Hill area of Lowestoft.

About 50 officials took part in the operations which saw counterfeit goods seized, graffiti earmarked for cleaning, fly-tipped waste removed, truants returned to school or their parents and

suspected abandoned cars removed. However, the day was not just about targeting bad behaviour. Members of the Suffolk fire and rescue service were also on hand to offer safety advice to residents and arrange for smoke alarms to be fitted.

Councillor Ken Sale, Waveney's Portfolio Holder for the Built Environment said: "Operation Jacobite was the latest in a series of impact days in Waveney. Impact days are positive, public-facing events that demonstrate multi-agency working at its best.



"I would like to thank all the agencies that participated. The day went very well and we had some excellent results. More regular, smaller initiatives are on the cards and we will also be targeting Waveney's other market towns."

The Council's participation in this multi-agency initiative was co-ordinated by David Clubley, WDC's Substance Misuse and Safety Officer, who said: "It was positive to see how responsive members of the public were in pointing out problem areas. Looking at things from the perspective of a Substance Misuse Officer, I was pleased that we did not see too much evidence of drug misuse, just issues around health and safety. I felt that the whole area was very clean." If anyone thinks otherwise, then they can contact David via the website: www.waveney.gov.uk/harmreductiongroup.

Keeping Suffolk safe

Policing in the Waveney area has undergone a radical change recently, with the introduction of seven Safer Neighbourhood Teams. The teams are a new way of policing the local area, with police officers, police community support officers and other police staff working alongside councils, community partners and volunteers.

The teams aim to have a positive impact on crime, anti-social behaviour and safety. They will be listening to people's concerns, working together to solve problems and keeping the community informed about progress.

For example, problems such as graffiti have always been dealt with by a number of different people, all working independently of each other. But the

Safer Neighbourhood Teams work with the Council to remove it, police officers prevent it through targeted patrols and youth workers, Waveney's Community Development Team and Community Safety Officer talk with young people to find out what caused it - all at the same time. Superintendent Chris Mayhew from Suffolk Police said: "We know that Suffolk is one of the safest places to

live and work in. However, people tell us they are still concerned about things such as graffiti, noisy neighbours and speeding cars, which means that they don't always feel safe. Wherever you are, Safer Neighbourhood Teams will have an impact on what you do at home and at work. It's a very exciting way of making a real difference to the people of Suffolk."

• WAVENEY •

You can find out more about your local team at the Safer Neighbourhoods website at: www.saferuffolk.org.uk where you can locate detailed information relevant to your own ward. All the teams can be contacted by phone as well. Just call **01986 835300** and ask to be put through to your team. Waveney Officers and Councillors are involved in the SNT task and coordinate groups that help SNTs to solve many of the issues in Waveney.

Your choice

Waveney District Council is about to launch a scheme that will revolutionise the way tenants are allocated a home in the District.

In partnership with local Housing Associations and Great Yarmouth Borough Council (who already run their own very successful scheme), plans are being introduced for a 'Choice Based Letting' scheme called Homeselect.

Choice Based Letting schemes empower people, giving them a greater say over where they live. Instead of points or complex assessments, all applicants are divided into one of three priority bands, based on their needs. Rather than allocating properties from a list, or making nominations to housing associations, vacant properties in the scheme are advertised fortnightly in the local press, at local offices and on the website and telephone hotline.

• WAVENEY •

Advertisements will provide clear details of each property, who is eligible and how to apply. Applicants will then have seven days to express an interest. Each fortnight, information about previously advertised properties will be provided, showing how many people applied and which band the successful applicants were in. This is an open and transparent process, enabling applicants to build up a

picture of how long they are likely to wait for a home in any given area.

Homeselect will go before full Council in September, where it is expected to receive its formal approval. If so, it will be launched to the public towards the end of the year.

Cllr Bruce Provan, Portfolio Holder for Housing said: "This is an exciting new approach to finding a home. Evidence shows that giving people a choice and a stake in where they live will lead to more satisfied tenants. It will make the system easier to understand and will ensure that applicants in most need are given priority."

The scheme requires people to be much more actively involved and the Council recognises that some people may need additional assistance, which will be provided. Promotional events will also be held across the District at which officers will be available to answer questions. Details of forthcoming events will be fully publicised on the website www.waveney.gov.uk and in the local media.



Management Team Takes Shape

Following a robust recruitment drive, Waveney District Council's new Senior Management Team is now taking shape.

Beverly Herring has joined WDC from South Norfolk Council to become the new Portfolio Manager with responsibility for Customer Services, Communications and ICT and Arthur Charvonia is now the Portfolio Manager for Legal and Democracy. Meanwhile, the new Portfolio Manager for Economic Regeneration is Malcolm Perrins. Further changes have seen Leah Douglas appointed to the Community Cohesion, Partnerships & Wellbeing Portfolio and Andrew Verney is to take up a full time role leading on the Waveney Campus project.

Chief Executive, Glen Garrod is delighted with the appointments and excited by the opportunity to work closely with a new and refreshed 'SMT'.

He said: "All candidates have been

Making life easier

Waveney District Council wants to make it as easy as possible for you to pay your Council Tax.

Council Tax is payable in ten monthly instalments commencing 1st April through to the 1st January the following year and the largest percentage of customers pay by direct debit. This is the Council's preferred payment method and takes the hassle out of payment.

Residents that opt for this method of payment have a choice of four payment dates in each month and if they choose to pay on the 1st of each month can pay over 12 months instead of 10. Later this year, residents will also be able to set up a Direct Debit instruction over the telephone thus avoiding the need to fill out a form. Call **01502 523535**, go to www.waveney.gov.uk or email revenues@waveney.gov.uk

If you are experiencing difficulties in paying your Council Tax please telephone **01502 523 278** for advice. If you are on a low income you may be eligible for Council Tax Benefit. For further advice on this please telephone **01502 523535** or email benefits@waveney.gov.uk or visit the website www.waveney.gov.uk

You may be eligible for Pension Credit, if you are a pensioner and on a low income. Please contact the Pension Credit application line **0800 99 1234** or text phone **0800 169 0133** or visit their website www.thepensionservice.gov.uk

through a robust and challenging assessment which has resulted in these outstanding appointments." Our senior management team boasts a lot of experience both here at WDC and beyond and I believe colleagues in the senior team will contribute greatly to improving outcomes for the people of Waveney."

Active sport



Beach huts



Colourful or candy-striped, the beach hut has become

an iconic symbol of the British seaside and there are up to 30 huts available for hire on Lowestoft's beaches.

Overlooking an award-winning beach, each hut comes equipped with two deckchairs, so you can sit back and watch the world go by. Kick back and relax, safe in the knowledge that the beach has a Blue Flag for its cleanliness, water quality & facilities and the coast is patrolled by Waveney's own Lifeguard service.

• LOWESTOFT •

At the time of going to print, as expected, the huts are fully booked for the week of the Seafront Air Festival. However, there are dates available during the school holidays or in the quieter weeks either side.

So, why not take the opportunity to find out more? Call the East Point Pavilion Tourist Information Centre on **01502 533 600**.



Waveney District Council is playing a key role in the Active Sports Partnership which is focusing on the current and future provision of sport and physical activity in the district.

The Partnership hopes to increase the numbers of people taking part in sport and physical/cultural activity and key players alongside Waveney District Council include Great Yarmouth & Waveney Primary Care Trust, Suffolk County Council and organisations from the sporting, voluntary and private sectors.

The Partnership aims to help organisations strengthen their operational practices, offer advice on accessing funding, share good practice with other voluntary and private sporting organisations and promote advertising and marketing.



promoting active lifestyles



This type of Sports Network is being backed by Sport England throughout the whole country, and sporting clubs and teams are encouraged to get involved.

For further information, please contact Claire Gallagher - Service Manager (Sports & Leisure Development)

on **01502 523010** or email

claire.gallagher@waveney.gov.uk

Summer swimming

Waveney's outdoor swimming pools are open for business this summer.

Beccles Pool, at Puddingmoor boasts a 33-metre main pool, as well as a toddler pool and baby pool. There is a large grassed area for sunbathing, and, new to the facility this year, a giant inflatable aquarun!

The pool is also hoping to add parent and toddler sessions to the weekly

programme and offer junior swimming lessons during the summer holidays. If you are interested please ask the staff at the pool and they will be able to assist you.

Halesworth outdoor swimming pool is off Dairy Hill with a 25-metre swimming facility as well as a large grassed sunbathing area and spectator seating. Both facilities have refreshments for sale if you work up an appetite after swimming or crave a cool ice cream.

The pools are open seven days a week from late May to early September but please visit the website at www.waveney.gov.uk/Leisure/Sport+and+Leisure for further information on timetables and prices. Alternatively, you can telephone Beccles Pool on **01502 713 297** or Halesworth Pool on **01986 872 720**.

Summer highlights



As we step into another busy summer season the programme of events around the Sunrise Coast continues to grow.

This year sees a wide and diverse range of events being held throughout the district. The 2007 Sunrise Coast Events Guide is now available free of charge from Tourist Information Centres or by visiting www.visit-sunrisecoast.co.uk

Highlights include:

Fri 20 - Sun 22 Jul
Eastern Haze Festival 2007
Somerleyton Hall

Sat 21 - Mon 23 Jul
Beccles Carnival

Thu 26, Fri 27 Jul
Lowestoft Seafront Air Festival

Sat 28 - Sun 29 Jul 2007
Lings Honda 4-Stroke World Series Power Boats
Lowestoft Seafront

Most Thursdays to September
Power Boat Racing
Nicholas Everitt Park,
Oulton Broad

Sat 28 Jul
Jazz on the Green
South Green, Southwold

Sun 29 Jul 2007
Eastern Lights Motorcycle Cavalcade
Royal Green, Lowestoft

Fri 3 - Sun 5 Aug
Gig in the Park 2007
Halesworth Town Park

Sun 5 Aug
27th British Open Crabbing Championship
Walberswick

Thu 9 Aug
Children's Carnival Fun Day
Royal Green, Lowestoft

Show and tell

WDC has recently launched an Arts and Heritage service to help support and promote arts and heritage organisations, venues and participants alike.

WDC's Arts and Heritage service is rapidly trying to create a databank of information about all the allied individuals, initiatives and enterprises in the district - to reveal the full extent of what's going on, who's doing it and where more can be developed.

So please - reveal all! Let Arts and Heritage know about the venues and businesses you know, like, or even run - whether large or small. They want to hear from

people who are creatively enterprising - professionally, in community ventures and as true amateurs. And if that's you - reveal yourself! But please also think beyond the traditional, mainstream "arts" and "heritage" endeavours as well - from amateur archaeologists to designers and new media entrepreneurs. The arts and heritage arenas are vast and part of everyone's lives and lifestyles - often without people realising it.

All and any information gratefully received at arts&heritage@waveney.gov.uk or to Arts & Heritage Service, Town Hall, Lowestoft, NR32 1HS

Fri 10 Aug
Sugababes in concert
Somerleyton Hall

Sat 11 Aug
Picnic in the Park with Jools Holland
Somerleyton Hall

Mon 13 Aug
Lowestoft Carnival Parade

Sun 19 Aug
Lowestoft Pier to Pier Swim

Sun 26 Aug 2007
Antiques Market
Halesworth

Sun 26 - Mon 27 Aug
Oulton Broad Gala Day

Sun 26 Aug
Teddy Bears' Picnic
Somerleyton Hall

Mon 27 Aug
Jazz Picnic on the Lawns
Somerleyton Hall

Sun 2 Sep
Greenpeace Festival
Hulver Farm, Bungay

Thu 6 - Fri 7 Sep
Southwold Jazz Festival

Racing line



The world's largest offshore powerboat racing series is coming to Lowestoft.

After discussions with Waveney District Council and much hard work and dedication from the team at Lings, the **Honda Formula 4-Stroke (HF4S) circus pays its first ever visit to the town on Saturday 28th and Sunday 29th July.**

The HF4S fleet is set to entertain crowds of up to 250,000 with an official practice session planned for Friday 27th.

Lowestoft also has its very own team competing. Be there to support the Lings Team, as David Cowley and Paul Barkshire fight for a position the podium. If this is a success in its first year it may become an annual event, which is great news for Lowestoft, race fans and local businesses too! This follows two days of the Air Festival; providing four fun-packed days of family entertainment.



How to get in touch

Let us know what you think of this publication
Post: Town Hall, High Street, Lowestoft, Suffolk NR32 1HS.
Tel: **01502 562111** Fax: **01502 589327**
Email: info@waveney.gov.uk Website: www.waveney.gov.uk

