

THE TOWN AND COUNTRY PLANNING (GENERAL PERMITTED
DEVELOPMENT) (ENGLAND) ORDER 2015

Direction Made under Article 4(1)

WANGFORD CONSERVATION AREA
AMENDED AREA 2024

THE TOWN AND COUNTRY PLANNING (GENERAL PERMITTED DEVELOPMENT) (ENGLAND)
ORDER 2015 (AS AMENDED)

DIRECTION MADE UNDER ARTICLE 4(1)

WANGFORD CONSERVATION AREA

WHEREAS the Council of the District of East Suffolk being the appropriate Local Planning Authority within the meaning of Article 4(5) of the Town and Country Planning (General Permitted Development) (England) Order 2015 (as amended) ("the Order") are satisfied that it is expedient that development of the descriptions set out in the First Schedule should not be carried out within the area of land designated in the Second Schedule such land being outlined in blue on the plan annexed hereto unless permission is granted on an application made under Part III of the Town and Country Planning Act 1990 as amended.

NOW THEREFORE the Council in pursuance of the power conferred on it by Article 4(1) of the Order HEREBY DIRECTS that the permission granted by Article 3 of the Order shall not apply to the development specified in the First Schedule in respect of the land described in the Second Schedule.

For the purposes of this Direction the expression 'relevant location' (wherever it may appear) shall mean a highway, waterway or open space.

FIRST SCHEDULE

- (a) The enlargement, improvement or other alteration of a dwellinghouse, being the development comprised of Class A of Part I of Schedule 2 of the Order where any part of the enlargement, improvement or other alterations would front a relevant location.
- (b) The enlargement or alteration of a dwellinghouse consisting of an addition or alteration to its roof, being the development comprised of Class B and Class C of Part I of Schedule 2 of the Order where any such alteration would be to a roof slope which fronts a relevant location.
- (c) The erection or construction of a porch outside any external door of a dwellinghouse, being the development comprised within Class D of Part I of Schedule 2 of the Order where any such alteration would front a relevant location.
- (d) The provision within the curtilage of the dwellinghouse of any building or enclosure, swimming or other pool required for a purpose incidental to the enjoyment of the dwellinghouse as such, or the maintenance, improvement or other alteration of such a building or enclosure; or a container used for domestic heating purposes for the storage of oil or liquid petroleum gas, being the development comprised within Class E of Part I of Schedule 2 of the Order, where the building or enclosure, swimming or other pool to be provided would front a relevant location or where the part of the

building or enclosure maintained, improved or altered would front a relevant location.

- (e) The provision within the curtilage of a dwellinghouse of a hard surface for any purpose incidental to the enjoyment of the dwellinghouse as such; or the replacement in whole or in part of such a surface, being the development comprised within Class F of Part I of Schedule 2 of the Order where the hard surface would front a relevant location.
- (f) The installation, alteration or replacement of a chimney, flue or soil and vent pipe on a dwellinghouse, being the development comprised within Class G of Part I of Schedule 2 of the Order where any such alteration would be to a wall or roof slope which fronts a relevant location.
- (g) The erection, construction, maintenance, improvement or alteration of a gate, fence, wall or other means of enclosure, being the development comprised within Class A of Part 2 of Schedule 2 of the Order where the erection, construction, maintenance, improvement or alteration of a gate, fence, wall or other means of enclosure would be within the curtilage of a dwellinghouse and would front a relevant location.

SECOND SCHEDULE

Hadfield Cottage 1 Pound Corner London Road Wangford Beccles Suffolk NR34 8AZ
Wangford Veterinary Clinic Pound Corner London Road Wangford Beccles Suffolk NR34 8AX
St Peters And St Pauls Church Church Street Wangford Suffolk
Pound Corner London Road Wangford Beccles Suffolk NR34 8AX
Little Priory Church Street Wangford Beccles Suffolk NR34 8RW
2 Pound Corner London Road Wangford Beccles Suffolk NR34 8AZ
The Stables 13A High Street Wangford Beccles Suffolk NR34 8RL
The Old Bakehouse 5A Church Street Wangford Beccles Suffolk NR34 8RW
The Old Forge Grooming Salon Pound Corner London Road Wangford Beccles Suffolk NR34 8AX
Shop At 16 High Street Wangford Beccles Suffolk NR34 8RA
Flat At The Angel Inn High Street Wangford Beccles Suffolk NR34 8RL
Harlequin House 1 Church Street Wangford Beccles Suffolk NR34 8RW
5 Church Street Wangford Beccles Suffolk NR34 8RW
17 Church Street Wangford Beccles Suffolk NR34 8RW
19 Church Street Wangford Beccles Suffolk NR34 8RW
23 Church Street Wangford Beccles Suffolk NR34 8RW
25 Church Street Wangford Beccles Suffolk NR34 8RW
35 Church Street Wangford Beccles Suffolk NR34 8RW
37 Church Street Wangford Beccles Suffolk NR34 8RW
38 Church Street Wangford Beccles Suffolk NR34 8RN
40 Church Street Wangford Beccles Suffolk NR34 8RN
42 Church Street Wangford Beccles Suffolk NR34 8RN
44 Church Street Wangford Beccles Suffolk NR34 8RN
St Edmunds House 59A Church Street Wangford Beccles Suffolk NR34 8RN
61 Church Street Wangford Beccles Suffolk NR34 8RN
63 Church Street Wangford Beccles Suffolk NR34 8RN
69 Church Street Wangford Beccles Suffolk NR34 8RN

71 Church Street Wangford Beccles Suffolk NR34 8RN
1 High Street Wangford Beccles Suffolk NR34 8RL
3 High Street Wangford Beccles Suffolk NR34 8RL
4 High Street Wangford Beccles Suffolk NR34 8RR
5 High Street Wangford Beccles Suffolk NR34 8RL
Church Gate 6A High Street Wangford Beccles Suffolk NR34 8RR
6 High Street Wangford Beccles Suffolk NR34 8RR
7 High Street Wangford Beccles Suffolk NR34 8RL
8 High Street Wangford Beccles Suffolk NR34 8RR
9 - 11 High Street Wangford Beccles Suffolk NR34 8RL
12 High Street Wangford Beccles Suffolk NR34 8RA
13 High Street Wangford Beccles Suffolk NR34 8RL
Blyth House 14A High Street Wangford Beccles Suffolk NR34 8RA
Mulberry House 14 High Street Wangford Beccles Suffolk NR34 8RA
15 High Street Wangford Beccles Suffolk NR34 8RL
16 High Street Wangford Beccles Suffolk NR34 8RA
17 High Street Wangford Beccles Suffolk NR34 8RL
Lilliput Cottage 19 High Street Wangford Beccles Suffolk NR34 8RL
21 High Street Wangford Beccles Suffolk NR34 8RL
23 High Street Wangford Beccles Suffolk NR34 8RL
25 High Street Wangford Beccles Suffolk NR34 8RL
27 High Street Wangford Beccles Suffolk NR34 8RL
29 High Street Wangford Beccles Suffolk NR34 8RL
31 High Street Wangford Beccles Suffolk NR34 8RL
41 High Street Wangford Beccles Suffolk NR34 8RL
43 High Street Wangford Beccles Suffolk NR34 8RL
18 Norfolk Road Wangford Beccles Suffolk NR34 8RF
20 Norfolk Road Wangford Beccles Suffolk NR34 8RF
22 Norfolk Road Wangford Beccles Suffolk NR34 8RF
24 Norfolk Road Wangford Beccles Suffolk NR34 8RF
28 Norfolk Road Wangford Beccles Suffolk NR34 8RF
32 Norfolk Road Wangford Beccles Suffolk NR34 8RF
34 Norfolk Road Wangford Beccles Suffolk NR34 8RF
36 Norfolk Road Wangford Beccles Suffolk NR34 8RF
40 Norfolk Road Wangford Beccles Suffolk NR34 8RF
42 Norfolk Road Wangford Beccles Suffolk NR34 8RF
44 Norfolk Road Wangford Beccles Suffolk NR34 8RF
50 Norfolk Road Wangford Beccles Suffolk NR34 8RF
Renby Church Close Wangford Beccles Suffolk NR34 8RQ
3 Church Street Wangford Beccles Suffolk NR34 8RW
Rose Cottage 7 Church Street Wangford Beccles Suffolk NR34 8RW
9 Church Street Wangford Beccles Suffolk NR34 8RW
15 Church Street Wangford Beccles Suffolk NR34 8RW
21 Church Street Wangford Beccles Suffolk NR34 8RW
27 Church Street Wangford Beccles Suffolk NR34 8RW
29 Church Street Wangford Beccles Suffolk NR34 8RW
The Round House 33 Church Street Wangford Beccles Suffolk NR34 8RW
55 Church Street Wangford Beccles Suffolk NR34 8RN
57 Church Street Wangford Beccles Suffolk NR34 8RN
59 Church Street Wangford Beccles Suffolk NR34 8RN

Old Barn Cottage 5A High Street Wangford Beccles Suffolk NR34 8RL
Flat 2 10 High Street Wangford Beccles Suffolk NR34 8RA
Flat 3 10 High Street Wangford Beccles Suffolk NR34 8RA
Yew Tree House 12A High Street Wangford Beccles Suffolk NR34 8RA
33 High Street Wangford Beccles Suffolk NR34 8RL
35 High Street Wangford Beccles Suffolk NR34 8RL
6 Hill Road Wangford Beccles Suffolk NR34 8AR
Barnside Hill Road Wangford Beccles Suffolk NR34 8AR
Birds Nest Hill Road Wangford Beccles Suffolk NR34 8AR
Essenden Hill Road Wangford Beccles Suffolk NR34 8AR
Willow Creek Hill Road Wangford Beccles Suffolk NR34 8AR
26 Norfolk Road Wangford Beccles Suffolk NR34 8RF
Pips Cottage Norfolk Road Wangford Beccles Suffolk NR34 8RE
Thatch End 4 Hill Road Wangford Beccles Suffolk NR34 8AR
13 Church Street Wangford Beccles Suffolk NR34 8RW
1 Sawyers Cottages Norfolk Road Wangford Beccles Suffolk NR34 8RE
2 Sawyers Cottages Norfolk Road Wangford Beccles Suffolk NR34 8RE
3 Sawyers Cottages Norfolk Road Wangford Beccles Suffolk NR34 8RE
Flat 1 10 High Street Wangford Beccles Suffolk NR34 8RA
Flat 1A 10 High Street Wangford Beccles Suffolk NR34 8RA
Flat 1A 10 High Street Wangford Beccles Suffolk NR34 8RA
Wangford Surgery Church Street Wangford Beccles Suffolk NR34 8RN
The Angel Inn High Street Wangford Beccles Suffolk NR34 8RL
10 High Street Wangford Beccles Suffolk NR34 8RE
Sawyers Cottages Norfolk Road Wangford Beccles Suffolk NR34 8RE
Ford House 2 High Street Wangford Beccles Suffolk NR34 8RR

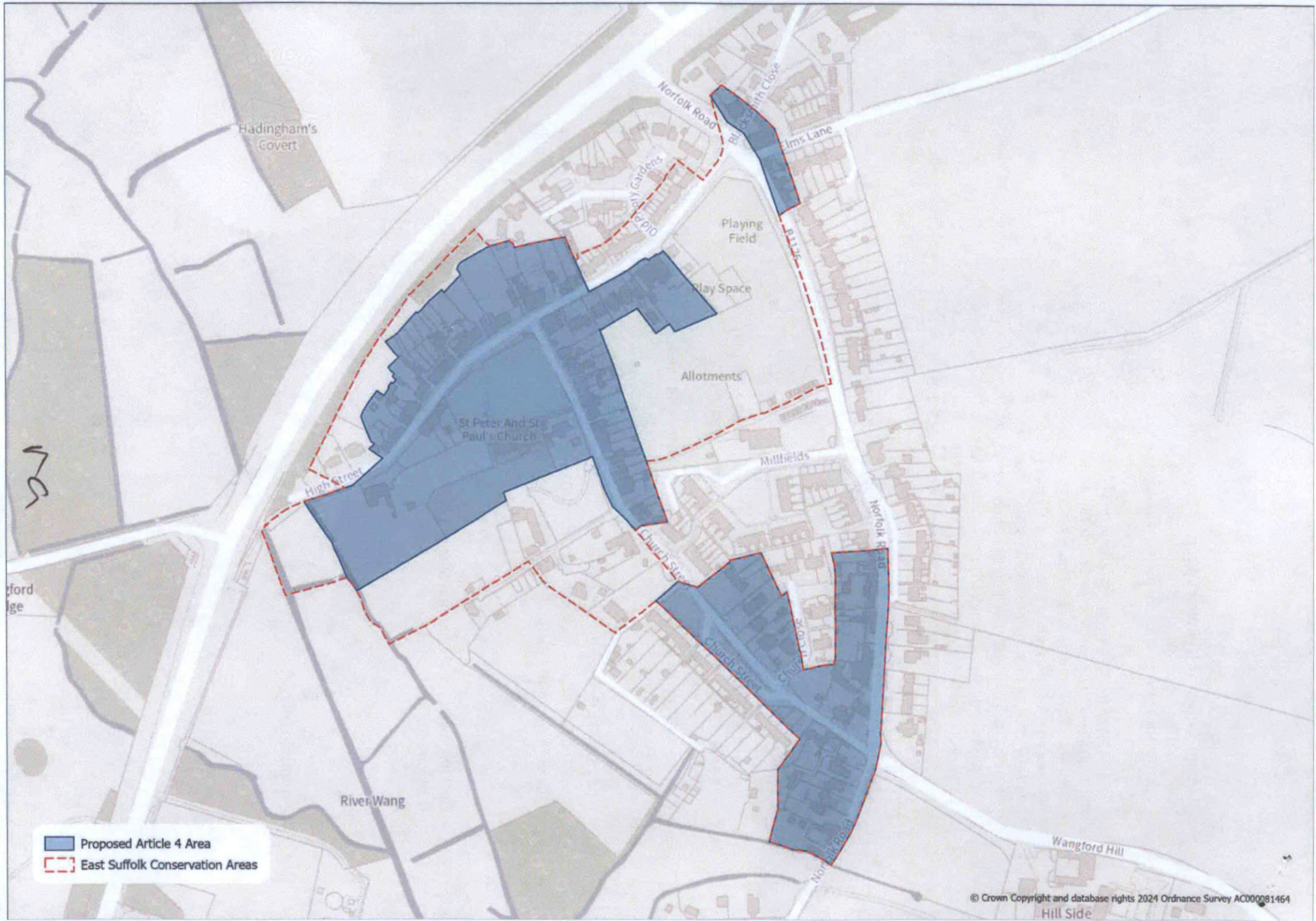
THIS DIRECTION is made under Article 4(1) of the Town and Country Planning (General Permitted Development) (England) Order 2015 (as amended) ("the Order") on 8th July 2024 and confirmed on 7th October 2024 in accordance with paragraphs 1(9) and (10) of Schedule 3 of the Order.

The direction comes into force on **14th October 2024**

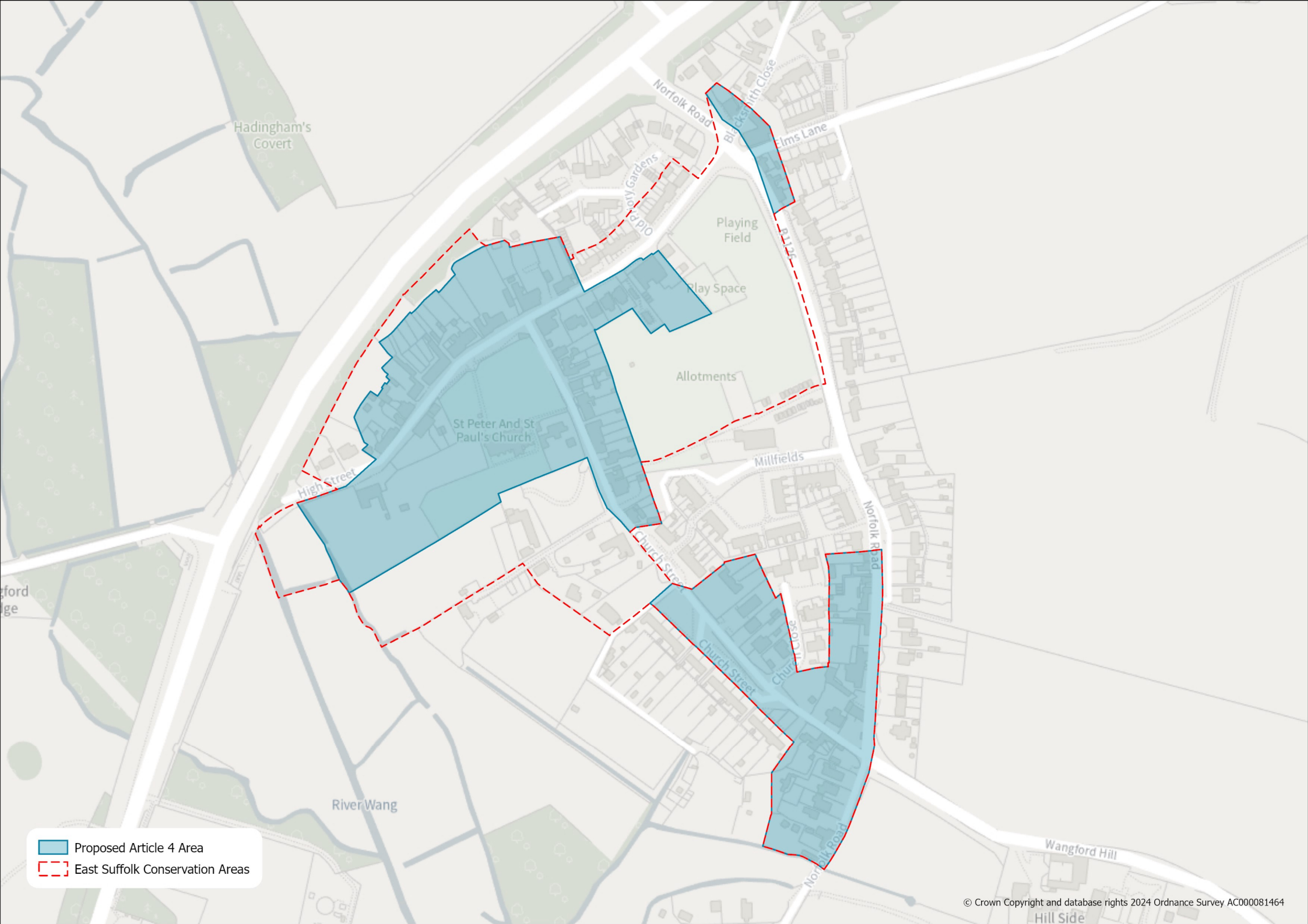
Confirmed under the Common Seal of East Suffolk Council this 8th Day of October 2024
The Common Seal of the Council was affixed to this Direction in the presence of:

MA MARTIN CLARK
.....
Authorised Officer





- Proposed Article 4 Area
- East Suffolk Conservation Areas



- Proposed Article 4 Area
- East Suffolk Conservation Areas