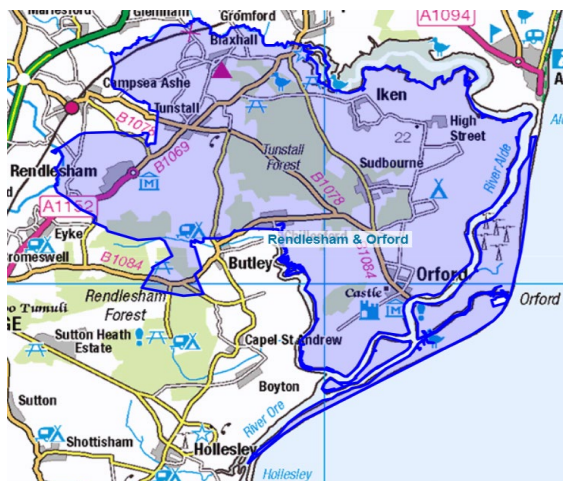


Melton, Woodbridge & Deben Peninsula Community Partnership Information Pack 2026

Rendlesham and Orford



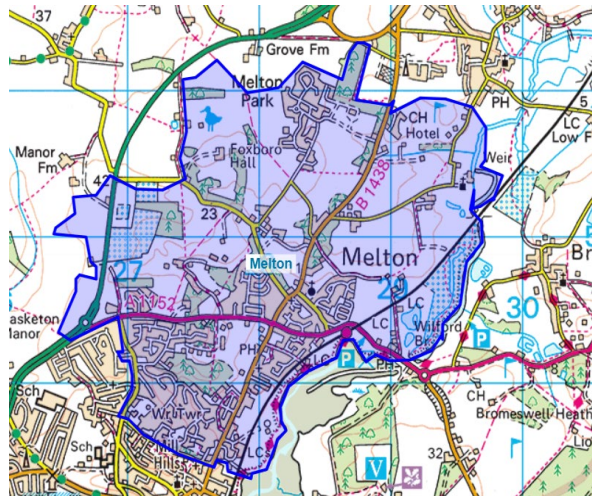
Profile & risks

- Population 4,947. Age groups by count: 0–17 1,039, 18–64 2,828, 65+ 1,085 (~22%). The ward combines a growing settlement (Rendlesham) with coastal rurality (Orford)—seasonality, second homes, and distance to services can amplify isolation, especially in winter months.
- 7.8% of children affected by income deprivation and 8.7% of older people affected by income deprivation. 6.7% of overall population affected by income deprivation and 5.3 population affected by employment deprivation. Has the lowest score of employment age claiming benefit 1.5%.
- Data from the 2021 census shows that 42 households in Rendlesham & Orford responded as having no form of central heating, which is 2% of households. This compares to a value of 1.5% for England.

Health & welfare

- Rural/coastal transport gaps and limited local amenities heighten isolation for older/non-drivers.
- 0.63% score for health deprivation and disability.

Melton



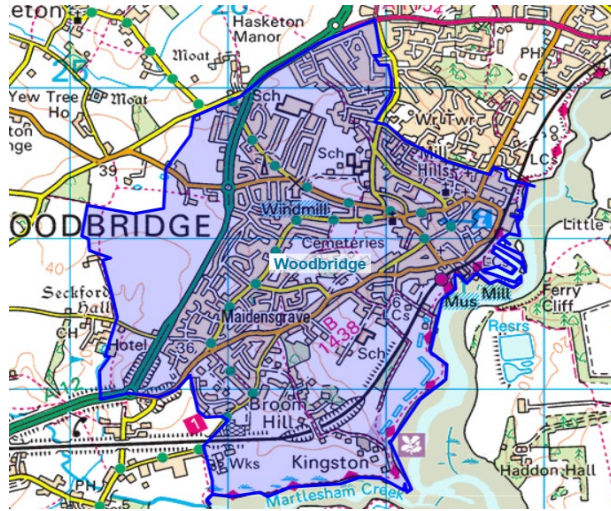
Profile & risks

- Population 4,257 (2021). Age groups by count: 0–17 759, 18–64 2,324, 65+ 1,170. The age structure (c.27.5% aged 65+) suggests above-average isolation risk—especially among single older households and those with limited mobility.
- Melton has a rail station (East Suffolk Line), offering connectivity—but rural pockets and dispersed settlement patterns still create transport barriers for non-drivers.
- 8.1% of children affected by income deprivation and 7.4% of older people affected by income deprivation. 6.4% of overall population affected by income deprivation and 4.9% population affected by employment deprivation. 2.0% employment age claiming benefit.
- Data from the 2021 census shows that 16 households in Melton responded as having no form of central heating, which is 0.8% of households. This compares to a value of 1.5% for England.

Health & welfare

- Expect higher falls/CVD/respiratory burden typical of older areas.
- 2.0% score for health and disability.

Woodbridge



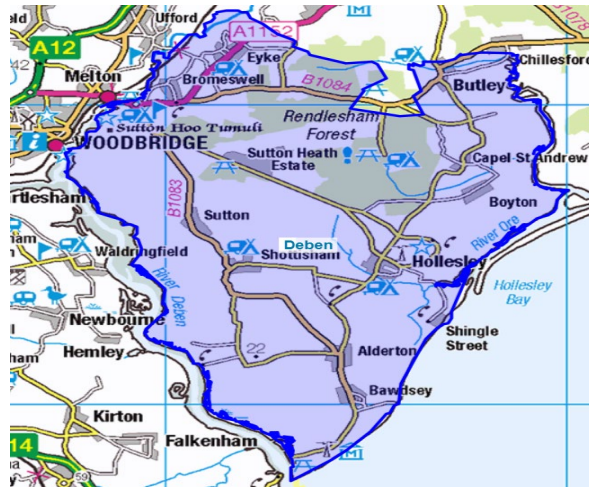
Profile & risks

- Population 7,880. Age groups by count: 0–17 1,285, 18–64 3,906, 65+ 2,687 (~34%). A substantial older cohort indicates risk loneliness/isolation —with many single-person households.
- 10.4% of children affected by income deprivation and 7.7% of older people affected by income deprivation. 8.2% of overall population affected by income deprivation and 8.3% population affected by employment deprivation. 6.3% employment age claiming benefit.
- Data from the 2021 census shows that 54 households in Woodbridge responded as having no form of central heating, which is 1.4% of households. This compares to a value of 1.5% for England.

Health and Welfare

- Chronic conditions flagged as risks include—(falls, frailty, COPD) and cardiovascular conditions. Higher hospital admission for older cohorts.
- 0.51% score for health deprivation and disability.
- Prevalence of dementia at Little St Johns practise is 1.10% and depression is 12.08% highest in CP area. Prevalence of dementia at Framfield practise is 0.77% and depression is 10.52%.

Deben



Total population is 5,750. 0-17 yrs 23.4%, 18-64 60.7% and 65+ 34%

Profile & Risks

- A predominately rural/coastal ward, dispersed settlement. Travel barriers for older adults and non drivers. High risk of isolation.
- A moderate liveability index suggests average access to amenities but deficits in transport, social engagement and older adult service.
- 5.9% of children affected by income deprivation and 6.7% of older people affected by income deprivation. 5.0% of overall population affected by income deprivation and 8.3% population affected by employment deprivation. 4.5% employment age claiming benefit
- Data from the 2021 census shows that 37 households in Deben responded as having no form of central heating, which is 1.8% of households. This compares to a value of 1.5% for England.

Health & Wellbeing

- High risks of frailty, falls, CVD and respiratory conditions.
- 0.67% score for health and disability.
- Prevalence of depression Peninsula practice is 8.42% and prevalence of dementia is the highest in CP area at 1.47%.

Stats from Woodbridge Citizens Advice

Key Statistics



01/10/2025 30/12/2025



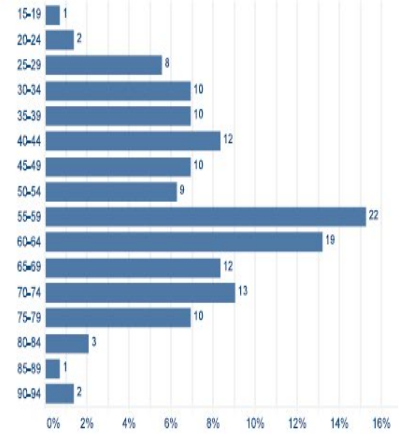
Summary

Clients	151
Quick client contacts	
Issues	468
Activities	944
Cases	122
Outcomes	
Income gain	£4,221
Debts written off	£1,664
Other	£143

Issues

Issues	Clients
Benefits & tax credits	58
Benefits Universal Credit	21
Charitable Support & Food Ban...	11
Consumer goods & services	6
Debt	23
Education	2
Employment	6
Financial services & capability	11
GVA & Hate Crime	3
Health & community care	6
Housing	25
Immigration & asylum	6
Legal	9
Other	2
Relationships & family	25
Tax	3
Travel & transport	2
Utilities & communications	8
Grand Total	468

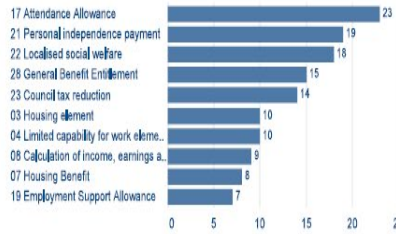
Age



Channel



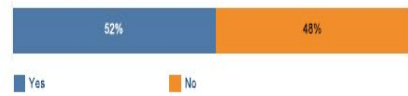
Top benefit issues



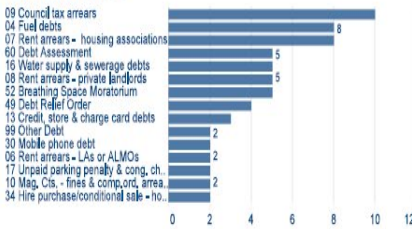
Gender



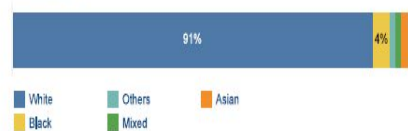
Disability / Long-term health



Top debt issues



Ethnicity



Summary

- **Older populations but with variation by ward.** Woodbridge and Melton have notably older age structures (by count, 65+ accounts for ~2,687 of 7,880 residents in Woodbridge; ~1,170 of 4,257 in Melton), whereas Deben and Rendlesham & Orford are relatively younger (65+ ~1,346/5,750 in Deben; ~1,085/4,947 in Rendlesham & Orford). Older age is a strong proxy for isolation risk, unpaid care needs and long-term conditions.
- **Social isolation hot-spots have been flagged locally.** East Suffolk's own work points to elevated isolation risks on the outskirts of towns including Woodbridge, and in rural/coastal areas—drivers include age, widowhood/single status, low income, depression and transport barriers.
- **Access & connectors matter.** Melton's rail station and Woodbridge's services help reduce isolation risk, but scattered rural settlements in Deben and Rendlesham/Orford face travel, digital and seasonal service constraints.
- **Welfare pressures: fuel poverty & cost of living.** Top three benefit issues at CAS were attendance allowance, PIP and social welfare. The top debt issues were council tax arrears, fuel debts and rent arrears. Age 55-59yrs were the group that accessed CAS the most.
- **Health & Care: Integrated Neighbourhood Teams (INTs).** Key health themes include: Long-term conditions: respiratory disease, CVD prevalence. Obesity and smoking issues. Hospital admission patterns. Demographic profile: ageing population, low deprivation relative to county averages